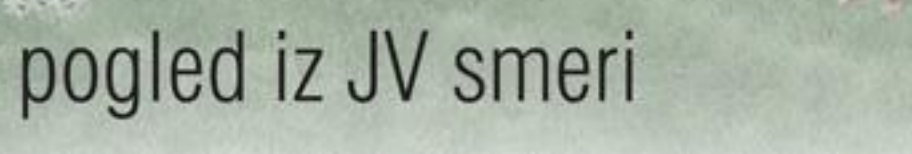
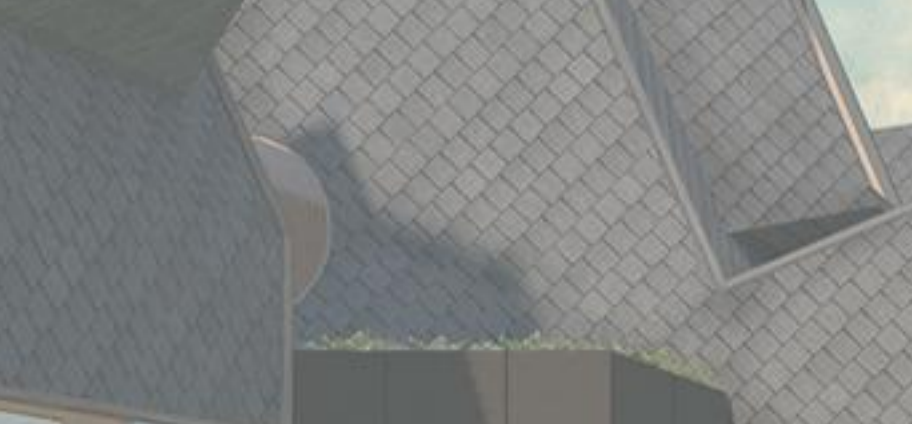
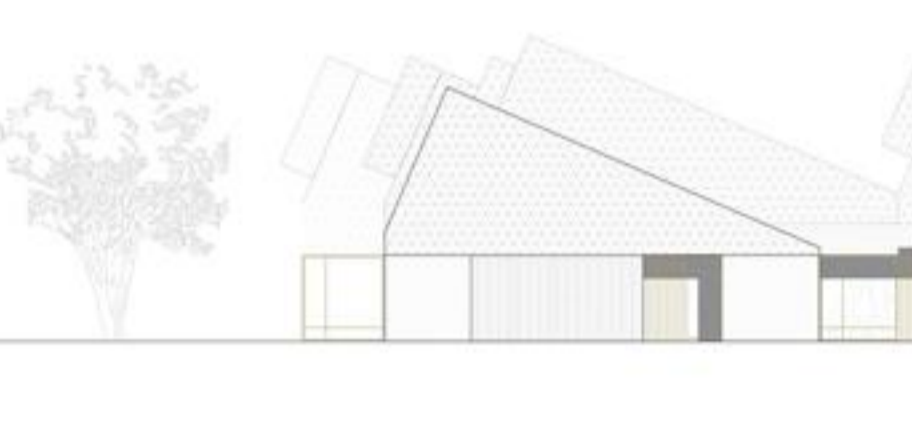
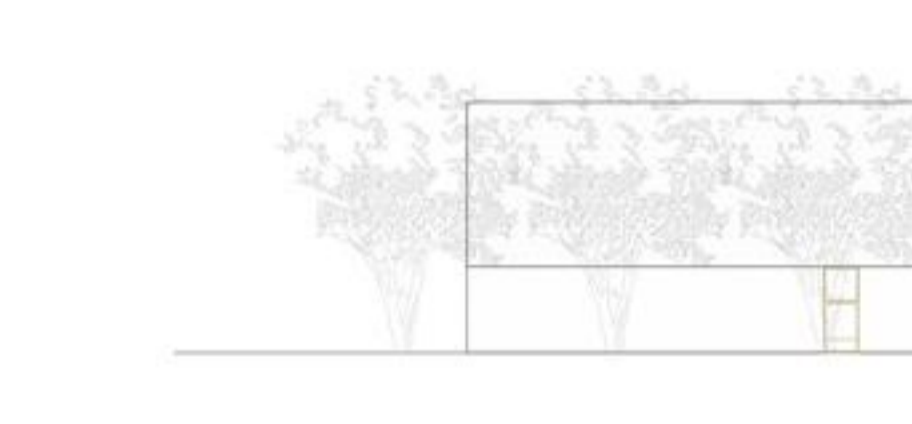
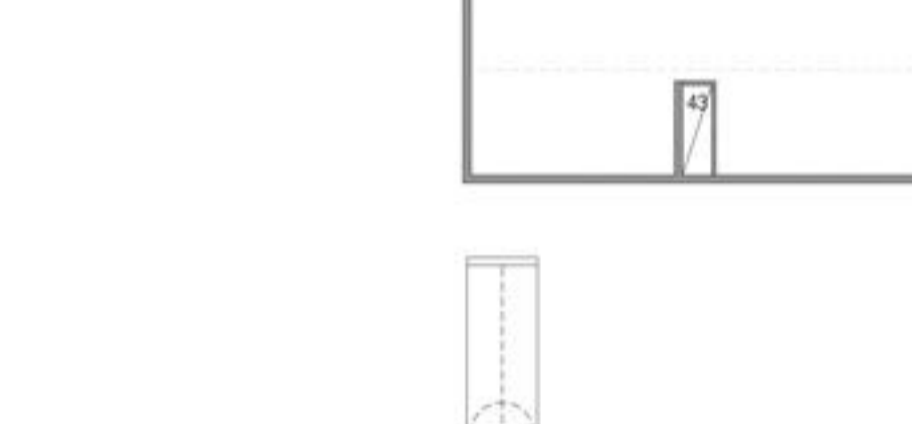
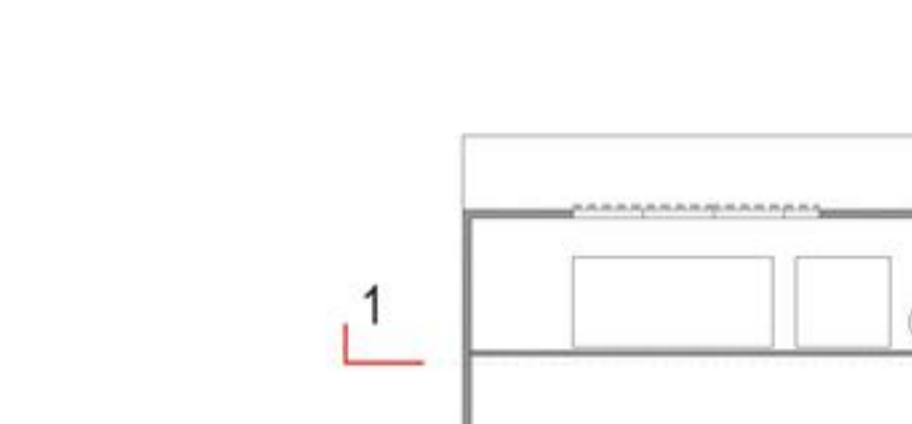
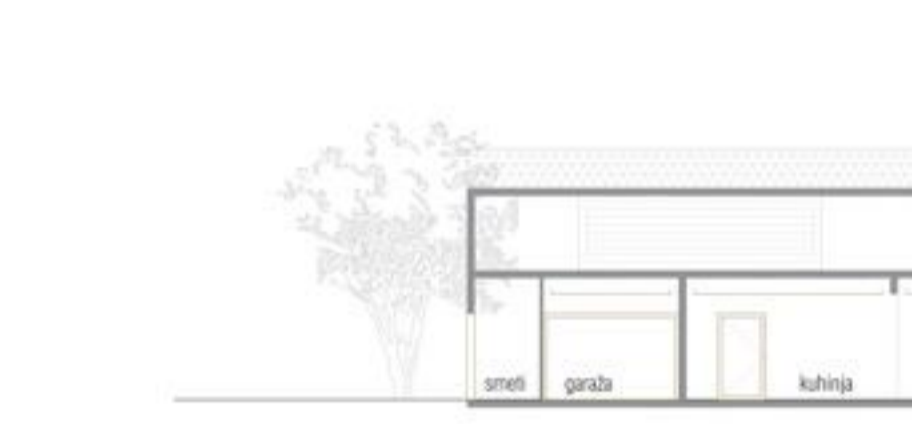
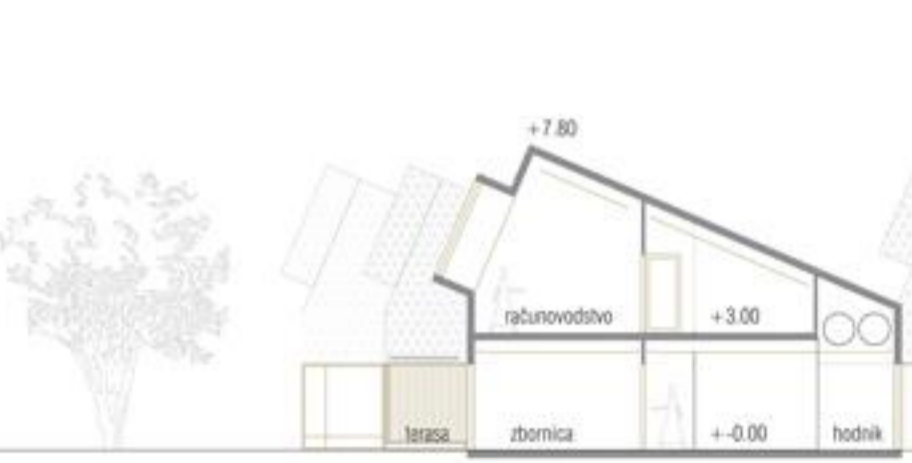
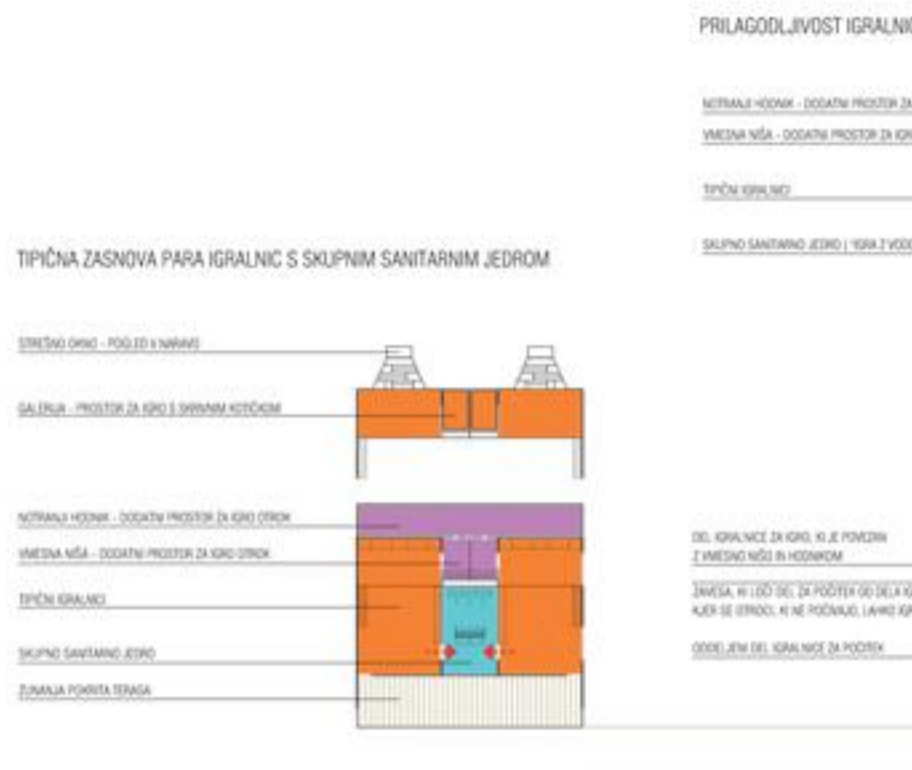
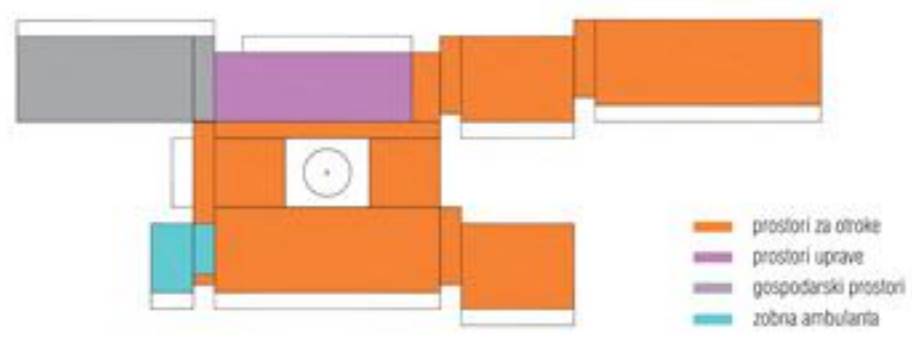
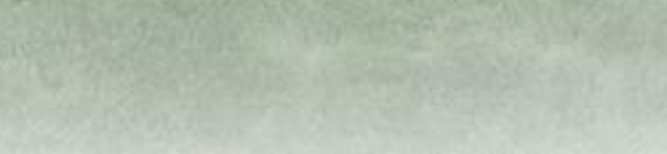
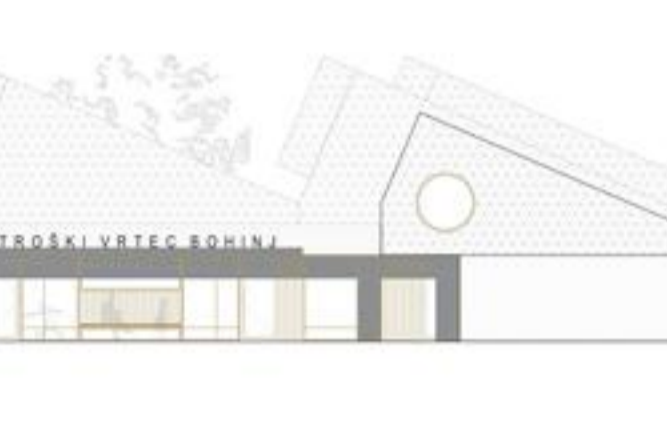
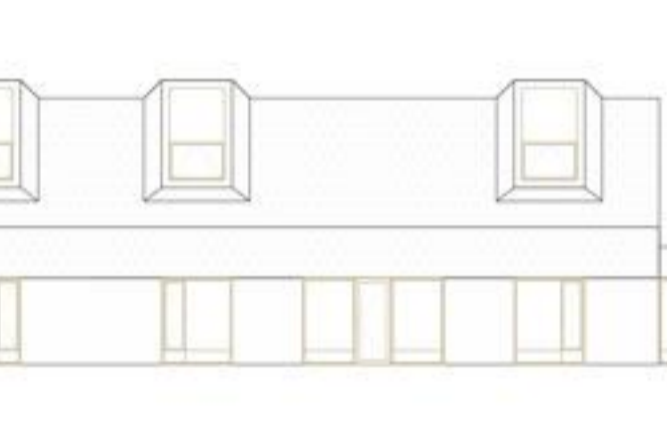
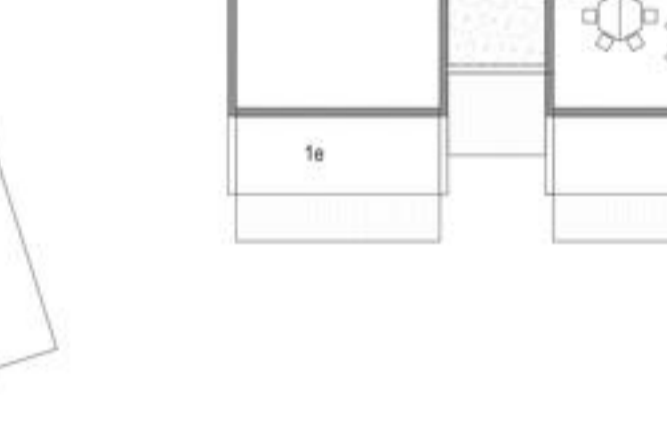
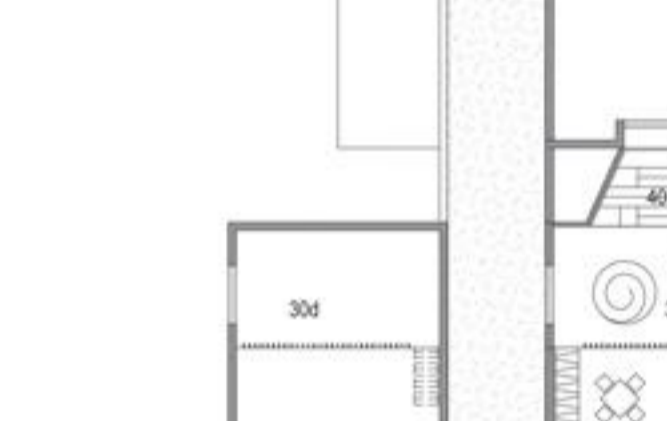
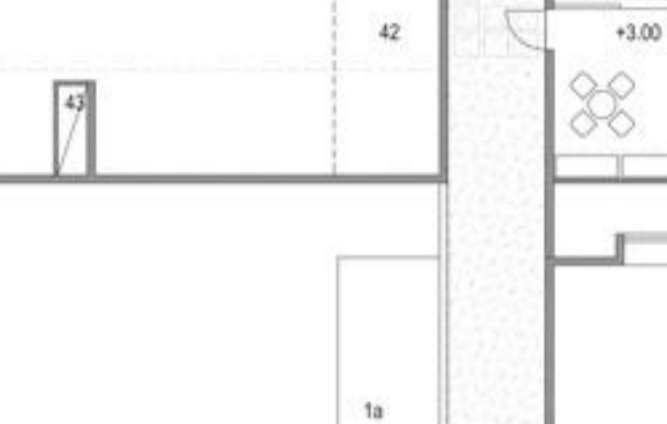
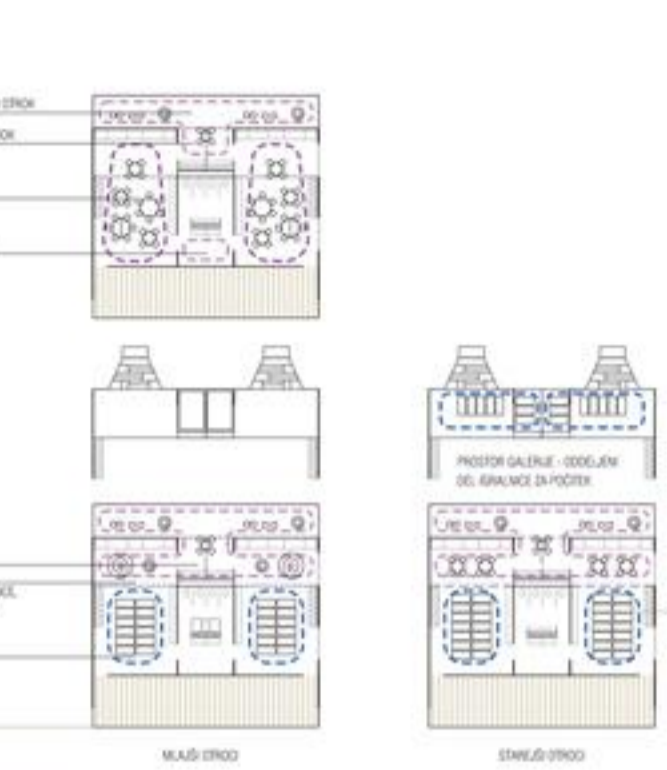
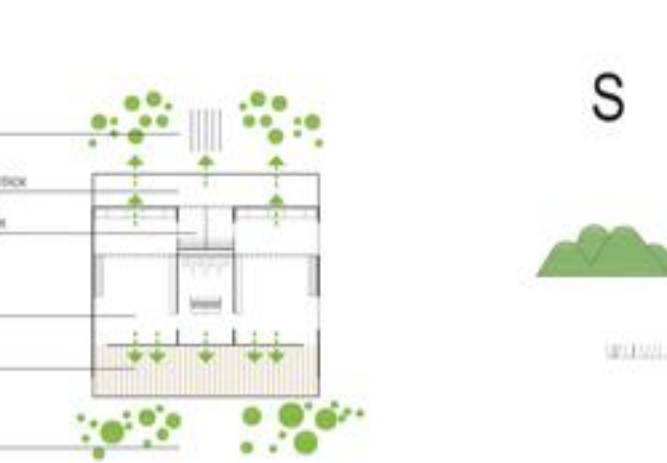
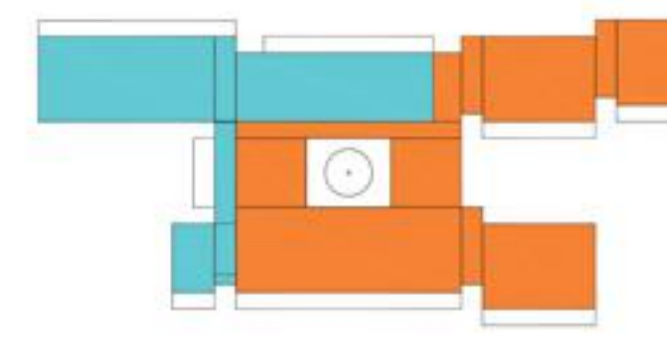


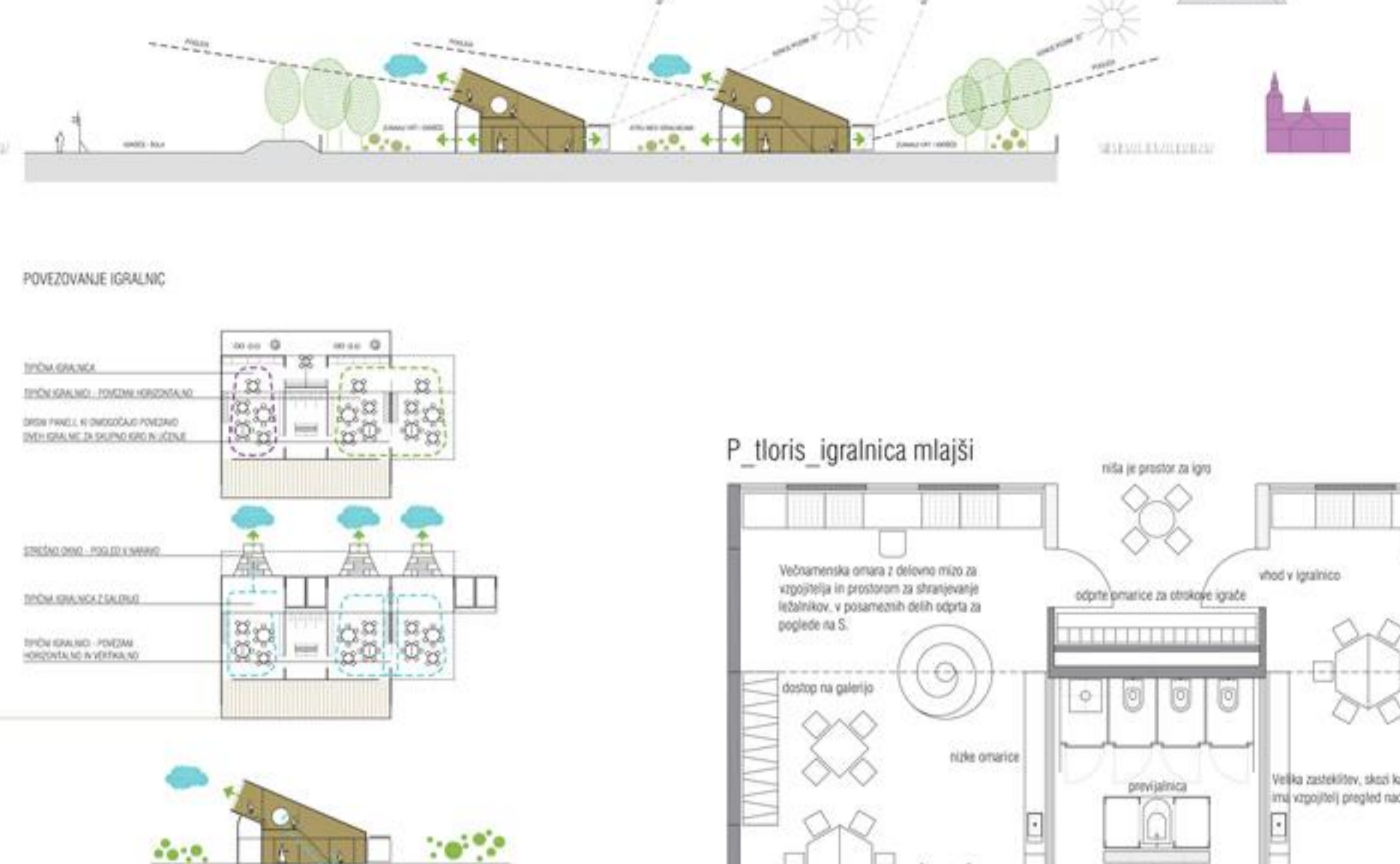
PROGRAMSKA ORGANIZACIJA VRTCA



IGRALNE POVRŠINE : OSTALE POVRŠINE



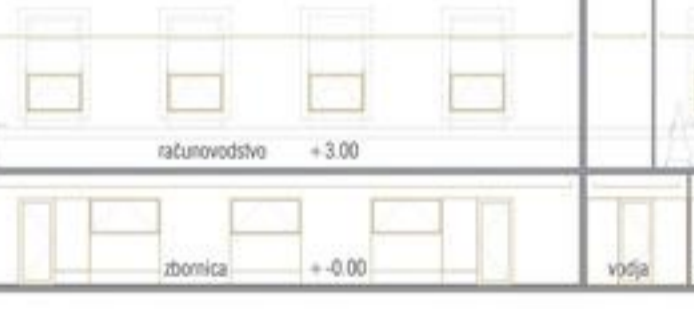
KONCEPT ARHITEKTURNE ZASNOVE VRTCA



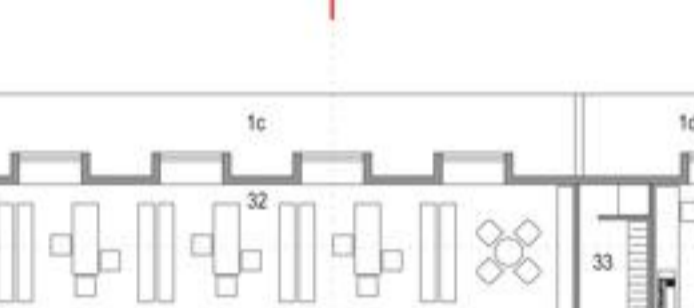
POVEZOVANJE IGRALNIC



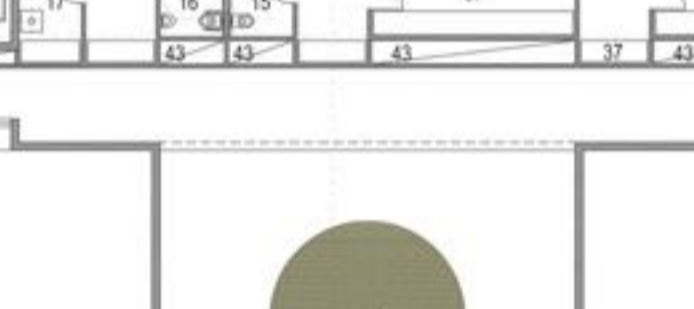
POVEZOVANJE IGRALNIC



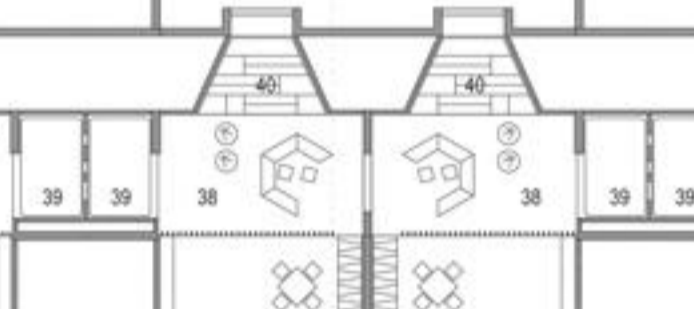
POVEZOVANJE IGRALNIC



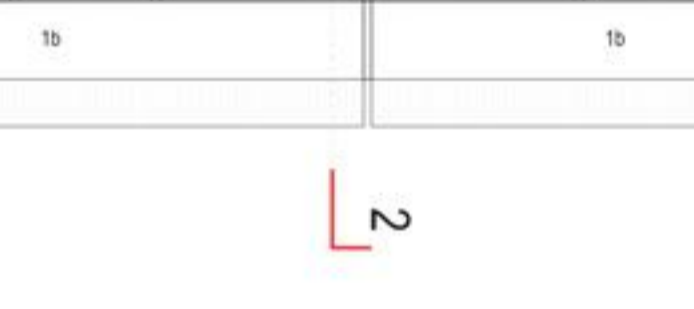
POVEZOVANJE IGRALNIC



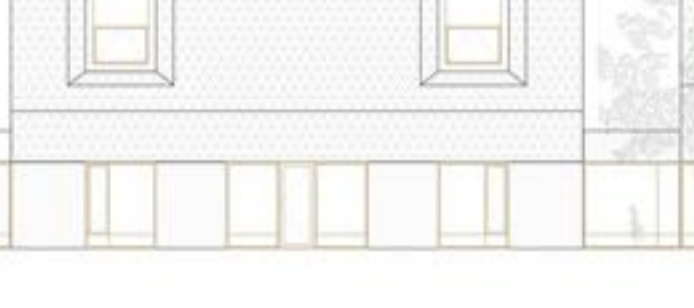
POVEZOVANJE IGRALNIC



POVEZOVANJE IGRALNIC



POVEZOVANJE IGRALNIC



POVEZOVANJE IGRALNIC



POVEZOVANJE IGRALNIC



POVEZOVANJE IGRALNIC



POVEZOVANJE IGRALNIC



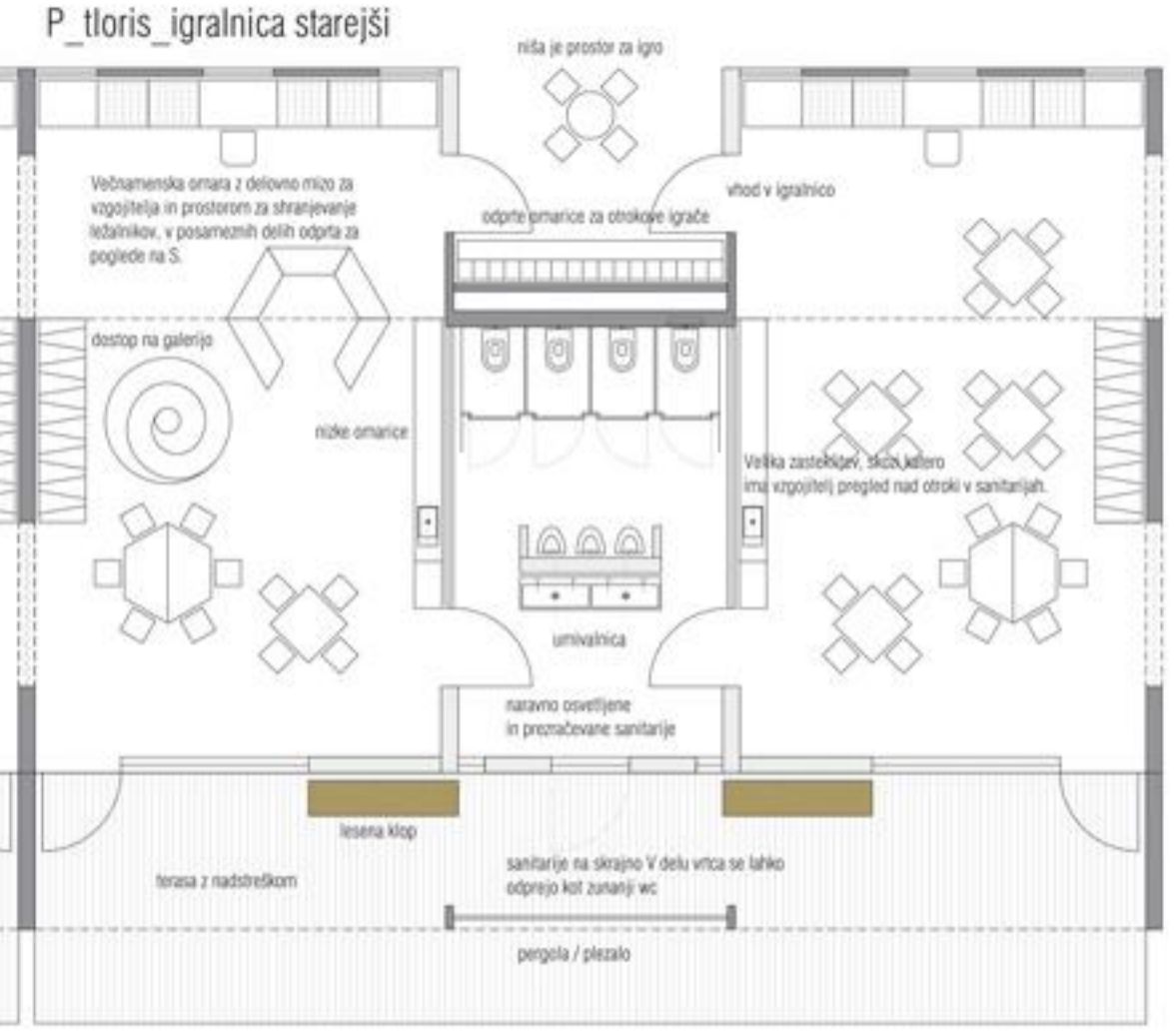
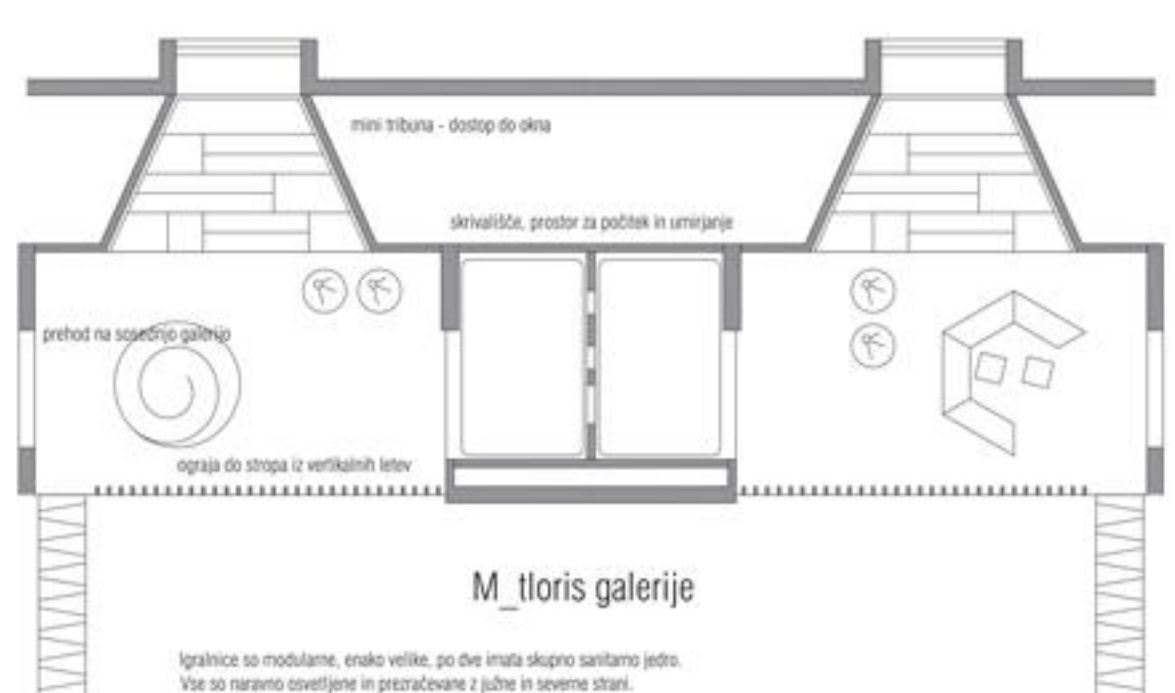
POVEZOVANJE IGRALNIC



POVEZOVANJE IGRALNIC



igralnice 1 : 100



prerez 2-2



prerez 1-1



tloris mansarde 1 : 200



- LEGENDA PROSTOROV
- 1 natprosni
 - 32 računovodstva
 - 33 galerije
 - 34 kuhinja/šolska
 - 35 hišnik
 - 36 senar
 - 37 arhe
 - 38 galerija v igralnici
 - 39 obdobjena hiša za umetnik
 - 40 obdobjena hiša z mini klubom
 - 41 stramba/luča
 - 42 kottlovnica
- IGRALNE DVORISČE
- 44 stramba za zunanjo igro
 - 45 nadstropna za terasa
 - 46 nadstropna na glavnem vhodu
 - 47 takovane igralne površine
 - 48 terasne igralne površine

S fasada



J fasada



Z fasada



V fasada



pogled iz JV smeri



osrednji prostor vrtca