

/2019

2. faza arhitektura: **UL FFA**

code: 33693

>> Content

01	Introduction	06	Area schedules
02	Masterplan	07	Visualisation
	Design Approach	08	Contract overall fee
	Masterplan diagrams	09	Investment evaluation
03	Architecture	10	Presentation Boards
	Concept diagrams		
	Key data		
	Internal Arrangement		
	Typical lab floor		
	Facade design		
	MEP strategy		
	Structural design		
	Sustainability		
04	Design Drawings		
	M 1:1000 Site Plan		
	M 1:500 Basement		
	M 1:500 Ground floor		
	M 1:500 Level 01		
	M 1:500 Level 02		
	M 1:500 Level 03		
	M 1:500 Level 04		
	M 1:500 Roof Level		
	M 1:500 Sections		
	M 1:500 Elevations North - South		
	M 1:500 Elevations East - West		
05	Colour coded axonometric plans		

01. Intro

We have carried out an analysis of the context in planning and physical terms, together with an evaluation of the site and brief. The proposal is established by setting design principles that respond to the immediate site context and developing these through massing and functionality studies into an emerging design concept.

Brief

The site is located in Ljubljana Brdo and is approximately 13,800sqm in size. The brief calls for an educational building providing circa 8,000sqm of Laboratory space, Library space, Auditoriums, ancillary 'break-out' space, and Underground car parking. The anticipated construction budget (GOI) is circa 48,250,000 Euros.

Scheme summary

The proposal can be described as a 5 story (G+4) educational building measuring 29,772 m2 gross external area including the basement.

The site measures 13,787 m2 of which 5,872 m2 will be covered by above-ground facilities and circa 7,500 m2 below ground.

Proposed car parking provision is for 210 cars considering 50 spaces can be accommodated in the future car deck in the Campus' vicinity. There are 10 visitor car parking spaces provided along the road.

There is in total of 270 cycle parking spaces on-site and one dedicated delivery bay.

Vision

Our aim for a new Faculty of Pharmacy building is to provide a space that is attractive, green, highly flexible/adaptable, future proof and fosters collaboration and innovation.

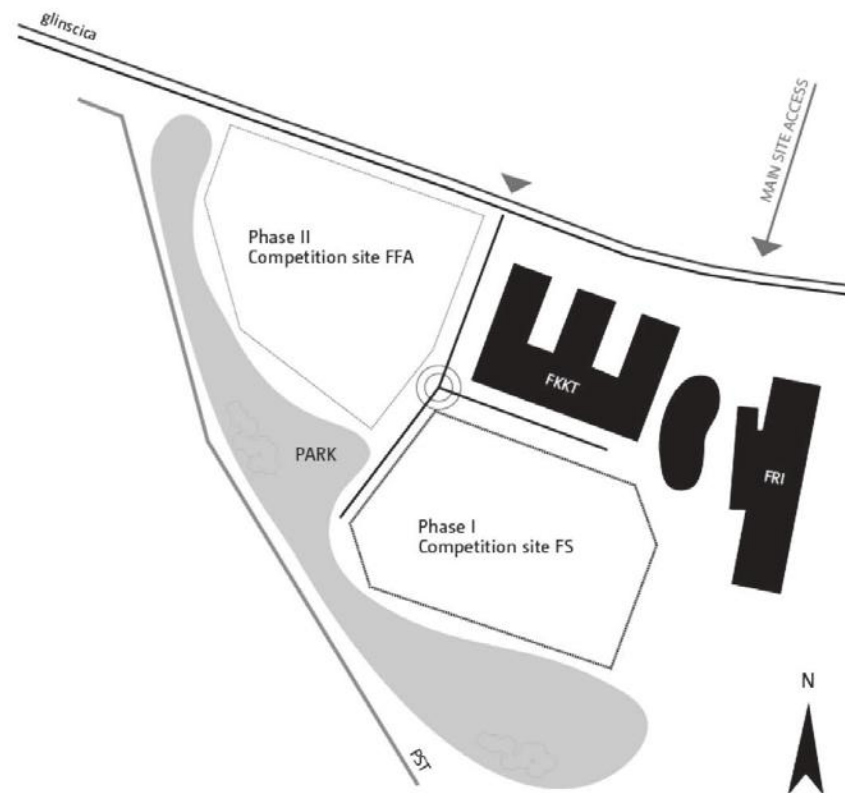
A place that will become a hub for students, researchers as well as for corporate partners and entrepreneurs in the Science sector.

02. Masterplan

Design approach

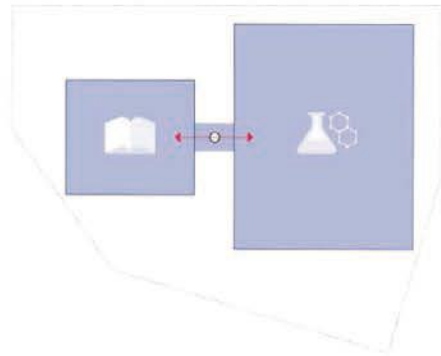
Key points

- Creating a new central place of the Future Science Campus
- Respecting the surrounding building heights and masses
- High-quality design and detailing to conserve and enhance the visual appearance of the Science Campus
- Respecting the surrounding greenery, with views to the north, south, and west
- Apply consistent external works and landscaping philosophy that will improve the public realm and campus for its occupants and visitors
- The proposal considers anticipated access points
- Inclusion of heavy laboratory space
- A flexible building that will allow for future adaptability of laboratory space
- Support a sense of community
- Maximising open green spaces



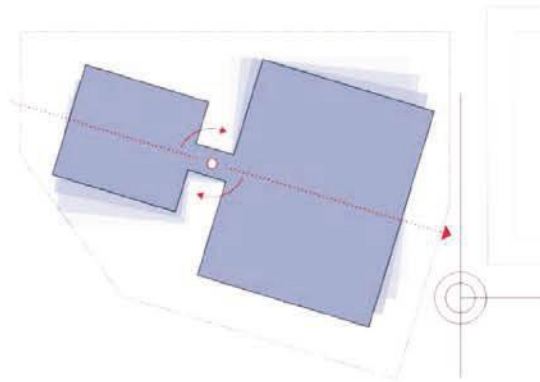
03 Architecture

>> Masterplan Diagrams



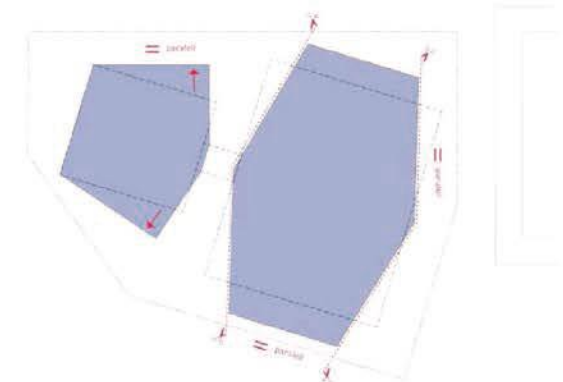
TWO VOLUMES

We have divided the program of Faculty of Pharmacy into two main parts; each part has its own building that is connected via bridges on every level. The laboratories are housed in the bigger volume while teaching and common spaces in the smaller volume.



ROTATION

The new master plan signals a new focal point located between the Faculties of Chemistry, Pharmacy, and Mechanical Engineering. The building volume is tilted toward the focal point to create a central entry space to the new University Campus.

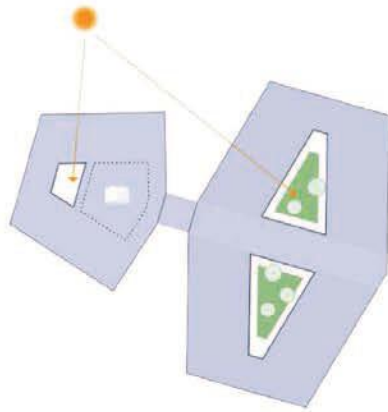


SITE ADAPTATION

The building blocks are refined by trimming the edges to align with the site boundary and the surrounding building. With mirroring, a hexagon-shaped building is created that amplifies dynamics of external and internal spaces.

03 Architecture

>> Concept Diagrams



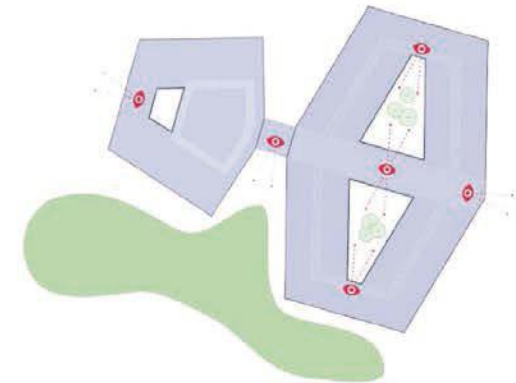
'ATRIUMS'

Two large atriums are introduced to provide ample daylight to the teaching and laboratory spaces. Following the biophilic design principles, the four-story atriums are filled with lush plant life increasing the student/teacher connectivity with natural environments, promoting health and wellbeing.



MAIN ENTRANCE

The arrival space between the two volumes forms an impressive entrance area to the north and to the south creating a strong visual connection with the park. The building is designed to have two frontages - the 'road' frontage and the 'park' frontage. Side entrance/exit points are located at the end of the main 'axis' of the building running east-west.

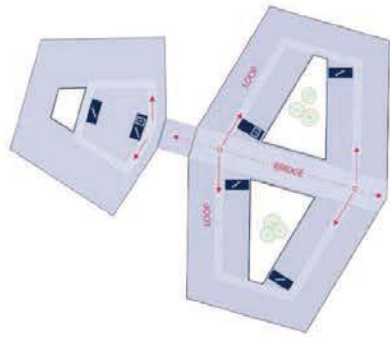


VIEWS OUT

The building is designed to promote 'green' and features a diversity of green spaces namely the natural green surroundings, the park with a water feature to the south and lush green atriums. By exposing views to greenery from every room the quality of learning environments for student and teachers will be enhanced.

03 Architecture

>> Concept Diagrams



VERTICAL COMMUNICATION

The lab building is serviced by a central core and two satellite stair cores on each side. The core contains three lifts, fire escape stair and washroom area with 'superloos' - space-saving all-in-one unisex units that can be split among students and teachers while still maintaining the privacy.

The non-laboratory building is serviced by a compact central core with two lifts and two stairs. An additional fire escape stair is provided on the other side of the building.

CIRCULATION

One of the key drivers of our design is to promote the interaction between students, researchers and teaching staff. The main horizontal communication link is running east-west connecting laboratories and non-laboratory teaching spaces through a series of break out spaces fostering collaboration and discussion.



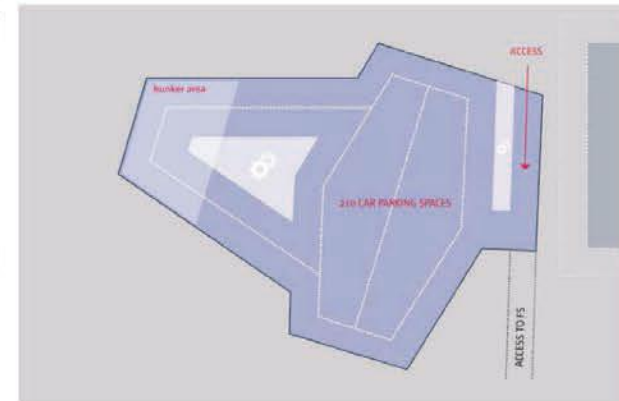
VEHICULAR ACCESS / SERVICE ROUTES

The vehicle site access is from the north through Vecna pot where a turning bay is provided at the end of this road. A Two-way service road runs along the eastern site edge. Visitor car parking area is provided to the northern part of the plot in vicinity to the drop-off area.

A footpath is provided around the building perimeter to give full access for cleaning.

REFUSE

It is anticipated that several service vehicles will access the site via the service road on the eastern side. The refuse store is located next to the ramp and close to the east side entrance of the lab building.



BASEMENT ARRANGEMENT

Underground level measures 7642 m² in total and will provide 210 car parking spaces. The carpark number considers 50 spaces that can be accommodated in the future car deck in the Campus vicinity. The basement will also accommodate heavy plant equipment such as compressors, watertanks, central heat generators, etc

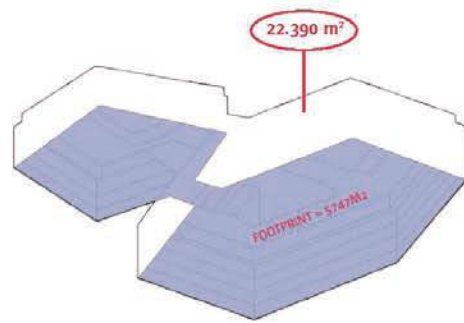
As per the brief, the ramp to the underground car park is as located on the eastern side of the building next to the Faculty for Chemistry and is accessed from the north via the Vecna pot.

BUNKER

The west side of the basement is a dual purpose. Over 1,000 m² is allocated to the bunker area. Structure design, washroom facilities, additional means of escape are subject to later stages of the design.

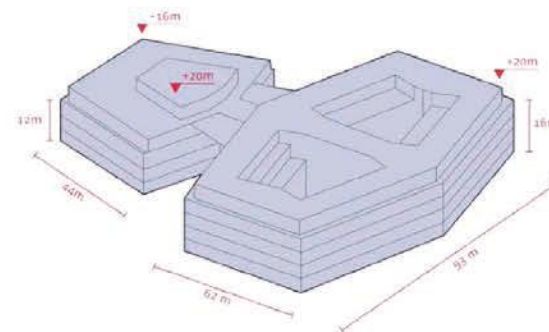
03 Architecture

>> Key data



BUILDING AREA AND FOOTPRINT

The proposed main building will deliver 22,190m² of gross area (29,772 m² including the basement) over 5 levels with a footprint of 5,872 m².



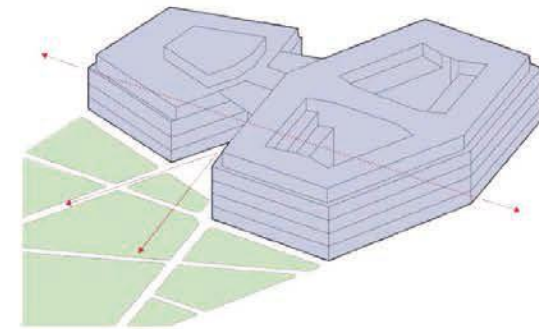
BUILDING DIMENSIONS

Number of above ground facilities: 2
Number of floors: Basement + Ground + 3 Level + set back Floor (Terrace Level)
Relative height: +20 m

Building dimensions (both buildings): 115 m x 90 m
West building dimension: 44 m x 55 m
East building dimensions: 63 m x 92 m

The floor to floor height is set at 4 meters for all the floors apart from the ground floor level of the Laboratory building where Laboratories require walk on ceilings.

A cantilevered canopy with metal louvers visually connects the two buildings covering the entrance area on both sides and providing a sheltered external area for its occupants.



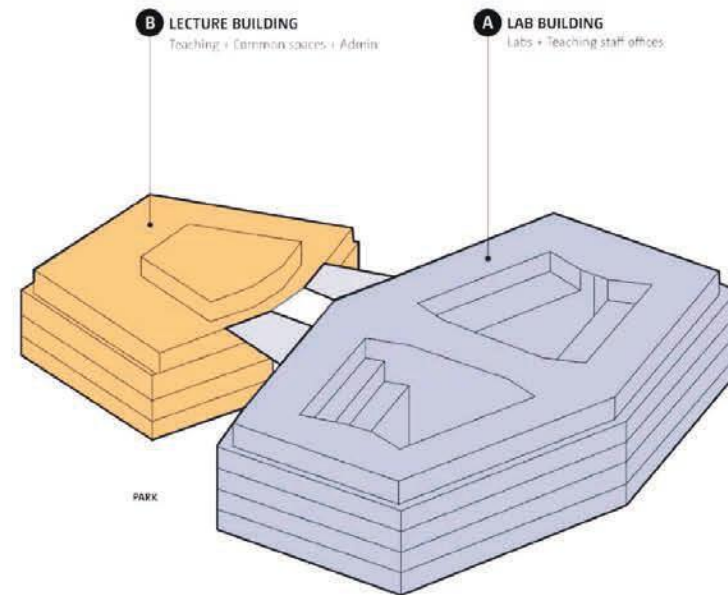
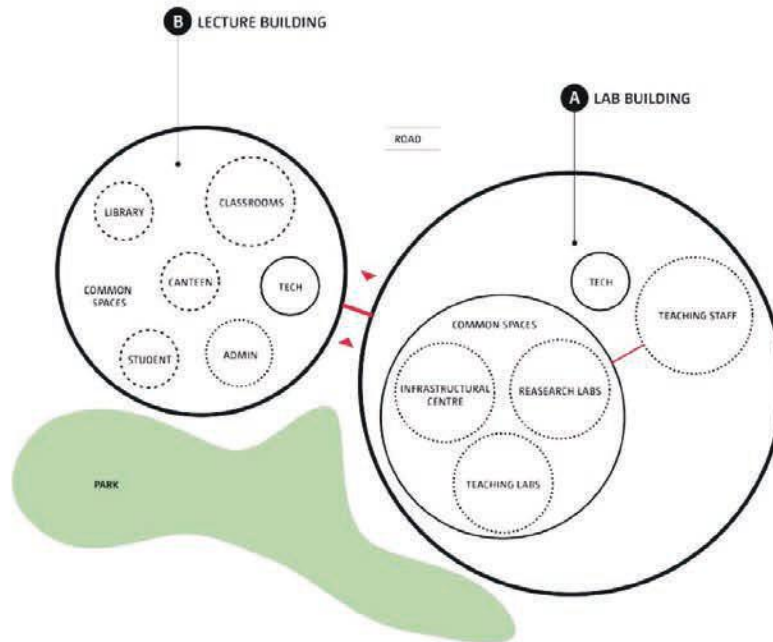
LANDSCAPE

Surrounded by natural heritage on three sides, the building is designed to maximise open green spaces. Two volumes are lightly linked by the glazed bridge lets the greenery pass through the site north-south.

Open green areas to the south shall be designed as a merger of the Campus common and the public park providing an attractive outdoor amenity for students, visitors, and the local community.

03 Architecture

>> Internal Arrangement



Building A

With a focus on adaptability and cross-collaboration, all lab facilities are accommodated inside a single volume allowing for various mixtures of Science clusters which also enables different departments to either expand or contract in the future. One department includes a set of research and pedagogical labs. The building is designed in the way that research labs can be located on the northern side or on the inner perimeter overlooking the green atriums. The ground floor level has an increased floor to ceiling height and is sunken for 1 m to accommodate 5 m labs with walk-on ceilings.

Teaching staff offices are located on the top two levels connected with the labs on lower floors via lift/stair cores.

The majority of the plant is placed on the rooftop areas and the basement. Offices and depots are on the ground floor apart from IT and building manager which are located on the upper levels in the vicinity to the vertical cores.

Building B

Building B acts as an independent volume accommodating all teaching and common spaces, linked to the main laboratory building via the bridge.

Two large lecture theatres, each a double-height volume, are set one on top of the other in the centre of the building. The circulation is placed around the large volume on every level creating a comfortable connection to the surrounding spaces. All lecture rooms are arranged on level 3 around the external perimeter.

The administration is independent and organised on the first level. Student service office and the room for dissertations serves as a separate administrative unit connected with the student communal facilities on the ground floor level. The student canteen and central social space have direct access to outdoor 'break out' space on the western side.

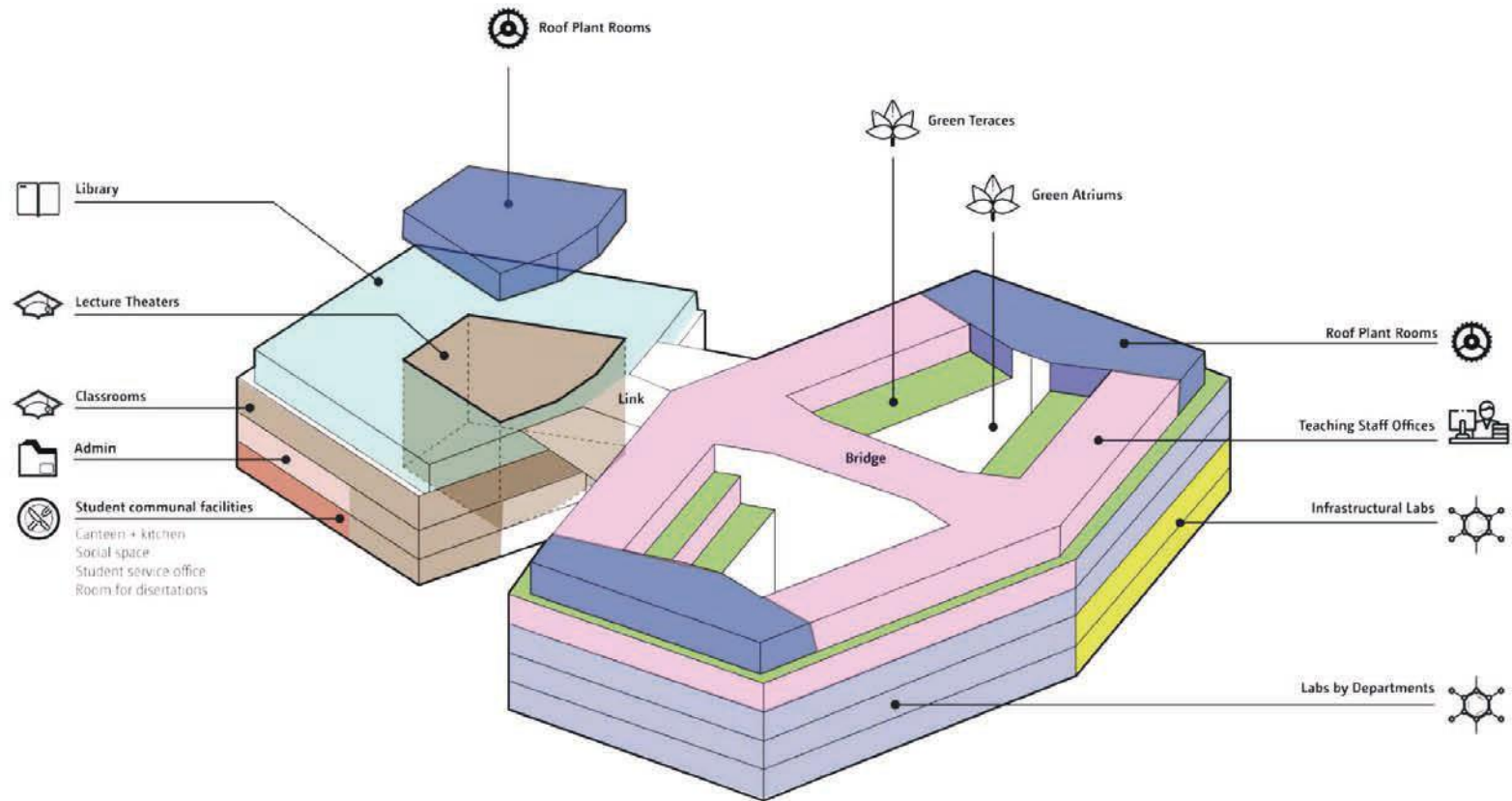
The library is placed on the top set back floor enjoying green terraces with views to all directions.

Building security and operation

In relation to building security, sophisticated and effective electronic systems will deliver the required level of security on the premises. Having a separate access control system for each building means they can be operated individually. While the lab building will require more strict secure access, the lecture building can be open later in the evening to allow students the use of the library, quiet learning spaces, and spaces for collaboration. This solution can also accommodate sublets to other organizations, or various events/conferences during weekends and summer breaks.

03 Architecture

>> Internal Arrangement



03 Architecture

>> Typical Lab Floor

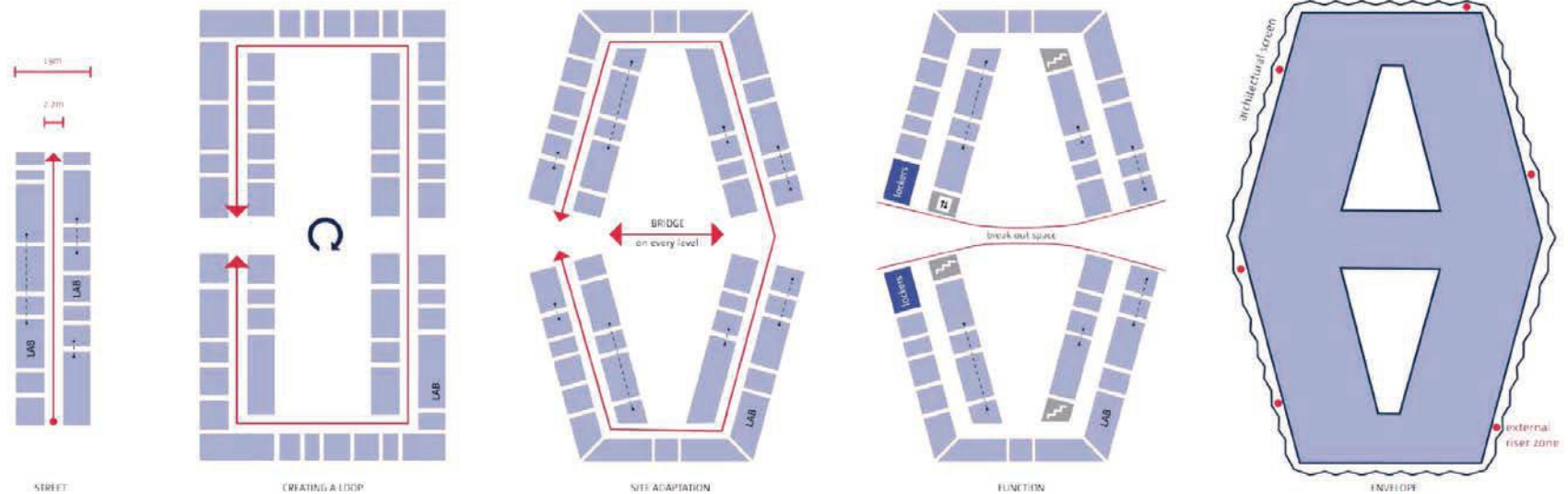
Internally, each building wing is 19m wide providing high-quality laboratory accommodation. The structural solution is based on 8.1m x 8.1m grid. All structural walls, providing lateral stability, are in the façade zone allowing for highly adaptable laboratory spaces with easy access for servicing.

The building layout comprises an internal loop with corridors to avoid dead-end conditions or sleeping corridors. A 2.2 m wide corridor runs around the building centre providing access to laboratories on both sides.

Floors are connected via lift cores and stair cores evenly spread out to provide safe evacuation for its occupants. A wide bridge separates the building in the middle of every level offering a series of 'break-out' spaces. It creates a vertical social hub increasing the opportunity for social interaction, collaboration, and relaxation with views to the lush green atriums on both sides.

There are five locker areas in the building - one for each academic year. These are located next to the washrooms and the main lift core on all lab floors.

For future adaptability, or altered internal layouts for laboratory spaces, the layered facade system allows for any additional future extract ductwork to be located externally behind the architectural screen.



03 Architecture

>> Facade design

The design of the external envelope is of paramount importance in order to make sure that the proposal will have a positive impact on its surrounding, provide thermal comfort and have sufficient daylight.

At this stage we anticipate the laboratory building façade as a standard blockwork with insulated render finish, screened with architectural louvre system. The aluminum window system would be inserted above the parapet level of 900mm. The brise soleil system is held away from the façade line allowing for a 500mm space in between for any external extract ductwork which would be serviced through the catwalk on every level. Moving these extracts outside of the building enables greater flexibility for the operator to reconfigure internal laboratory spaces in the future. Penetrations at ceiling level can also be made at any location without affecting the aesthetic appearance of the building.

The proposed custom made timber brise soleil system consists of vertical timber slats, each spanning over one level. The system overlays the building's volume and acts as a curtain unifying the architectural form of the building whilst protecting the building of unwanted solar gains as well as covering any future extract ductwork.

The lecture building façade build-up is also standard blockwork with insulated render finish. To contrast the timber clad lab building, the facade is screened with architectural louvre system that consists of vertical white translucent glass or polycarbonate elements attached to the steel substructure.

1. Laboratory building facade

- Blockwork walls with insulated render system
- Aluminium window system, parapet 900mm
- Glazed timber doors, motorised where required
- An integrated, electromechanically operated, revolving door system
- Architectural screen: Vertical timber elements attached to the steel structure; 500mm catwalk behind the louvre system for cleaning and maintenance

2. Curtain walling

3. Atrium facade

- Blockwork walls with insulated render system
- Aluminium window system, parapet 900mm
- Curtain walling to central spaces (bridge)

4. Green terraces

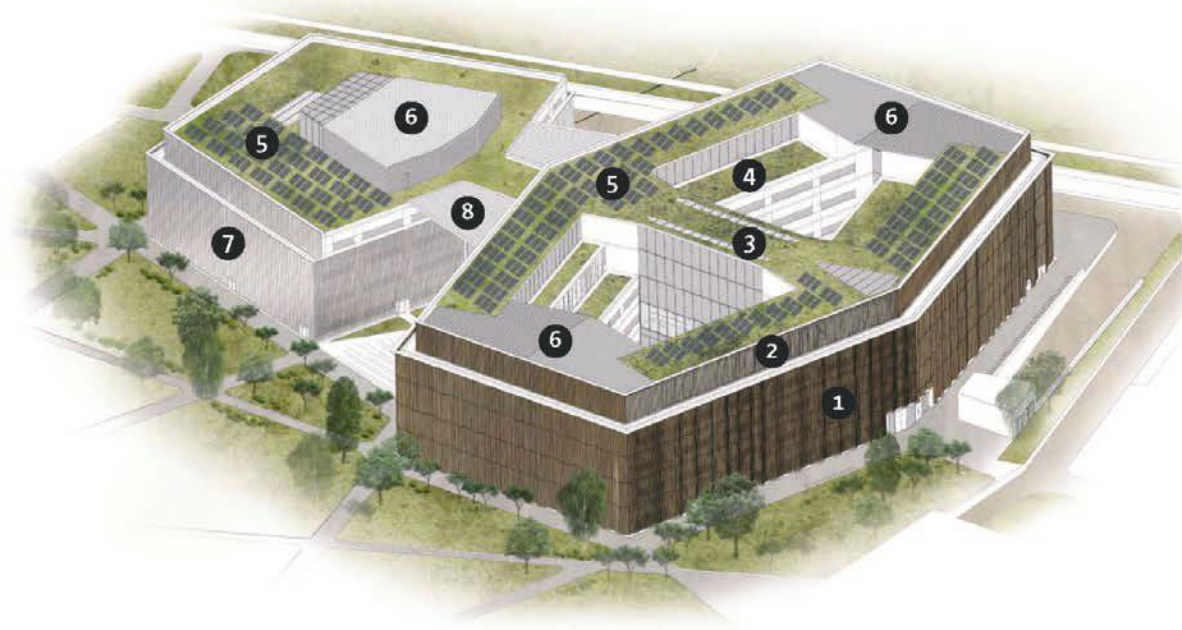
5. Green roof

6. Open plant room spaces

7. Lecture Building facade

- Blockwork walls with insulated render system
- Aluminium window system
- Glazed timber doors, motorised where required
- Architectural screen - Vertical translucent glass or polycarbonate elements attached to the steel sub structure, 500mm catwalk behind the louvre brise soleil system for cleaning and maintenance

8. Steel canopy structure with aluminium louvers



03 Architecture

>> MEP Strategy

THERMAL COMFORT

The laboratory spaces will be mechanically ventilated to maintain suitable environments for the science being undertaken in them, particularly in relation temperature, humidity, cleanliness of incoming air and the ability to maintain an appropriate pressure regime / air flow cascade.

Other spaces in the building that have an adjacency with the façade will be assessed for their viability to be provided with natural ventilation as the primary means of providing sufficient fresh air to the occupants. Such spaces include the write-up and office accommodation.

When considering the feasibility for natural ventilation, or utilisation of natural ventilation in a mixed mode ventilation scenario, the following key considerations will be addressed:

- Energy efficiency of solutions
- Acoustic impacts of opening façade
- Air quality
- User comfort and expectations

MECHANICAL DESIGN AND DISTRIBUTION OF SERVICES

The general principle for mechanical plant is that wet, heavy services are located in the basement areas.

- a compressor station for the preparation and distribution of compressed air
- boiler room
- space with heat station for the preparation of cooling and heating medium
- sprinkler engine room
- water tanks

Air handling plant and heat rejection plant is at roof level. Some air handling plant will be located in the building for the specialist laboratories provided with interstitial floors. All services are distributed through the building via a series of dedicated risers positioned around the cores. Where possible, all risers are dedicated or similar services (i.e. vent located in one riser, all cold wet services in another riser, and hot services in another).

At each floor plate, the services exit the risers, with appropriate fire protection. Services shall generally distribute within corridor ceiling voids, rather than directly over occupied spaces. Branches shall then be taken into occupied spaces, where they shall distribute further.

Points of isolation shall be provided at the point of exit from risers, and for each individual room served, to allow services to be readily isolated and modified without affecting other areas of the building.

Where laboratories are provided with an interstitial floor void ductwork and associated ancillaries (control dampers, HEPA filters, heater batteries, gas tight dampers etc.) are all to be contained within this void, to allow for ease of maintenance.

ELECTRICAL INSTALLATION AND EQUIPMENT

Lighting

The building will be designed to maximise natural daylight where possible. The building has been designed with 'courtyards' to limit the depth of the building and to offer more accommodation on the buildings perimeter. This in turn will improve daylighting.

Artificial lighting

Lighting systems throughout the building will be designed to achieve the following objectives:

Safety and Security

The lighting installation will provide a safe means for building occupants to move around the floor under normal conditions and escape from the building in emergency conditions.

Lighting Levels

The illuminance levels in the main laboratories, collaboration areas, offices etc and will be designed to meet the demands of the task and function of the lit spaces.

Visual Environment

The lighting design will enhance the form of the building, provide interest and assist in the movement of the building users whilst integrating with the architectural vision for the floor.

Energy Efficiency

The lighting installation will be designed to minimise energy consumption whilst fulfilling the lighting levels criteria. This will be achieved by the choice of LED luminaires. In addition, intelligent lighting controls will be provided in the form of occupancy sensing and individual control. Luminaires in areas of the building which have enough daylight penetration will be controlled via daylight sensors. The artificial lighting levels will be reduced when daylight is available. The luminaire control will dim or raise the output of the luminaire as the level of available daylight varies rather than switch the luminaires on or off. Gradually raising the level of artificial lighting as the available level of daylight reduces provides a steadier level of lighting for building users rather than simply turning lights off once a daylight threshold has been reached.

Intelligent buildings

This project presents an interesting opportunity to consider digital transformation for an Intelligent Building (IB). A common digital platform can realise enhanced user experience, enhanced facilities management, and offer a rich data to enable analysis of building performance.

For this project we would consider a Converged Network System. This would provide connectivity between a number of systems and services. This would include all the buildings systems such as BMS, Lighting, fire alarm and energy management. Also connected to this system could be a number of features designed to enhance the user experience such as workplace utilisation, event scheduling, parking and so on.

METERING

A comprehensive metering system monitoring electricity, water and HVAC energy use will be installed. The metering system will be installed so that data collection occurs automatically from every metered point.

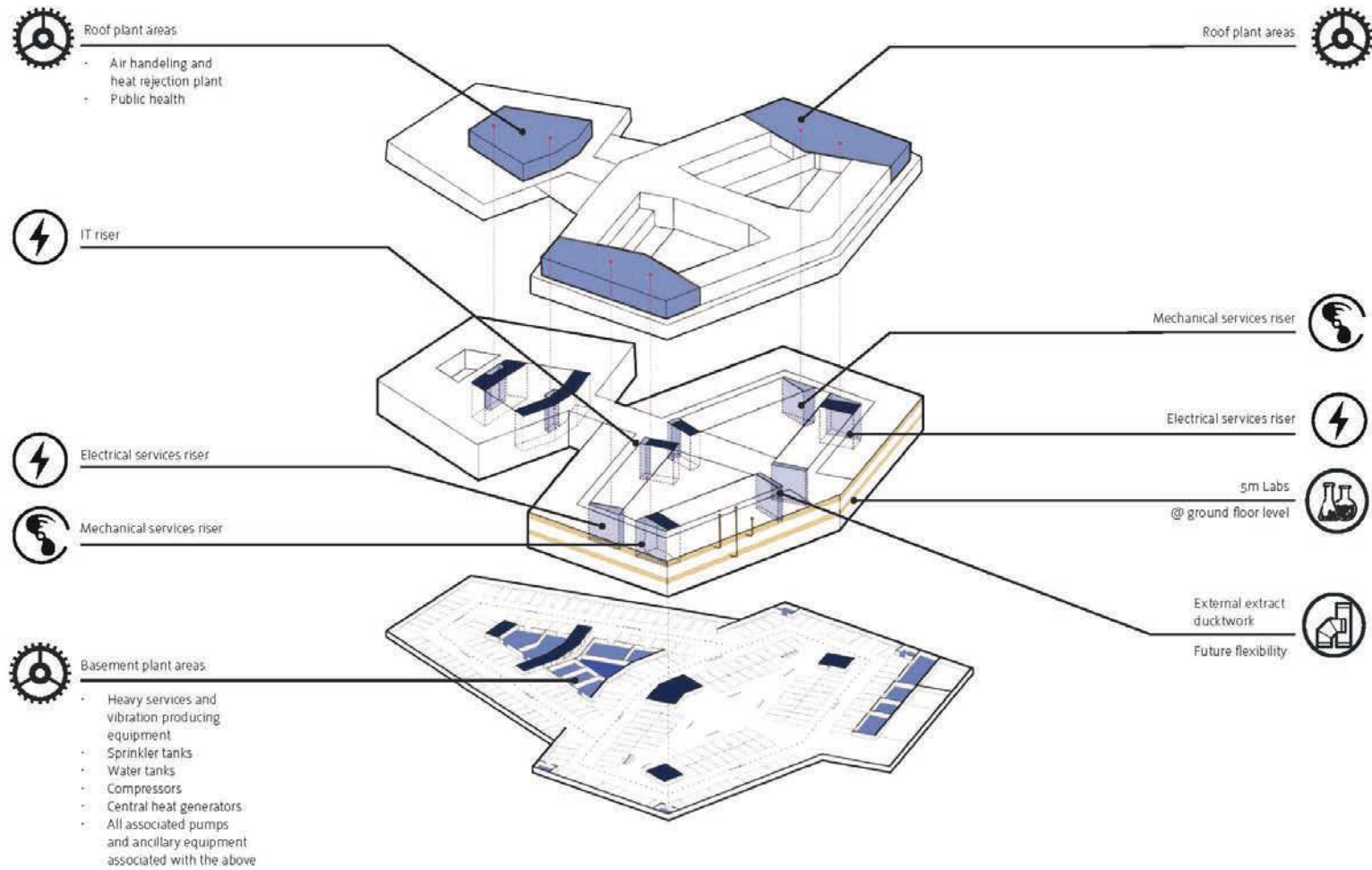
Data from the metering system should be combined with operational data from the BMS to allow analysis of building operation. This would then allow the performance of the building and its subsystems to be assessed and improved. Real time and recent historical trends (typically over 10 days) and information graphics could be made available to the building users and facility management teams. This information allows the FM teams to act to improve building operation and should also be used to drive behaviour change by the building users to reduce energy consumption.

Electrical diversity

It is understood that all the laboratories can operate simultaneously but clearly not all loads will occur simultaneously. We could apply diversity as suggested below:

03 Architecture

>> MEP Strategy



03 Architecture

>> Structural Design

Vrsta objekta: Monolitna armiranobetonska konstrukcija

Tip temeljenja: Globoko, na uvrtnih AB pilotih $d = 120$ cm

Statični sistem objekta: Mešani sistem (stebri, stene)

ZASNOVA KONSTRUKCIJE

Nosilna konstrukcija objekta bo armiranobetonska, globoko temeljena na uvrtnih pilotih. Predviden premer pilotov je $d = 120$ cm. Dolžina pilotov bo cca $l = 20.0$ m. Zaradi zahtevnih geoloških in hidrogeoloških razmer v tleh, bo končna dimenzija, dolžina in nosilnost pilotov določena v nadaljnjih fazah projektiranja.

Nad glavami pilotov tečejo pilotne grede dimenzij $b/h = 140/140$ cm (višina skupaj s ploščo). Med gredami se zaradi visokega hidrostatičnega pritiska predvidi talna plošča debeline $d = 35$ cm. Celotno klet objekta bo potrebno izvesti kot vodo neprepustni keson po principu bele kadi.

Vzhodni in zahodni del objekta sta med seboj dilatirana. Povezava med obema objektoma je predvidena z jekleno povezovalno konstrukcijo, pri kateri so predvideni takšni spoji, da omogočajo pomike. Dilatacijski enoti v podzemnem delu sta med seboj povezani z dilatacijskimi profili oz. tesnilnimi trakovi, ki morajo ob ustrezni vgradnji in vzdrževanju zagotavljati vodotesnost in trajnost objekta.

Nosilni sistem kleti predstavljajo AB stebri dimenzije $b/h = 50/120$ cm, $b/h = 50/80$ cm in $b/h = 50/40$ cm ter nosilne AB stene, debeline 25 cm. Zasute stene so debeline $d = 30$ cm.

V področju zaklonišča so zunanje stene in plošča nad kletjo debeline 50.0 cm.

V horizontalni ravnini zadostno togost konstrukcije zagotavljajo AB plošče. Plošča nad kletjo je debeline $d = 28$ cm. – 35 cm. Zasuti del plošče nad kletjo je debeline $d = 40$ cm.

Plošča je pohodna z upoštevanjo koristno obtežbo 5 kN/m² (zbiranje ljudi) in obtežbo nasutja višine skladno s predvideno sestavo tlakov.

Etažne plošče so debeline $d = 28$ cm. – 32 cm. Za prevzem višje prebojne sile se pod kritičnimi točkami ab plošče umestijo vute.

MATERIJALI

Uporabiti je potrebno ustrezne materiale:

Beton (v skladu s SIST EN 206:2013, SIST EN 1026:2016, SIST EN 13670:2010/ A101:2010)

Konstruktivsko jeklo za armiranje material B 500B J2 po SIST EN 10025, SIST EN 10210 in SIST EN 102

OBTEŽBE

> Osnovne obtežbe

Stalni vplivi (lastna teža elementov nosilne konstrukcije in dodatna stalna obtežba) predstavljajo vertikalno obtežbo na konstrukcijo. Dodatno je upoštevan zemeljski pritisk in hidrostatični pritisk. Spremenljivi vplivi (vertikalni in horizontalni), ki delujejo na objekt so:

- vplivi koristnih obtežb za kategorije:
 - C2 – površine s pritrjenimi sedeži,
 - C3 – površine v javnih in upravnih stavbah
 - C5 – površine na katerih lahko pride do gneče (površine kjer se zbirajo ljudje),
 - E1 – površine, kjer je možno kopiciti blago,
 - F – prometne in parkirne površine za lahka vozila,
 - H – strehe, dostopne le za normalno vzdrževanje in popravila.
- vplivi snega za področje Ljubljane
- vplivi vetra za področje Ljubljane.

> Izredna obtežba

Potresna obtežba

Izredno obtežbo predstavlja potres. Objekt je po pregledni karti ARSO lociran v potresni coni s projektnim pospeškom temeljnih tal $a_g = 0.25 \times g$. Konstrukcija je analizirana v pogojih vzbujanja s seizmičnimi pospeški. Faktor pomembnosti objekta je 1.0. V analizi je upoštevan tip tal C.

Intervencijska pot

Intervencijska pot čez ploščo nad kletjo ni predvidena.

Zahteve za zaklonilnike

Upošteva se Pravilnik o tehničnih normativih za zaklonišča in zaklonilnike. 11. člen pravilnika narekuje: »Pri ostalih novogradjenih objektih, pri katerih gradnja zaklonišč ni obvezna, načrtovani pa so v območju naselij z obvezno gradnjo zaklonišč, je treba ojačati ploščo in elemente, ki podpirajo ploščo nad prvo etažo tako, da zdrži vplive rušenja objekta nanjo.«

Zagotoviti je potrebno dvema pogojema pravilnika, in sicer:

-(8. in 45. člen pravilnika) upoštevati je potrebno nadomestno vertikalno obtežbo ruševin: $P = 10$ kN/m², na vplivnem območju ruševin $d = H/4$; H – višina objekta (merjeno od tal do spodnjega roba strehe)

-(40. in 127. člen pravilnika) konstrukcijsko je potrebno povezati predelne stene zaklonilnika z nosilnimi elementi tako, da lahko zdržijo obtežbe zaradi zračnega udara. Vpliv zračnega udara se nadomesti s statično obtežbo pravokotno na površine elementov konstrukcije zaklonišča in znaša: $p = 30$ kPa.

03 Architecture

>> Sustainability

SUSTAINABILITY AND ENERGY EFFICIENCY

The building will be designed with energy efficiency and reduction of carbon emissions as a priority. The design will adhere to the 'Rules on efficient use of energy in buildings' TSG-1- 004:2010. The strategy for the design of the building is to follow the Energy Hierarchy approach. This 'fabric first' approach aims to reduce energy demand in the first instance by passive design measures such as high fabric performance. Secondly, energy efficient systems will be used to further reduce the carbon emissions of the development. Finally, the integration of low and zero carbon energy sources will be considered in order to meet the carbon emission targets.

Fabric first

- Optimise the façade thermal performance – U and G values
- Solar shading
- Maximising opportunities for natural/mixed mode ventilation including utilising the buildings mass for night cooling
- Maximising daylight

Energy efficient systems

The following will be considered as the design progresses:

- High efficiency heat recovery on all mechanical ventilation systems
- Optimising ventilation and air change rates using demand control ventilation
- Low face velocity fume cupboards
- Automatic sash closing devices on fume cupboards
- High efficiency motors incorporated into all building services
- Collocation of all -80 freezer to a central space, so cooling can be delivered efficiently, and heat recovery incorporated.
- Provision of a lighting control system with daylight linking and occupancy sensing where appropriate to limit unnecessary use of electric lighting
- Provision of a full building energy management system with energy metering to control and monitor all major energy consuming plant and systems.

Low and zero carbon energy sources

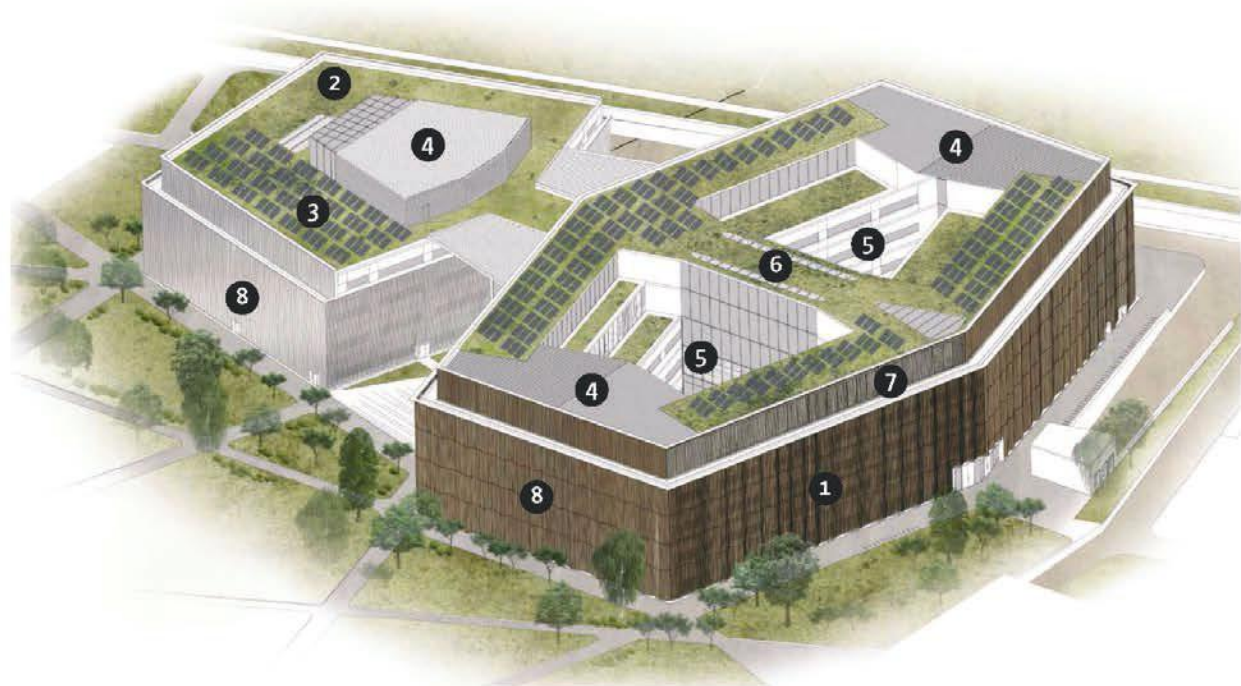
The following will be considered as the design progresses:

- Solar panels for hot water generation
- Photovoltaic panels
- Air source Heat pumps for heating and cooling

Key features

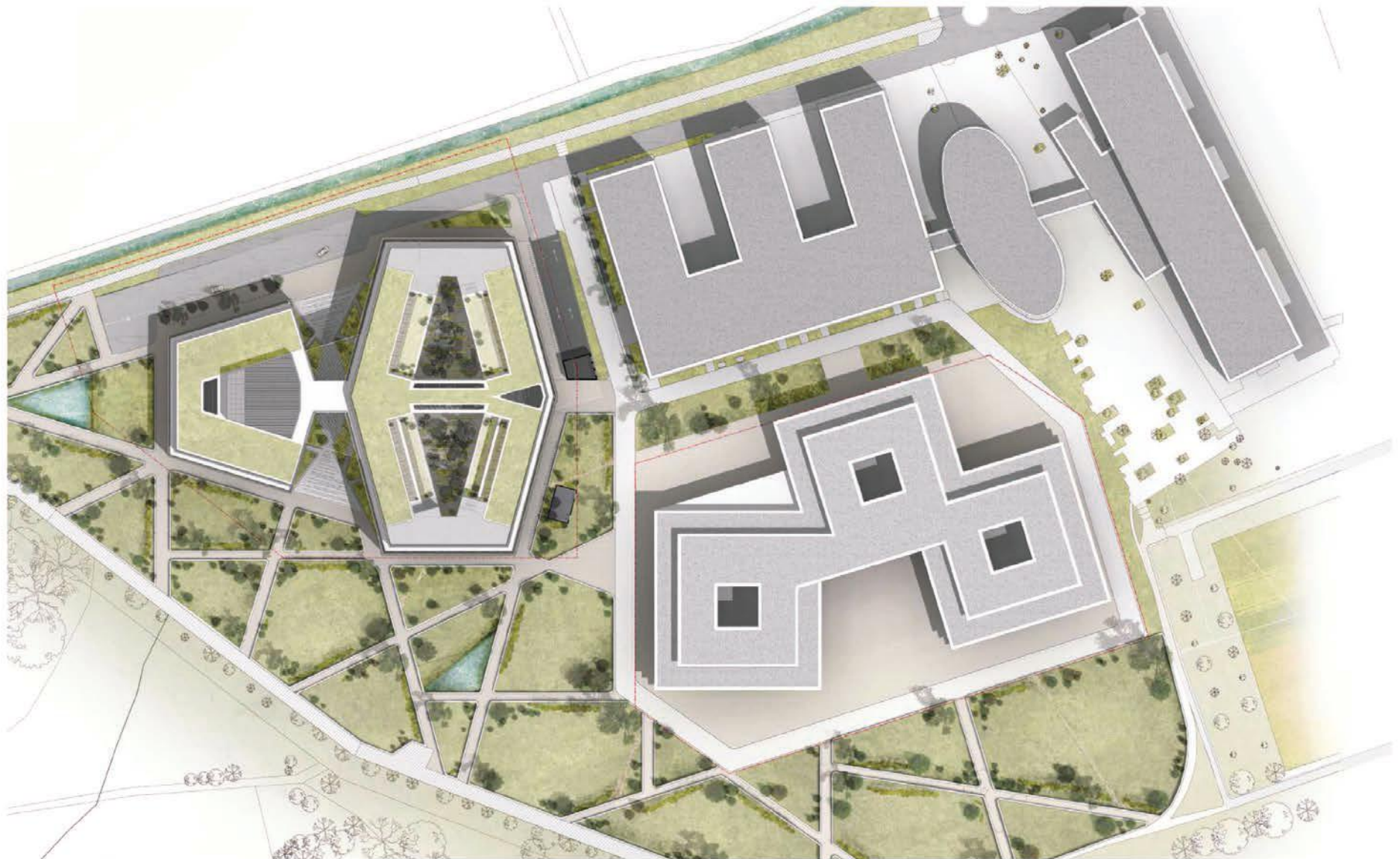
1. High performing building envelope
2. Rain water collection
3. Solar panels
4. High efficiency plant with heat recovery
5. 'Atriums' offer improved daylighting
6. Green roof to enhance biodiversity
7. Mixed mode ventilation in office areas utilising thermal mass
8. Façade screening to limit solar gains
9. Laboratories designed to reduce energy consumption

2: faza arhitektura UL FFA | Code: 33693



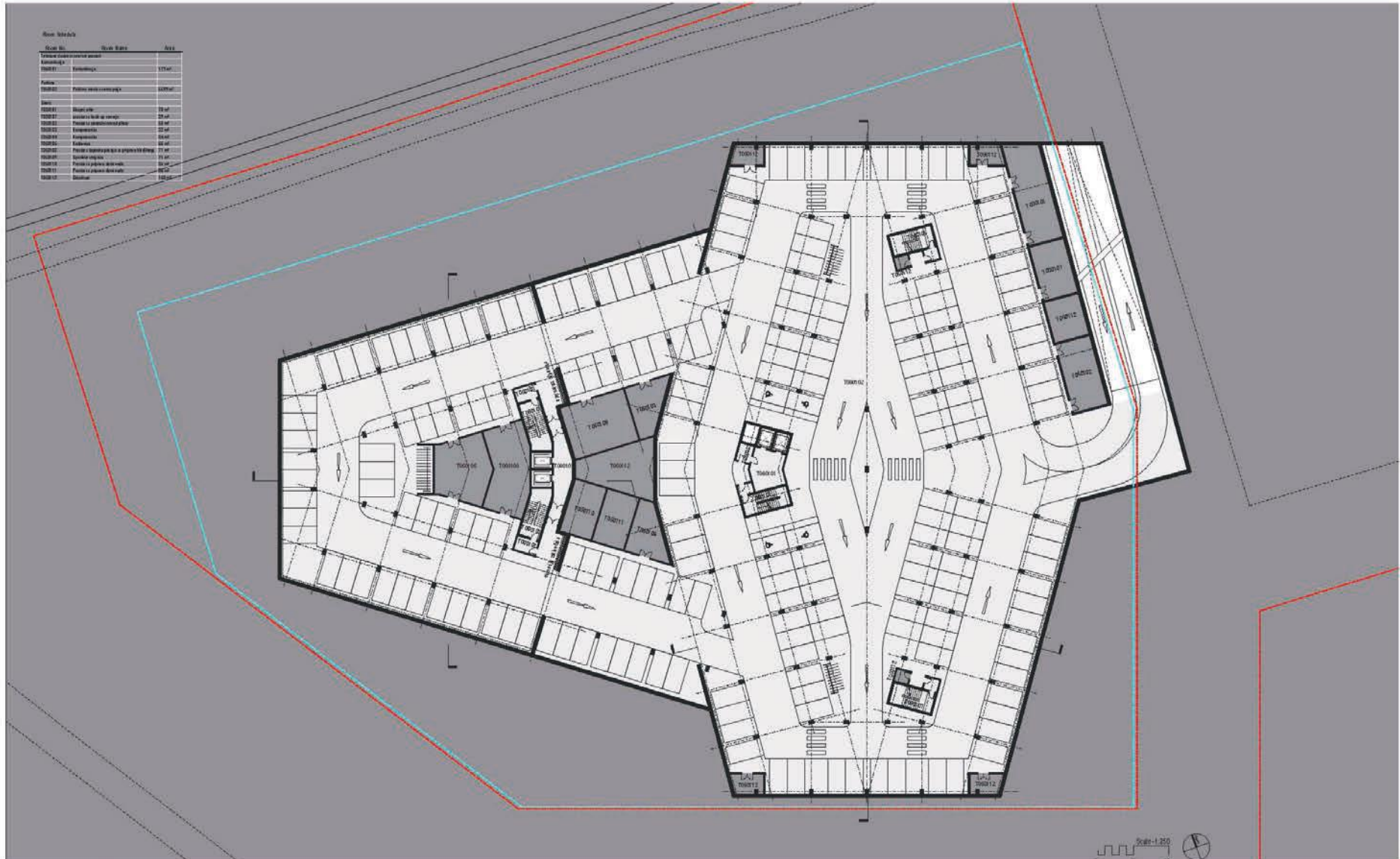
04 Design Drawings

Site Plan | M 1:500 @ A1



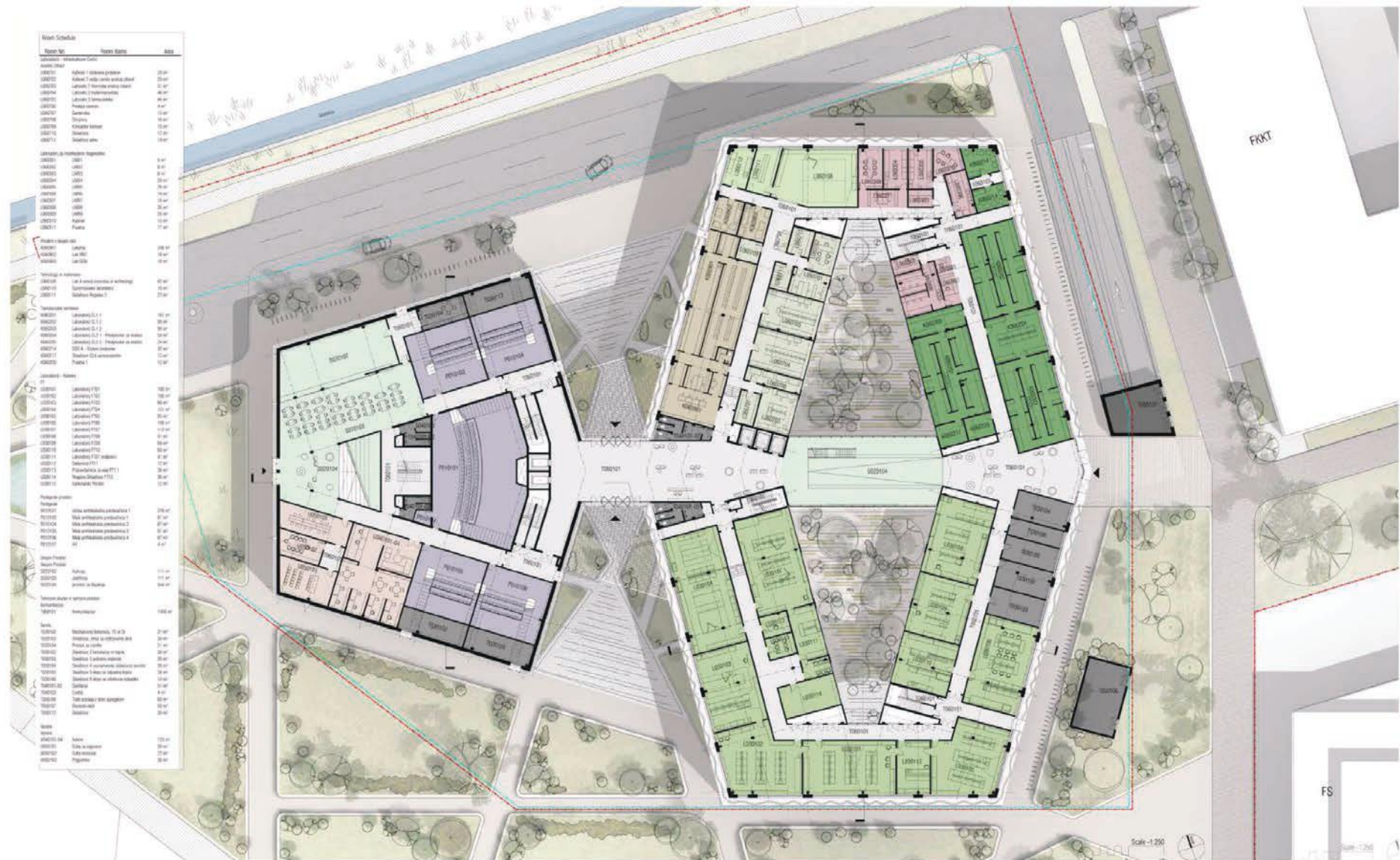
04 Design Drawings

Basement | M 1:250 @ A1



04 Design Drawings

Ground floor plan | M 1:250 @ A1



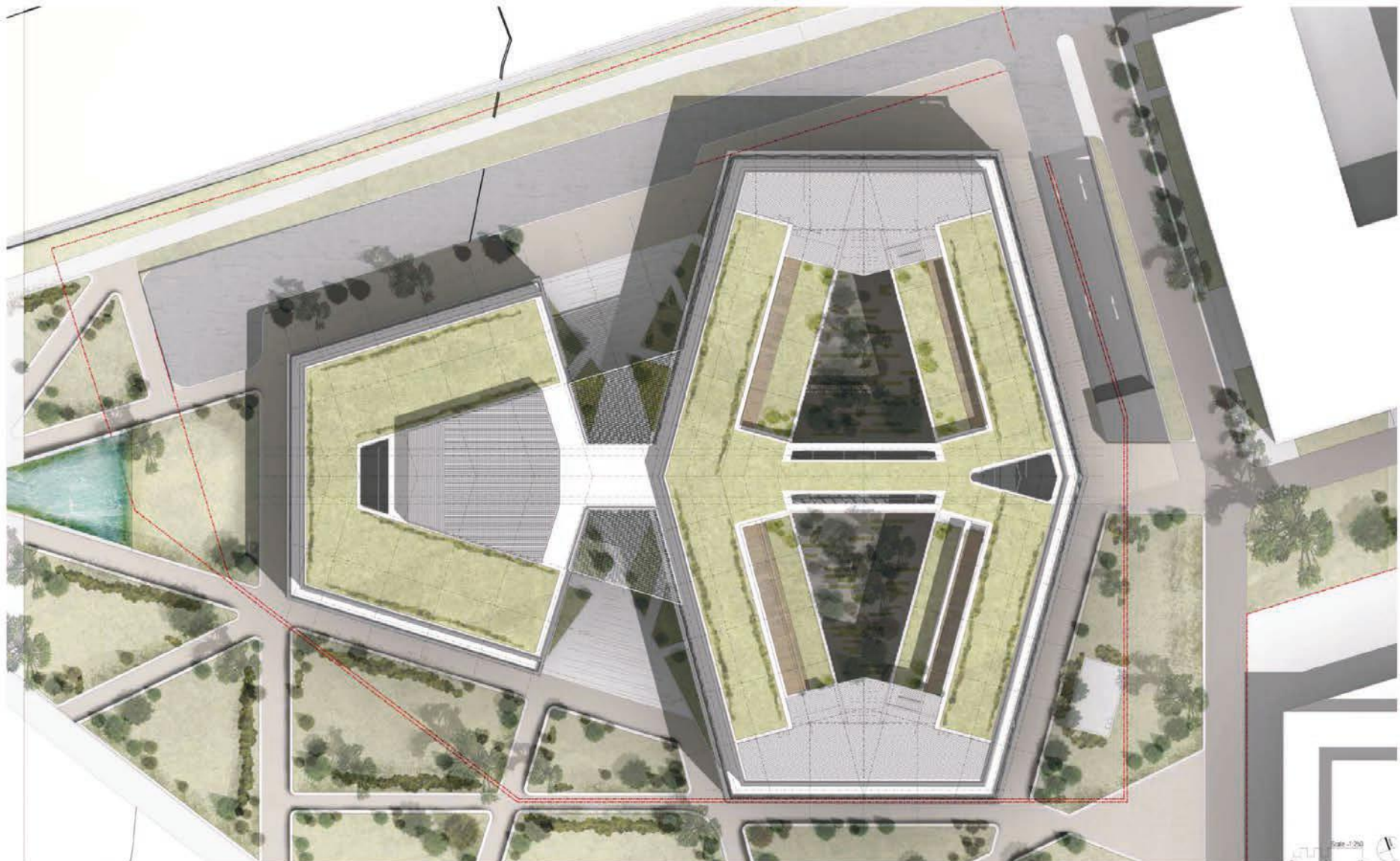
04 Design Drawings

Level 01 | M 1:250 @ A1



04 Design Drawings

Roof plan | M 1:250 @ A1



04 Design Drawings

Sections



04 Design Drawings

Elevations

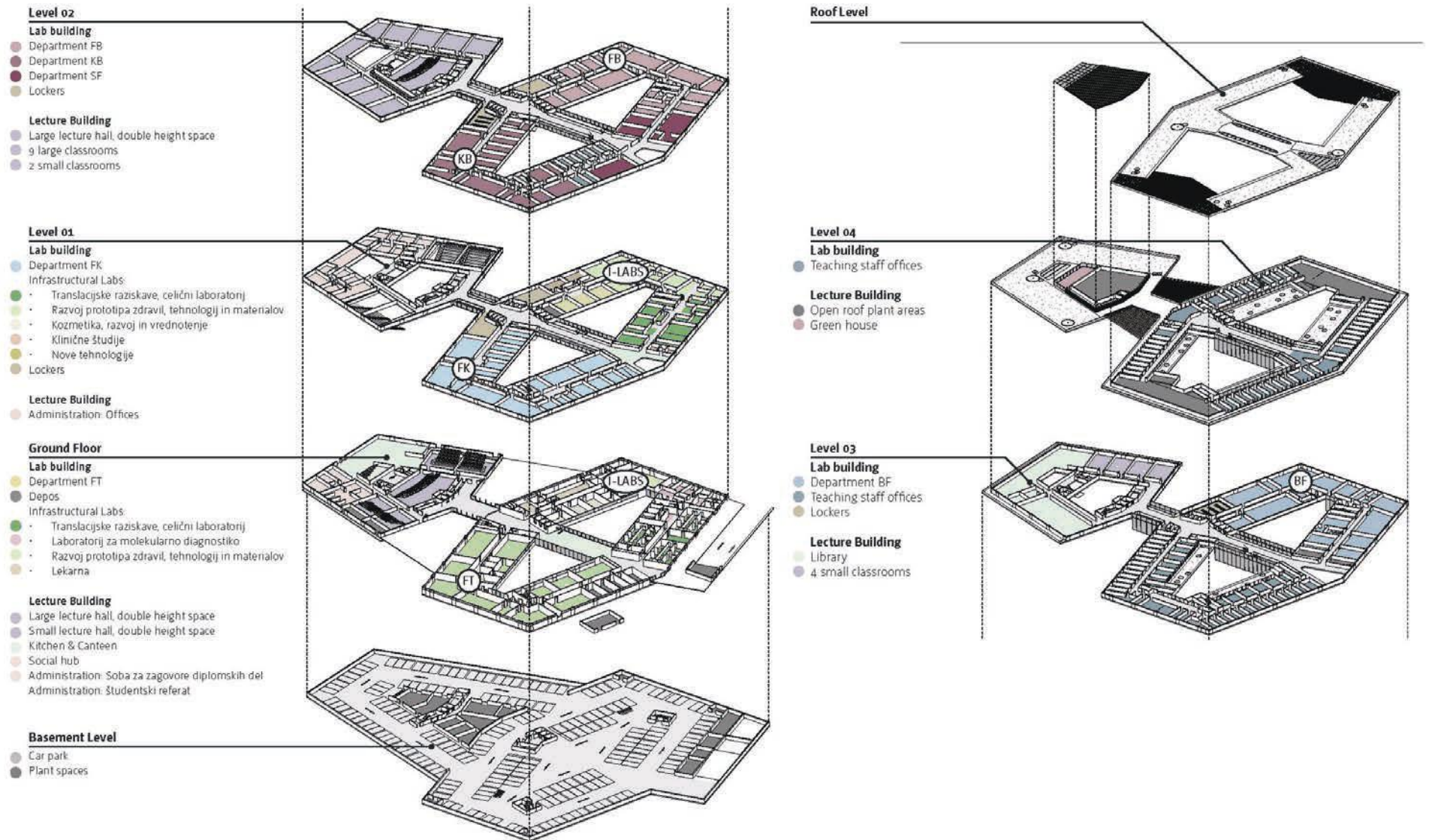


04 Design Drawings

Elevations



05. Colour Coded Axonometric plans



06. Area Schedule

Rekapitulacija neto površin

sklopi	podskupina prostorov	izhodiščne površine		natečajna zasnova		
		površina sklopa	površine podsklopa	površina skupine	površina podskupine	
Kabineti		1,943.0 m²		2,096.0 m²		108%
	Kabineti		1,943.0 m ²		2,096.0 m ²	
Laboratoriji		7,966.0 m²		8,148.0 m²		102%
	Laboratorij		7,966.0 m ²		8,148.0 m ²	
Pedagoški prostori		2,024.0 m²		2,131.0 m²		105%
	Predavalnice in učilnice		2,024.0 m ²		2,131.0 m ²	
Skupni prostori		1,113.0 m²		1,362.0 m²		122%
	Skupni prostori		1,113.0 m ²		1,362.0 m ²	
Uprava		584.5 m²		664.0 m²		114%
	Uprava		584.5 m ²		664.0 m ²	
Tehnične službe in servisi		5,452.0 m²		14,598.0 m²		268%
	Tehnični prostori in servisi		1,952.0 m ²		2,274.0 m ²	
	Komunikacije		3,500.0 m ²		5,715.0 m ²	
	Parkirna mesta z vozno potjo		0.0 m ²		6,609.0 m ²	
skupaj		19,082.5 m²		28,999.0 m²		
	skupaj brez parkirnih mest	19,082.5 m ²		22,390.0 m ²		117%

06. Area Schedule

skupina prostorov

Laboratoriji - Katedre

šifra prostora v risbi	objekt, etaža	ime prostora	sklop	katedra	sklop dejavnosti	izhodiščna površina	površina v idejni zasnovi	število uporabnikov
L010101	A-02	Laboratorij, FB-geni, generični	1	FB	Pedagoški laboratorij	100.0 m ²	96.0 m ²	24
L010102	A-02	Laboratorij, FB-gen2, generični	1	FB	Pedagoški laboratorij	100.0 m ²	95.0 m ²	24
L010103	A-02	Laboratorij, FB-spec, specializiran farmakognostični laboratorij	1	FB	Pedagoški laboratorij	100.0 m ²	100.0 m ²	24
L010104	A-02	Laboratorij, FB-FKG1, priprava rastlinskih ekstraktov	1	FB	Raziskovalni laboratorij	50.0 m ²	53.0 m ²	5
L010105	A-02	Laboratorij, FB-FKG2, kozm. sestavine naravnega izvora	1	FB	Raziskovalni laboratorij	50.0 m ²	48.0 m ²	5
L010106	A-02	Laboratorij, FB-FKG3 (kromatografija)	1	FB	Raziskovalni laboratorij	36.0 m ²	36.0 m ²	3
L010107	A-02	Laboratorij, FB-FKG4 (plinska kromatografija)	1	FB	Raziskovalni laboratorij	36.0 m ²	36.0 m ²	2
L010108	A-02	Laboratorij, FB-FKG1.1 (priprava vzorcev)	1	FB	Raziskovalni laboratorij	15.0 m ²	17.0 m ²	/
L010109	A-02	Laboratorij, FB1, mikrobiološki (non-GMO)	1	FB	Molekularna/celična biologija in biotehnologija	36.0 m ²	36.0 m ²	3
L010110	A-02	Laboratorij, FB2, rutinske (pogoste) opreacije	1	FB	Molekularna/celična biologija in biotehnologija	36.0 m ²	36.0 m ²	7
L010111	A-02	Mikroskopirnica	1	FB	Pedagoški laboratorij	64.0 m ²	64.0 m ²	24
L010112	A-02	Pripravljalnica, FB3	1	FB	Pedagoški laboratorij	24.0 m ²	23.0 m ²	/
L010113	A-02	Pripravljalnica, FB-spec in Mikroskopirnica	1	FB	Pedagoški laboratorij	24.0 m ²	23.0 m ²	/
L010114	A-02	Pripravljalnica, shramba	1	FB	Molekularna/celična biologija in biotehnologija	18.0 m ²	21.0 m ²	/
L010115	B-04	Rastlinjak	1	FB	Raziskovalni laboratorij	40.0 m ²	79.0 m ²	/
L010116	A-02	Skladišče, regalno	1	FB	Raziskovalni laboratorij	12.0 m ²	10.0 m ²	/
L010117	A-02	Skladišče, prostor za hladilnike in zmrzovalnike	1	FB	Molekularna/celična biologija in biotehnologija	9.0 m ²	9.0 m ²	/
L010118	A-02	Spremljevalna pisarna 1	1	FB	Raziskovalni laboratorij	12.0 m ²	12.0 m ²	4
L010119	A-02	Spremljevalna pisarna 2	1	FB	Raziskovalni laboratorij	12.0 m ²	12.0 m ²	4
L010120	A-02	Seminarški prostor (pedagogi)	1	FB	Pedagoški laboratorij	12.0 m ²	12.0 m ²	6
L010121	A-02	Seminarški prostor, FB4	1	FB	Pedagoški laboratorij	36.0 m ²	49.0 m ²	24
L010122	A-02	Seminarški prostor, FB5	1	FB	Pedagoški laboratorij	36.0 m ²	49.0 m ²	24
L010123	A-02	Skladišče, prostor za vakumsko črpalko in skladišče plinov za GC-MS	1	FB	Raziskovalni laboratorij	10.0 m ²	10.0 m ²	/
L010124	A-02	Laboratorij, prostor za liofilizator in druge hrupne naprave	1	FB	Raziskovalni laboratorij	9.0 m ²	9.0 m ²	/
L010125	A-02	Knjižnica FB	1	FB	Raziskovalni laboratorij	40.0 m ²	42.0 m ²	/
L020101	A-02	Laboratorij KB1, EMŠF (vaje) 1	2	KB	Pedagoški laboratorij	100.0 m ²	100.0 m ²	24
L020102	A-02	Laboratorij KB2, LBM/KOZM (vaje) 2	2	KB	Pedagoški laboratorij	100.0 m ²	100.0 m ²	24
L020103	A-02	Laboratorij KB3, LBM/KOZM (vaje) 3	2	KB	Pedagoški laboratorij	50.0 m ²	52.0 m ²	16
L020104	A-02	Laboratorij KB4, LBM/KOZM (vaje) 4	2	KB	Pedagoški laboratorij	50.0 m ²	50.0 m ²	16
L0201105	A-02	Pripravljalnica KB5, velika	2	KB	Pedagoški laboratorij	40.0 m ²	40.0 m ²	/
L020106	A-02	Pripravljalnica KB6, velika	2	KB	Pedagoški laboratorij	40.0 m ²	41.0 m ²	/
L020107	A-02	Pripravljalnica KB7, manjša	2	KB	Pedagoški laboratorij	18.0 m ²	20.0 m ²	/
L020108	A-02	Pripravljalnica KB8, manjša	2	KB	Pedagoški laboratorij	18.0 m ²	22.0 m ²	/
L020109	A-02	Skladišče KB9, prostor za aparature	2	KB	Pedagoški laboratorij	24.0 m ²	24.0 m ²	/
L020110	A-02	Skladišče KB10, prostor za aparature	2	KB	Pedagoški laboratorij	24.0 m ²	24.0 m ²	/
L020111	A-02	Laboratorij KB11, instrumentalni A	2	KB	Raziskovalni laboratorij	36.0 m ²	36.0 m ²	/
L020112	A-02	Laboratorij KB12, instrumentalni B	2	KB	Raziskovalni laboratorij	75.0 m ²	75.0 m ²	/
L020113	A-02	Laboratorij KB13, študentski	2	KB	Raziskovalni laboratorij	36.0 m ²	36.0 m ²	10

06. Area Schedule

L020114	A-02	Laboratorij KB14, izolacija nukleinskih kislin	2	KB	Raziskovalni laboratorij	36.0 m ²	36.0 m ²	/
L020115	A-02	Laboratorij KB15, analizo nukleinskih kislin	2	KB	Raziskovalni laboratorij	48.0 m ²	49.0 m ²	/
L020116	A-02	Laboratorij KB 16, za razvoj funkcijskih testov v laboratorijski medicini	2	KB	Pedagoški laboratorij	36.0 m ²	37.0 m ²	/
L020117	A-02	Pripravljalnica KB17, reagenti, raztopine, skladiščenje kemikalij	2	KB	Raziskovalni laboratorij	36.0 m ²	36.0 m ²	/
L020118	A-02	Skladišče KB18, prostor za zmrzovalnike, posode s tekočim dušikom	2	KB	Raziskovalni laboratorij	18.0 m ²	20.0 m ²	/
L020119	A-02	Administracija KB19, prostor za strokovne delavke / sodelavke	2	KB	Raziskovalni laboratorij	24.0 m ²	24.0 m ²	3
L020120	A-02	Seminarski prostor (pedagogi)	2	KB	Raziskovalni laboratorij	12.0 m ²	16.0 m ²	6
L030101	A-00	Laboratorij FT01	3	FT	Pedagoški laboratorij	100.0 m ²	100.0 m ²	24
L030102	A-00	Laboratorij FT02	3	FT	Pedagoški laboratorij	100.0 m ²	100.0 m ²	24
L030103	A-00	Laboratorij FT03	3	FT	Pedagoški laboratorij	88.0 m ²	88.0 m ²	16
L030104	A-00	Laboratorij FT04	3	FT	Pedagoški laboratorij	140.0 m ²	131.0 m ²	16
L030105	A-00	Laboratorij FT05	3	FT	Pedagoški laboratorij	100.0 m ²	95.0 m ²	24
L030106	A-00	Laboratorij FT06	3	FT	Pedagoški laboratorij	100.0 m ²	100.0 m ²	16
L030107	A-00	Laboratorij FT07	3	FT	Pedagoški laboratorij	100.0 m ²	113.0 m ²	24
L030108	A-00	Laboratorij FT08	3	FT	Raziskovalni laboratorij	88.0 m ²	91.0 m ²	/
L030109	A-00	Laboratorij FT09	3	FT	Raziskovalni laboratorij	64.0 m ²	69.0 m ²	/
L030110	A-00	Laboratorij FT10	3	FT	Raziskovalni laboratorij	54.0 m ²	60.0 m ²	/
L030111	A-00	Laboratorij FT07.1, podporni	3	FT	Pedagoški laboratorij	36.0 m ²	41.0 m ²	/
L030112	A-00	Laboratorij FT00, delavnica	3	FT	Raziskovalni laboratorij	12.0 m ²	12.0 m ²	/
L030113	A-00	Pripravljalnica FT01.1, vaje	3	FT	Pedagoški laboratorij	36.0 m ²	36.0 m ²	/
L030114	A-00	Skladišče, regalno + tehcnica	3	FT	Pedagoški laboratorij	36.0 m ²	36.0 m ²	/
L030115	A-00	Seminarski prostor (pedagogi)	3	FT	Pedagoški laboratorij	12.0 m ²	12.0 m ²	6
L040101	A-03	Laboratorij BF01, veliki	4	BF	Pedagoški laboratorij	100.0 m ²	107.0 m ²	24
L040102	A-03	Laboratorij BF02, veliki	4	BF	Pedagoški laboratorij	100.0 m ²	101.0 m ²	24
L040103	A-03	Laboratorij BF03, mali	4	BF	Pedagoški laboratorij	70.0 m ²	70.0 m ²	16
L040104	A-03	Laboratorij BF04, test. Raztapljanja - večji	4	BF	Raziskovalni laboratorij	135.0 m ²	133.0 m ²	/
L040105	A-03	Laboratorij BF05, test. Raztapljanja - manjši	4	BF	Raziskovalni laboratorij	60.0 m ²	60.0 m ²	/
L040106	A-03	Laboratorij BF06, priprava bioloških vzorcev 1	4	BF	Raziskovalni laboratorij	50.0 m ²	50.0 m ²	/
L040107	A-03	Laboratorij BF07, priprava bioloških vzorcev 2	4	BF	Raziskovalni laboratorij	50.0 m ²	50.0 m ²	/
L040108	A-03	Laboratorij BF08, analitski 1	4	BF	Raziskovalni laboratorij	50.0 m ²	50.0 m ²	/
L040109	A-03	Laboratorij BF09, analitski 2	4	BF	Raziskovalni laboratorij	65.0 m ²	65.0 m ²	/
L040110	A-03	Laboratorij BF10, analitski 3	4	BF	Raziskovalni laboratorij	110.0 m ²	109.0 m ²	/
L040111	A-03	Laboratorij BF13, raziskave permabilnosti	4	BF	Raziskovalni laboratorij	70.0 m ²	70.0 m ²	/
L040112	A-03	Laboratorij BF14, temni (za mikroskope)	4	BF	Raziskovalni laboratorij	20.0 m ²	18.0 m ²	/
L040113	A-03	Laboratorij BF17, delo na "dry pharmacy" področij	4	BF	Raziskovalni laboratorij	44.0 m ²	45.0 m ²	/
L040114	A-03	Pripravljalnica BF01.1, shramba	4	BF	Pedagoški laboratorij	24.0 m ²	24.0 m ²	/
L040115	A-03	Skladišče BF11, občutljivi inštrumenti	4	BF	Raziskovalni laboratorij	18.0 m ²	22.0 m ²	/
L040116	A-03	Skladišče BF12, klimatske komore	4	BF	Raziskovalni laboratorij	18.0 m ²	20.0 m ²	/
L040117	A-03	Skladišče BF16, shramba	4	BF	Raziskovalni laboratorij	24.0 m ²	23.0 m ²	/
L040118	A-03	študij	4	BF	Raziskovalni laboratorij	10.0 m ²	13.0 m ²	/
L040119	A-03	Administracija BF15, prostor za vodenje dokumentacije	4	BF	Raziskovalni laboratorij	10.0 m ²	11.0 m ²	/
L040120	A-03	Seminarski prostor (pedagogi)	4	BF	Raziskovalni laboratorij	12.0 m ²	12.0 m ²	6
L040121	A-03	Laboratorij, BF1.2 pripravljalnica	4	BF	Pedagoški laboratorij	18.0 m ²	24.0 m ²	6
L040122	A-03	Skladišče, Prostor za shranjevanje bioloških vzorcev	4	BF	Raziskovalni laboratorij	10.0 m ²	12.0 m ²	6

06. Area Schedule

L050101	A-01	Laboratorij FK01, (vaje) farmacevska kemija III	5	FK	Pedagoški laboratorij	100.0 m ²	100.0 m ²	24
L050102	A-01	Laboratorij FK02, (vaje) farmacevska kemija II, toksikološka kemija	5	FK	Pedagoški laboratorij	100.0 m ²	109.0 m ²	24
L050103	A-01	Laboratorij FK03, (vaje) ostalo	5	FK	Pedagoški laboratorij	100.0 m ²	100.0 m ²	24
L050104	A-01	Laboratorij FK04, analizi laboratorij - analiza in nadzor	5	FK	Pedagoški laboratorij	100.0 m ²	100.0 m ²	24
L050105	A-01	Laboratorij FK05, sinteza 1	5	FK	Raziskovalni laboratorij	90.0 m ²	90.0 m ²	/
L050106	A-01	Laboratorij FK06, sinteza 2	5	FK	Raziskovalni laboratorij	90.0 m ²	90.0 m ²	/
L050107	A-01	Laboratorij FK07, sinteza 3	5	FK	Raziskovalni laboratorij	36.0 m ²	40.0 m ²	/
L050108	A-01	Laboratorij FK08, sinteza 4	5	FK	Raziskovalni laboratorij	36.0 m ²	36.0 m ²	/
L050109	A-01	Laboratorij FK09, sinteza 5	5	FK	Raziskovalni laboratorij	36.0 m ²	36.0 m ²	/
L050110	A-01	Laboratorij FK10, sinteza 6	5	FK	Raziskovalni laboratorij	36.0 m ²	36.0 m ²	/
L050111	A-01	Laboratorij FK11, sinteza 7	5	FK	Raziskovalni laboratorij	36.0 m ²	36.0 m ²	/
L050112	A-01	Laboratorij FK12, sinteza 8	5	FK	Raziskovalni laboratorij	36.0 m ²	36.0 m ²	/
L050113	A-01	Laboratorij FK13, sinteza 9	5	FK	Raziskovalni laboratorij	36.0 m ²	36.0 m ²	/
L050114	A-01	Laboratorij FK14, sinteza 10	5	FK	Raziskovalni laboratorij	36.0 m ²	36.0 m ²	/
L050115	A-01	Laboratorij FK15, mehanična tehnologija	5	FK	Raziskovalni laboratorij	45.0 m ²	45.0 m ²	/
L050116	A-01	Laboratorij FK16, biološka testiranja	5	FK	Raziskovalni laboratorij	45.0 m ²	45.0 m ²	/
L050117	A-01	Laboratorij FK17, posebne aparature 1	5	FK	Raziskovalni laboratorij	18.0 m ²	18.0 m ²	/
L050118	A-01	Laboratorij FK18, posebne aparature 2	5	FK	Raziskovalni laboratorij	18.0 m ²	18.0 m ²	/
L050119	A-01	Laboratorij FK19, soba za NMR	5	FK	Raziskovalni laboratorij	36.0 m ²	36.0 m ²	/
L050120	A-01	Laboratorij FK20, strojnica (soba z utekočinjenimi plini)	5	FK	Raziskovalni laboratorij	15.0 m ²	10.0 m ²	/
L050121	A-01	Pripravljalnica FK01.1, (vaje) 1	5	FK	Pedagoški laboratorij	30.0 m ²	29.0 m ²	/
L050122	A-01	Pripravljalnica FK01.2, (vaje) 2	5	FK	Pedagoški laboratorij	20.0 m ²	23.0 m ²	/
L050123	A-01	Pripravljalnica FK01.3, (vaje) 3	5	FK	Pedagoški laboratorij	20.0 m ²	31.0 m ²	/
L050124	A-01	Seminarski prostor (pedagogi)	5	FK	Raziskovalni laboratorij	12.0 m ²	11.0 m ²	6
L060101	A-02	Laboratorij SF1, center	9	SF	Pedagoški laboratorij	100.0 m ²	104.0 m ²	/
L060102	A-02	Laboratorij SF2, forum	9	SF	Pedagoški laboratorij	124.0 m ²	124.0 m ²	/
L060103	A-02	Laboratorij SF03, raziskovalni 1 (računalniški center)	9	SF	Raziskovalni laboratorij	50.0 m ²	50.0 m ²	10
L060104	A-02	Laboratorij SF04, raziskovalni 2	9	SF	Raziskovalni laboratorij	50.0 m ²	50.0 m ²	10
L060105	A-02	Seminarski prostor (pedagogi)	5	SF	Raziskovalni laboratorij	12.0 m ²	13.0 m ²	6

06. Area Schedule

skupina prostorov

Laboratoriji - Infrastrukturni Centri

šifra prostora v risbi	objekt, etaž ime prostora	sklop	katedra	sklop dejavnosti	izhodiščna površina	površina v idejni zasnovi	število uporabnikov	
L070101	A-01	Kabinet, načrtovanje formulacije, obdelava podatkov, pisanje poročil	6	vse katedre	razvoj prototipa zdravil, tehnologij in materialov	12.0 m ²	15.0 m ²	/
L070102	A-01	Kabinet, vodja centra za razvoj prototipa zdravil	6	vse katedre	razvoj prototipa zdravil, tehnologij in materialov	20.0 m ²	21.0 m ²	/
L070103	A-01	Laboratorij, tehnološki razvoj formulacij	6	vse katedre	razvoj prototipa zdravil, tehnologij in materialov	46.0 m ²	52.0 m ²	/
L070104	A-01	Laboratorij, mehanistična toksikologija	6	vse katedre	razvoj prototipa zdravil, tehnologij in materialov	30.0 m ²	39.0 m ²	/
L060105	A-01	Laboratorij, razvoj kemijskih sintez	6	vse katedre	razvoj prototipa zdravil, tehnologij in materialov	60.0 m ²	62.0 m ²	/
L060106	A-01	Laboratorij, in-silico raziskave	6	vse katedre	razvoj prototipa zdravil, tehnologij in materialov	35.0 m ²	35.0 m ²	3
L060107	A-01	Laboratorij, prostor za super računalnik	6	vse katedre	razvoj prototipa zdravil, tehnologij in materialov	35.0 m ²	35.0 m ²	3
L060108	A-00	Laboratorij, razvoj procesov in tehnologij	6	vse katedre	razvoj prototipa zdravil, tehnologij in materialov	90.0 m ²	92.0 m ²	/
L060109	A-01	Laboratorij, razvoj kemijskih sintez	6	vse katedre	razvoj prototipa zdravil, tehnologij in materialov	50.0 m ²	50.0 m ²	/
L060110	A-00	Laboratorij, spremljevalni laboratorij	6	vse katedre	razvoj prototipa zdravil, tehnologij in materialov	15.0 m ²	19.0 m ²	/
L060111	A-00	Skladišče, regalno 2	6	vse katedre	razvoj prototipa zdravil, tehnologij in materialov	20.0 m ²	23.0 m ²	/
L060112	A-01	Administracija, spremljevalna pisarna 1	6	vse katedre	razvoj prototipa zdravil, tehnologij in materialov	12.0 m ²	19.0 m ²	/
L060113	A-01	Administracija, spremljevalna pisarna 2	6	vse katedre	razvoj prototipa zdravil, tehnologij in materialov	12.0 m ²	13.0 m ²	/
L060114	A-01	Regalno skladišče		vse katedre	razvoj prototipa zdravil, tehnologij in materialov	14.0 m ²	17.0 m ²	/
Ko60201	A-00	Laboratorij CL01.1, celični 1 (s predprostorom za preoblačenje)	7	vse katedre	translacijske raziskave, celični laboratorij	100.0 m ²	101.0 m ²	/
Ko60202	A-00	Laboratorij CL01.2, celični 2 (s predprostorom za preoblačenje)	7	vse katedre	translacijske raziskave, celični laboratorij	100.0 m ²	99.0 m ²	/
Ko60203	A-00	Laboratorij CL01.3, celični 2 (s predprostorom za preoblačenje)	7	vse katedre	translacijske raziskave, celični laboratorij	100.0 m ²	99.0 m ²	/
Ko60204	A-00	Laboratorij, CL02.1, predprostor za analizo	7	vse katedre	translacijske raziskave, celični laboratorij	48.0 m ²	50.0 m ²	/
Ko60205	A-00	Laboratorij, CL02.3, predprostor za analizo	7	vse katedre	translacijske raziskave, celični laboratorij	24.0 m ²	24.0 m ²	/
Ko60206	A-01	Laboratorij, CL03, prostor za mikroskopijo	7	vse katedre	translacijske raziskave, celični laboratorij	18.0 m ²	22.0 m ²	/
Ko60207	A-01	Laboratorij CL 8, Elektroforetski	7	vse katedre	translacijske raziskave, celični laboratorij	50.0 m ²	52.0 m ²	/
Ko60208	A-01	Laboratorij CL 9, delo z živalskim modelom ribo cebrico	7	vse katedre	translacijske raziskave, celični laboratorij	18.0 m ²	18.0 m ²	/
Ko60209	A-01	Laboratorij, GSO 1, raziskovalni laboratorij	7	vse katedre	translacijske raziskave, celični laboratorij	79.0 m ²	85.0 m ²	/
Ko60210	A-01	Laboratorij, GSO 2 (soba z inkubatorji, delo z bakterijami in glivami)	7	vse katedre	translacijske raziskave, celični laboratorij	12.0 m ²	15.0 m ²	/
Ko60211	A-01	Laboratorij, GSO 3, prostor za delo z RNA	7	vse katedre	translacijske raziskave, celični laboratorij	20.0 m ²	26.0 m ²	/
Ko60212	A-01	Laboratorij, GSO 4, delo z GSO bakterijami	7	vse katedre	translacijske raziskave, celični laboratorij	20.0 m ²	25.0 m ²	/
Ko60213	A-01	Laboratorij, GSO 5, delo z bakterijskimi virusi	7	vse katedre	translacijske raziskave, celični laboratorij	40.0 m ²	38.0 m ²	/
Ko60214	A-00	Laboratorij, GSO 6, sistem biobanke	7	vse katedre	translacijske raziskave, celični laboratorij	30.0 m ²	32.0 m ²	/
Ko60215	A-01	Pripravljalnica CLO 5, skupna + skladiščni prostor	7	vse katedre	translacijske raziskave, celični laboratorij	37.0 m ²	38.0 m ²	/
Ko60216	A-01	Tehnični prostor, klimati za celične laboratorije	7	vse katedre	translacijske raziskave, celični laboratorij	10.0 m ²	10.0 m ²	/
Ko60217	A-00	Skladišče, CL 4 zmrzovalniki, posode s tekočim vodikom	7	vse katedre	translacijske raziskave, celični laboratorij	20.0 m ²	13.0 m ²	/
Ko60218	A-01	Skladišče CL 6, regalno, večje količine materialov in tehtalnica	7	vse katedre	translacijske raziskave, celični laboratorij	20.0 m ²	20.0 m ²	/
Ko60219	A-01	Laboratorij CL 7, GSO, skupna hladna soba	7	vse katedre	translacijske raziskave, celični laboratorij	12.0 m ²	13.0 m ²	/
Ko60220	A-00	Spremljevalna pisarna 1	7	vse katedre	translacijske raziskave, celični laboratorij	12.0 m ²	12.0 m ²	/
Ko60221	A-01	Spremljevalna pisarna 2	7	vse katedre	translacijske raziskave, celični laboratorij	12.0 m ²	13.0 m ²	/
Ko60222	A-01	Spremljevalna pisarna 3	7	vse katedre	translacijske raziskave, celični laboratorij	12.0 m ²	11.0 m ²	/
Ko60223	A-01	Pisarna vodje centra	7	vse katedre	translacijske raziskave, celični laboratorij	20.0 m ²	21.0 m ²	/
L060301	A-00	Laboratorij LMD01, prevzem in evidentiranje bioloških vzorcev naročnika	8	vse katedre	laboratorij za molekularno diagnostiko	5.0 m ²	5.0 m ²	/
L060302	A-00	Laboratorij LMD02, odvzem bioloških materialov	8	vse katedre	laboratorij za molekularno diagnostiko	10.0 m ²	8.0 m ²	/
L060303	A-00	Laboratorij LMD03, mala garderobna soba	8	vse katedre	laboratorij za molekularno diagnostiko	5.0 m ²	8.0 m ²	/
L060304	A-00	Laboratorij LMD04, prostor za izolacijo nukleinskih kislin	8	vse katedre	laboratorij za molekularno diagnostiko	20.0 m ²	20.0 m ²	/
L060305	A-00	Laboratorij LMD5, laboratorij za post PRC analize	8	vse katedre	laboratorij za molekularno diagnostiko	20.0 m ²	20.0 m ²	/
L060306	A-00	Skladišče LMD06, nevarni materiali	8	vse katedre	laboratorij za molekularno diagnostiko	20.0 m ²	19.0 m ²	/
L060307	A-00	Laboratorij LMD07, obdelava rezultatov in pripravo in oddajo izvidov	8	vse katedre	laboratorij za molekularno diagnostiko	10.0 m ²	10.0 m ²	/

06. Area Schedule

L060308	A-00	Laboratorij LMD08, delo z genetskim materialom	8	vse katedre	laboratorij za molekularno diagnostiko	38.0 m ²	36.0 m ²	/
L060309	A-00	Administracija LMD09, prostor za konzilirane sestanke	8	vse katedre	laboratorij za molekularno diagnostiko	20.0 m ²	20.0 m ²	/
L060310	A-00	Kabinet, vodja centra	8	vse katedre	laboratorij za molekularno diagnostiko	20.0 m ²	15.0 m ²	/
L060311	A-00	Spremljevalna pisarna 1	8	vse katedre	laboratorij za molekularno diagnostiko	12.0 m ²	17.0 m ²	/
L060501	A-01	Kabinet, vodja centra za klinične študije	10	vse katedre	klinične študije	10.0 m ²	10.0 m ²	/
L060502	A-01	Skladišče, centralni arhiv	10	vse katedre	klinične študije	8.0 m ²	10.0 m ²	/
L060503	A-01	Skladišče, shranjevanje bioloških vzorcev	10	vse katedre	klinične študije	3.0 m ²	3.0 m ²	/
L060601	A-01	Kabinet, načrtovanje kliničnih študij, izdelavo in obdelavo podatkov	11	vse katedre	kozmetika, razvoj in vrednotenje	12.0 m ²	12.0 m ²	/
L060602	A-01	Laboratorij 01, laboratorijski razvoj in vrednotenje kozmetičnih izdelkov	11	vse katedre	kozmetika, razvoj in vrednotenje	30.0 m ²	31.0 m ²	/
L060603	A-01	Laboratorij 02, klinično vrednotenje kozmetičnih izdelkov	11	vse katedre	kozmetika, razvoj in vrednotenje	30.0 m ²	34.0 m ²	/
L060604	A-01	Čakalnica	11	vse katedre	kozmetika, razvoj in vrednotenje	8.0 m ²	8.0 m ²	/
L060605	A-01	Skladišče, materiali in končni izdelki	11	vse katedre	kozmetika, razvoj in vrednotenje	12.0 m ²	12.0 m ²	/
L060701	A-00	Kabinet, obdelava podatkov	12	vse katedre	analiza zdravil	20.0 m ²	20.0 m ²	/
L060702	A-00	Kabinet, vodja centra, analiza zdravil	12	vse katedre	analiza zdravil	20.0 m ²	20.0 m ²	/
L060703	A-00	Laboratorij, kemijska analiza zdravil	12	vse katedre	analiza zdravil	30.0 m ²	31.0 m ²	/
L060704	A-00	Laboratorij, biofarmacevtska analitika izdelkov	12	vse katedre	analiza zdravil	45.0 m ²	46.0 m ²	/
L060705	A-00	Laboratorij, farmacevtsko-tehnološka analiza	12	vse katedre	analiza zdravil	45.0 m ²	44.0 m ²	/
L060706	A-00	Laboratorij, predaja vzorcev	12	vse katedre	analiza zdravil	4.0 m ²	4.0 m ²	/
L060707	A-00	Garderoba, predprostor laboratorijev	12	vse katedre	analiza zdravil	14.0 m ²	13.0 m ²	/
L060708	A-00	Tehnični prostor, strojnica	12	vse katedre	analiza zdravil	15.0 m ²	16.0 m ²	/
L060709	A-00	Skladišče, klimatske komore	12	vse katedre	analiza zdravil	10.0 m ²	10.0 m ²	/
L060710	A-00	Skladišče, arhiv	12	vse katedre	analiza zdravil	12.0 m ²	12.0 m ²	/
L060711	A-00	Skladišče, arhiv	12	vse katedre	analiza zdravil	10.0 m ²	10.0 m ²	/
K060801	A-01	Garderoba, centralna, 1. letnik	13	vse katedre	garderobe za študente	90.0 m ²	87.0 m ²	/
K060802	A-01	Garderoba, centralna, 2. letnik	13	vse katedre	garderobe za študente	90.0 m ²	87.0 m ²	/
K060803	A-02	Garderoba, centralna, 3. letnik	13	vse katedre	garderobe za študente	90.0 m ²	87.0 m ²	/
K060804	A-02	Garderoba, centralna, 4. letnik	13	vse katedre	garderobe za študente	90.0 m ²	87.0 m ²	/
K060805	A-03	Garderoba, centralna, 5. letnik	13	vse katedre	garderobe za študente	90.0 m ²	87.0 m ²	/
K060901	A-00	Lekarna, univerzitetna učna lekarna in ambulanta	14	vse katedre	Prostori v skupni rabi	210.0 m ²	200.0 m ²	/
K060902	A-00	Laboratorij, XRD	6	vse katedre	Prostori v skupni rabi	20.0 m ²	18.0 m ²	/
K060903	A-00	Laboratorij, SEM	6	vse katedre	Prostori v skupni rabi	20.0 m ²	18.0 m ²	/
L070201	A-01	Neizgotovljen laboratorij 1		vse katedre	Center za nove tehnologije	50.0 m ²	50.0 m ²	/
L070202	A-01	Neizgotovljen laboratorij 2		vse katedre	Center za nove tehnologije	50.0 m ²	50.0 m ²	/
L070203	A-01	Pisarna 1		vse katedre	Center za nove tehnologije	12.0 m ²	12.0 m ²	/
L070204	A-01	Pisarna 2		vse katedre	Center za nove tehnologije	12.0 m ²	12.0 m ²	/
L070205	A-01	Pisarna 3		vse katedre	Center za nove tehnologije	12.0 m ²	12.0 m ²	/
L070206	A-01	Pisarna 4		vse katedre	Center za nove tehnologije	12.0 m ²	12.0 m ²	/
Laboratoriji - skupaj						7,956.0 m²	8,148.0 m²	

06. Area Schedule

K010150	A-04	Kabinet, visokošolski učitelji in predstojniki	Vse katedre	15,0 m ²	15,0 m ²	1
K020101	A-02	Kabinet, asistenti	Vse katedre	15,0 m ²	16,0 m ²	2
K020102	A-02	Kabinet, asistenti	Vse katedre	15,0 m ²	16,0 m ²	2
K020103	A-02	Kabinet, asistenti	Vse katedre	15,0 m ²	20,0 m ²	2
K020104	A-03	Kabinet, asistenti	Vse katedre	15,0 m ²	15,0 m ²	2
K020105	A-03	Kabinet, asistenti	Vse katedre	15,0 m ²	15,0 m ²	2
K020106	A-03	Kabinet, asistenti	Vse katedre	15,0 m ²	15,0 m ²	2
K020107	A-03	Kabinet, asistenti	Vse katedre	15,0 m ²	15,0 m ²	2
K020108	A-03	Kabinet, asistenti	Vse katedre	15,0 m ²	15,0 m ²	2
K020109	A-03	Kabinet, asistenti	Vse katedre	15,0 m ²	15,0 m ²	2
K020110	A-03	Kabinet, asistenti	Vse katedre	15,0 m ²	15,0 m ²	2
K020111	A-03	Kabinet, asistenti	Vse katedre	15,0 m ²	15,0 m ²	2
K020112	A-03	Kabinet, asistenti	Vse katedre	15,0 m ²	15,0 m ²	2
K020113	A-03	Kabinet, asistenti	Vse katedre	15,0 m ²	15,0 m ²	2
K020114	A-03	Kabinet, asistenti	Vse katedre	15,0 m ²	15,0 m ²	2
K020115	A-03	Kabinet, asistenti	Vse katedre	15,0 m ²	15,0 m ²	2
K020116	A-03	Kabinet, asistenti	Vse katedre	15,0 m ²	15,0 m ²	2
K020117	A-04	Kabinet, asistenti	Vse katedre	15,0 m ²	15,0 m ²	2
K020118	A-04	Kabinet, asistenti	Vse katedre	15,0 m ²	14,0 m ²	2
K020119	A-04	Kabinet, asistenti	Vse katedre	15,0 m ²	14,0 m ²	2
K020120	A-04	Kabinet, asistenti	Vse katedre	15,0 m ²	15,0 m ²	2
K020121	A-04	Kabinet, asistenti	Vse katedre	15,0 m ²	15,0 m ²	2
K020122	A-04	Kabinet, asistenti	Vse katedre	15,0 m ²	14,0 m ²	2
K020123	A-04	Kabinet, asistenti	Vse katedre	15,0 m ²	15,0 m ²	2
K020124	A-04	Kabinet, asistenti	Vse katedre	15,0 m ²	15,0 m ²	2
K020125	A-04	Kabinet, asistenti	Vse katedre	15,0 m ²	15,0 m ²	2
K020126	A-04	Kabinet, asistenti	Vse katedre	15,0 m ²	14,0 m ²	2
K020127	A-04	Kabinet, asistenti	Vse katedre	15,0 m ²	15,0 m ²	2
K020128	A-04	Kabinet, asistenti	Vse katedre	15,0 m ²	15,0 m ²	2
K020129	A-04	Kabinet, asistenti	Vse katedre	15,0 m ²	15,0 m ²	2
K020130	A-04	Kabinet, asistenti	Vse katedre	15,0 m ²	15,0 m ²	2
K030101	A-03	Kabinet, mladi raziskovalci in raziskovalci	Vse katedre	25,0 m ²	25,0 m ²	4
K030102	A-03	Kabinet, mladi raziskovalci in raziskovalci	Vse katedre	25,0 m ²	25,0 m ²	4
K030103	A-03	Kabinet, mladi raziskovalci in raziskovalci	Vse katedre	25,0 m ²	25,0 m ²	4
K030104	A-03	Kabinet, mladi raziskovalci in raziskovalci	Vse katedre	25,0 m ²	25,0 m ²	4
K030105	A-03	Kabinet, mladi raziskovalci in raziskovalci	Vse katedre	25,0 m ²	26,0 m ²	4
K030106	A-03	Kabinet, mladi raziskovalci in raziskovalci	Vse katedre	25,0 m ²	26,0 m ²	4
K030107	A-03	Kabinet, mladi raziskovalci in raziskovalci	Vse katedre	25,0 m ²	25,0 m ²	4
K030108	A-03	Kabinet, mladi raziskovalci in raziskovalci	Vse katedre	25,0 m ²	25,0 m ²	4
K030109	A-03	Kabinet, mladi raziskovalci in raziskovalci	Vse katedre	25,0 m ²	25,0 m ²	4
K030110	A-03	Kabinet, mladi raziskovalci in raziskovalci	Vse katedre	25,0 m ²	25,0 m ²	4

06. Area Schedule

K040101	A-02	Kabinet, tajništvo katedre	Vse katedre	12,5 m ²	12,0 m ²	1
K040102	A-03	Kabinet, tajništvo katedre	Vse katedre	12,5 m ²	15,0 m ²	1
K040103	A-03	Kabinet, tajništvo katedre	Vse katedre	12,5 m ²	22,0 m ²	1
K040104	A-04	Kabinet, tajništvo katedre	Vse katedre	12,5 m ²	15,0 m ²	1
K040105	A-04	Kabinet, tajništvo katedre	Vse katedre	12,5 m ²	15,0 m ²	1
K040106	A-04	Kabinet, tajništvo katedre	Vse katedre	12,5 m ²	15,0 m ²	1
K050101	A-03	Sejna soba, pregradna	Vse katedre	60,0 m ²	61,0 m ²	12+12
K050102	A-04	Sejna soba, pregradna	Vse katedre	60,0 m ²	67,0 m ²	12+12
K050103	A-04	Sejna soba, pregradna	Vse katedre	60,0 m ²	62,0 m ²	12+12
K050104	A-04	Sejna soba, pregradna	Vse katedre	60,0 m ²	62,0 m ²	12+12
K050105	A-02	Sejna soba, pregradna	Vse katedre		27,0 m ²	
K060101	A-02-03-04	Čajna kuhinja (več prostorov)	Vse katedre	36,0 m ²	47,0 m ²	/
K060102	A-04	Klubska soba, akademski klub	Vse katedre	60,0 m ²	106,0 m ²	/
K060103	A-03-04	Terasa z dostopom za zaposlene (zunanji prostor)	Vse katedre	40,0 m ²	40,0 m ²	/
K070101	A-02	Soba za fotokopiranje in tiskanje	Vse katedre	7,0 m ²	5,0 m ²	/
K070102	A-03	Soba za fotokopiranje in tiskanje	Vse katedre	7,0 m ²	5,0 m ²	/
K070103	A-03	Soba za fotokopiranje in tiskanje	Vse katedre	7,0 m ²	5,0 m ²	/
K070104	A-04	Soba za fotokopiranje in tiskanje	Vse katedre	7,0 m ²	6,0 m ²	/
K070105	A-04	Soba za fotokopiranje in tiskanje	Vse katedre	7,0 m ²	6,0 m ²	/
K070106	A-04	Soba za fotokopiranje in tiskanje	Vse katedre	7,0 m ²	12,0 m ²	/
K070107	A-02	Prirocno skladišče	Vse katedre		5,0 m ²	
Pedagoški prostori - skupaj				1,943.0 m²	2,096.0 m²	

skupina prostorov

Skupni prostori

šifra prostora v risbi	objekt, etaža	ime prostora	katedra	laboratorij	izhodiščna površina	površina v idejni zasnovi	število uporabnikov
S010101	B-03	Pisarna, vnos bibliografije	Vse katedre	Vsi laboratoriji	25,0 m ²	24,0 m ²	2
S010102	B-03	Knjižnica, prost pristop za izposajo knjig	Vse katedre	Vsi laboratoriji	150,0 m ²	264,0 m ²	/
S010103	B-03	Knjižnica, čitalnica	Vse katedre	Vsi laboratoriji	105,0 m ²		30
S010104	B-03	Knjižnica, študentska računalniška soba	Vse katedre	Vsi laboratoriji	48,0 m ²	48,0 m ²	30
S010105	B-03	Skupni prostor, kopimica	Vse katedre	Vsi laboratoriji	25,0 m ²	26,0 m ²	/
S010106	B-03	Skladišče, depo za knjige, kataloge, referenčno gradivo	Vse katedre	Vsi laboratoriji	250,0 m ²	254,0 m ²	/
S020101	B	Skupni prostor, študentska soba	Vse katedre	Vsi laboratoriji	60,0 m ²	m ² vključen znotraj skupnih	/
S020102	B-00	Skupni prostor, razdelilna kuhinja	Vse katedre	Vsi laboratoriji	100,0 m ²	111,0 m ²	/
S020103	B-00	Skupni prostor, jedilnica	Vse katedre	Vsi laboratoriji	150,0 m ²	171,0 m ²	/
S020104	A-B	Skupni prostor, prostori za druženje (več prostorov)	Vse katedre	Vsi laboratoriji	200,0 m ²	464,0 m ²	/
Skupni prostori - skupaj					1,113.0 m²	1,362.0 m²	

06. Area Schedule

skupina prostorov

Pedagoški prostori

šifra prostora v risbi	objekt, etaž	ime prostora	katedra	laboratorij	izhodiščna površina	površina v natečajni zasnovi	število uporabnikov	Opomba
P010101	B-00	Velika amfiteatralna predavalnica 1		Vse katedre	240.0 m ²	239.0 m ²	180	
P010102	B-02	Velika amfiteatralna predavalnica 2		Vse katedre	240.0 m ²	239.0 m ²	180	
P010103	B-00-01	Mala amfiteatralna predavalnica 1		Vse katedre	120.0 m ²	136.0 m ²	80	Vključuje AV sobo
P010104	B00-01	Mala amfiteatralna predavalnica 2		Vse katedre	120.0 m ²	136.0 m ²	80	
P010105	B00-01	Mala amfiteatralna predavalnica 3		Vse katedre	120.0 m ²	136.0 m ²	80	
P010106	B00-01	Mala amfiteatralna predavalnica 4		Vse katedre	120.0 m ²	136.0 m ²	80	
P010107	B-00-02	Skladišče - AV oprema (več prostorov)		Vse katedre	20.0 m ²	8.0 m ²	/	
P020101	B-02	Splošna učilnica		Vse katedre	80.0 m ²	83.0 m ²	50	
P020102	B-02	Splošna učilnica		Vse katedre	80.0 m ²	83.0 m ²	50	
P020103	B-02	Splošna učilnica		Vse katedre	80.0 m ²	83.0 m ²	50	
P020104	B-02	Splošna učilnica		Vse katedre	80.0 m ²	86.0 m ²	50	
P020105	B-02	Splošna učilnica		Vse katedre	80.0 m ²	83.0 m ²	50	
P020106	B-02	Splošna učilnica		Vse katedre	80.0 m ²	83.0 m ²	50	
P020107	B-02	Splošna učilnica		Vse katedre	80.0 m ²	83.0 m ²	50	
P020108	B-02	Splošna učilnica		Vse katedre	80.0 m ²	86.0 m ²	50	
P020109	B-02	Splošna učilnica		Vse katedre	80.0 m ²	82.0 m ²	50	
P030101	B-02	Mala predavalnica		Vse katedre	54.0 m ²	60.0 m ²	30	
P030102	B-02	Mala predavalnica		Vse katedre	54.0 m ²	60.0 m ²	30	
P030103	B-03	Mala predavalnica		Vse katedre	54.0 m ²	61.0 m ²	30	
P030104	B-03	Mala računalniška učilnica		Vse katedre	54.0 m ²	56.0 m ²	20	
P030105	B-03	Mala računalniška učilnica		Vse katedre	54.0 m ²	56.0 m ²	20	
P030106	B-03	Mala računalniška učilnica		Vse katedre	54.0 m ²	56.0 m ²	20	
Pedagoški prostori - skupaj					2,024.0 m²	2,131.0 m²		

06. Area Schedule

skupina prostorov							
Uprava							
šifra prostora v risbi	objekt, etaža	ime prostora	oddelek	študijska smer	izhodiščna površina	površina v idejni zasnovi	število uporabnikov
U010101	B-01	Pisarna, tajništvo + vložišče	1	Vse smeri	30.0 m ²	58.0 m ²	
U010102	B-01	Pisarna, dekan	1	Vse smeri	40.0 m ²	39.0 m ²	
U010103	B-01	Pisarna, tajnik	1	Vse smeri	25.0 m ²	25.0 m ²	
U010104	B-01	Pisarna, prodekan	1	Vse smeri	17.5 m ²	22.0 m ²	
U010105	B-01	Pisarna, prodekan	1	Vse smeri	17.5 m ²	22.0 m ²	
U010106	B-01	Pisarna, prodekan	1	Vse smeri	17.5 m ²	20.0 m ²	
U010107	B-01	Sejna soba, velika - senatna	1	Vse smeri	70.0 m ²	76.0 m ²	
U010108	B-01	Čajna kuhinja	1	Vse smeri	6.0 m ²	9.0 m ²	
U010109	B-01	Čajna kuhinja	1	Vse smeri	6.0 m ²	8.0 m ²	
U030101	B-01	Pisarna, KS (kadrovska služba) - vodja	3	Vse smeri	17.5 m ²	17.0 m ²	
U030102	B-01	Pisarna, KS referenti	3	Vse smeri	25.0 m ²	25.0 m ²	
U030103	B-01	Pisarna, FRS (finančno računovodska služba) - vodja	3	Vse smeri	17.5 m ²	20.0 m ²	
U030104	B-01	Pisarna, FRS referenti	3	Vse smeri	25.0 m ²	25.0 m ²	
U030105	B-01	Pisarna, FRS referenti	3	Vse smeri	25.0 m ²	25.0 m ²	
U030106	B-01	Pisarna, FRS referenti	3	Vse smeri	25.0 m ²	27.0 m ²	
U030107	B-01	Tehnicni prostor uprave		Vse smeri	17.5 m ²	15.0 m ²	
U030108	B-01	Arhiv, FRS		Vse smeri	12.5 m ²	9.0 m ²	
U040101	B-00	Pisarna, ŠR (študentski referat) - vodja	4	Vse smeri	17.5 m ²		
U040102	B-00	Pisarna, ŠR - sodelavci	4	Vse smeri	17.5 m ²		
U040103	B-00	Pisarna, ŠR - sodelavci	4	Vse smeri	17.5 m ²		
U040104	B-00	Pisarna, ŠR - sodelavci	4	Vse smeri	17.5 m ²		
U040104	B-00	Pisarna, ŠR - sodelavci + vložišče	4	Vse smeri	17.5 m ²		
U040104	B-00	Čakalnica	4	Vse smeri	15.0 m ²		
U050101	B-00	Soba za zagovore diplomskih del	5	Vse smeri	40.0 m ²	39.0 m ²	
U050102	B-00	Soba komisije	5	Vse smeri	17.5 m ²	22.0 m ²	
U050103	B-00	Soba za pogostitev	5	Vse smeri	30.0 m ²	38.0 m ²	
Uprava - skupaj					584.5 m²	664.0 m²	

06. Area Schedule

skupina prostorov

Tehnične službe in Servisni prostori

šifra prostora v risbi	objekt, etaža	ime prostora	katedra	laboratorij	izhodiščna površina	površina v idejni zasnovi	število uporabnikov
T010101	A-03	Pisarna, SI (služba za informatiko)	Vse katedre	Vsi laboratoriji	17,5 m ²	30,0 m ²	1
T010102	A-03	Prostor za serverje FFA, SI	Vse katedre	Vsi laboratoriji	30,0 m ²	38,0 m ²	1
T020101	A-01	Pisarna, TS (tehnična služba)	Vse katedre	Vsi laboratoriji	30,0 m ²	30,0 m ²	1
T020102	B-00	Mehanična delavnica, TS in SI	Vse katedre	Vsi laboratoriji	30,0 m ²	30,0 m ²	4
T020103	B-00	Skладиšče, stroji za vzdrževalna dela	Vse katedre	Vsi laboratoriji	30,0 m ²	30,0 m ²	/
T020104	B-00	Prostor za čistilke	Vse katedre	Vsi laboratoriji	17,5 m ²	21,0 m ²	/
T020105	A-B	Recepcija	Vse katedre	Vsi laboratoriji	15,0 m ²	m2 vključen znotraj komunikacij	1
T030101	K-01	Skладиšče 1, skupni arhiv	Vse katedre	Vsi laboratoriji	60,0 m ²	70,0 m ²	/
T030102	A-00	Skладиšče 2, kemikalije in topila (zamrzovalnik, hladna soba)	Vse katedre	Vsi laboratoriji	30,0 m ²	30,0 m ²	/
T030103	A-00	Skладиšče 3, potrošni material	Vse katedre	Vsi laboratoriji	30,0 m ²	30,0 m ²	/
T030104	A-00	Skладиšče 4, večnamenski skladiščni prostor	Vse katedre	Vsi laboratoriji	30,0 m ²	30,0 m ²	/
T030105	A-00	Skладиšče 5, depo za odpadna topila	Vse katedre	Vsi laboratoriji	25,0 m ²	26,0 m ²	/
T030106	A-00	Skладиšče 6, depo za infektivne odpadke	Vse katedre	Vsi laboratoriji	17,0 m ²	19,0 m ²	/
T030107	K-01	Skладиšče 7, prostor za back-up serverje	Vse katedre	Vsi laboratoriji	30,0 m ²	39,0 m ²	/
T040101	A,B	Servisni prostor, Sanitarije študentov	Vse katedre	Vsi laboratoriji	120,0 m ²	297,0 m ²	1200
T040102	A,B	Servisni prostor, Sanitarije pedagogov	Vse katedre	Vsi laboratoriji	50,0 m ²	/	110
T040103	A,B	Servisni prostor, Čistila (več prostorov, 5m2 / etažo)	Vse katedre	Vsi laboratoriji	20,0 m ²	26,0 m ²	/
T050101	A,B-04	Tehnični prostor, agregati in klimati	Vse katedre	Vsi laboratoriji	900,0 m ²	873,0 m ²	/
T050102	K-01	Prostor za centralni razvod tehničnih plinov	Vse katedre	Vsi laboratoriji	50,0 m ²	50,0 m ²	/
T050103	K-01	Kompresorska postaja za pripravo in razvod komprimiranega zraka	Vse katedre	Vsi laboratoriji	25,0 m ²	33,0 m ²	/
T050104	K-01	Kompresorska postaja za pripravo in razvod komprimiranega zraka	Vse katedre	Vsi laboratoriji	25,0 m ²	34,0 m ²	/
T050105	K-01	Kotlovnica	Vse katedre	Vsi laboratoriji	50,0 m ²	66,0 m ²	/
T050106	C-00	Trafo postaja z dizel agregatom	Vse katedre	Vsi laboratoriji	50,0 m ²	60,0 m ²	/
T050107	C-00	Ekološki otok	Vse katedre	Vsi laboratoriji	50,0 m ²	50,0 m ²	/
T050108	K-01	Prostor s toplotno postajo za pripravo hladilnega in ogrevalnega medija	Vse katedre	Vsi laboratoriji	70,0 m ²	71,0 m ²	/
T050109	K-01	Šprinkler strojnica	Vse katedre	Vsi laboratoriji	100,0 m ²	72,0 m ²	/
T050110	K-01	Prostor za pripravo demi vode	Vse katedre	Vsi laboratoriji	25,0 m ²	35,0 m ²	/
T050111	K-01	Prostor za pripravo demi vode	Vse katedre	Vsi laboratoriji	25,0 m ²	37,0 m ²	/
T050112	K-01	Skладиšce	Vse katedre	Vsi laboratoriji		147,0 m ²	/
Servis - skupaj					1,952,0 m²	2,274,0 m²	
T050101	A,B	Komunikacije (hodniki, stopnišča)	Vse katedre	Vsi laboratoriji	3,500,0 m ²	5,715,0 m ²	
T050102	K-01	Parkirna mesta z vozno potjo	Vse katedre	Vsi laboratoriji	0,0 m ²	6,609,0 m ²	
Servis - skupaj					5,452,0 m²	14,598,0 m²	

07. Visualisation



07. Visualisation



07 Visualisation



07. Visualisation



o8. Contract Fees

FFA:

Fee for architectural services for all stages including interior design and project management:

2,389,696 Eur without VAT

(Note: no VAT for international architectural services)

Uvoz v garažo:

Architectural services for all stages including interior design and project management:

85,560 Eur without VAT

09. Investment evaluation

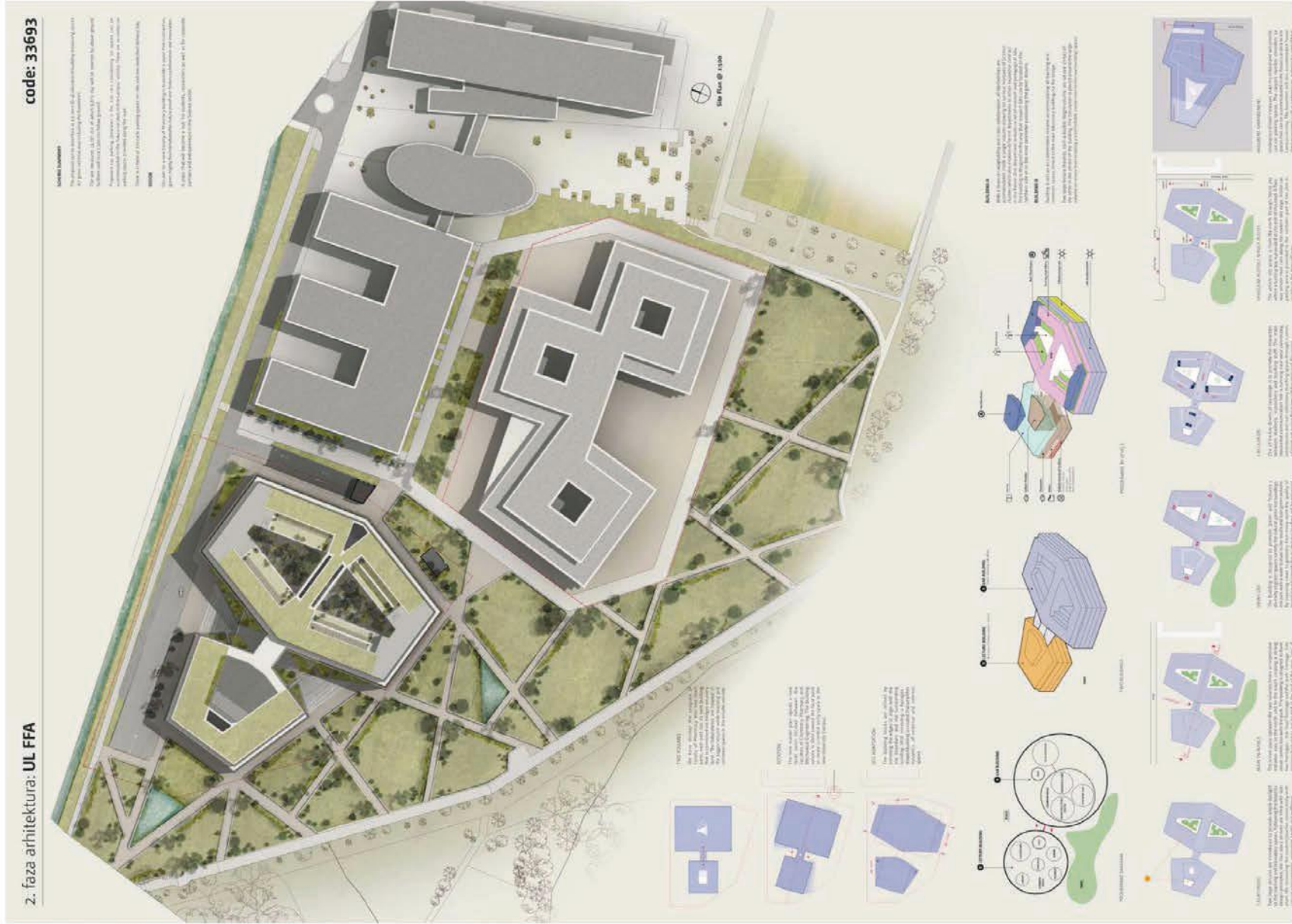
We have prepared the following preliminary estimate for the cost of the Building:

47,972,000 Eur

We would note that this cost is based on the following:

- Limited design information
- Costs are current Q3 2019;
- Excludes inflation, site acquisition costs, legal fees and external site works and utility connections;
- Includes an allowance of €2,000,000 for specialist equipment and other furniture, fittings and equipment.

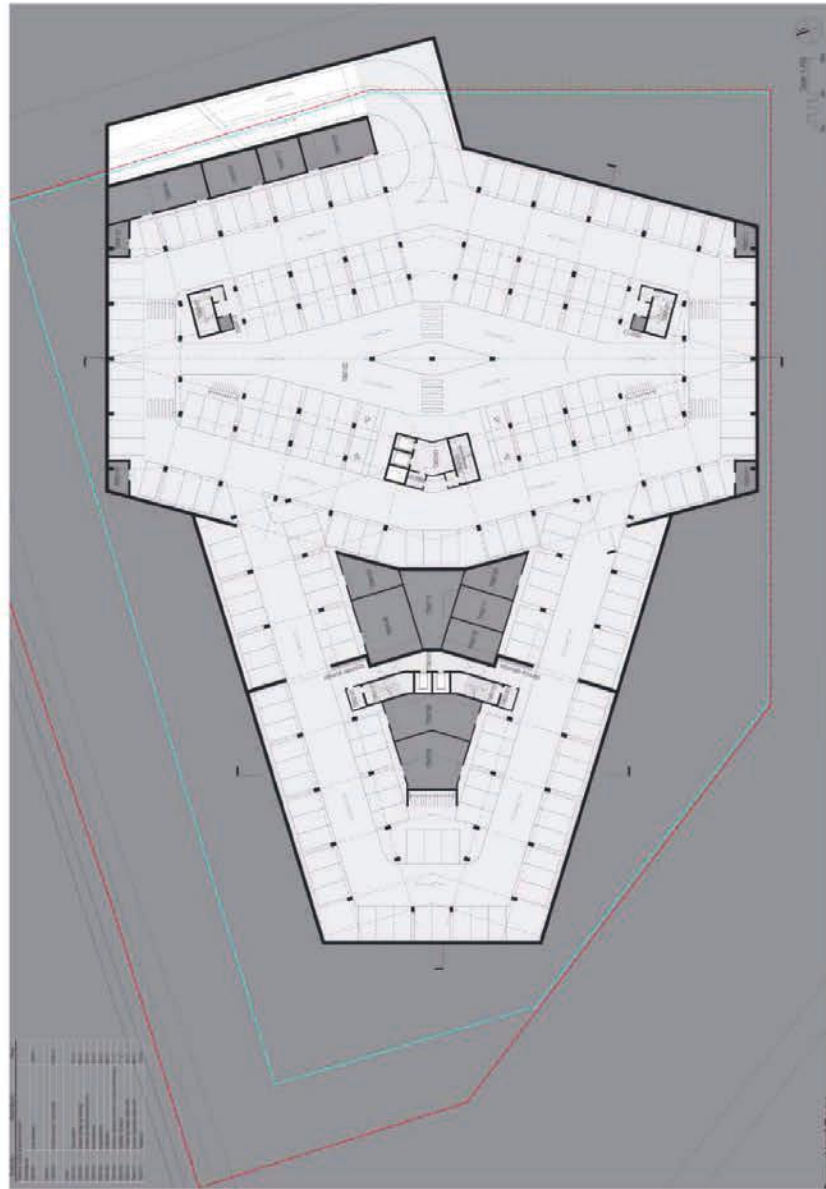
10. Presentation Boards



10. Presentation Boards

code: 33693

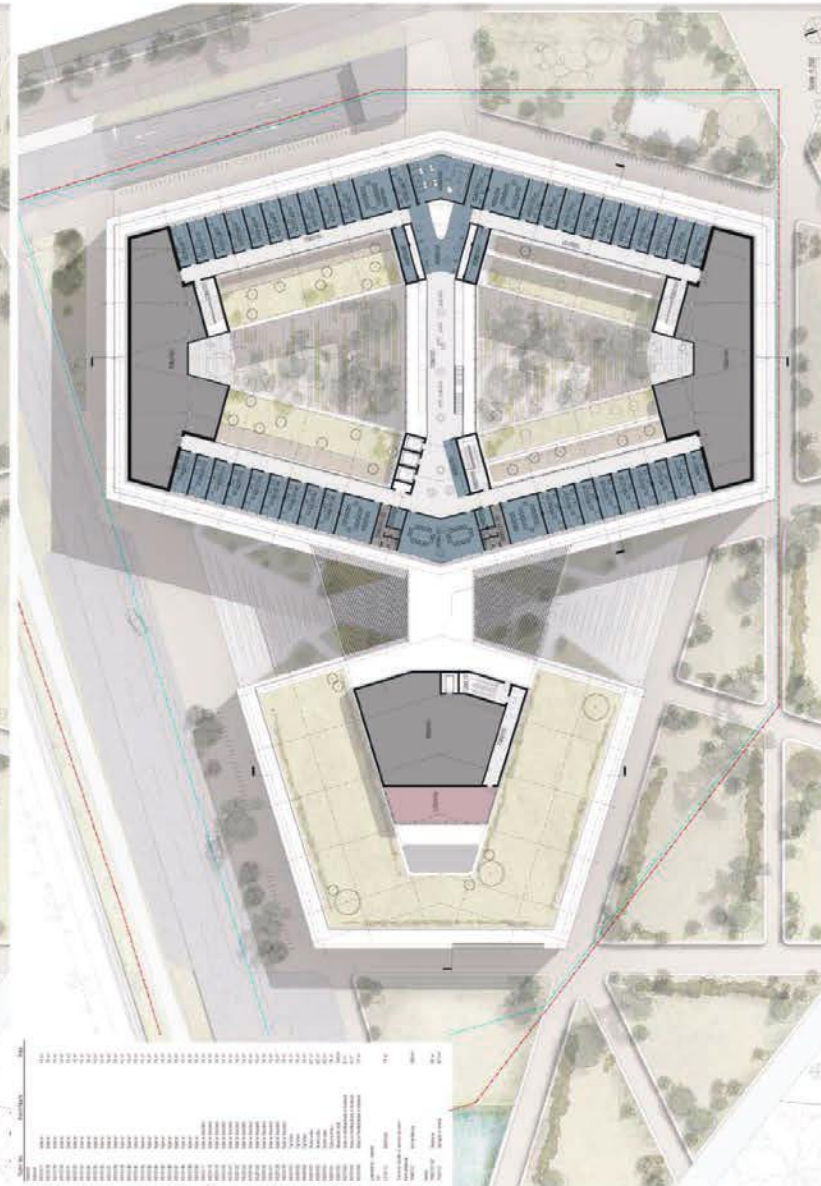
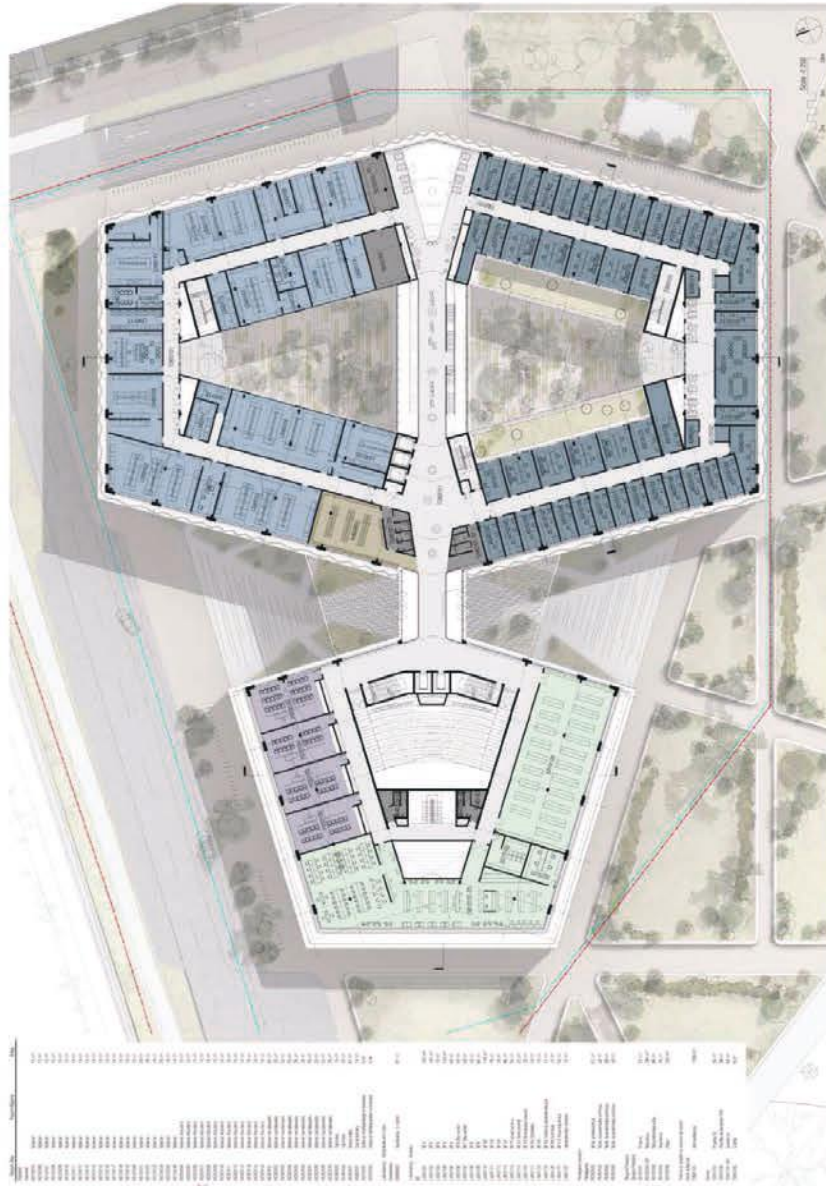
2. faza arhitektura: UL FFA



10. Presentation Boards

code: 33693

2. faza arhitektura: UL FFA



10. Presentation Boards

2. faza arhitektura: UL FFA

code: 33693

