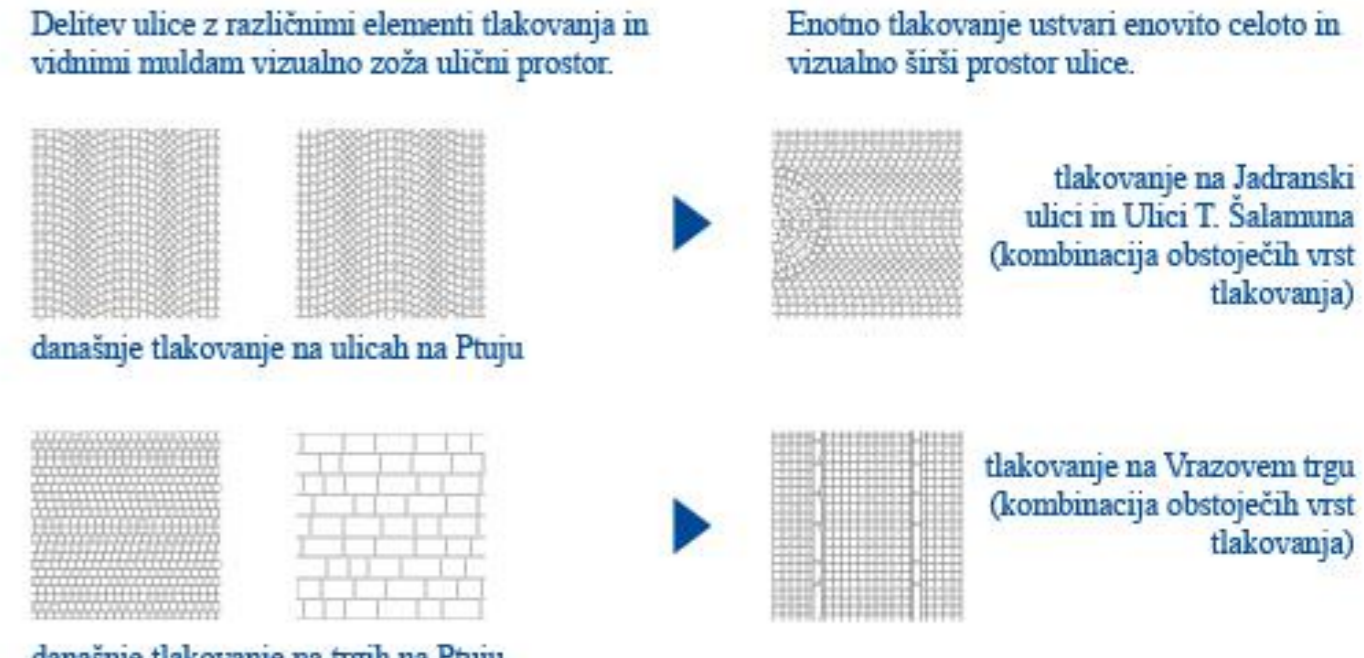
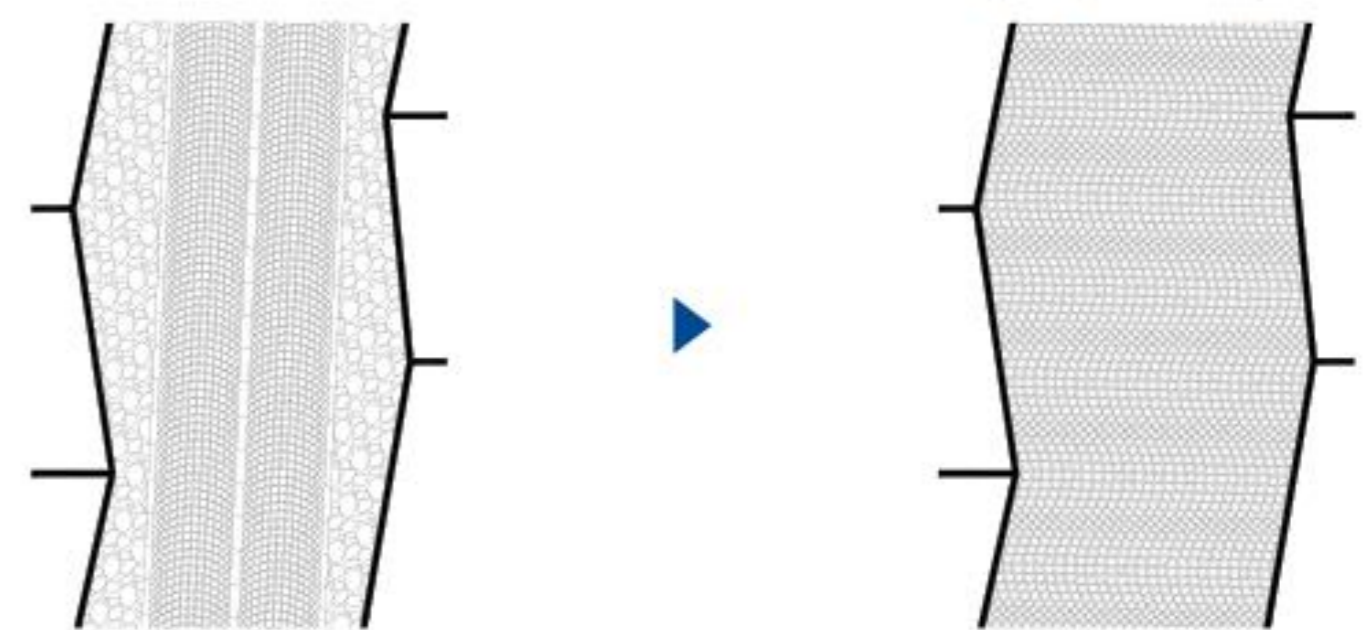
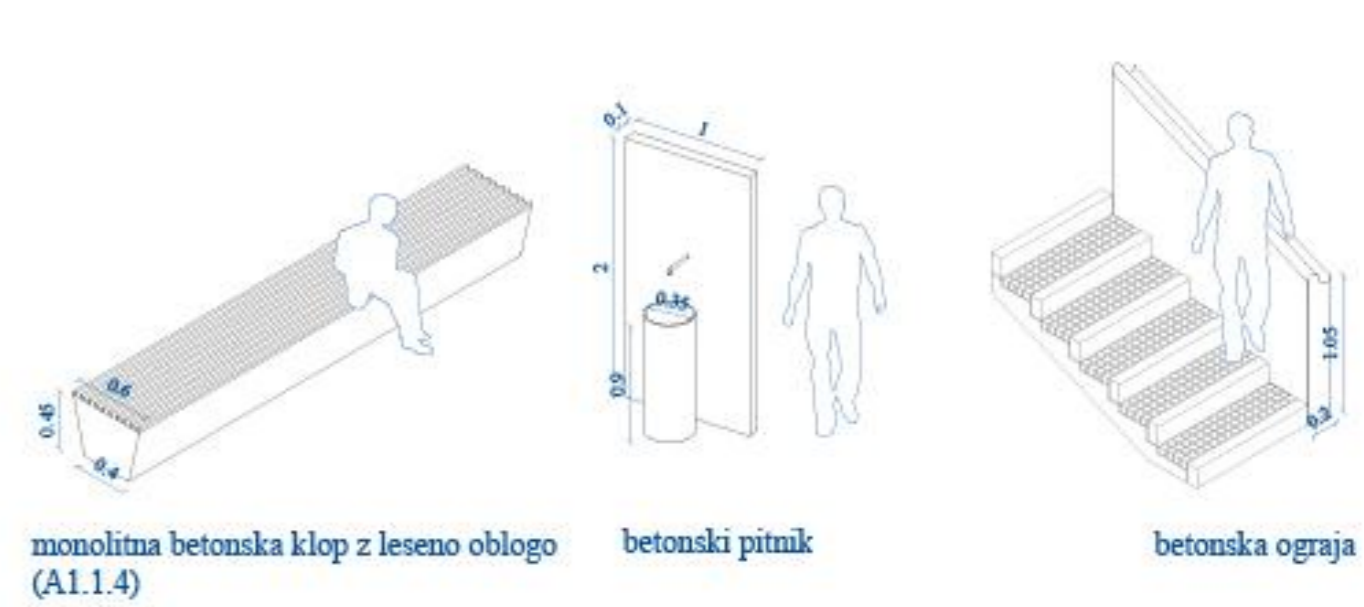


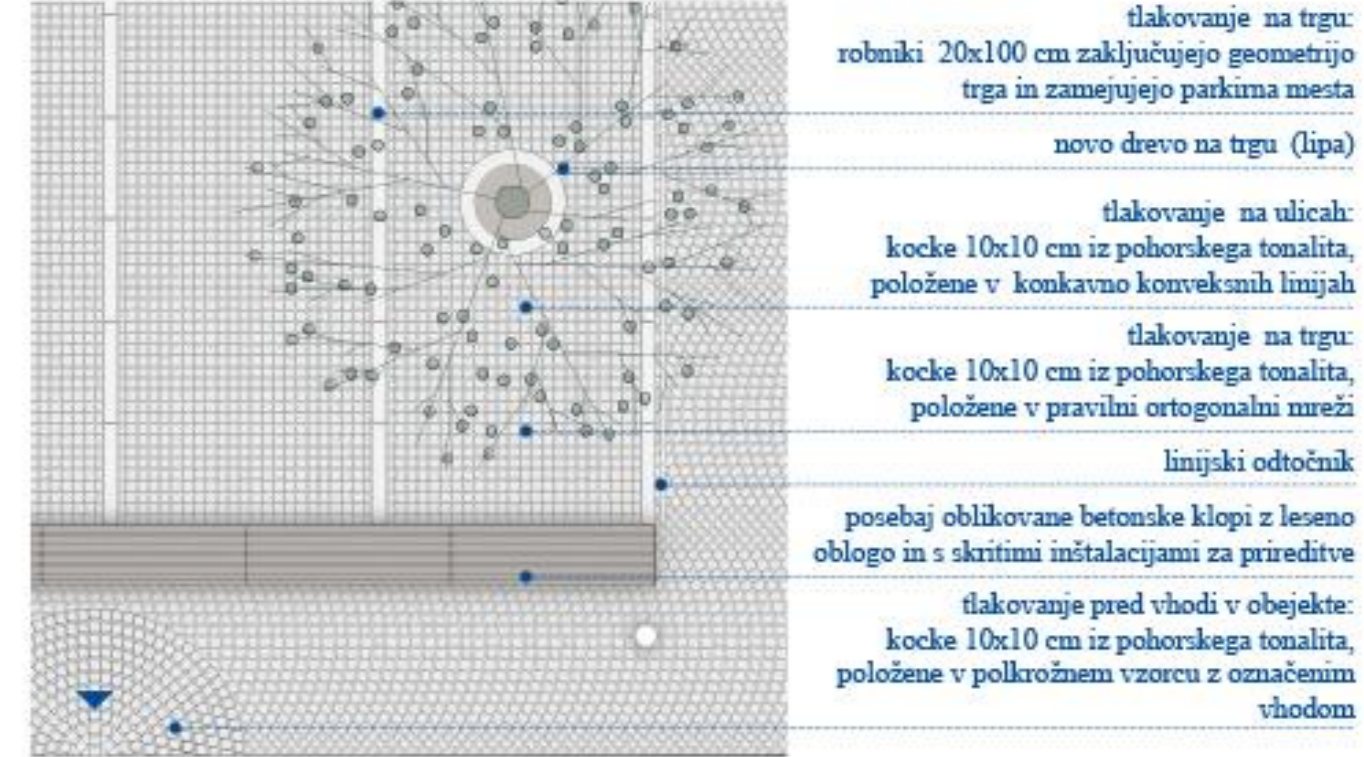
princip tlakovanja ulic



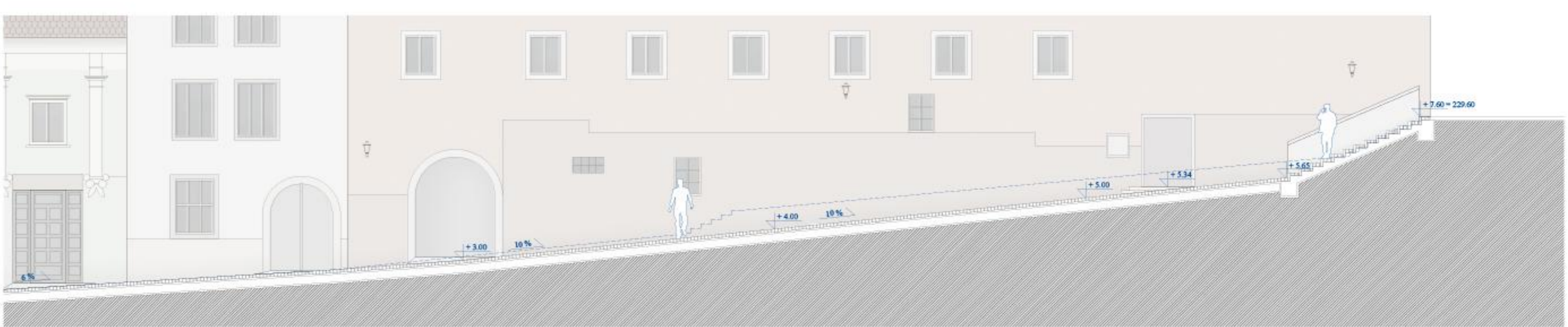
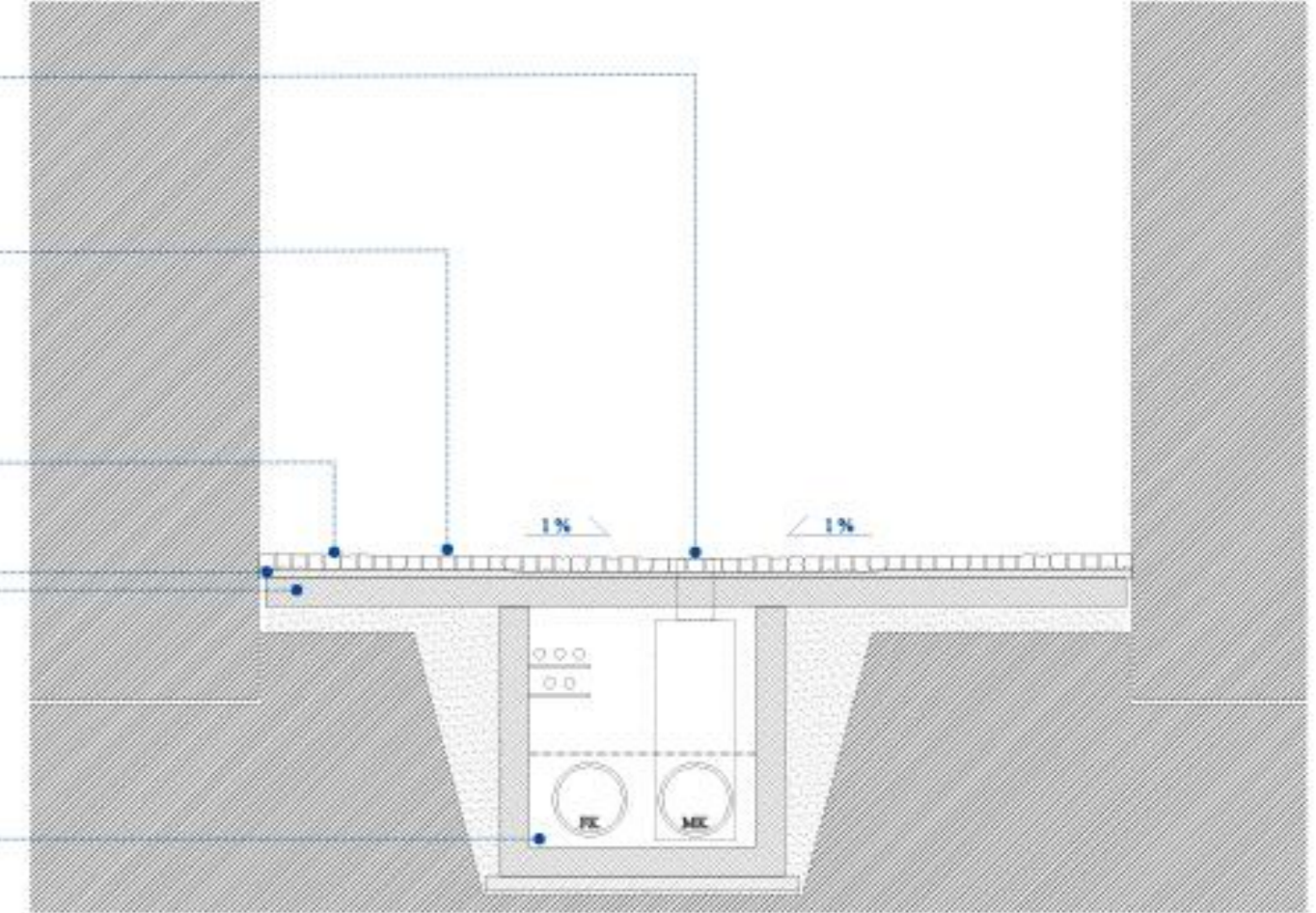
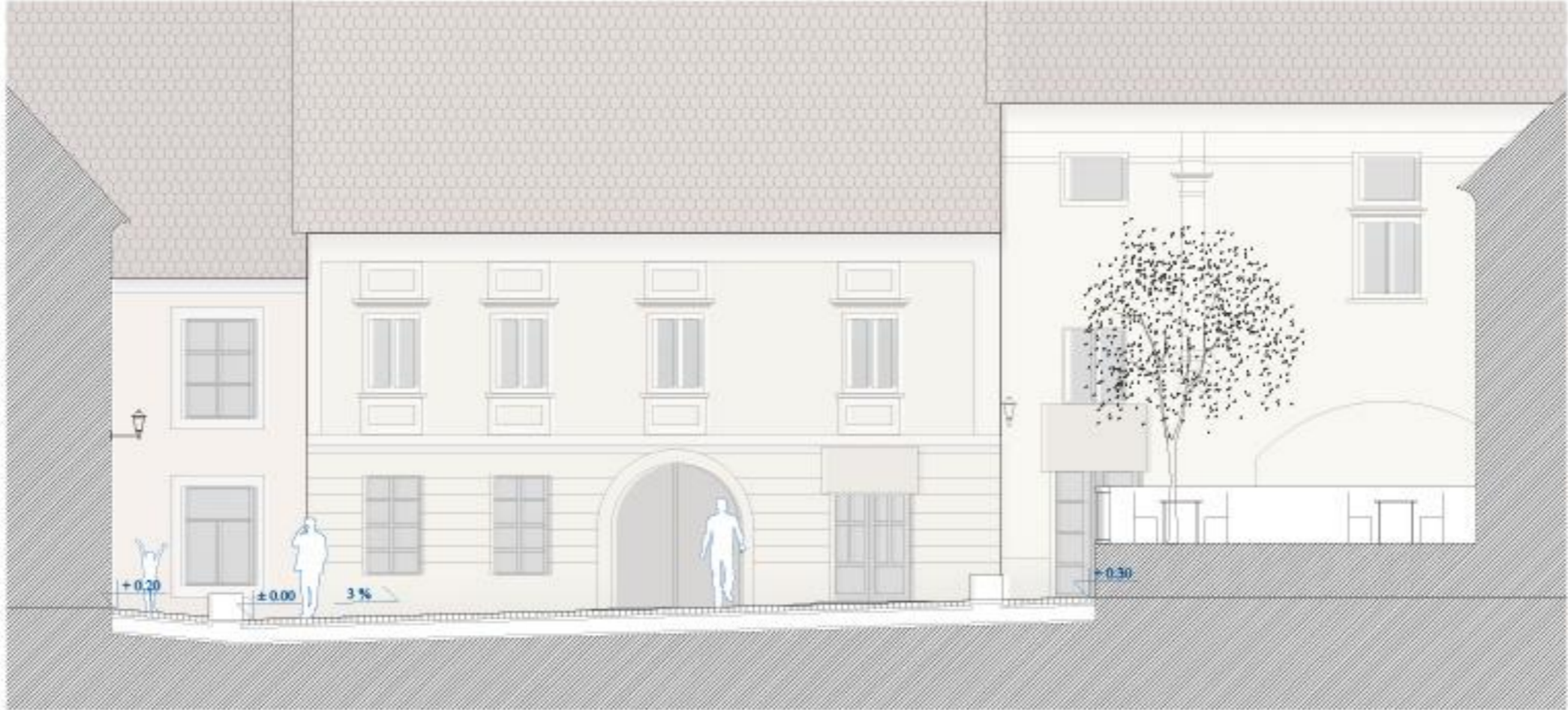
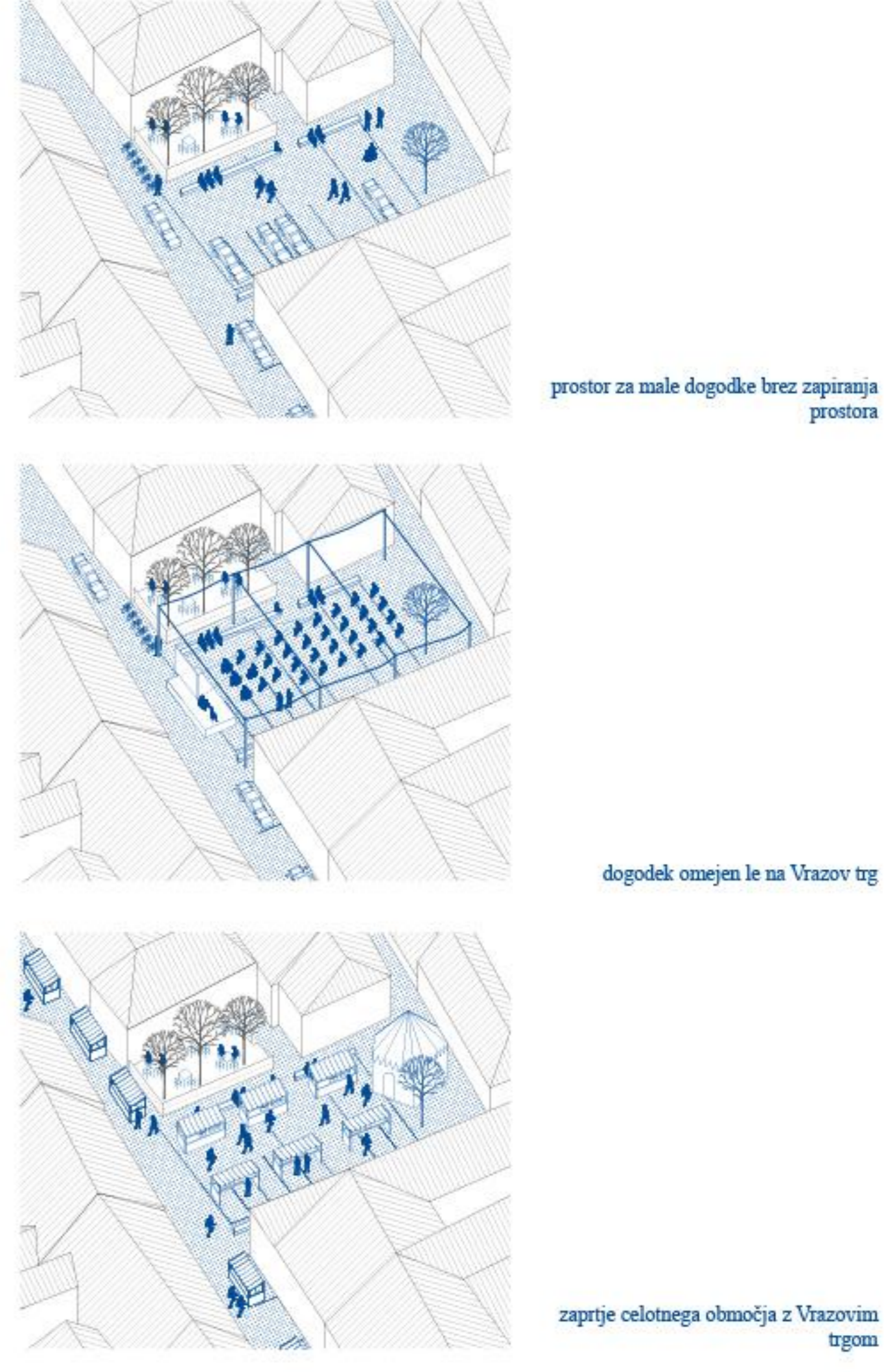
sheme novo oblikovane opreme

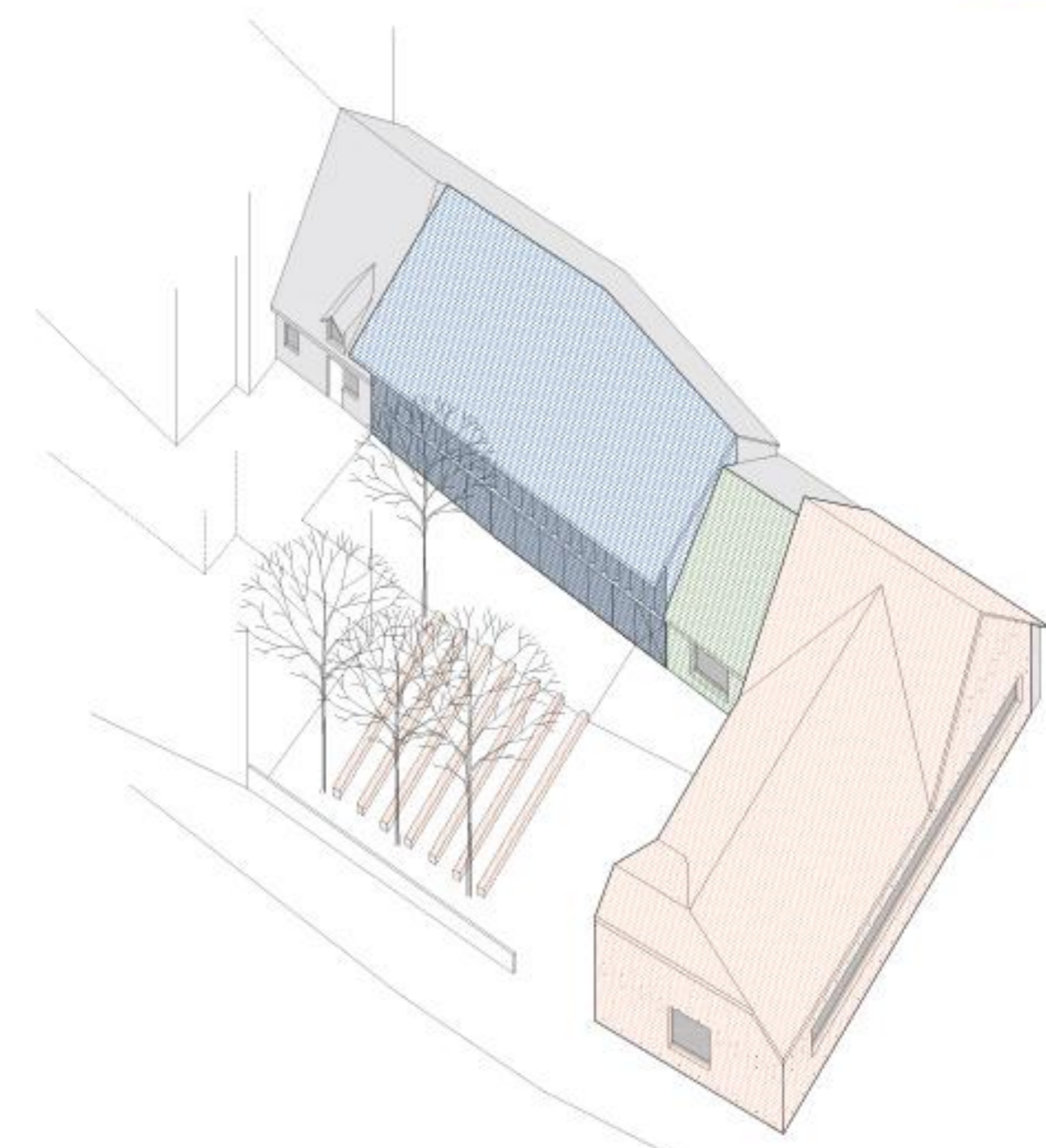
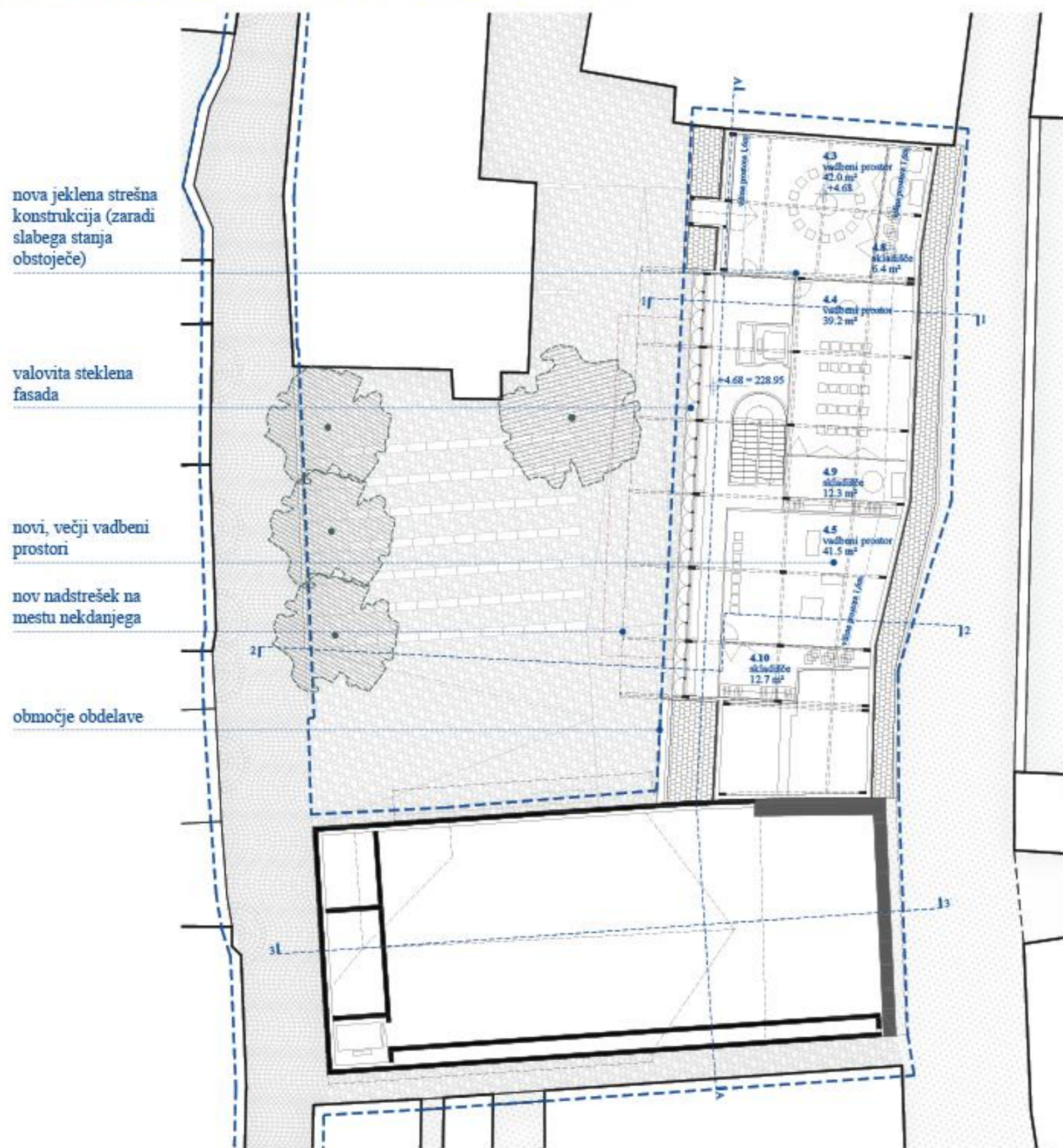


prikaz tlaka na Vrazovem trgu

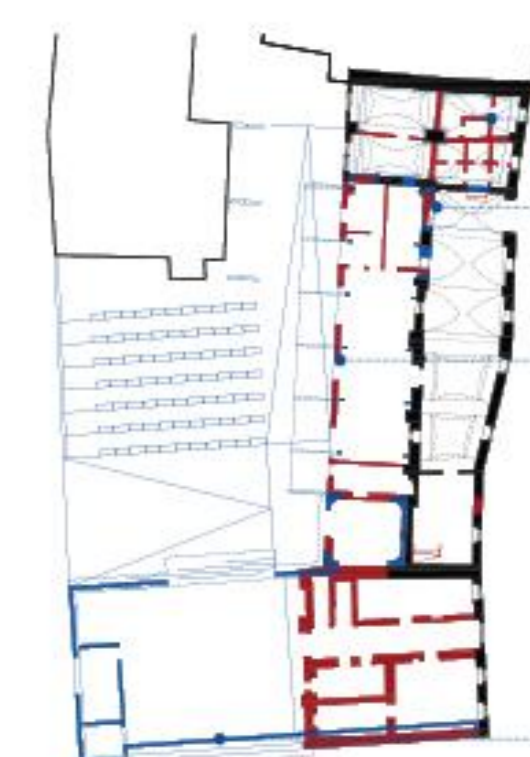
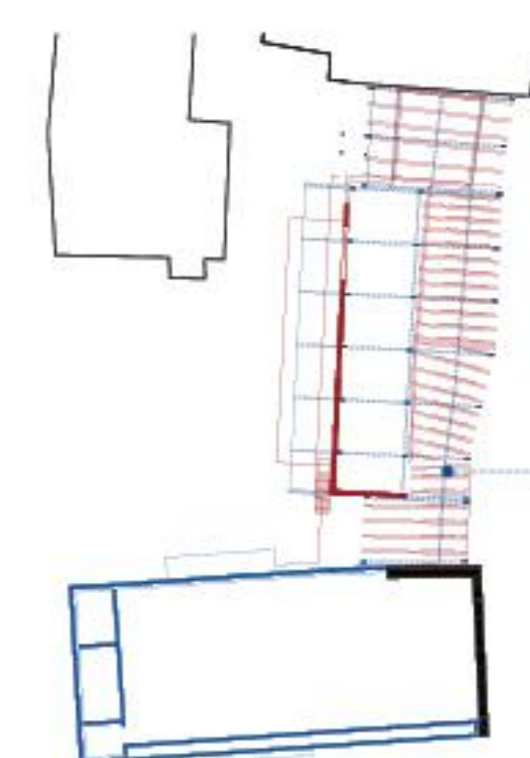


sheme prireditve na Vrazovem trgu





ohranjena podoba zgodovinsko raščenega kareja



LEGENDA obstoječe rušitve novogradnja shema posegov m 1:500



- podbetoniranje obstoječih zidov omogoči znižanje kote tlaka (univerzalna dostopnost)
- vhod iz Aškrčeve ulice
- lišno drevo
- lahka jeklena konstrukcija - nekdanji objekt delavnic
- predlog 'avditorij'
- svetlobnk za kletne prostore
- betonska konstrukcija - nekdanji industrijski objekt
- odpiranje odra na dvorišče
- stranski vhod v dvorano - obnovljen nekdanji vhod
- svetlobnk za kletne prostore

- dograditev kleti v delu, kjer je možna nadomestna gradnja
- nov preboj
- vrata odprtna postavljena v os pod okno
- sprememba vhoda v klet objekta D

