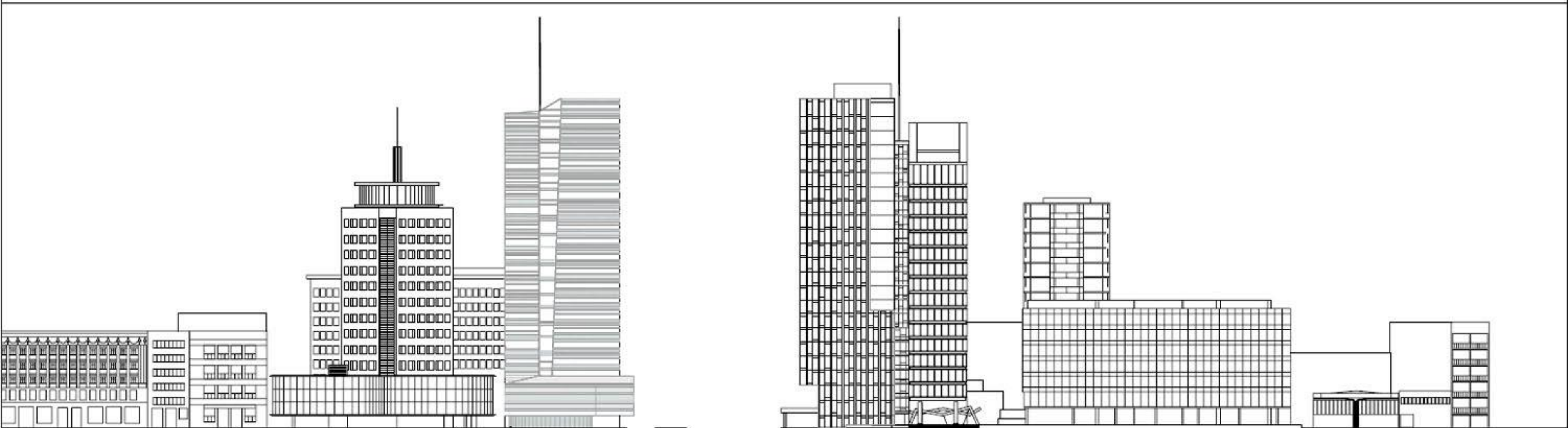
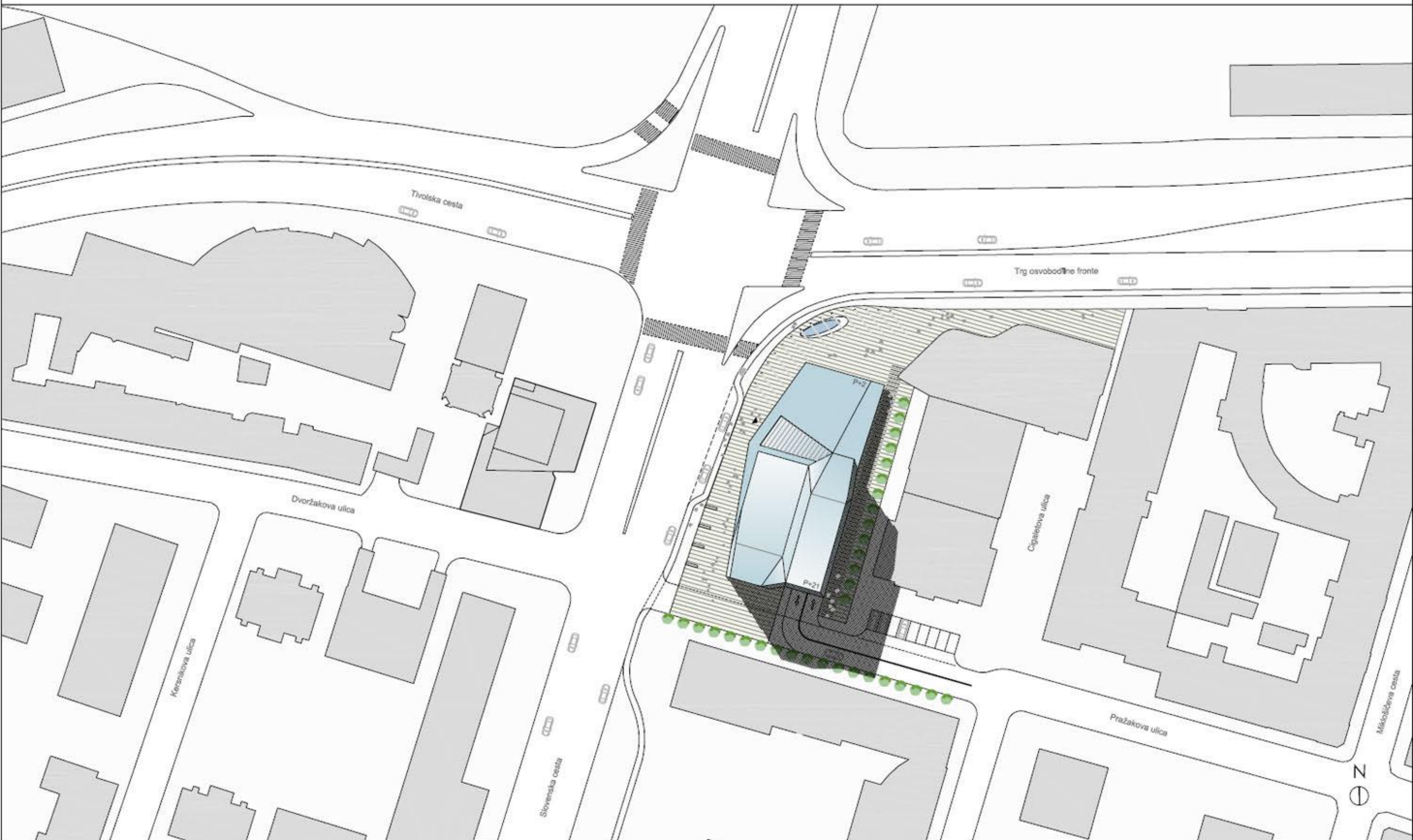




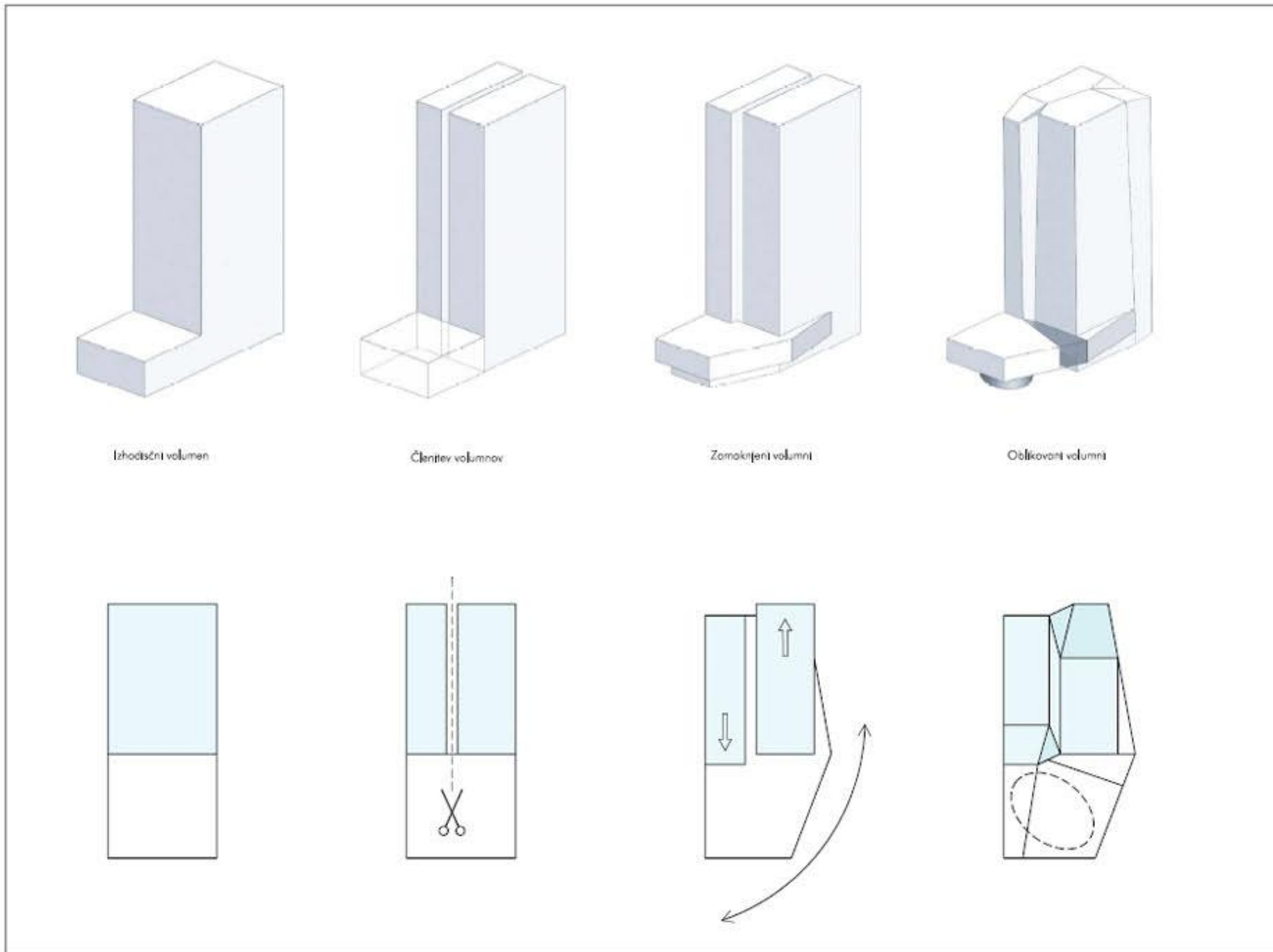
Perspektivna pogleda na severna mestna vrata



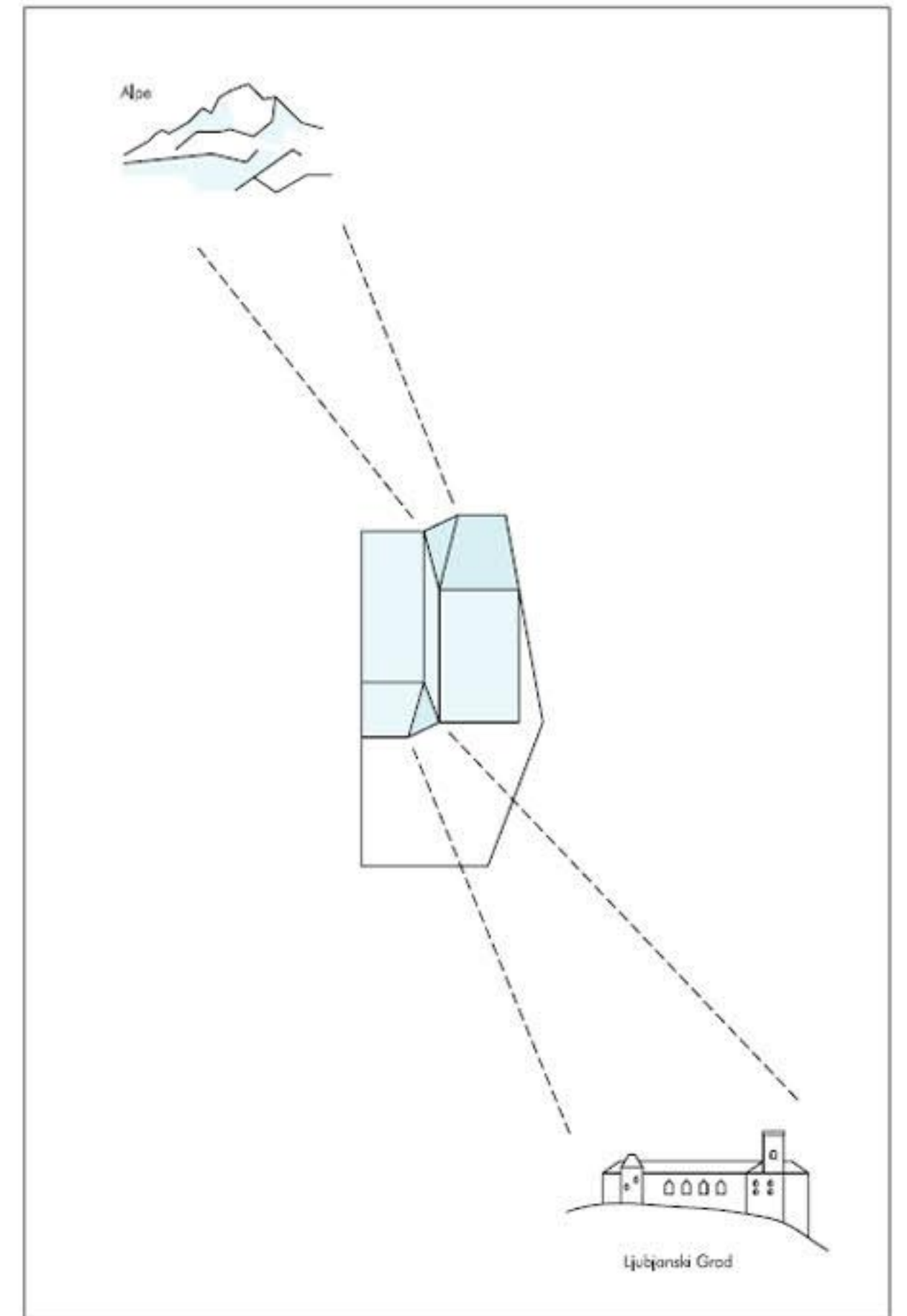
Severna mestna vrata M 1:500



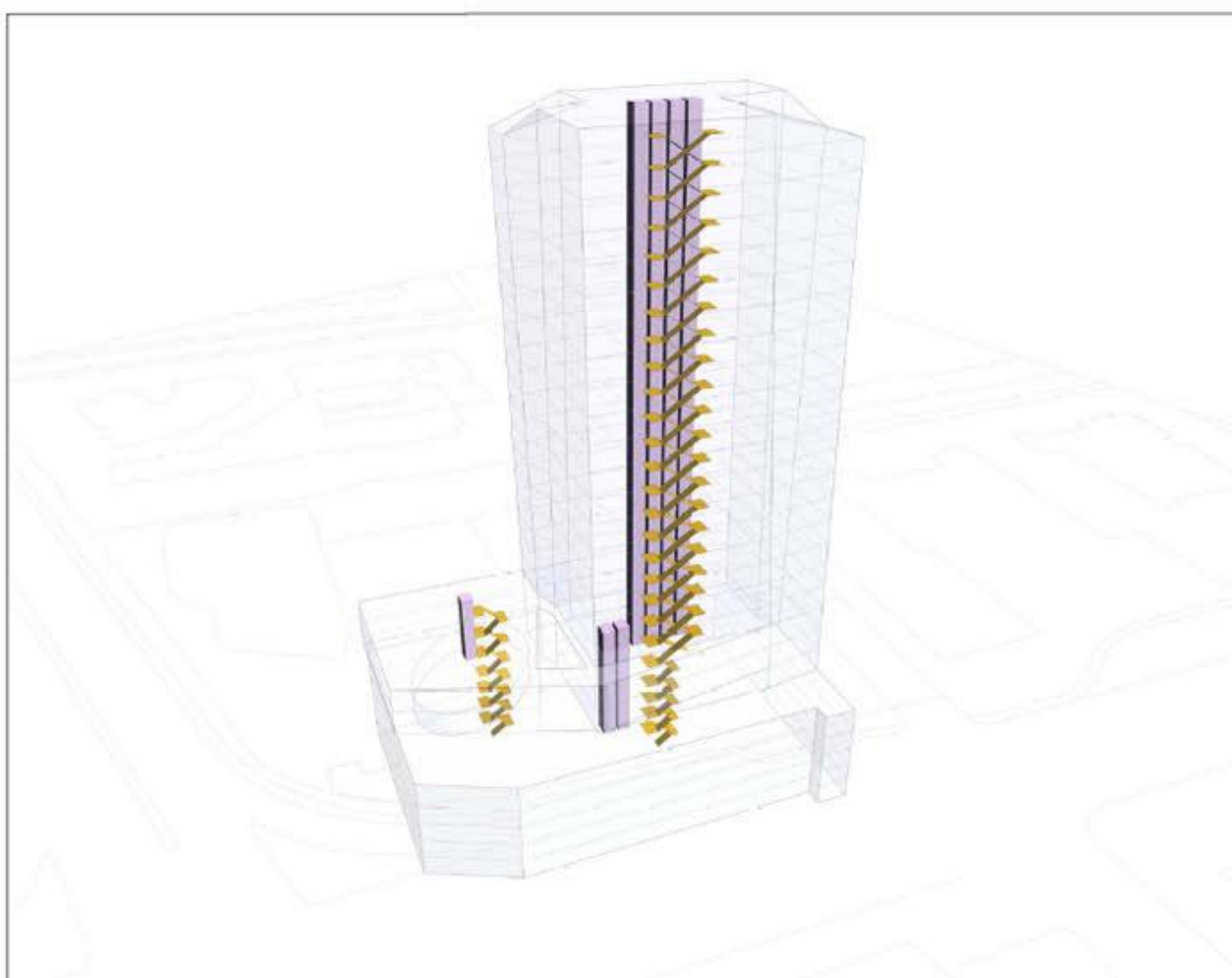
Situacija M 1:500



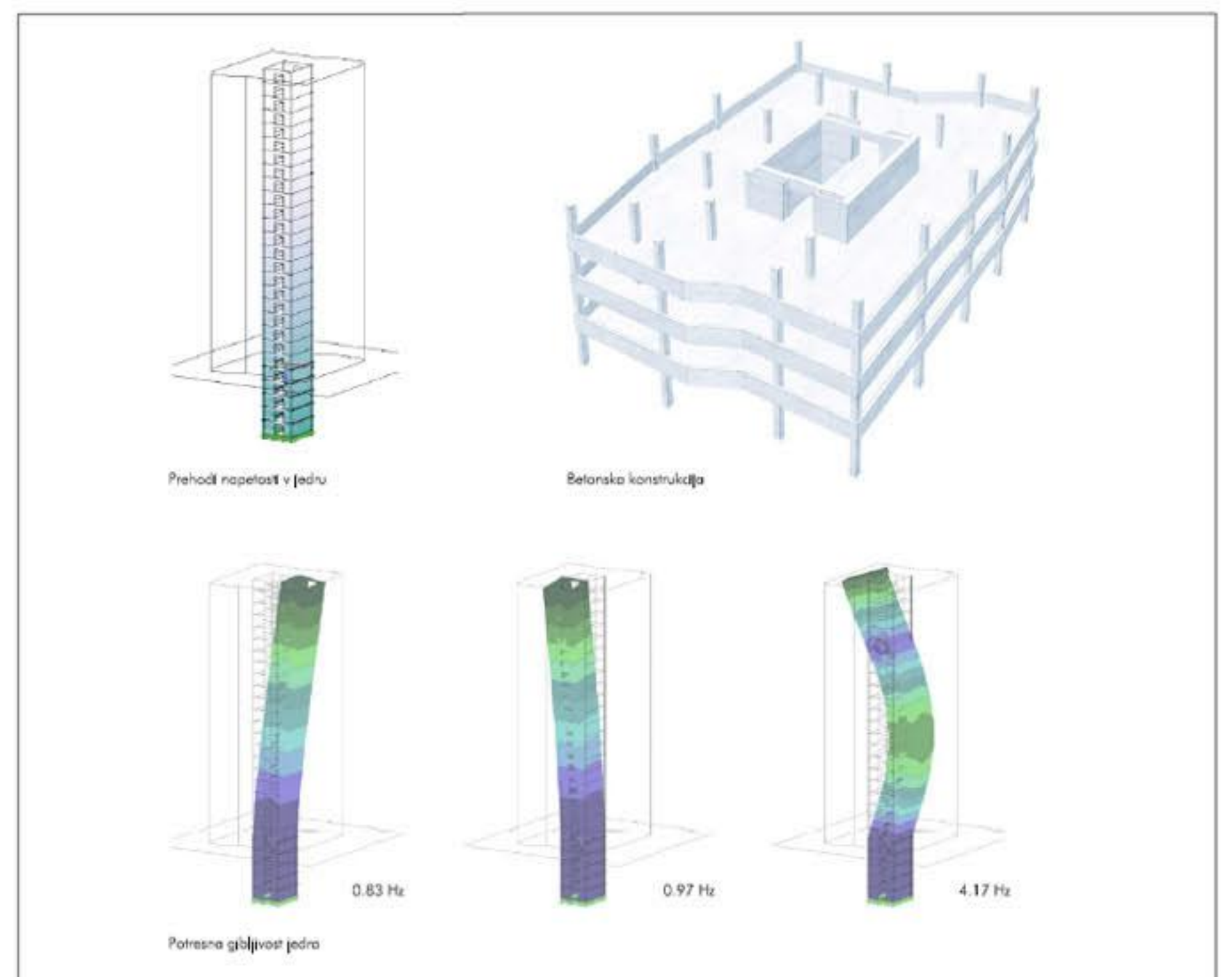
Študija razdelitve volumna



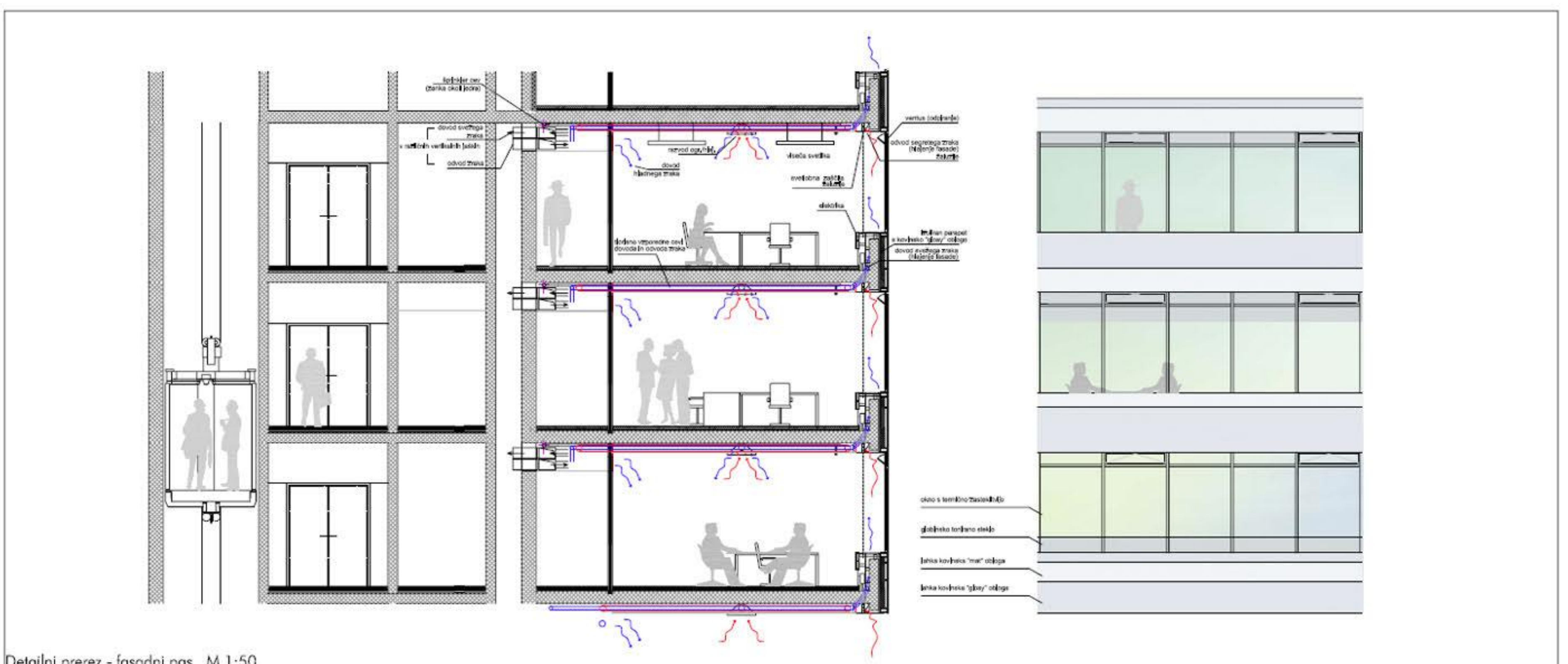
Orientacija stavbe in pogledi



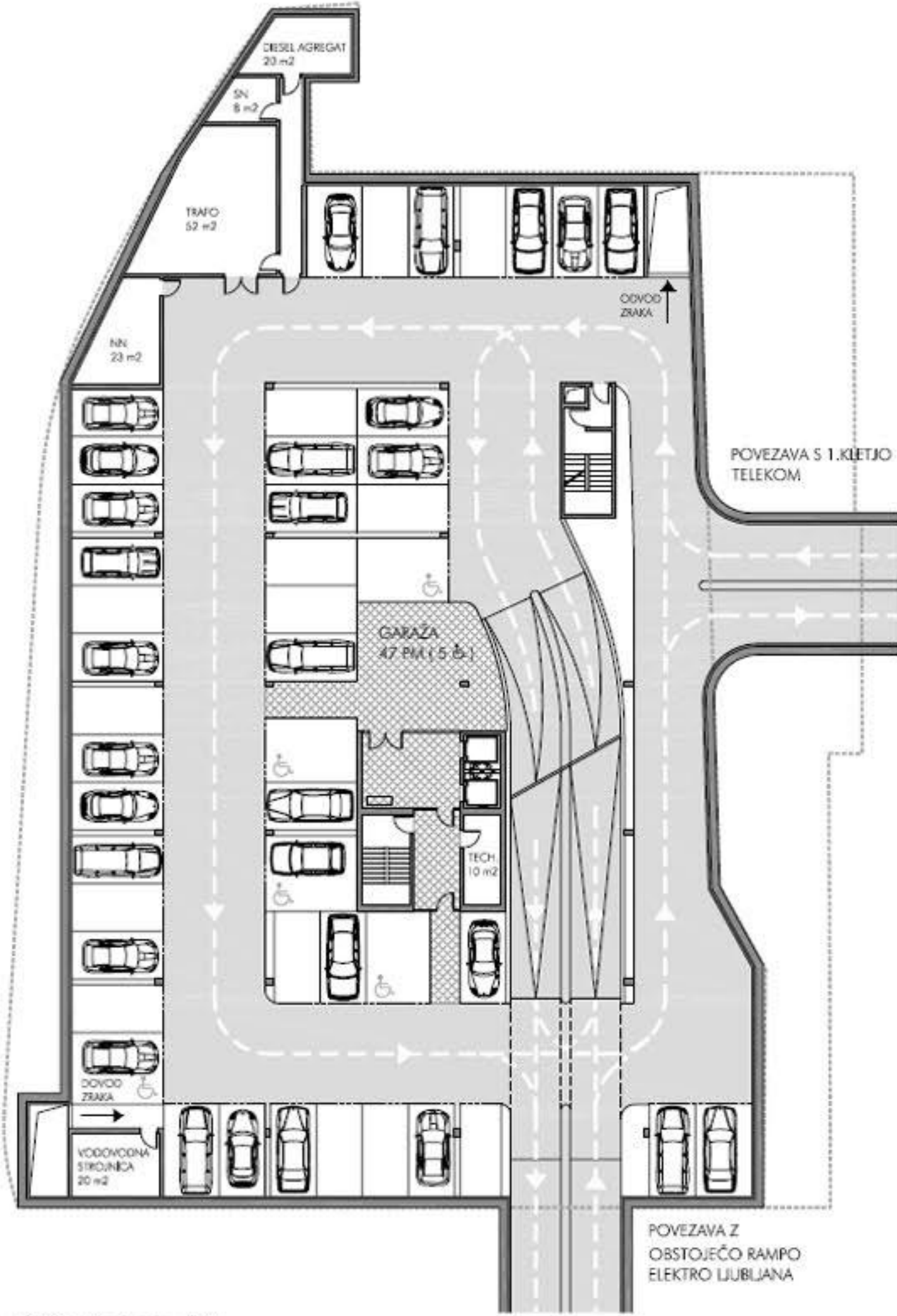
Struktura aksonometrija - vertikalne povezave



Statična struktura



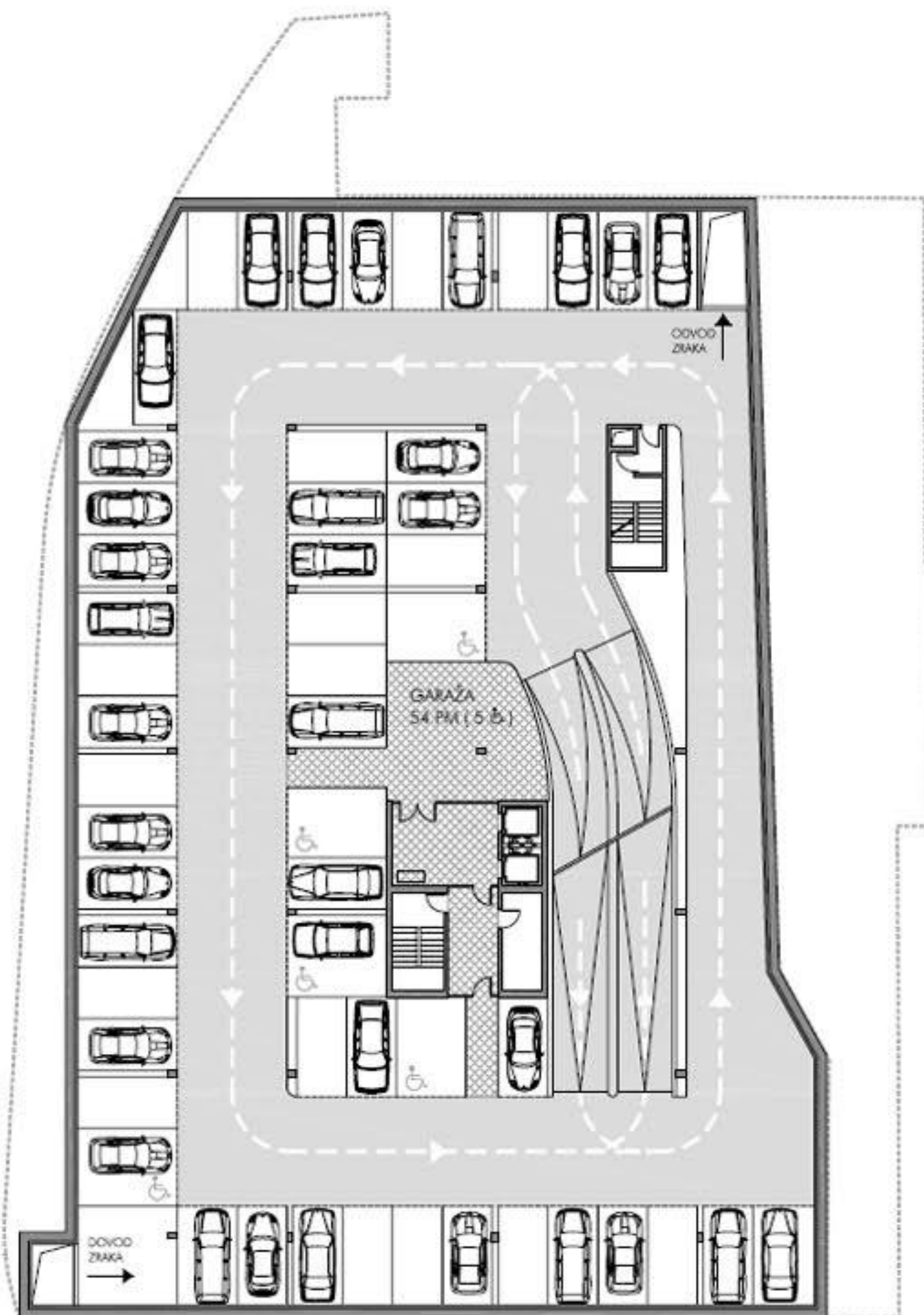
Detajlni prerez - fasadni pas M 1:50



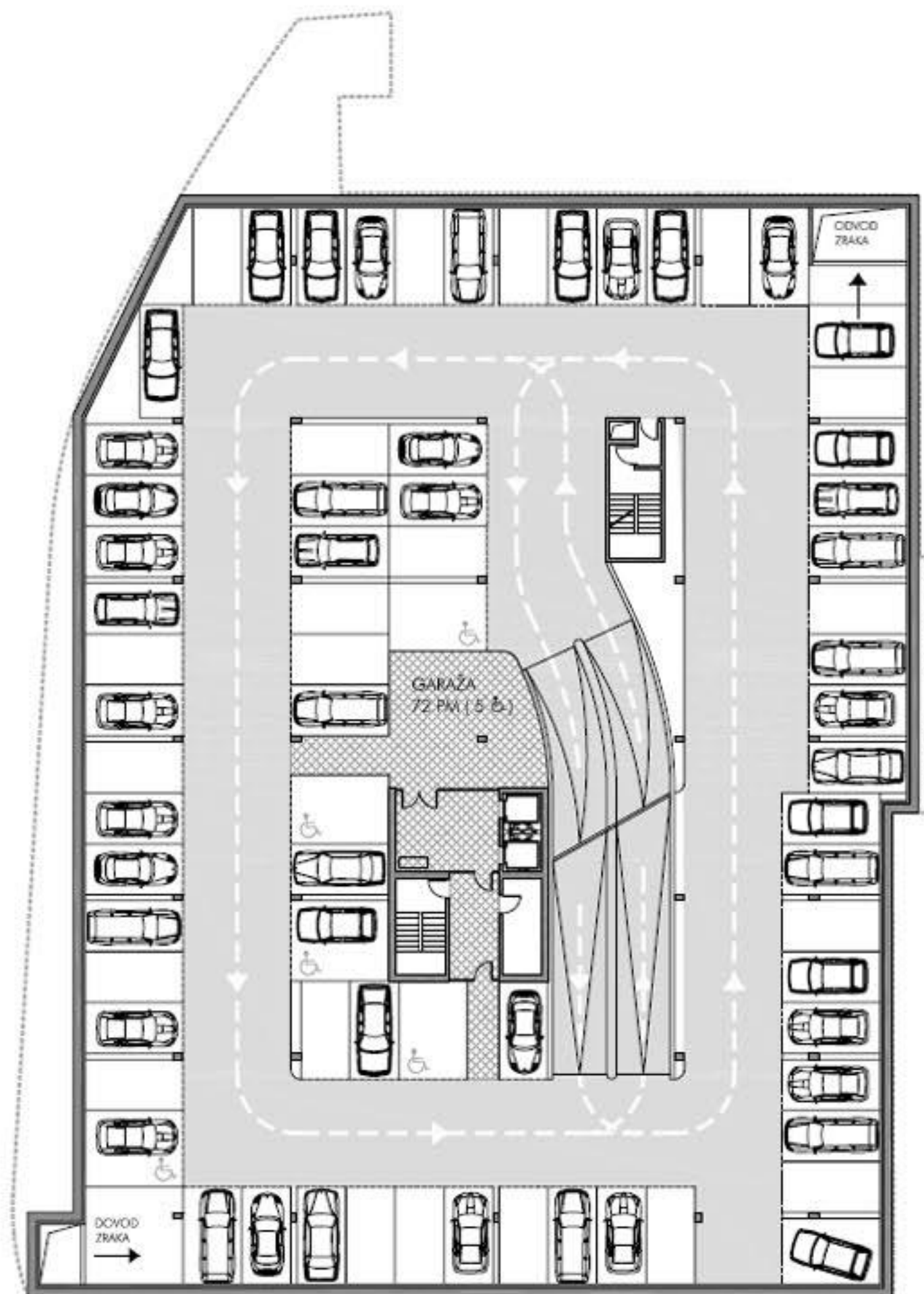
1. KLET - Varianta "A"
47 parkirnih mest (5 inv.p.m.)



5. KLET - Varianta "A"
47 parkirnih mest (6 inv.p.m.)

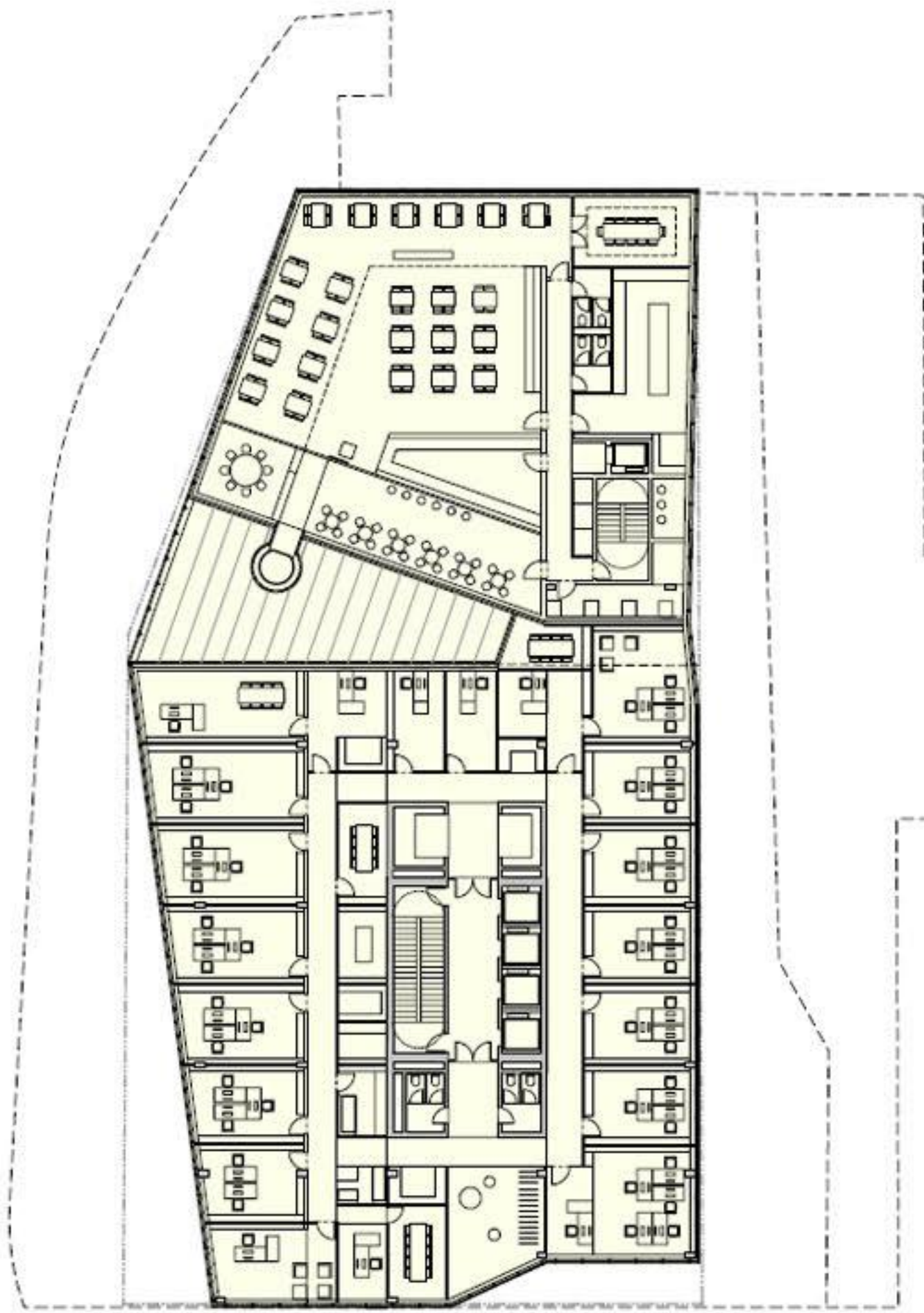


2.-4. KLET - Varianta "A"
54 parkirnih mest (5 inv.p.m.)

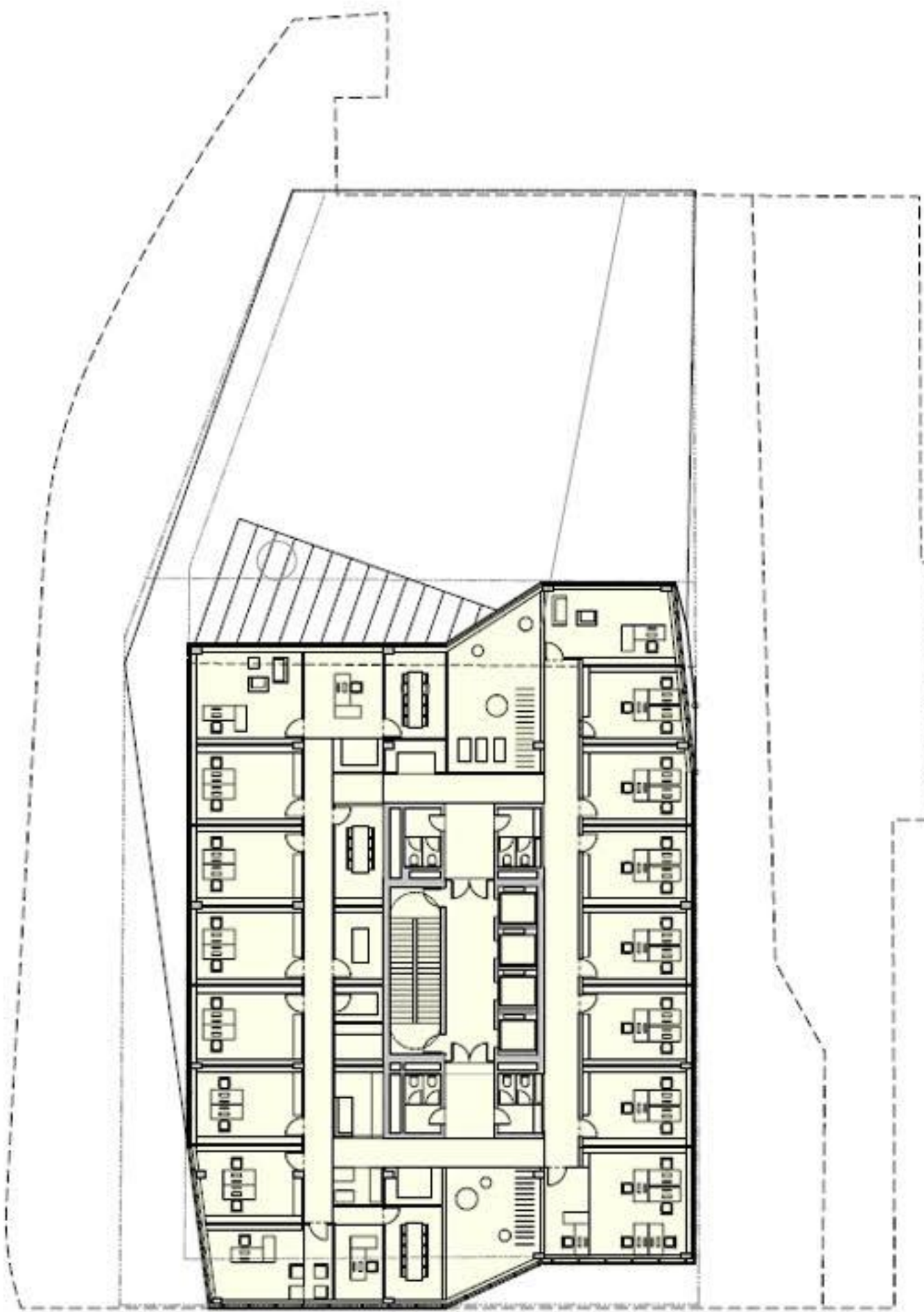


2.-4. KLET - Varianta "B"
72 parkirnih mest (5 inv.p.m.)

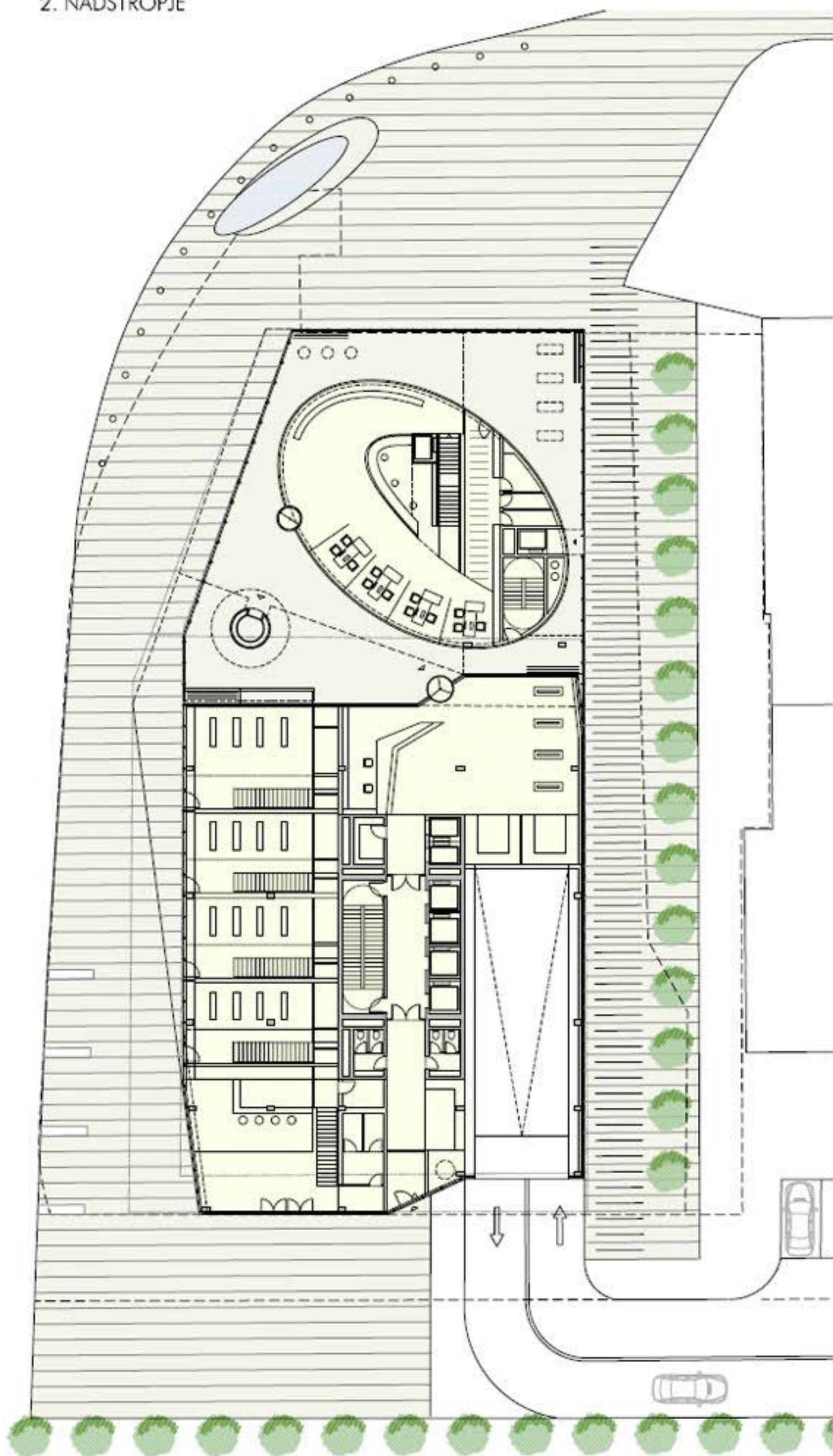
SKUPNO ŠTEVILO PARKIRNIH MEST:
- VARIANTA "A" = 256 P.M. (1. PARCELNA LINIJA)
- VARIANTA "B" = 334 P.M. (2. PARCELNA LINIJA)



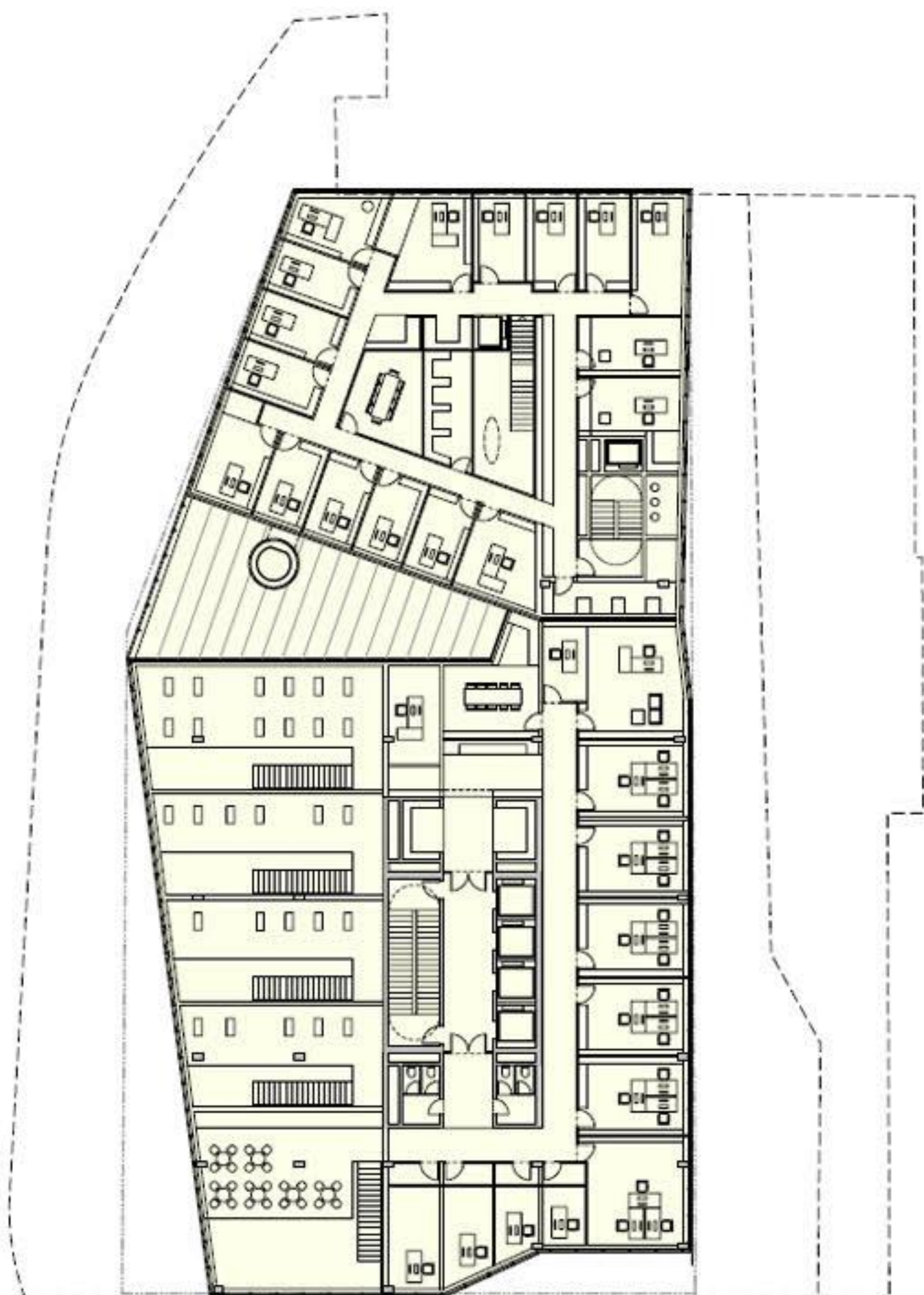
2. NADSTROPJE



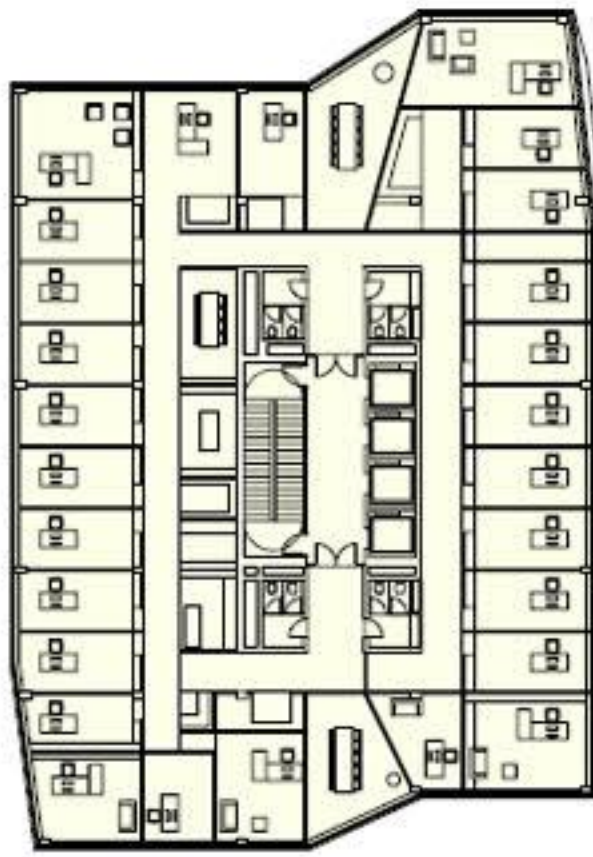
TIPIČNA ETAŽA



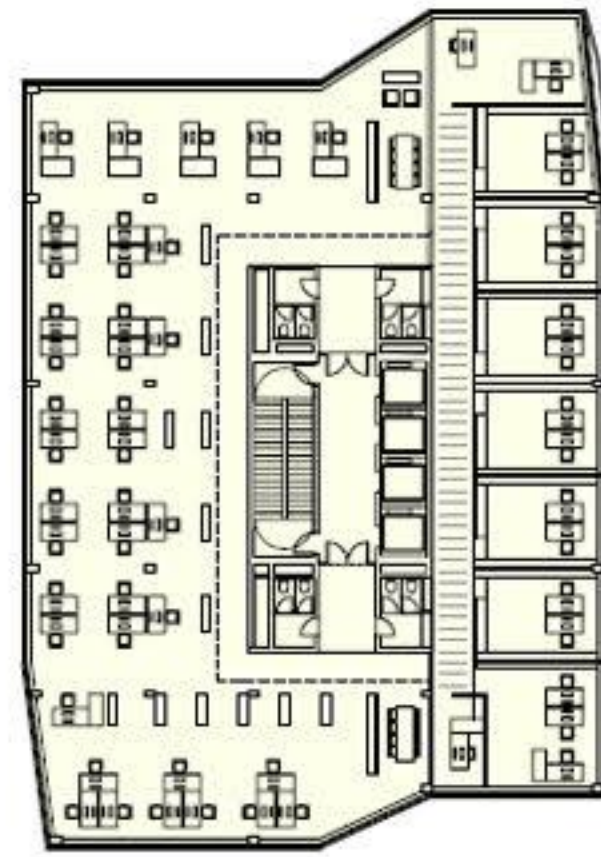
PRITLIČJE



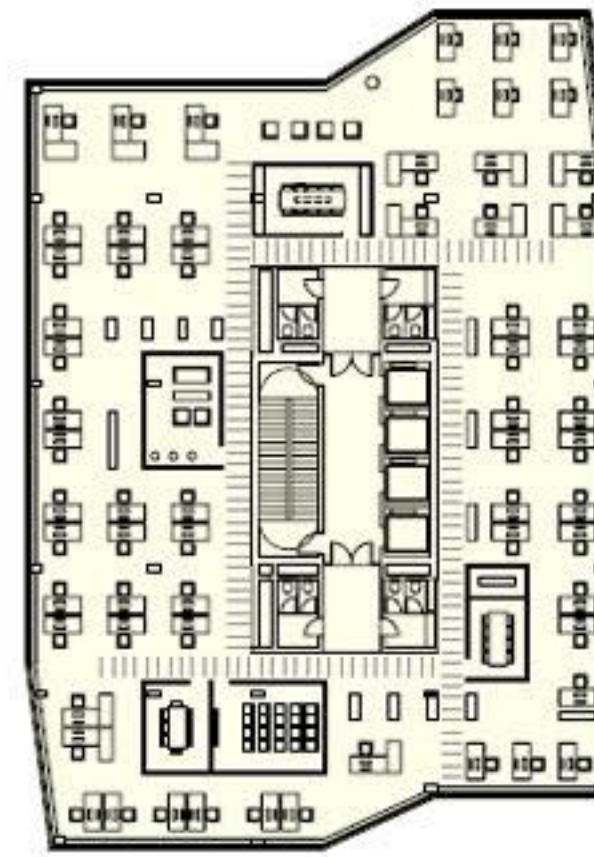
1. NADSTROPJE



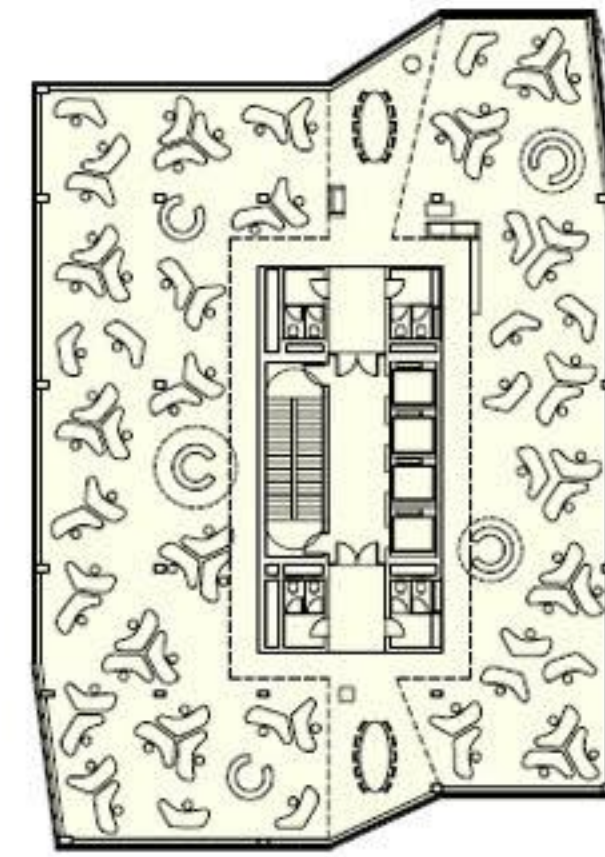
Samostojne pisarniške enote



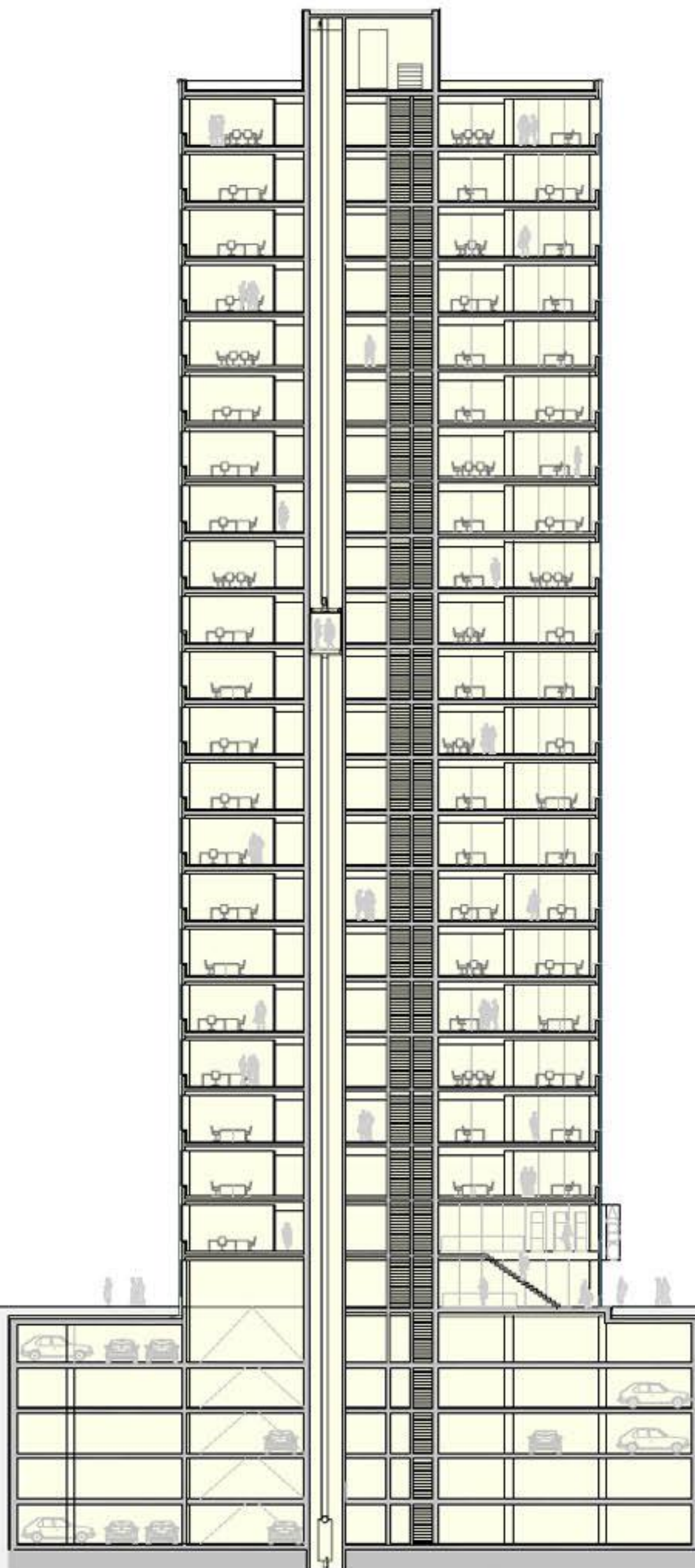
Kombinirana delitev



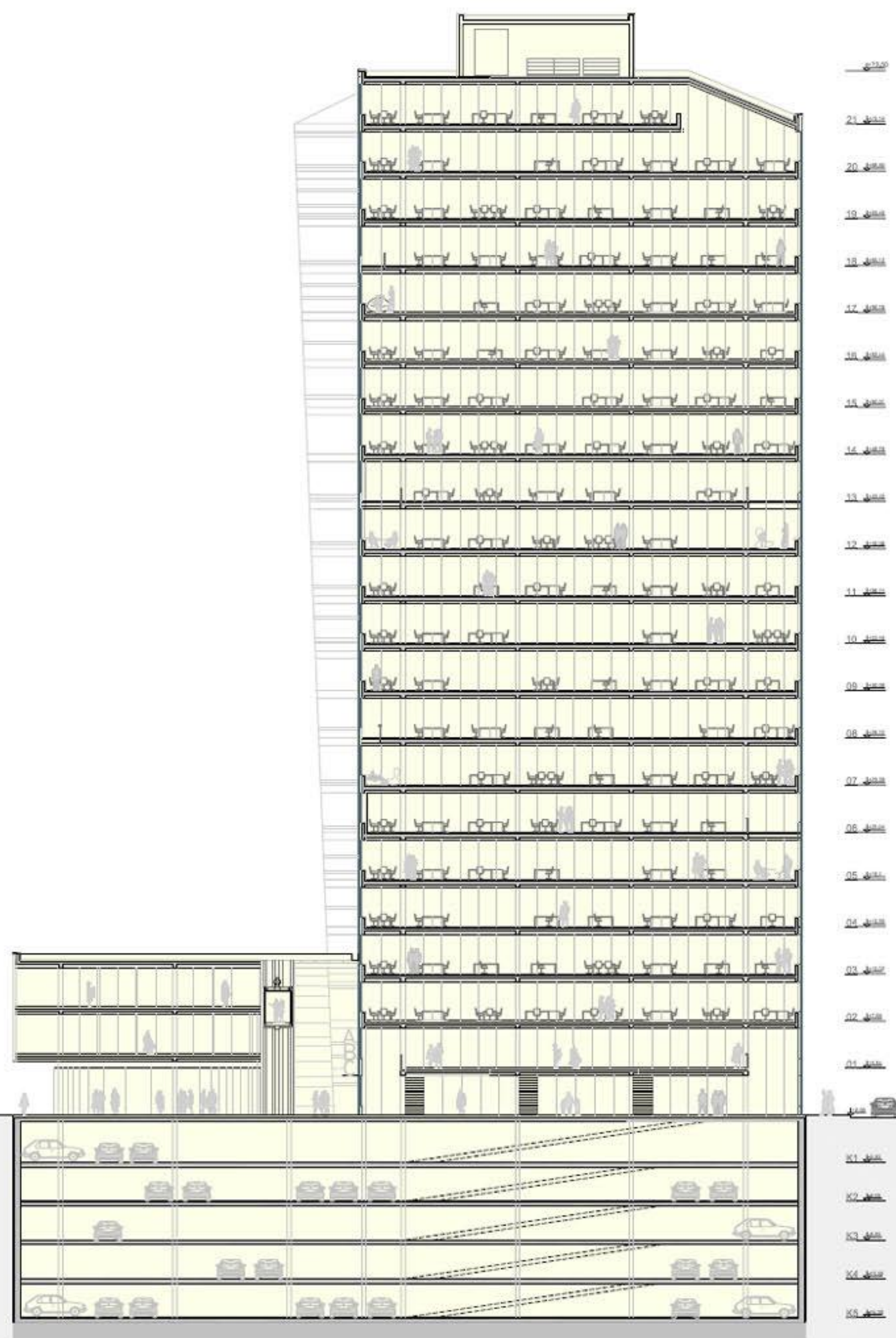
Oceanski florisi var. A



Oceanski florisi var. B



Prerez A-A

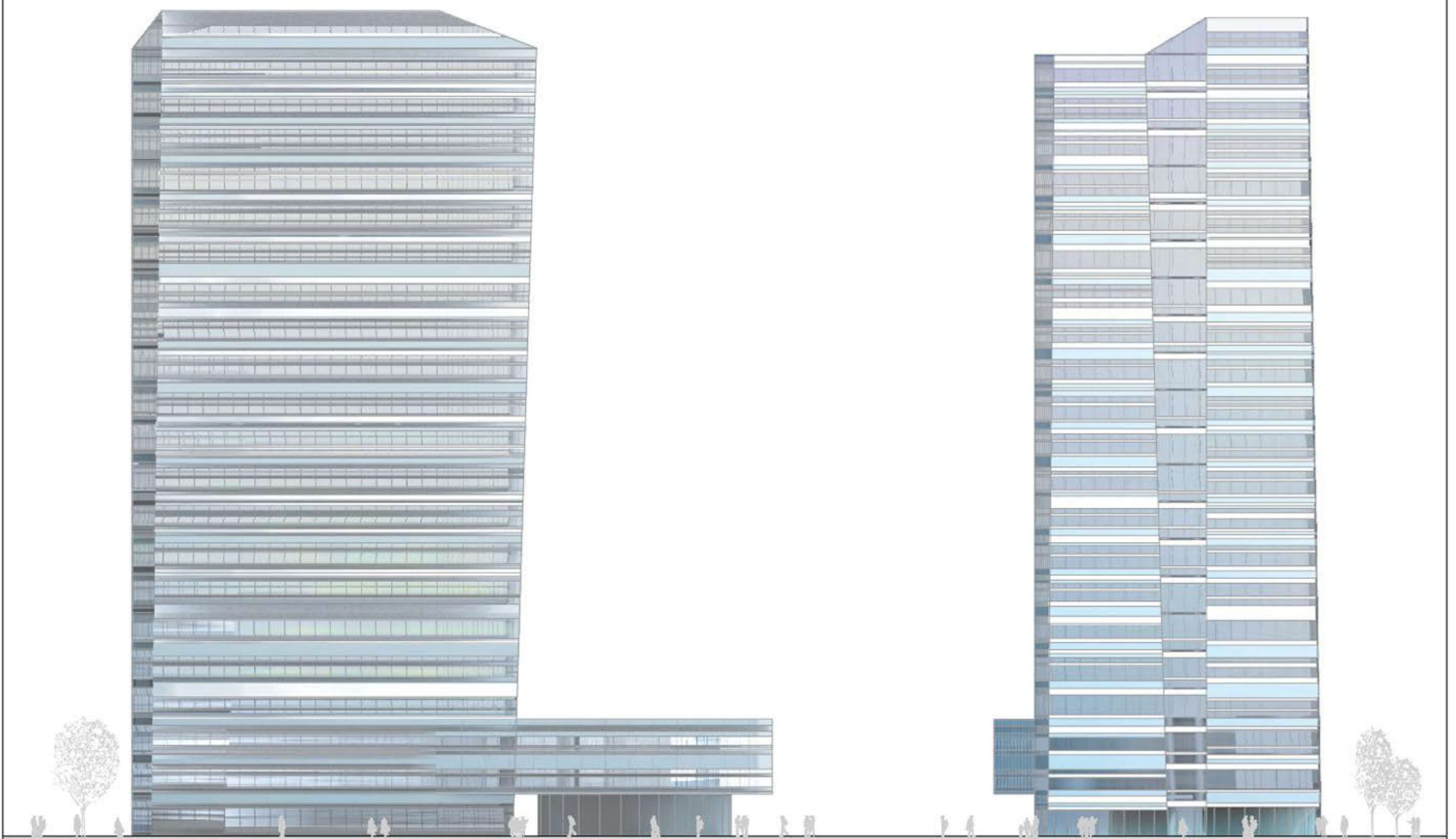


Prerez B-B



Severna Fasada

Zahodna Fasada



Vzhodna Fasada

Južna Fasada



Severna mestna vrata

Pogled iz Dvoržakove ulice



Pogled iz Tivolske ulice