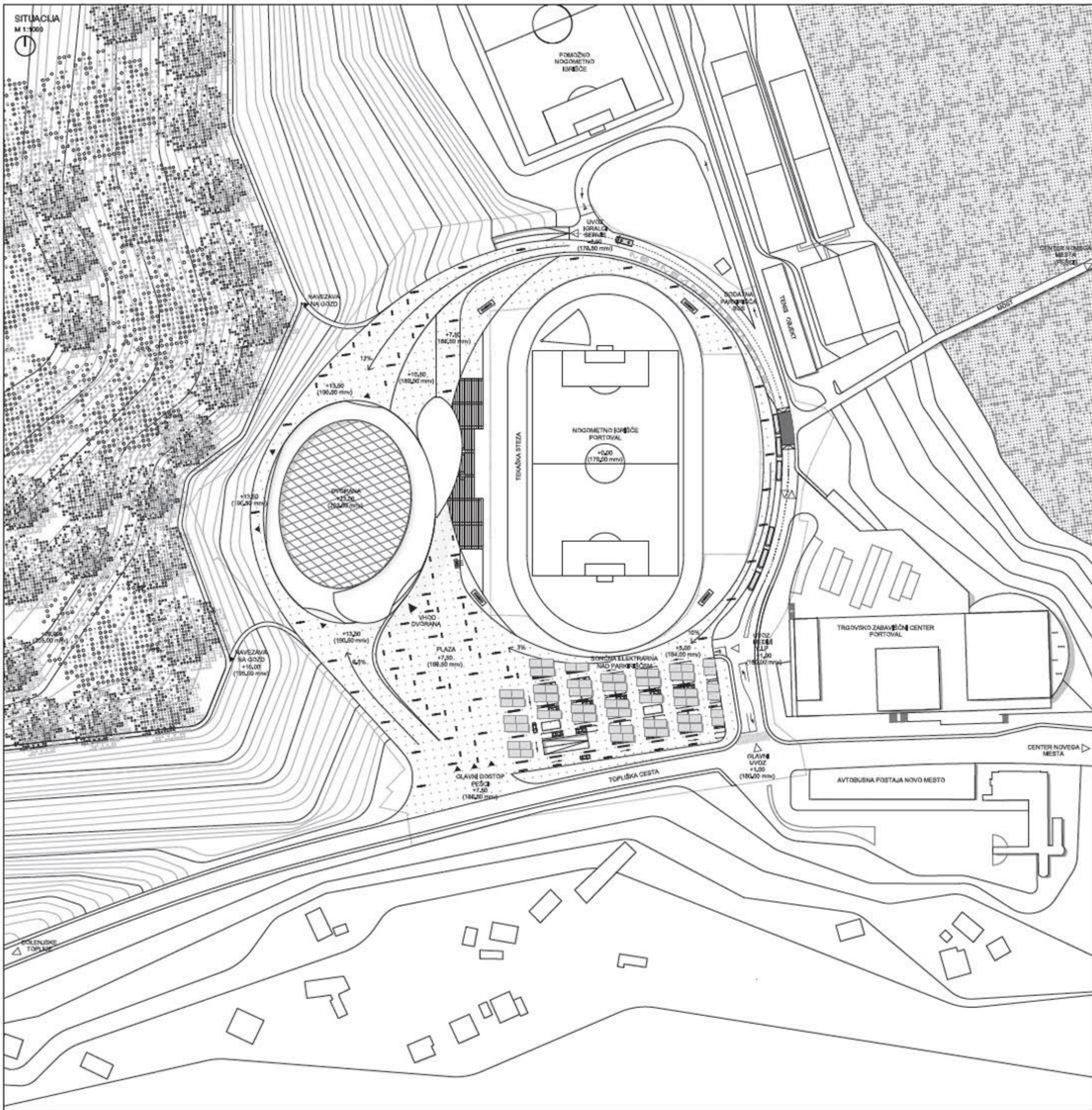
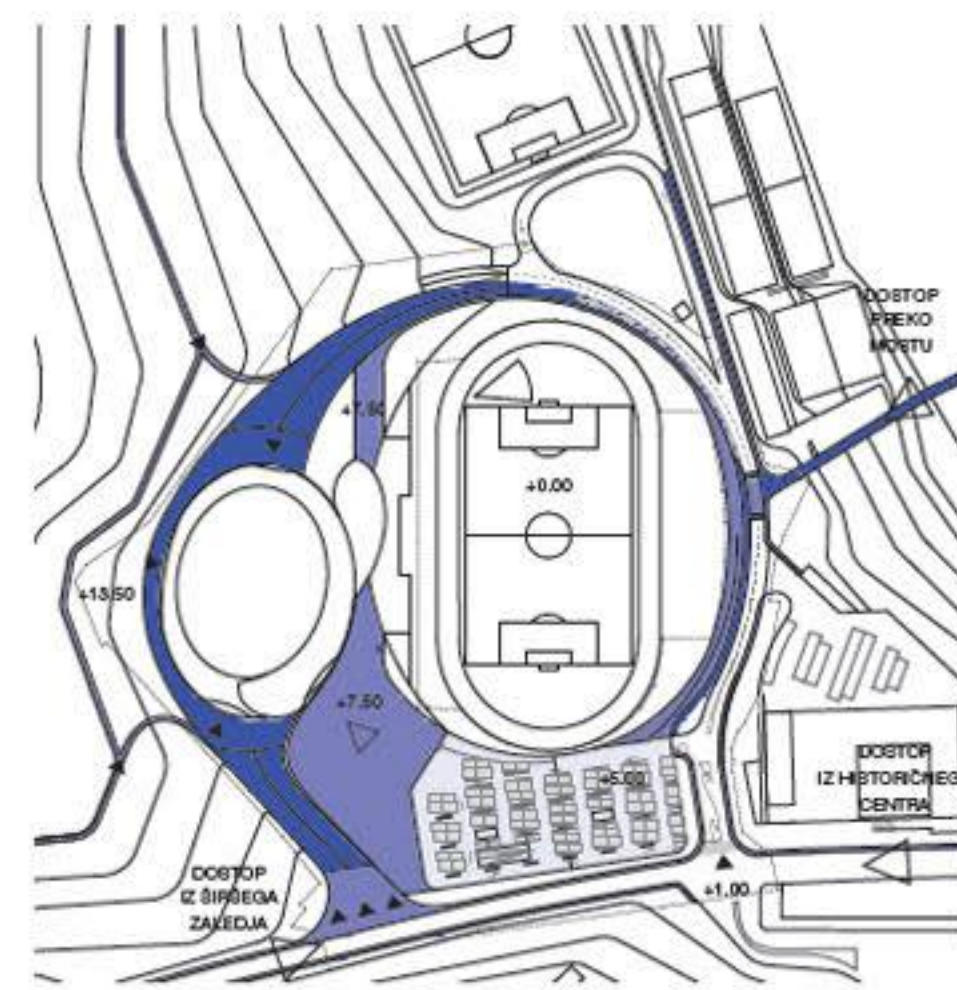


ŠPORTNO REKREACIJSKI PARK PORTOVAL



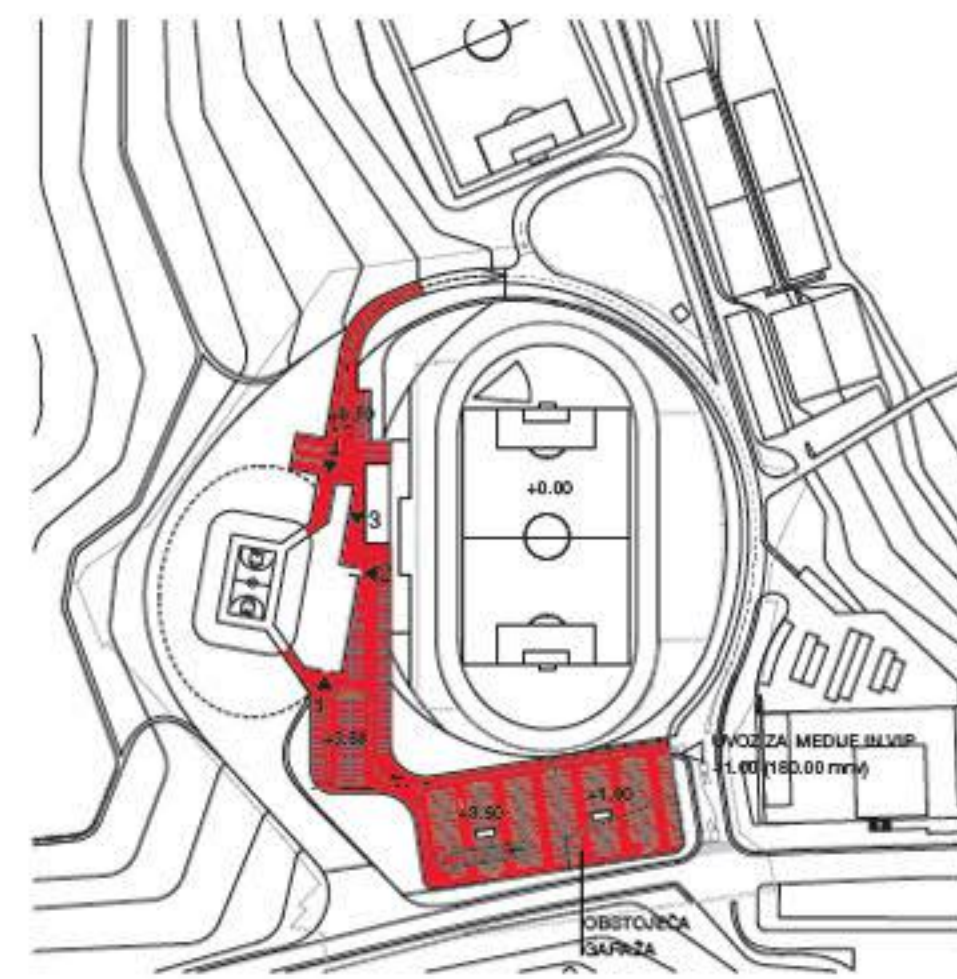
PEŠPOTI

PRIMARNE DEKLINARNE POHOVNO PARKIRIŠČE



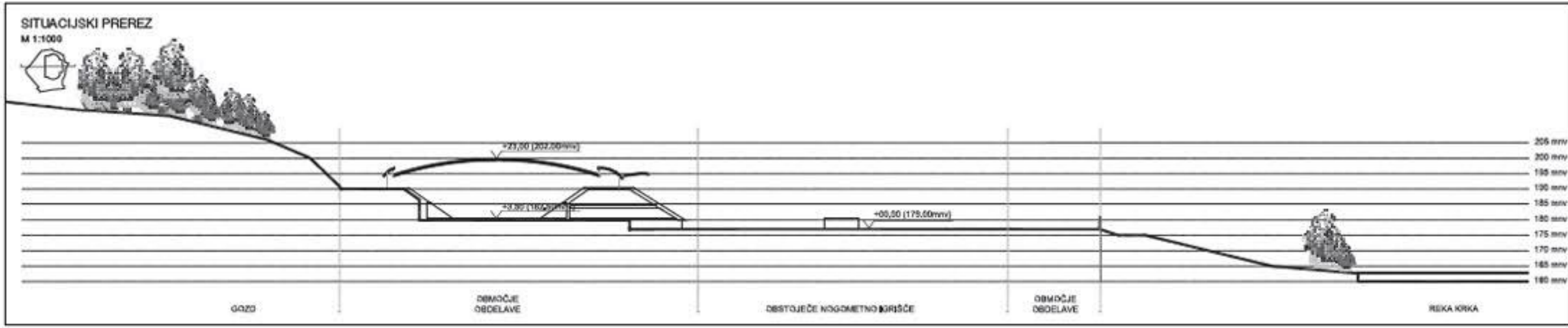
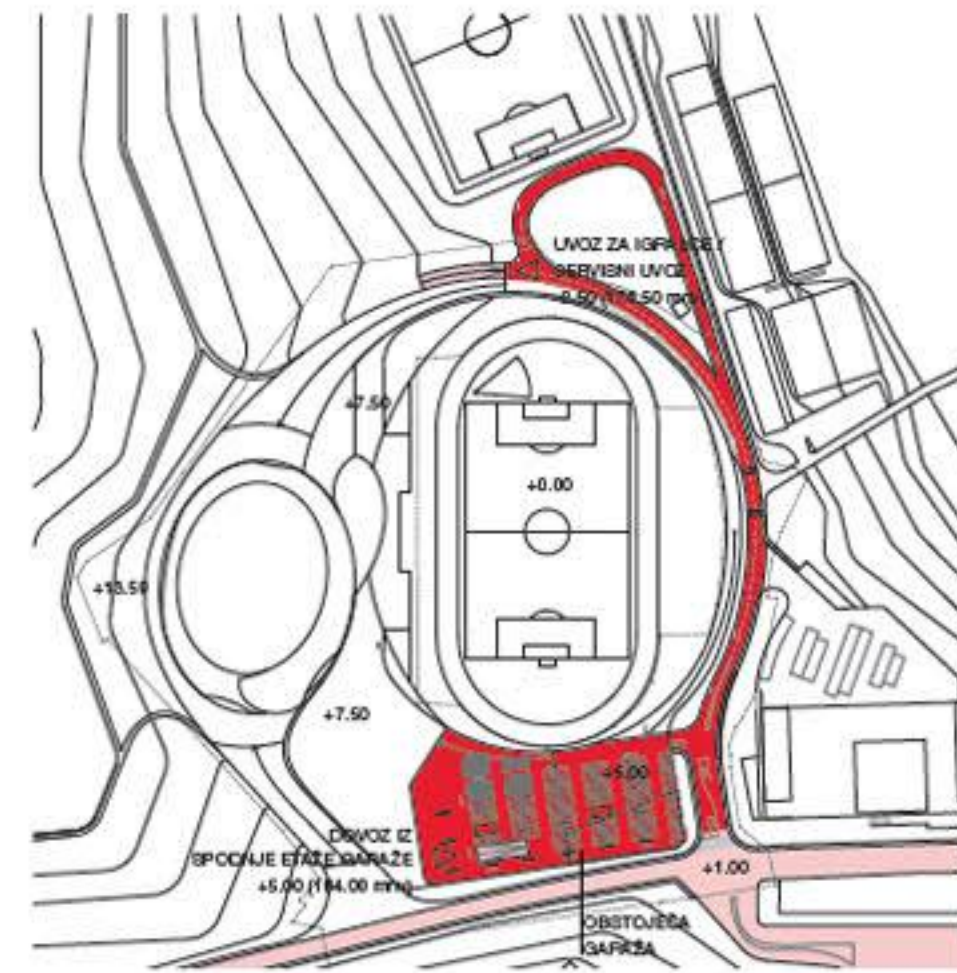
PROMETNA UREDETEV NIVO +3.50

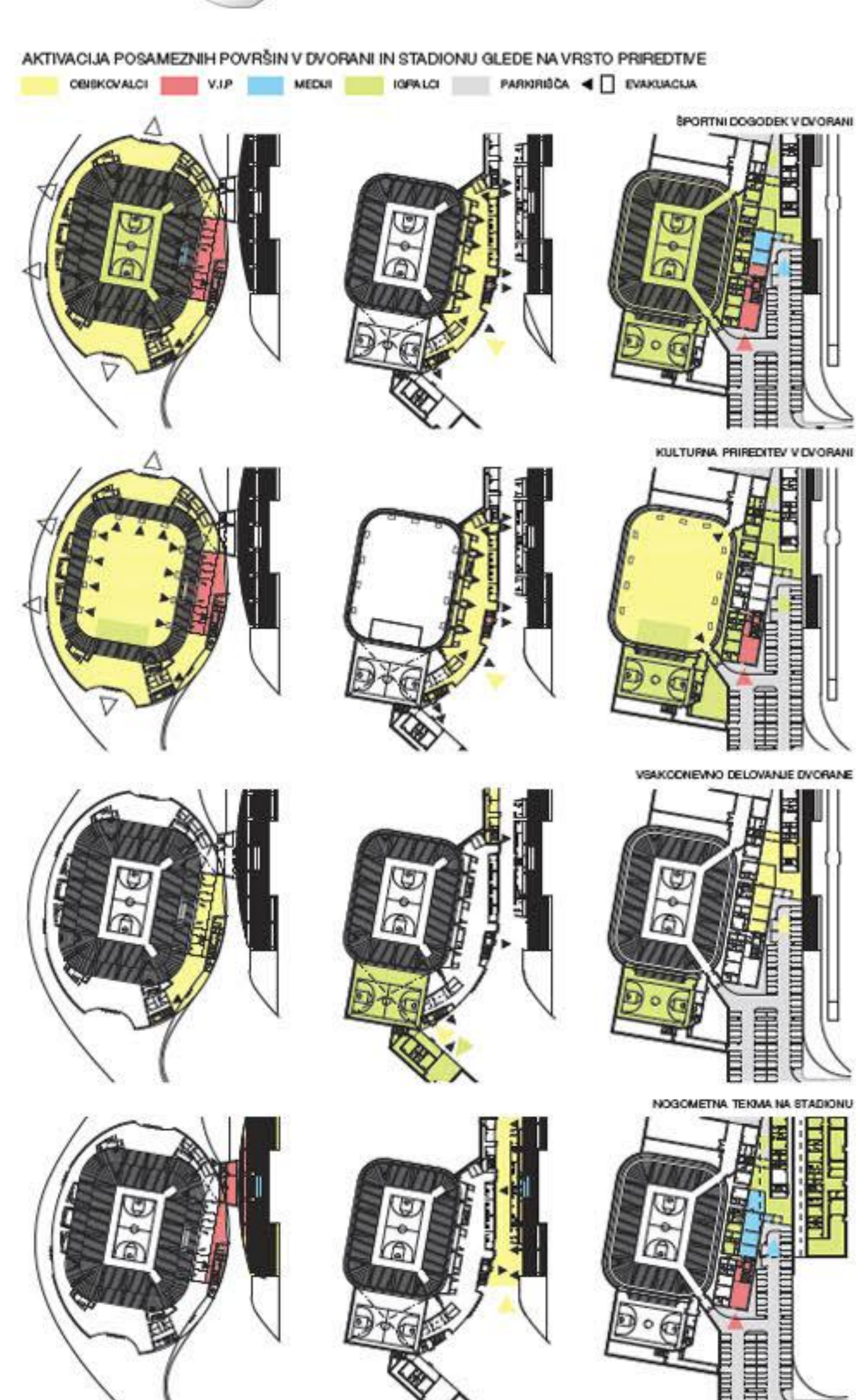
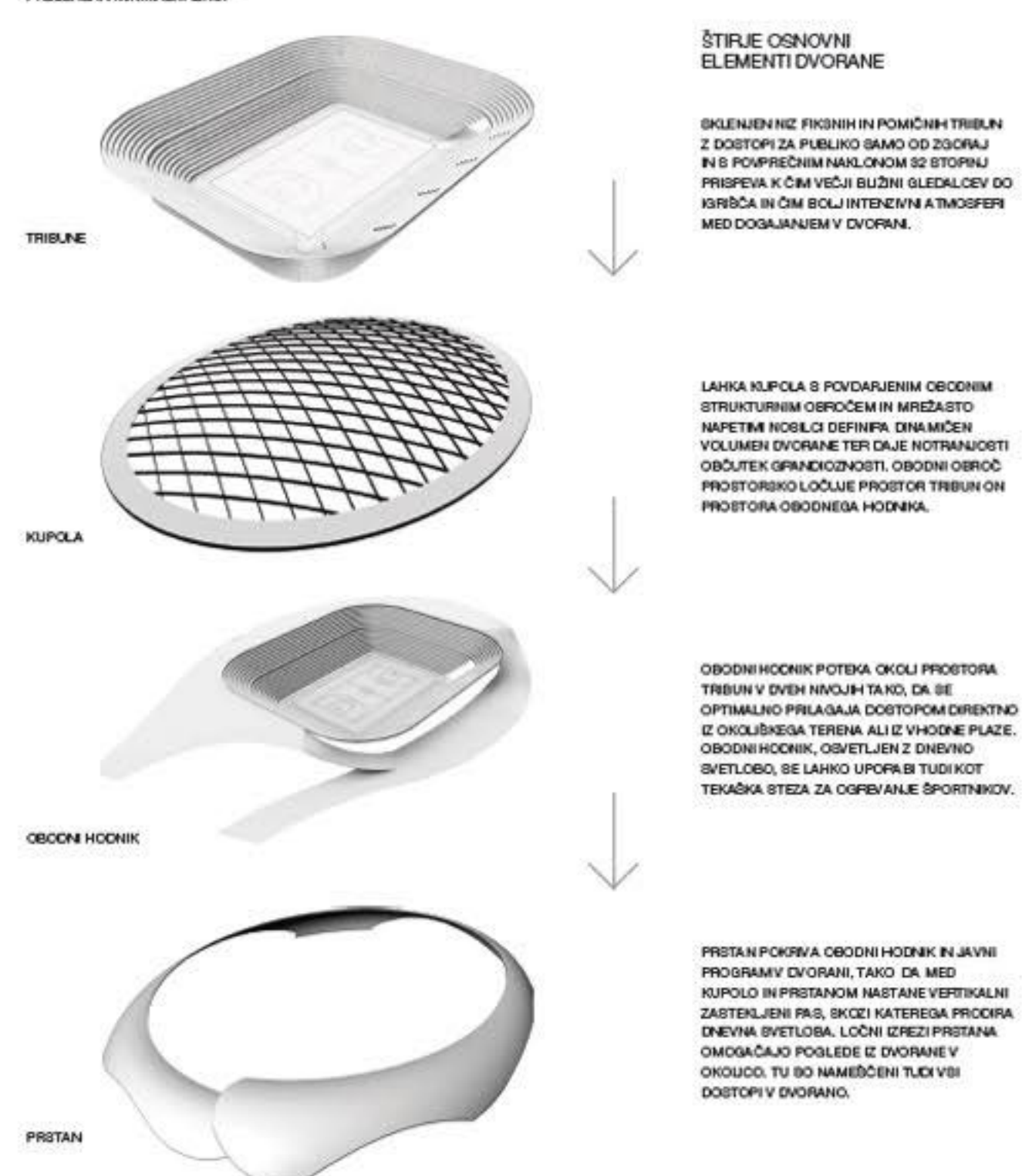
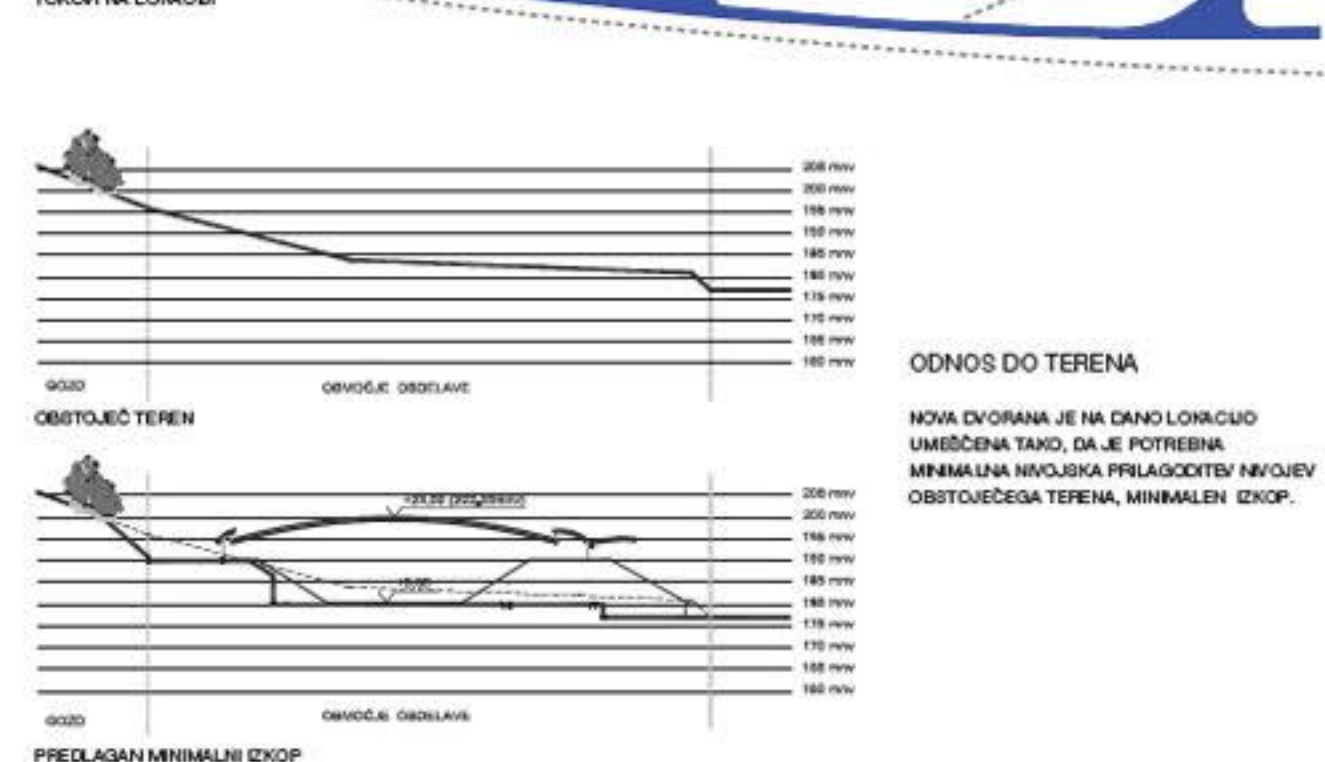
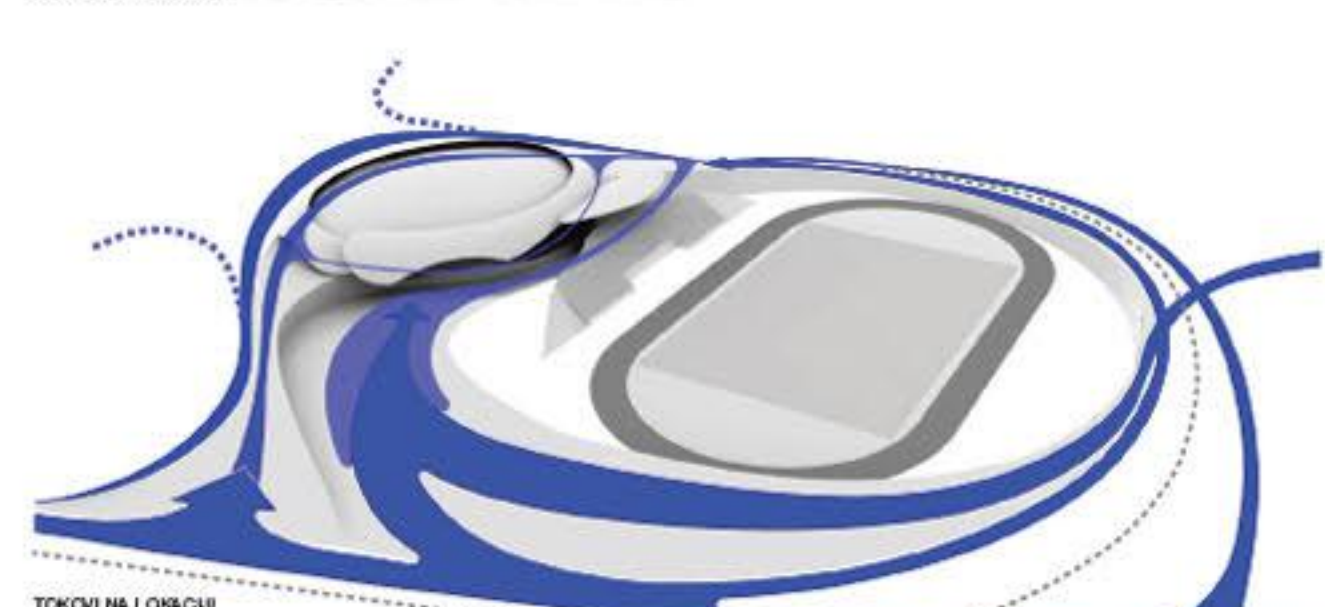
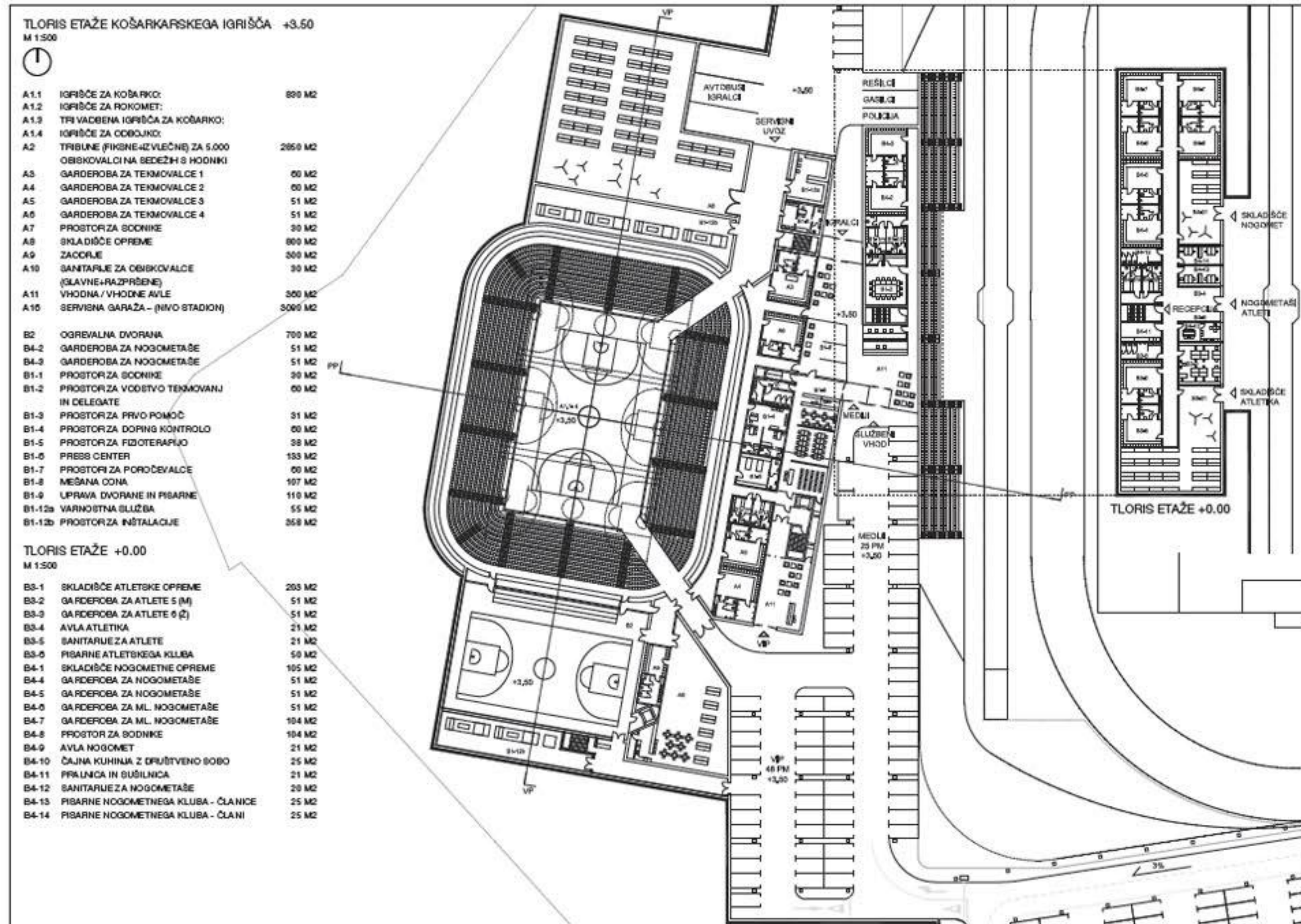
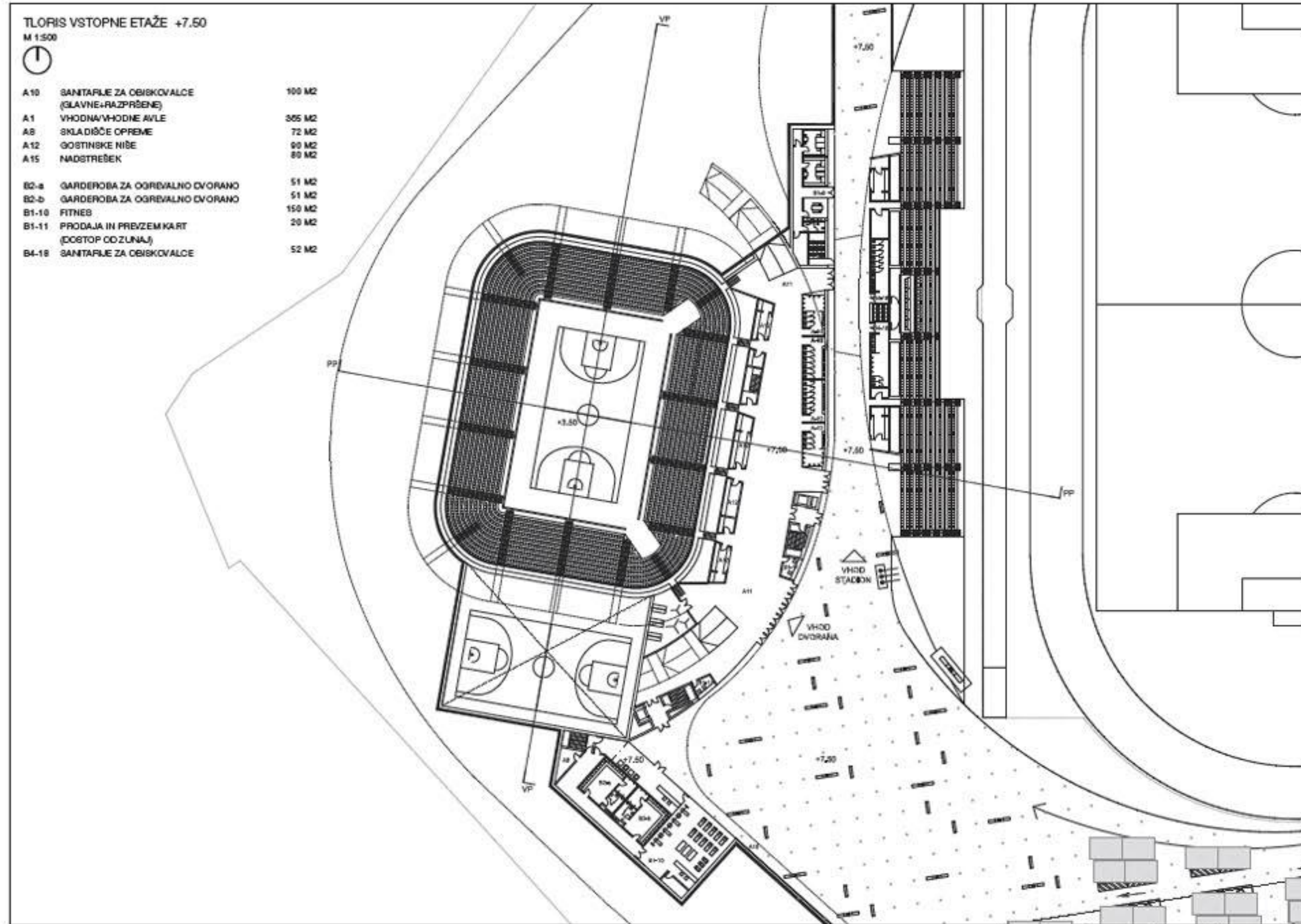
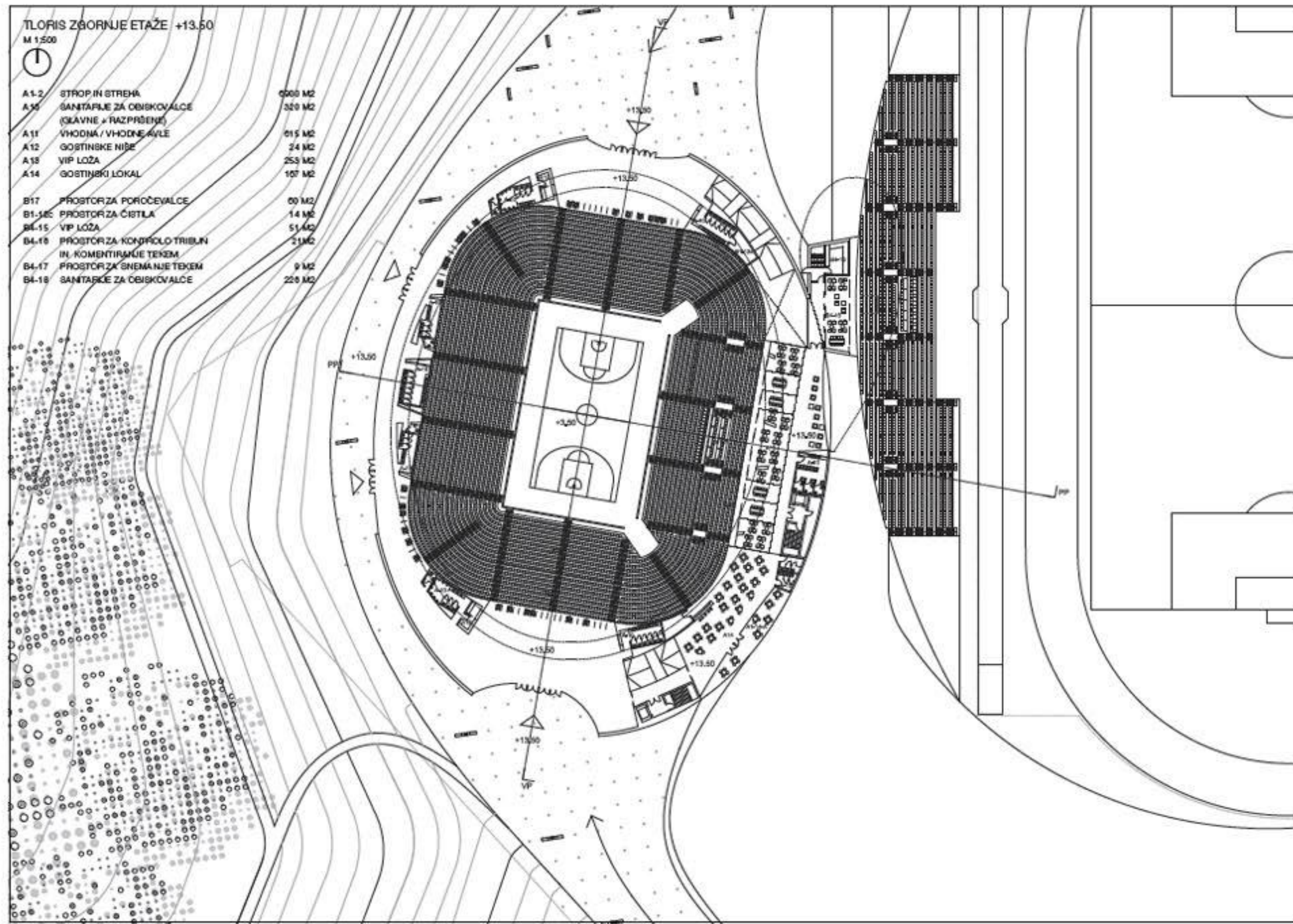
NOVA PROMETNA UREDETEV OBSTOJEČE 1 VP 2 MEDIU 3 IGRALCI 4 DOSTAVA

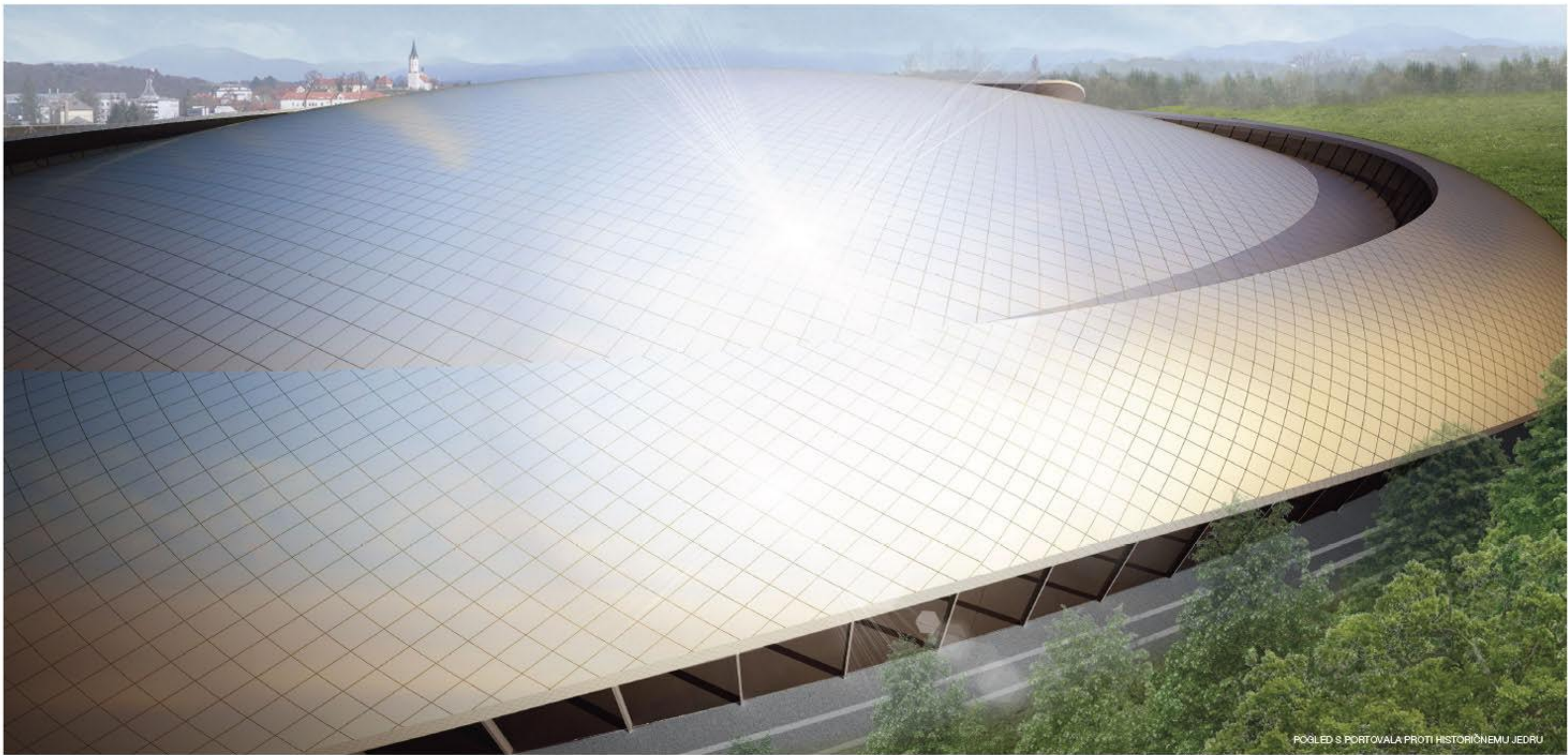


PROMETNA UREDETEV NIVO +1.00 IN +5.00

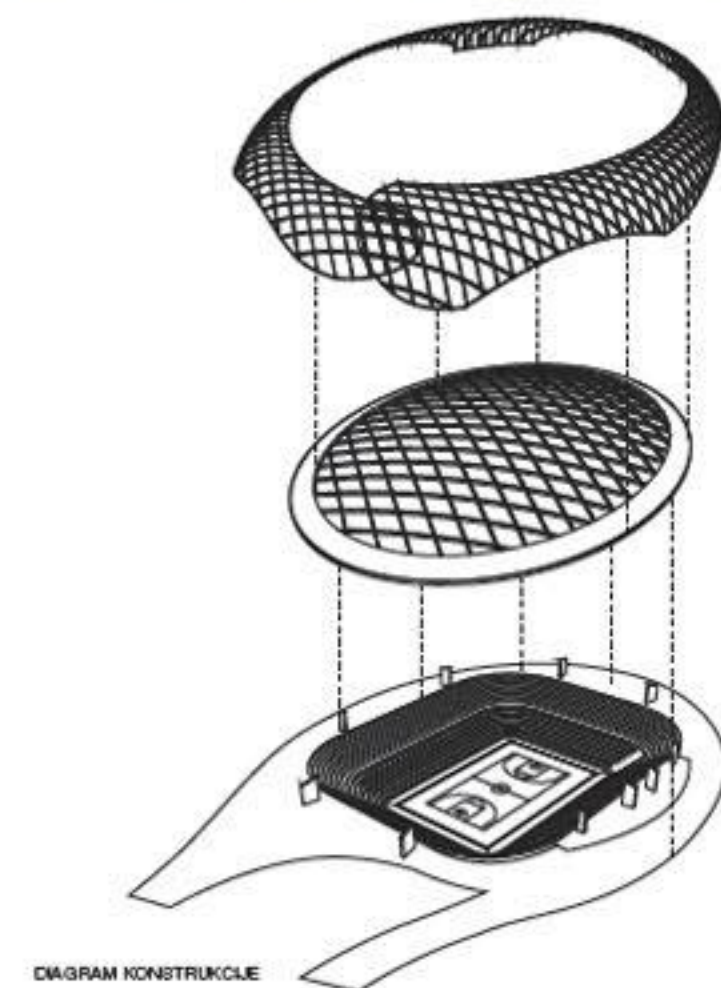
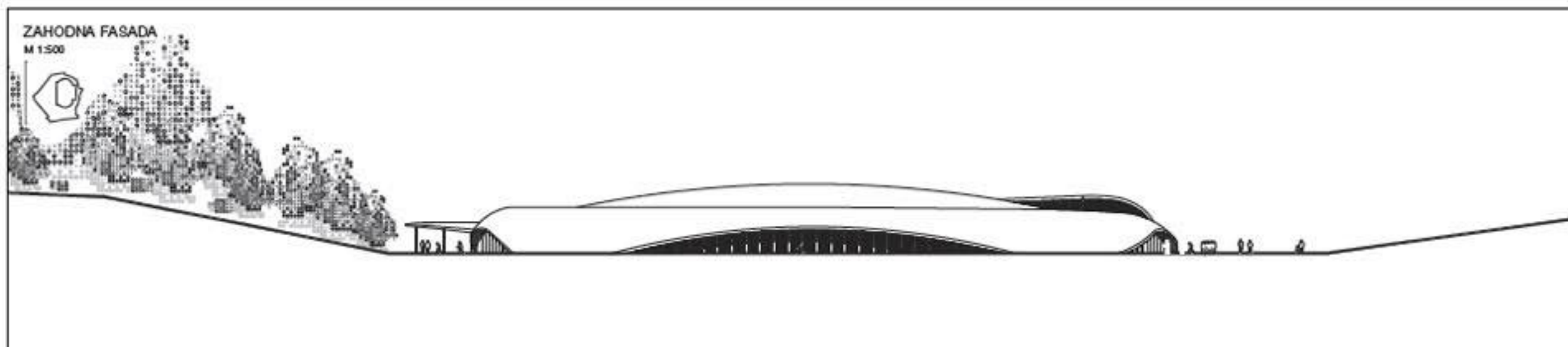
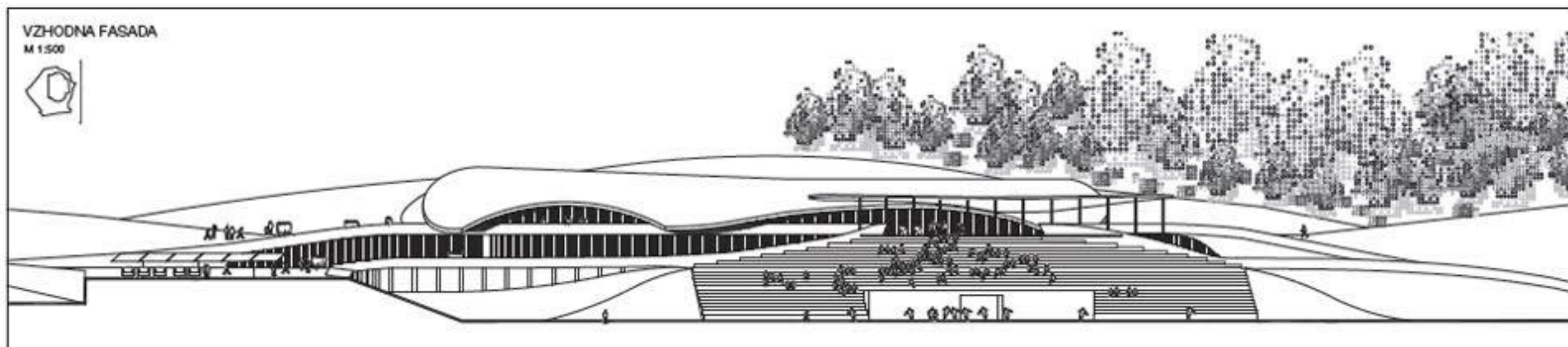
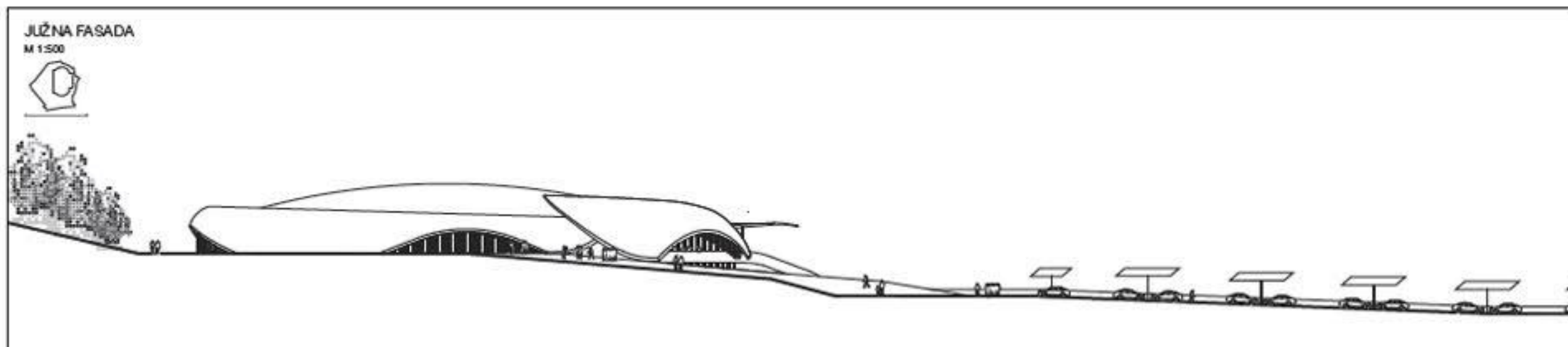
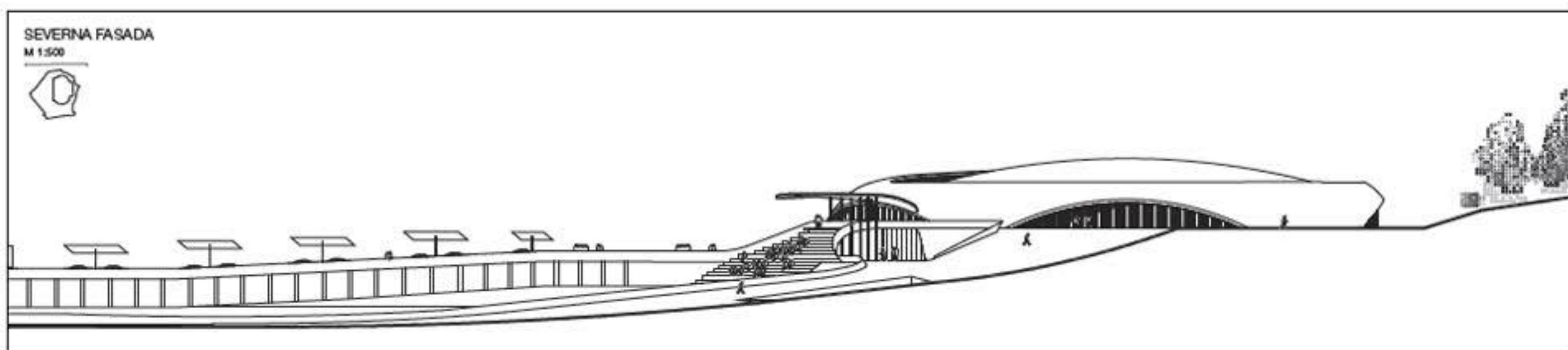
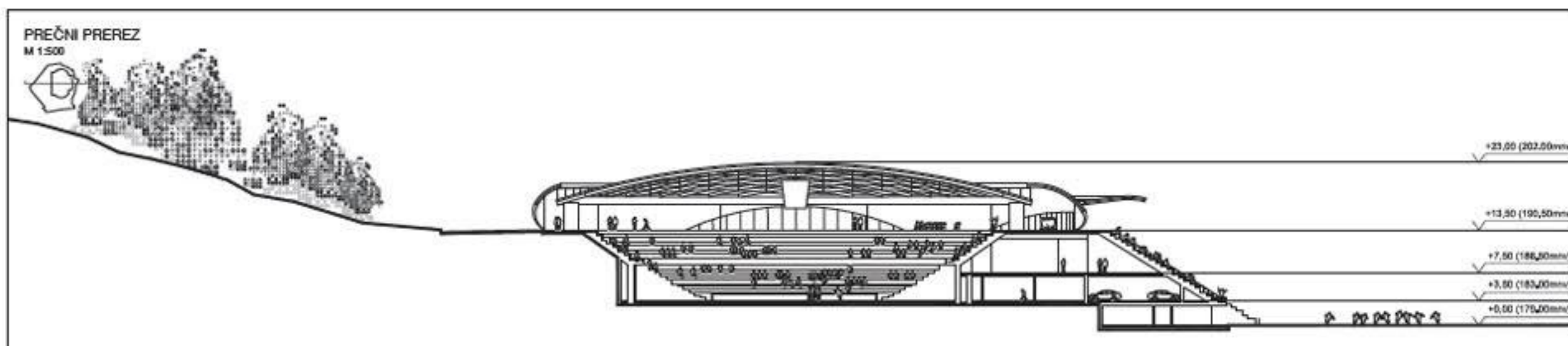
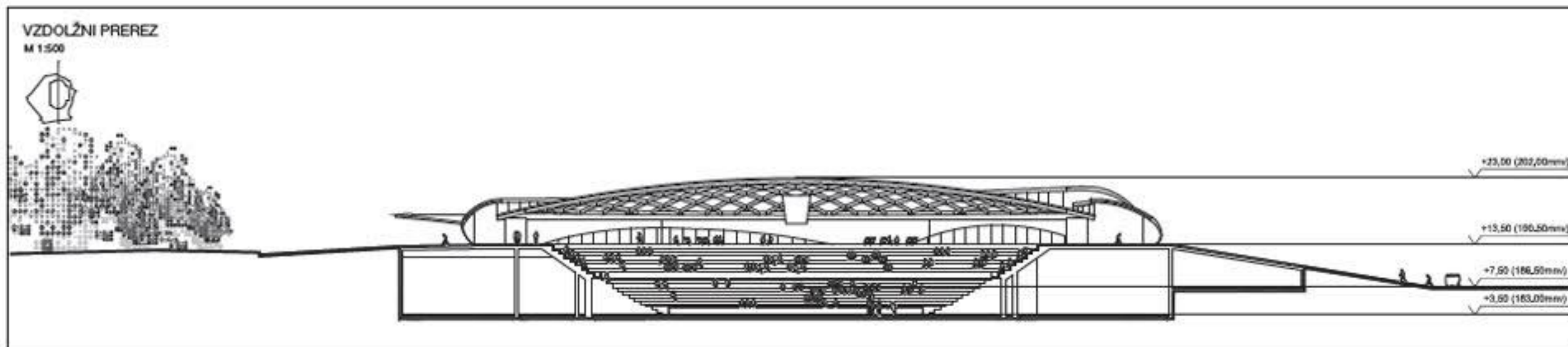
NOVA PROMETNA UREDETEV OBSTOJEČE







POGLED S PORTOVALA PROTI HISTORIČNEMU JEDRU

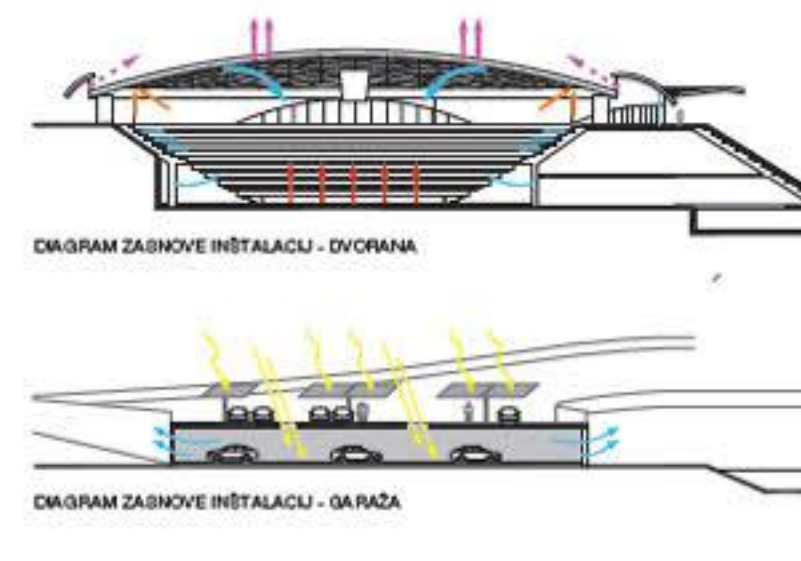


ZASNOVA KONSTRUKCIJE

GEOMETRIJA JEKLENIH NOBLEV SLEDI POVRBNIM KUPOLE, KI JE DOLOČENA OPTIMIZIRANIMI LOČNIMI VPRUPLJAMI (VERŽNICA), S TEM JE DOSEŽENA MAKSIMALNA LČNKOVITOST KONSTRUKCIJE IN MAKSIMALNA VITKOST ELEMENTOV, KAR POMEI MINIMALNO PORABO MATERIALA. DIAGONALNI NOBLECI SO ORIENTIRANI V KRAJŠI SMERI ELIPSE, KI DOLOČA OSOB KUPOLE.

PO OBOCU KUPOLE JE PREDVIDEN BETONSKI OBRTOČ, KI ZAVETRAJAJE STREŠNO KONSTRUKCIJO IN HRANITI OMOČNOČA, DA JE STREHA POPRITA Z MINIMALNIM ŠTEVILKOM STEBROV. ZARADI POVEZOVANEGA ČEROČA STEBRNI SO POTREBNI NA VSAKEM KONCU POSAMIČNEGA LOKOVA.

BETONSKI STEBRI S SVOLJO ORIENTACIJO PROTI SREDIČU KUPOLE, POLEJ VERTIKALNIH, PREVZEMAJO PADALNE BILE KUPOLE.



ZASNOVA INŠTALACIJE (EKOLOŠKO-TRAJNOSTNI VIDIK)

- ← TALNO OGREVANJE VZDREVANJE DO TEMP. +12°C (POGREVANJE DO TEMP. +18°C)
- ↑ DOVOD ZRAKA POD BEDEŽI
- ↑ DELNI DOVOD ZRAKA POD STROPOM
- ↑ DELNI DOVOD ZRAKA POD ZLOŽLJIVIMI TRILJUNAMI
- ← OČVOD ZRAKA POD STROPOM
- ← NARAVNI ODVOD DIMA IN TOPLOTE
- ← MEHANSKI ODVOD DIMA IN TOPLOTE
- FOTOVOLTAČNI PANELI NA STREHI GARAJA
- ← NARAVNO PREZRAČEVANJE GARAJA
- ← NARAVNA OVBETLITEV GARAJA

FASADNI PAS
M 1:25

