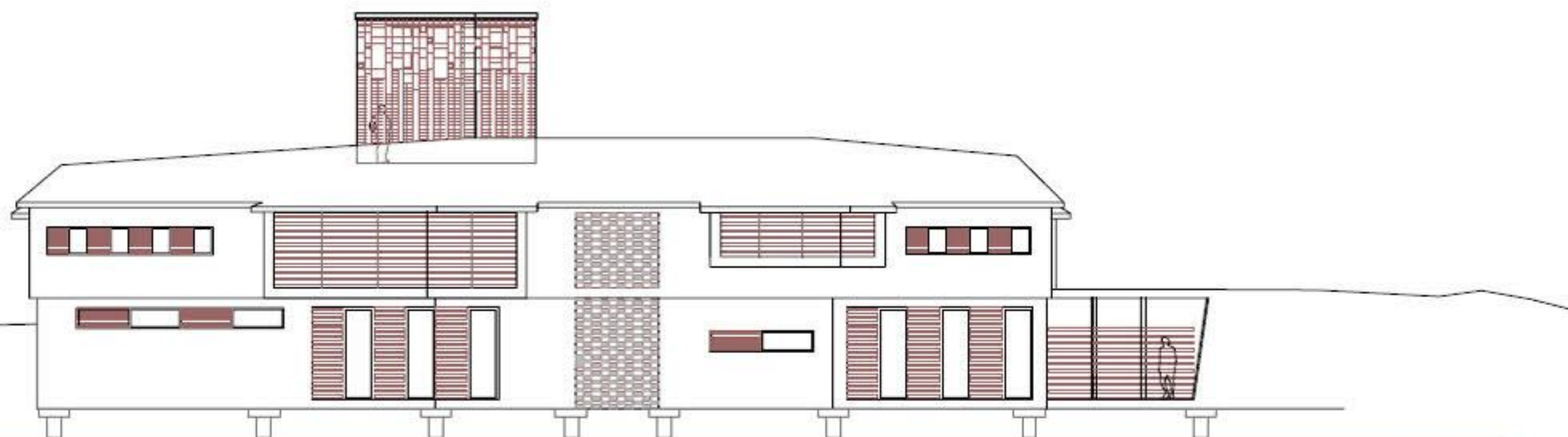
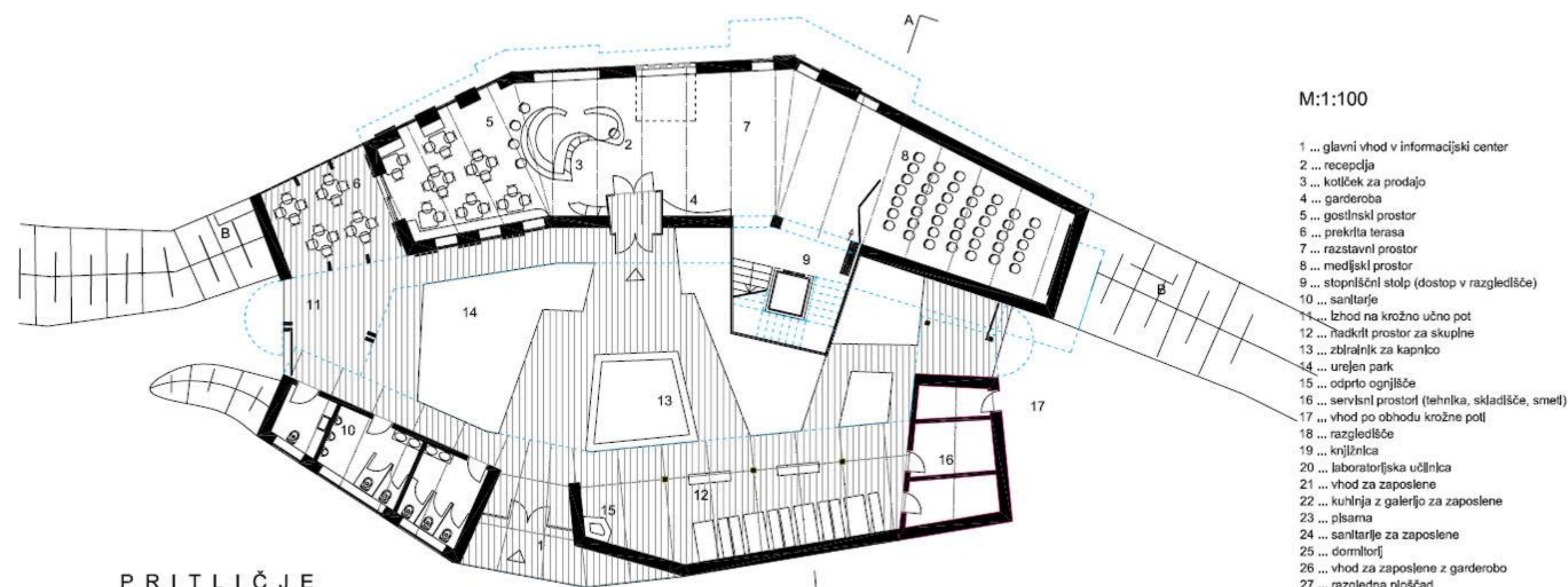


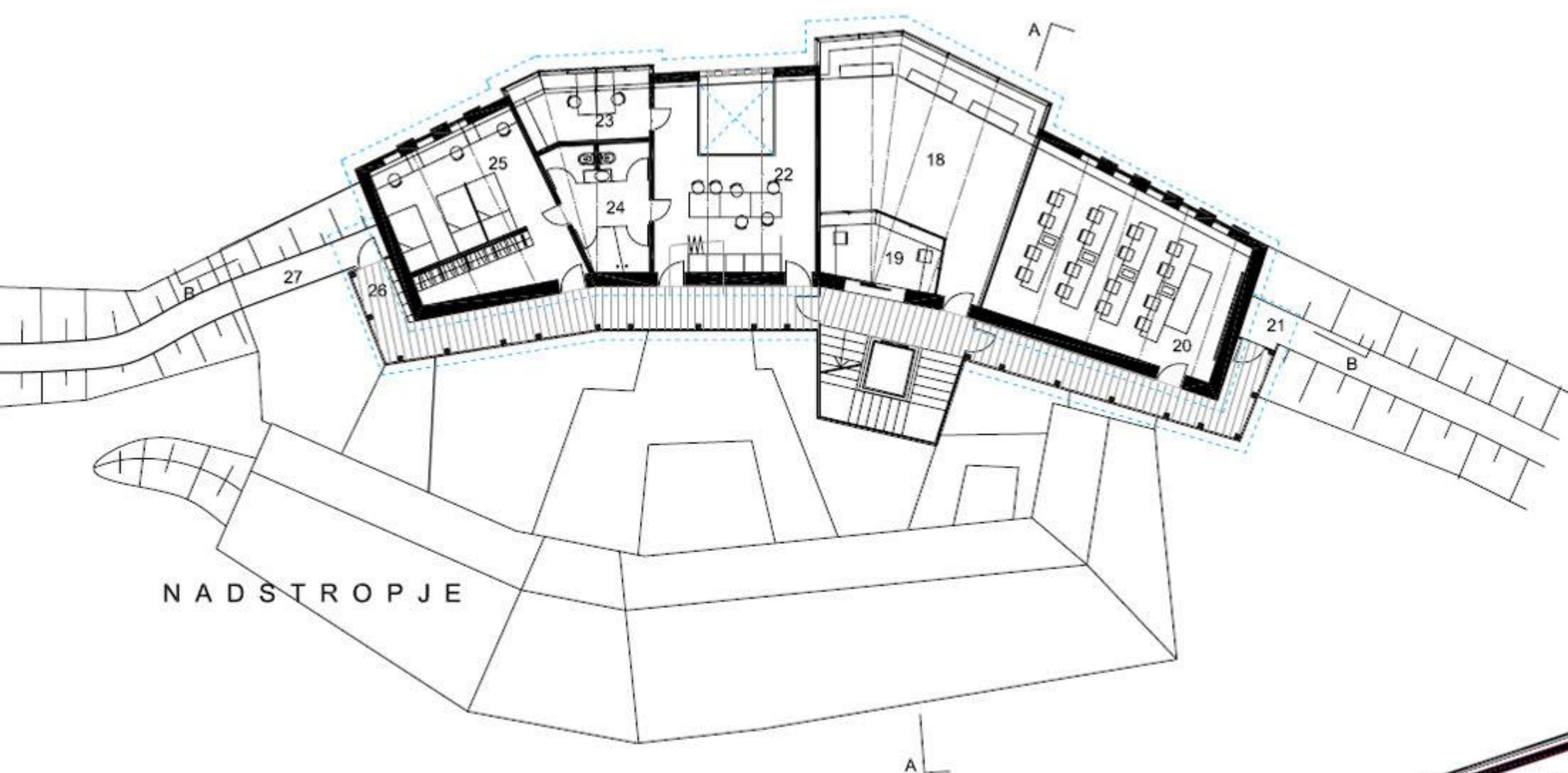
POGLED VHODNE FASADE INFORMACIJSKEGA CENTRA



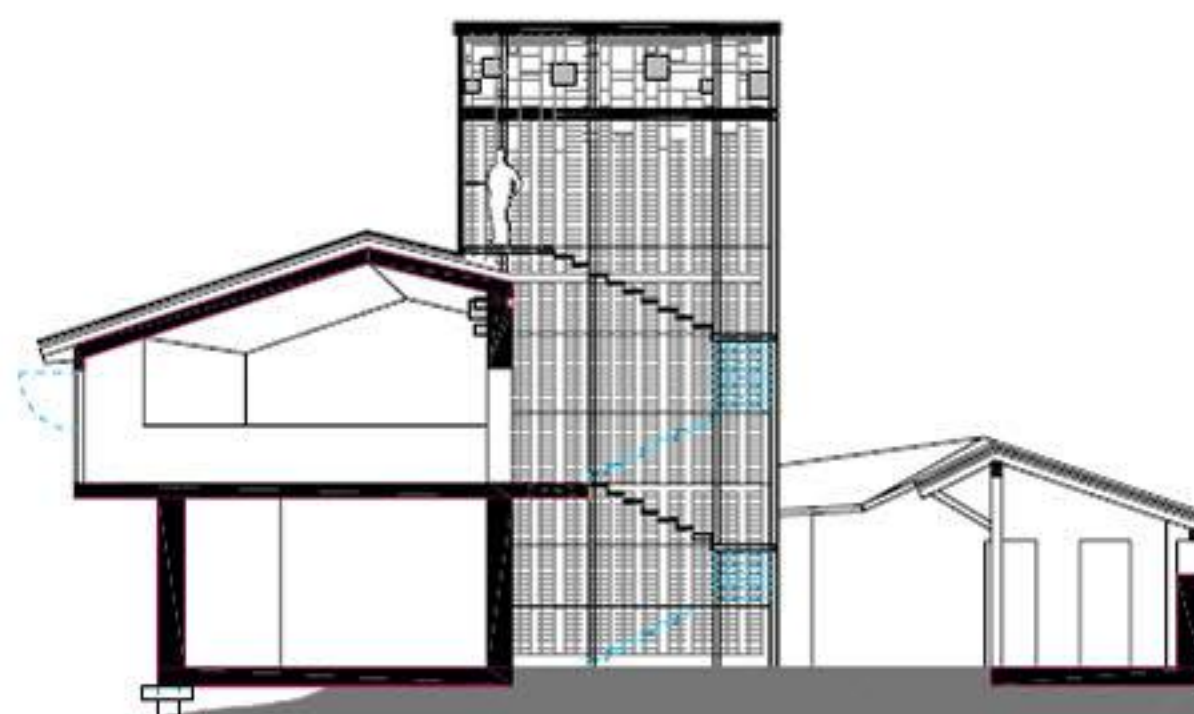
POGLED ZAHODNE FASADE INFORMACIJSKEGA CENTRA

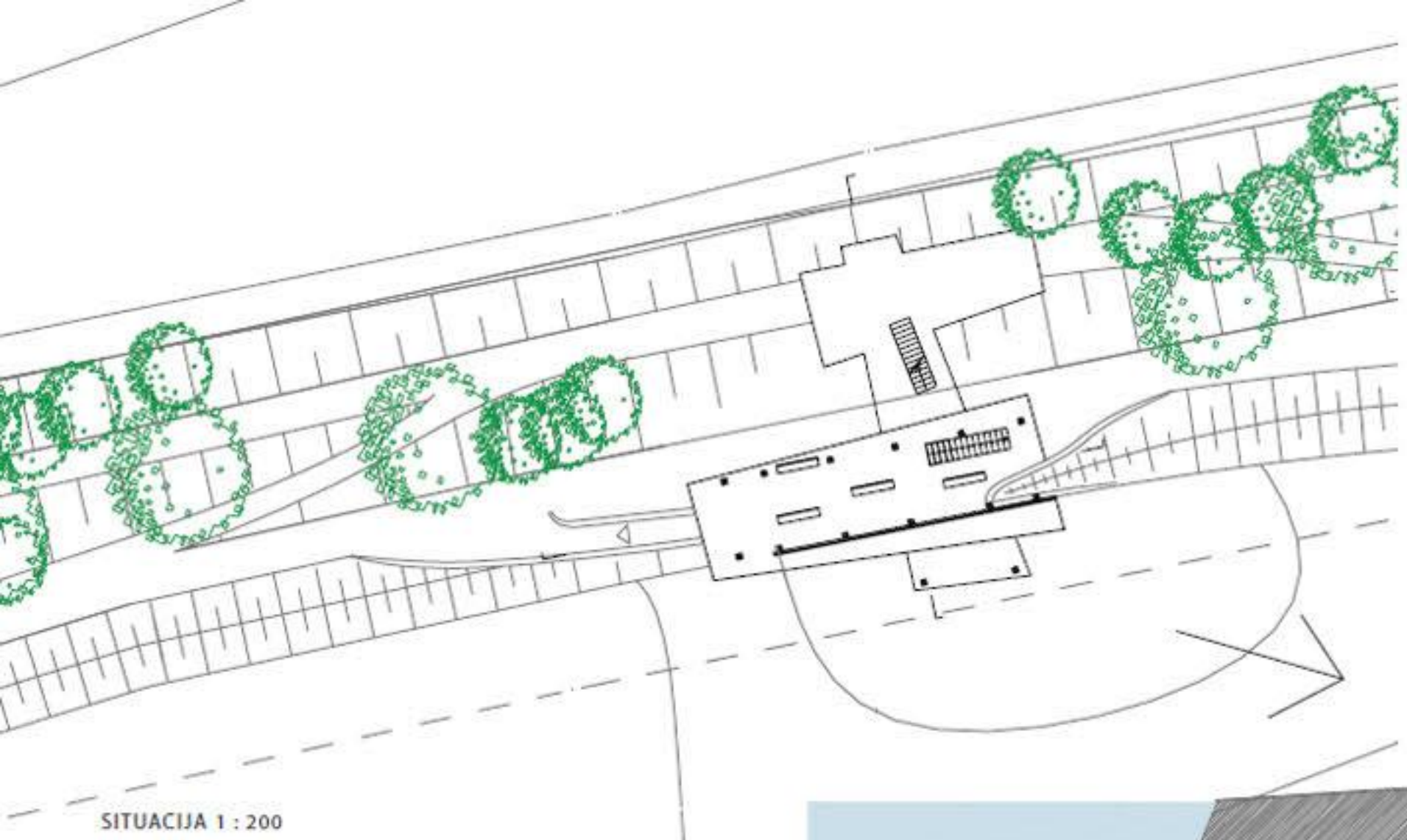


PRITLIČJE

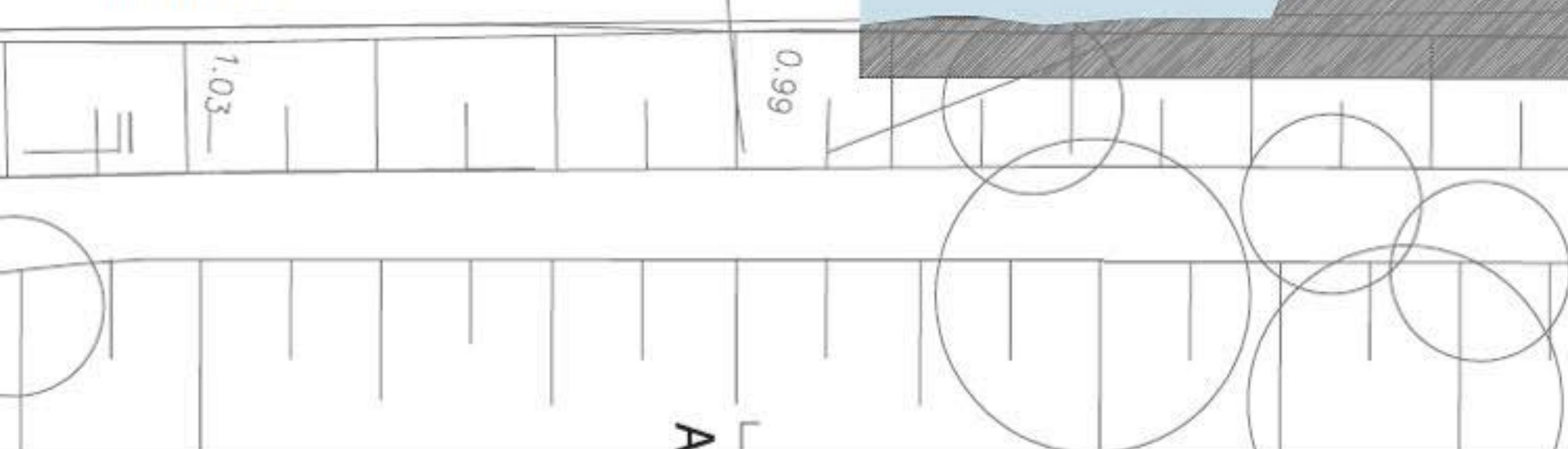


NADSTROPJE

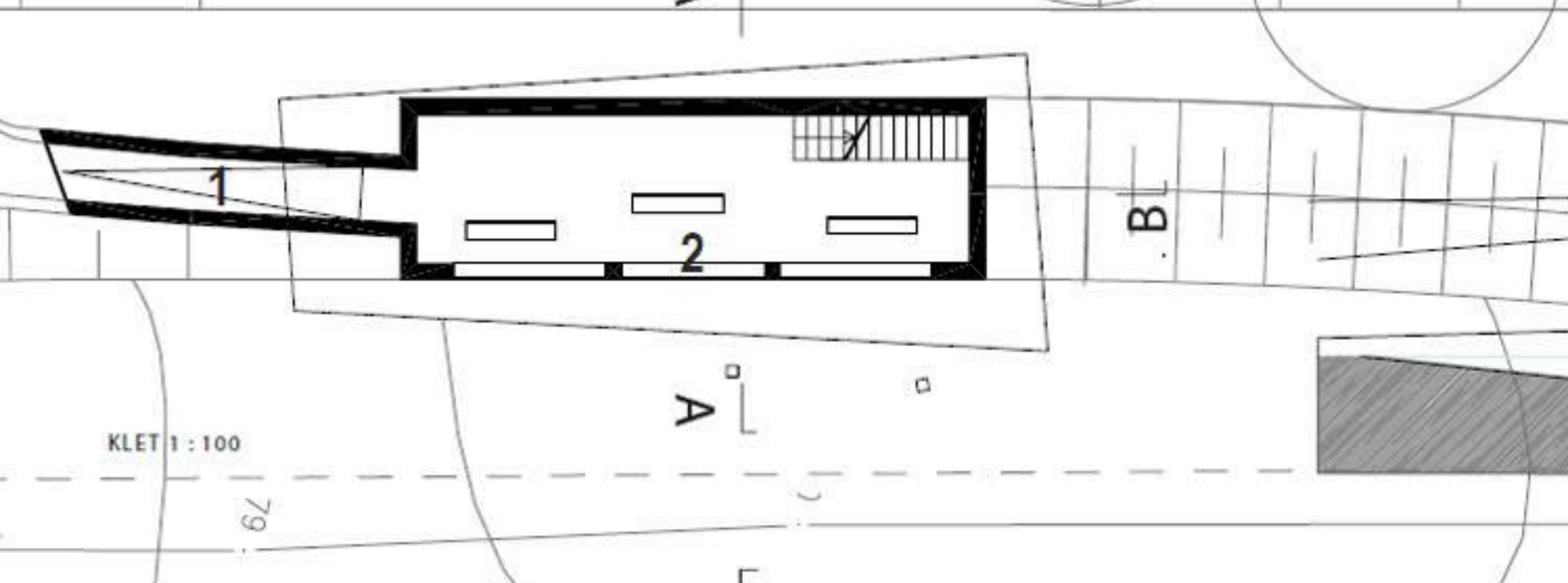




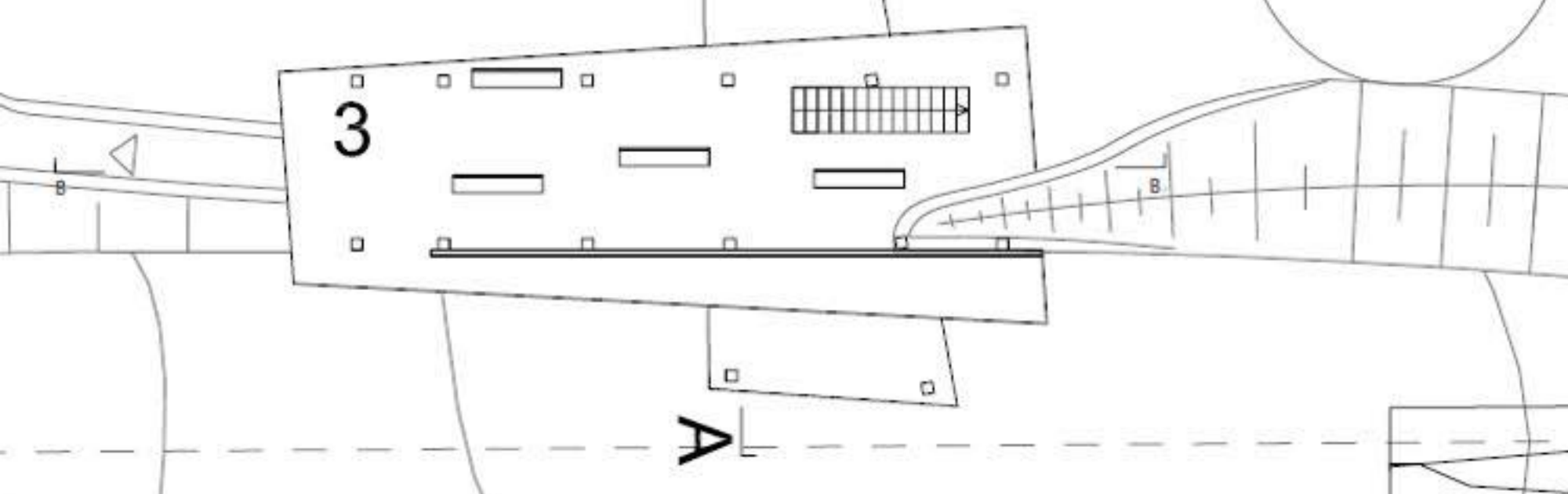
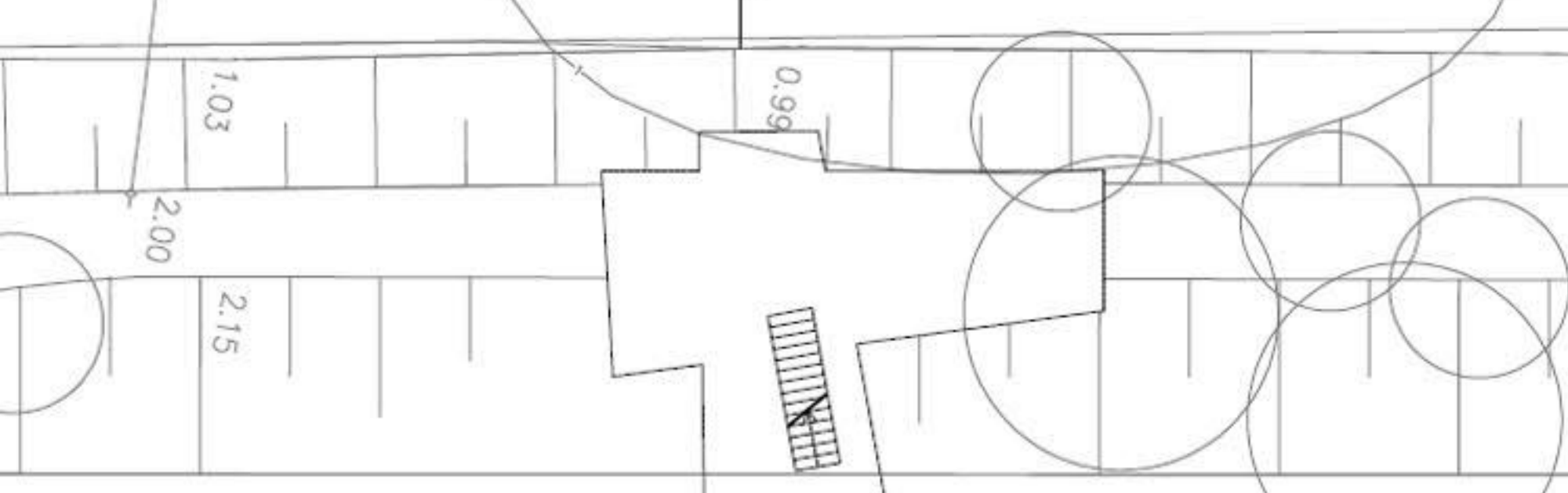
SITUACIJA 1 : 200



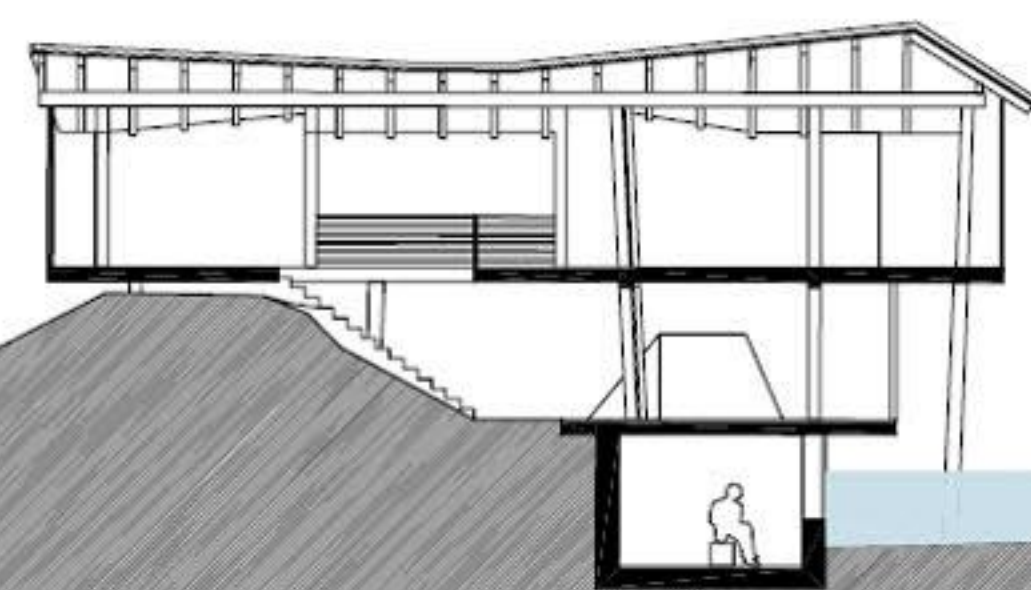
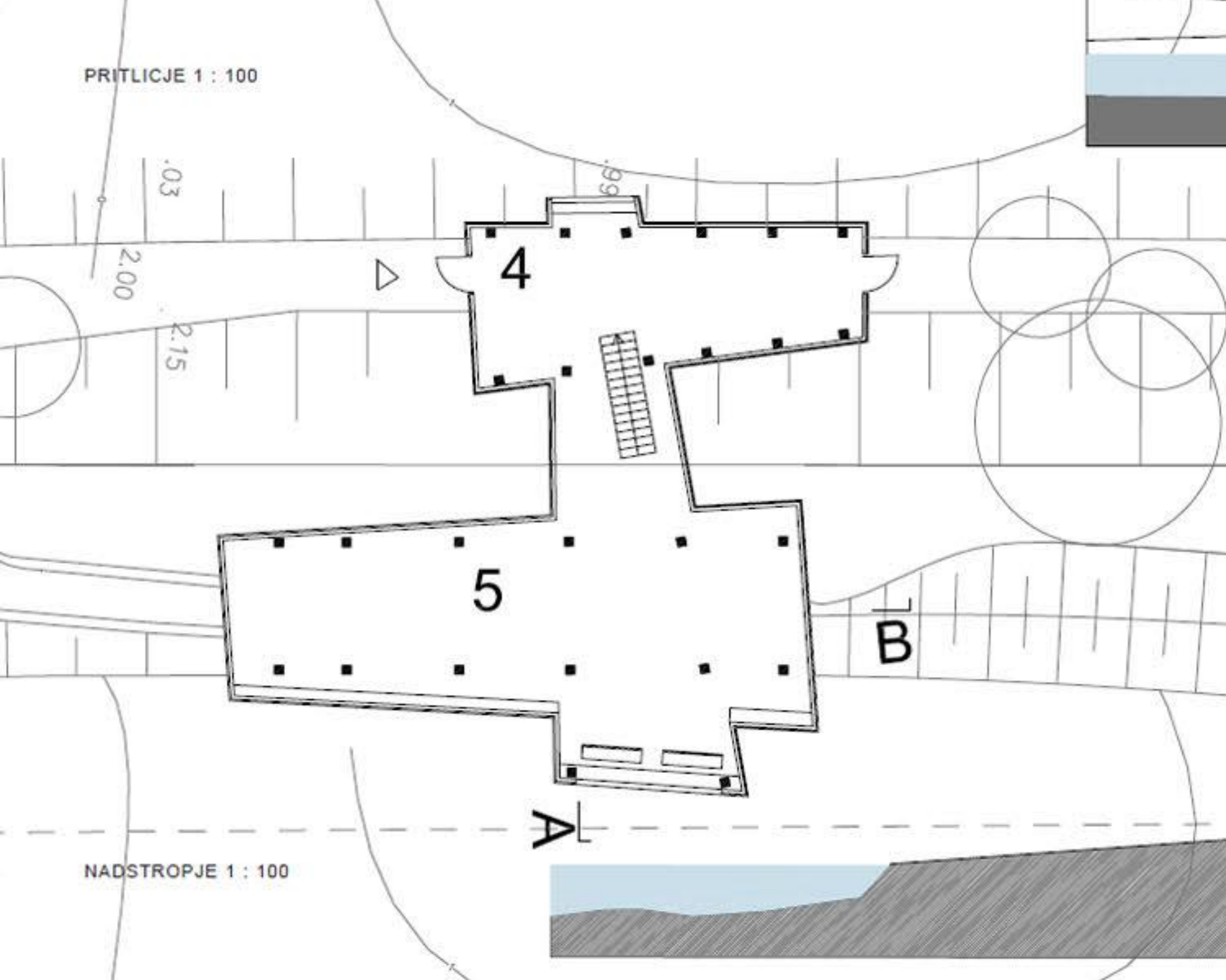
KLET 1 : 100



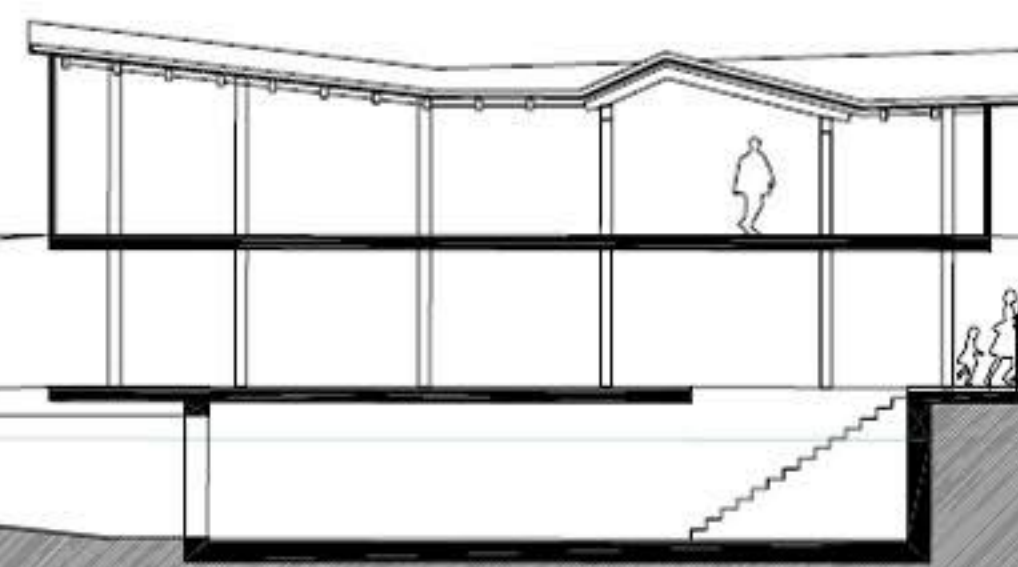
PRITLICJE 1 : 100



NADSTROPJE 1 : 100

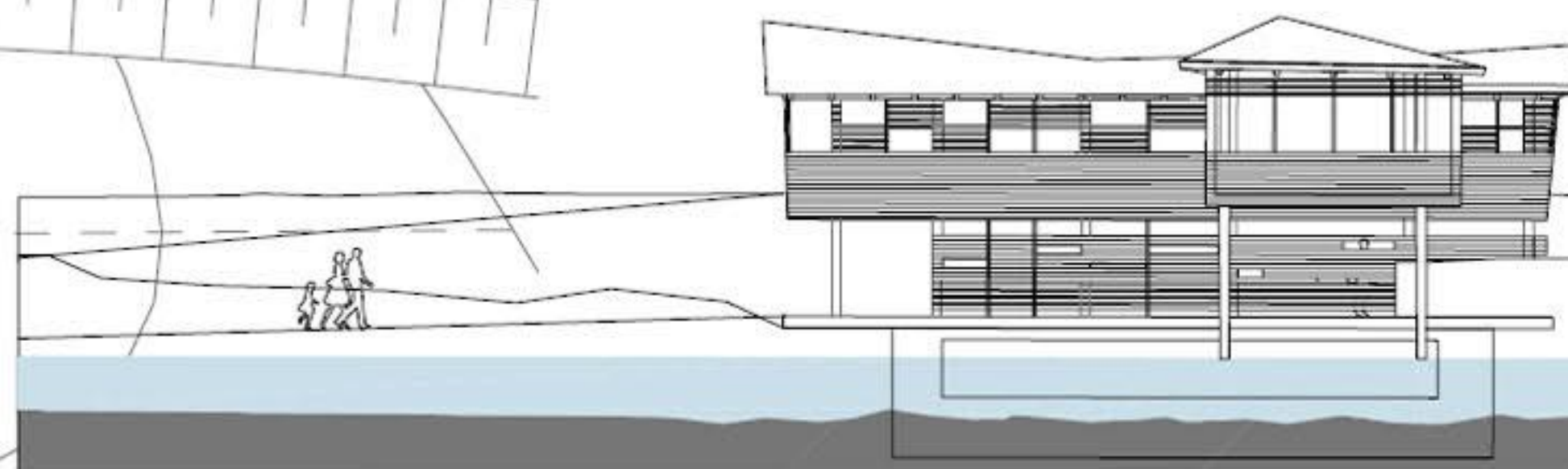


PREREZ A-A 1 : 100

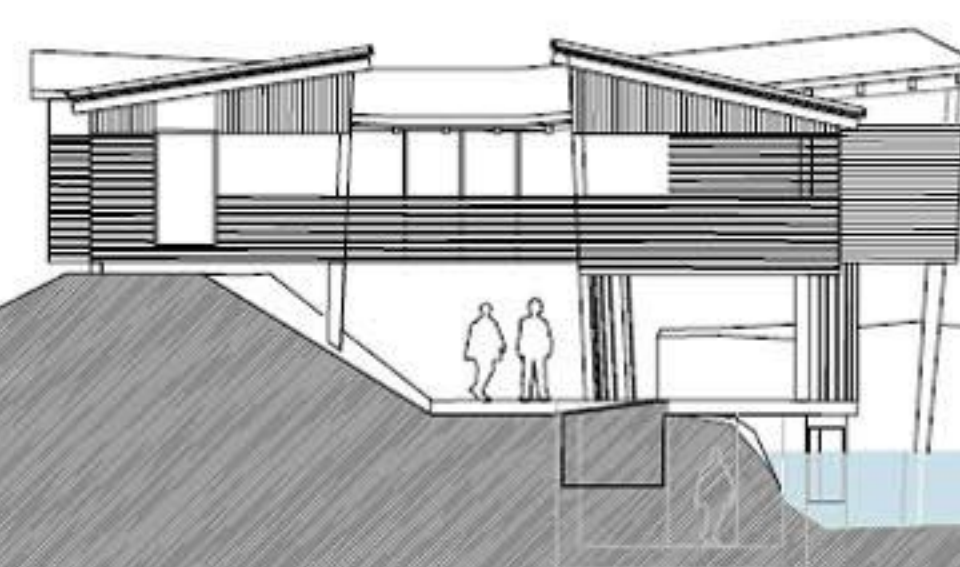


PREREZ B-B 1 : 100

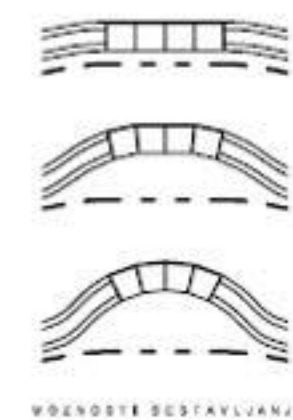
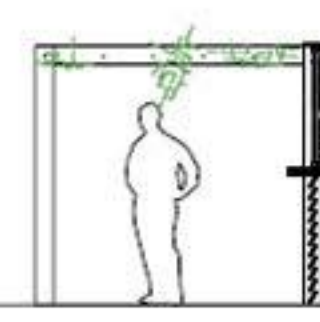
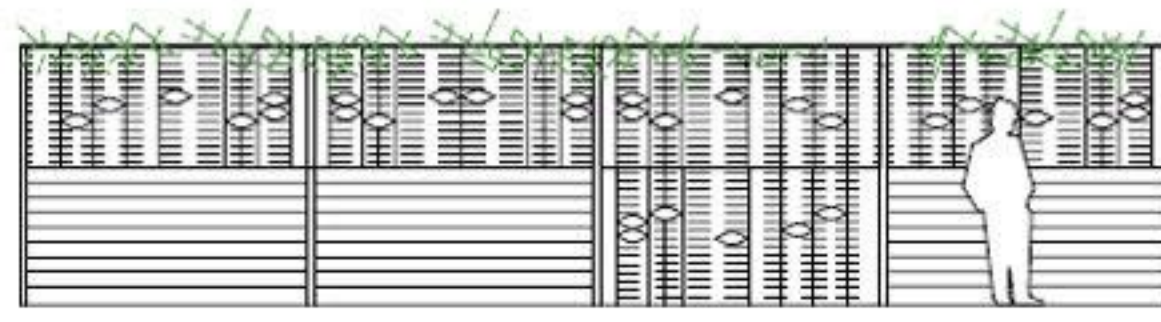
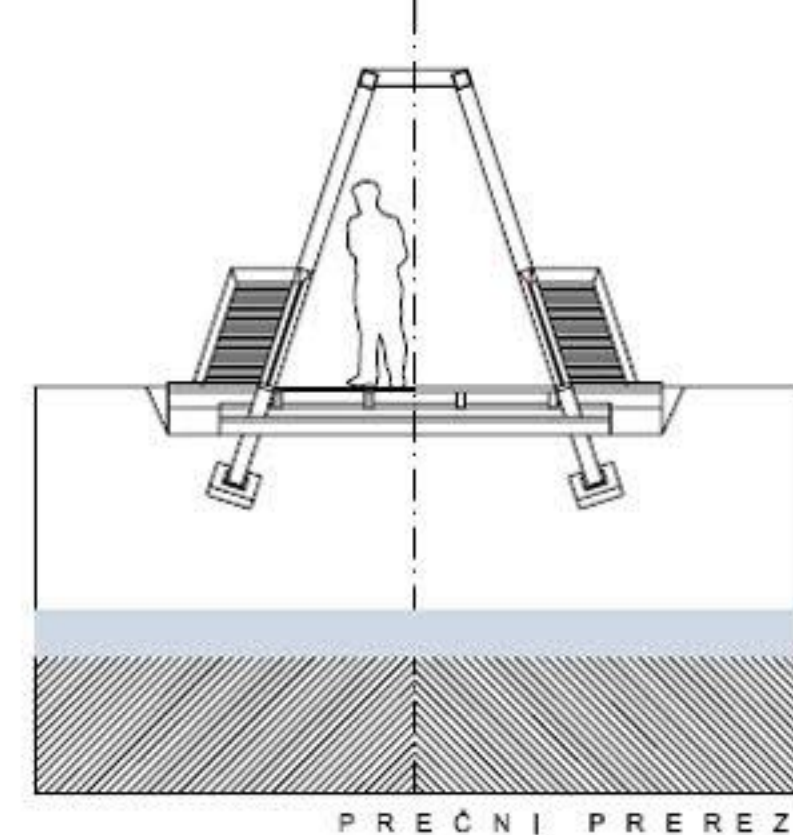
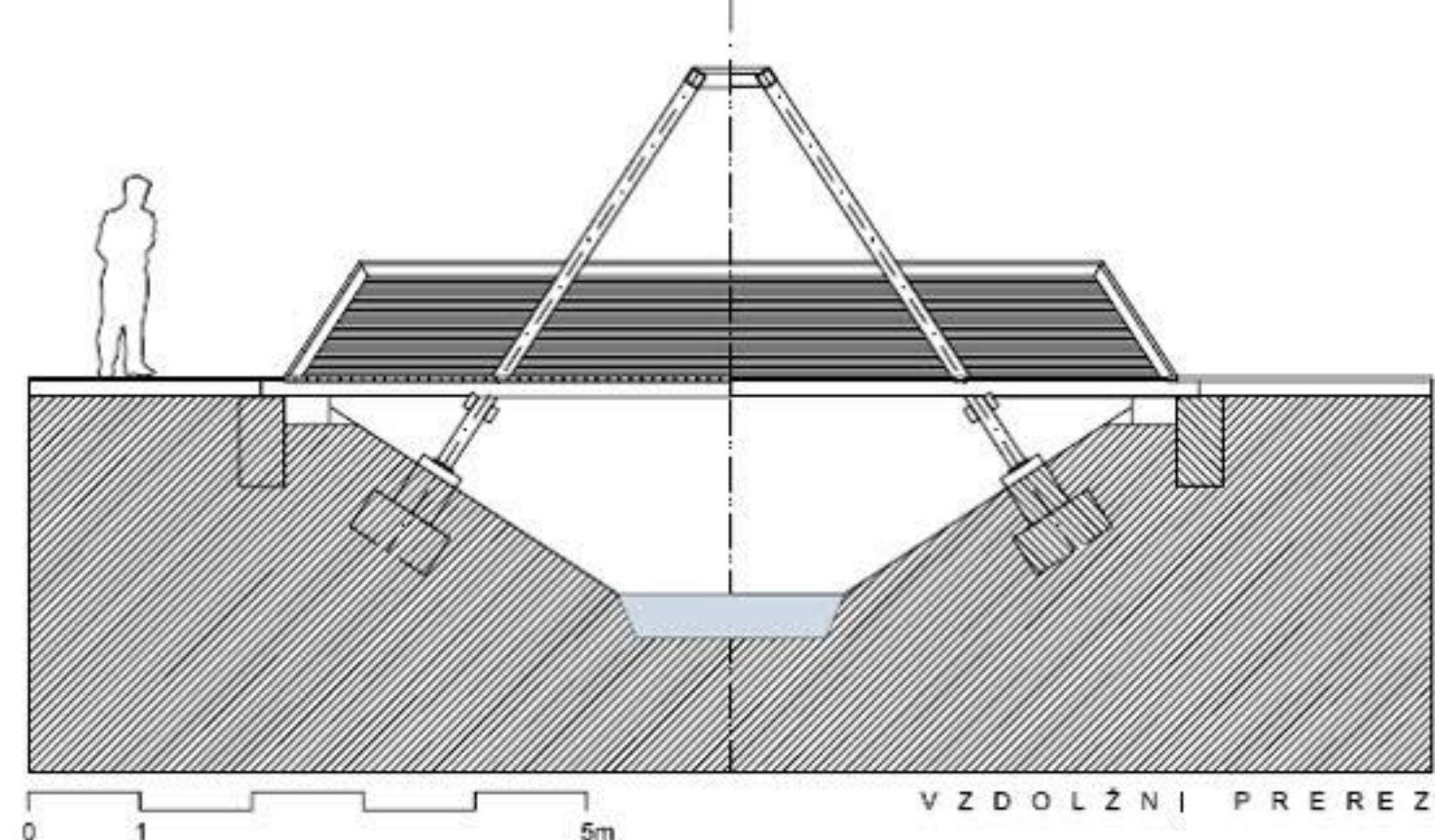
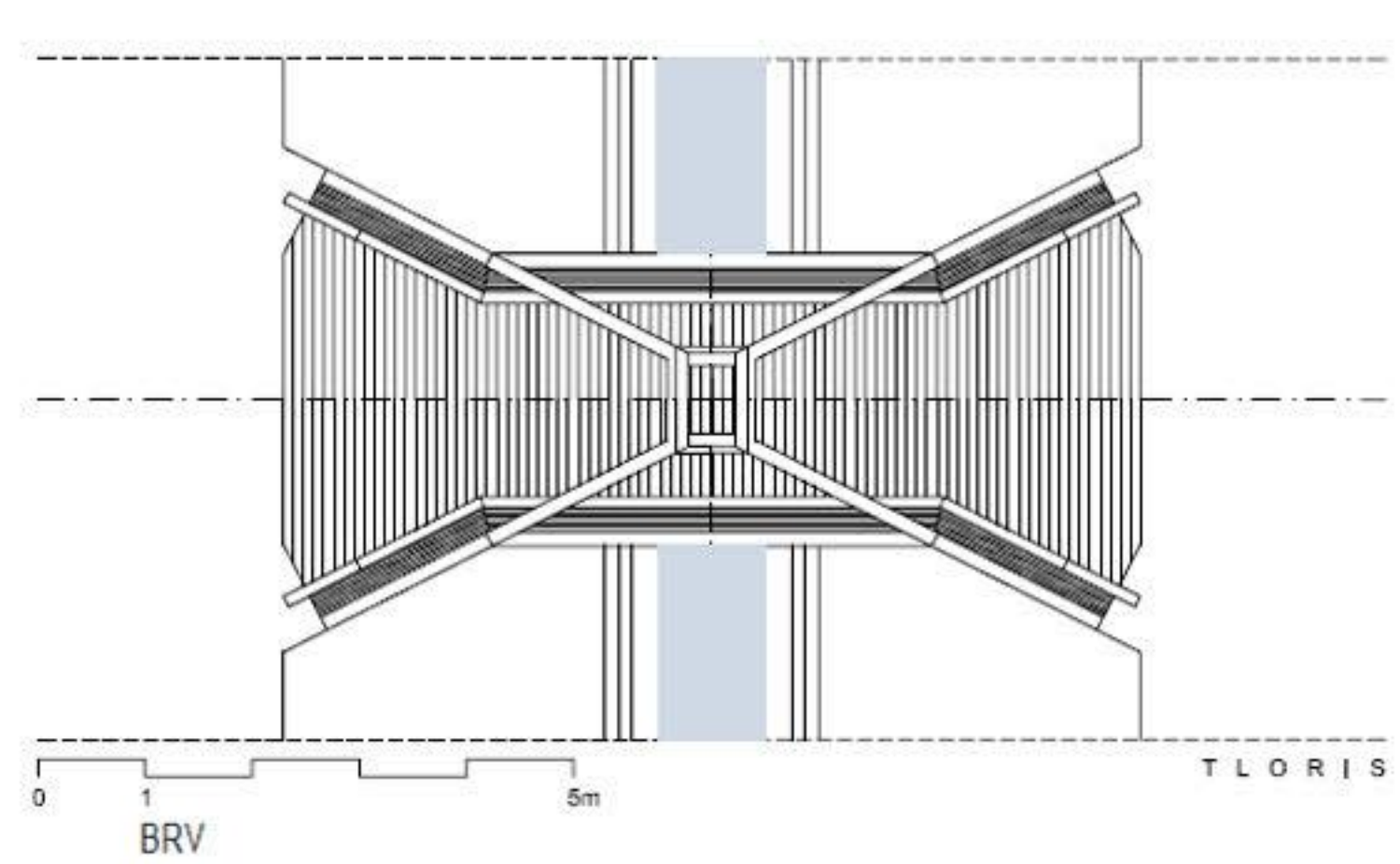
- 1 ... klančina v klet
- 2 ... opazovanje podvodnega življenja
- 3 ... pritličje, razstveni prostor in opazovališče
- 4 ... vhod v nadstropje
- 5 ... razstveni prostor v nadstropju



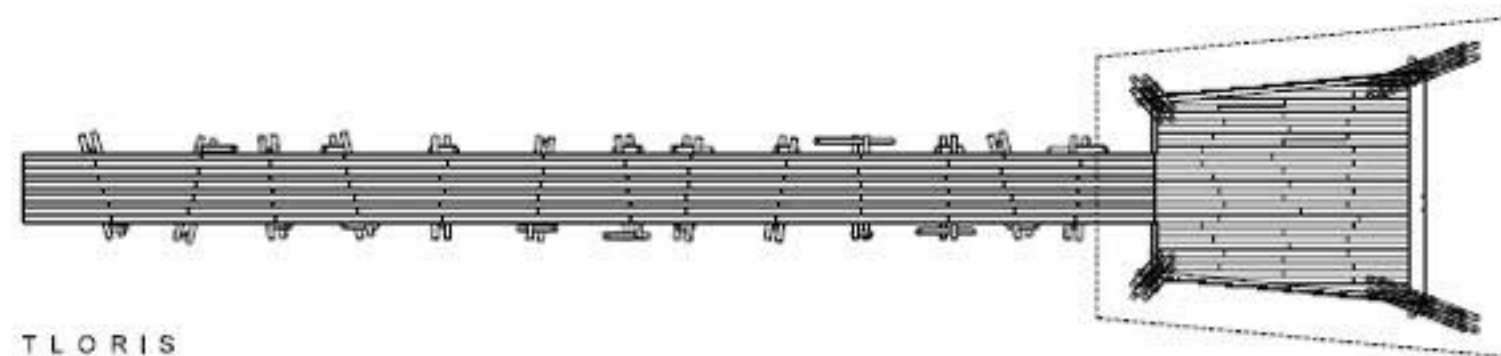
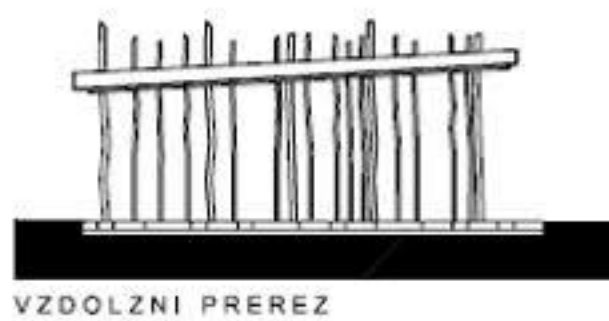
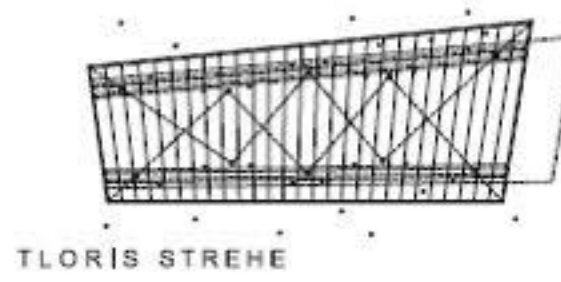
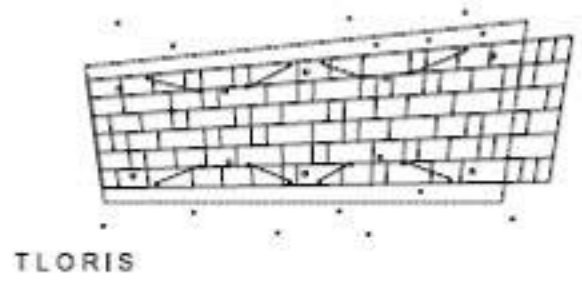
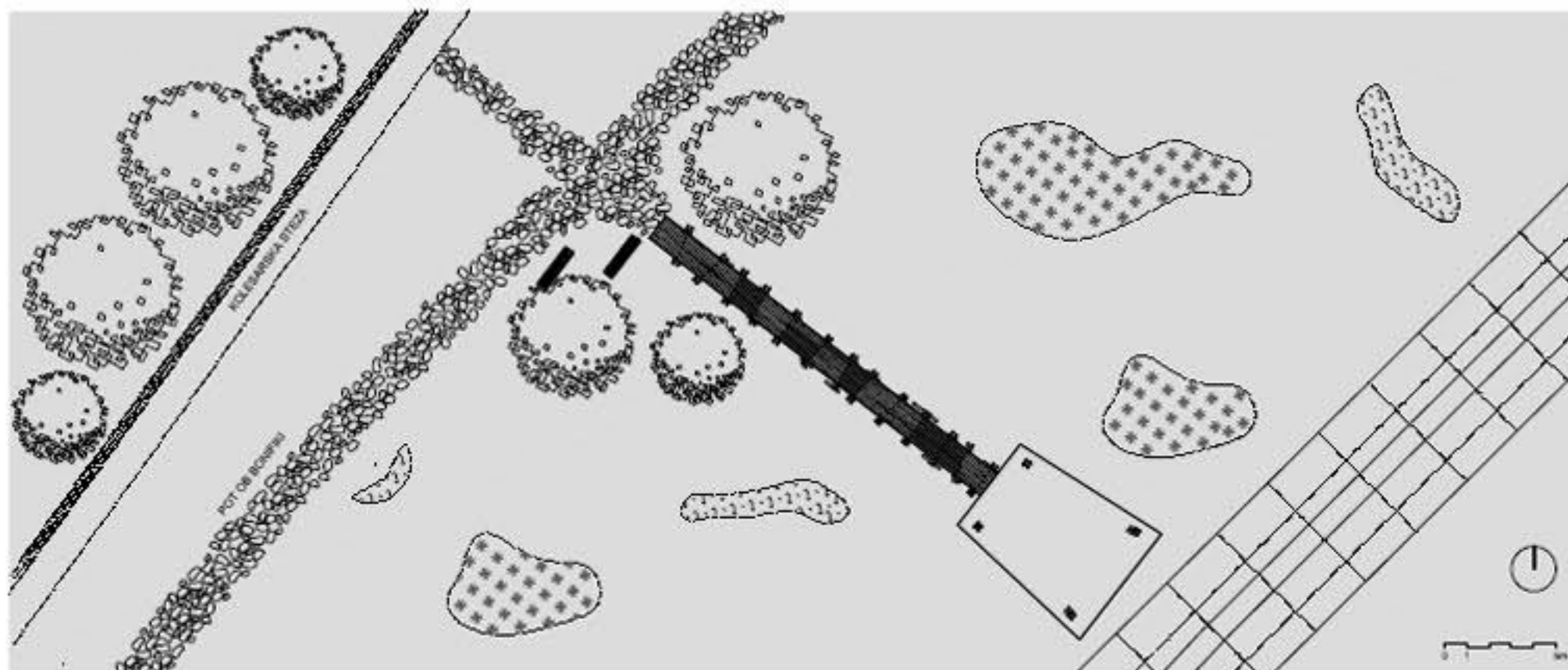
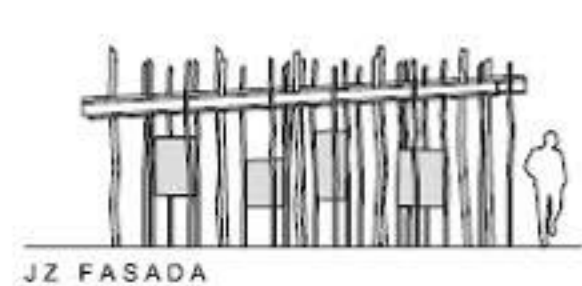
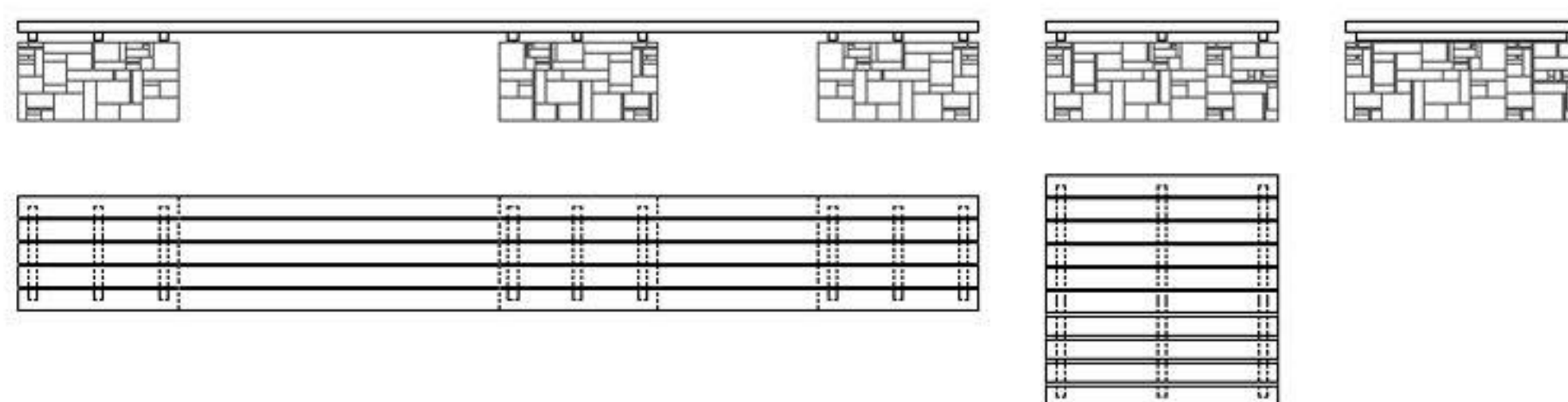
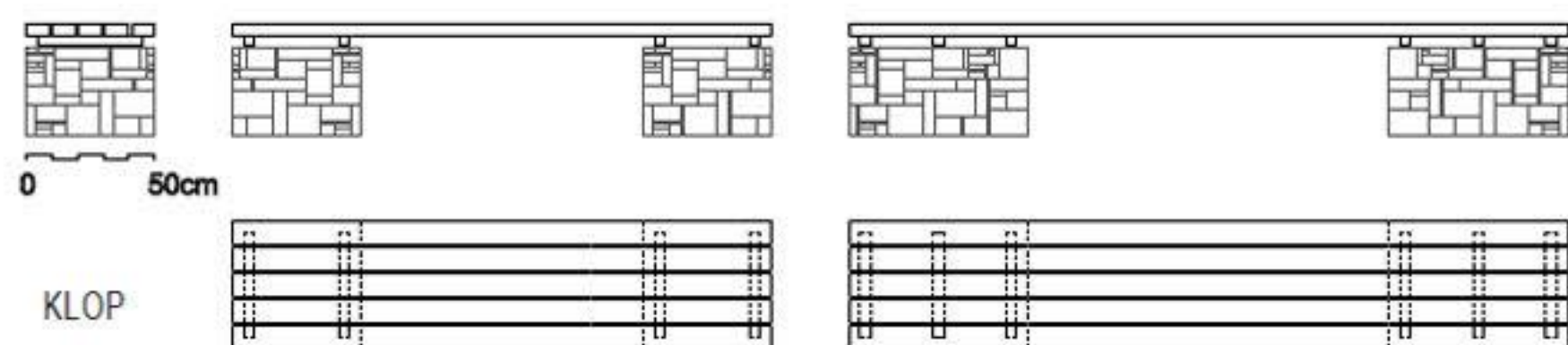
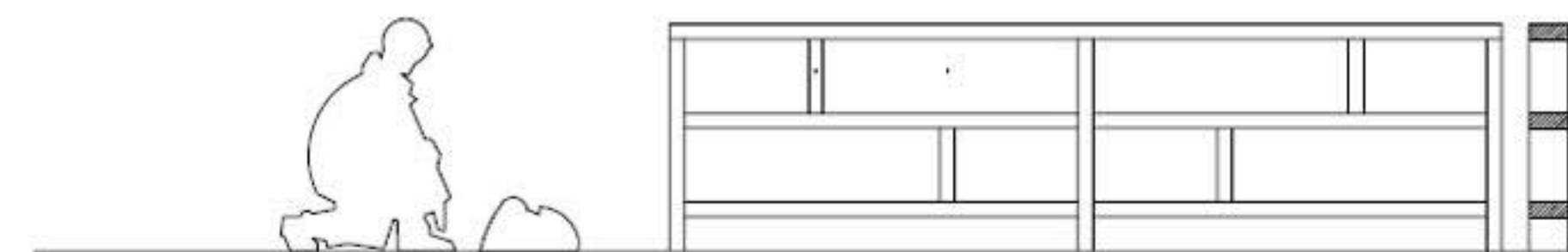
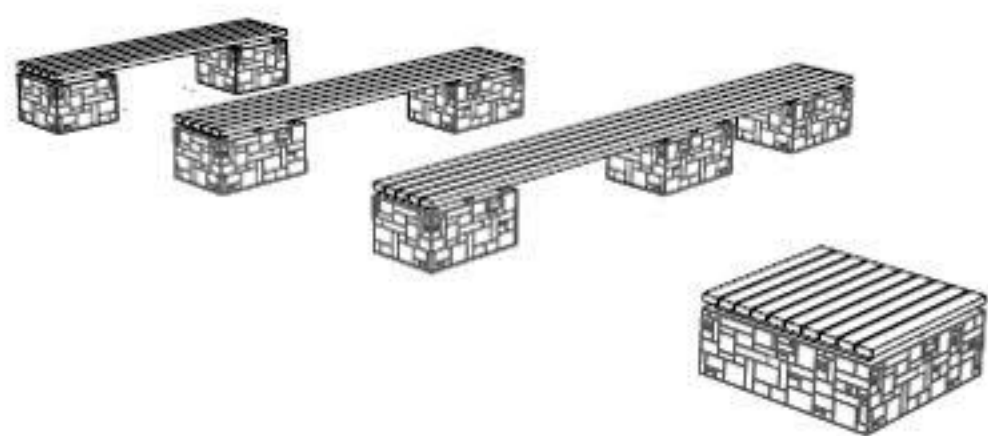
FASADA VZHOD - 1 : 100



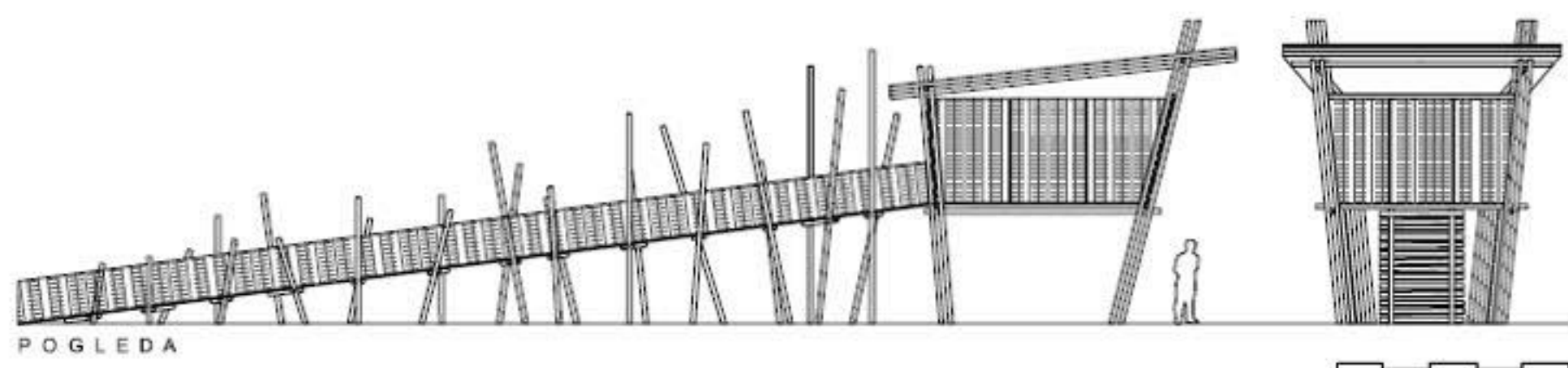
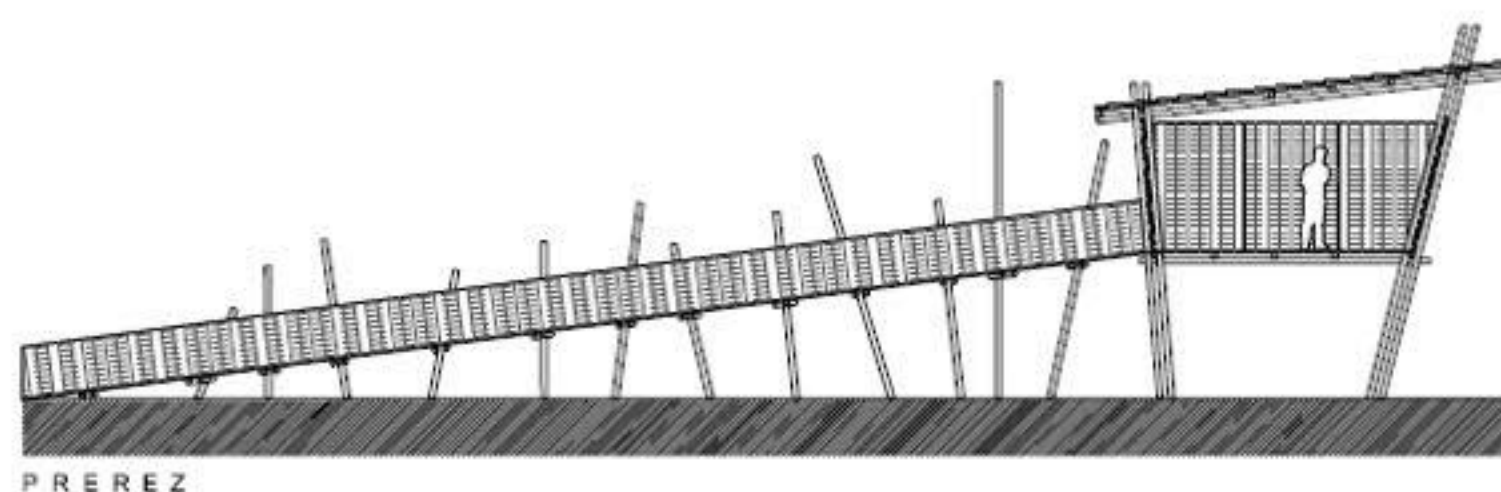
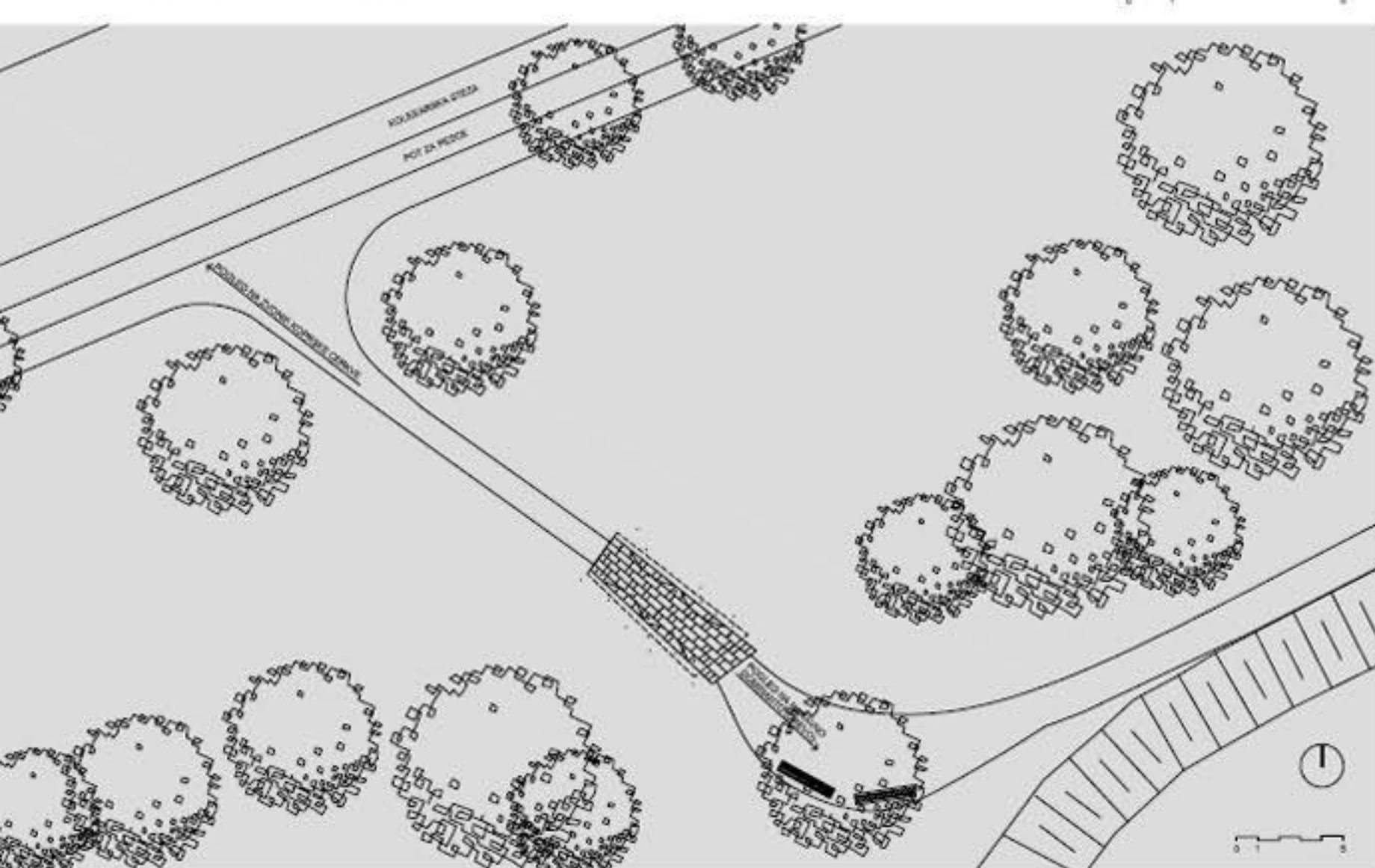
FASADA - JUZNA 1 : 100

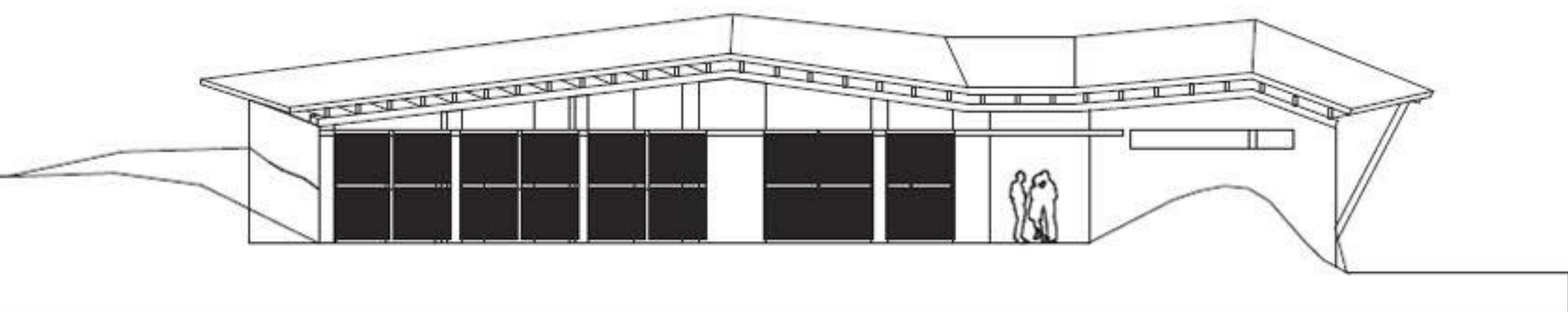
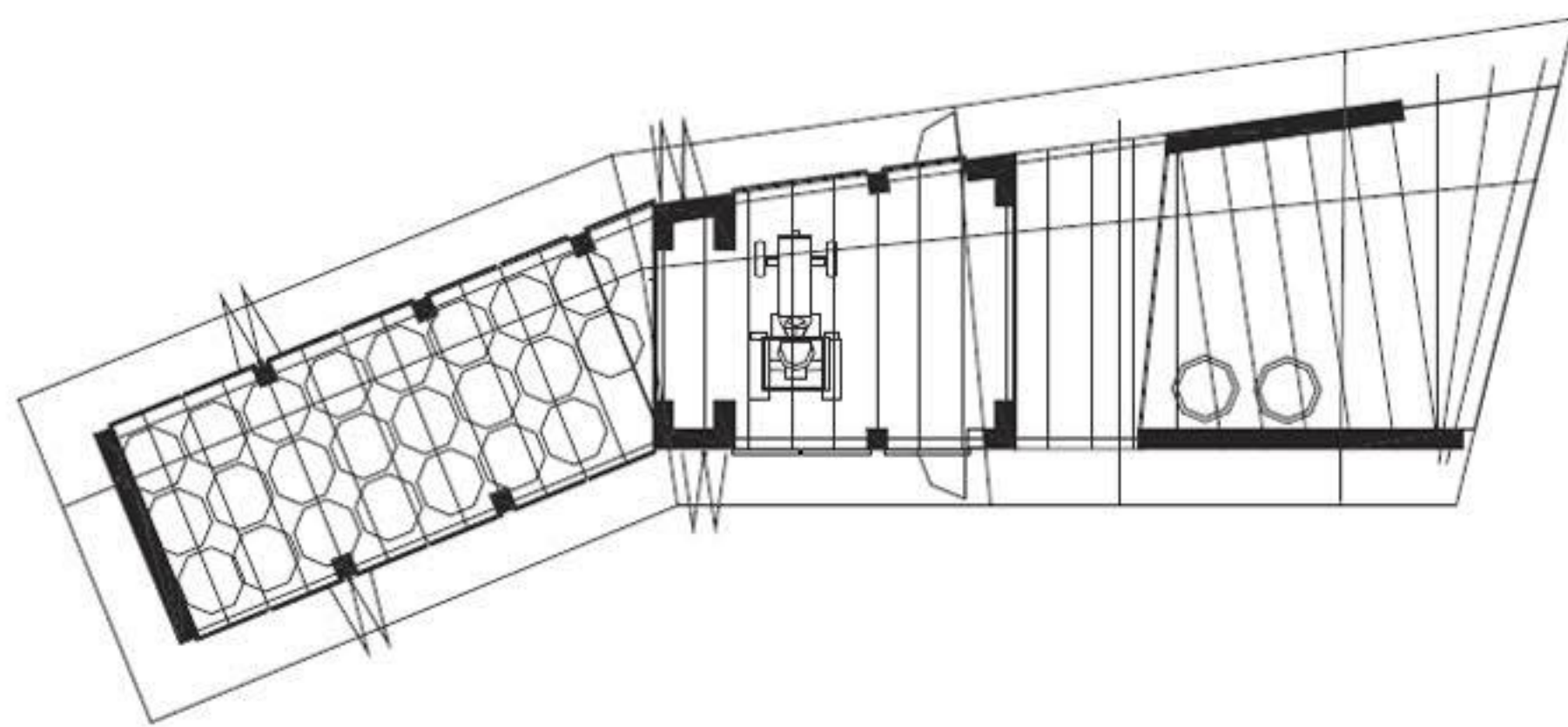
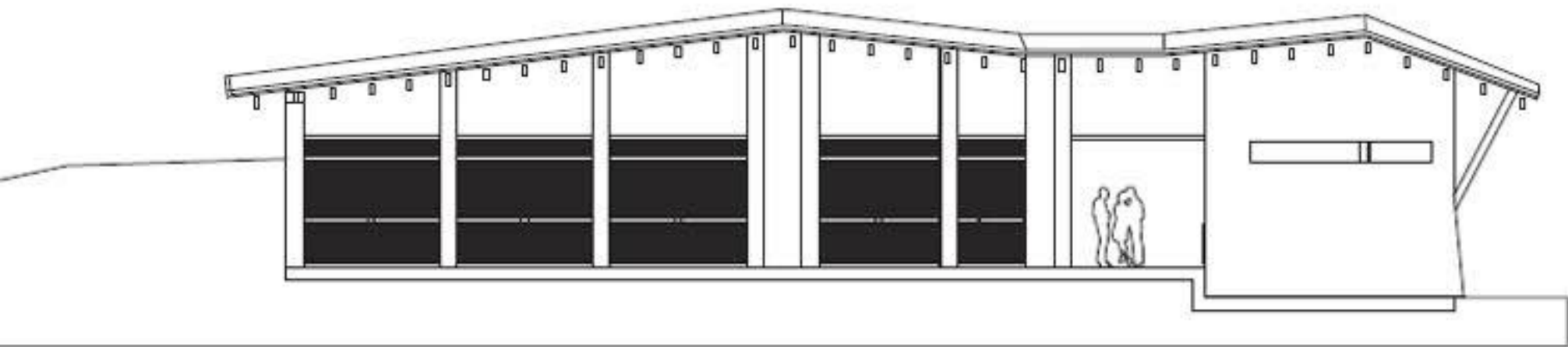
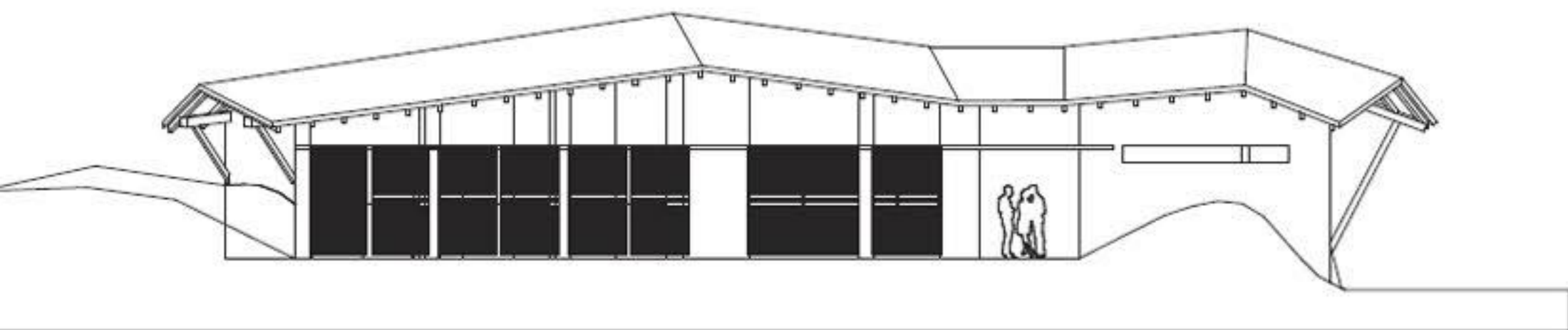


TIPSKO OPAZOVALISCE

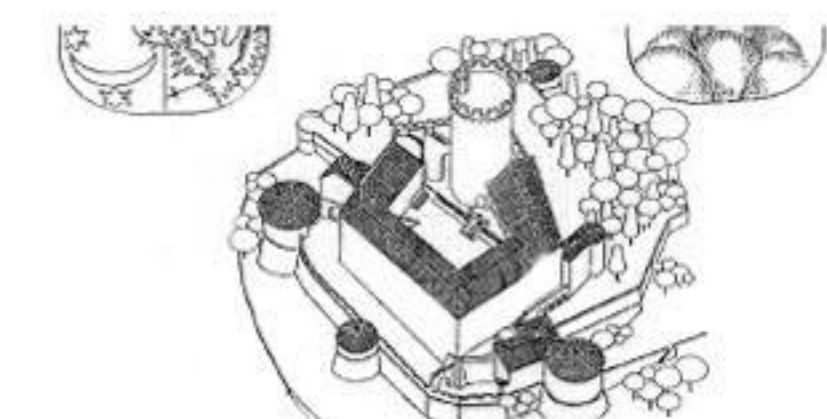
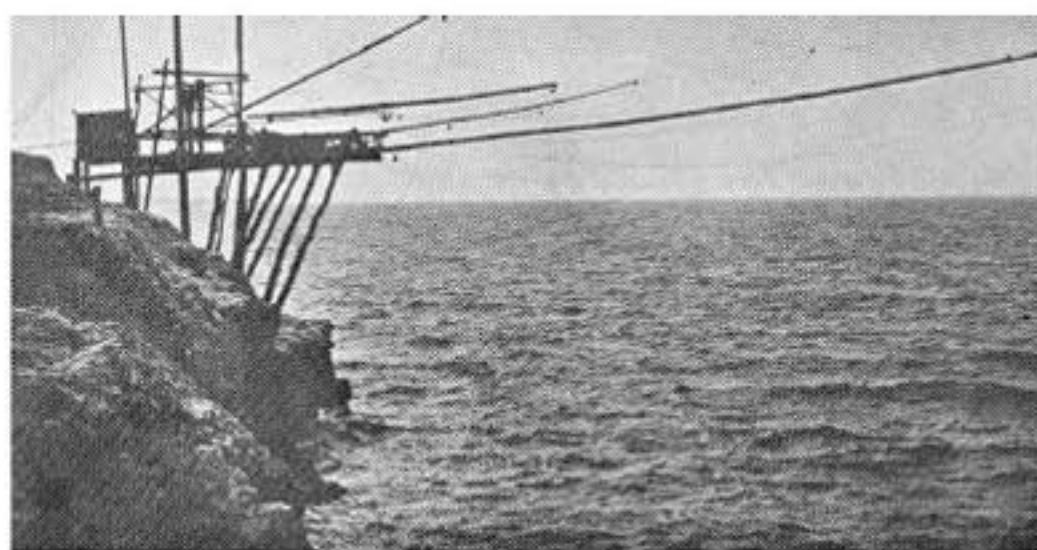


VSTOPNI OBJEKT IZ ANKARANSKE VPADNICE

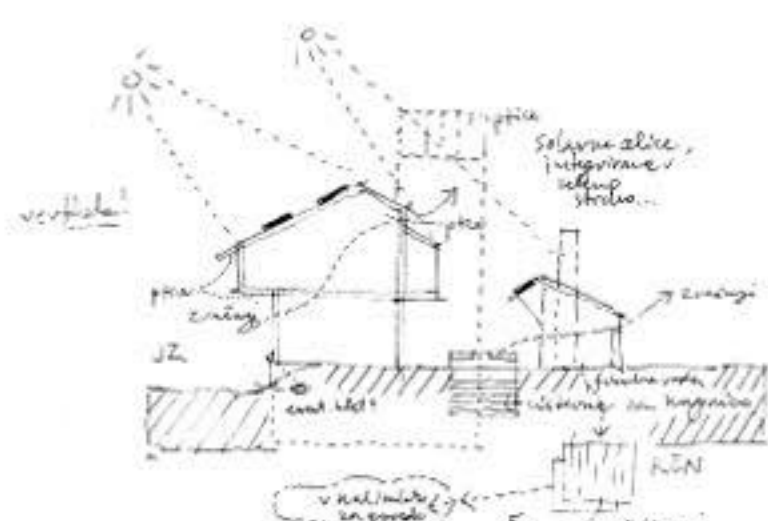




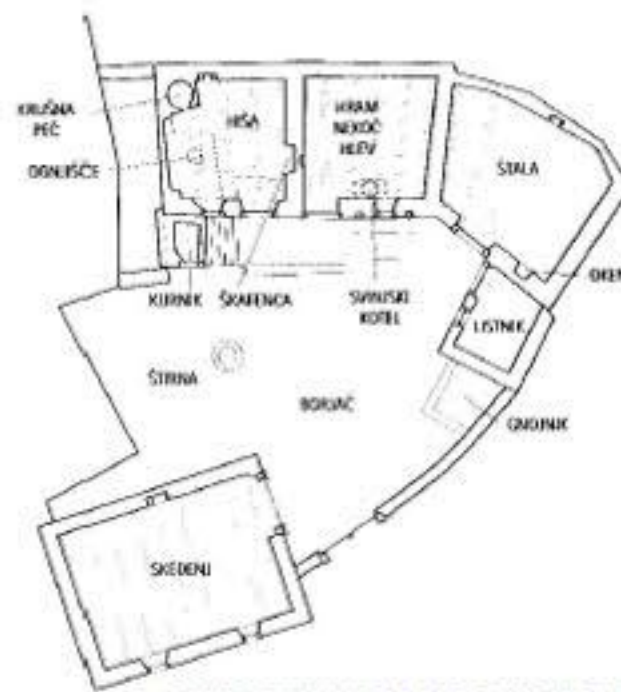
HLEV S SKLADISCEM IN GARAZO 1:100



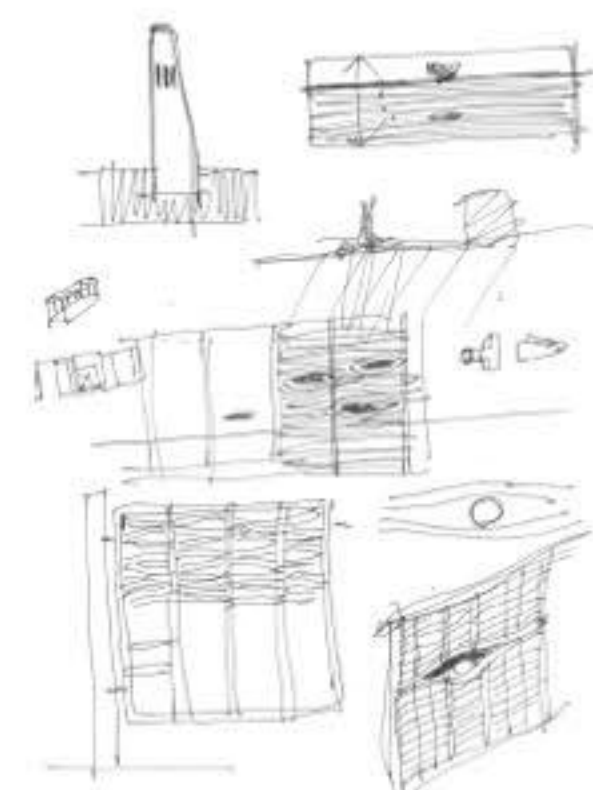
Grad Ribemberk - aksonometrična študija rekonstrukcije nekdanje grajske celote



EKOLOSKA SCHEMA INFO CENTRA



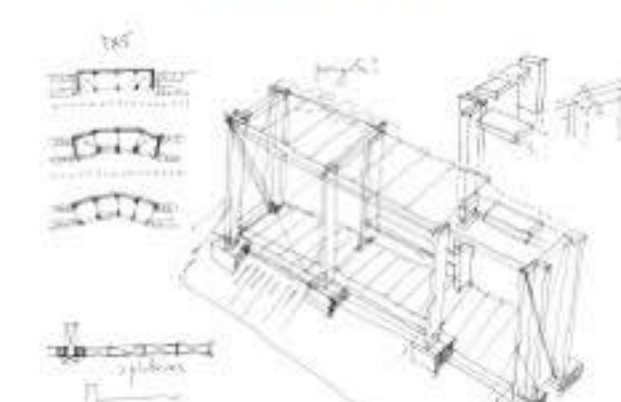
PRIMER ZNACILNEGA NOTRANJEGA DVORISCA



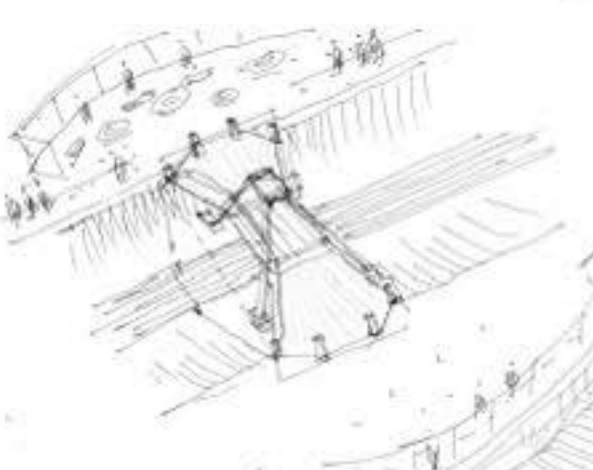
PLETIVO



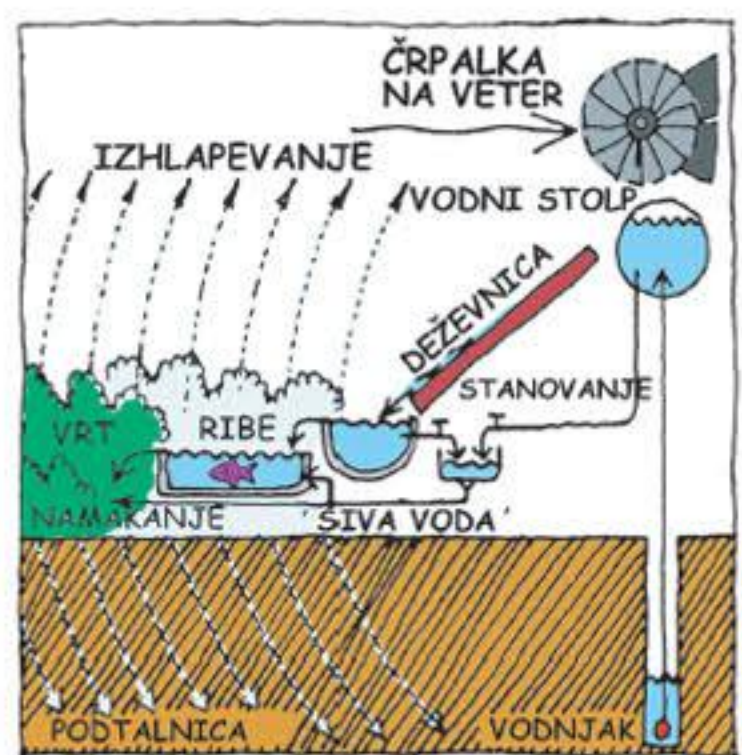
OPAZOVALNICA POD ANKARANSKO VPADNICO



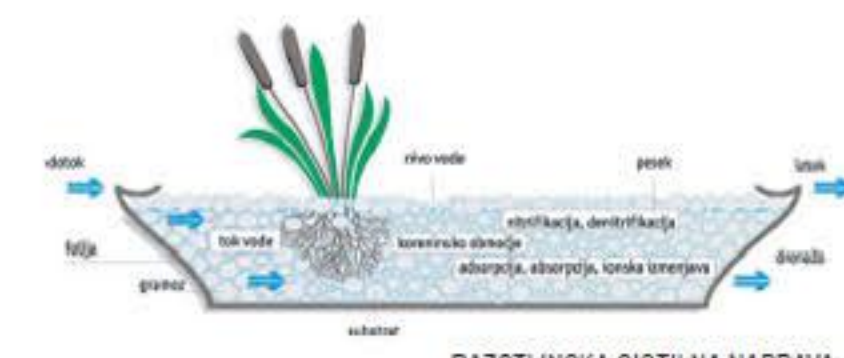
KONSTRUKCIJA (PARAVANI, ZASTORI)



POGLED NA BRV



KROGOTOK VODE



- LEGENDA
- 1 RISA
 - 2 VINSKA KLET
 - 3 KAMBRA / SHRAMBA
 - 4 KLANICA
 - 5 SKLEDNIJ
 - 6 VOLARSKA DELAVNICA
 - 7 STALA
 - 8 LUSTNIK
 - 9 HLEV ZA PRAŠICE
 - 10 STRANISCE
 - 11 OŠOJNIK
 - 12 OBINA
 - 13 STRINA
 - 14 APNICA
 - 15 LONESICE
 - 16 BOJLJAC

stran 110, Renej S. in Lah L., Kraska hiša in arhitektura kraska, Libris 2004



OPAZOVALNICA POD ANKARANSKO VPADNICO



VSTOPNI OBJEKT IZ ANKARANSKE VPADNICE

