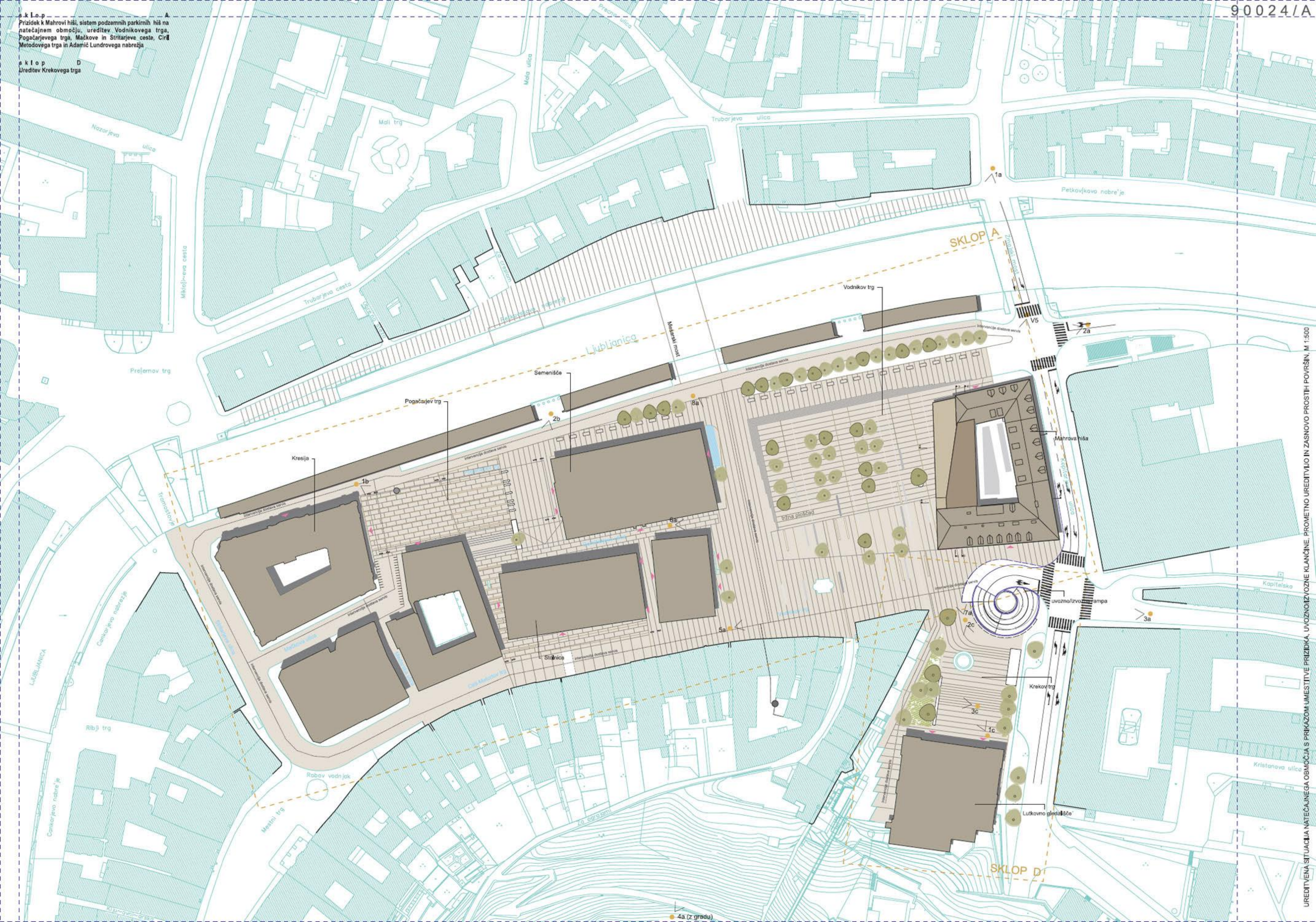


Prizidek k Mahrovi hiši, sistem podzemnih parkirnih hiš na natečajnem območju, ureditev Vodnikovega trga, Pogačarjevega trga, Mačkove in Stritarjeve ceste, Ciril Metodovega trga in Adamič Lundrovega nabrežja

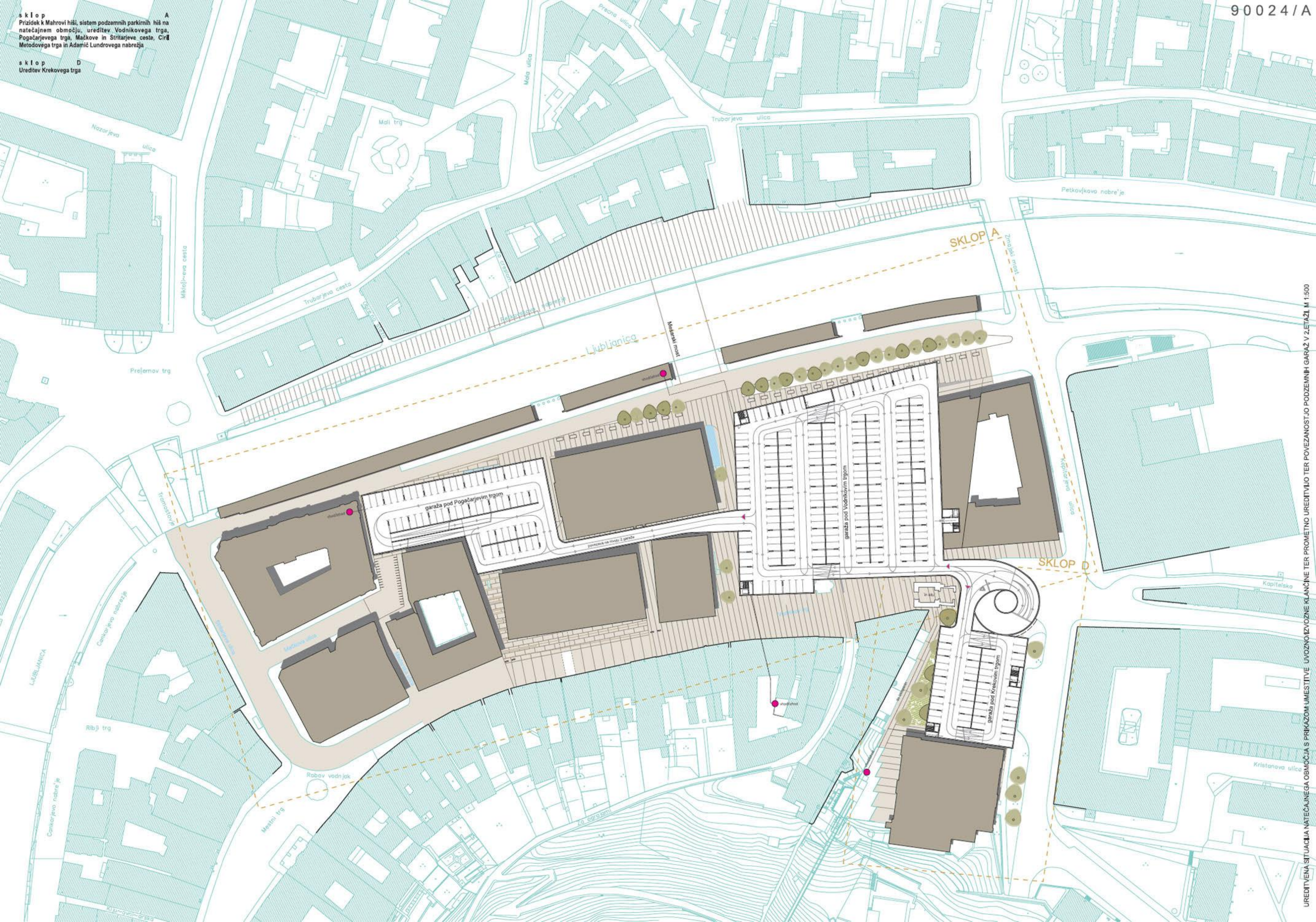
SKLOP D
Ureditev Krekovega trga



4a (z gradu)

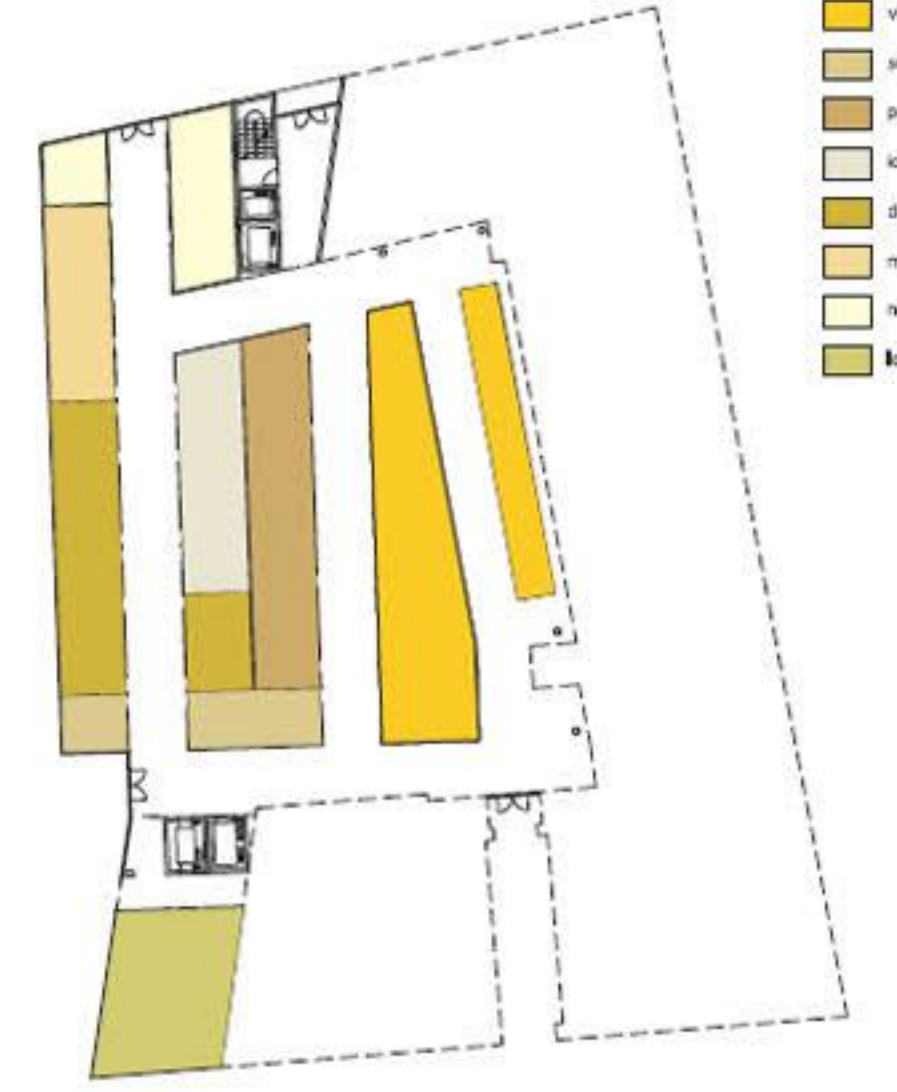
sklop A
Prizidek Mahrovi hiši, sistem podzemnih parkirnih hiš na natečajnem območju, ureditev Vodnikovega trga, Pogačarjevega trga, Mačkove in Stritarjeve ceste, Ciril Metodovega trga in Adamič Lundrovega nabrežja

sklop D
Ureditev Krekovega trga

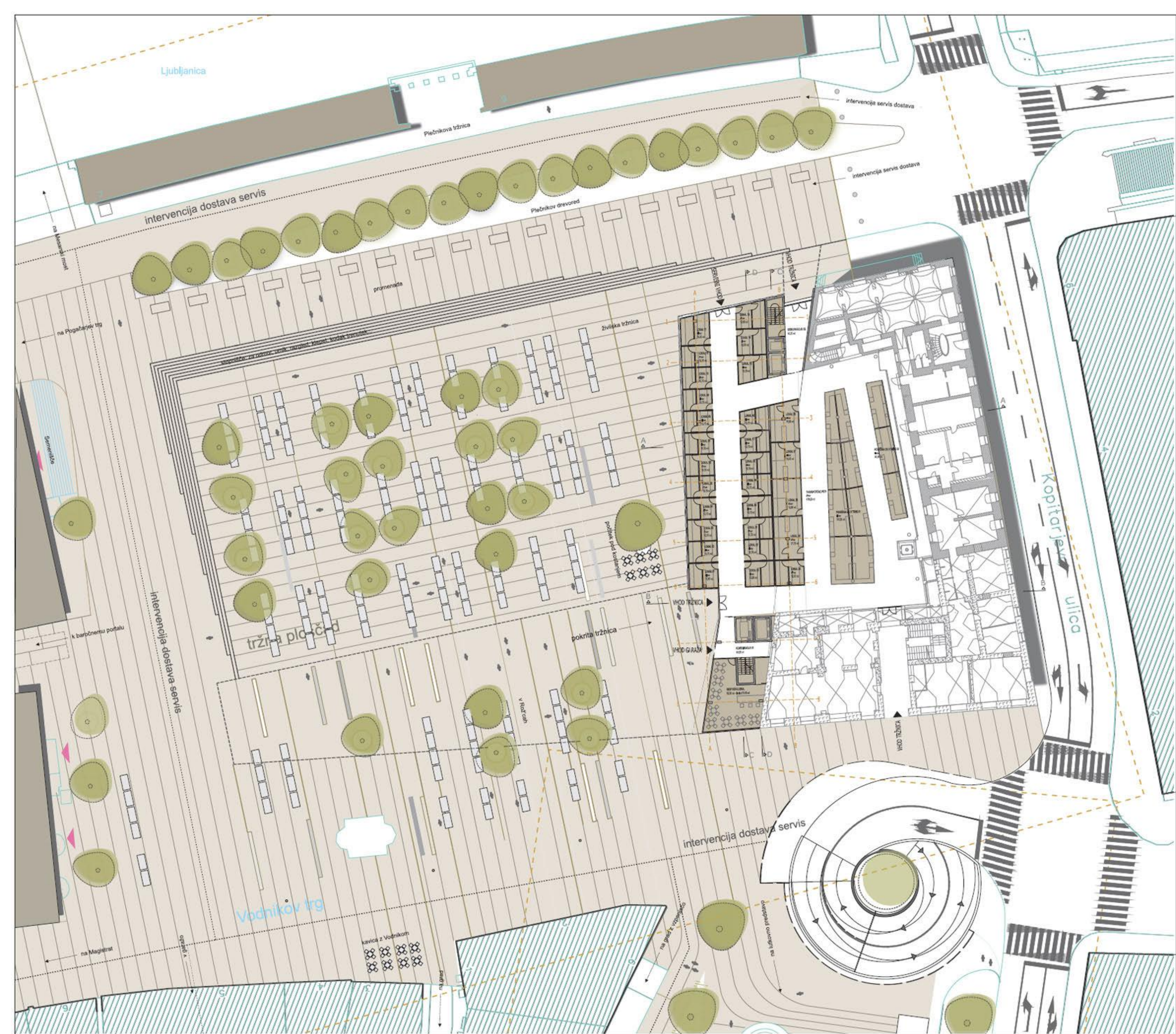
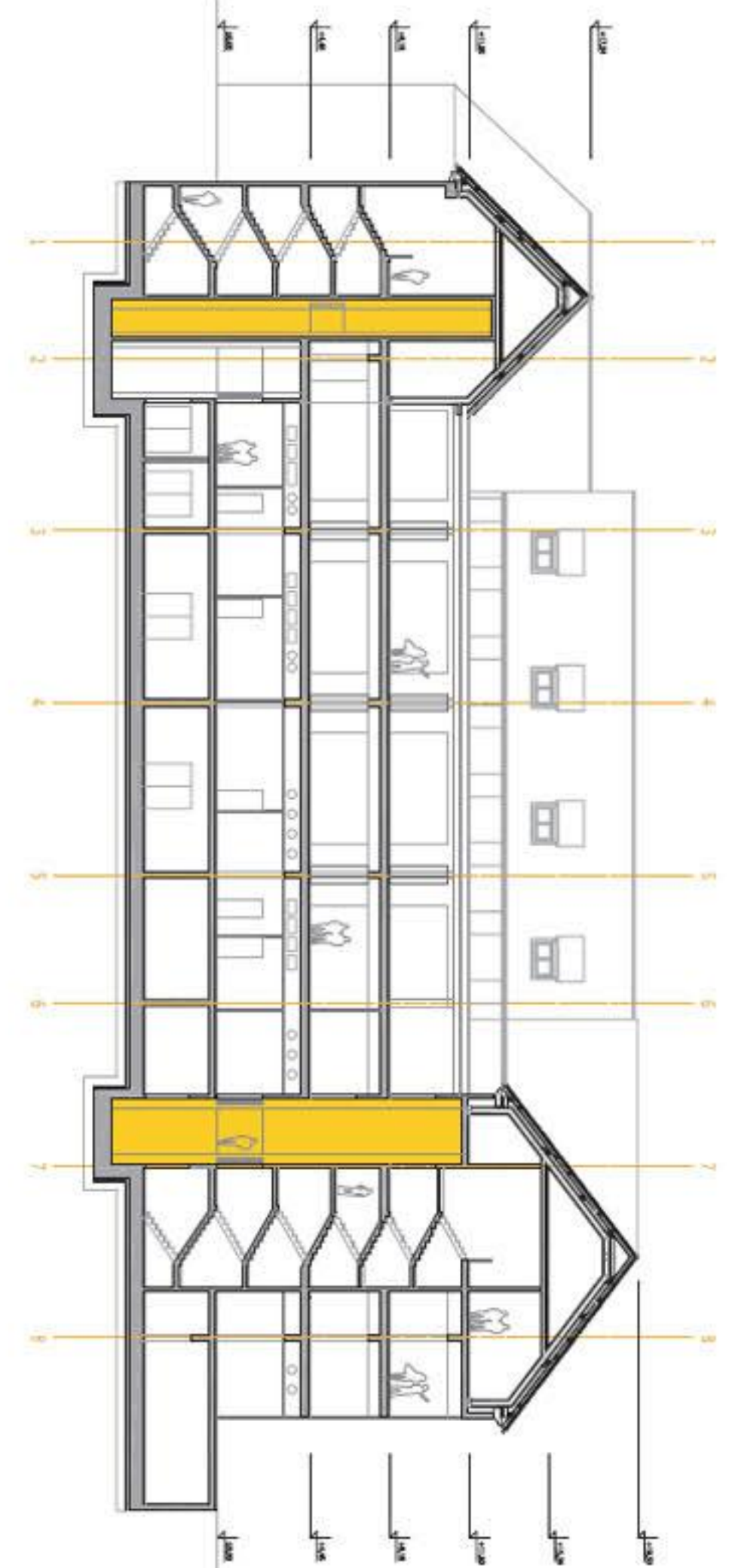


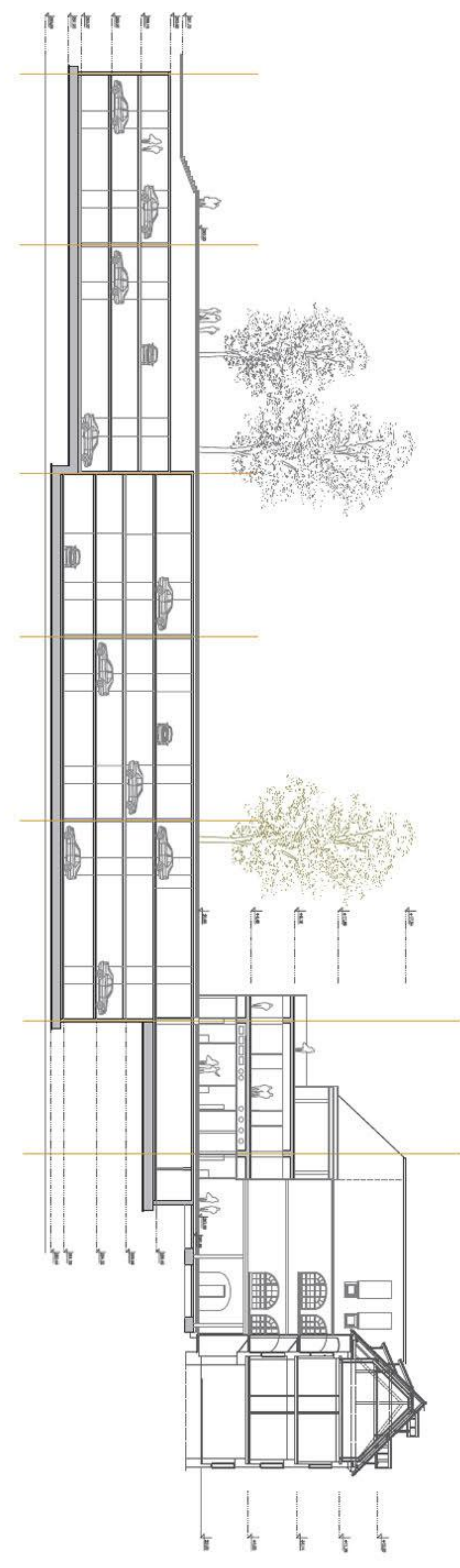
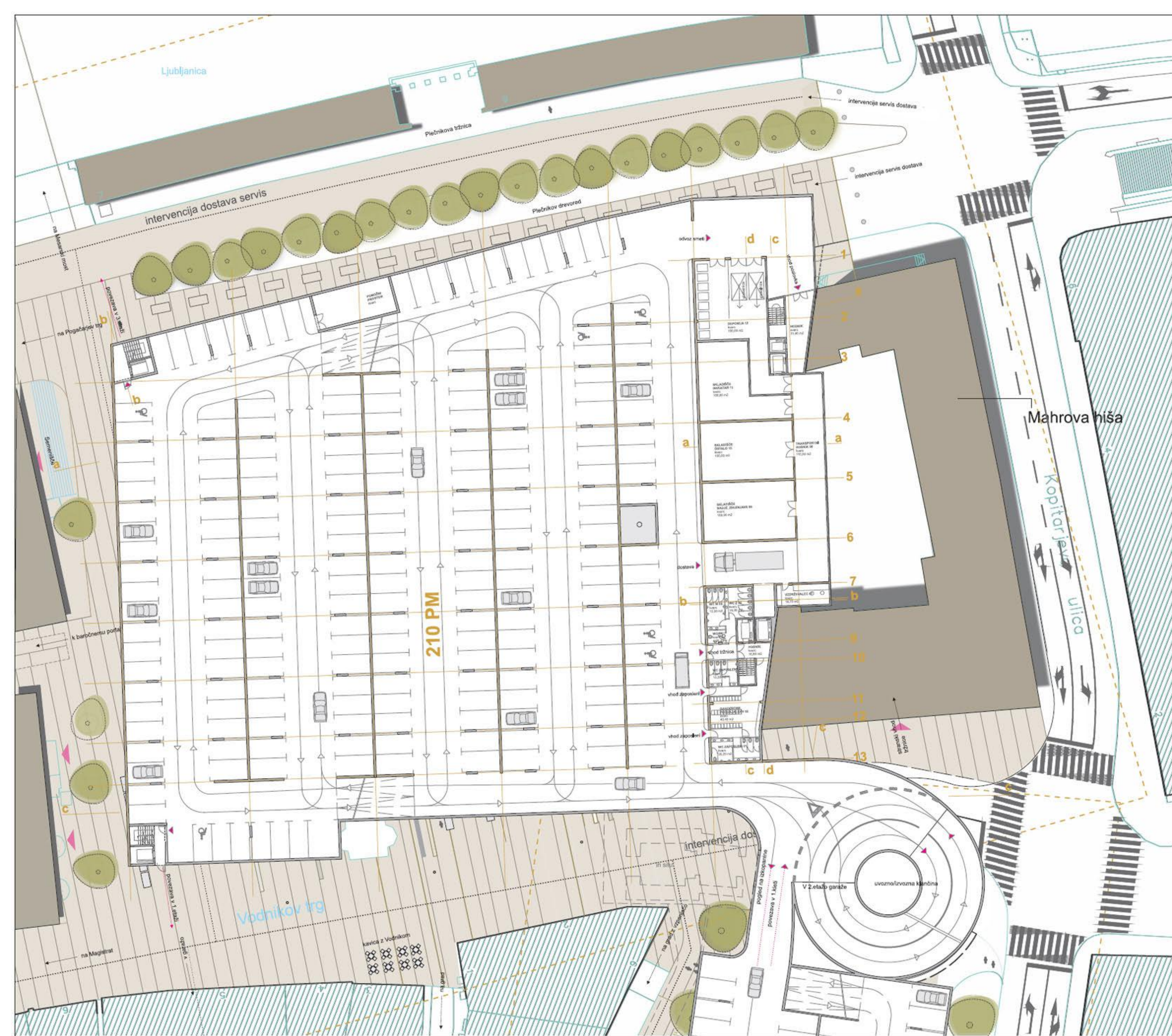
1.0 SCHEMA RAZPoredITVE PRODAJNIH PROSTOROV V POKRITI TRŽNICA

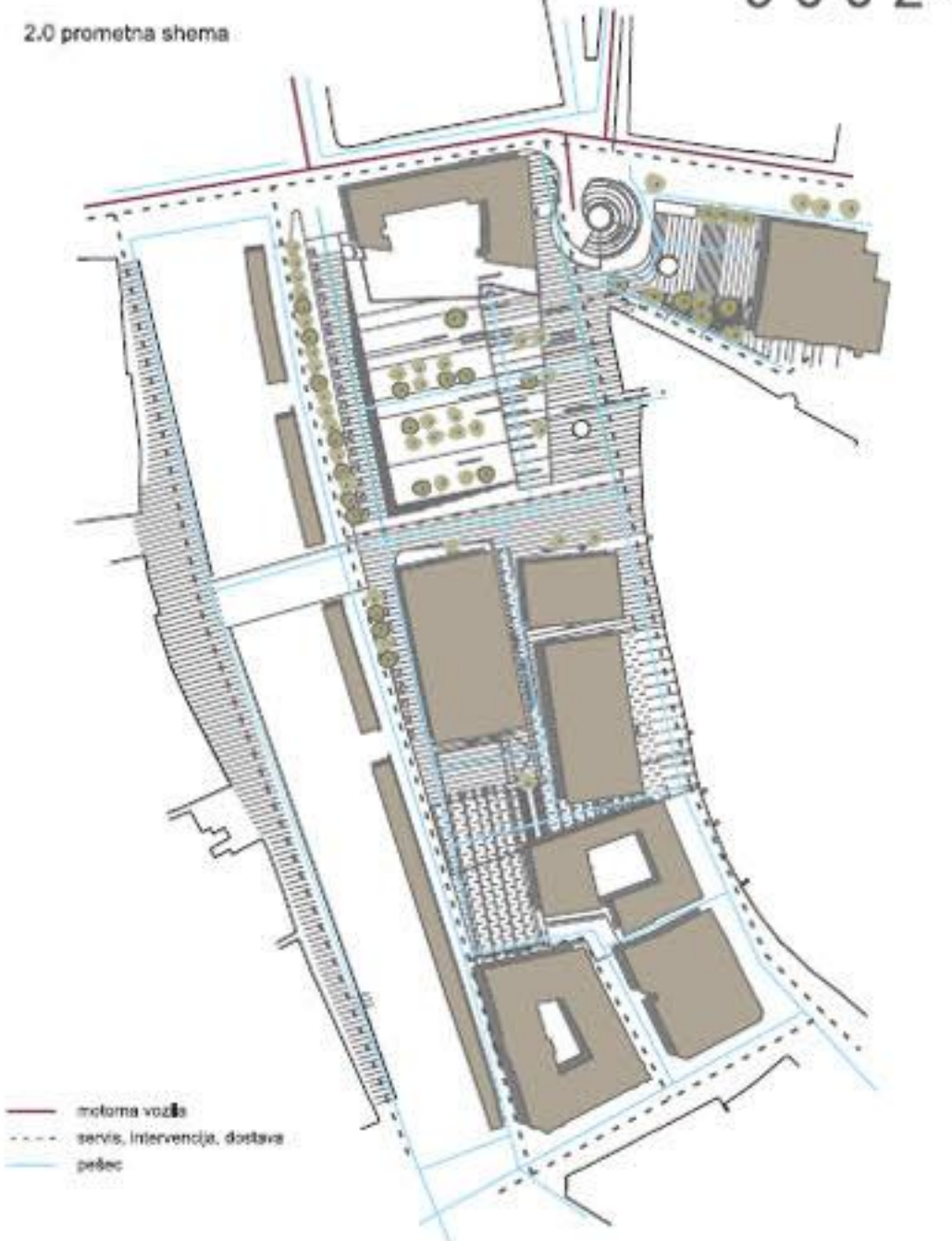
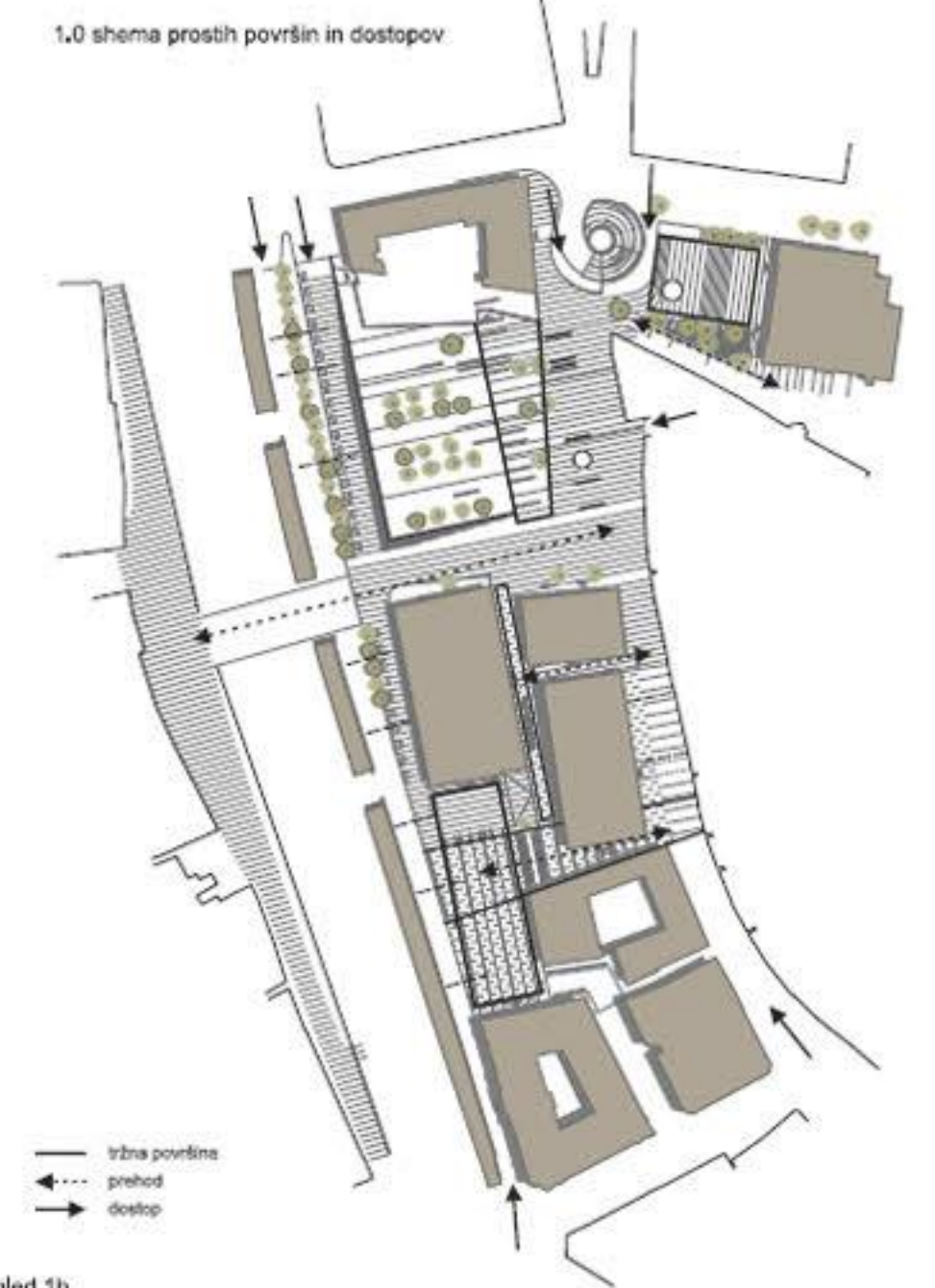
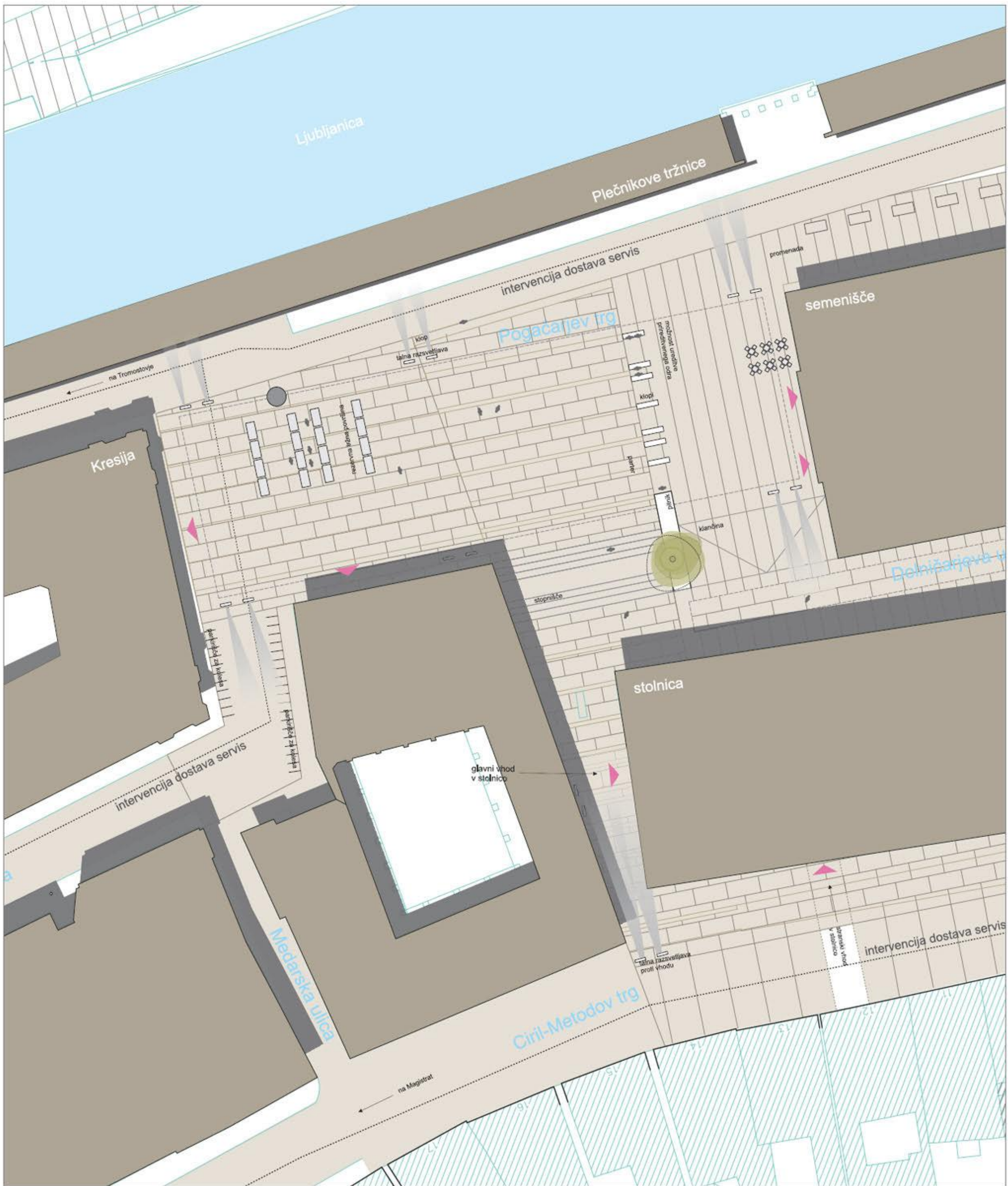
- vitrine
- suha sadja
- perutnina, meso
- kruh, pecivo
- delikatese
- mlinici, kava
- neapredelana
- lokal



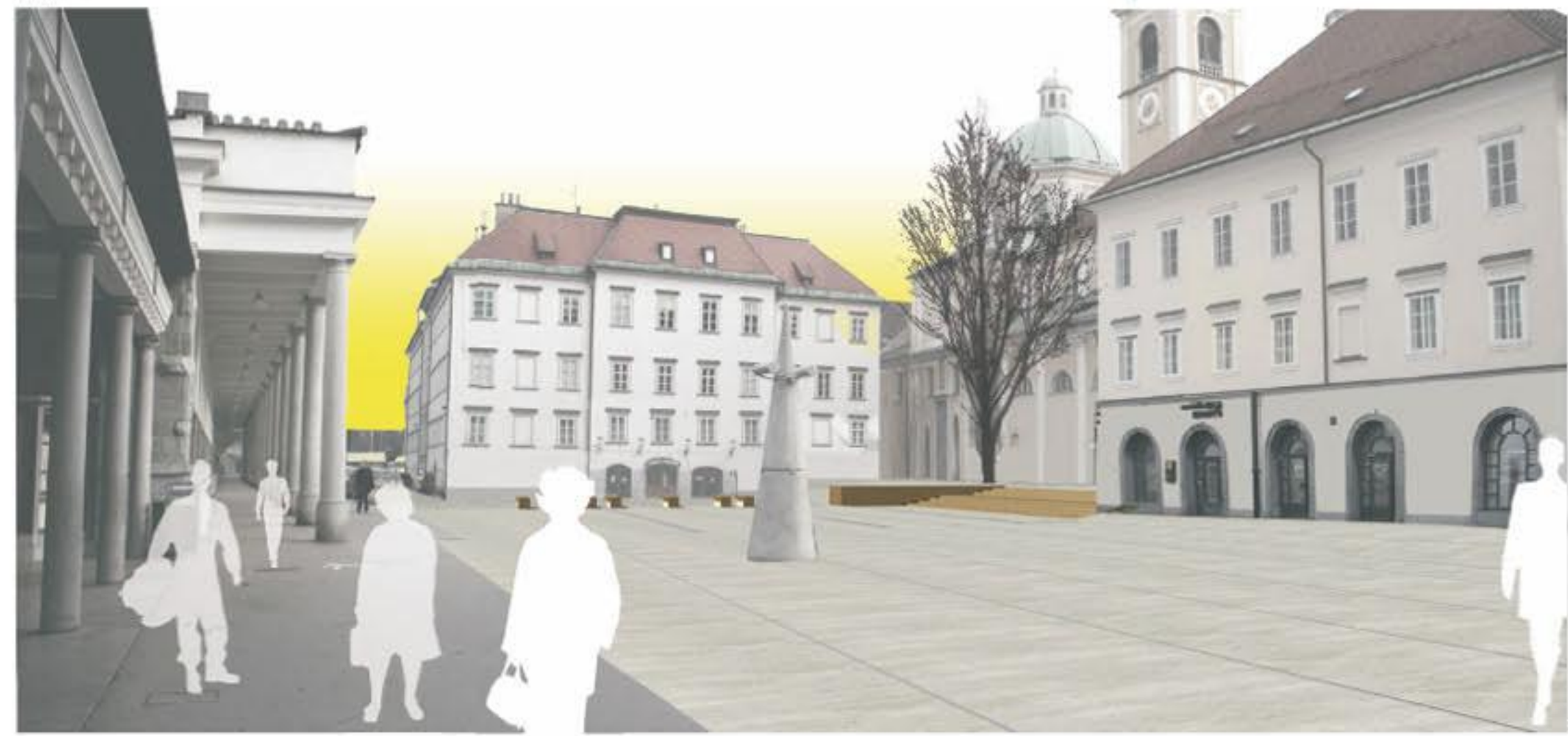
2.0 VZDOLJNI PREZ C-C





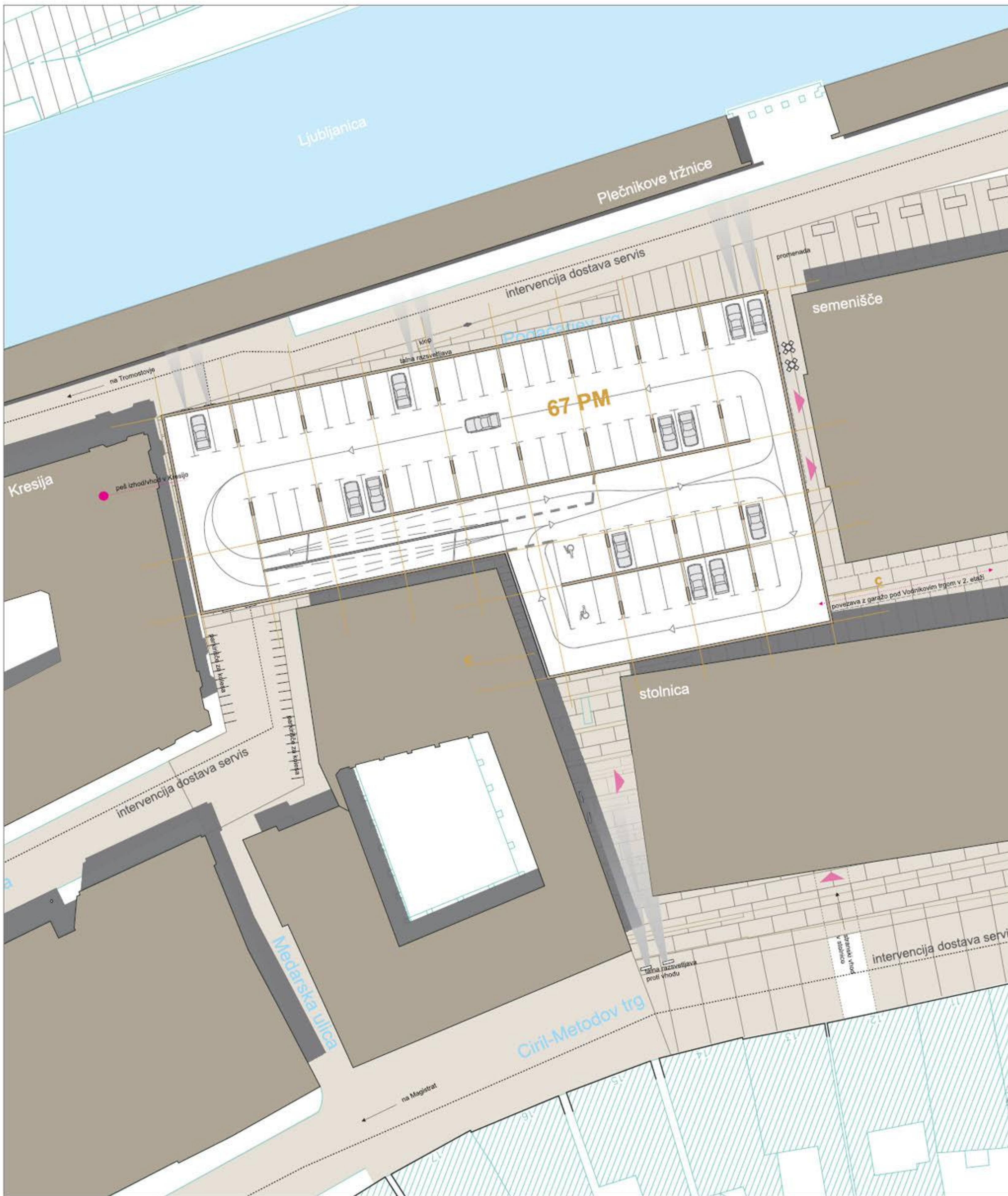


pogled 1b

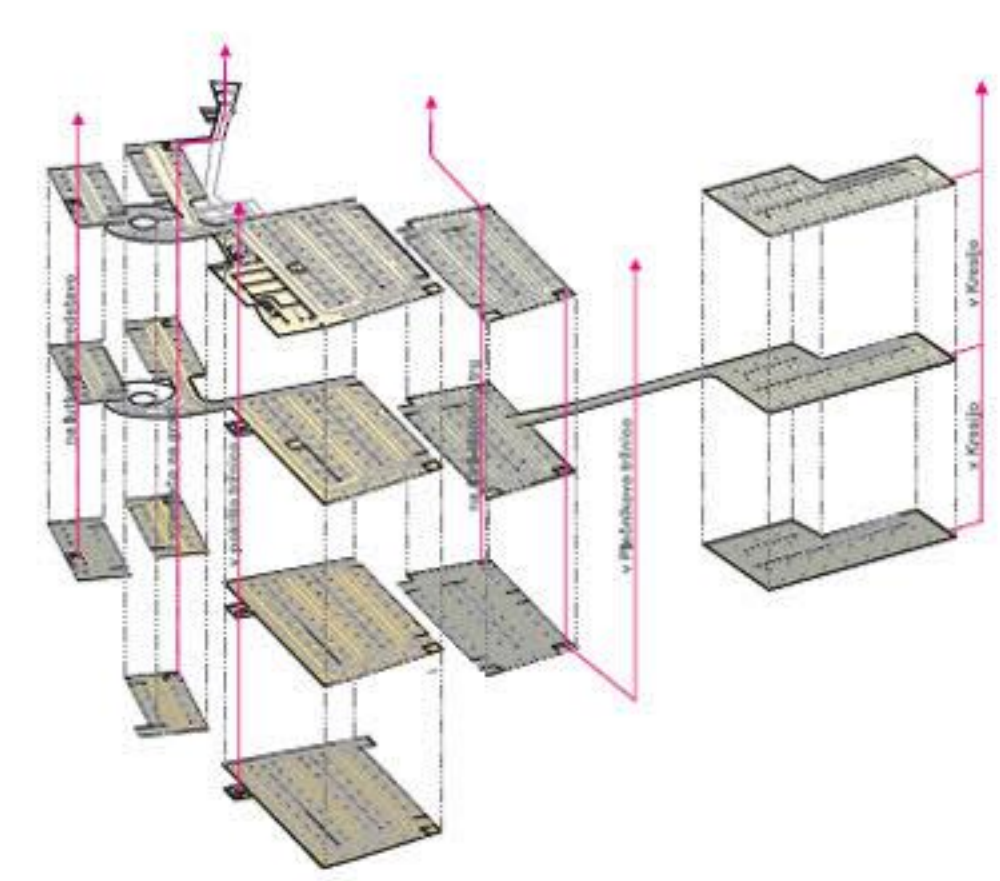


pogled 2b

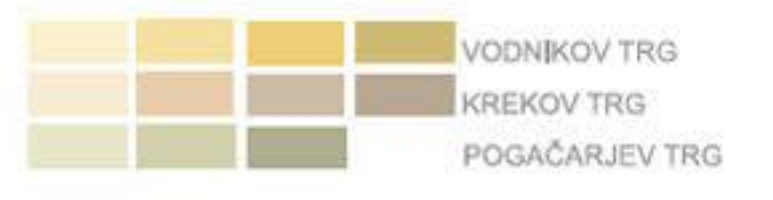
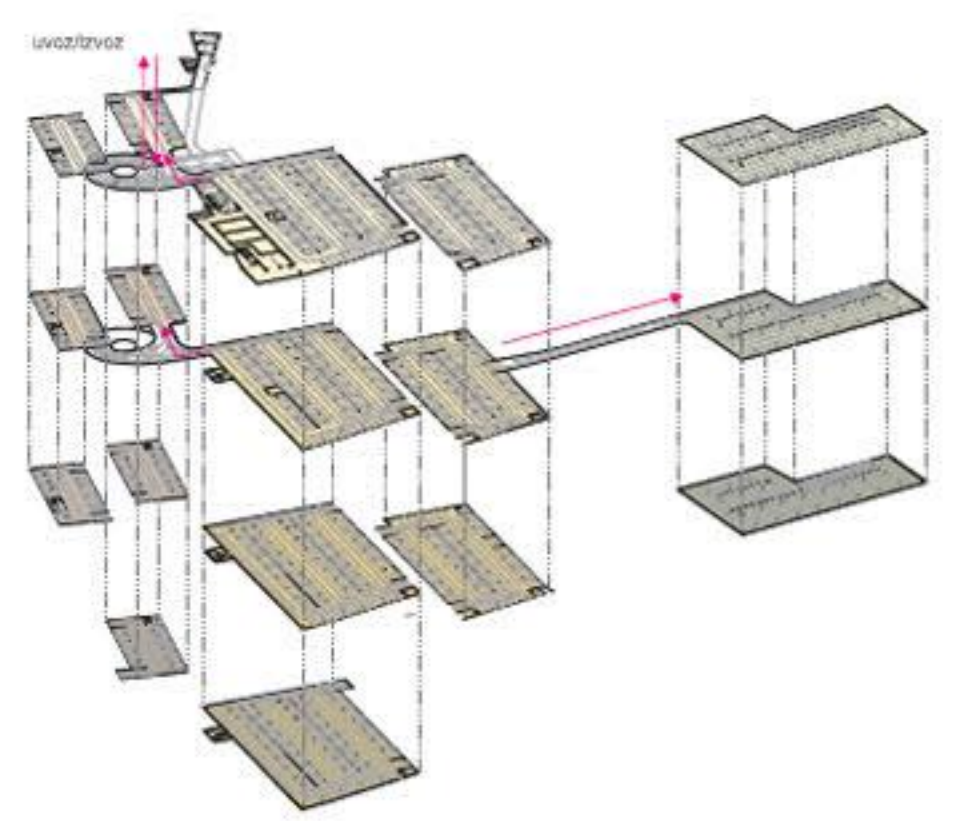




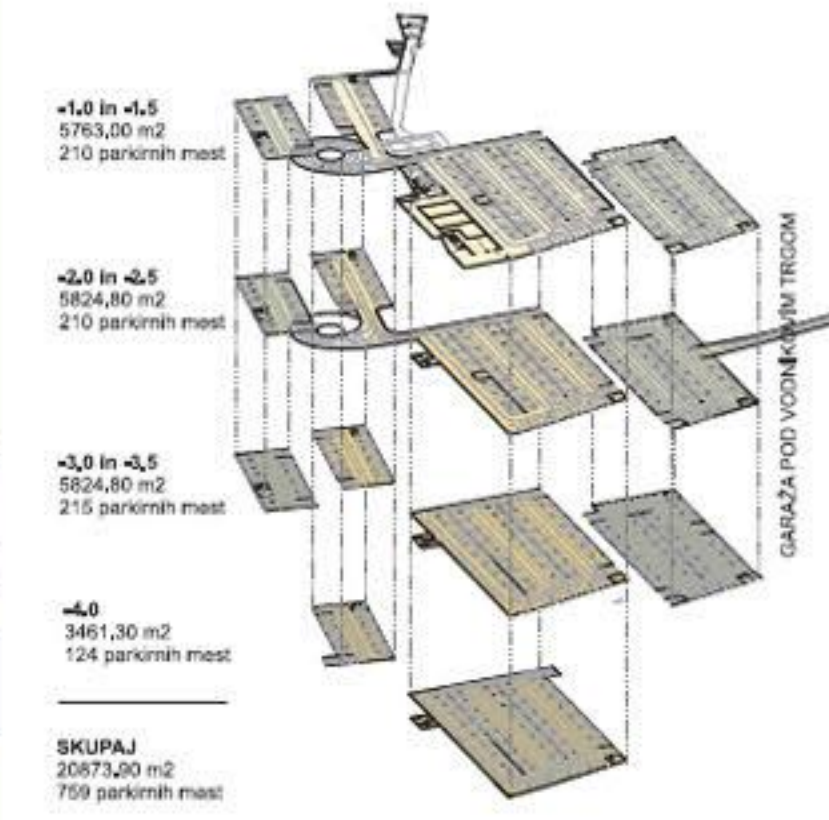
1:1000 IZ GARAŽE



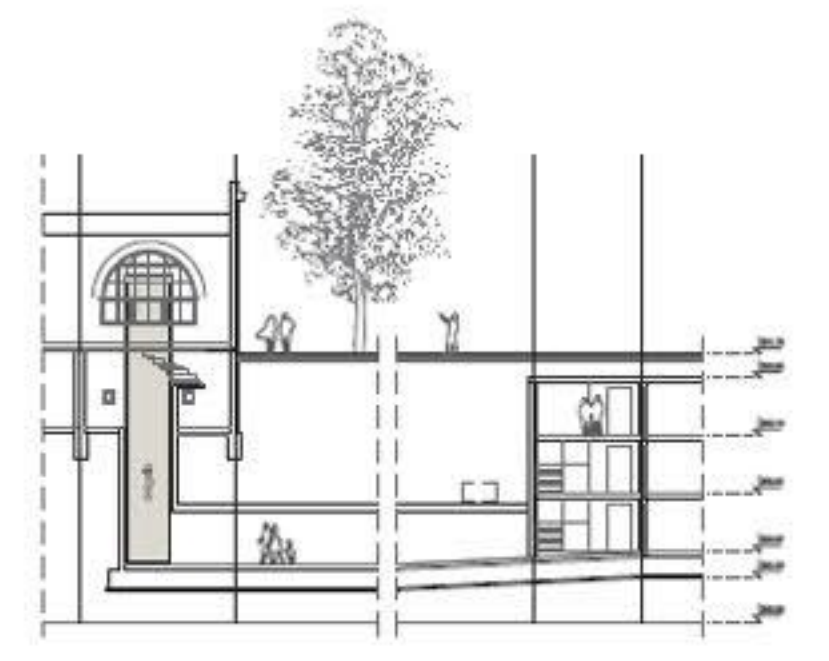
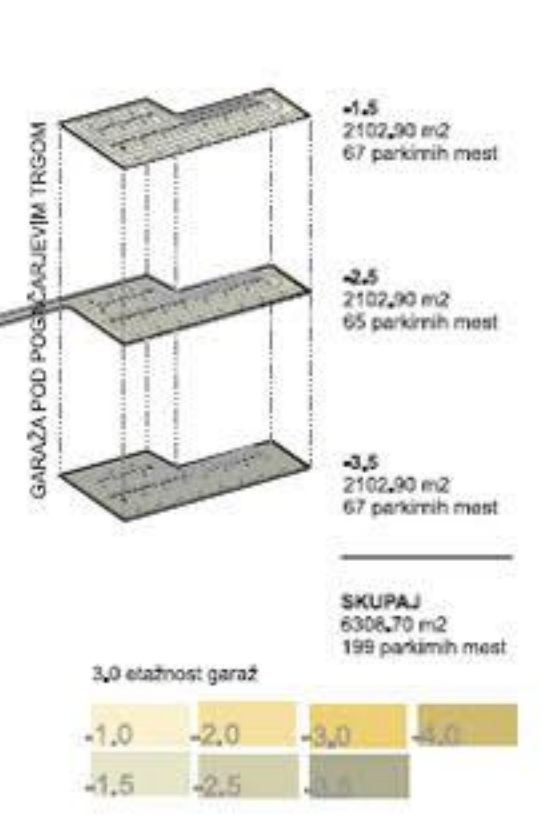
POVEZAVE MED GARAŽAMI



GARAŽA POD VODNIKOVIM TRGOM



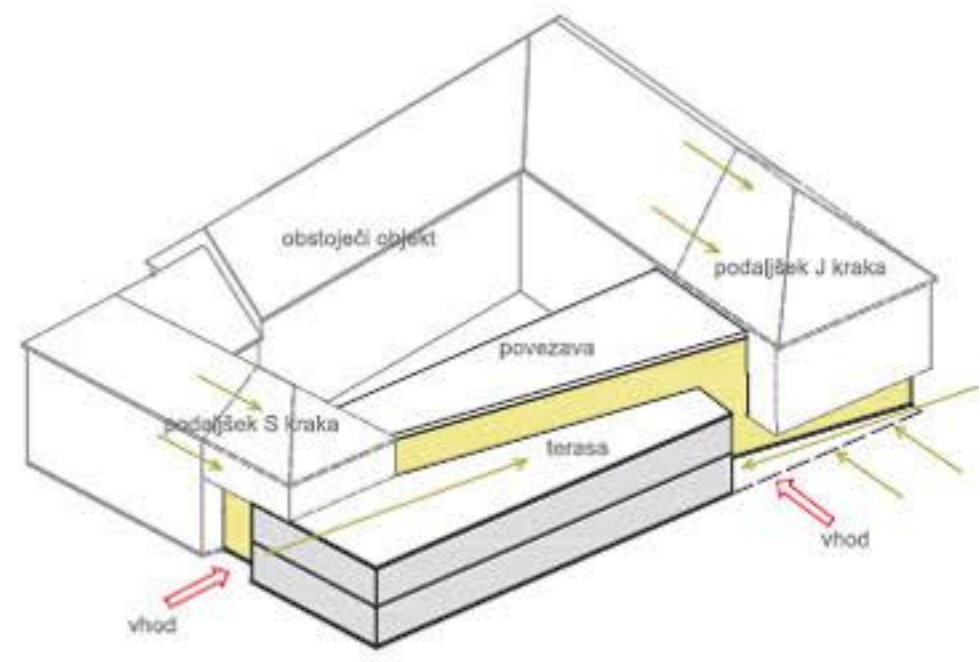
GARAŽA POD POGAČARJEVIM TRGOM



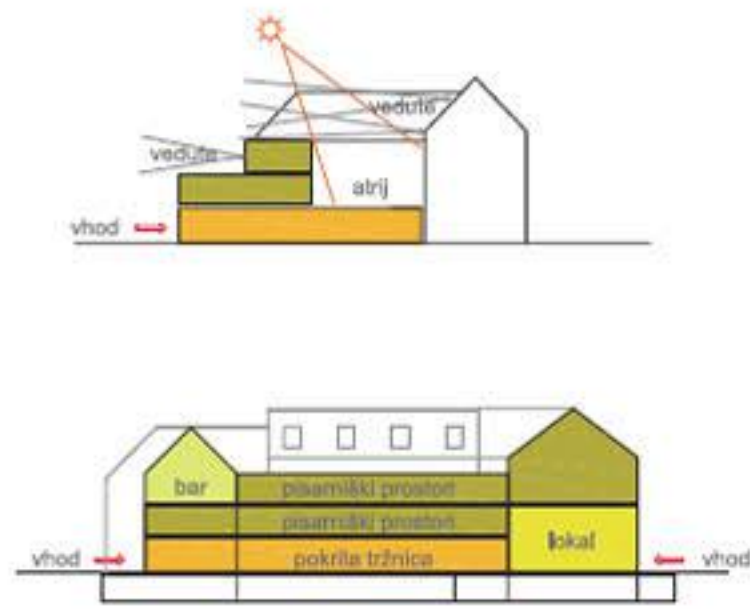
SHEMATSKI PREREZ ČEZ POVEZAVO VODNIKOVE GARAŽE TER PLEČNIKOVIM TRŽNICAM

pogled 2b (večerna razsvetjava)





1.0 SHEMA VOLUMNOV



2.0 SHEMA PROGRAMSKIH SKLOPOV

pogled 5a - S CIRIL METODOVEGA TRGA



pogled 7a - KREKOV TRG



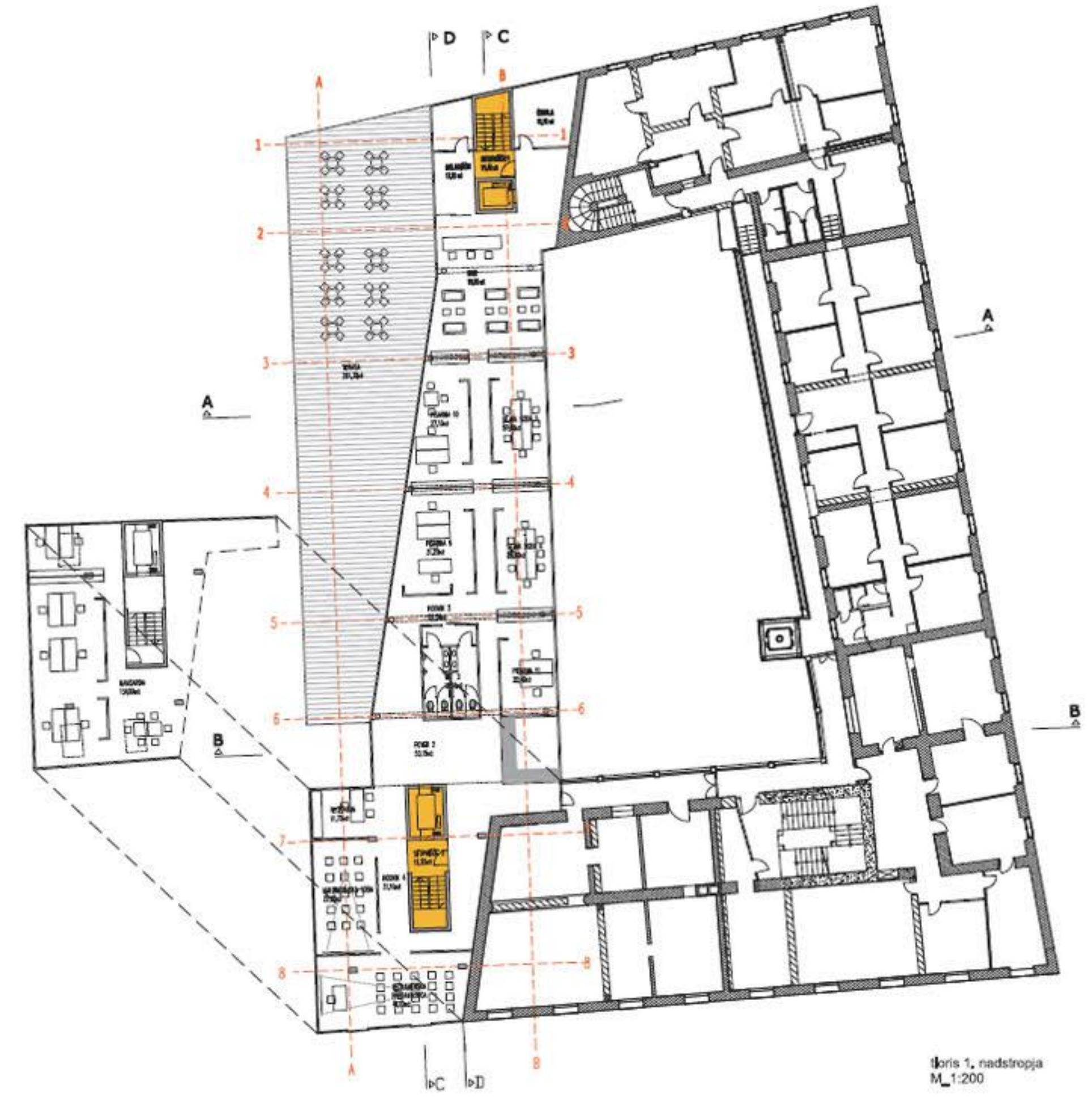
pogled 4a - Z GRADU



pogled 6a - Z MESARKEGA MOSTU



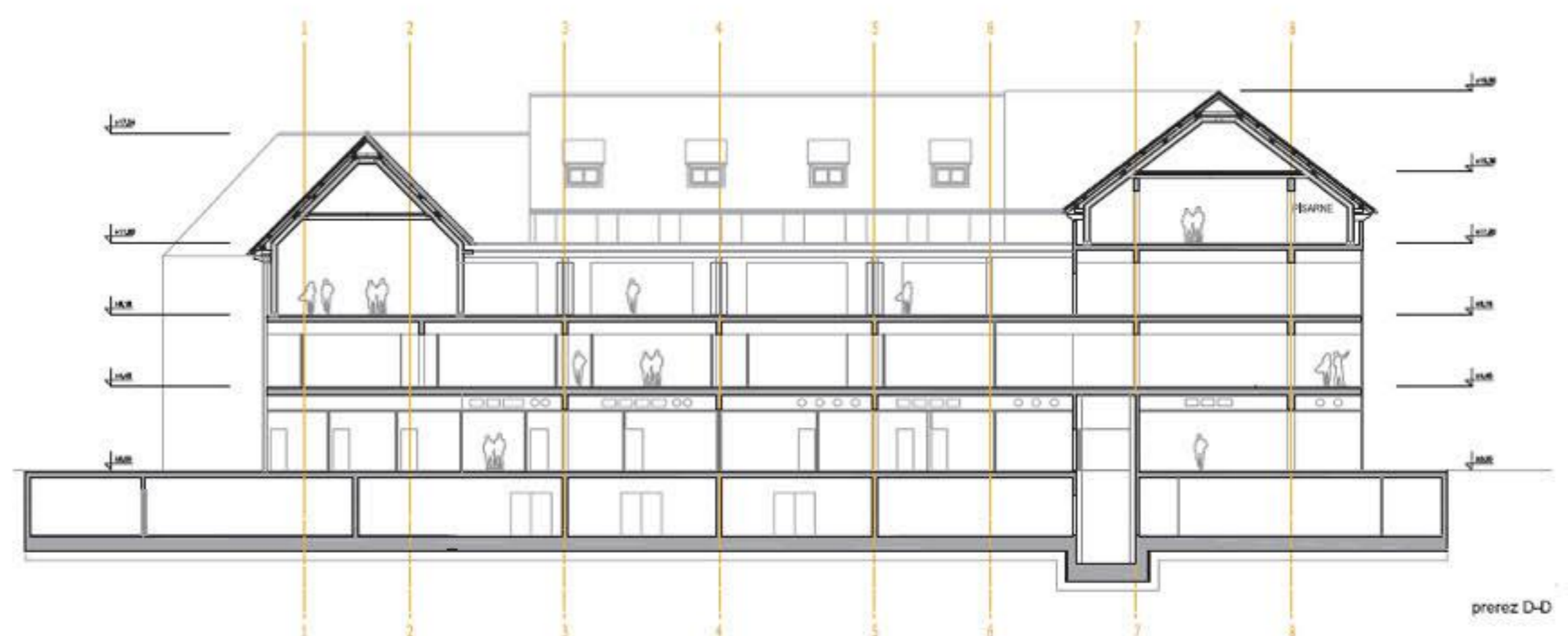
|loris 1, nadstropja
 M_1:200



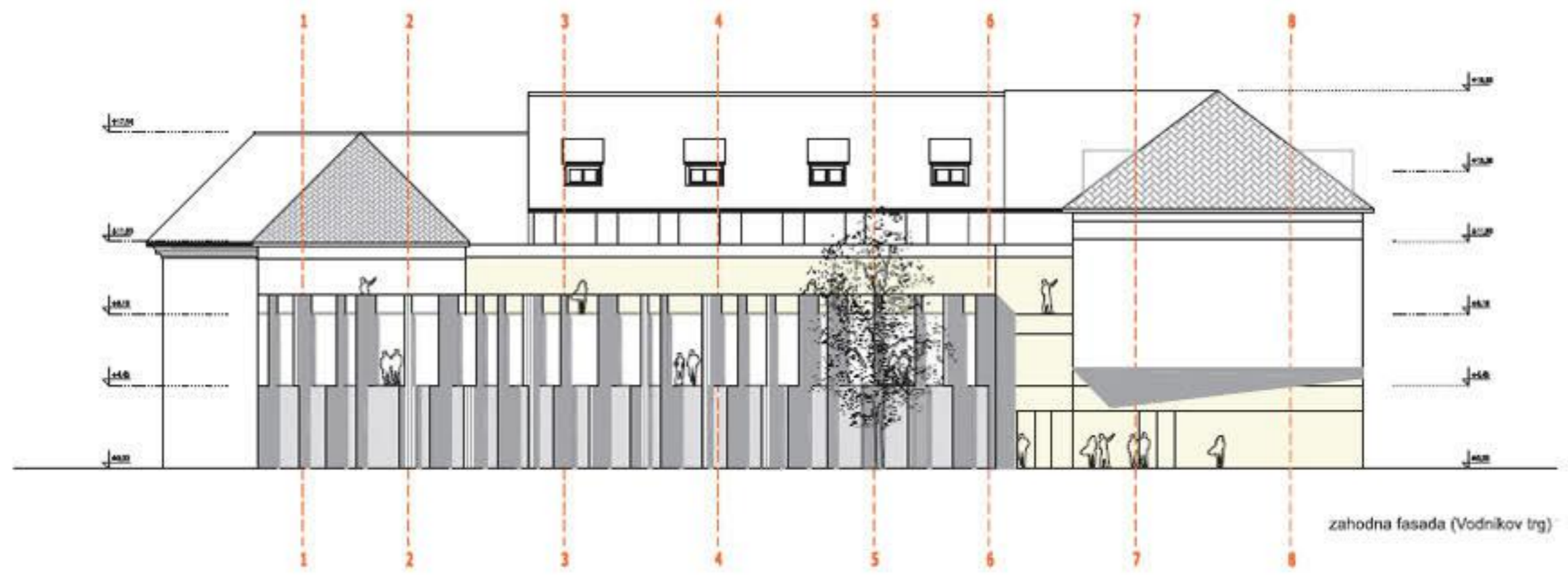
|loris 1, nadstropja
 M_1:200



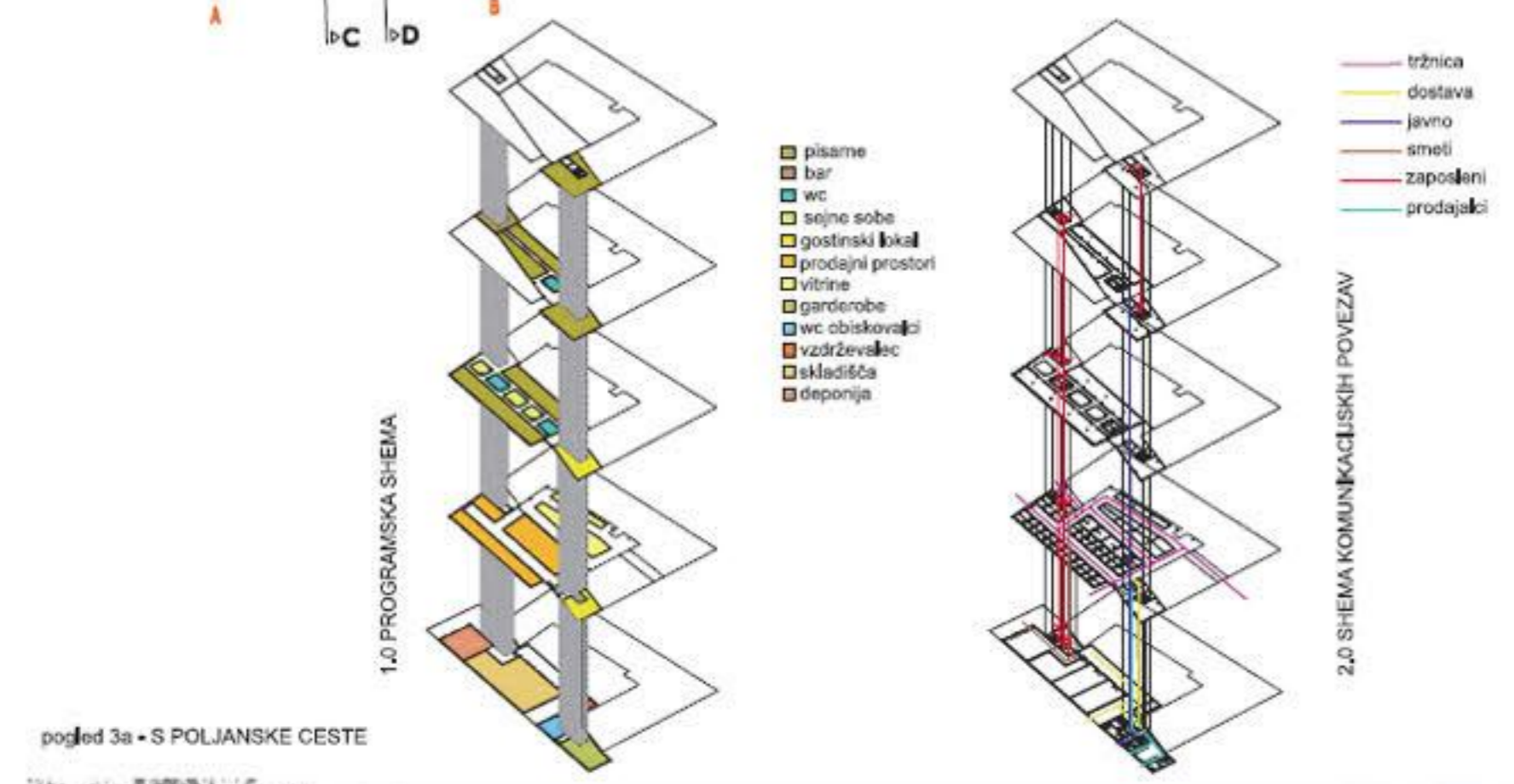
1. nadstropja
varijanta tipične etaže hotela
M 1:200



prerez D-D

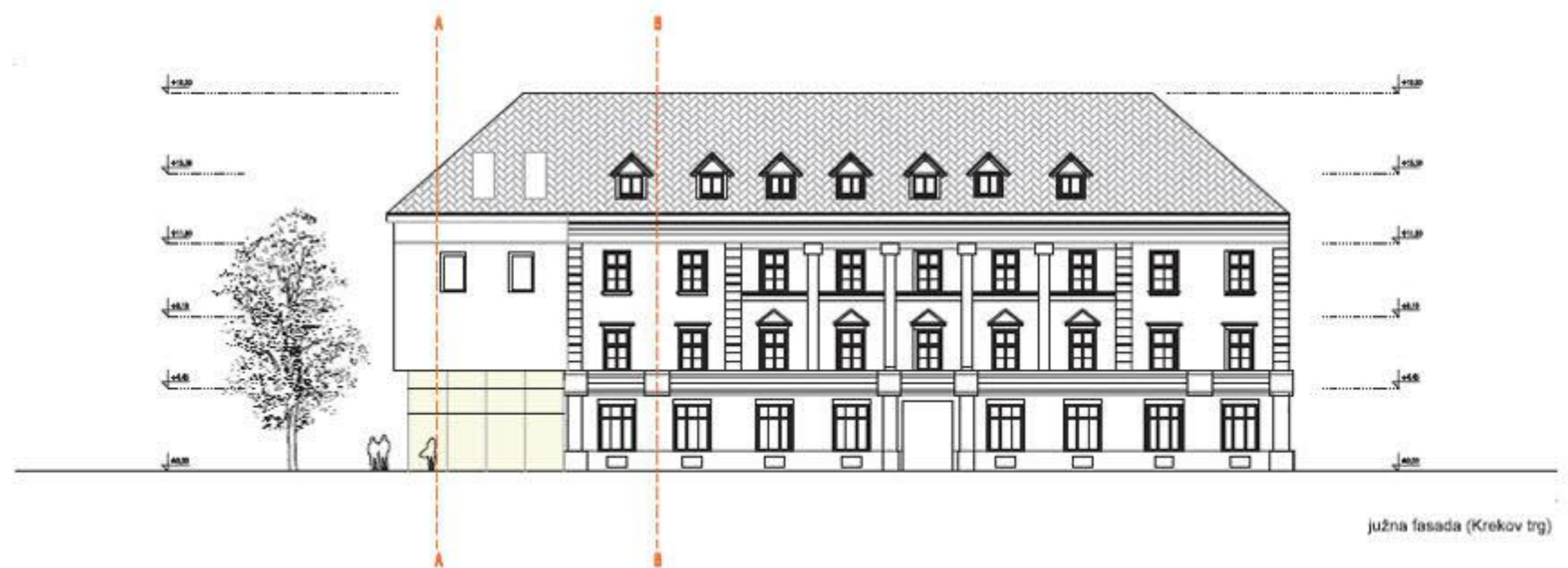


zahodna fasada (Vodnikov trg)

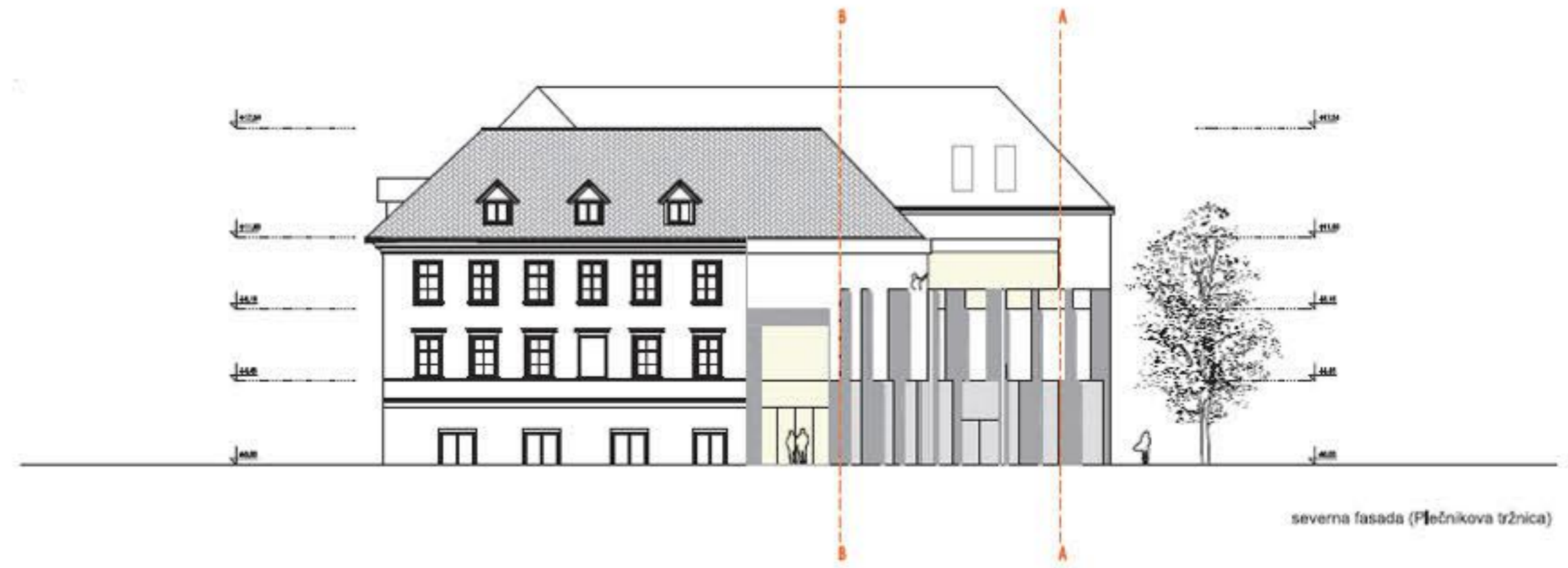


- pisarne
- bar
- wc
- sejne sobe
- gostinski lokal
- prodajni prostori
- vitrine
- garderobe
- wc obiskovalci
- vzdrževallec
- skladišča
- deponija

- tržnica
- dostava
- javno
- smeti
- zaposleni
- prodajalci



južna fasada (Krekov trg)



severna fasada (Plečnikova tržnica)