



situacija 1:500



struktura betona (rebar)



odnos lesa do debel drevca (rebar)



so-naravna vegetacija



nove gruča avtohtonih drevca



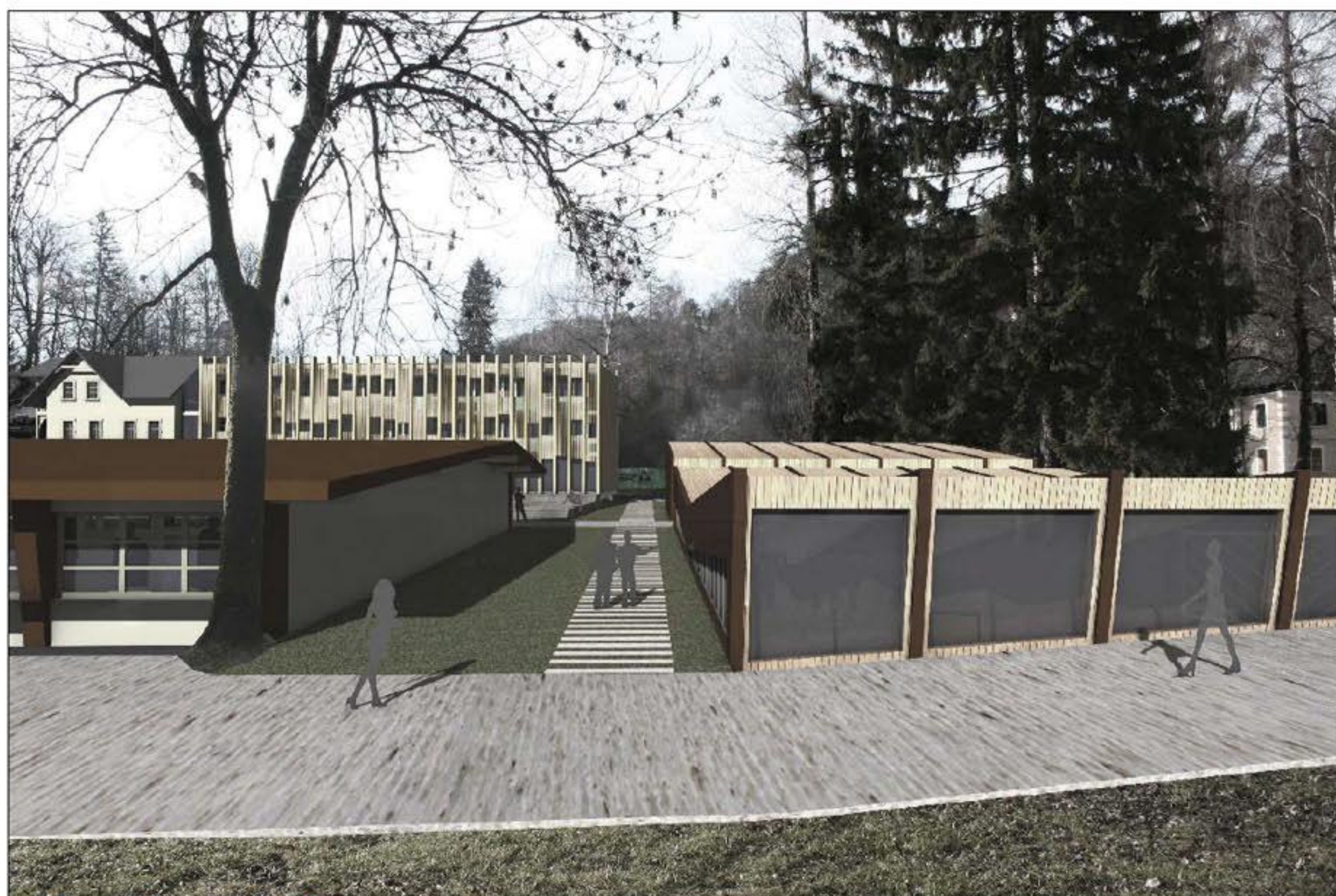
lesena plaza



intenzivna zazeleljivost



betonske plošče v travi



predpisan pogled na novo telovadnico



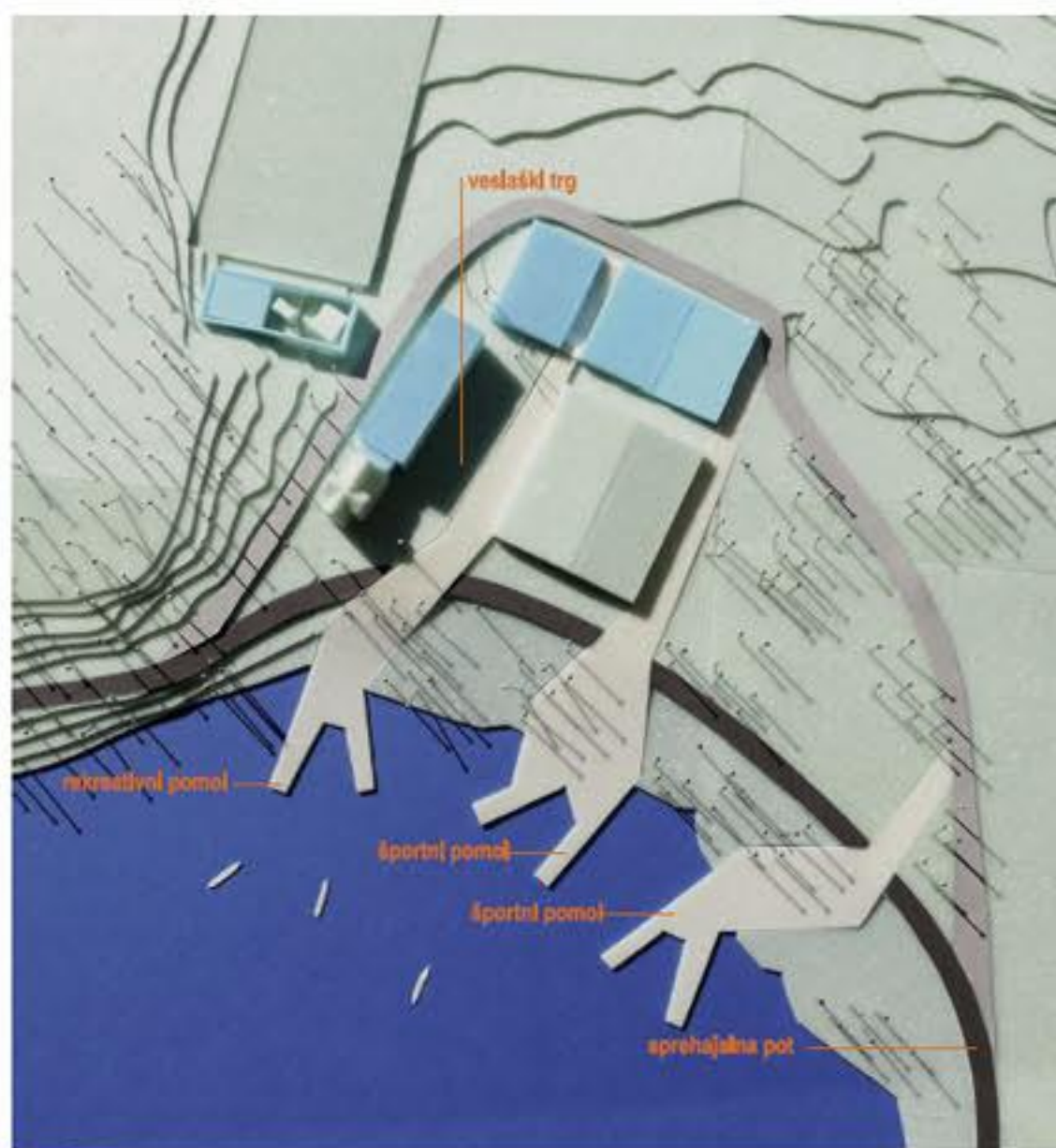
fotomontaža Velike In Male Zake



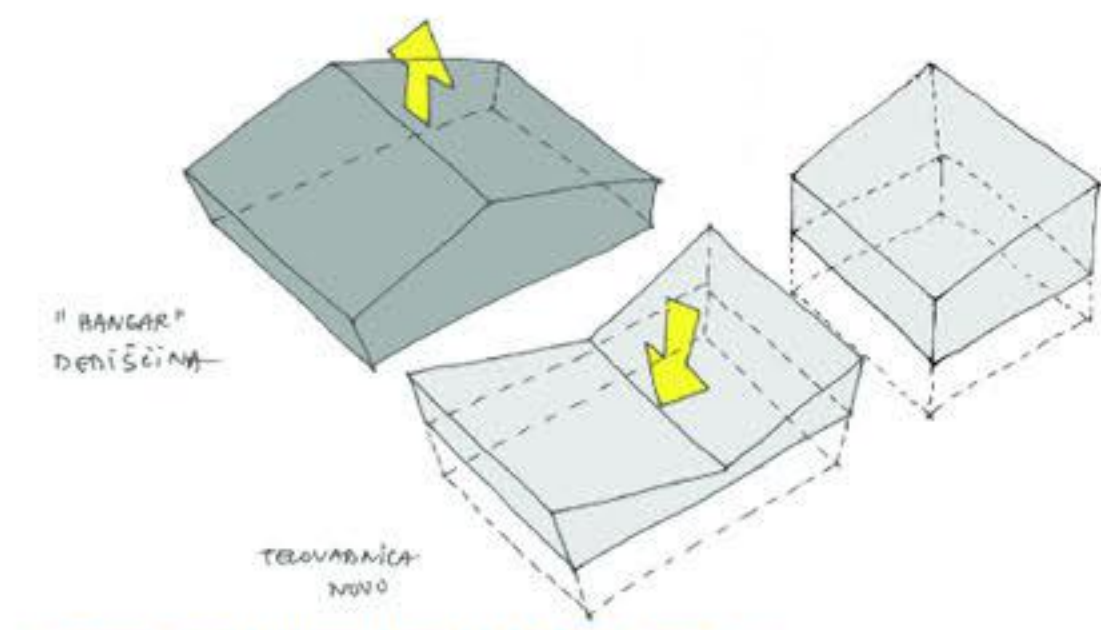
situacija v času SP 1:500



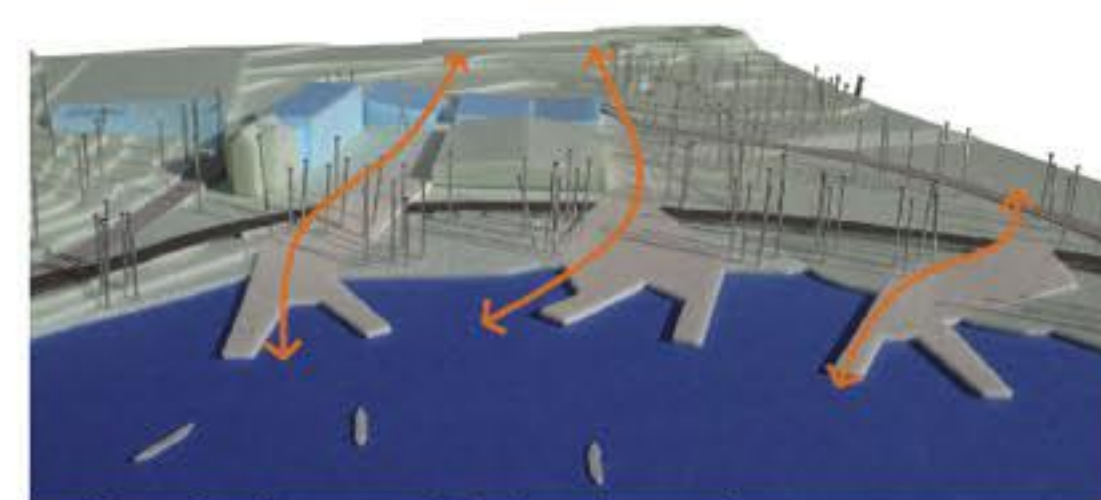
Velika Zaka



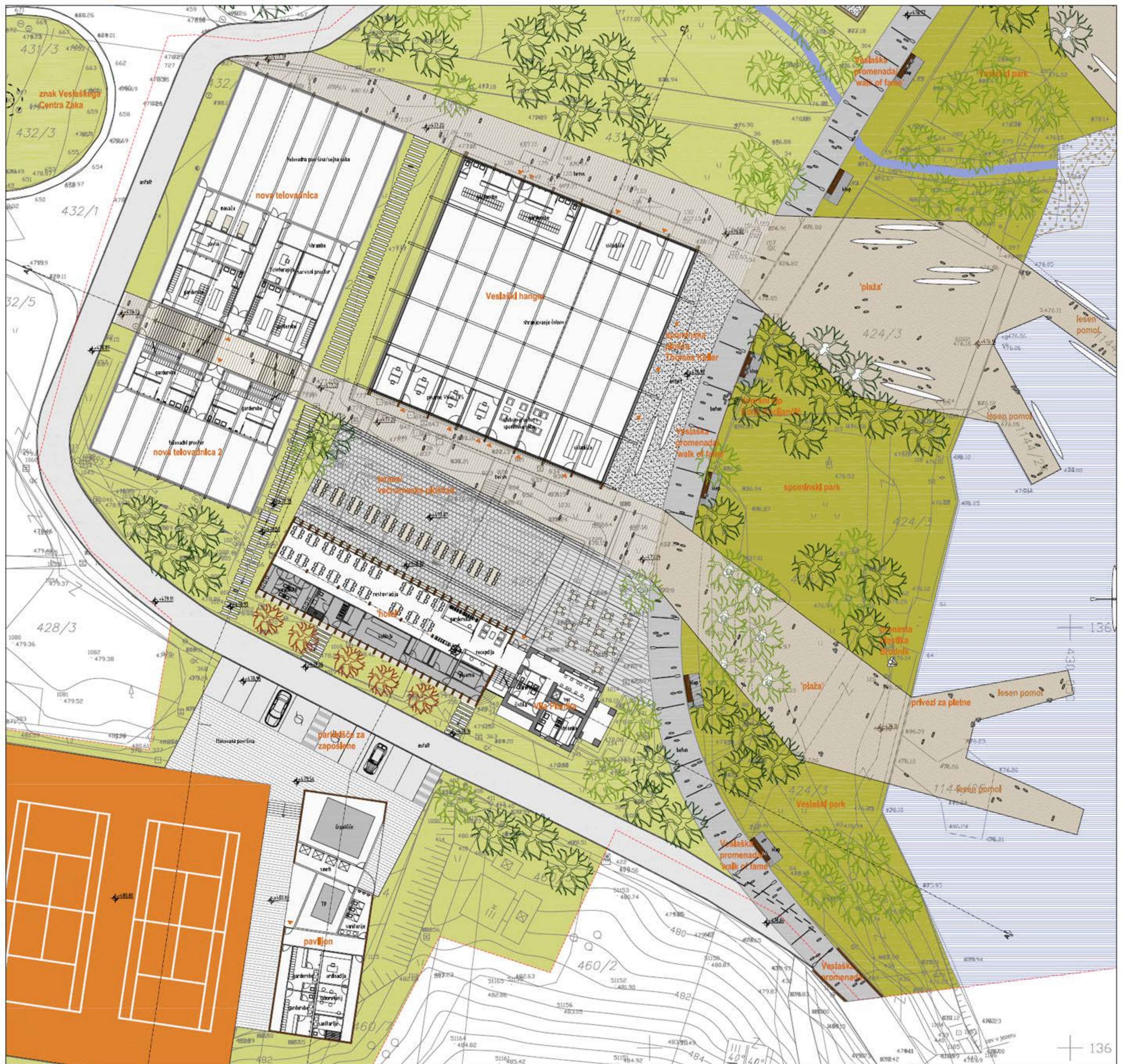
Mala Zaka



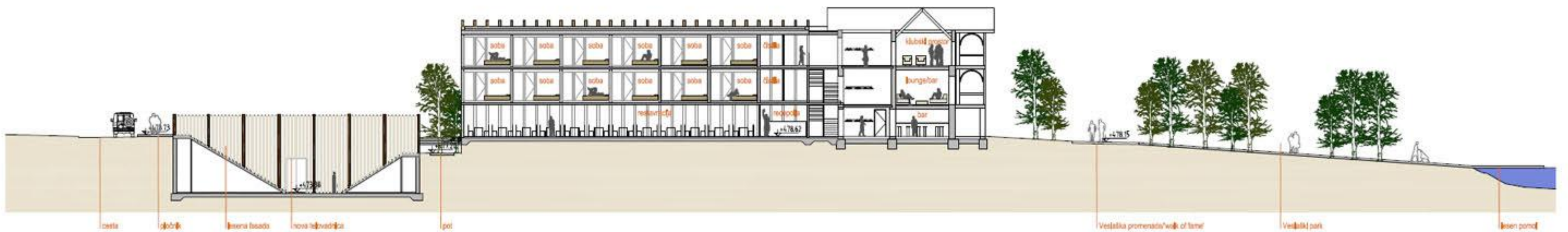
zasnova nove telovadnice kot poklon hangarju



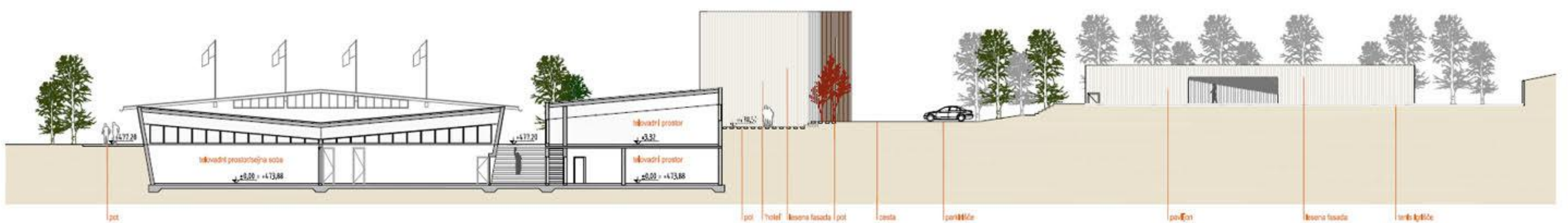
3 kline kot izpeljava obstoječih lesenih pomolov



črtiš prtiličja 1:200



prezrez A-A 1:200



prezrez B-B 1:200

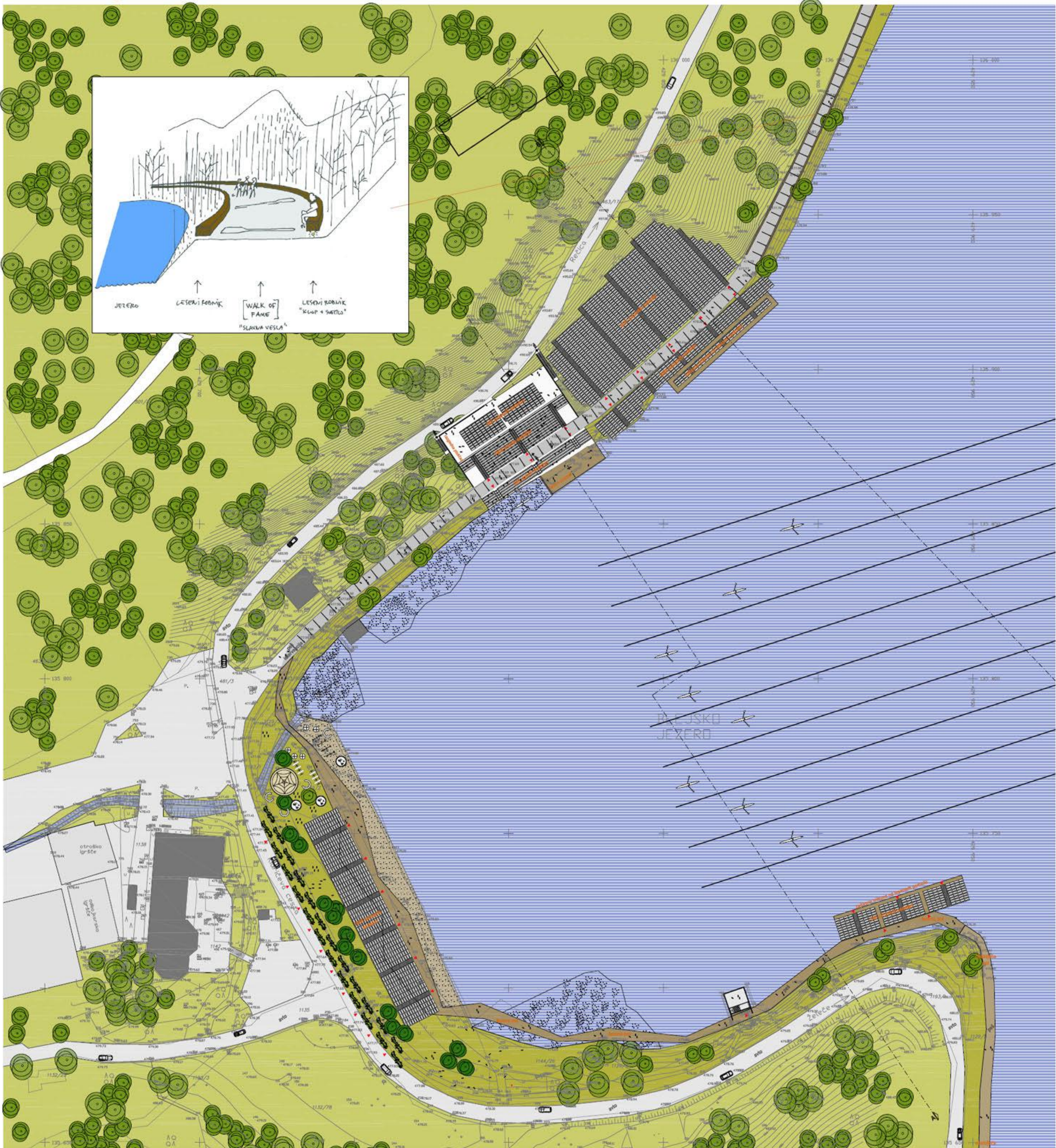


prezrez C-C 1:200

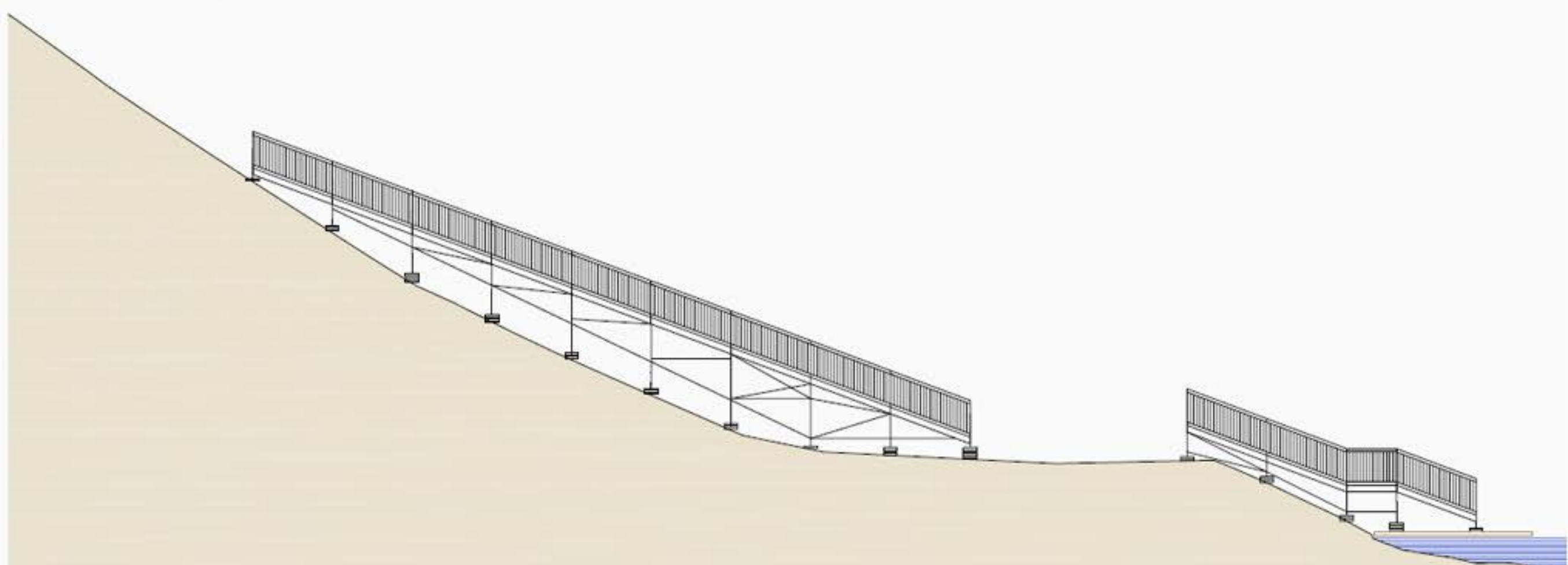




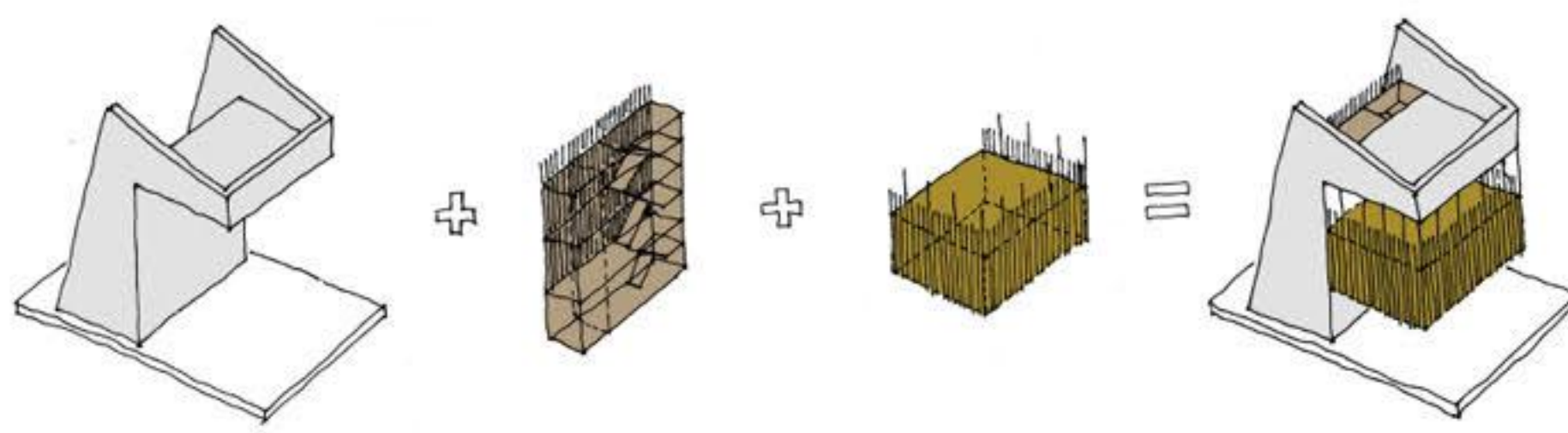
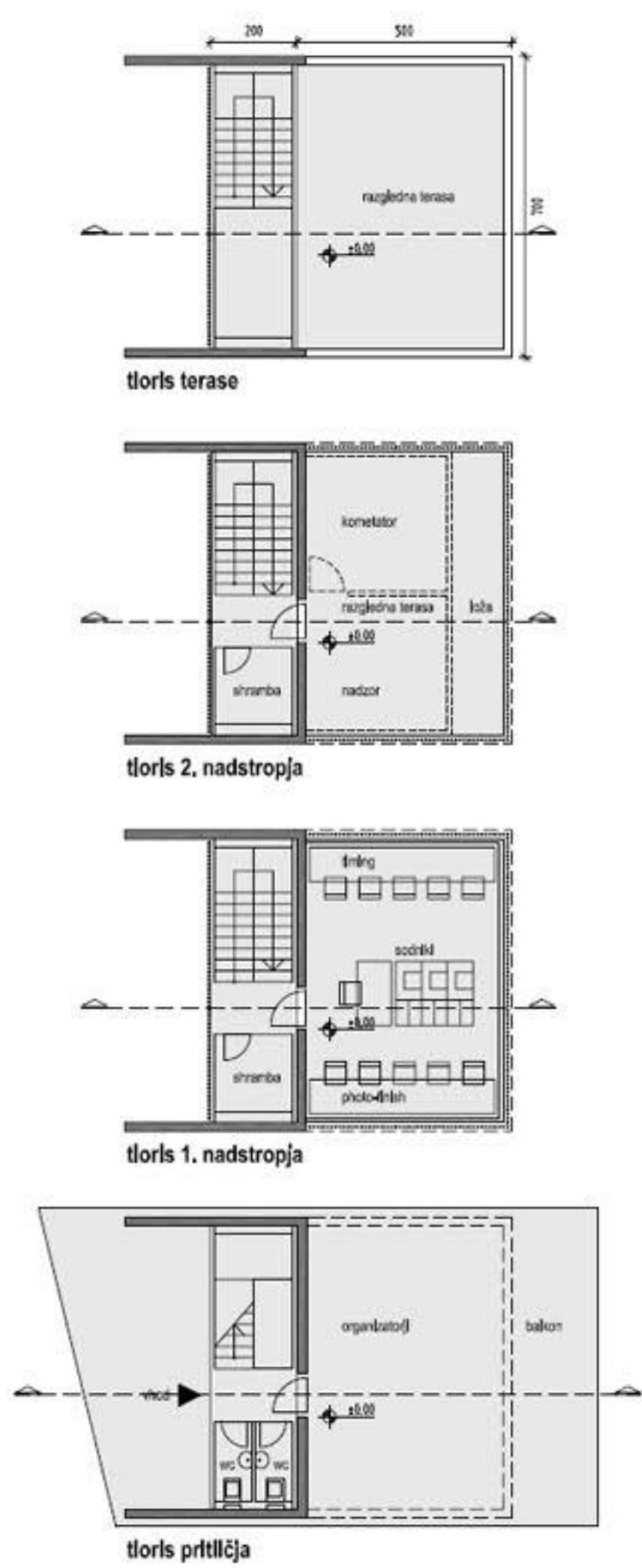
ureditvena situacija ciljne regatne arene z zunanjo in prometno ureditvijo v času treningov 1:500



ureditvena situacija ciljne regatne arene z zunanjo in prometno ureditvijo v času svetovnega prvenstva 1:500



prerez BB čez začasne tribune 1:500

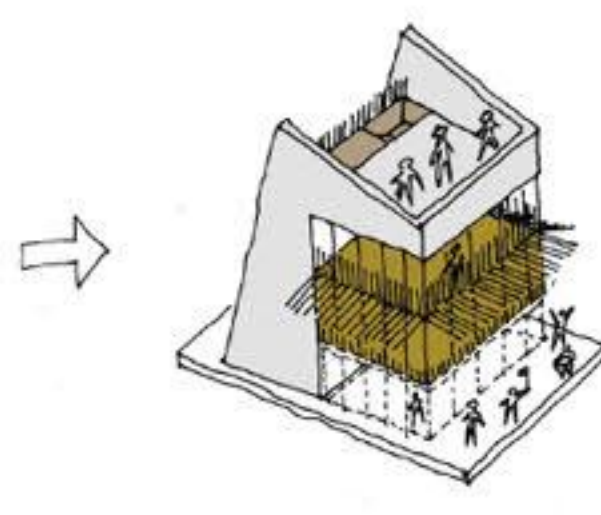


AB KONSTRUKCIJA  
KONZOLA  
(REMIJA S OBRAMBA NA  
STARIM STOLP)

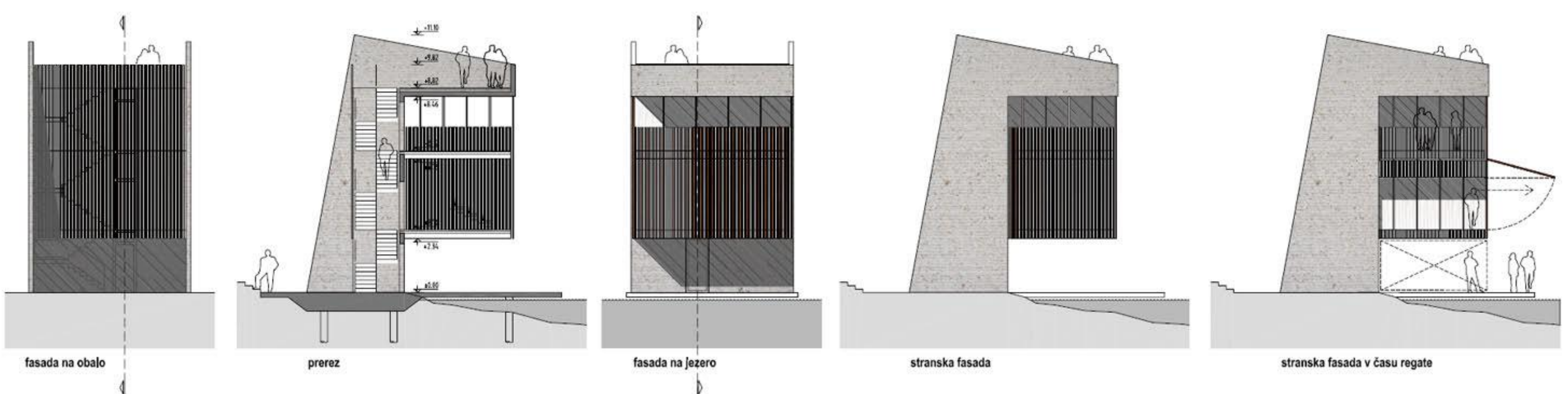
VERTIKALNE  
KONSTRUKCIJE  
+ SERVISI  
MONTAZNA LESENA  
KONSTRUKCIJA

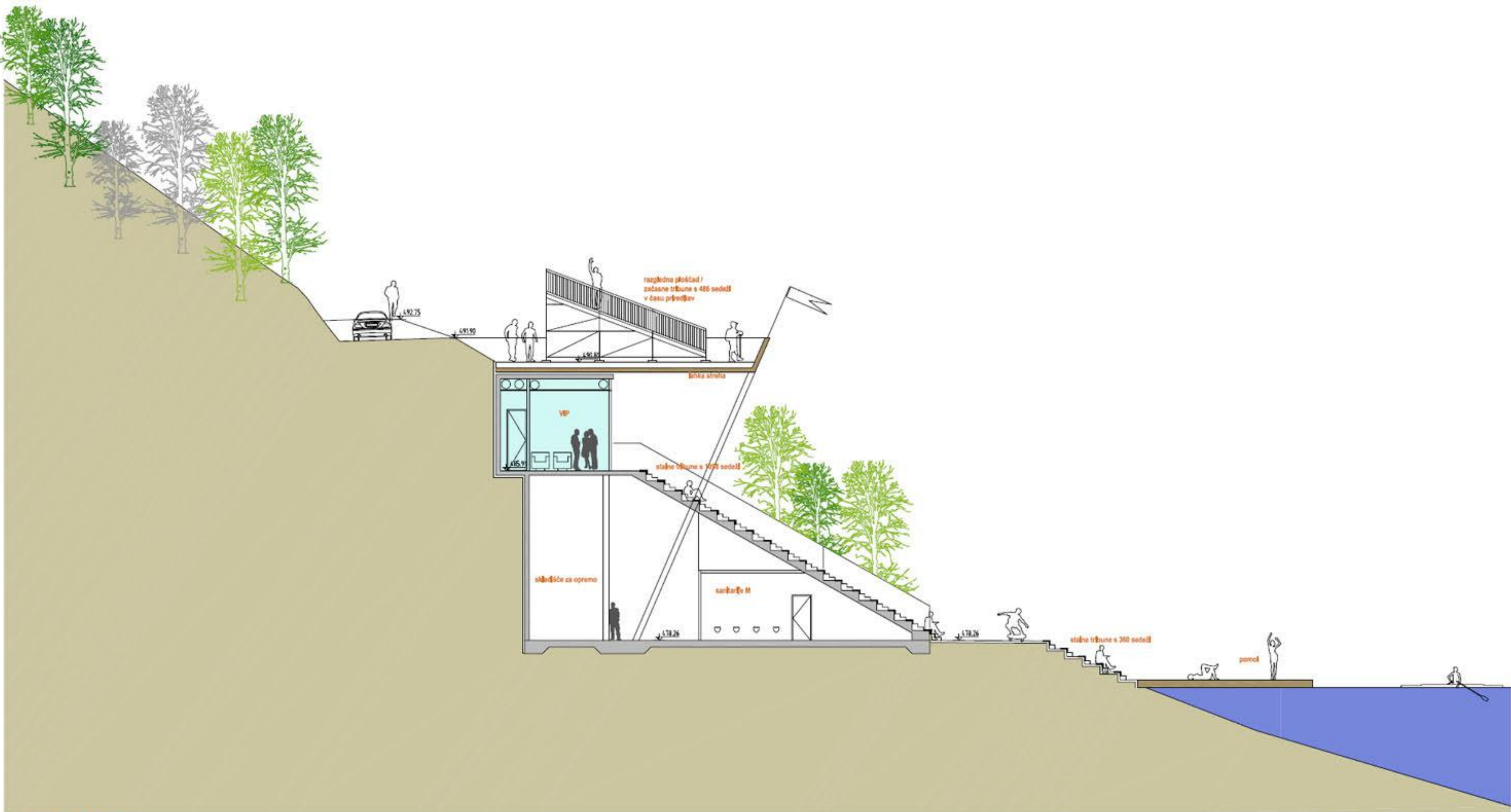
SODNIŠKA ETIŽA  
OBESENA MONTAZNA  
LESENA KONSTRUKCIJA

RAZLEDNAJ STOLP  
V OBLINI ARENI



STOLP V OBLINI ARENI  
MED REGATO





prerez A-A 1:100

