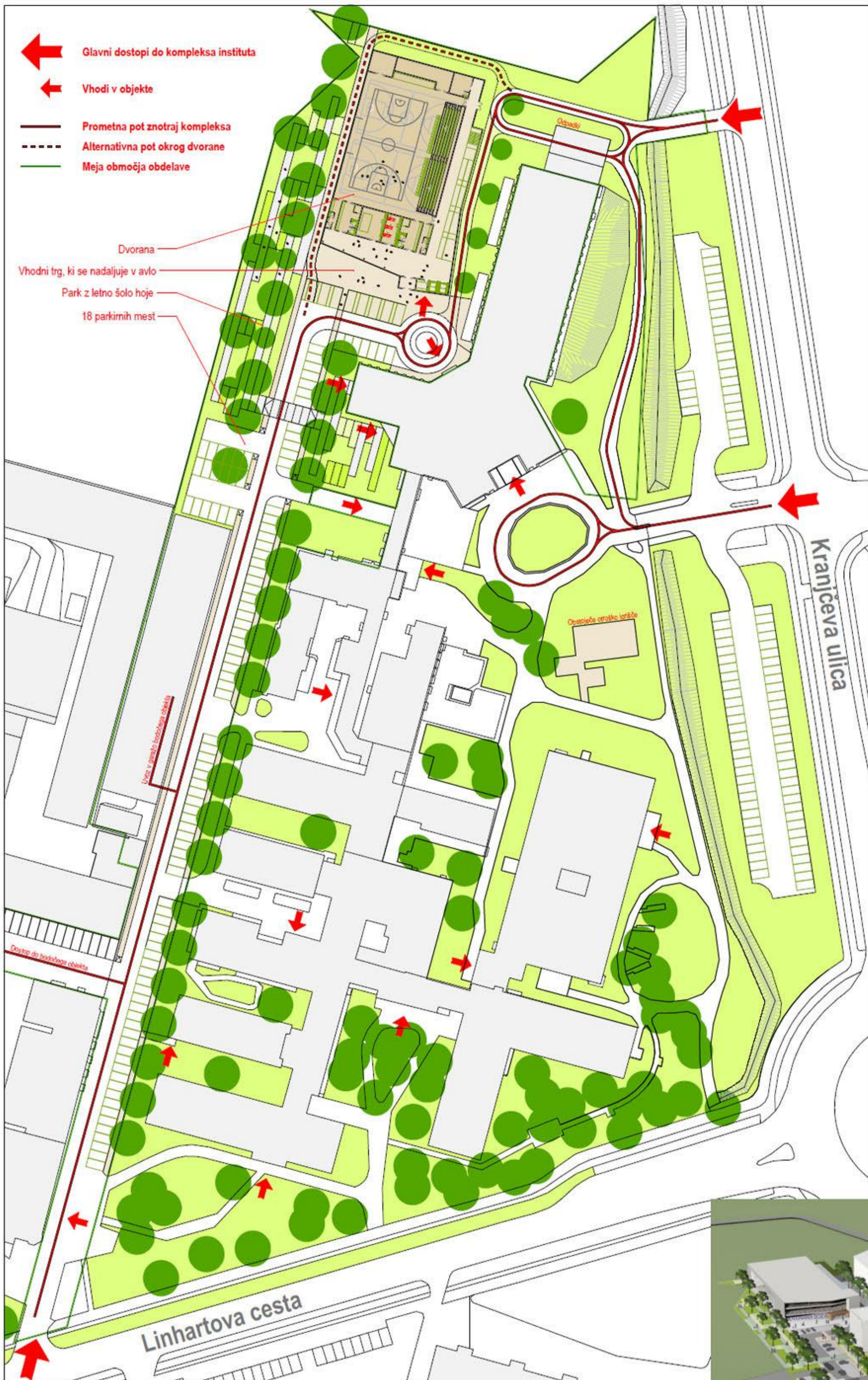


-  Glavni dostopi do kompleksa instituta
-  Vhodi v objekte
-  Prometna pot znotraj kompleksa
-  Alternativna pot okrog dvorane
-  Meja območja obdelave

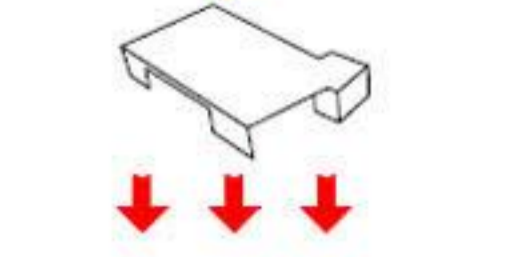
- Dvorana
- Vhodni trg, ki se nadaljuje v avlo
- Park z letno šolo hoje
- 18 parkirnih mest



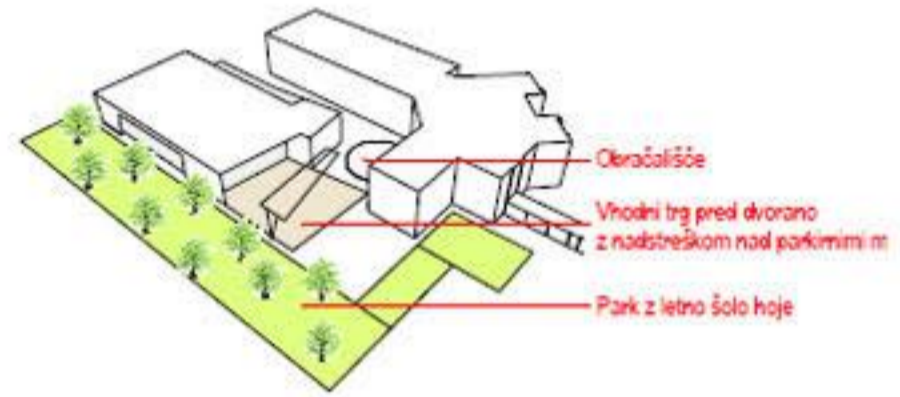
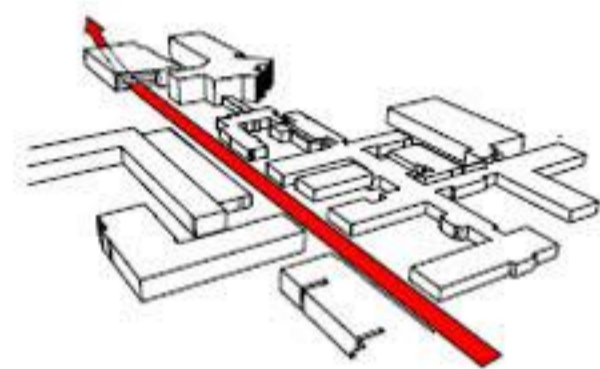
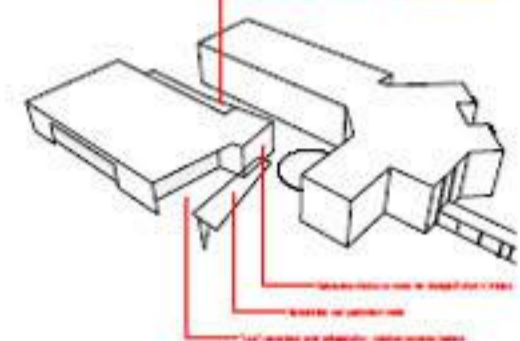
Situacija s prometno in zunanjo ureditvijo, M 1:500



Potreben volumen za umestitev vseh zahtevanih programov



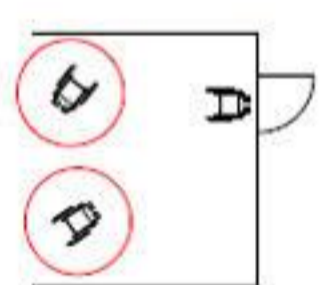
"Vmesnik", ki volumen prilagodi na robne pogoje okolice



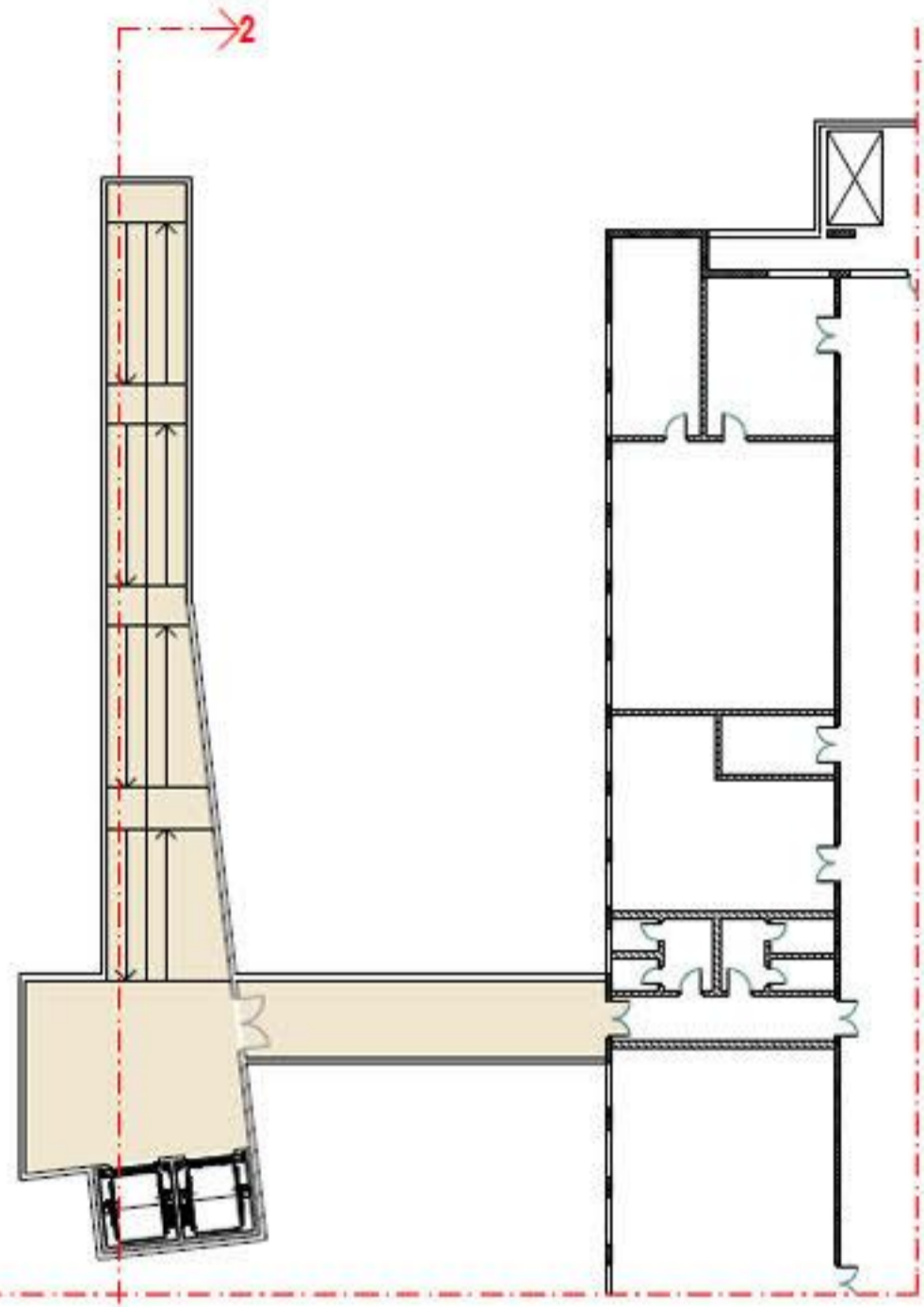
- Otročališče
- Vhodni trg pred dvorano z nadstreškom nad parkirnimi m
- Park z letno šolo hoje

Dolge in neprijetne, čeprav morda dovolj široke, hodnike

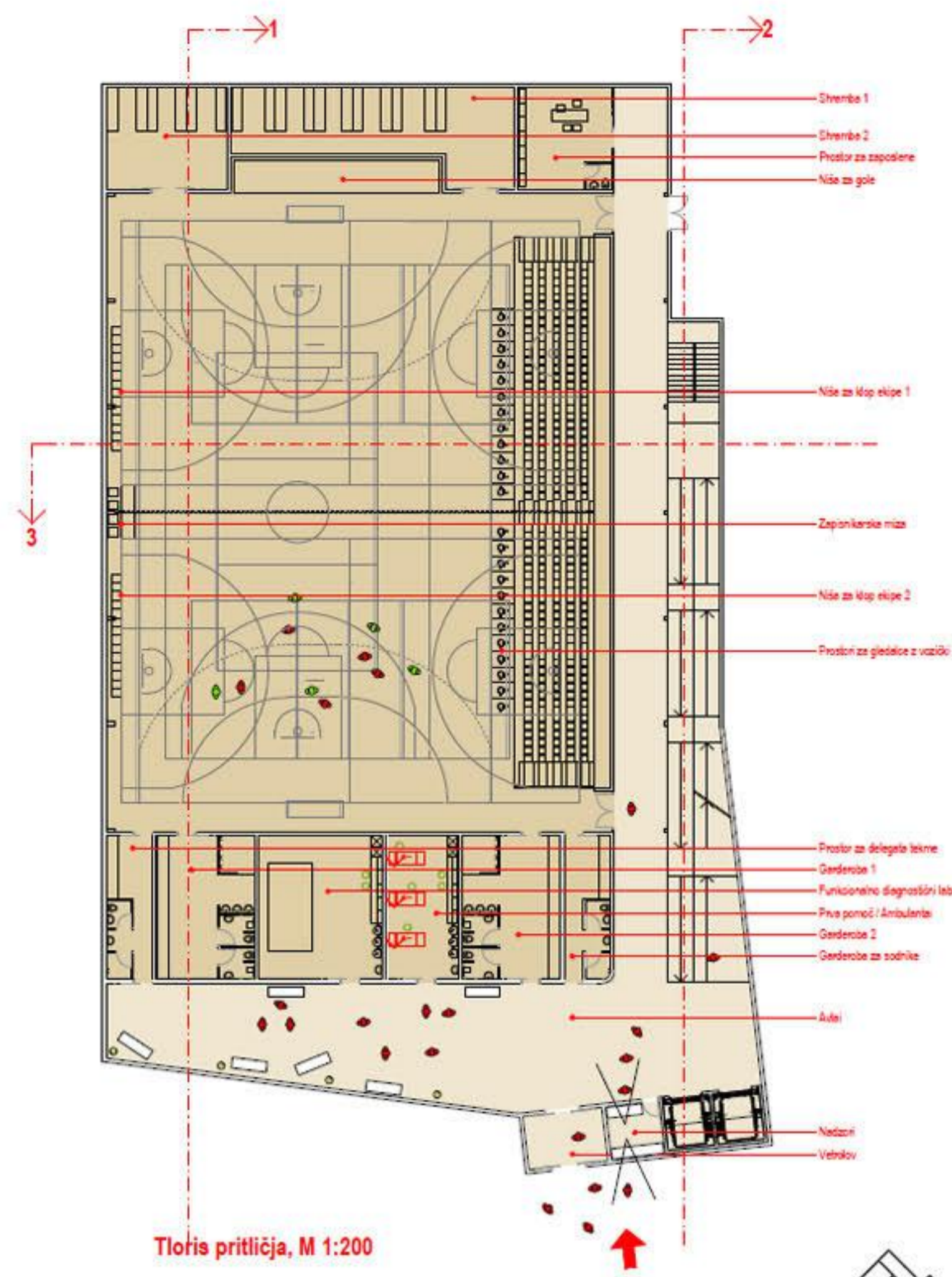
s širokimi in svetlimi komunikacijami - avla nadomestimo





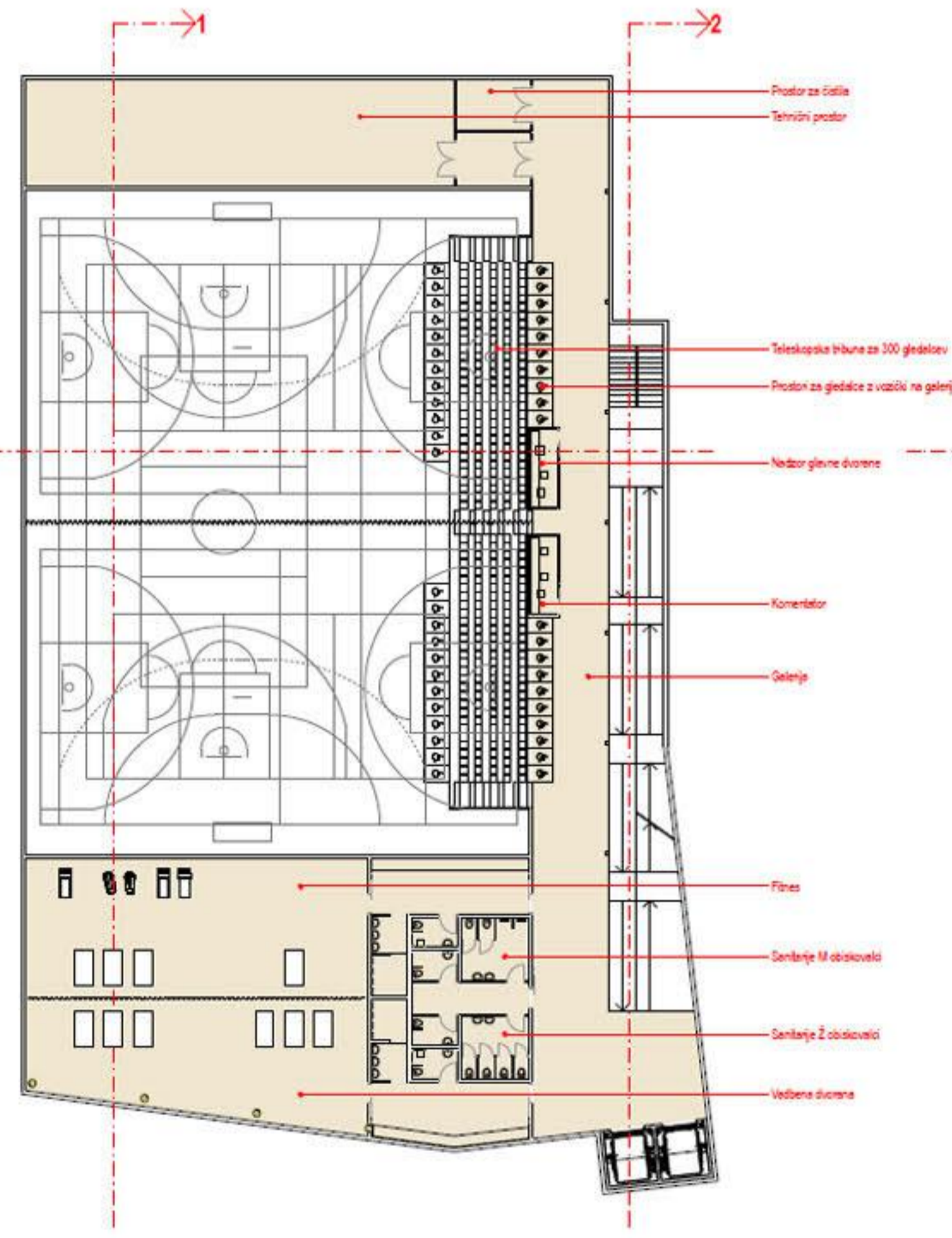
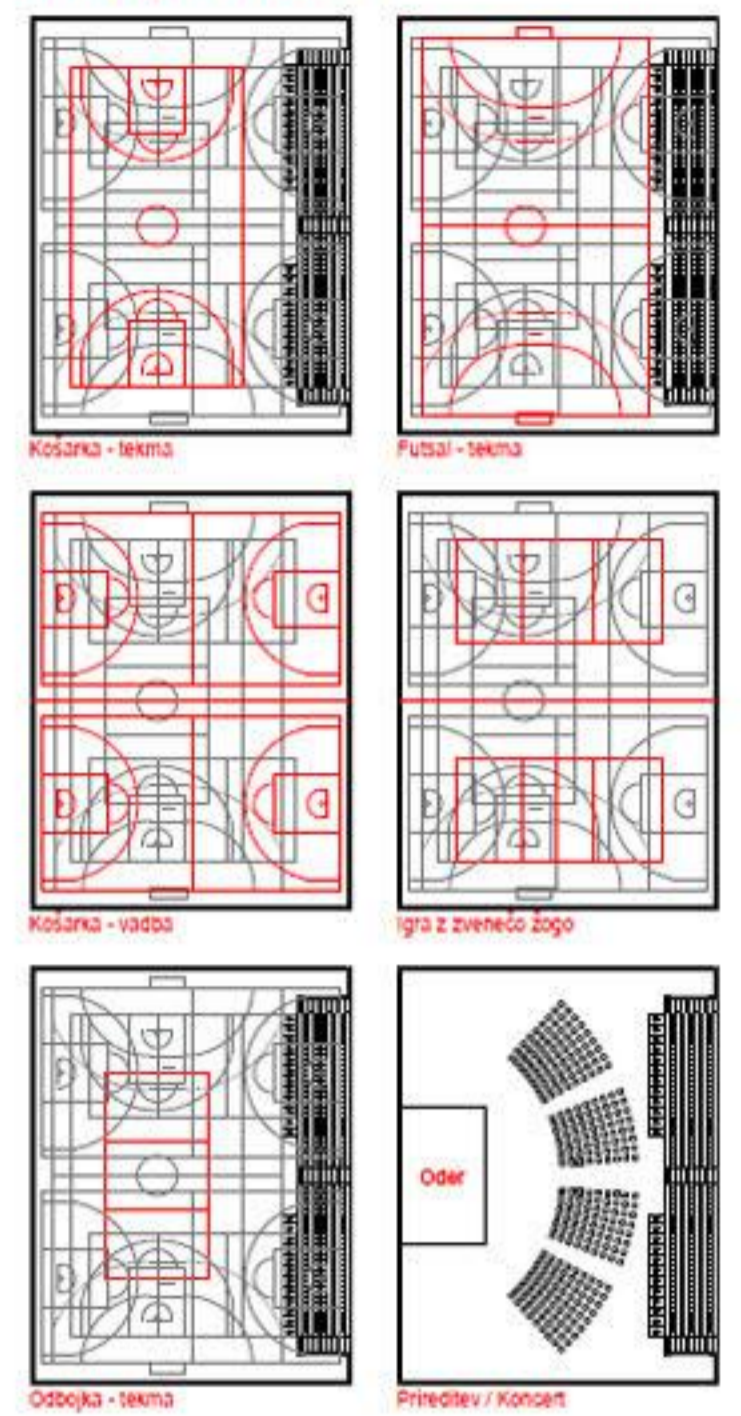


Tloris kleti, M 1:200

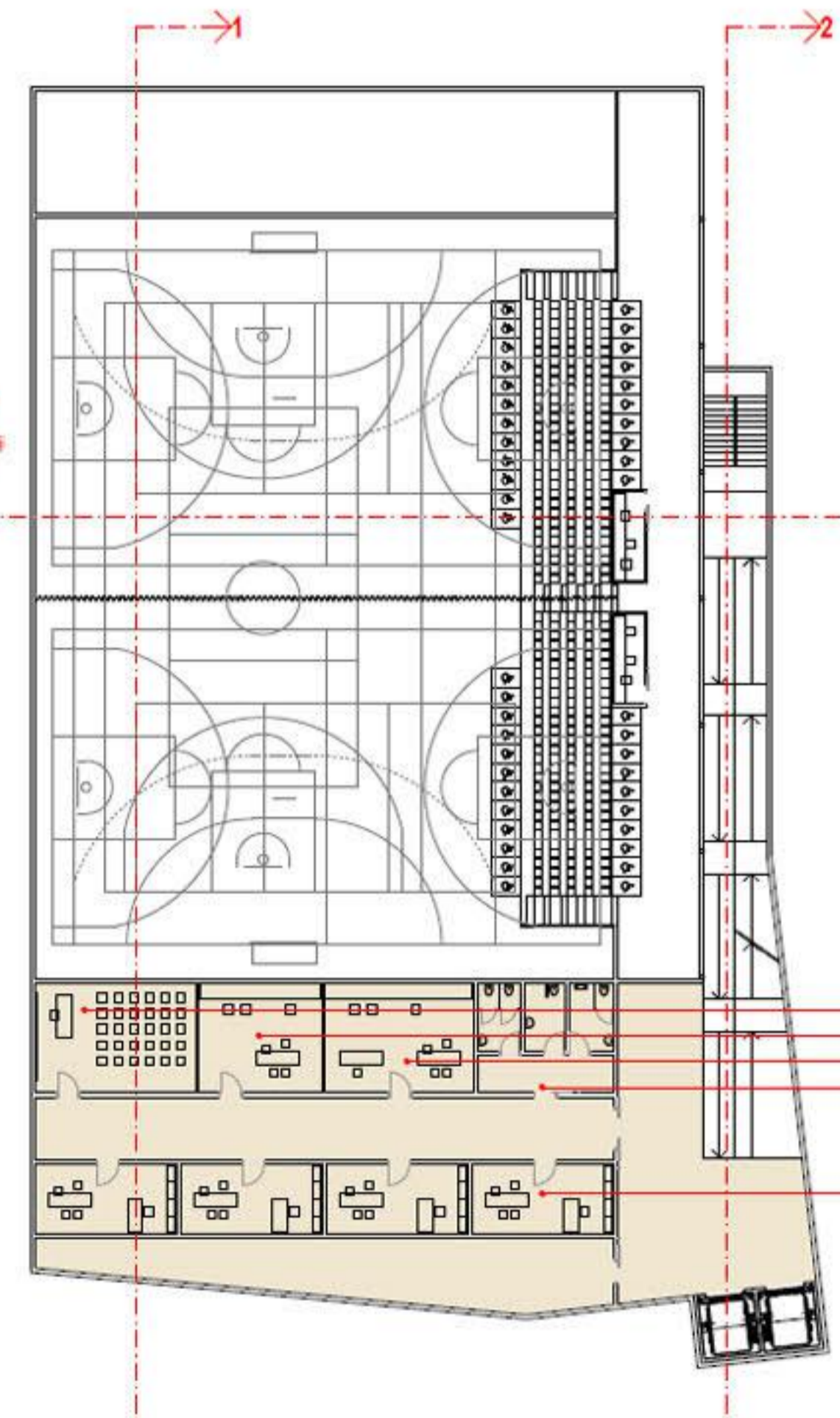


Tloris pritličja, M 1:200

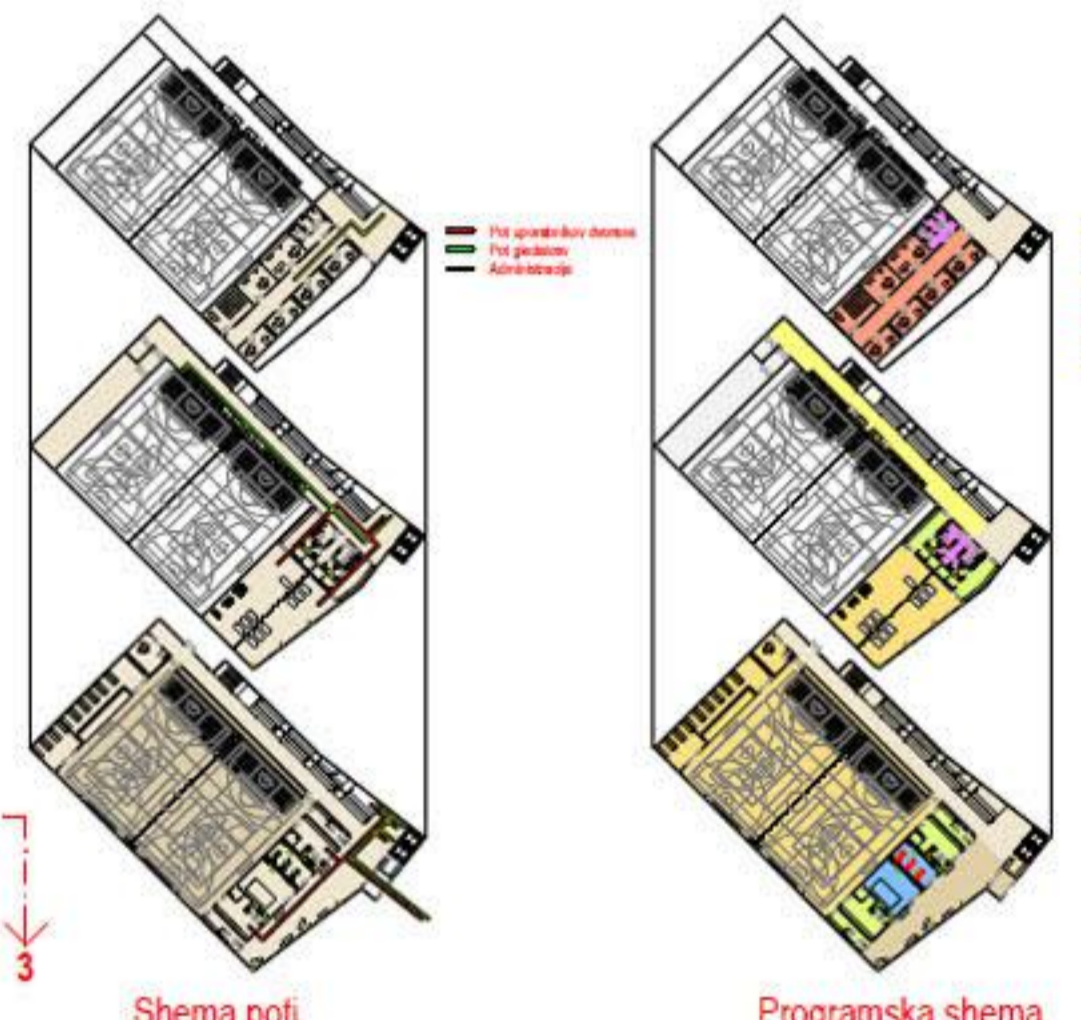
Shema igrišč in tribune



Tloris 1. nadstropja, M 1:200

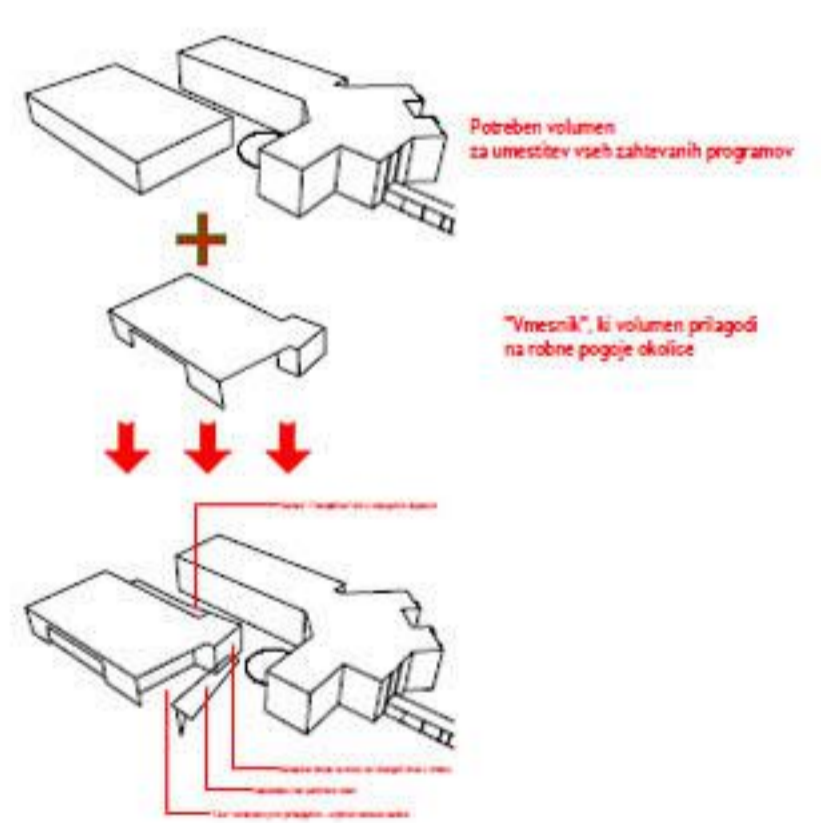


Tloris 2. nadstropja, M 1:200



Shema poti

Programska shema

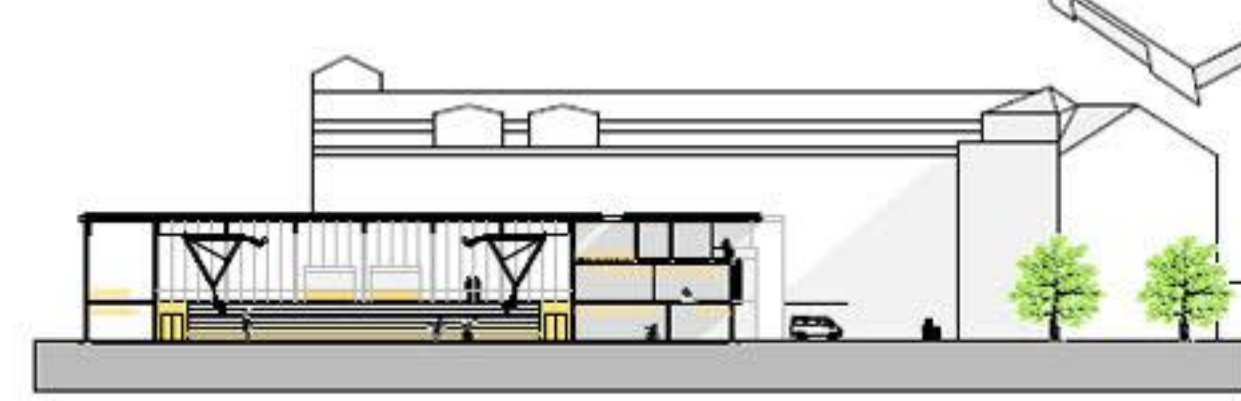


Potrebni volumen za umestitev vseh zahtevanih programov

"Vmesnik", ki volumen prilagodi na robne pogoje okolice

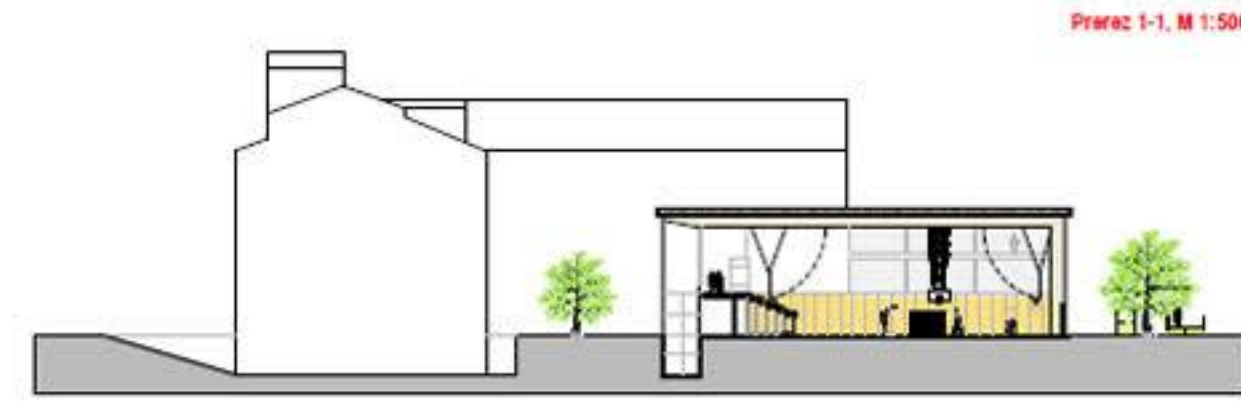
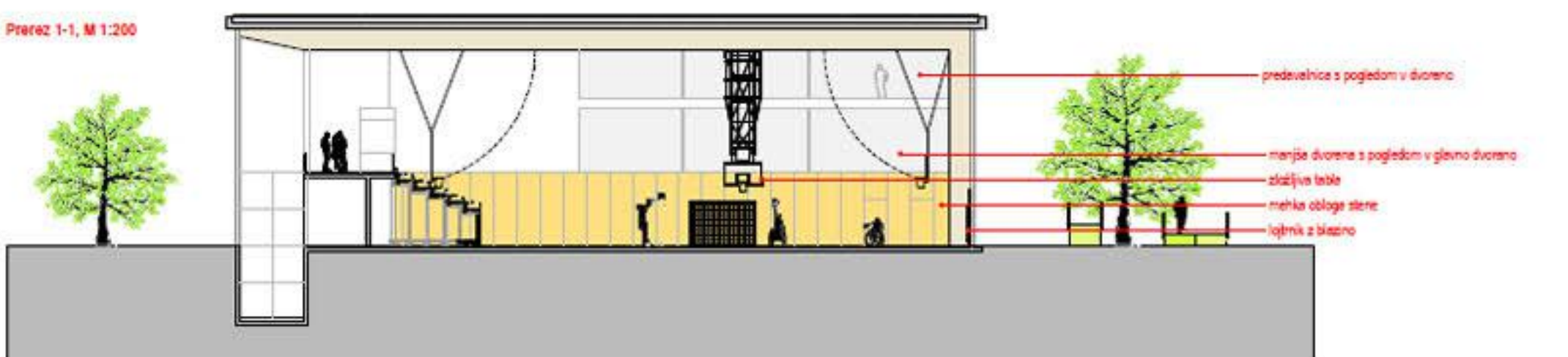






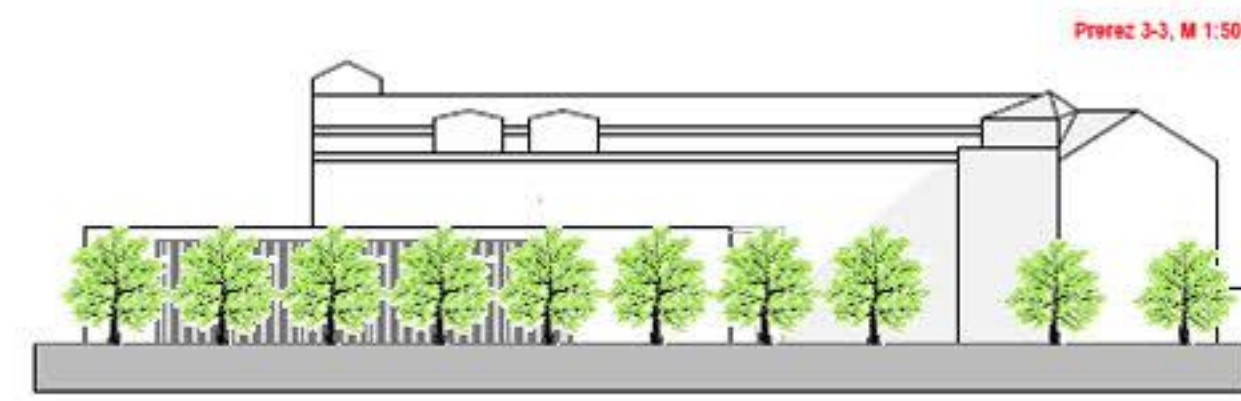
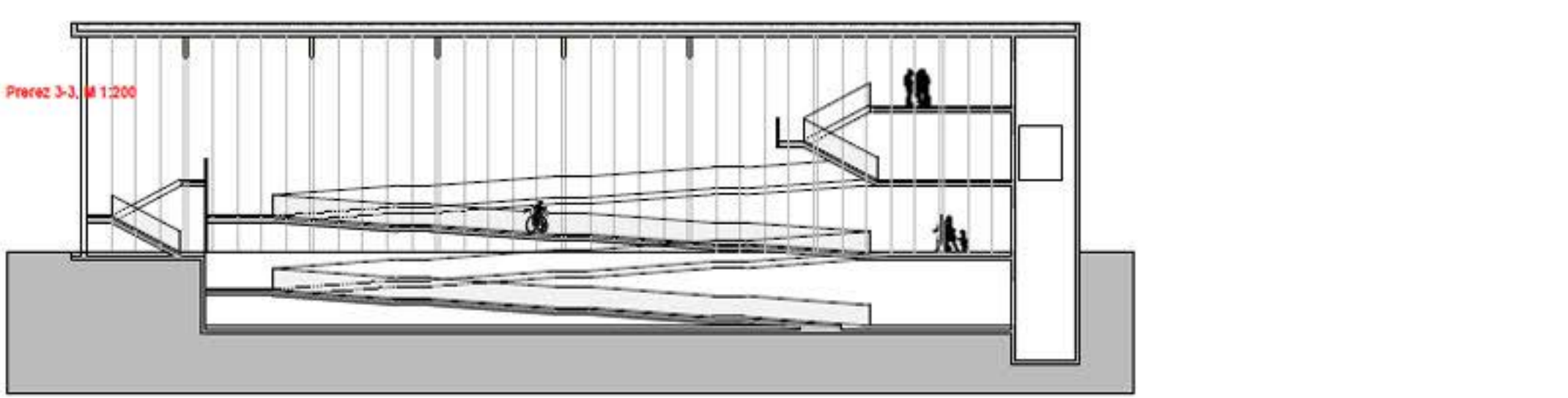
Prerez 1-1, M 1:200

Prerez 1-1, M 1:500



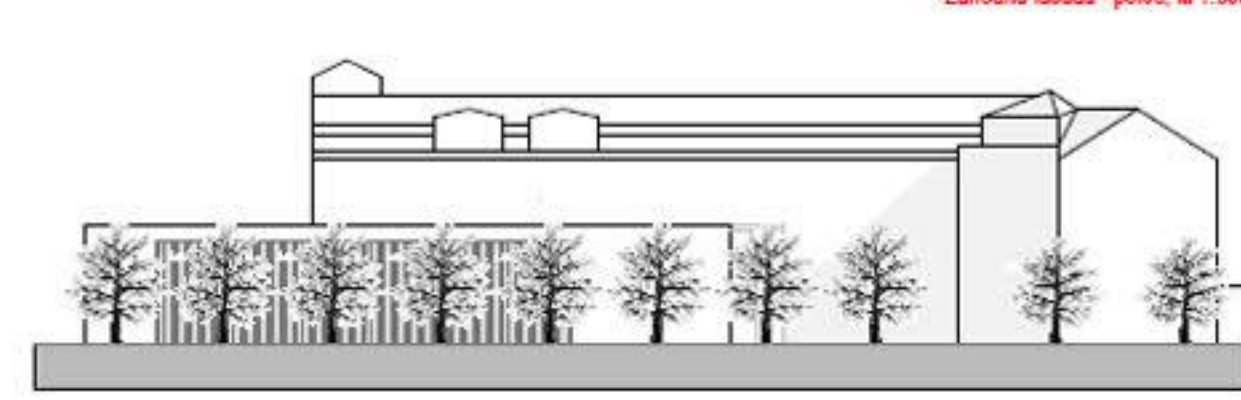
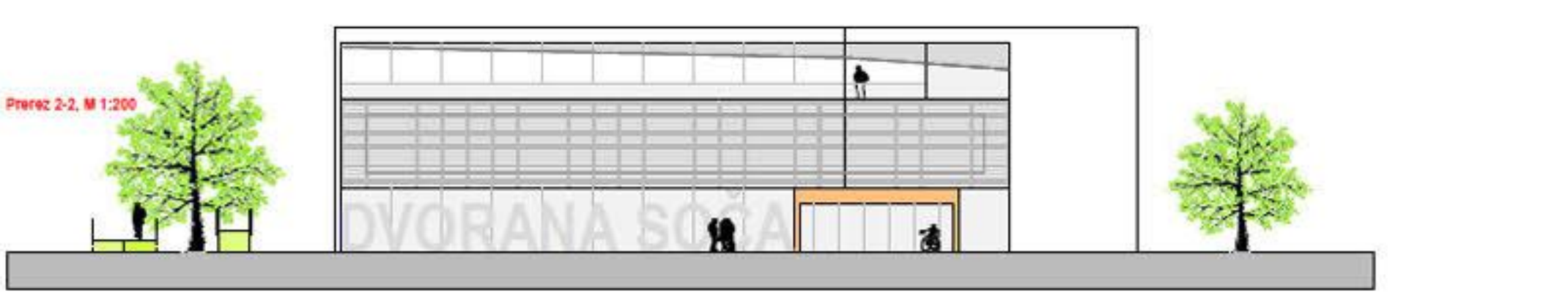
Prerez 3-3, M 1:200

Prerez 3-3, M 1:500



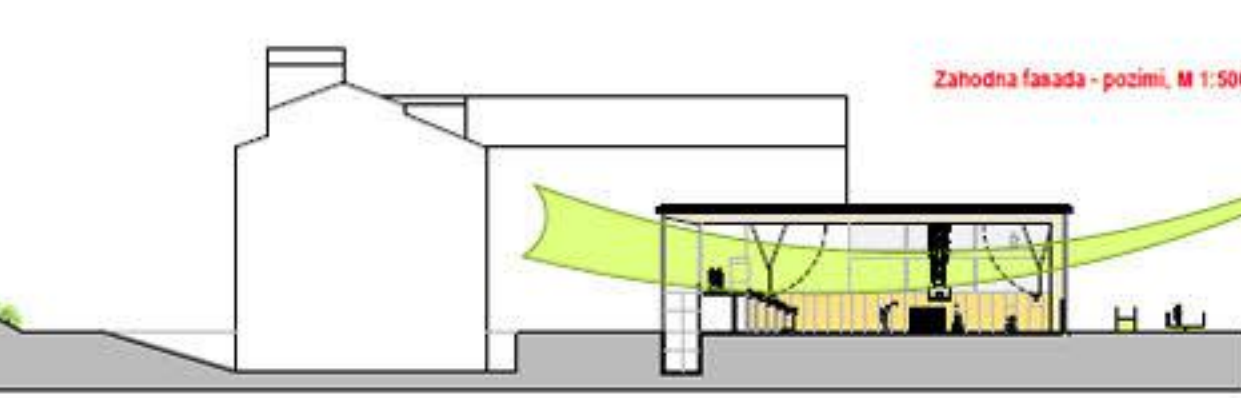
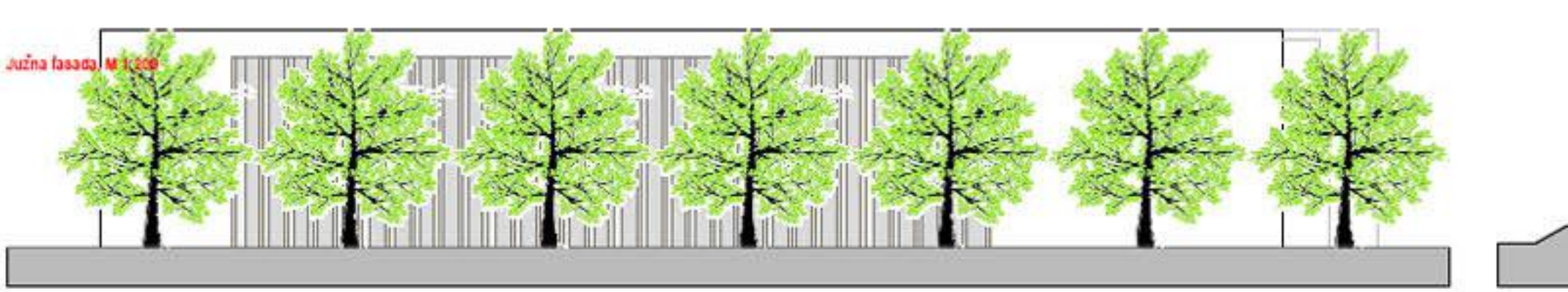
Prerez 2-2, M 1:200

Zahodna fasada - poleli, M 1:500

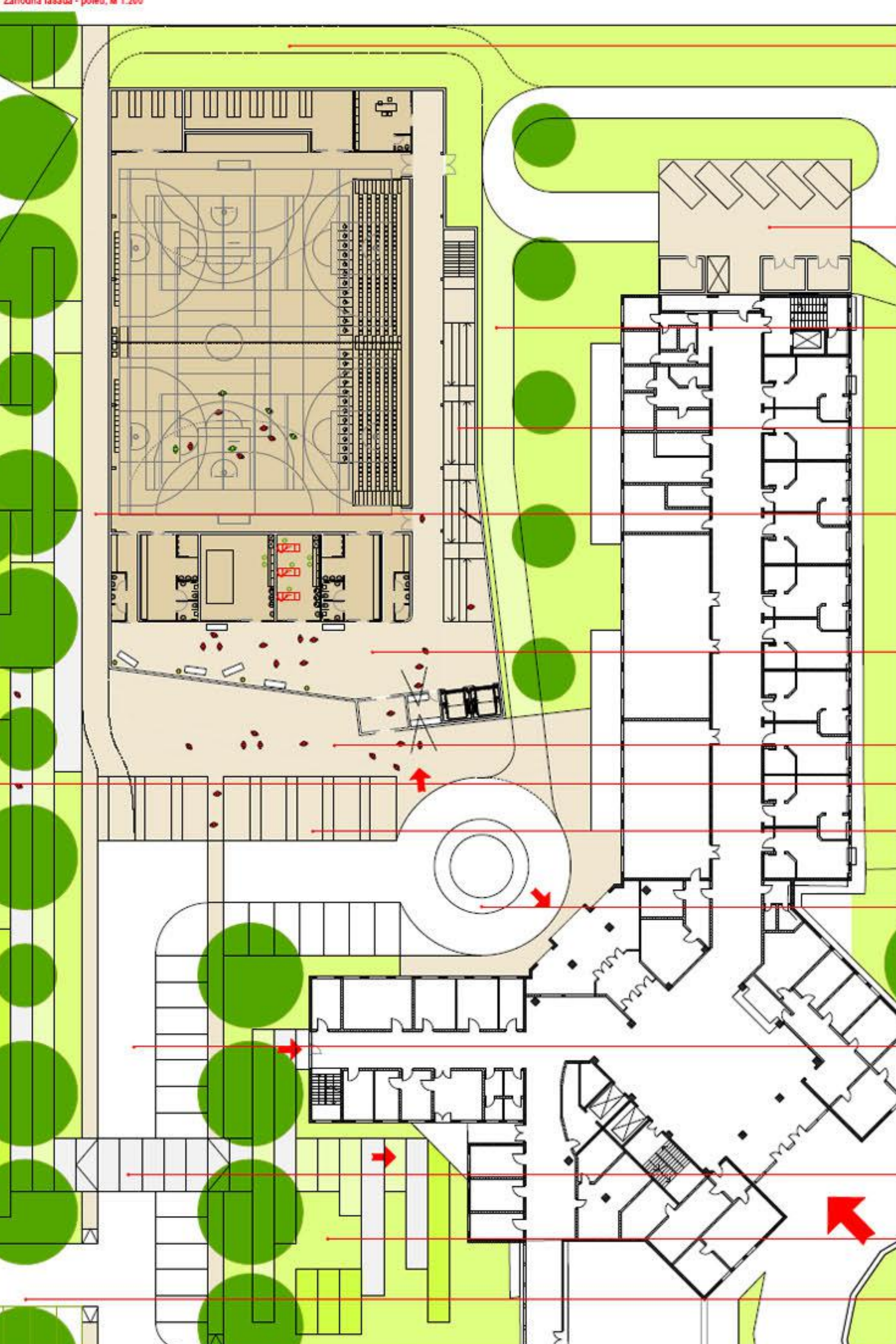


Južna fasada M 1:200

Zahodna fasada - pozimi, M 1:500



Zahodna fasada - poleli, M 1:200



- možnost dovoza okrog dvorane
- prostor za odpadke
- možnost dovoza do dvorane
- vertikalne komunikacije
- možnost dovoza okrog dvorane
- avla dvorane kot del vhodnega trga
- trg
- park z letno šolo hoje
- nadkita parkirišča za kombinirana vozila pred vhomom v dvorano
- corčališče
- glavni dostop do dvorane
- povezava do glavnega dela parka
- park z neposrednim dostopom iz objekta Vrtnica in povezavo do glavnega dela parka
- sočna parkirišča - 18PM

Zunanja ureditev, M 1:250

