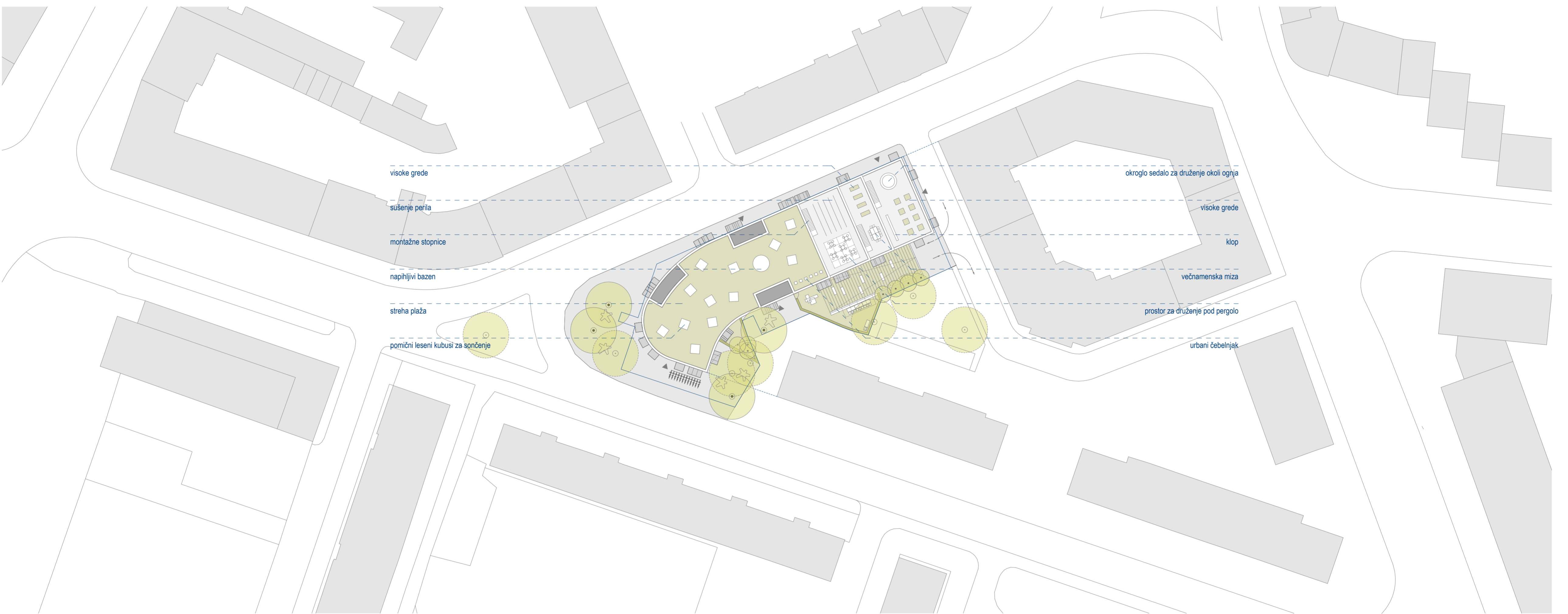
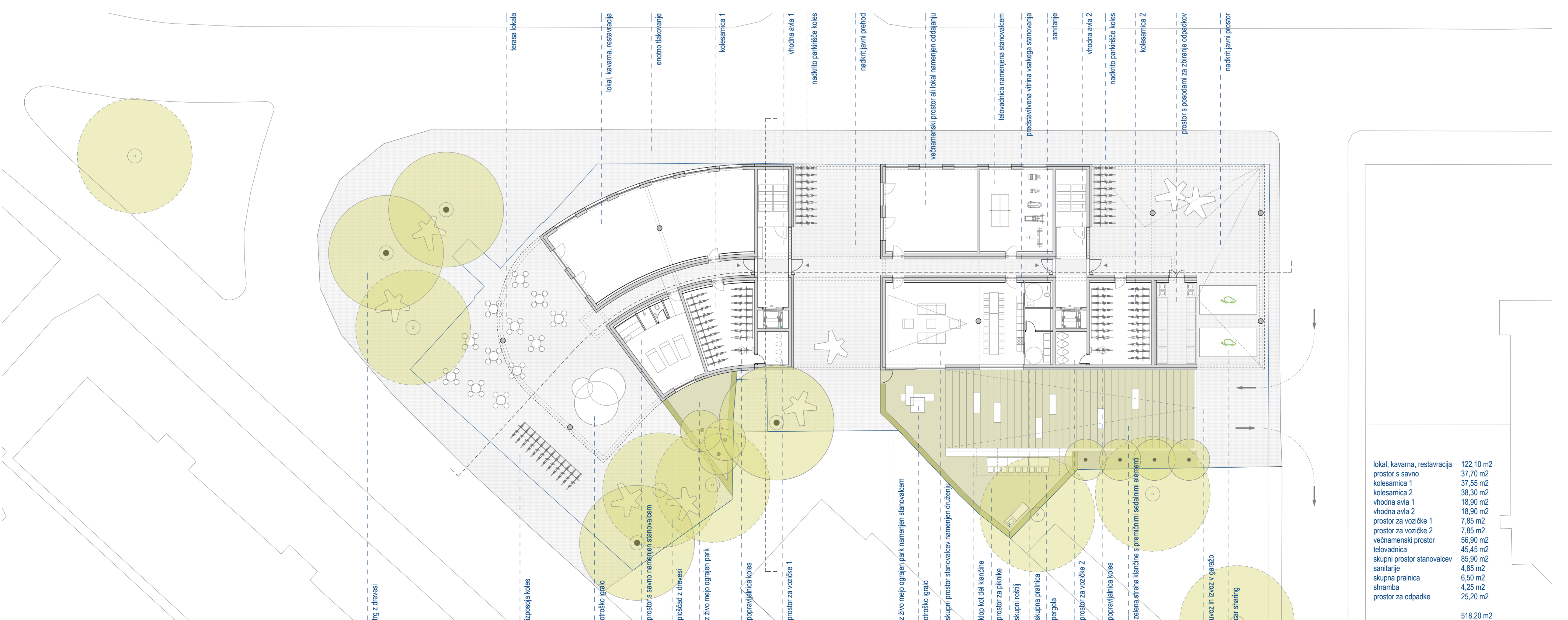




urbanistična aksonometrija

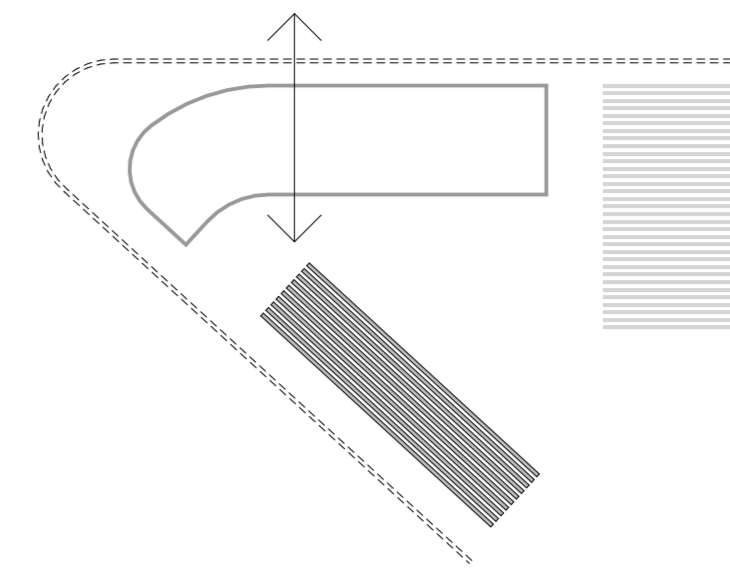
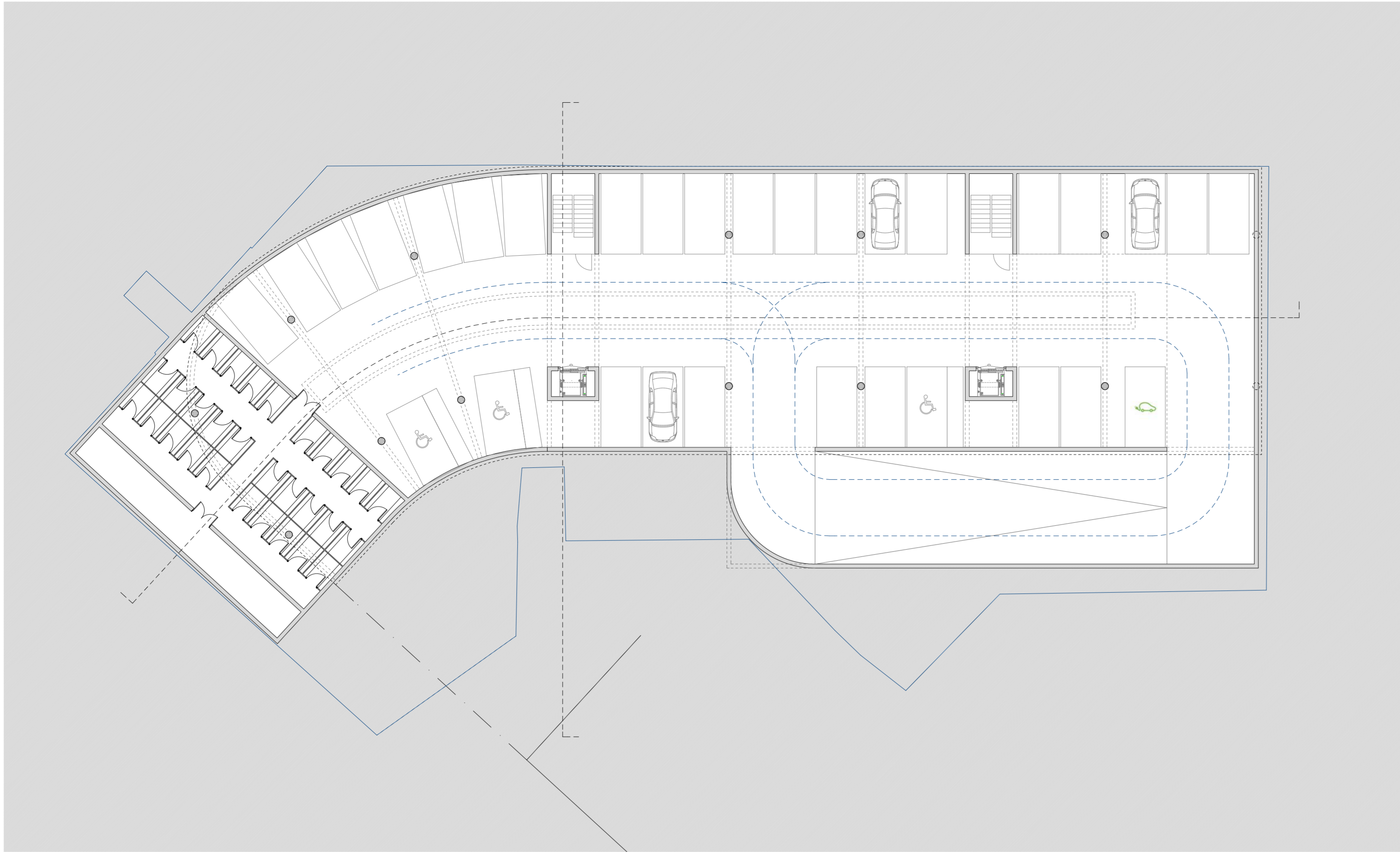


☉ situacija M 1:500

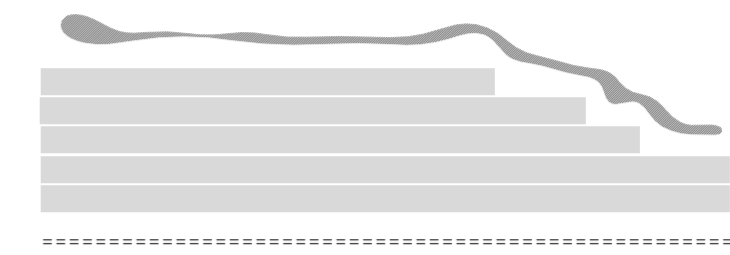


| | |
|-------------------------------|-----------------------------|
| lokali, kavarna, restavracija | 122,10 m ² |
| prostor s savno | 37,70 m ² |
| kolesarnica 1 | 37,55 m ² |
| kolesarnica 2 | 38,30 m ² |
| vhodna avla 1 | 18,90 m ² |
| vhodna avla 2 | 18,90 m ² |
| prostor za vozčke 1 | 7,85 m ² |
| prostor za vozčke 2 | 7,85 m ² |
| večnamenski prostor | 56,90 m ² |
| telovadnica | 45,45 m ² |
| skupni prostor stanovanstev | 85,90 m ² |
| sanitarnije | 4,85 m ² |
| skupna pralnica | 6,50 m ² |
| stramba | 4,25 m ² |
| prostor za odpadke | 25,20 m ² |
| skupaj | 518,20 m² |

☉ tloris pritličja M 1:200

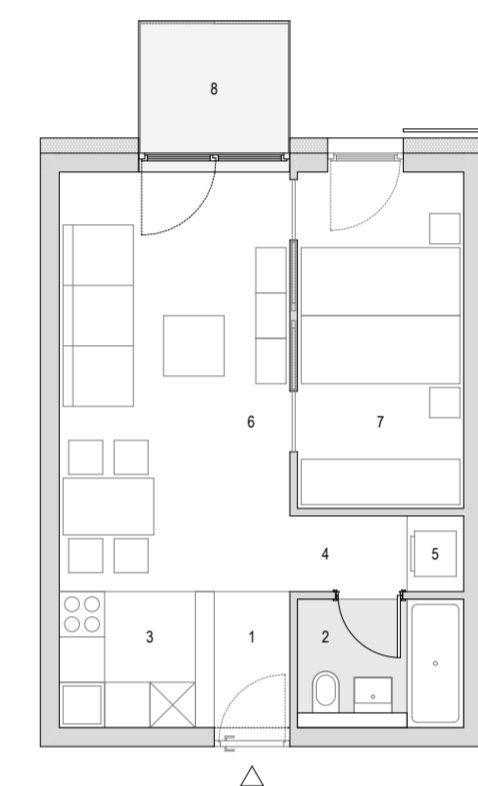
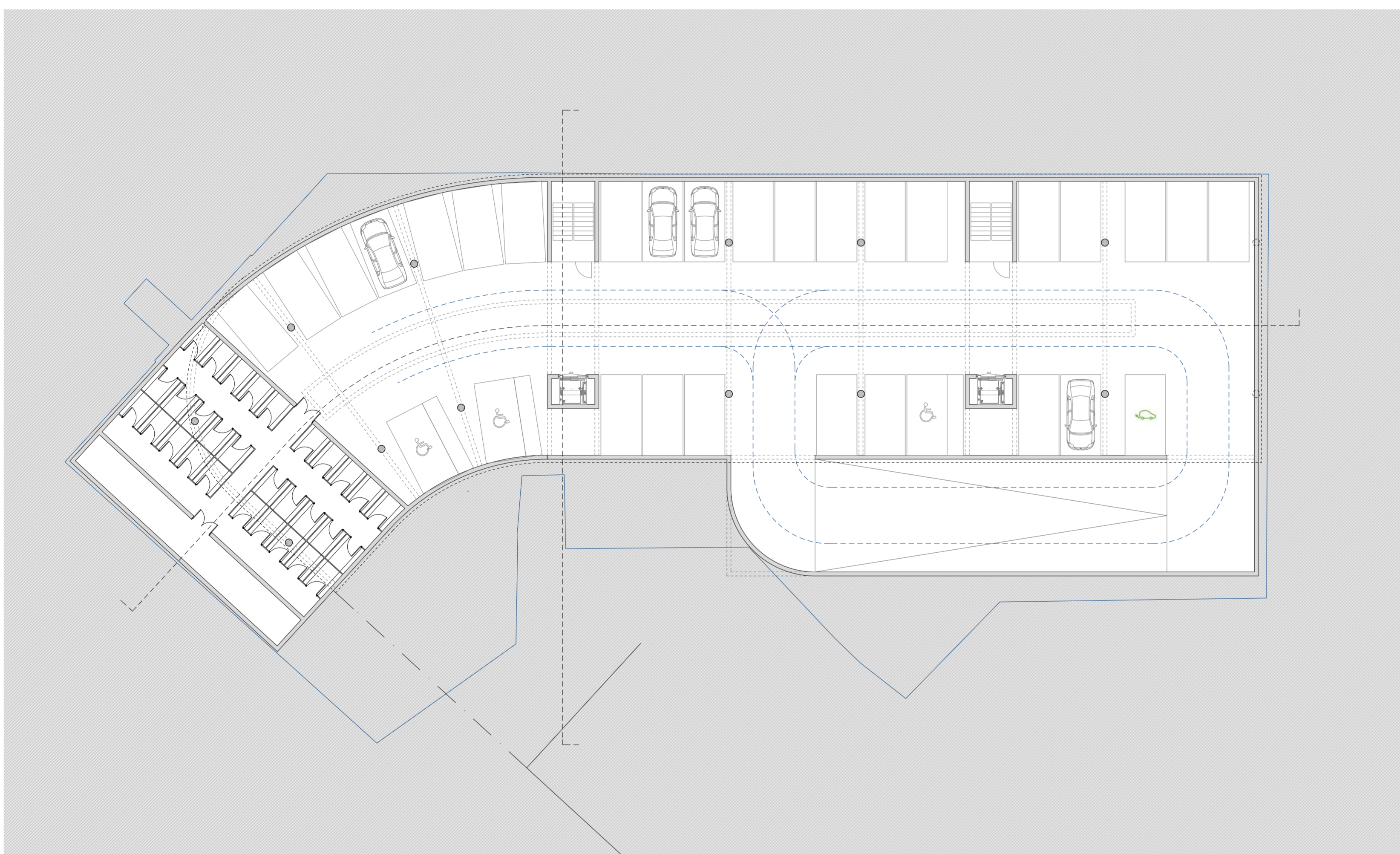


zasnova izhaja iz geometrije okolice



zelena streha kot urbana krajina za različne družabne aktivnosti
stanovanja
priliječe ob prometni cesti kot prostor druženja

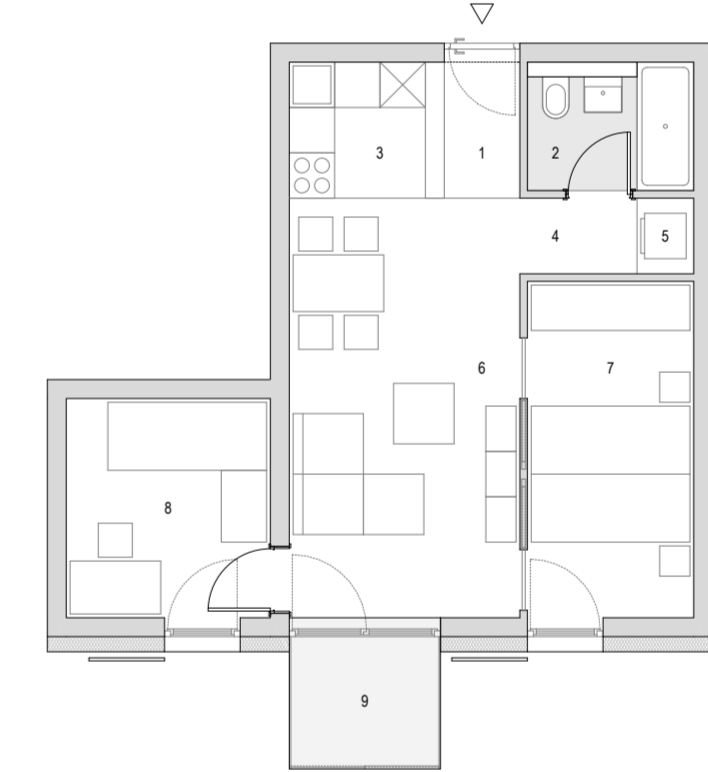
tloris kleti 1 M 1:200



tip 1 - 1.5 sobno - 3x

| | |
|------------------|----------------------------|
| 1 predprostor | 2,25 m ² |
| 2 kopalnica | 3,45 m ² |
| 3 kuhinja | 3,25 m ² |
| 4 hodnik | 1,55 m ² |
| 5 shramba | 0,75 m ² |
| 6 dnevni prostor | 16,90 m ² |
| 7 spalnica | 9,80 m ² |
| skupaj | 37,95 m² |

| | |
|--------------|---------------------|
| 8 žilski vrt | 3,35 m ² |
|--------------|---------------------|

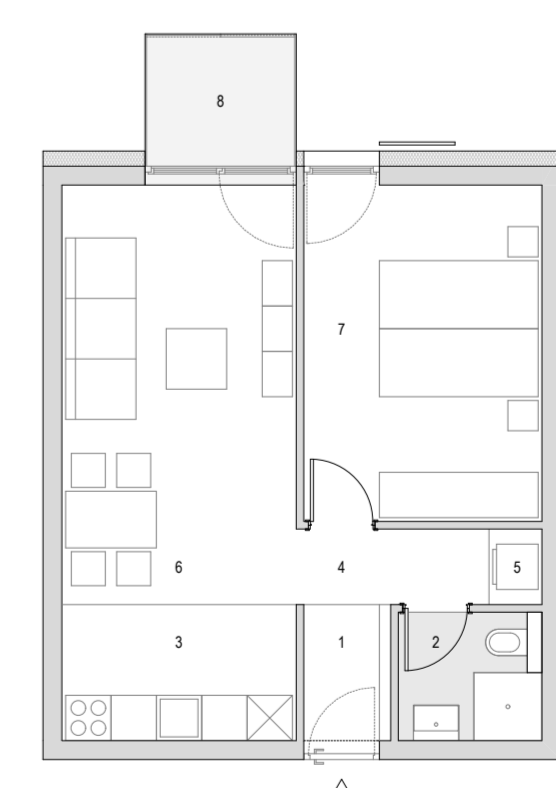
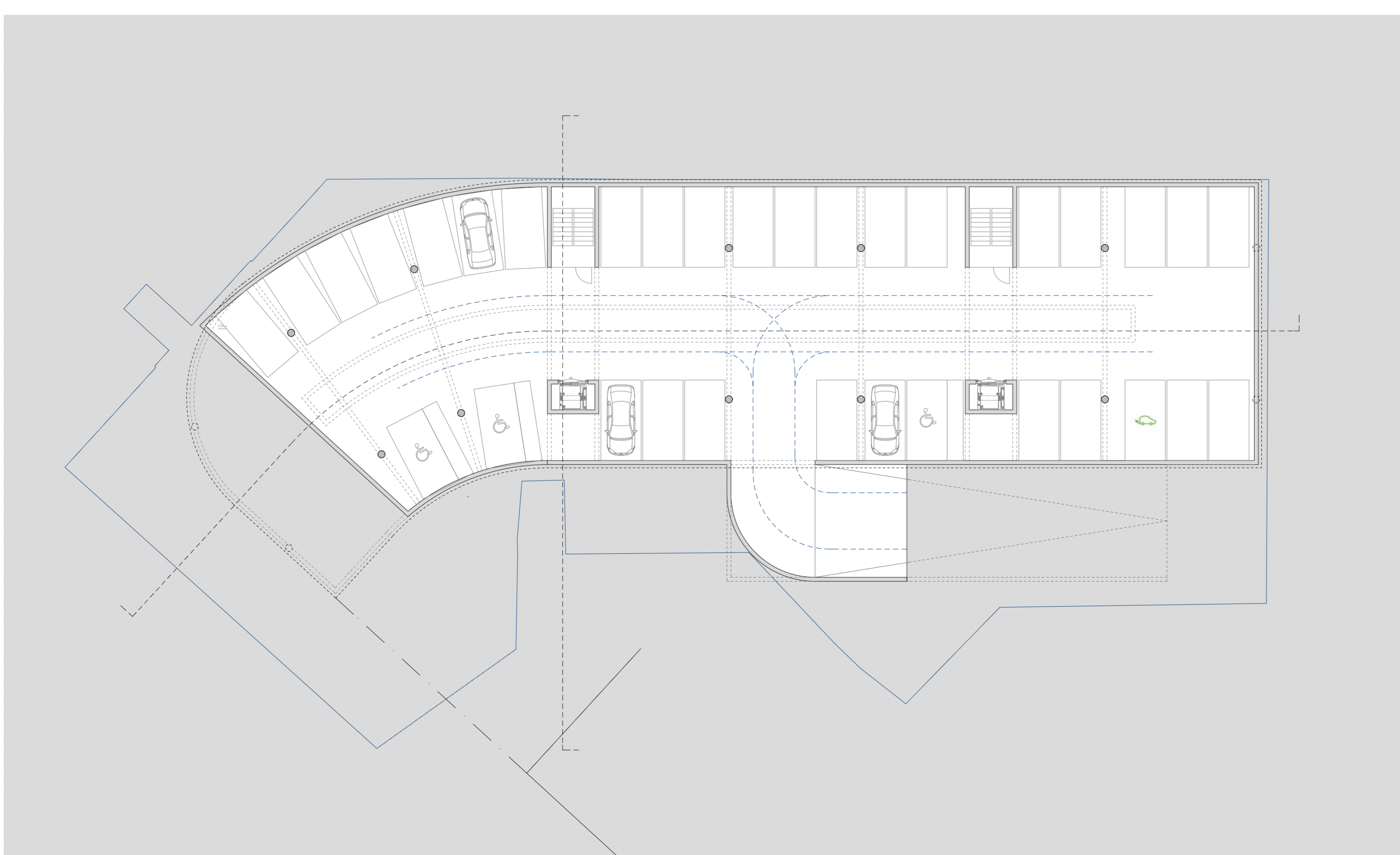


tip 1* - 1.5 sobno - 3x

| | |
|------------------|----------------------------|
| 1 predprostor | 2,25 m ² |
| 2 kopalnica | 3,45 m ² |
| 3 kuhinja | 3,25 m ² |
| 4 hodnik | 1,55 m ² |
| 5 shramba | 0,75 m ² |
| 6 dnevni prostor | 16,90 m ² |
| 7 spalnica | 9,80 m ² |
| 8 kabinet | 7,85 m ² |
| skupaj | 45,80 m² |

| | |
|--------------|---------------------|
| 8 žilski vrt | 3,35 m ² |
|--------------|---------------------|

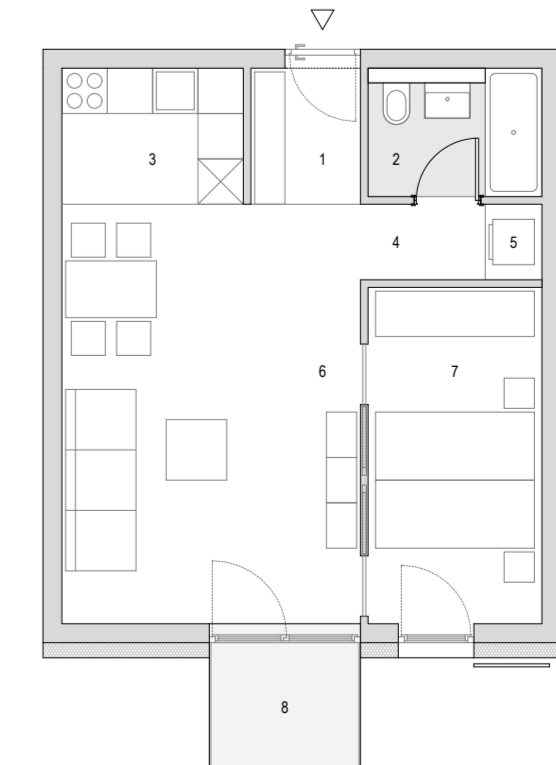
tloris kleti 2 M 1:200



tip 2 - 2 sobno - 4x

| | |
|------------------|----------------------------|
| 1 predprostor | 2,05 m ² |
| 2 kopalnica | 3,05 m ² |
| 3 kuhinja | 5,60 m ² |
| 4 hodnik | 2,55 m ² |
| 5 shramba | 0,70 m ² |
| 6 dnevni prostor | 17,20 m ² |
| 7 spalnica | 14,00 m ² |
| skupaj | 45,15 m² |

| | |
|--------------|---------------------|
| 8 žilski vrt | 3,35 m ² |
|--------------|---------------------|



tip 2 - 2 sobno - 4x

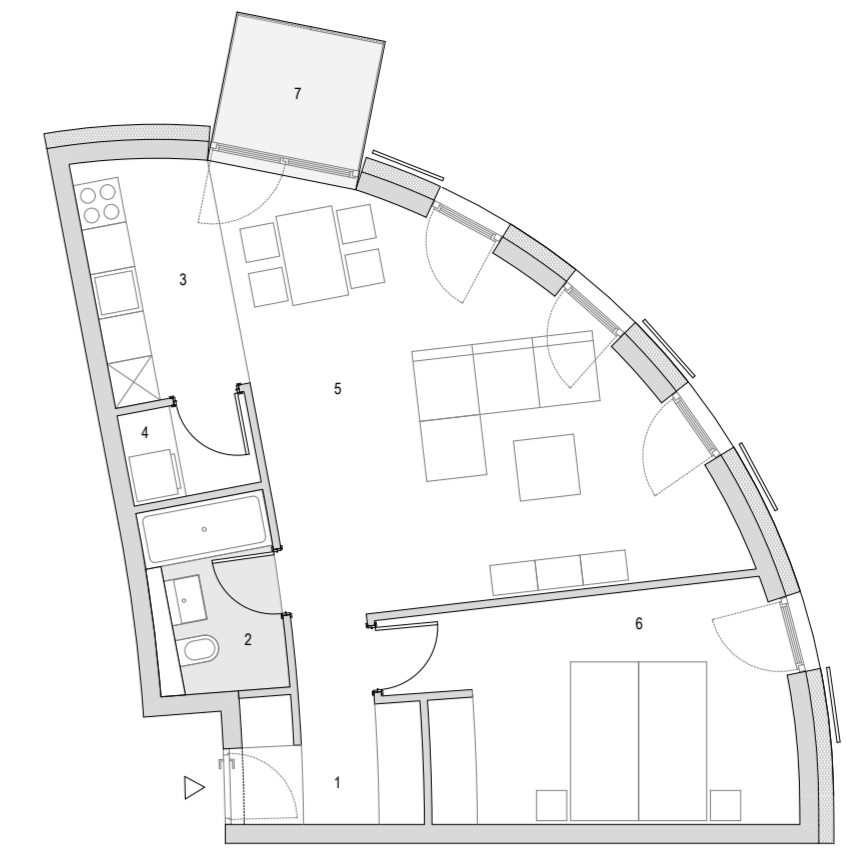
| | |
|------------------|----------------------------|
| 1 predprostor | 2,60 m ² |
| 2 kopalnica | 3,60 m ² |
| 3 kuhinja | 4,30 m ² |
| 4 hodnik | 1,65 m ² |
| 5 shramba | 0,75 m ² |
| 6 dnevni prostor | 21,90 m ² |
| 7 spalnica | 10,25 m ² |
| skupaj | 45,05 m² |

| | |
|--------------|---------------------|
| 8 žilski vrt | 3,35 m ² |
|--------------|---------------------|

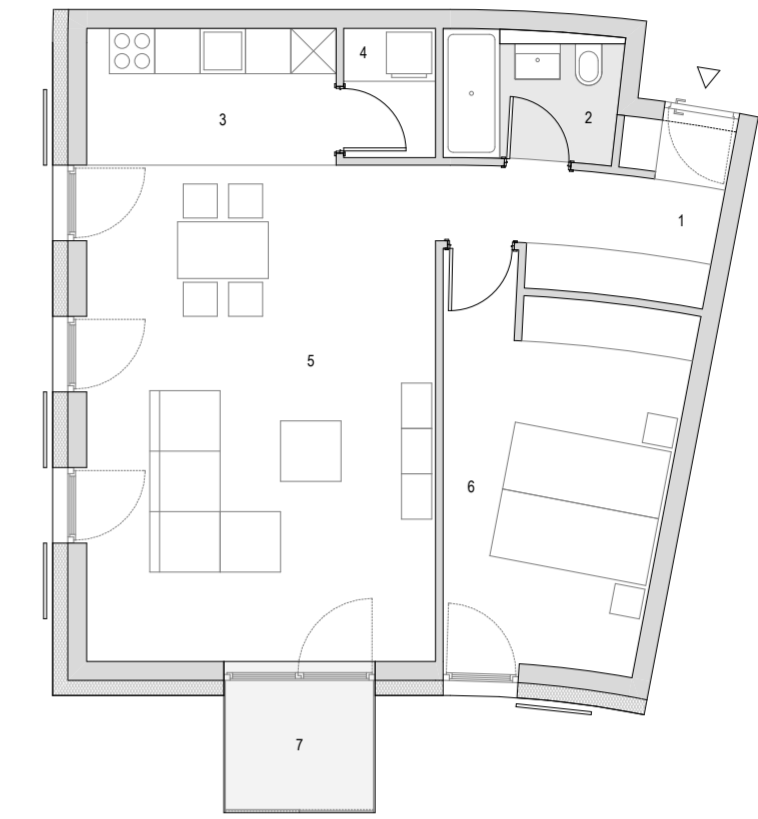
tloris kleti 3 M 1:200



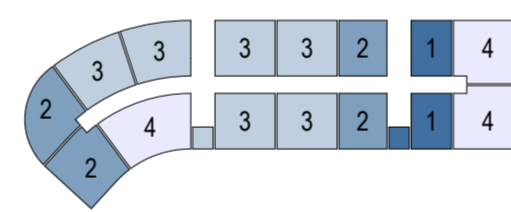
prostorski prikaz iz severozahoda



| tip 2 - 2 sobno - 5x | |
|----------------------|----------------------|
| 1 predprostor | 4,95 m ² |
| 2 kopalnica | 3,90 m ² |
| 3 kuhinja | 5,70 m ² |
| 4 shramba, utility | 2,05 m ² |
| 5 dnevni prostor | 27,05 m ² |
| 6 spalnica | 15,05 m ² |
| | 58,70 m ² |
| 7 zimski vrt | 3,35 m ² |

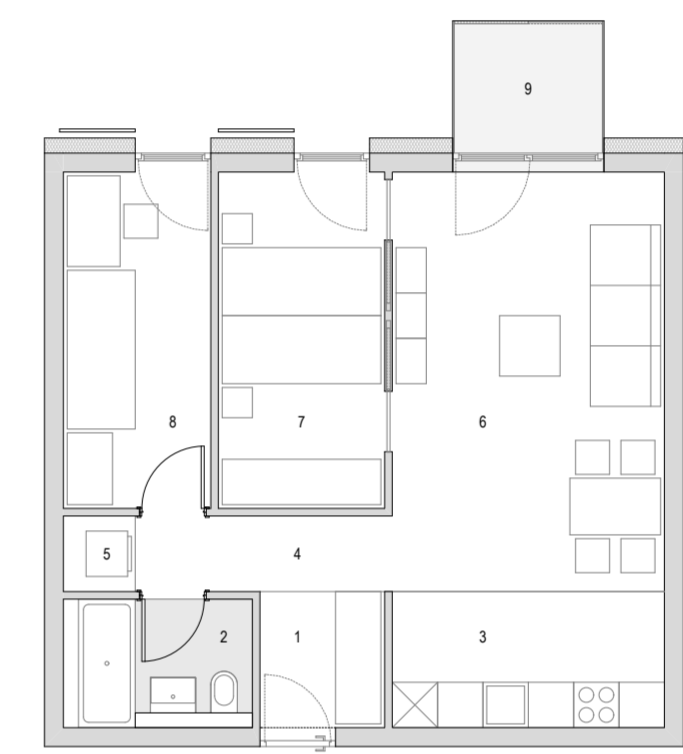


| tip 2 - 2 sobno - 5x | |
|----------------------|----------------------|
| 1 predprostor | 6,30 m ² |
| 2 kopalnica | 3,70 m ² |
| 3 kuhinja | 5,95 m ² |
| 4 shramba, utility | 2,05 m ² |
| 5 dnevni prostor | 30,30 m ² |
| 6 spalnica | 15,00 m ² |
| | 63,30 m ² |
| 7 zimski vrt | 3,35 m ² |

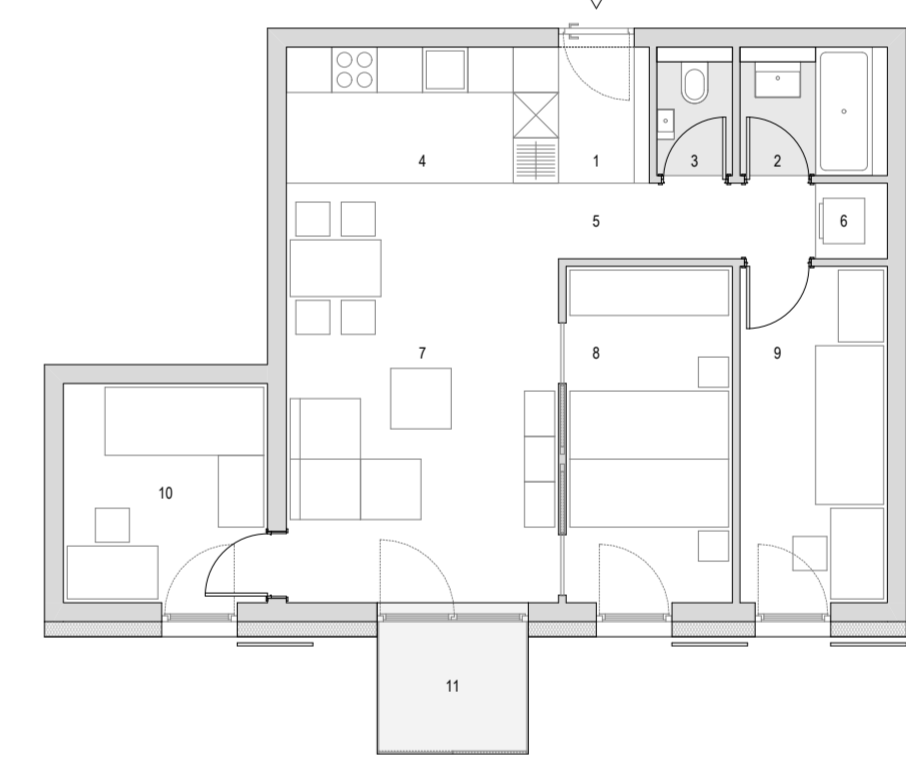


| |
|-------------------|
| tip 1 - 1,5 sobno |
| tip 2 - 2 sobno |
| tip 3 - 2,5 sobno |
| tip 3i - 2 sobno |
| tip 4 - 3,5 sobno |
| tip 4i - 3 sobno |
| tip 5 - 4 sobno |

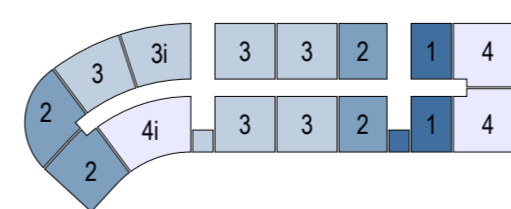
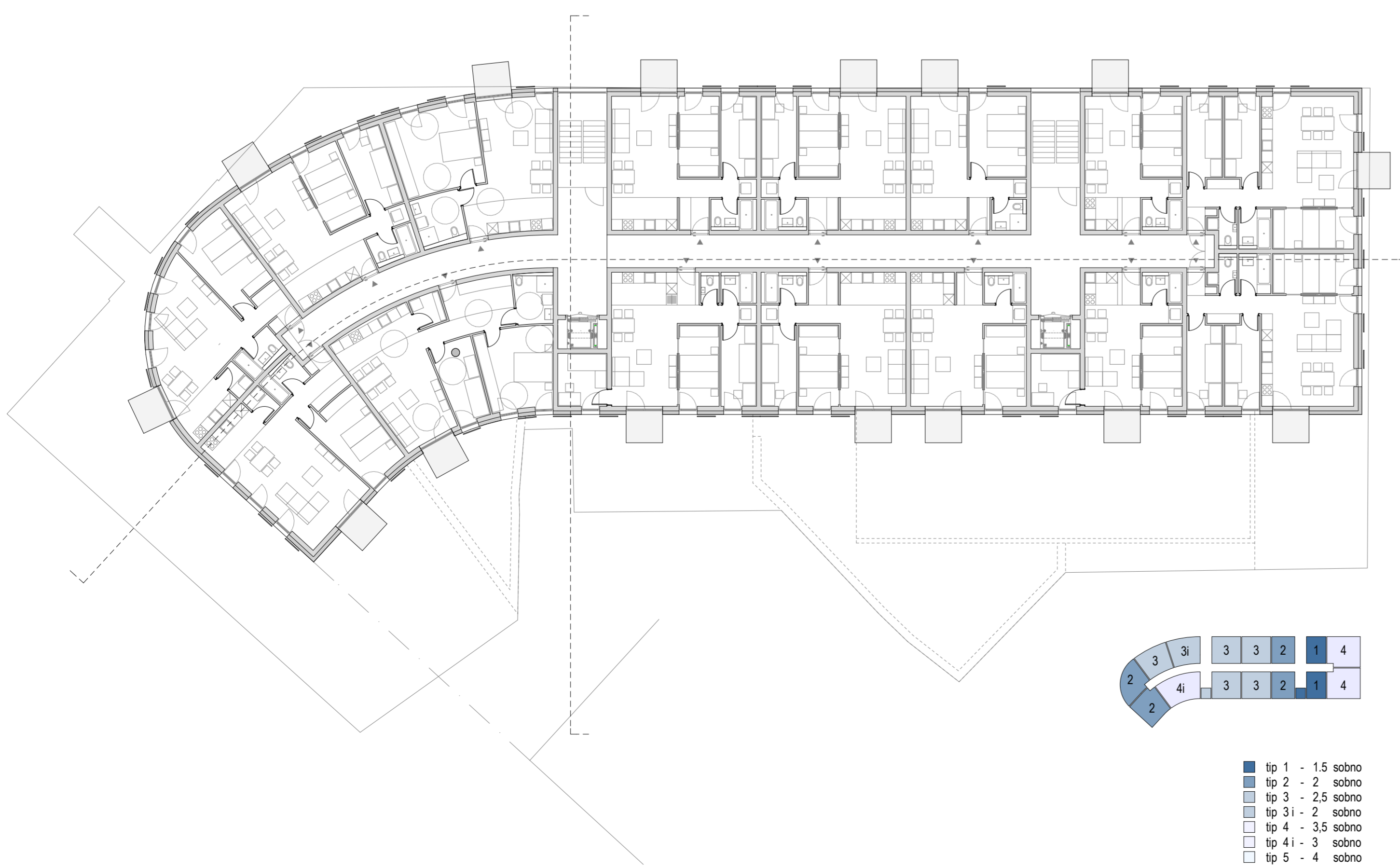
tloris 1. nadstropja M 1:200



| tip 3 - 2,5 sobno - 12x | |
|-------------------------|----------------------|
| 1 predprostor | 2,95 m ² |
| 2 kopalnica | 3,95 m ² |
| 3 kuhinja | 6,50 m ² |
| 4 hodnik | 3,40 m ² |
| 5 shramba | 0,95 m ² |
| 6 dnevni prostor | 20,00 m ² |
| 7 spalnica | 9,80 m ² |
| 8 otroška soba | 6,85 m ² |
| | 56,20 m ² |
| 9 zimski vrt | 3,35 m ² |

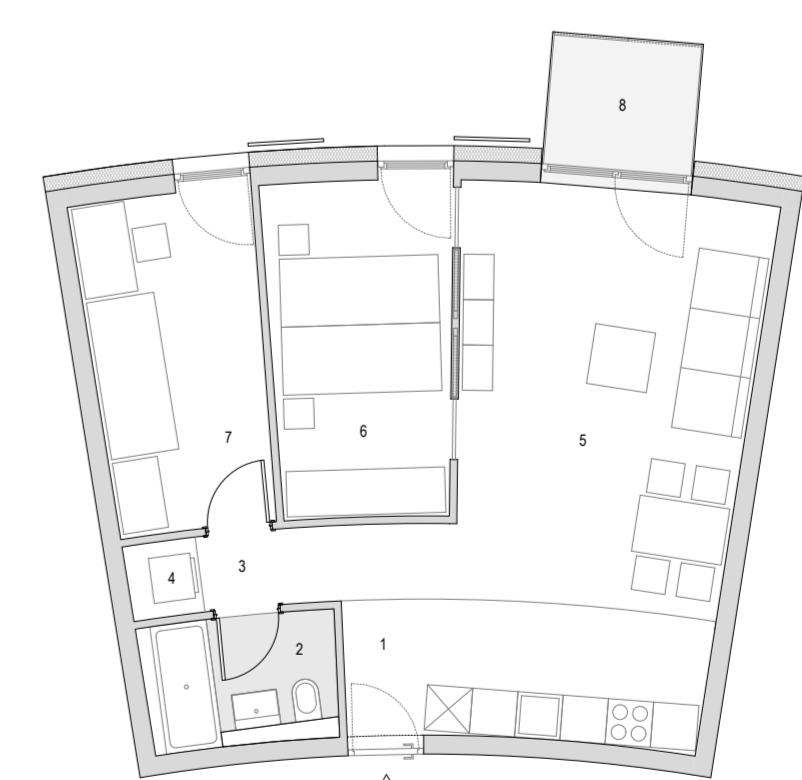


| tip 3* - 2,5 sobno - 4x | |
|-------------------------|----------------------|
| 1 predprostor | 2,50 m ² |
| 2 kopalnica | 3,10 m ² |
| 3 wc | 1,50 m ² |
| 4 kuhinja | 6,10 m ² |
| 5 hodnik | 3,40 m ² |
| 6 shramba | 0,95 m ² |
| 7 dnevni prostor | 20,00 m ² |
| 8 spalnica | 9,80 m ² |
| 9 otroška soba | 8,85 m ² |
| 10 kabinet | 7,95 m ² |
| | 63,85 m ² |
| 11 zimski vrt | 3,35 m ² |

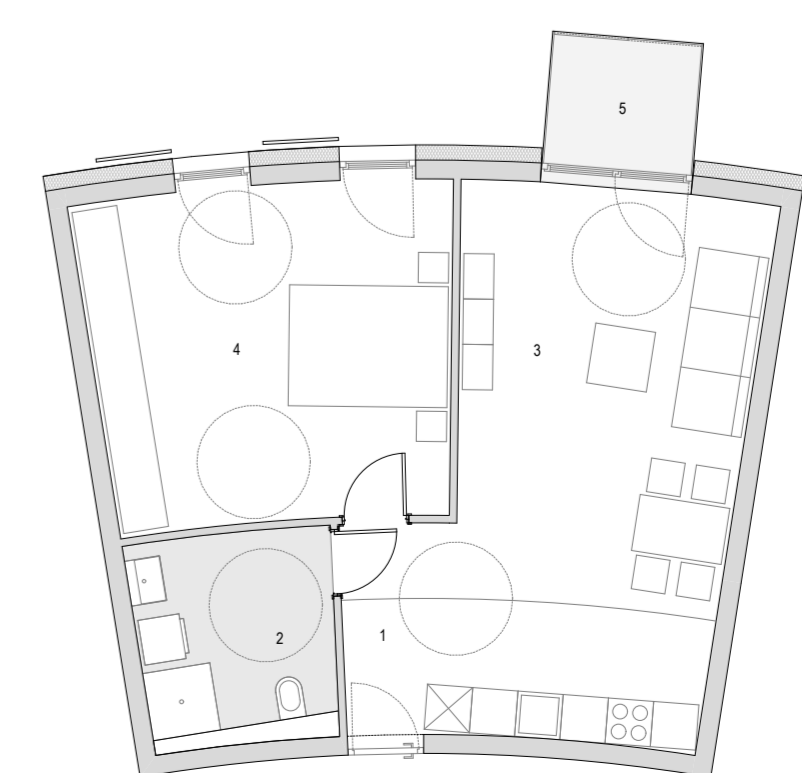


| |
|-------------------|
| tip 1 - 1,5 sobno |
| tip 2 - 2 sobno |
| tip 3 - 2,5 sobno |
| tip 3i - 2 sobno |
| tip 4 - 3,5 sobno |
| tip 4i - 3 sobno |
| tip 5 - 4 sobno |

tloris 2. nadstropja M 1:200



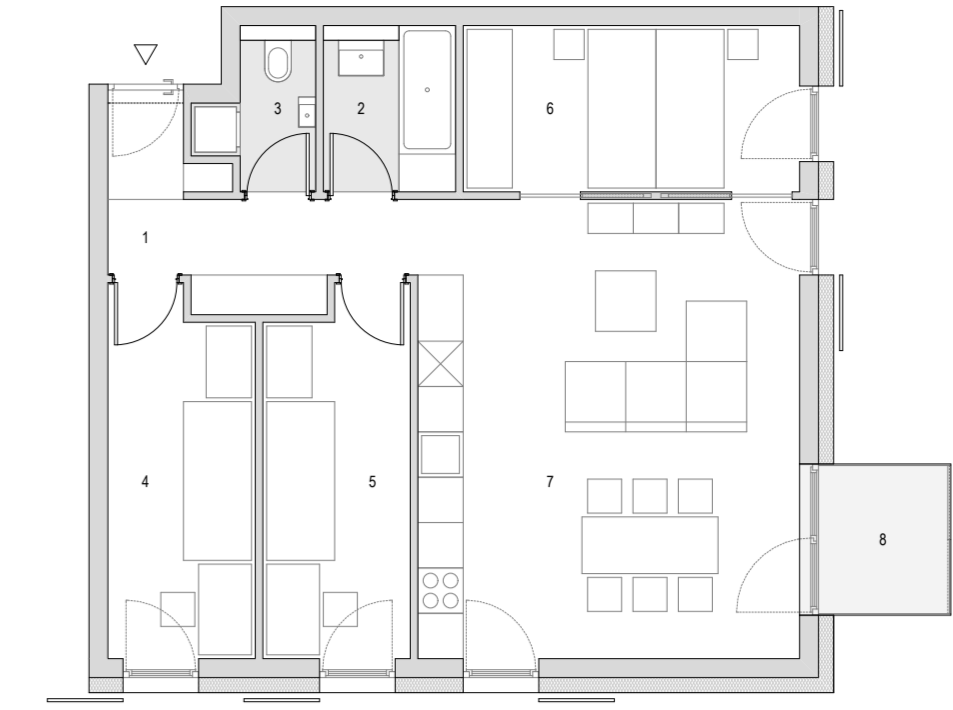
| tip 3 - 2,5 sobno - 5x | |
|------------------------|----------------------|
| 1 predp., kuhinja | 8,60 m ² |
| 2 kopalnica | 3,95 m ² |
| 3 hodnik | 1,85 m ² |
| 4 shramba | 0,95 m ² |
| 5 dnevni prostor | 22,90 m ² |
| 6 spalnica | 10,60 m ² |
| 7 otroška soba | 10,05 m ² |
| | 58,90 m ² |
| 8 zimski vrt | 3,35 m ² |



| tip 3i - 2,5 sobno - 3x | |
|-------------------------|----------------------|
| 1 predp., kuhinja | 8,60 m ² |
| 2 kopalnica | 6,65 m ² |
| 3 dnevni prostor | 22,90 m ² |
| 4 spalnica | 21,10 m ² |
| | 59,25 m ² |
| 5 zimski vrt | 3,35 m ² |

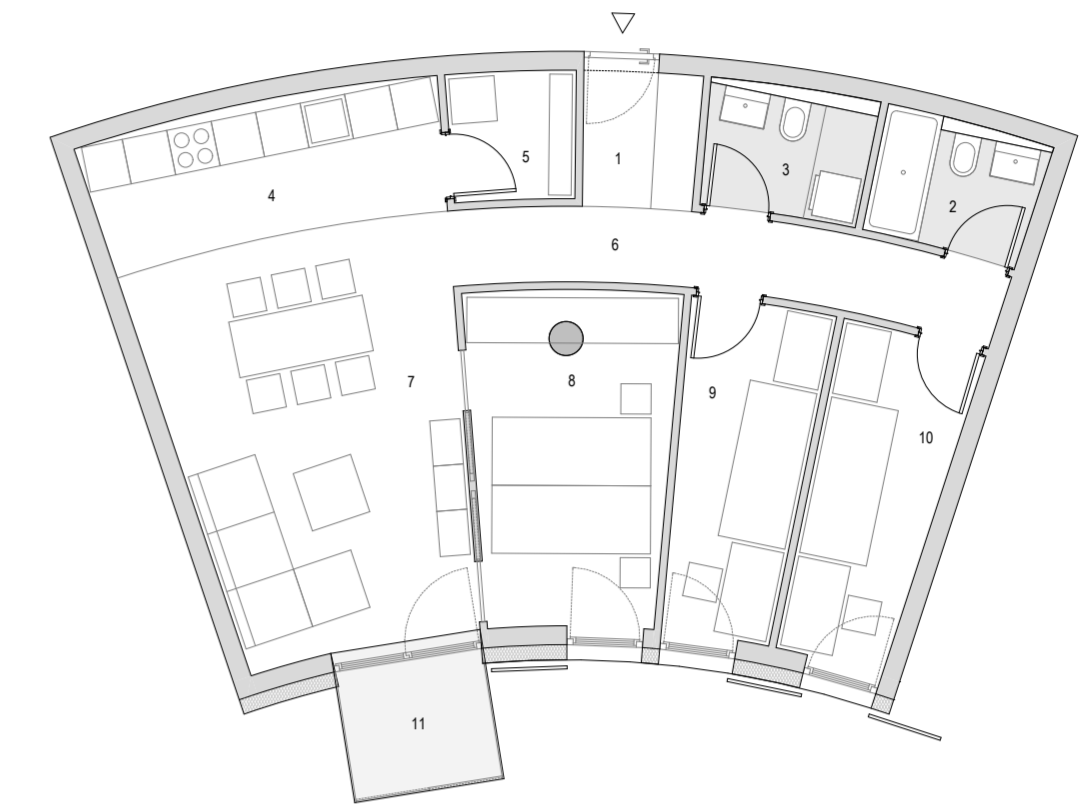


tloris 3. nadstropja M 1:200



tip 4 - 3.5 sobno - 4x

| | |
|------------------|-----------------|
| 1 predprostor | 6.55 m2 |
| 2 kopalnica | 3.65 m2 |
| 3 wc, utility | 2.45 m2 |
| 4 otroška soba | 9.20 m2 |
| 5 otroška soba | 9.20 m2 |
| 6 spalnica | 9.80 m2 |
| 7 dnevni prostor | 30.70 m2 |
| Total | 71.55 m2 |
| 9 zimski vrt | 3.35 m2 |

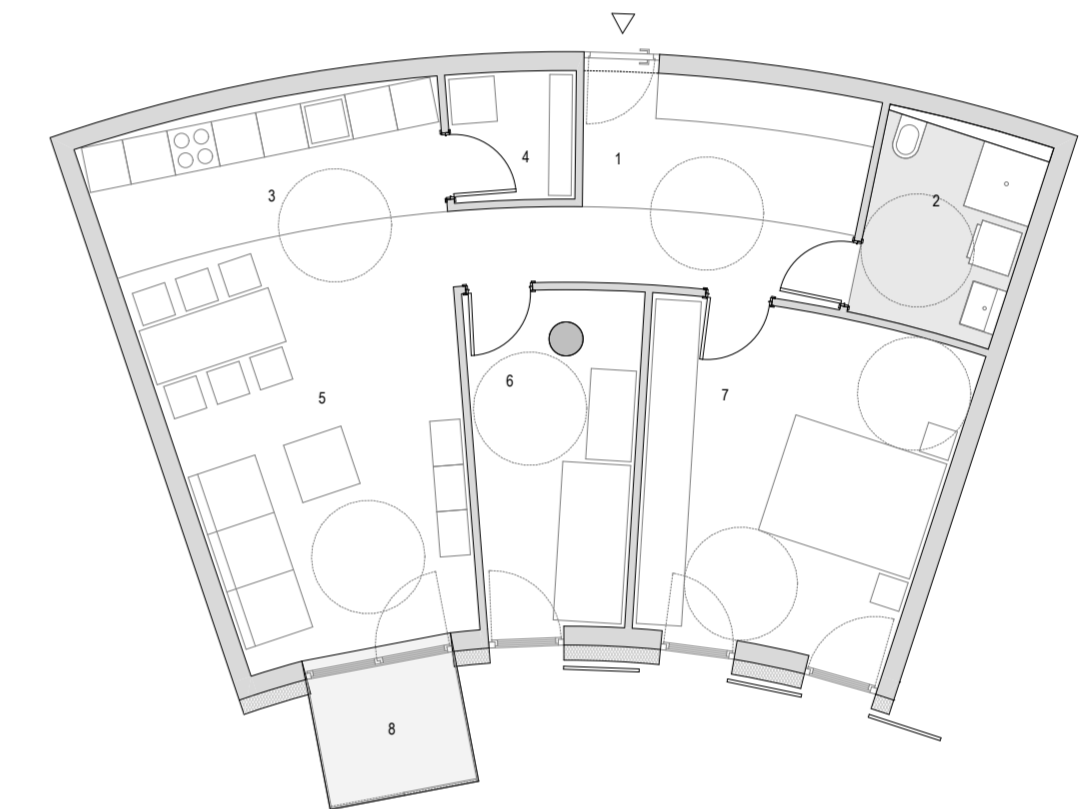


tip 4 - 3.5 sobno - 2x

| | |
|------------------|-----------------|
| 1 predprostor | 2.75 m2 |
| 2 kopalnica | 3.50 m2 |
| 3 wc, utility | 3.35 m2 |
| 4 kuhinja | 8.45 m2 |
| 5 shramba | 2.85 m2 |
| 6 hodnik | 7.35 m2 |
| 7 dnevni prostor | 21.00 m2 |
| 8 spalnica | 11.45 m2 |
| 9 otroška soba | 7.50 m2 |
| 10 otroška soba | 7.50 m2 |
| Total | 75.70 m2 |
| 11 zimski vrt | 3.35 m2 |

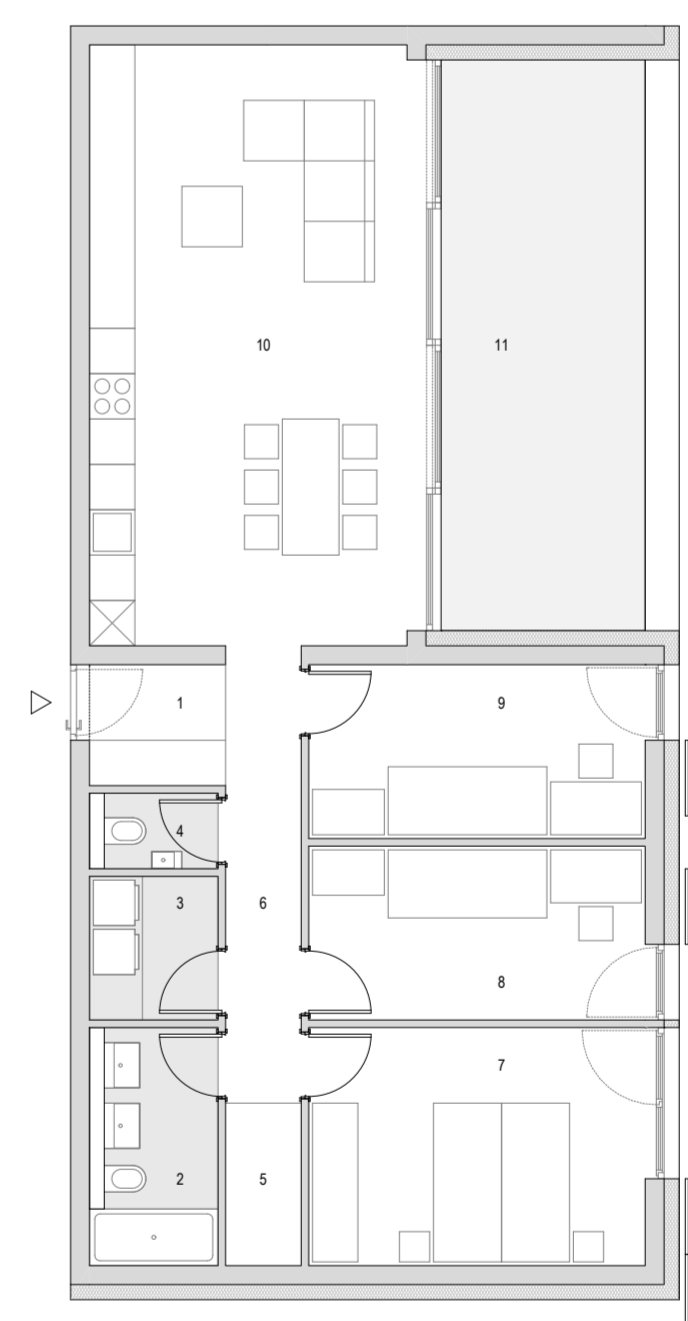


tloris 4. nadstropja M 1:200



tip 4i - 3 sobno - 3x

| | |
|------------------|-----------------|
| 1 predprostor | 12.15 m2 |
| 2 kopalnica | 5.55 m2 |
| 3 kuhinja | 8.45 m2 |
| 4 shramba | 2.85 m2 |
| 5 dnevni prostor | 21.00 m2 |
| 6 soba | 9.45 m2 |
| 7 spalnica | 17.50 m2 |
| Total | 76.95 m2 |
| 8 zimski vrt | 3.35 m2 |

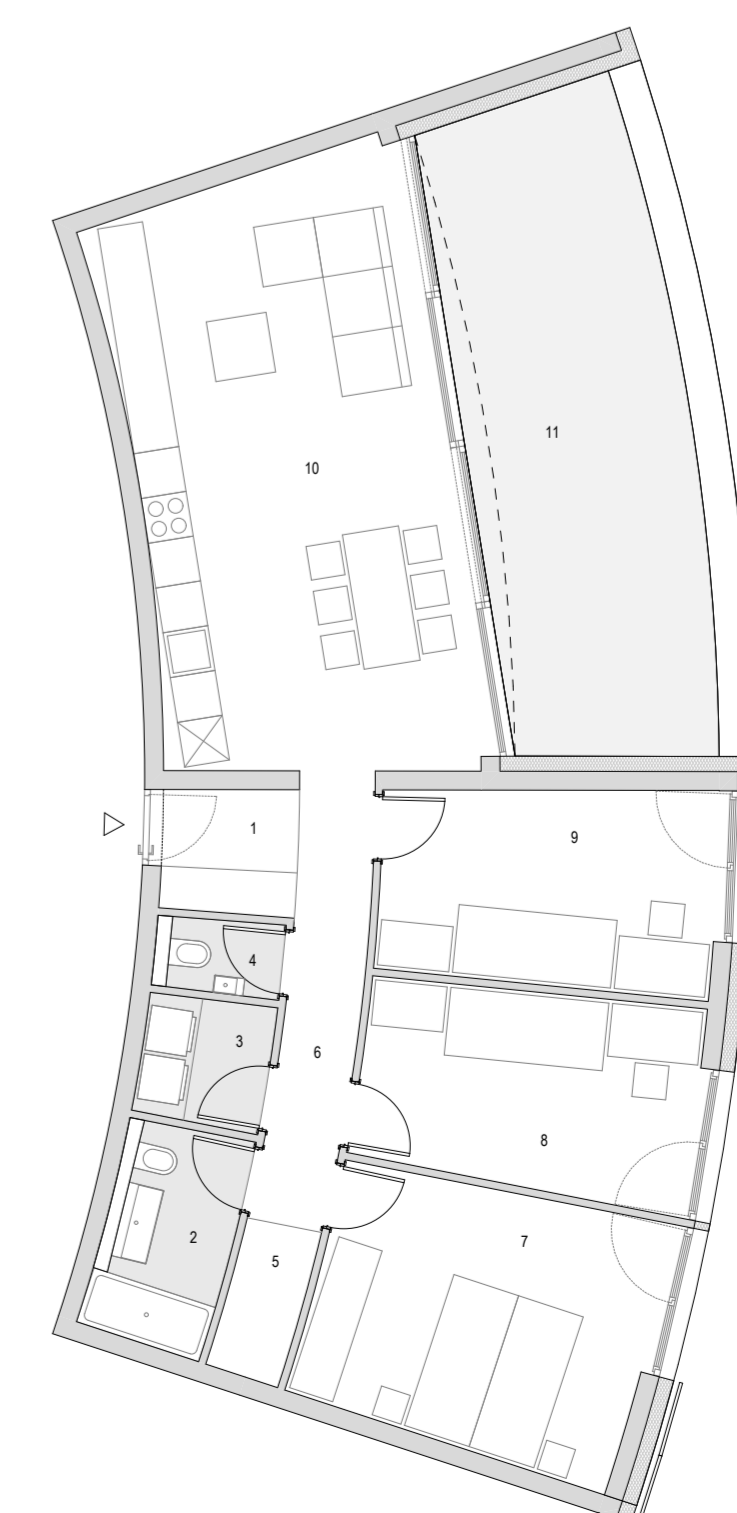


tip 5 - 4 sobno - 2x

| | |
|-------------------|-----------------|
| 1 predprostor | 2.90 m2 |
| 2 kopalnica | 4.90 m2 |
| 3 utility | 3.25 m2 |
| 4 wc | 1.50 m2 |
| 5 shramba | 2.15 m2 |
| 6 hodnik | 6.05 m2 |
| 7 spalnica | 14.00 m2 |
| 8 otroška soba | 10.25 m2 |
| 9 otroška soba | 10.25 m2 |
| 10 dnevni prostor | 33.40 m2 |
| Total | 88.65 m2 |
| 11 terasa | 20.40 m2 |



tloris 5. nadstropja M 1:200

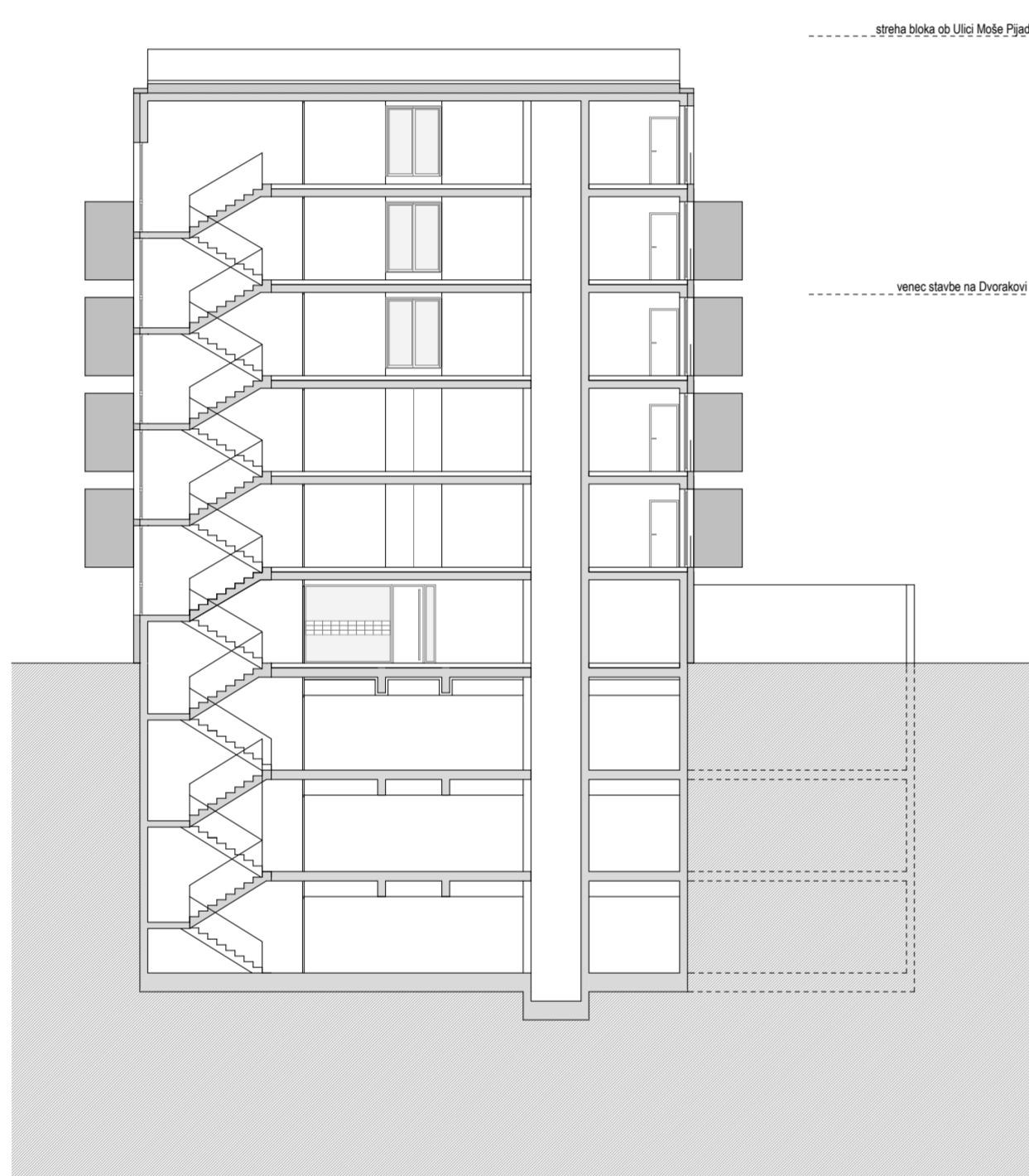


tip 5 - 4 sobno - 1x

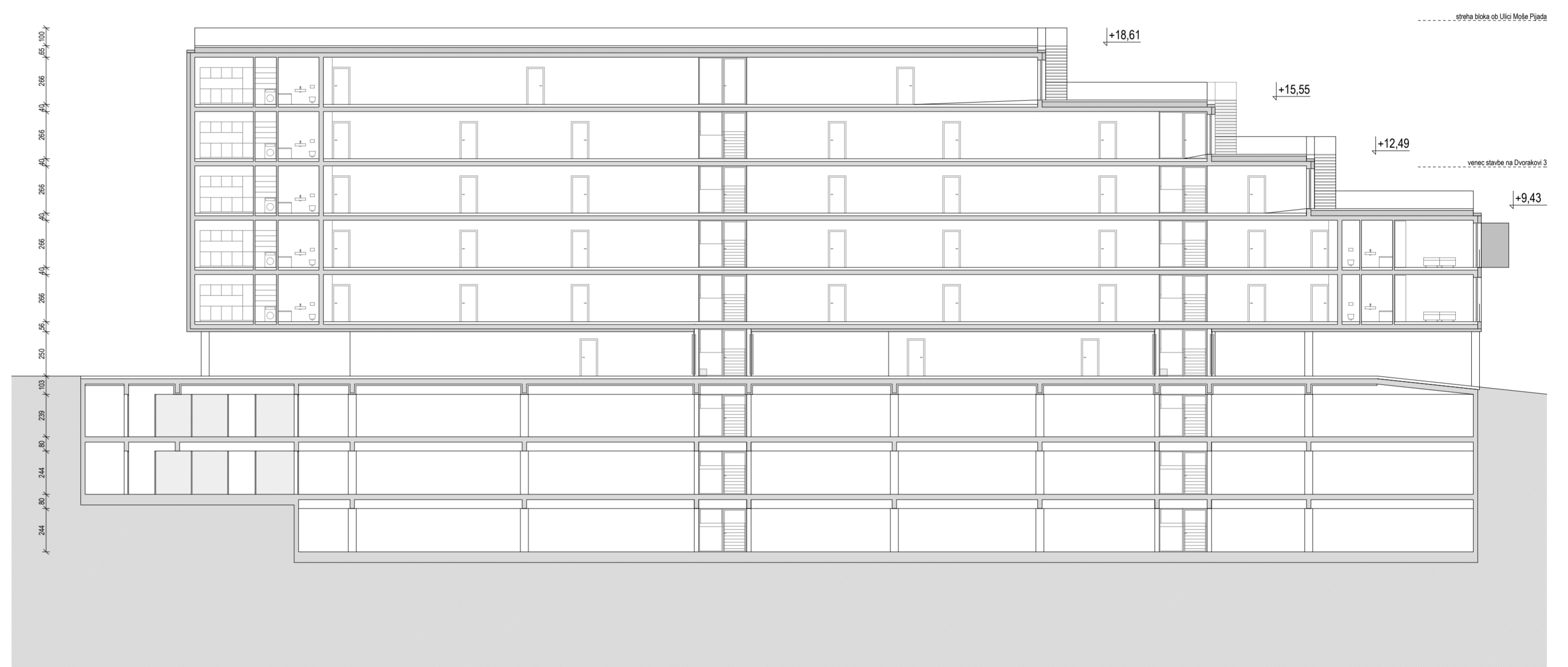
| | |
|-------------------|-----------------|
| 1 predprostor | 2.95 m2 |
| 2 kopalnica | 4.55 m2 |
| 3 utility | 2.80 m2 |
| 4 wc | 1.45 m2 |
| 5 shramba | 2.05 m2 |
| 6 hodnik | 6.05 m2 |
| 7 spalnica | 15.25 m2 |
| 8 otroška soba | 11.45 m2 |
| 9 otroška soba | 11.45 m2 |
| 10 dnevni prostor | 32.95 m2 |
| Total | 90.95 m2 |
| 11 terasa | 25.45 m2 |



prostorski prikaz iz severovzhoda



prečni prerez M 1:200



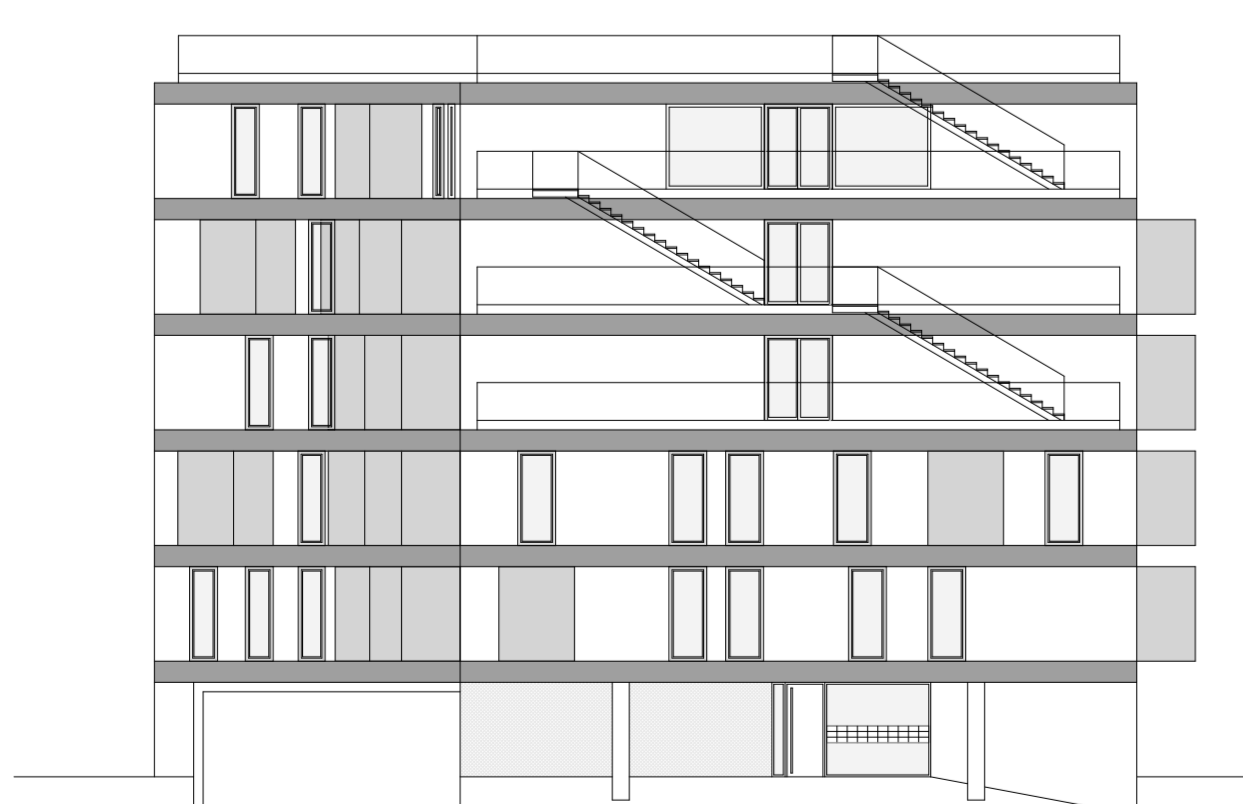
vzdolžni prerez M 1:200



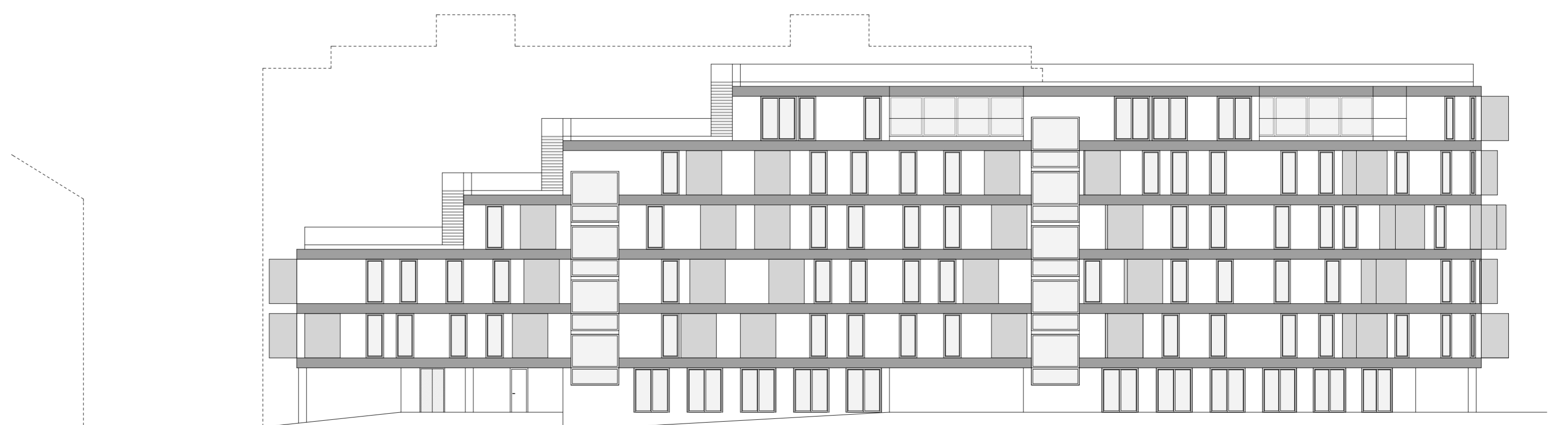
jugozahodna fasada M 1:200



jugovzhodna fasada M 1:200



severovzhodna fasada M 1:200



severozahodna fasada M 1:200