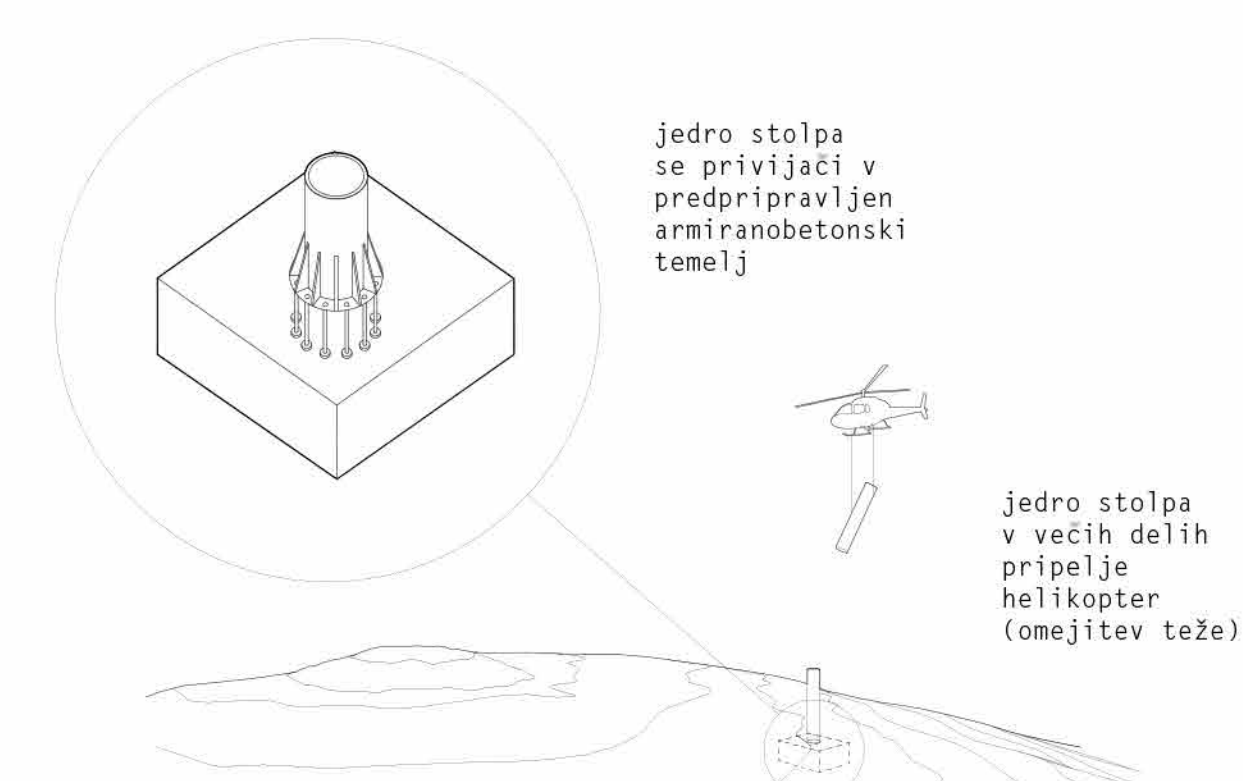


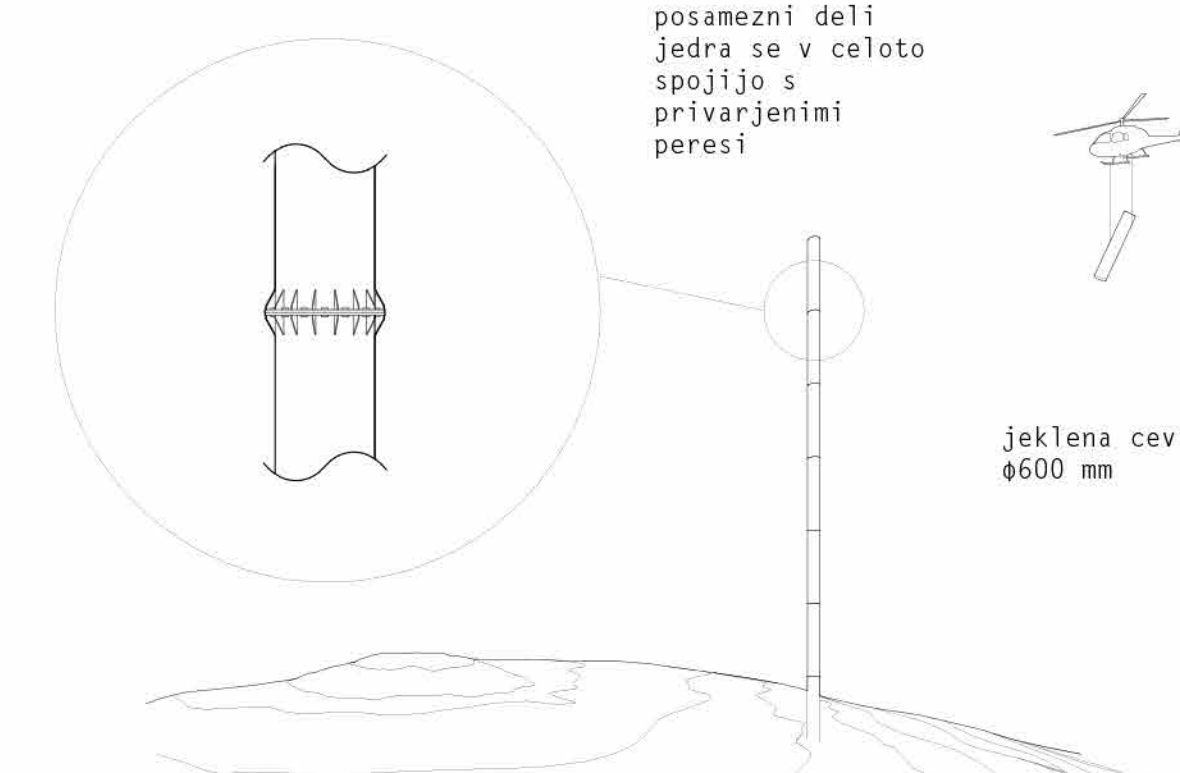
RAZGLEDNI STOLP BOVLJEK



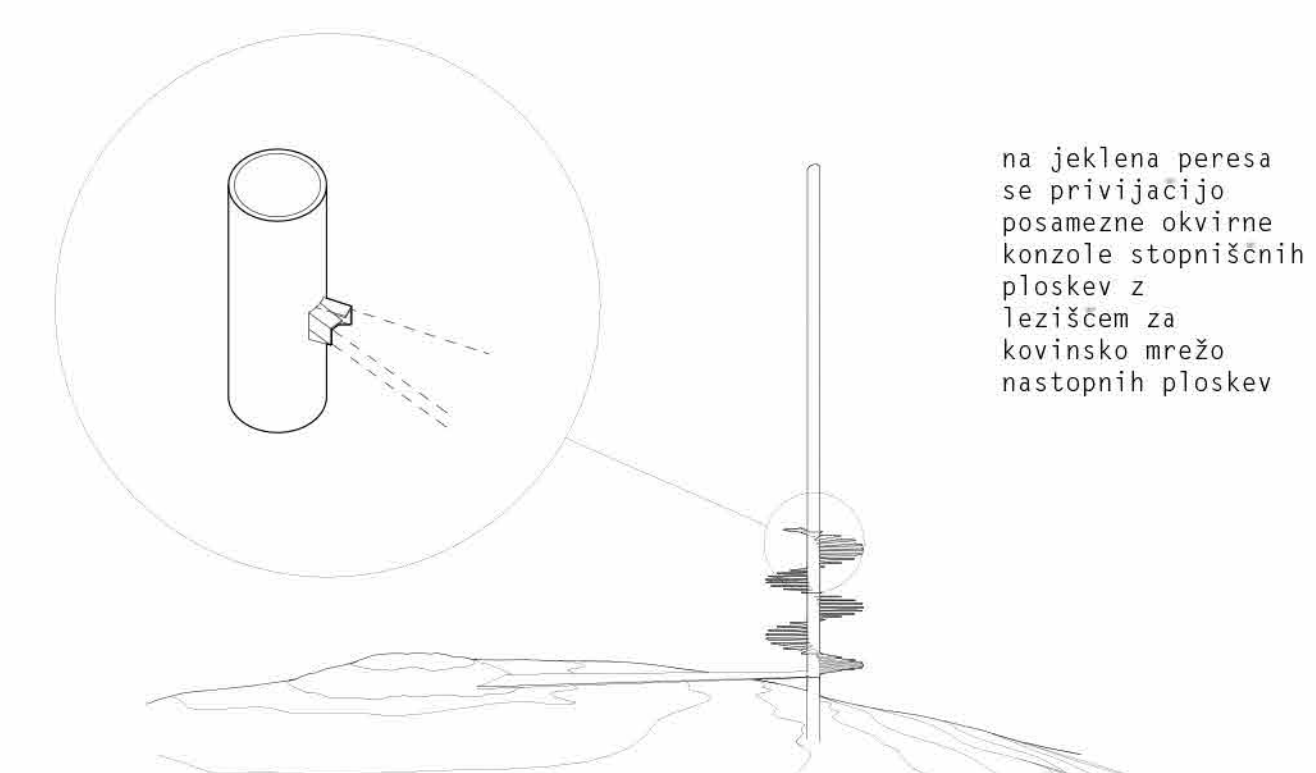
1. TEMELJENJE



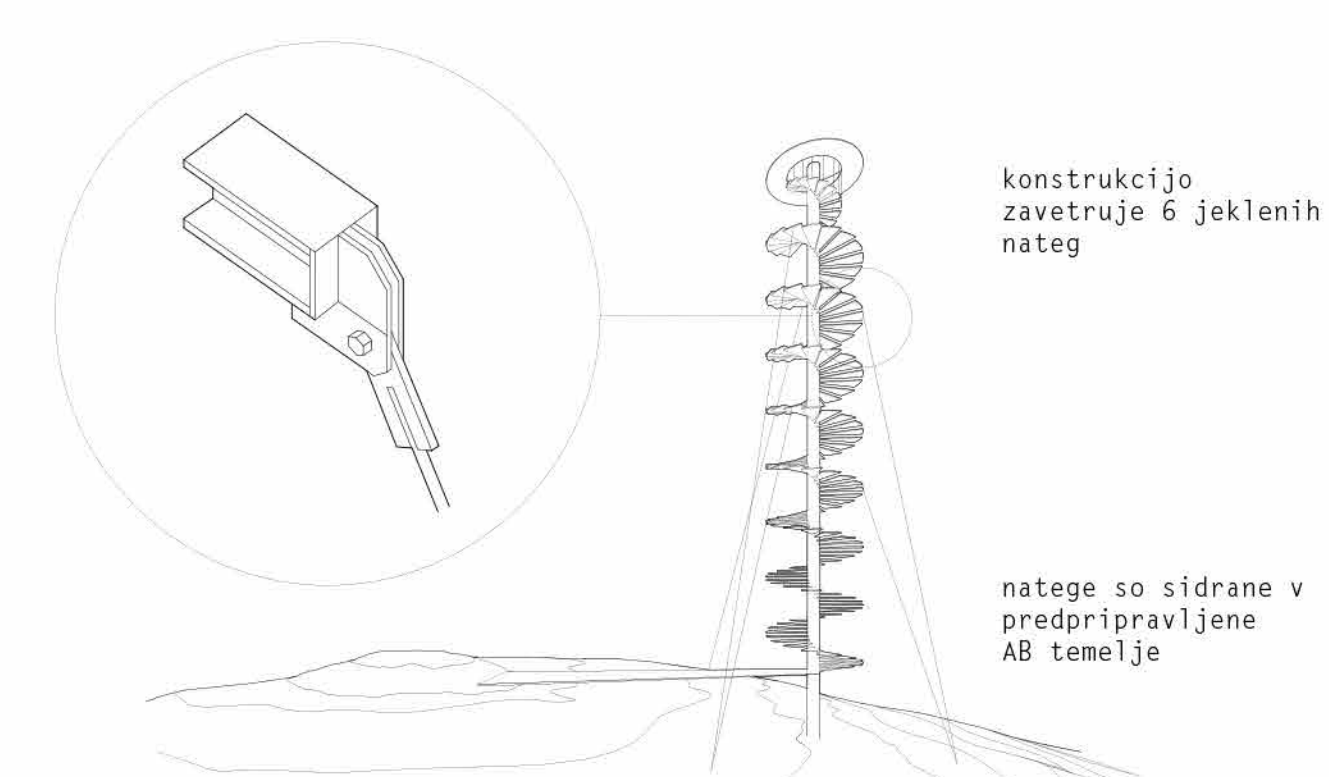
2. JEDRO STOLPA



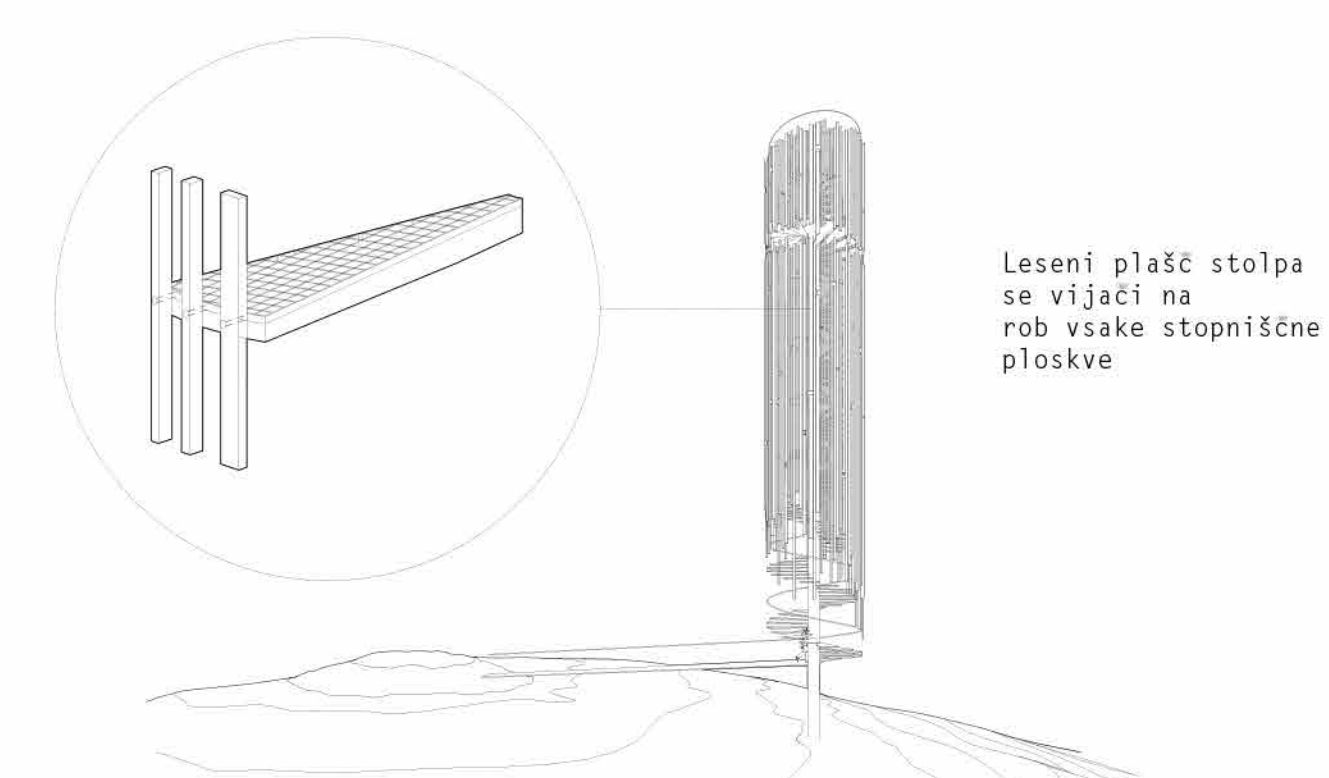
3. STOPNIŠČNE PLOSKVE



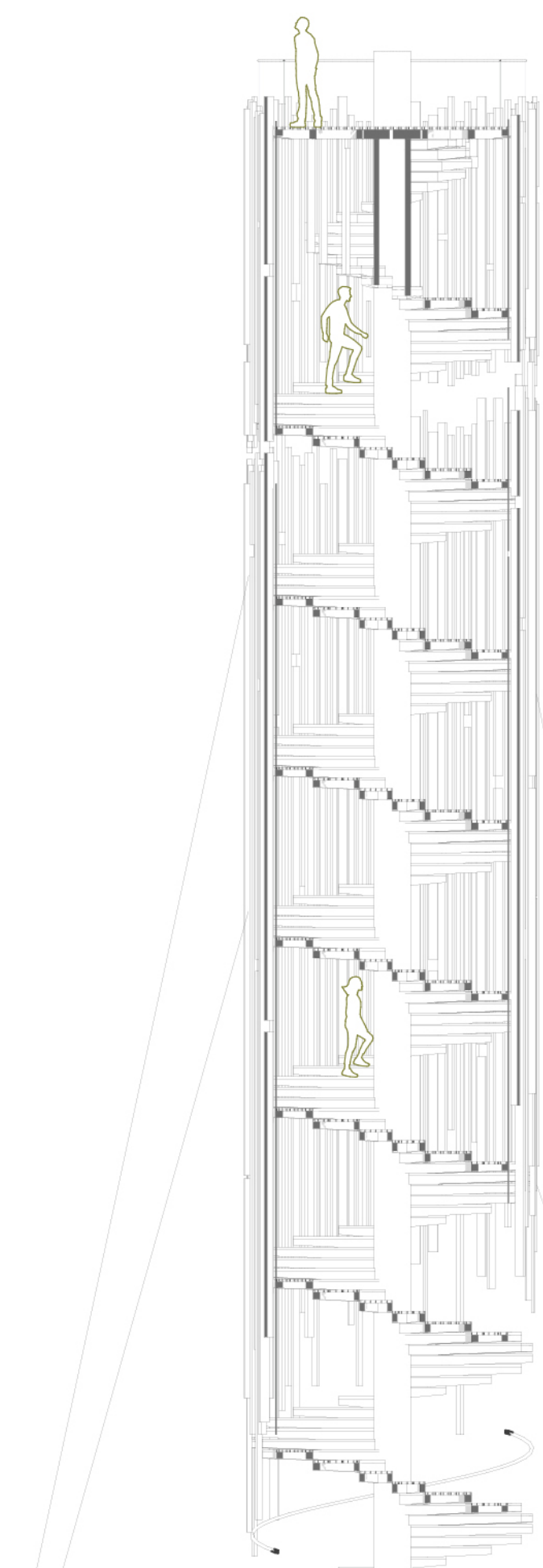
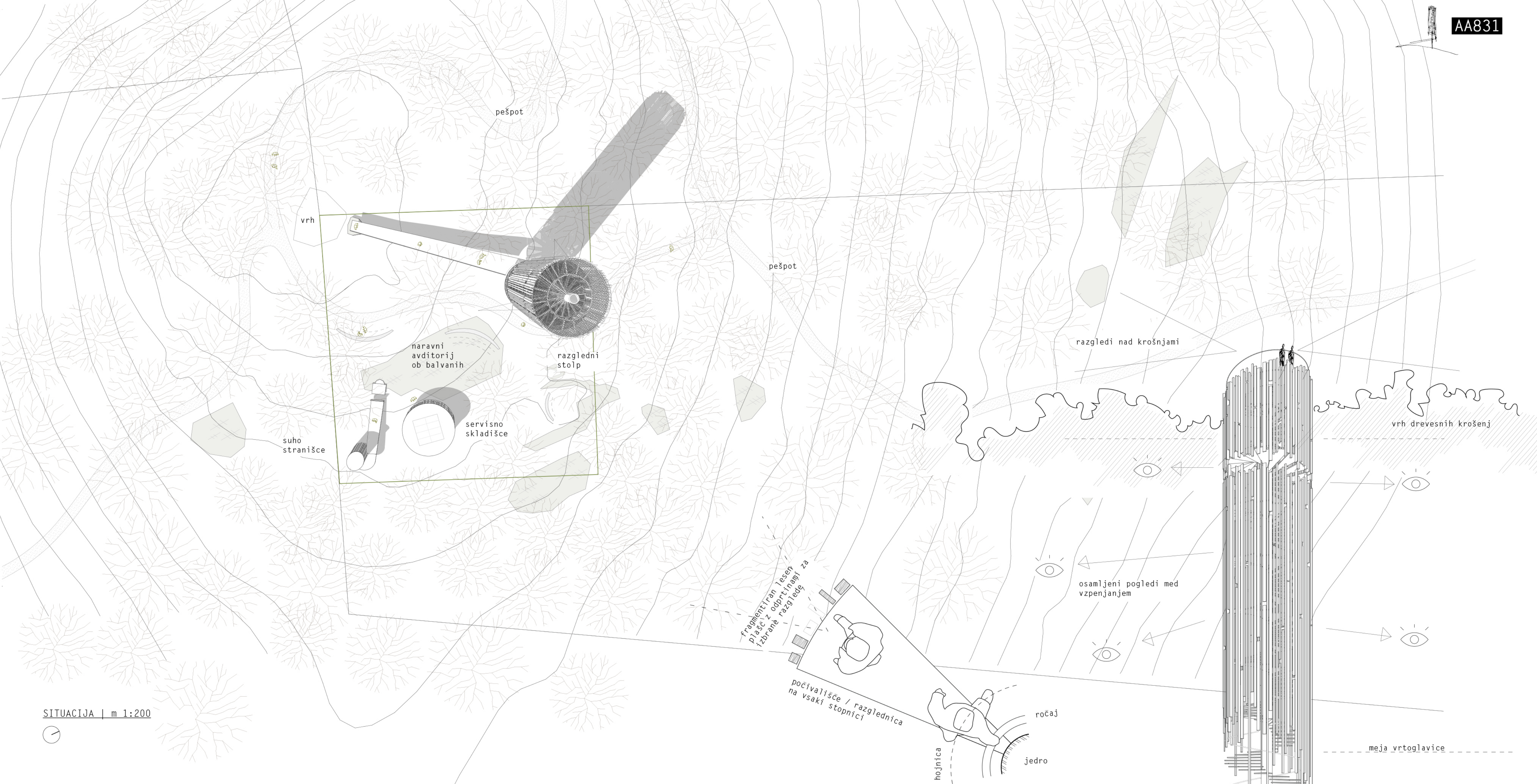
4. ZAVETROVANJE



5. LESENI PLAŠČ

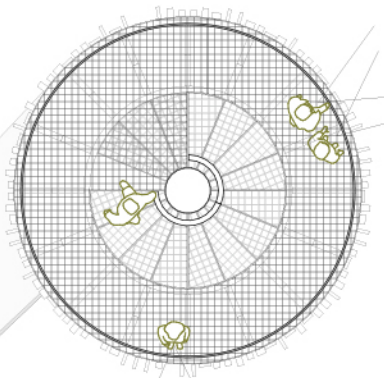


SITUACIJA | m 1:200

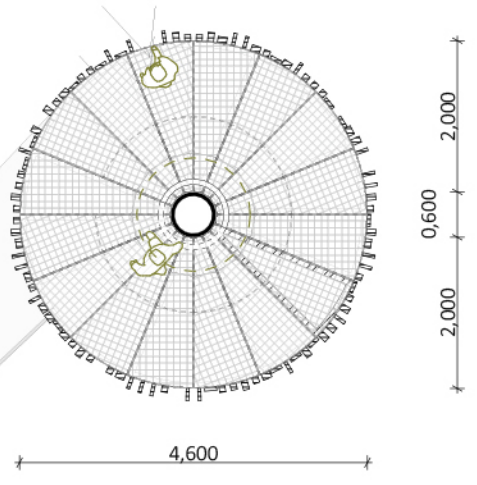


PREREZ A-A | m 1:100

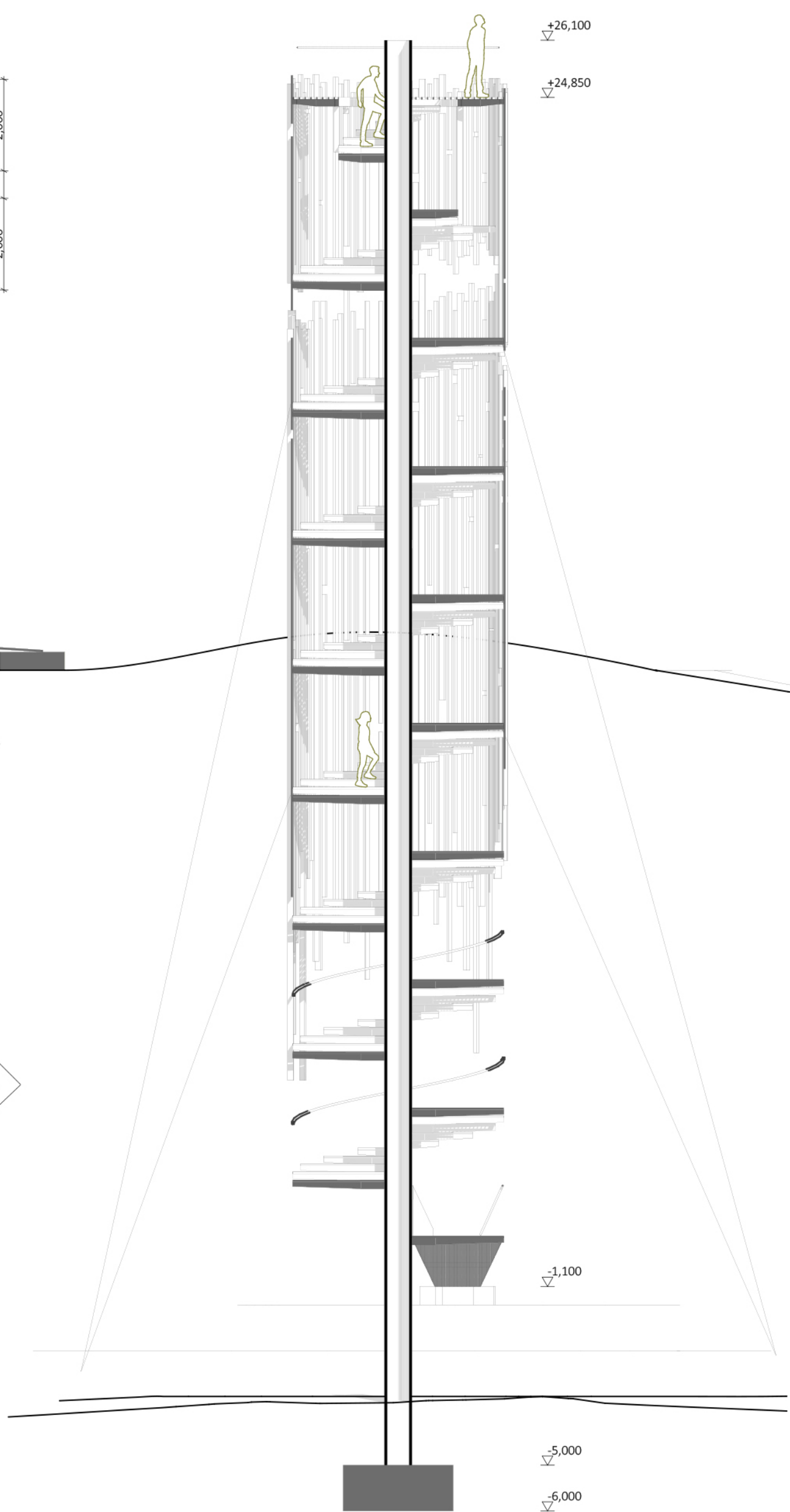
TLORIS STREHE | m 1:100



TLORIS MEDETAŽE | m 1:100



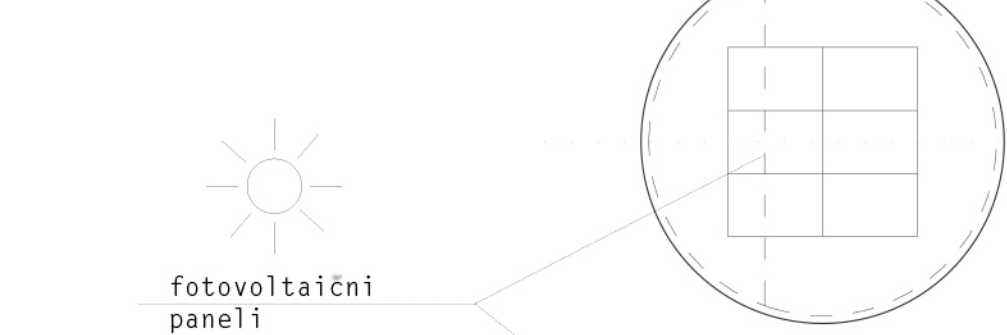
TLORIS PRITLICJA | m 1:100



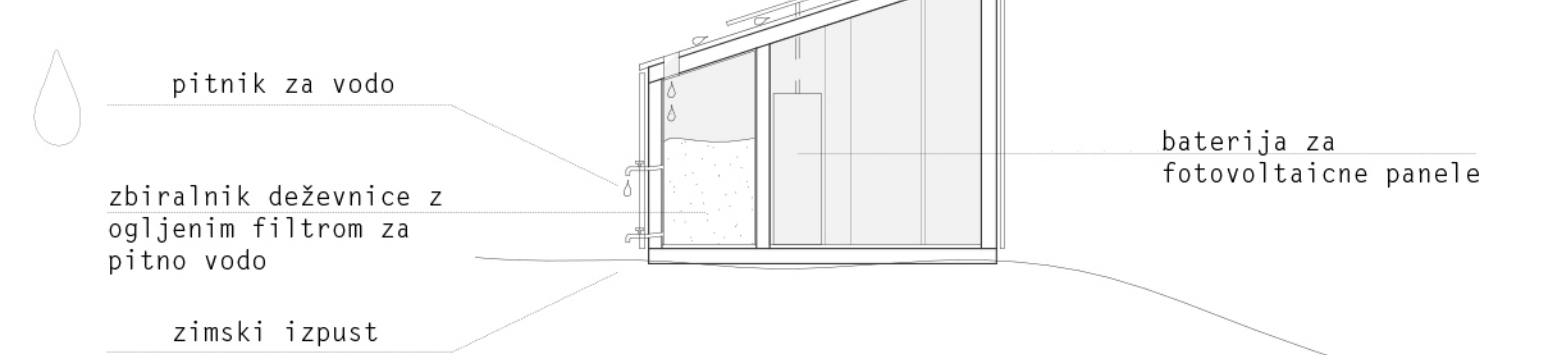
PREREZ B-B | m 1:100

SHRAMBA

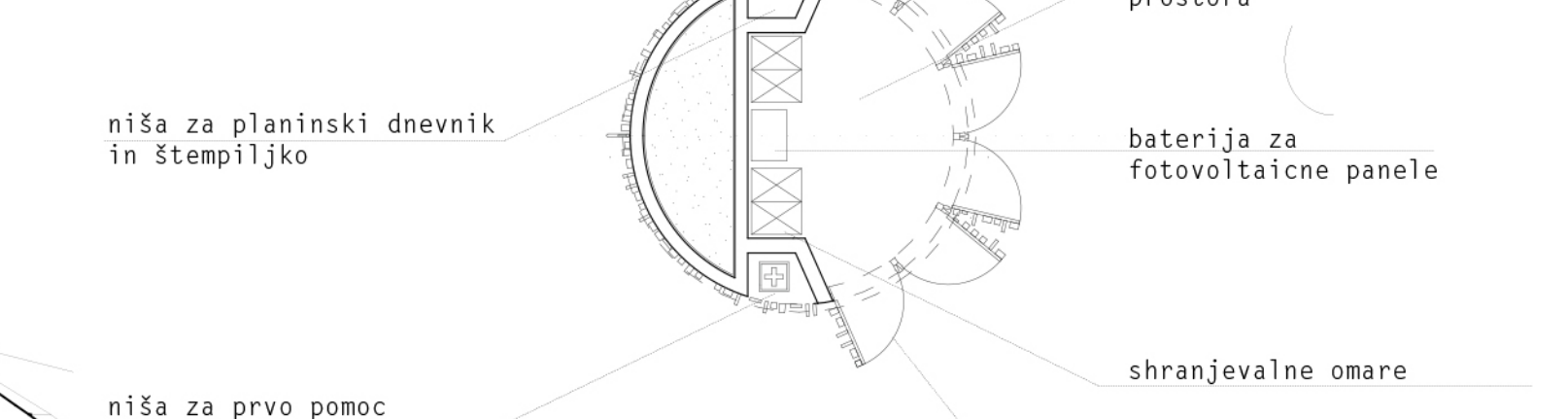
TLORIS STREHE | m 1:100



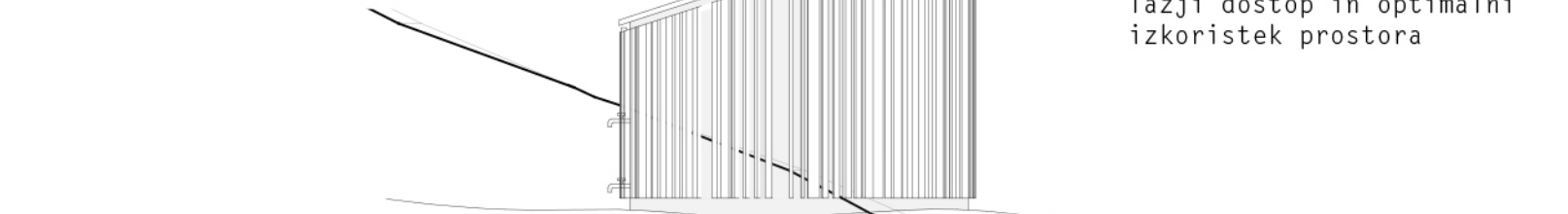
PREREZ A-A | m 1:100



TLORIS | m 1:100



FASADA | m 1:100

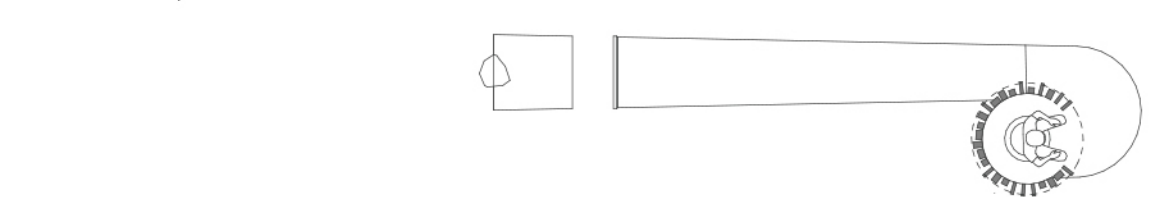


SUHO STRANIŠČE

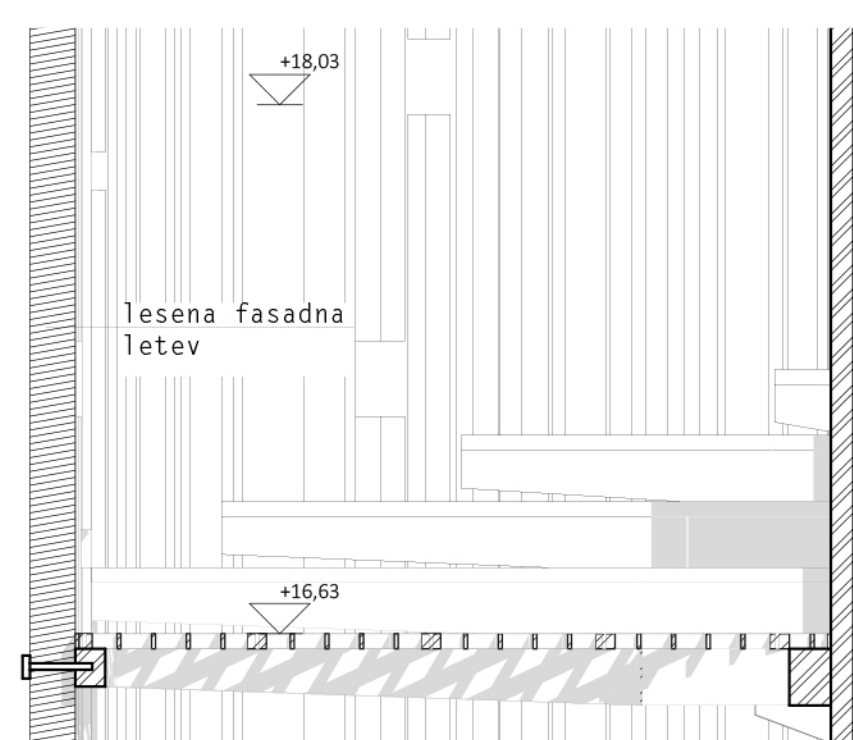
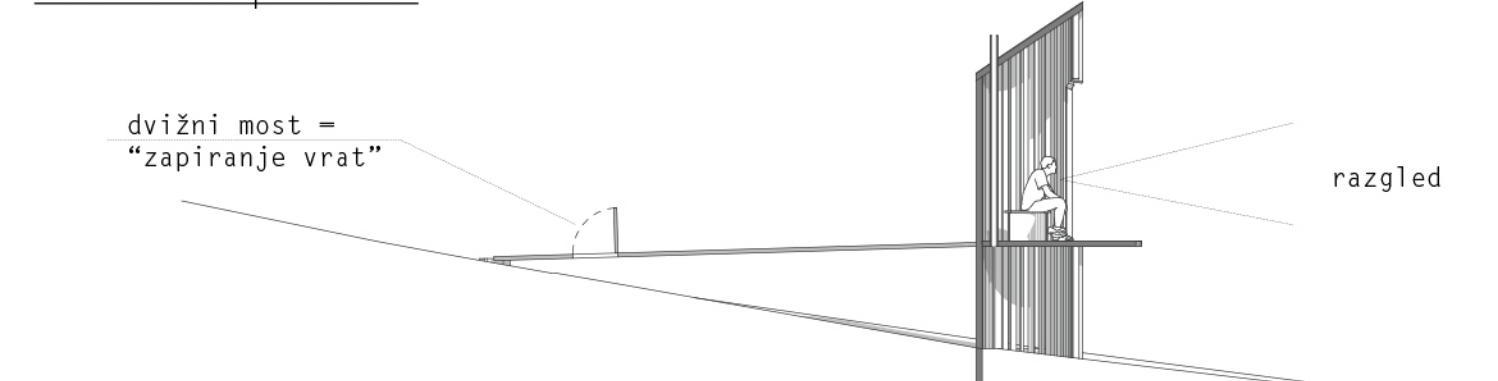
FASADA | m 1:100



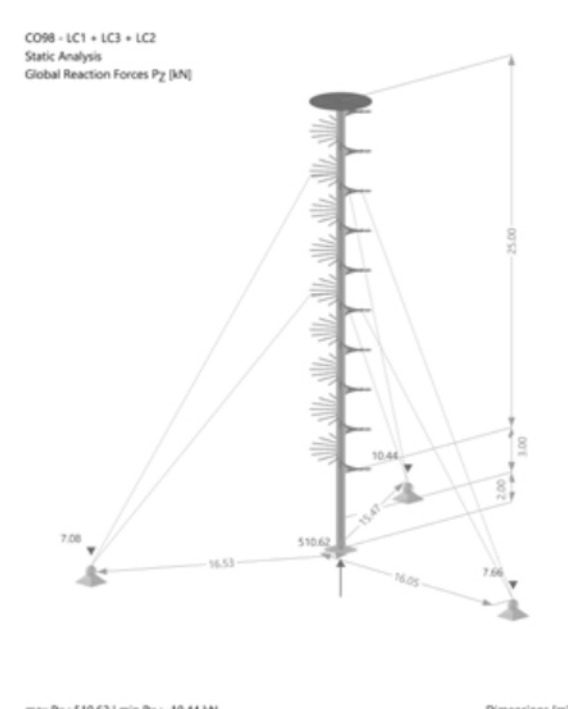
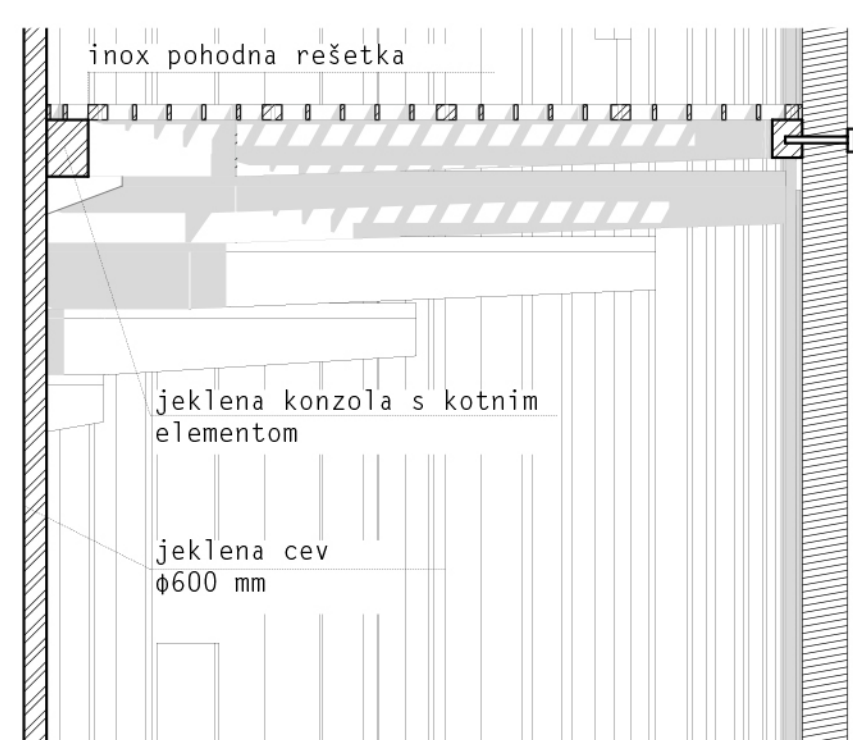
TLORIS | m 1:100



PREREZ A-A | m 1:100



KARAKTERISTIČNI PREREZ | m 1:20



Vira: Pj. 10102 | vira Pj. 10104 V1