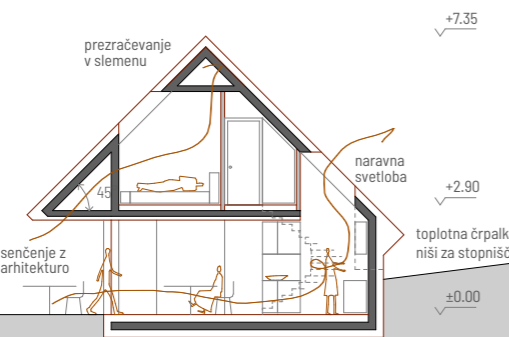
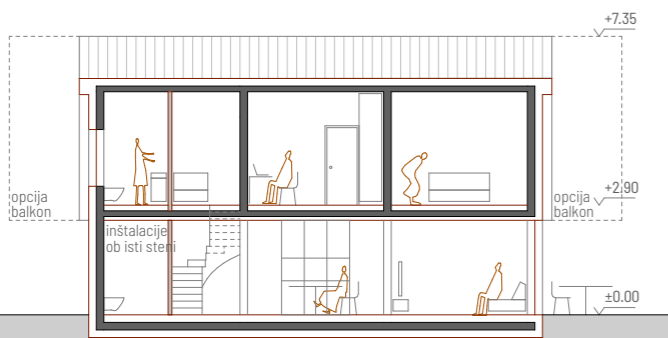


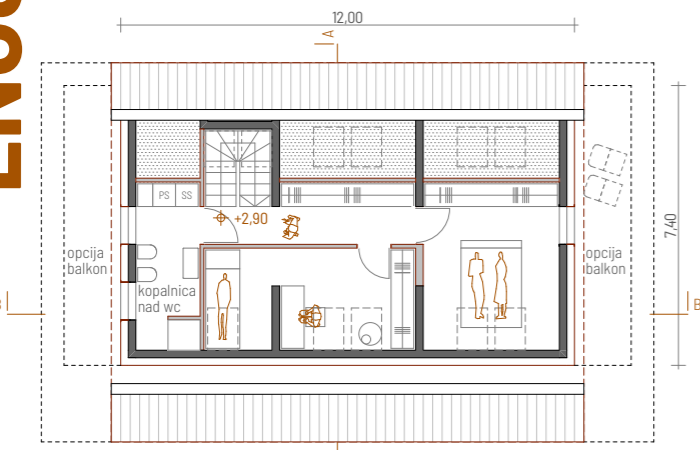
# ENOSTANOVANJSKA TIP A1S



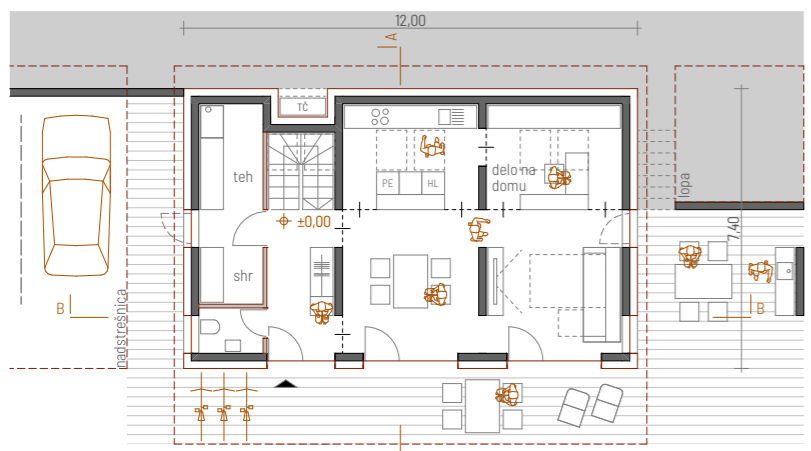
PREREZ A-A



PREREZ B-B



TLORIS MANSARDE



TLORIS PRITLIČJA, M 1:200

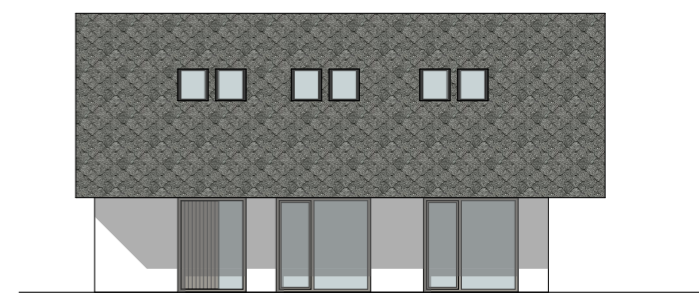
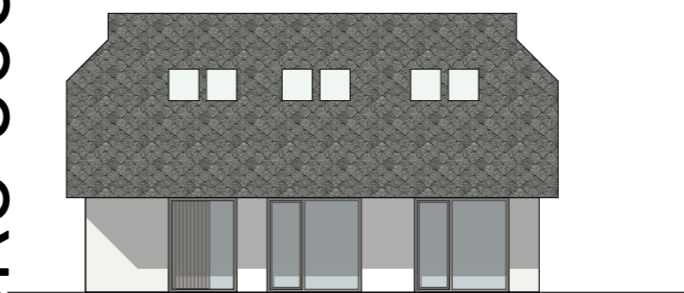
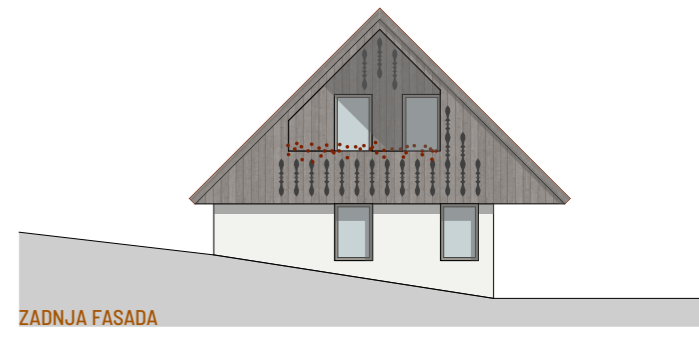
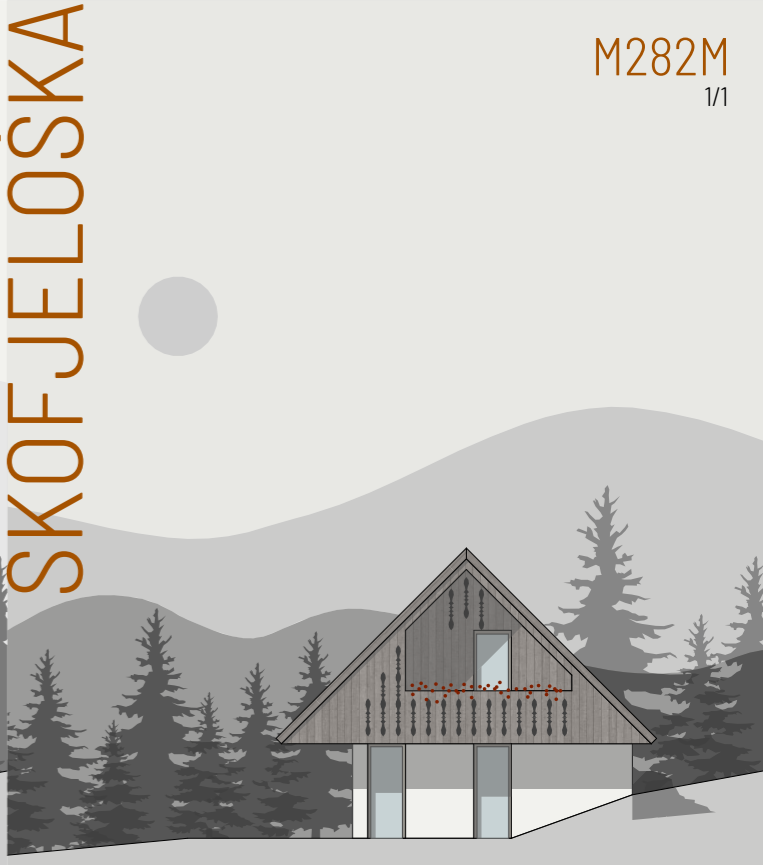
# SAVINJSKA



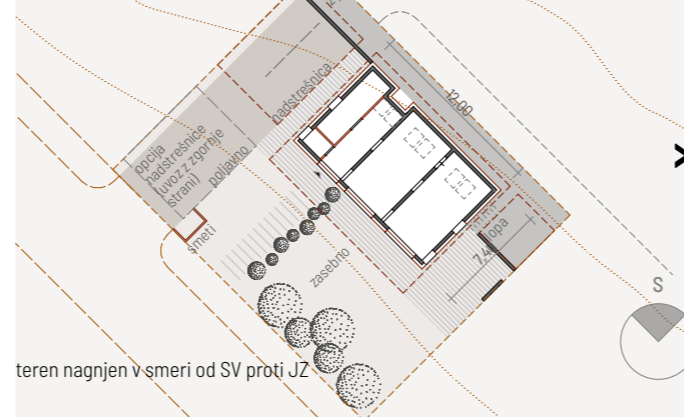
# KOROŠKA



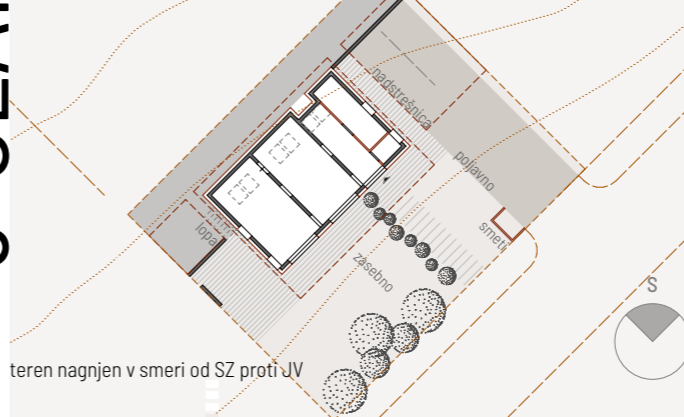
# SKOFJELOŠKA



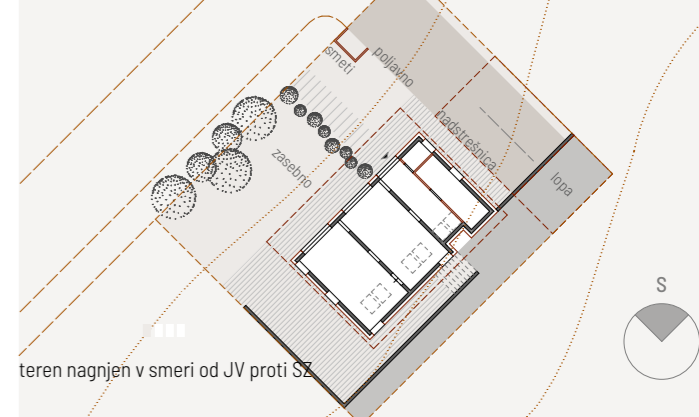
VHODNA FASADA ORGANIZACIJA GRADBENE PARCELE M 1:600



VHODNA FASADA



VHODNA FASADA



# 3-ČLANSKO GOSPODINJSTVO

# ENOSTANOVANJSKA TIP A2S

# KOROŠKA

# ENOSTANOVANJSKA TIP B2S

# ŠKOFJELOŠKA



ZADNJA FASADA



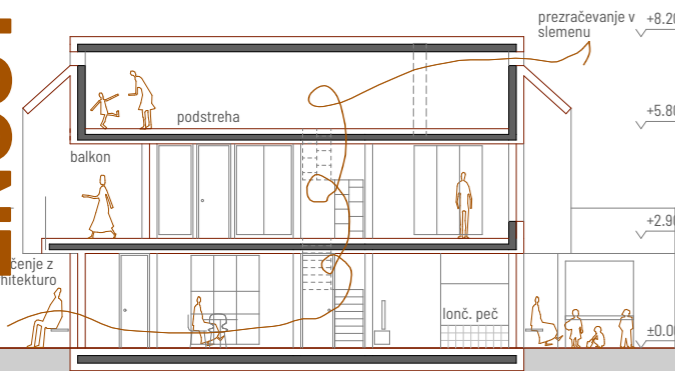
VHODNA FASADA



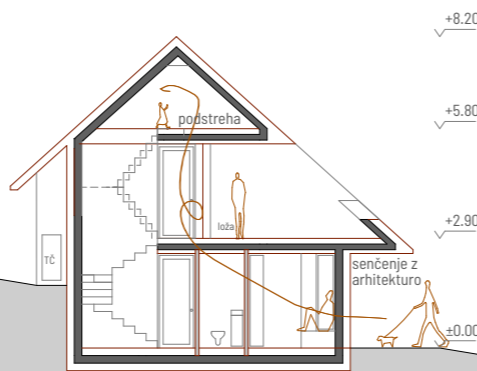
SPREDNJA FASADA



ZADNJA FASADA



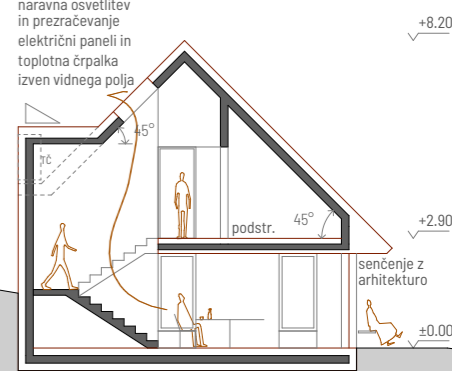
PREREZ B-B



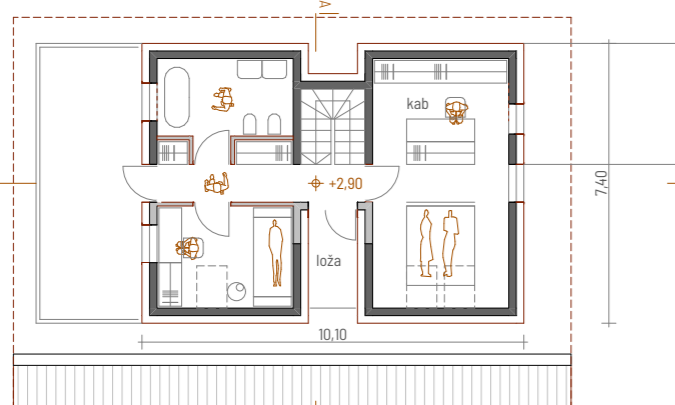
PREREZ A-A



PREREZ B-B



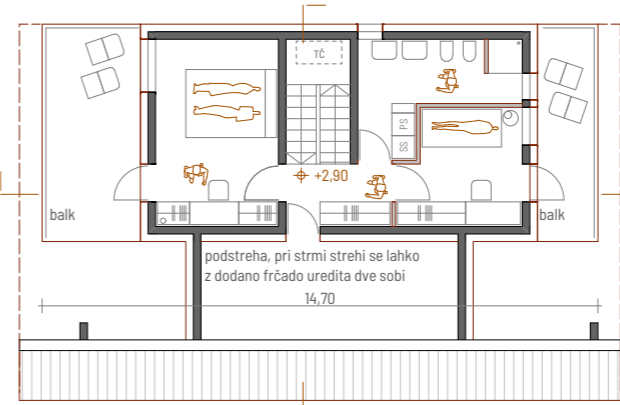
PREREZ A-A



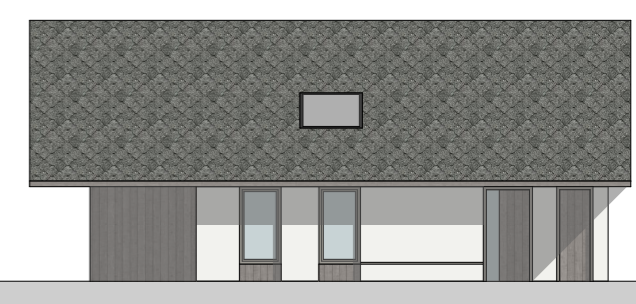
TLORIS MANSARDE



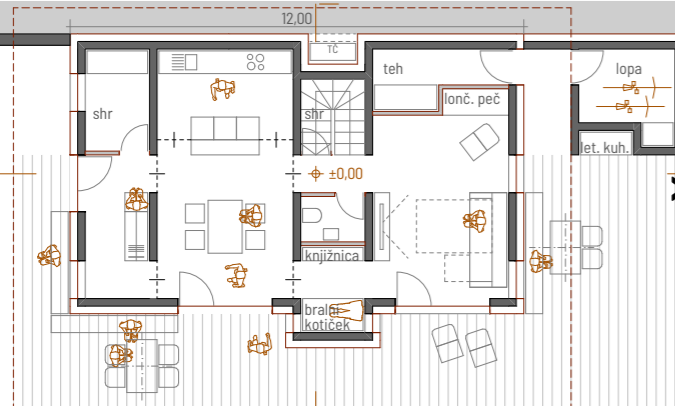
VZDOLŽNA FASADA



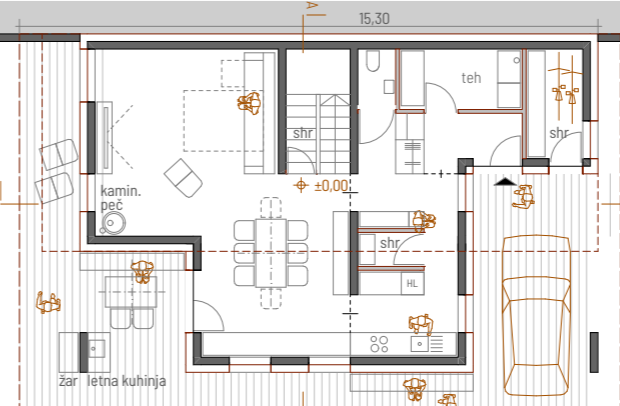
TLORIS MANSARDE



VZDOLŽNA FASADA



TLORIS PRITLIČJA, M 1:200



TLORIS PRITLIČJA

# 3-ČLANSKO GOSPODINJSTVO



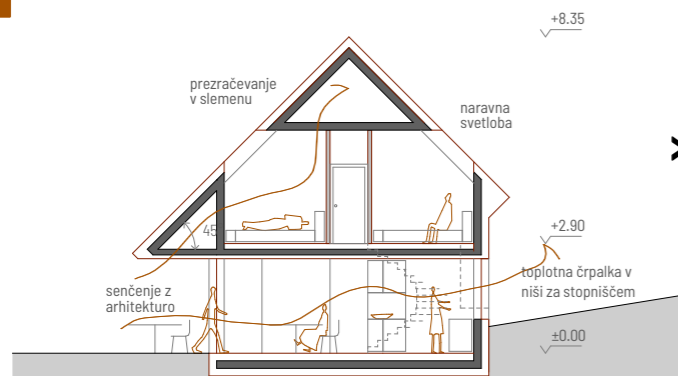
# ENOSTANOVANJSKA TIP A1M, A1L



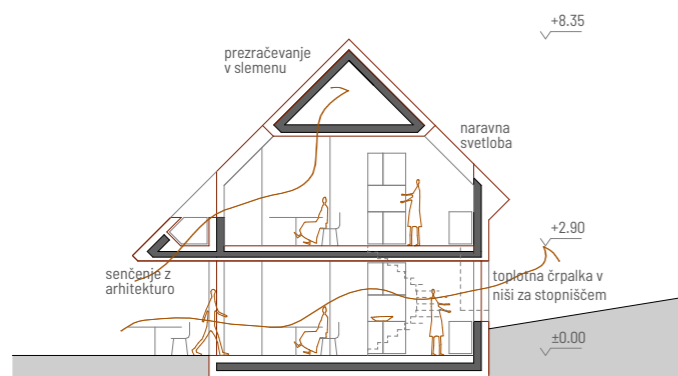
DESNA FASADA



LEVA FASADA

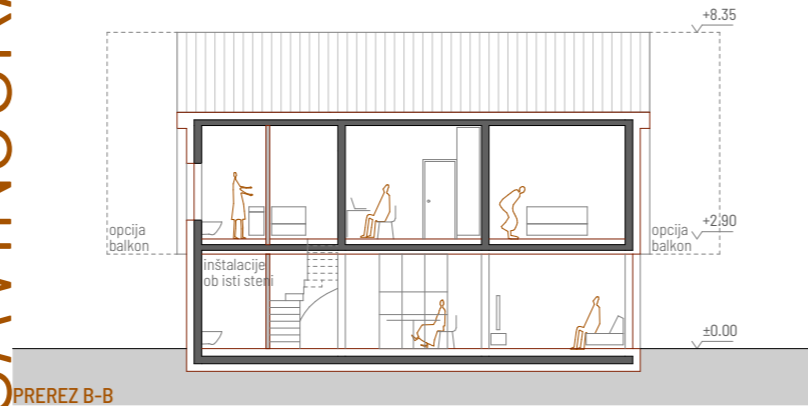


PREREZ A-A 4-ČLANSKO GOSPODINJSTVO

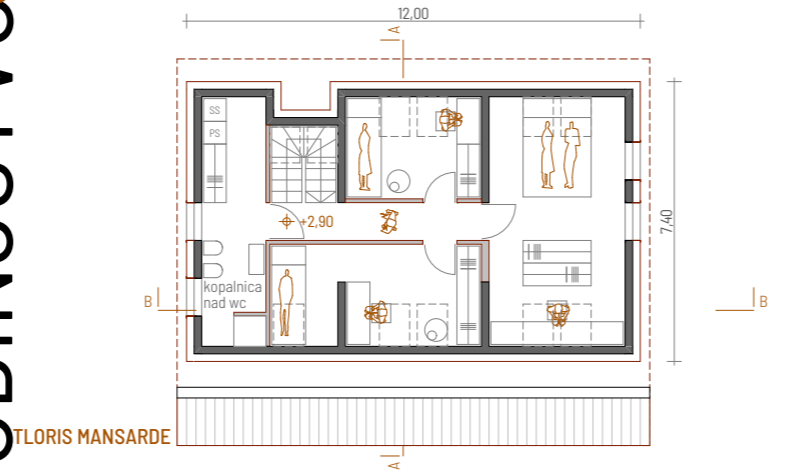


PREREZ A-A 3+2-ČLANSKO GOSPODINJSTVO

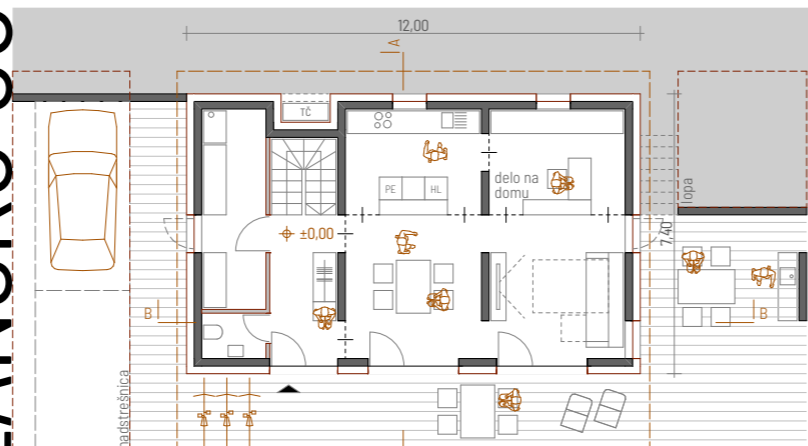
# 4-ČLANSKO GOSPODINJSTVO SAVINJSKA



PREREZ B-B



FLORIS MANSARDE

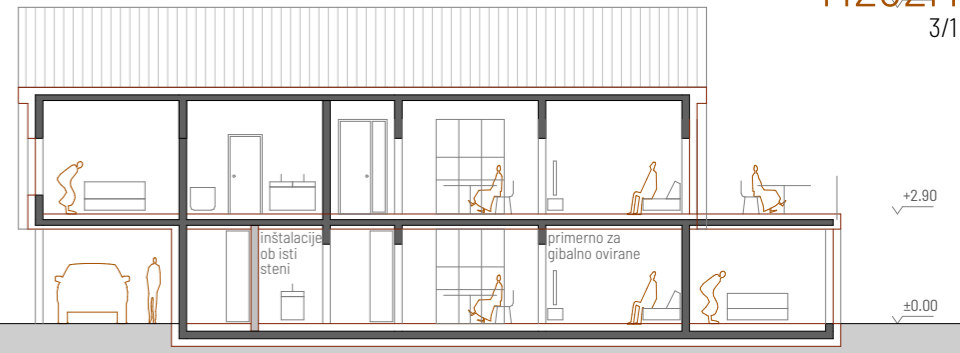


FLORIS PRITLIČJA

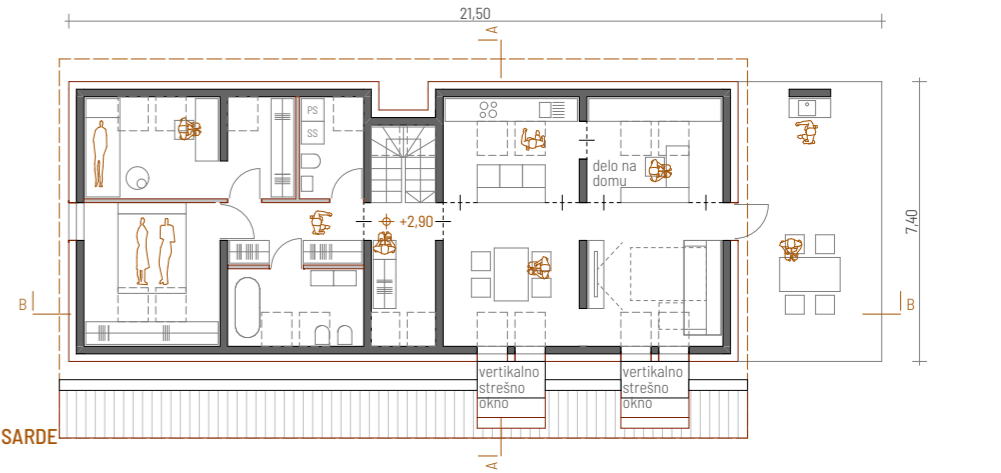


VHODNA FASADA

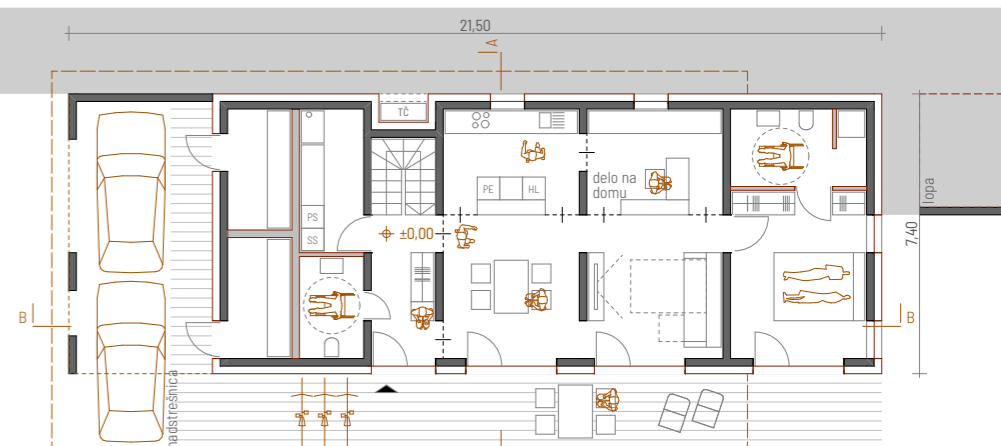
# 3+2-ČLANSKO GOSPODINJSTVO SAVINJSKA



PREREZ B-B



FLORIS MANSARDE



FLORIS PRITLIČJA, M 1:200



VHODNA FASADA

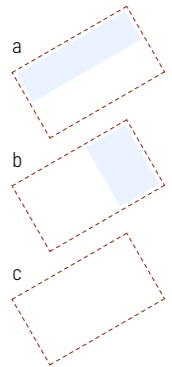
# ENOSTANOVANJSKA TIP A

MODULARNI SISTEM

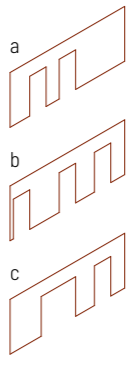
RASSTOČA HIŠA - PREOBLIKOVANJE MANSARDE

PRILAGODLJIVOST NA LOKALNE POGOJE

1. INŠTALACIJSKA STENA



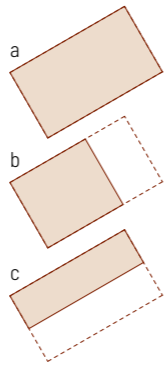
2. VZDOLŽNA STENA



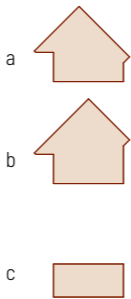
3. PREČNA STENA



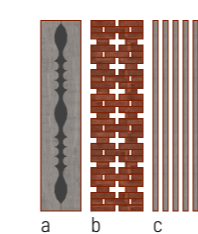
4. TALNA PLOŠČA



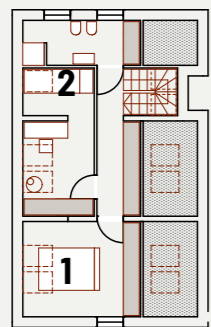
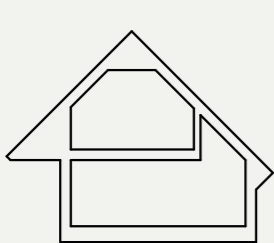
5. OBLIKA STREHE



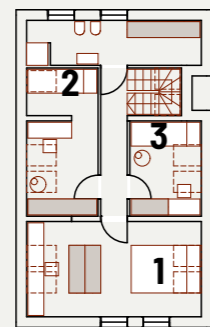
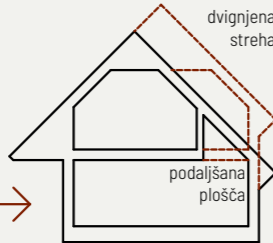
6. OBLIKOVALSKE ZNAČILNOSTI



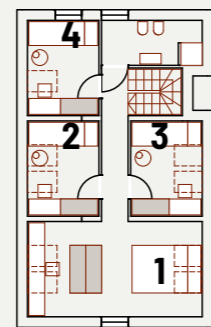
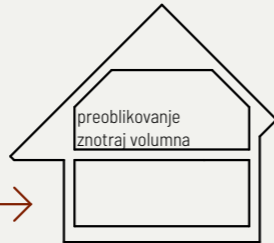
3 ČLANSKO GOSPODINJSTVO



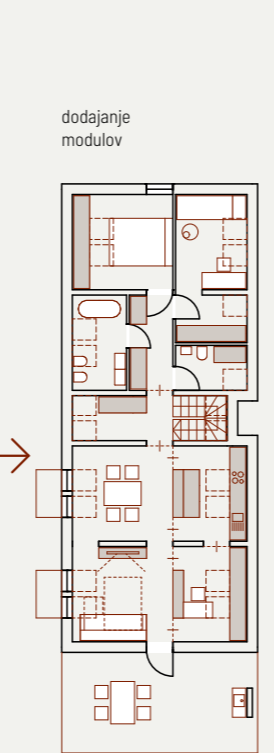
4 ČLANSKO GOSPODINJSTVO



5 ČLANSKO GOSPODINJSTVO



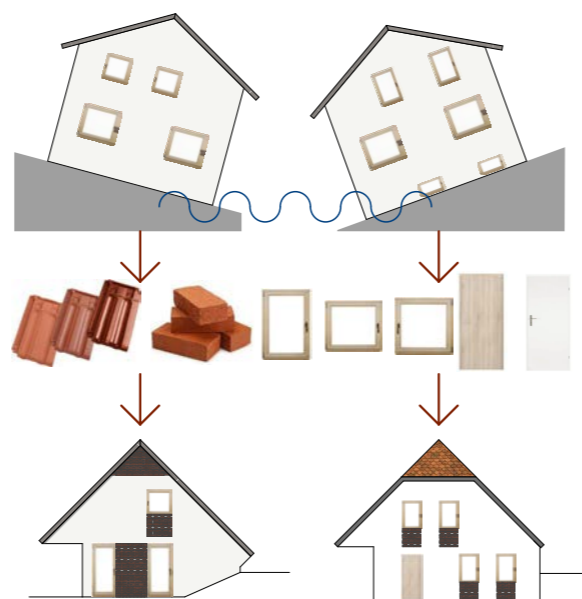
3+2 ČLANSKO GOSPODINJSTVO



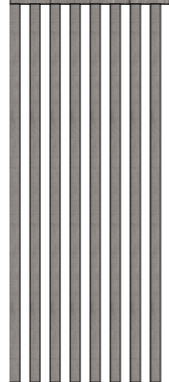
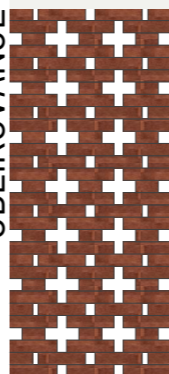
prilagodljivost na lokalne pogoje - vhod z druge strani (nagib terena v drugo smer, raven teren)

možnost dela na domu - ločen delovni prostor (ločen vhod)

PONOVA UPORABA



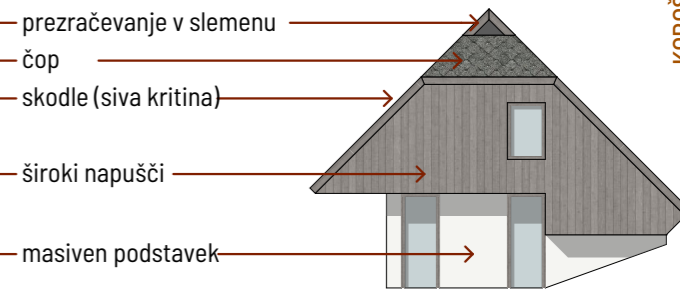
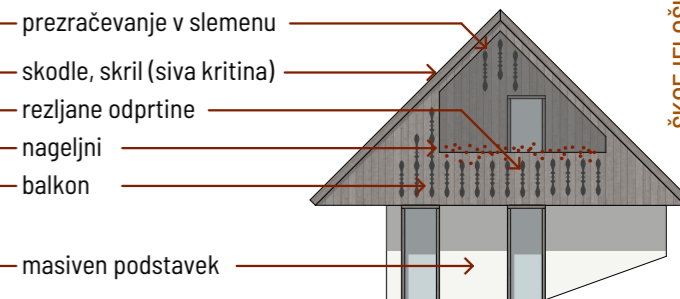
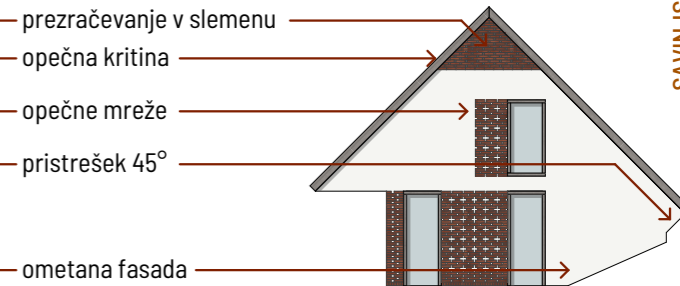
OBLIKOVANJE



prezračevanje v slemenu  
opečna kritina  
opečne mreže  
pristrešek 45°

prezračevanje v slemenu  
skodle, skril (siva kritina)  
rezljane odprtine  
nageljni  
balkon

prezračevanje v slemenu  
čop  
skodle (siva kritina)  
široki napušči

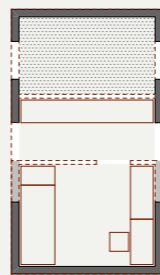


SAVINJSKA

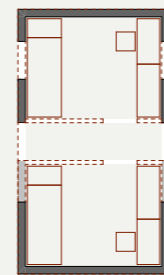
ŠKOFJELOŠKA

KOROŠKA

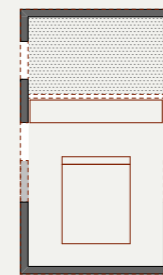
PRIMERI SESTAVLJENIH MODULOV



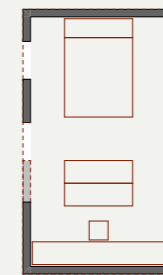
otroška soba



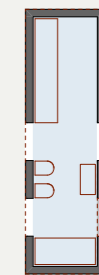
dve otroški sobi



spalnica



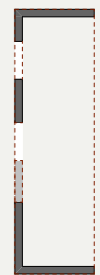
spalnica s kabinetom



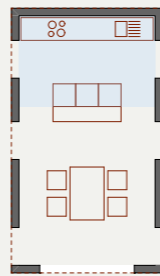
kopalnica



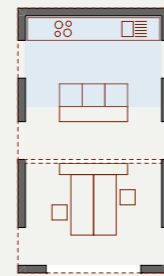
stopnice, soba



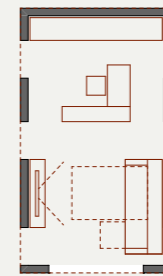
balkon



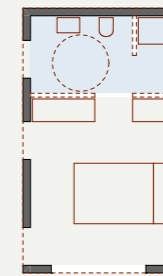
kuhinja in jedilnica



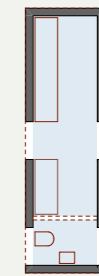
kuhinja in ločena pisarna



dnevna soba, delovni prostor



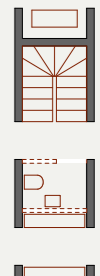
spalnica s kopalnico



servisni prostori



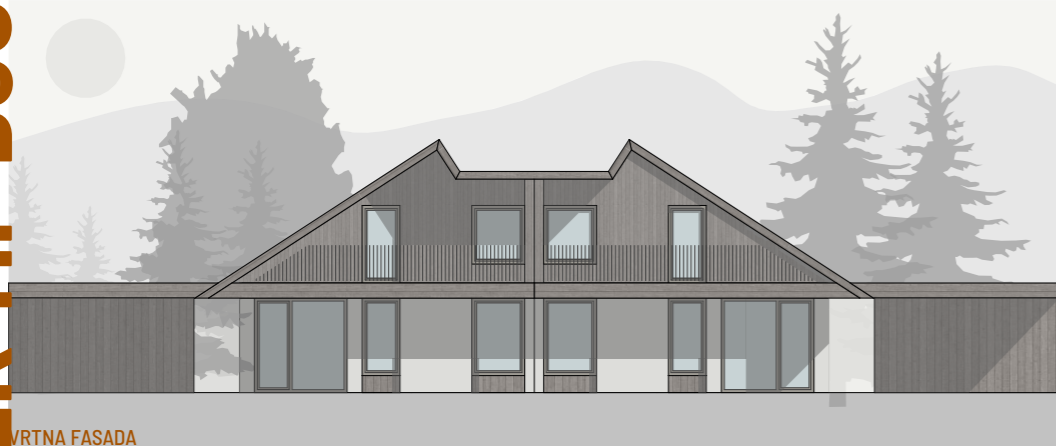
stopnice, vetrolov



stopnice, izzidek

# DVOJČEK TIP B3S

# POLOŽNA STREHA



VRTNA FASADA



VRTNA FASADA

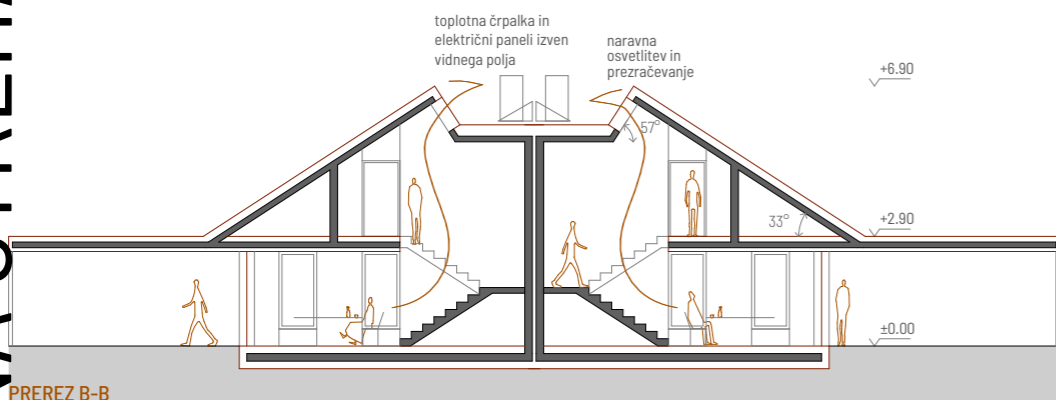
# SAVINJSKA



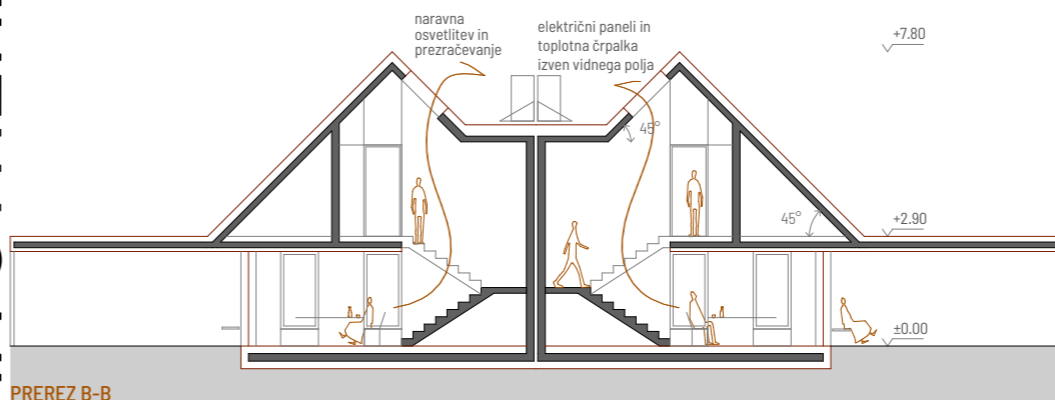
CESTNA FASADA



CESTNA FASADA

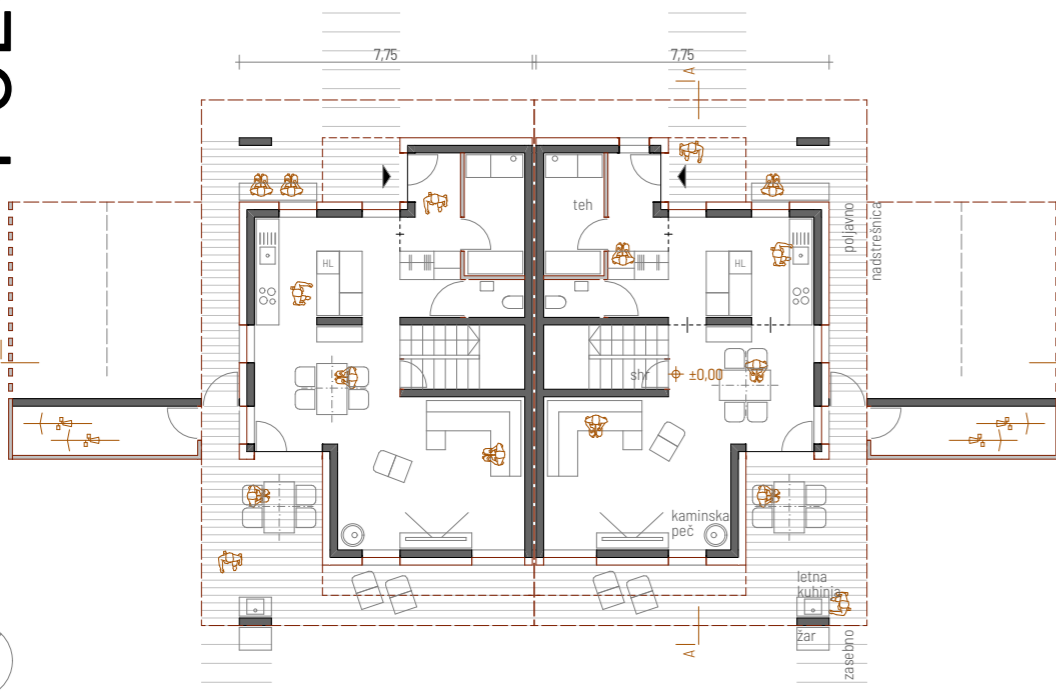


PREREZ B-B

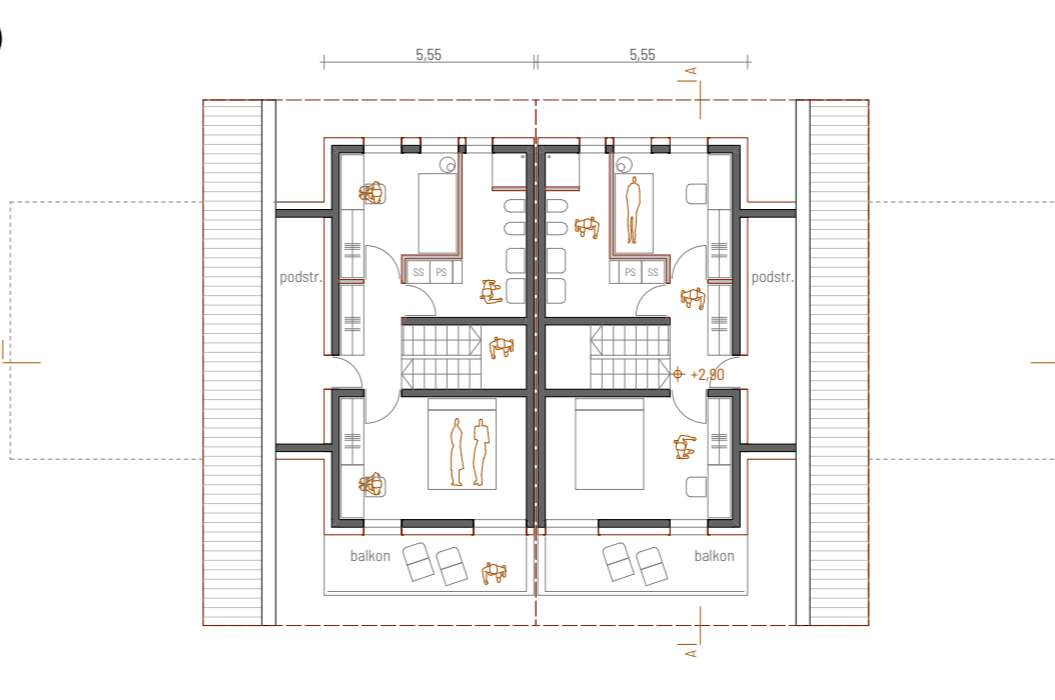


PREREZ B-B

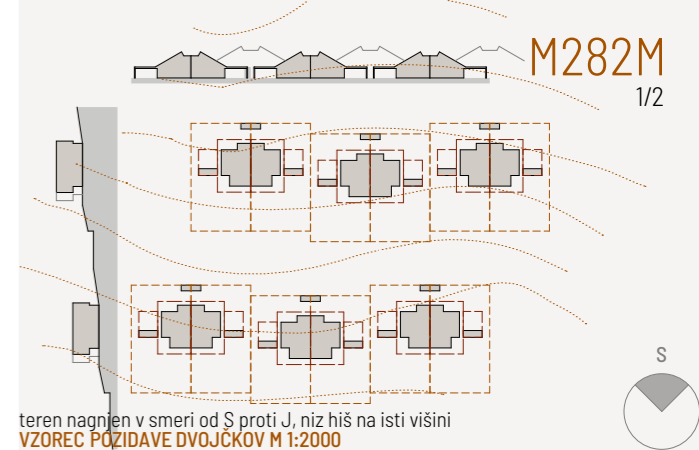
# STRMA STREHA



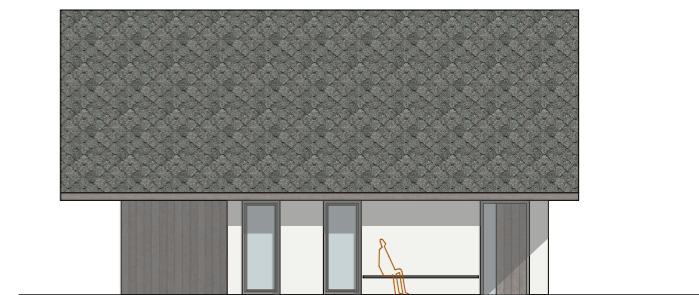
TLORIS PRITLIČJA, M 1:200



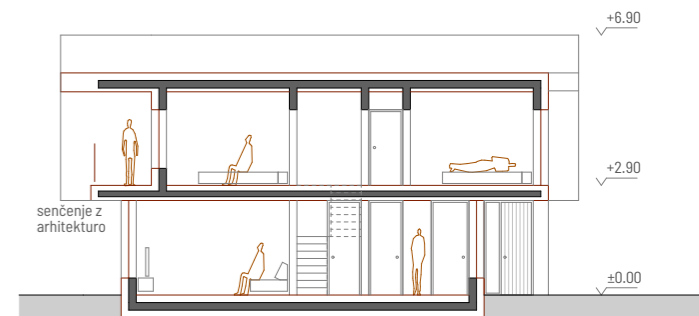
TLORIS MANSARDE



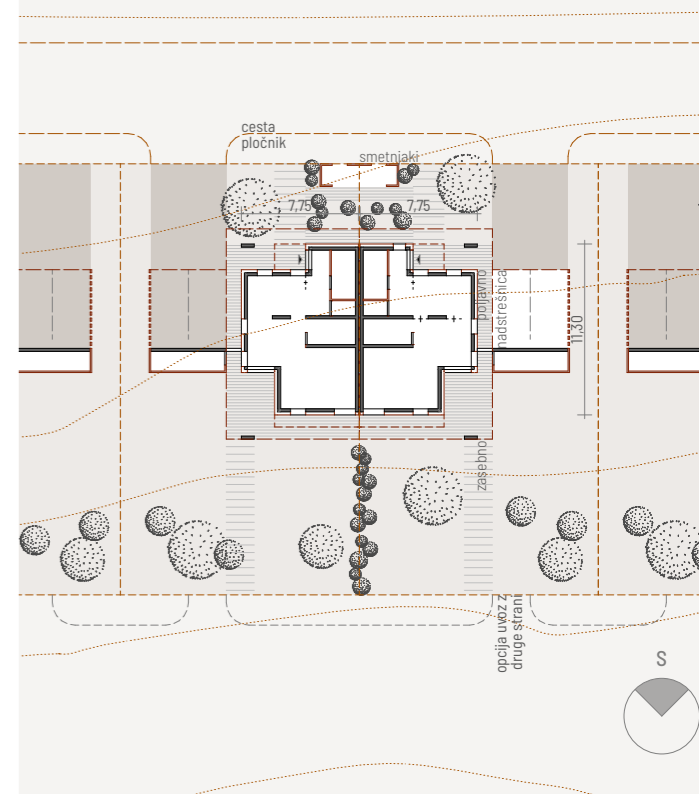
teren nagnjen v smeri od S proti J, niz hiš na isti višini  
VZOREC POZIDAVE DVOJČKOV M 1:2000



STRANSKA FASADA - DVOJČKI IN VRSTNE HIŠE



PREREZ A-A - DVOJČKI IN VRSTNE HIŠE



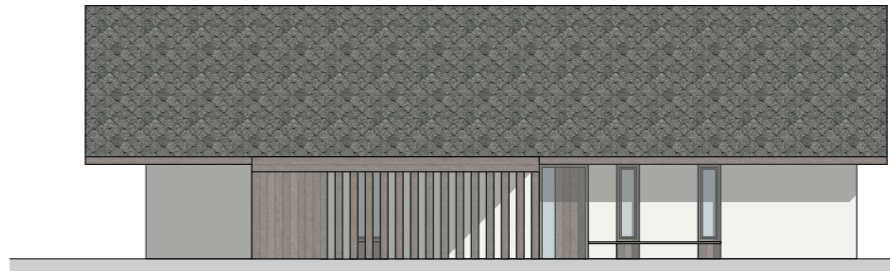
ORGANIZACIJA GRADBENE PARCELE M 1:500



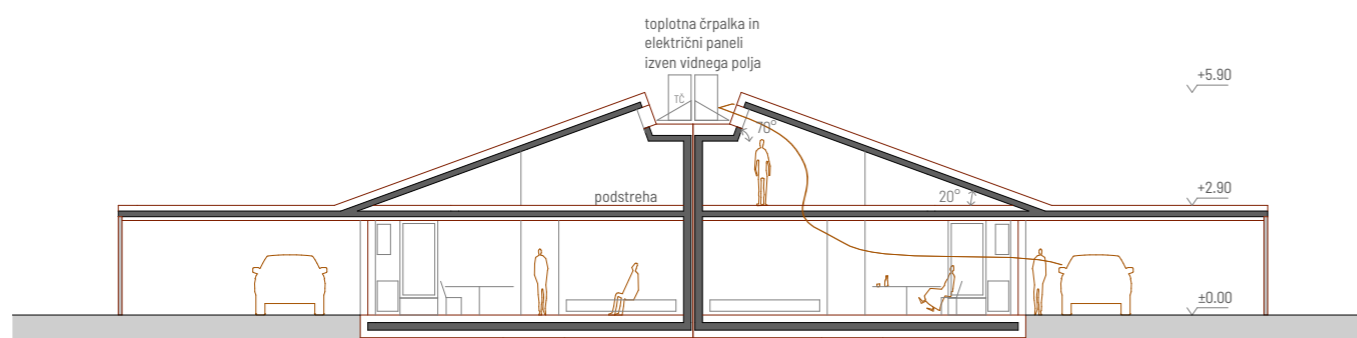
CESTNA FASADA



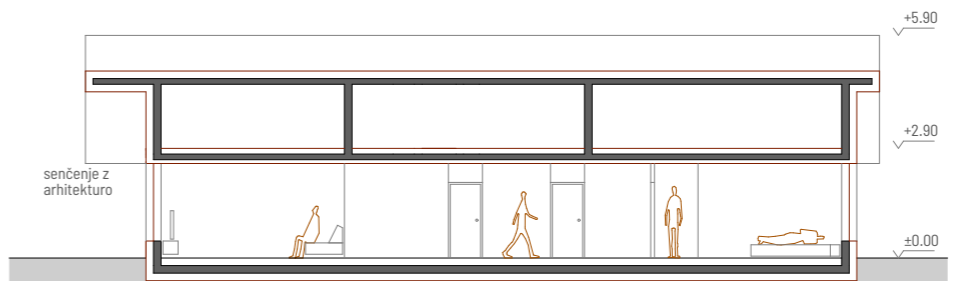
VRTNA FASADA



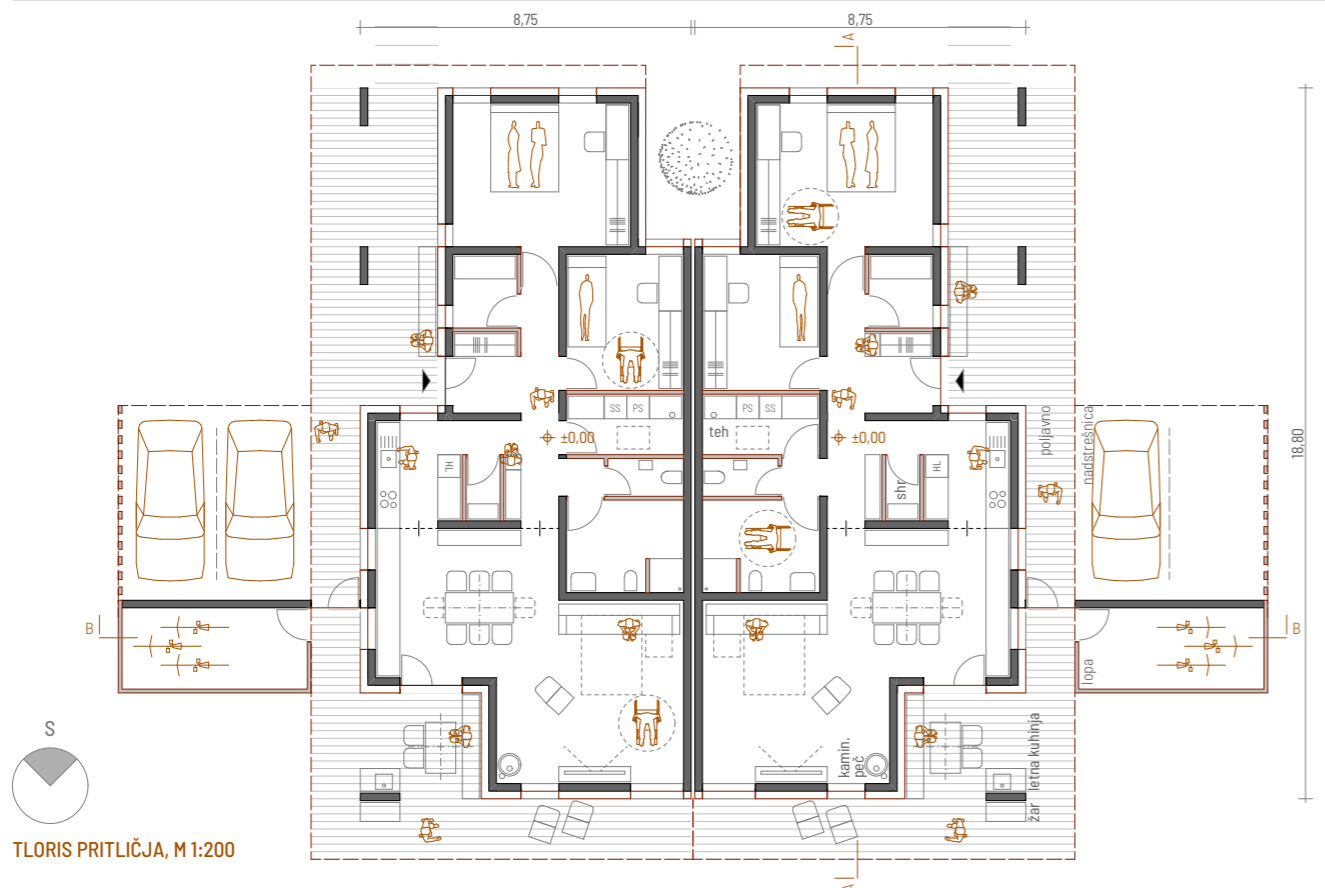
STRANSKA FASADA



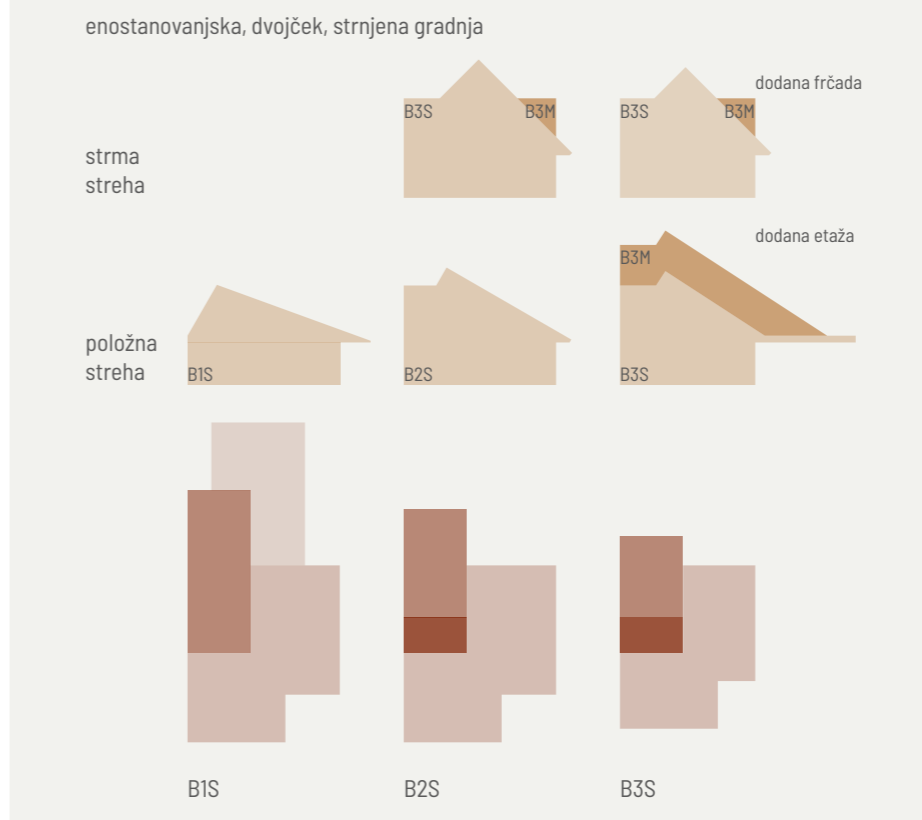
PREREZ B-B



PREREZ A-A



TLORIS PRITLIČJA, M 1:200



SHEMATSKI PRIKAZ MODULARNOSTI TIP B

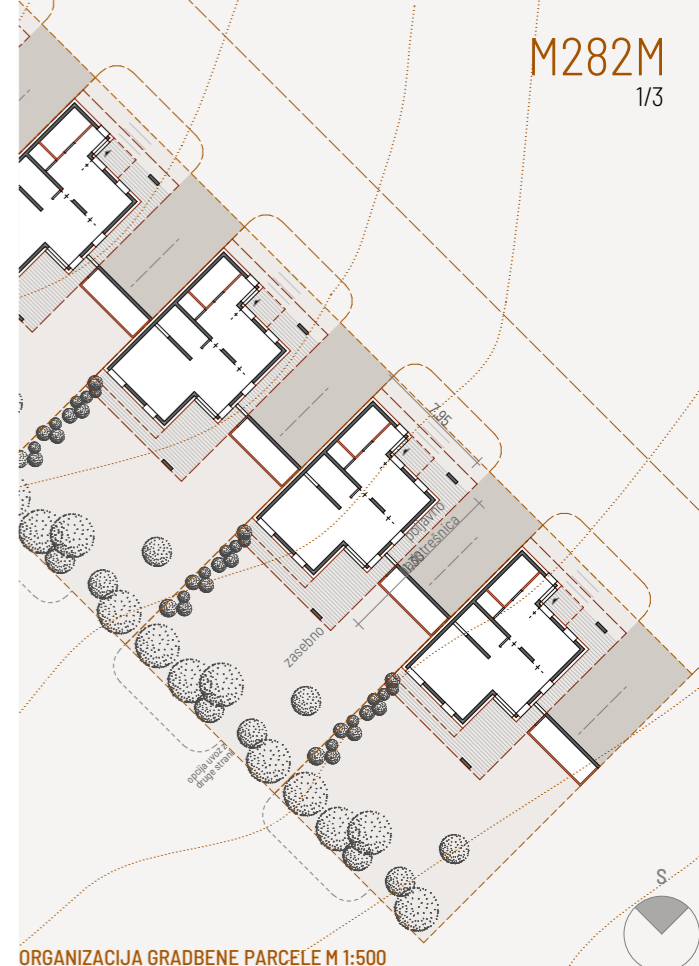
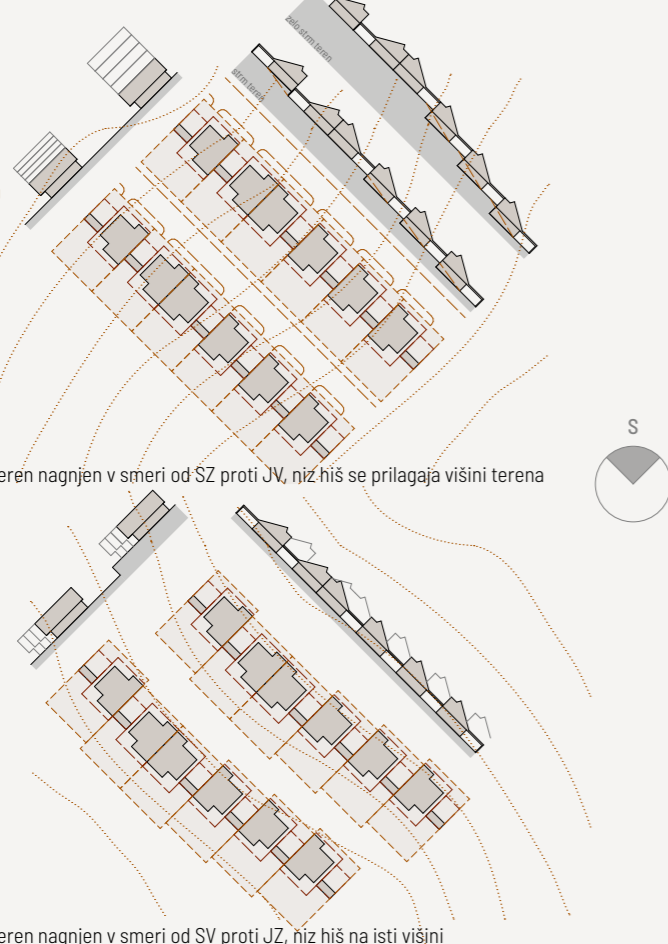


PRILAGAJANJE NA KONFIGURACIJO TERENA

# STRNJENA GRADNJA TIP B3S, B3M

VZORCI POZIDAVE M 1:2000

## SAVINJSKA



M282M  
1/3

