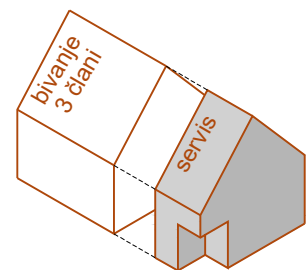
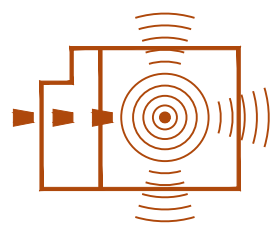


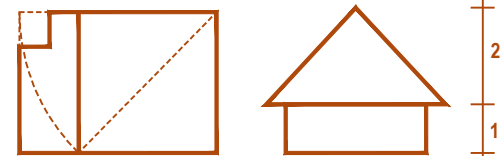
TRIČLANSKO GOSPODINJSTVO | SAVINJSKA REGIJA



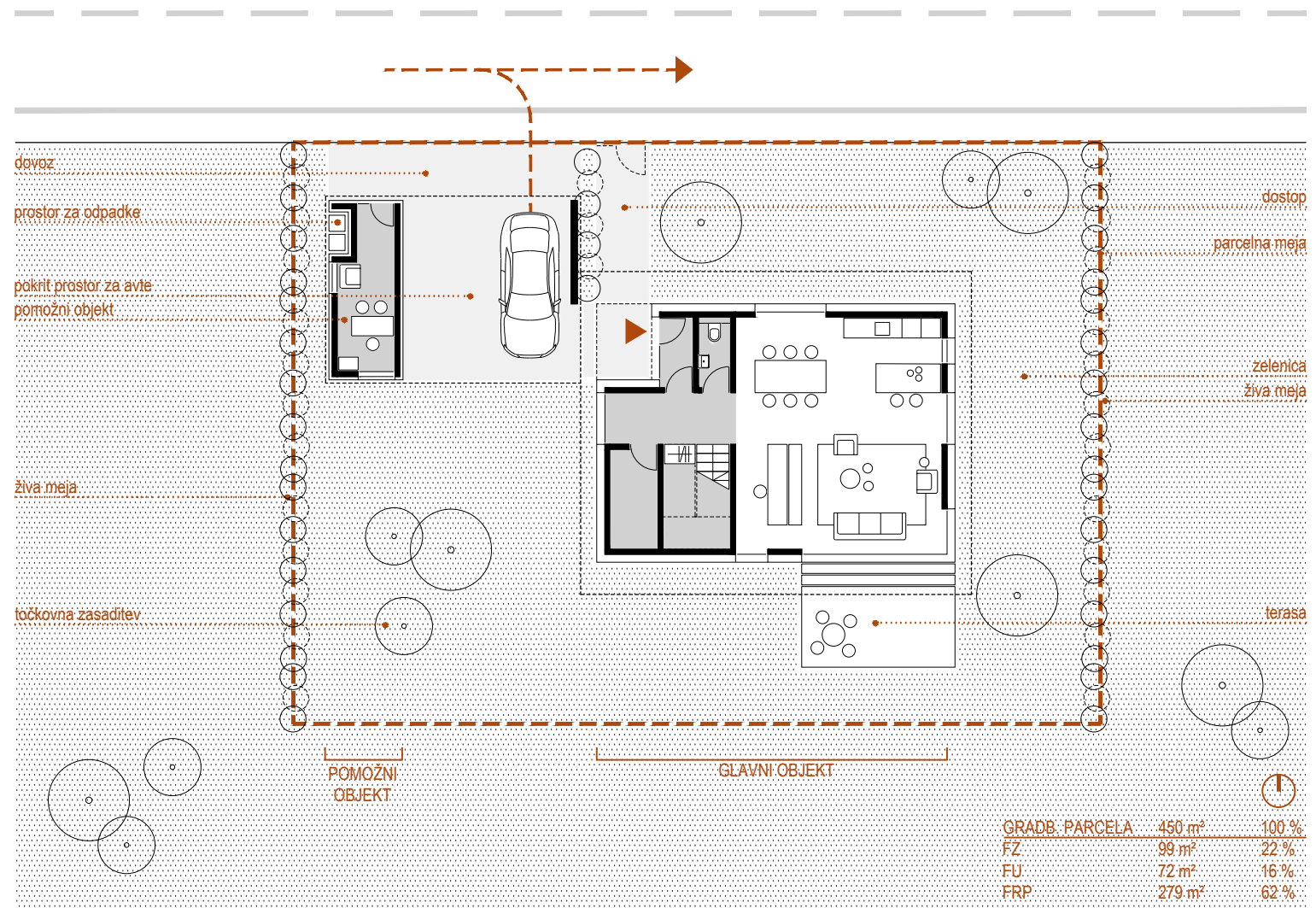
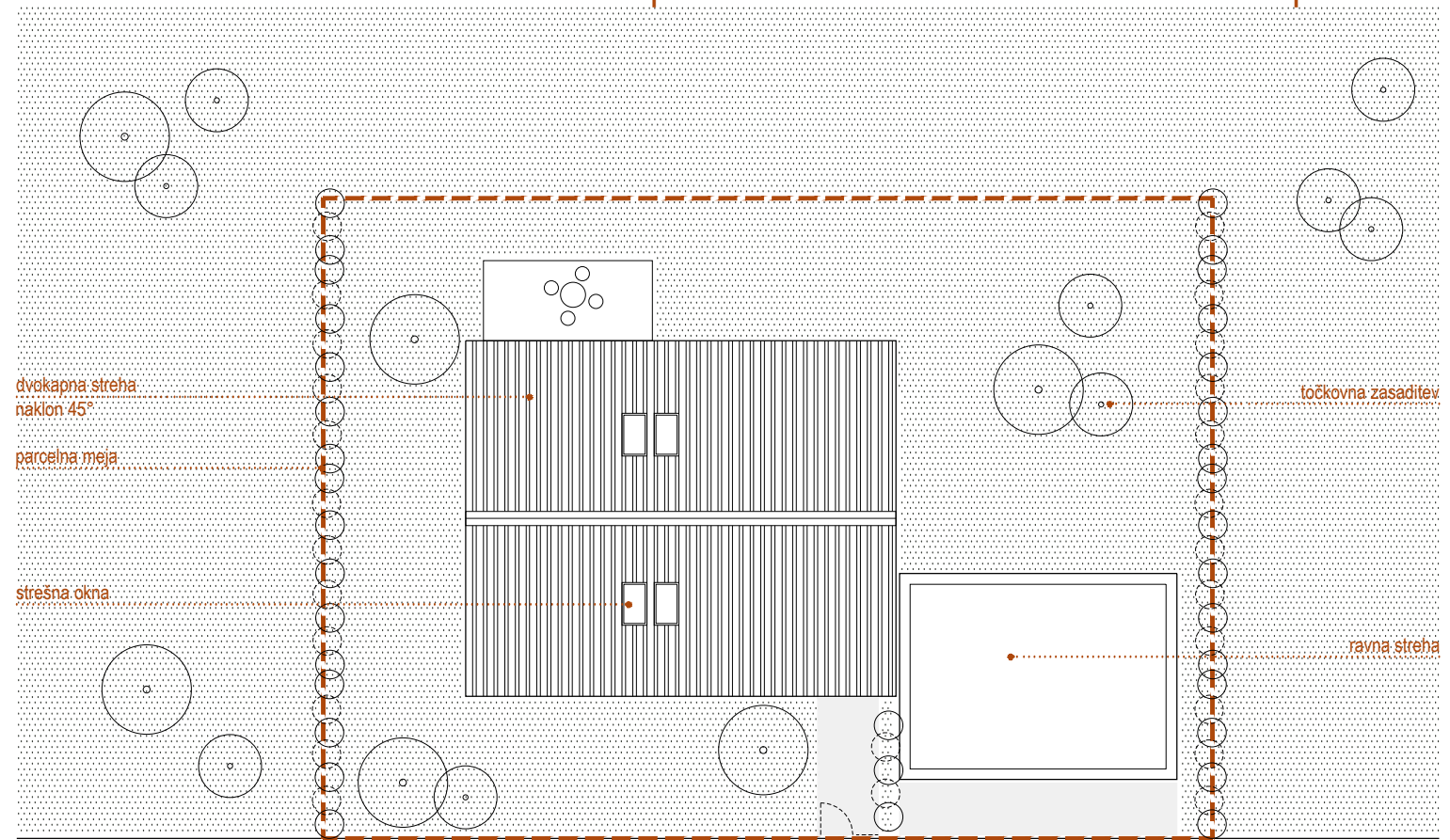
MODULARNOST
rastoča stavba



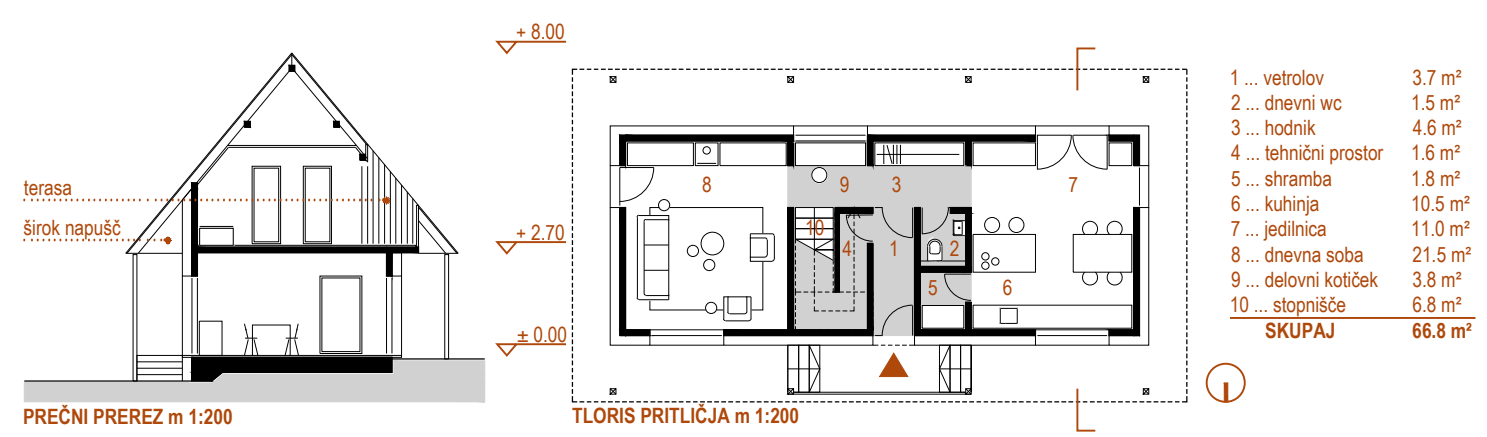
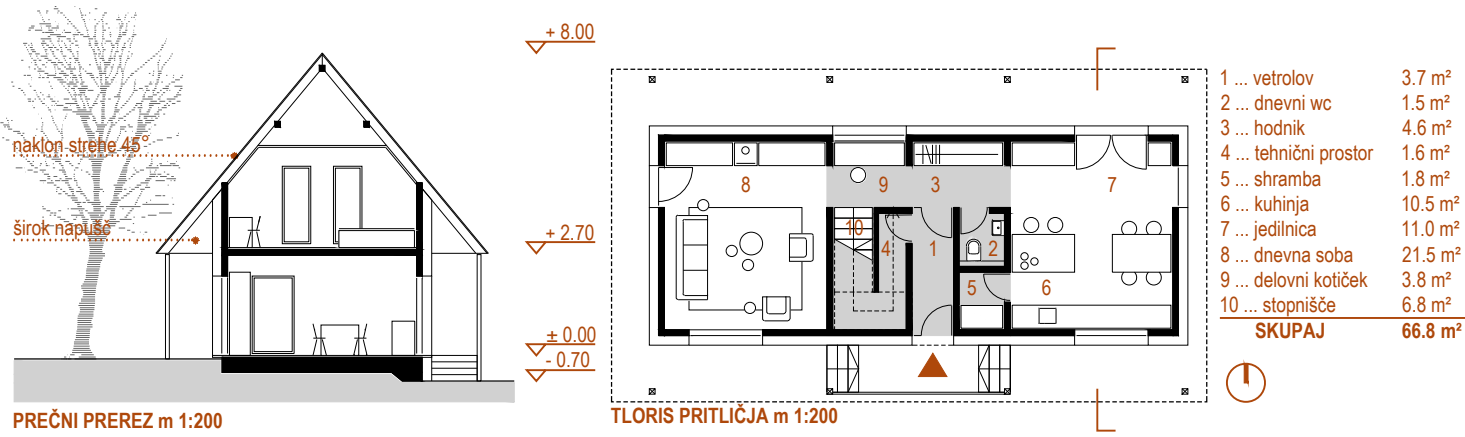
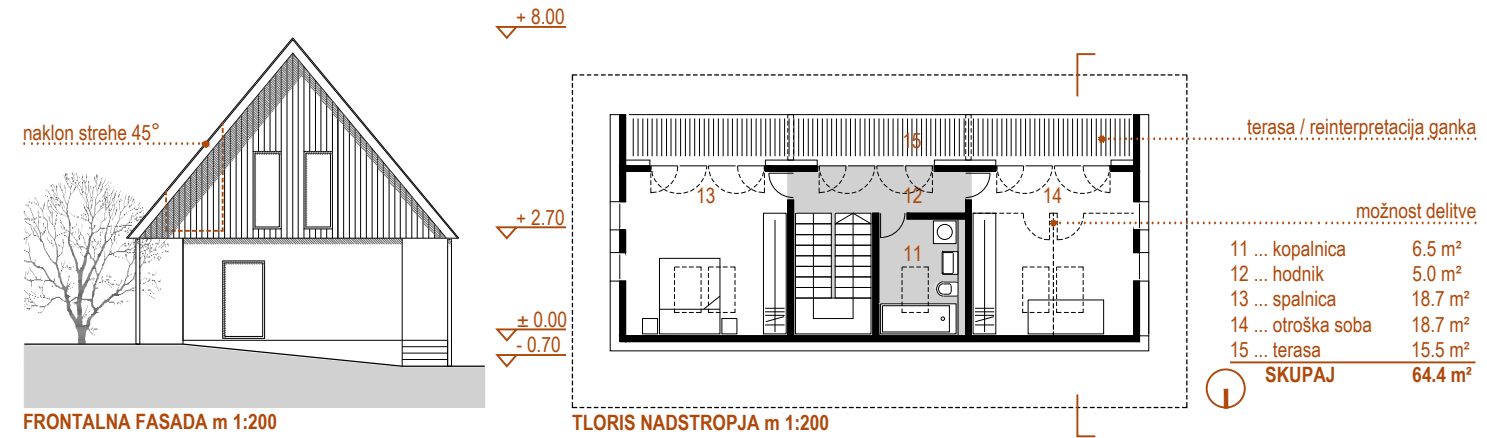
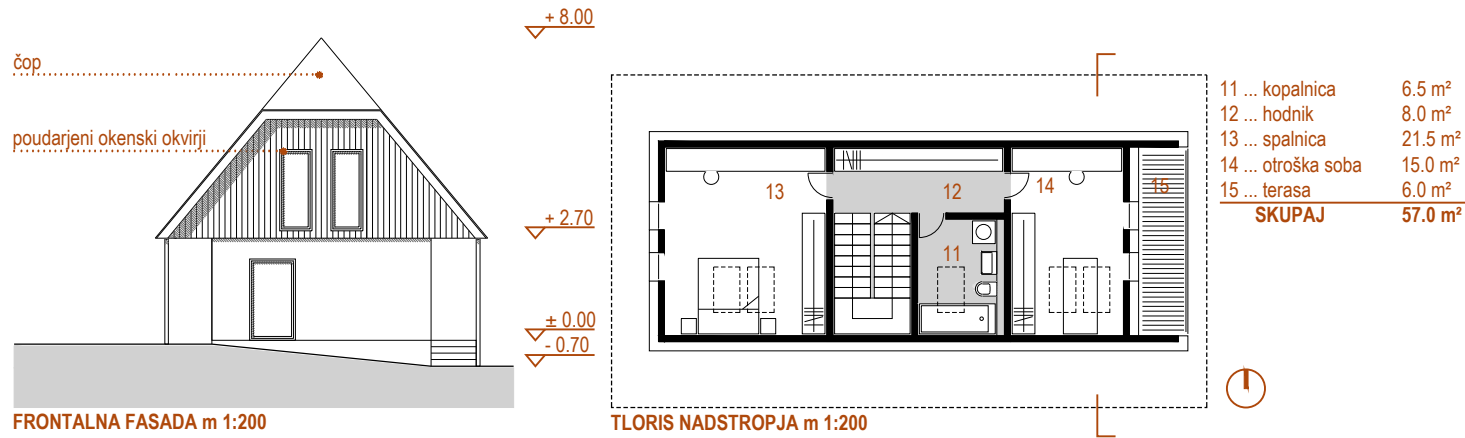
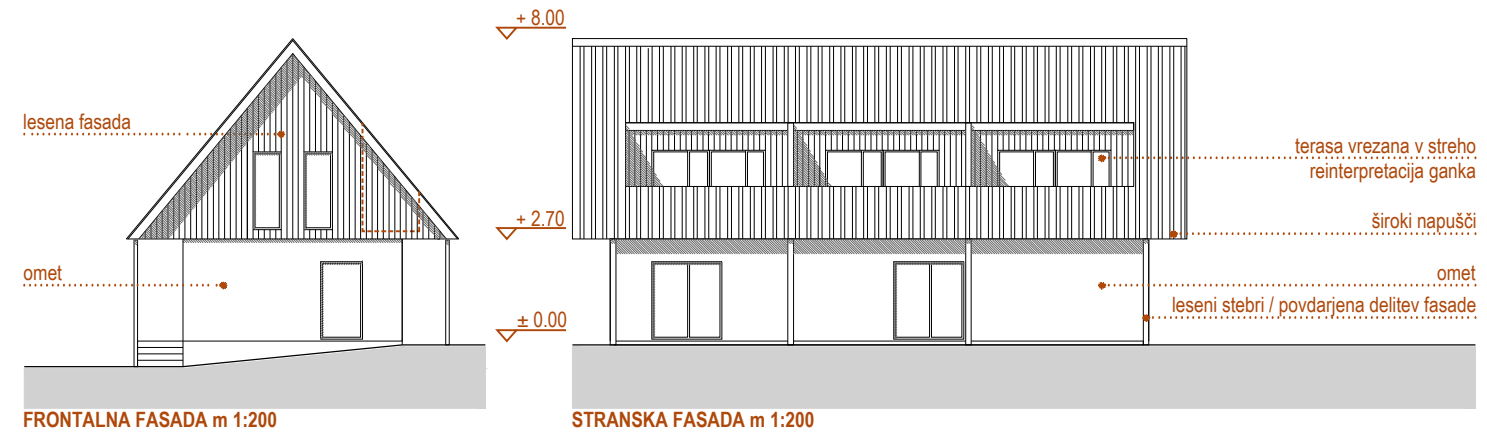
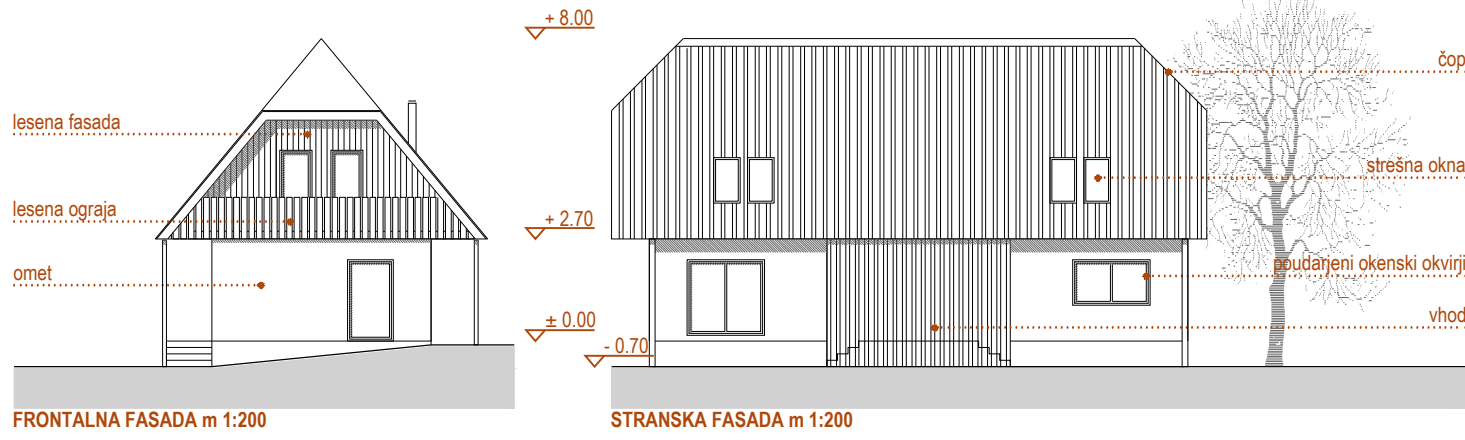
KOMUNIKACIJA V OBJEKTU / Z NARAVO
prilagajanje lokacijskim pogojem



VELIKOST IN RAZMERJA
tradicija



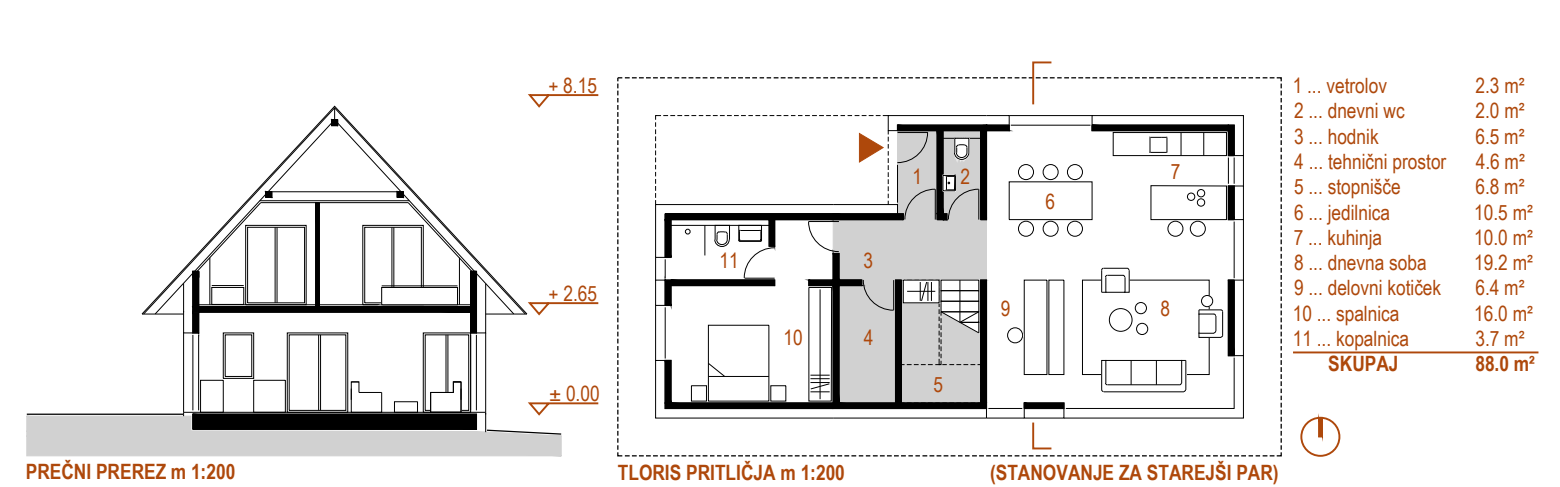
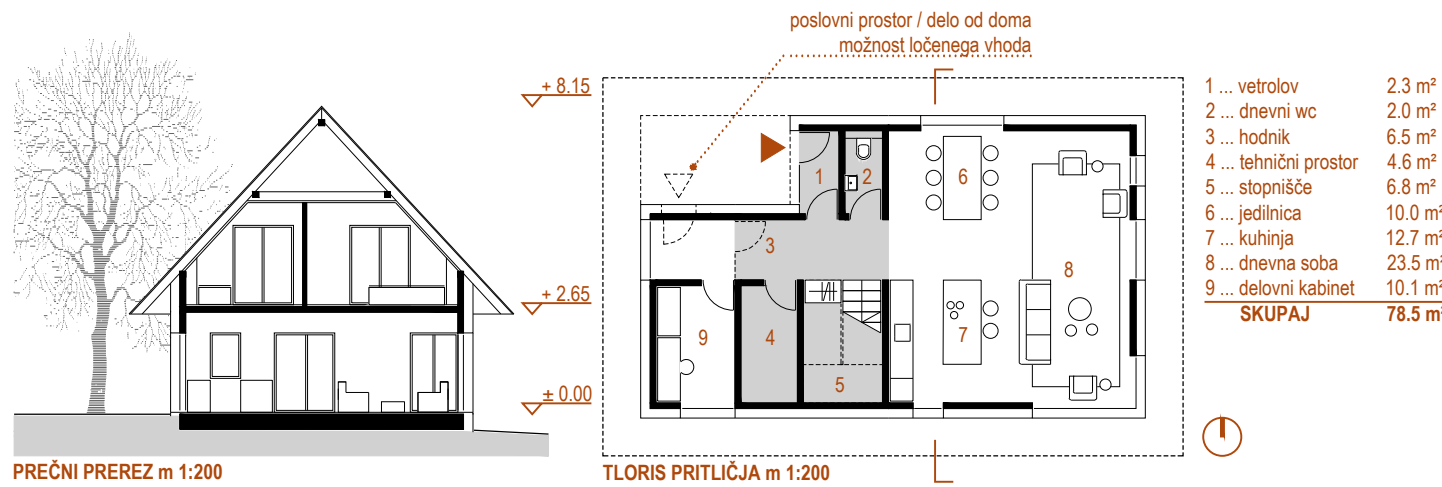
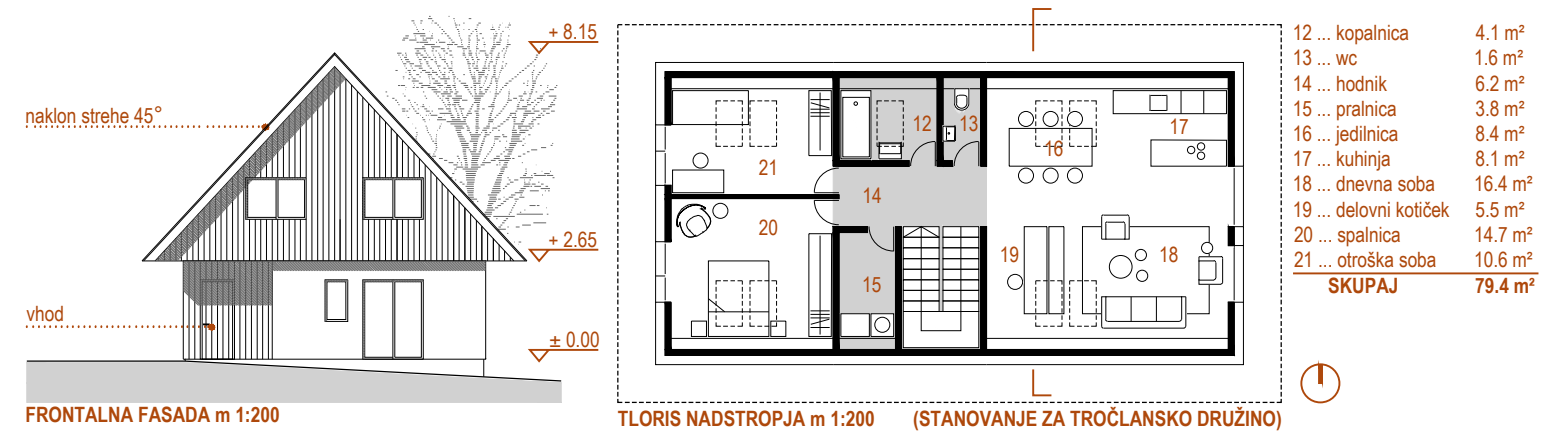
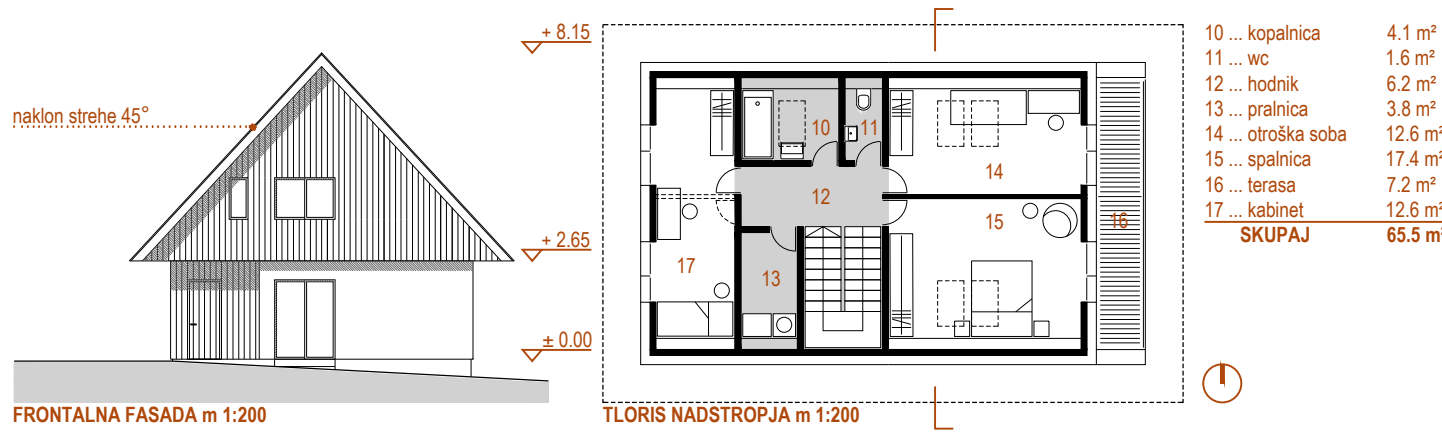
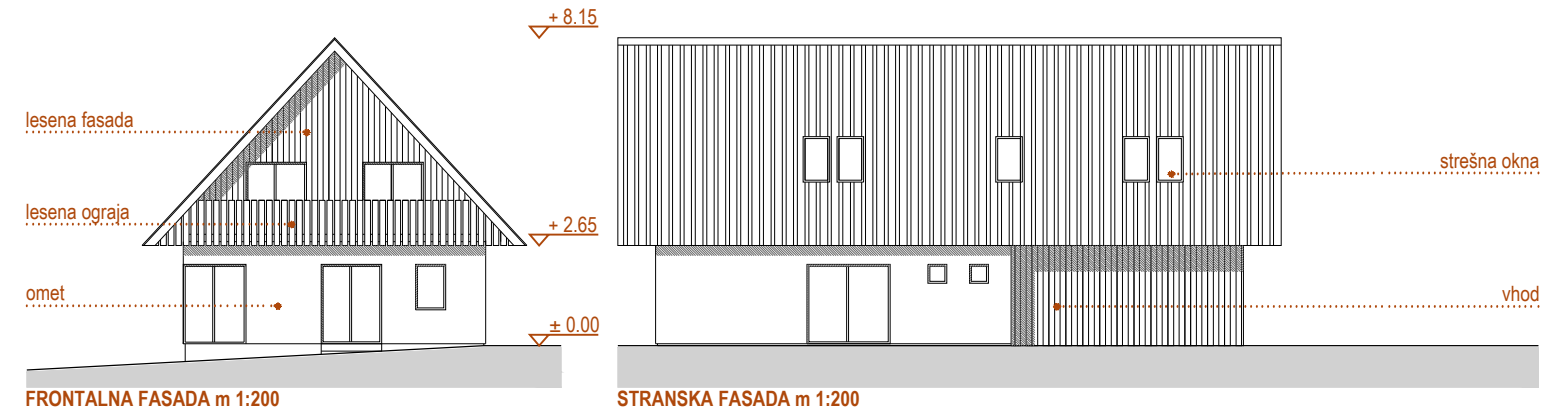
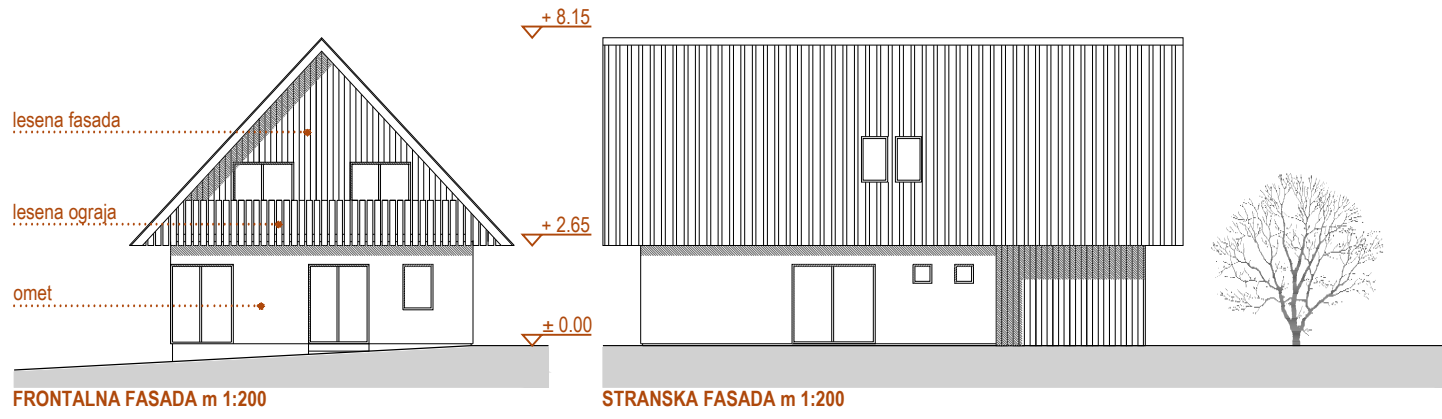
GRADB. PARCELA	450 m ²	100 %
FZ	98 m ²	22 %
FU	72 m ²	16 %
FRP	279 m ²	62 %



TRIČLANSKO GOSPODINJSTVO | KOROŠKA REGIJA

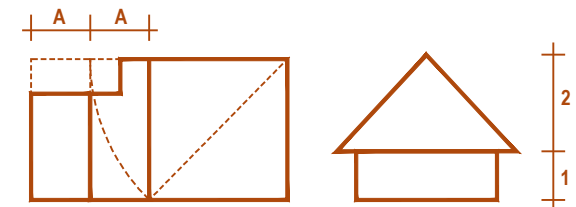
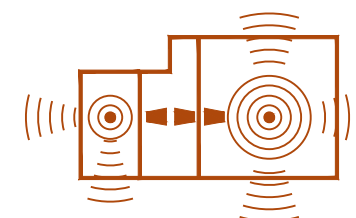
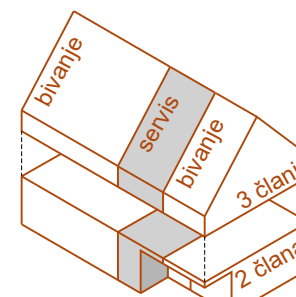
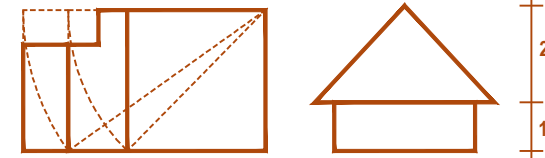
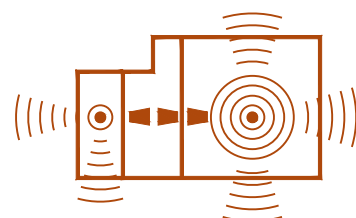
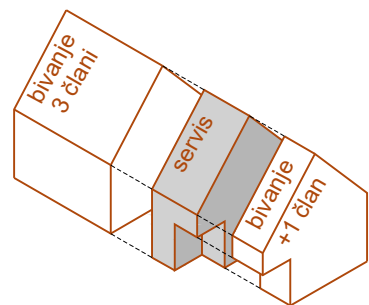
TRIČLANSKO GOSPODINJSTVO | ŠKOFJELOŠKA REGIJA





ŠTIRI IN VEČČLANSKO GOSPODINJSTVO | SAVINJSKA REGIJA

TRIČLANSKO GOSPODINJSTVO + STAREJŠI PAR | SAVINJSKA REGIJA



MODULARNOST
rastoča stavba

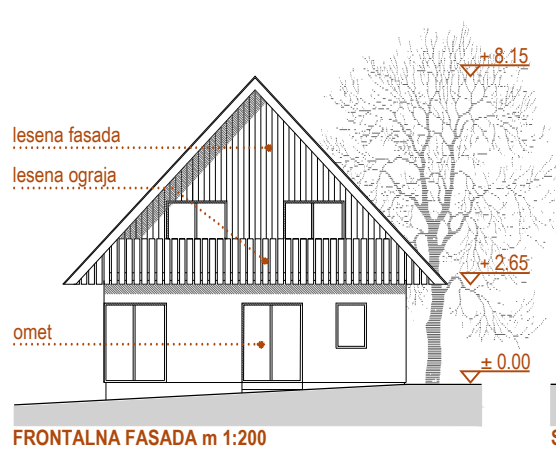
KOMUNIKACIJA V OBJEKTU / Z NARAVO
prilagajanje lokacijskim pogojem

VELIKOST IN RAZMERJA
tradicija

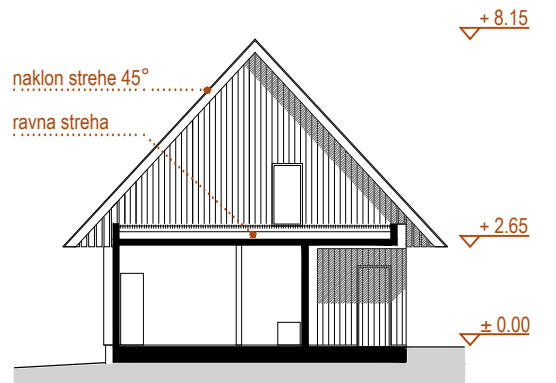
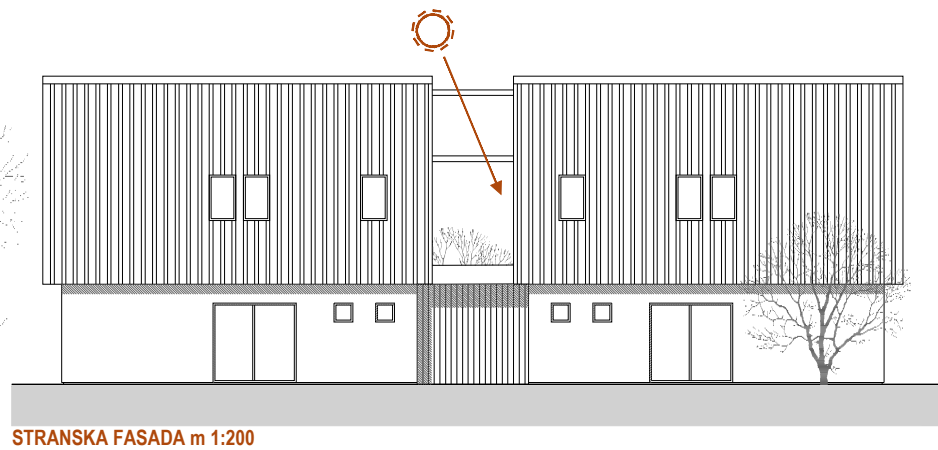
MODULARNOST
rastoča stavba

KOMUNIKACIJA V OBJEKTU / Z NARAVO
prilagajanje lokacijskim pogojem

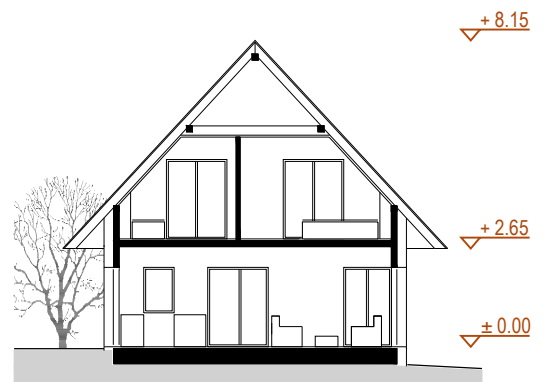
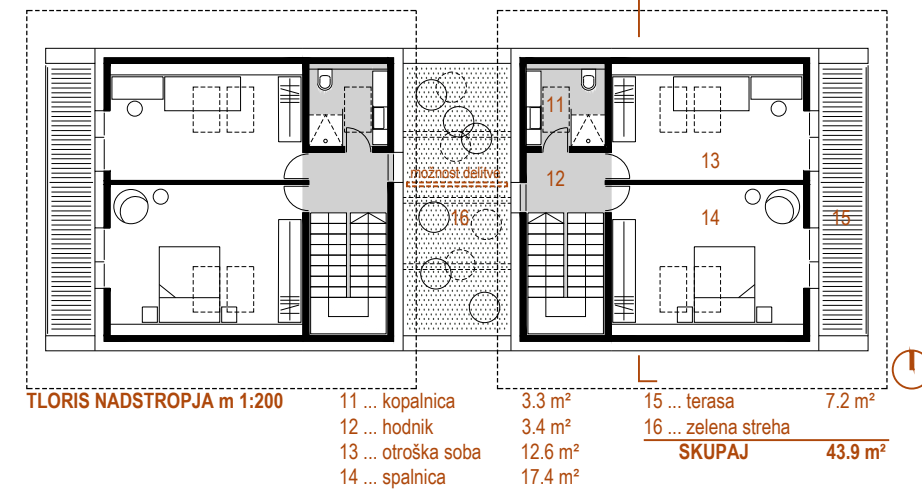
VELIKOST IN RAZMERJA
tradicija



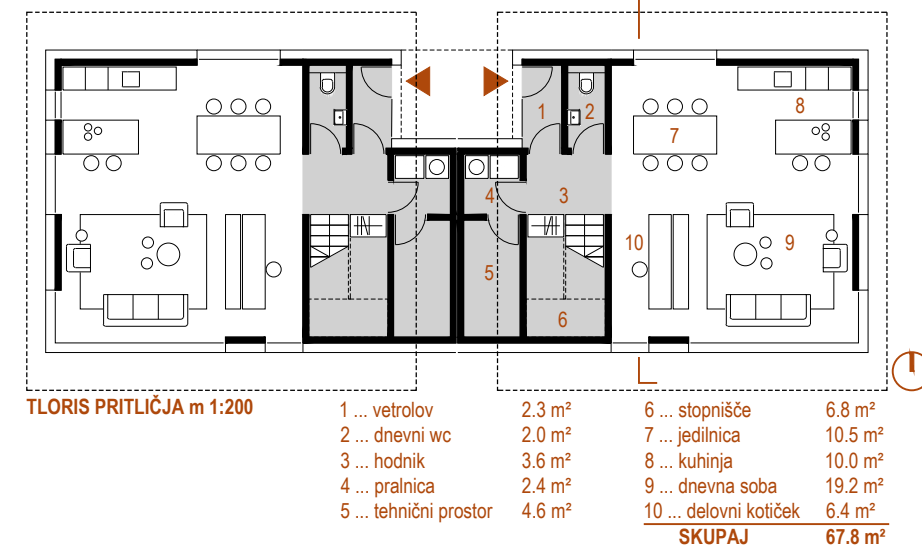
FRONTALNA FASADA m 1:200



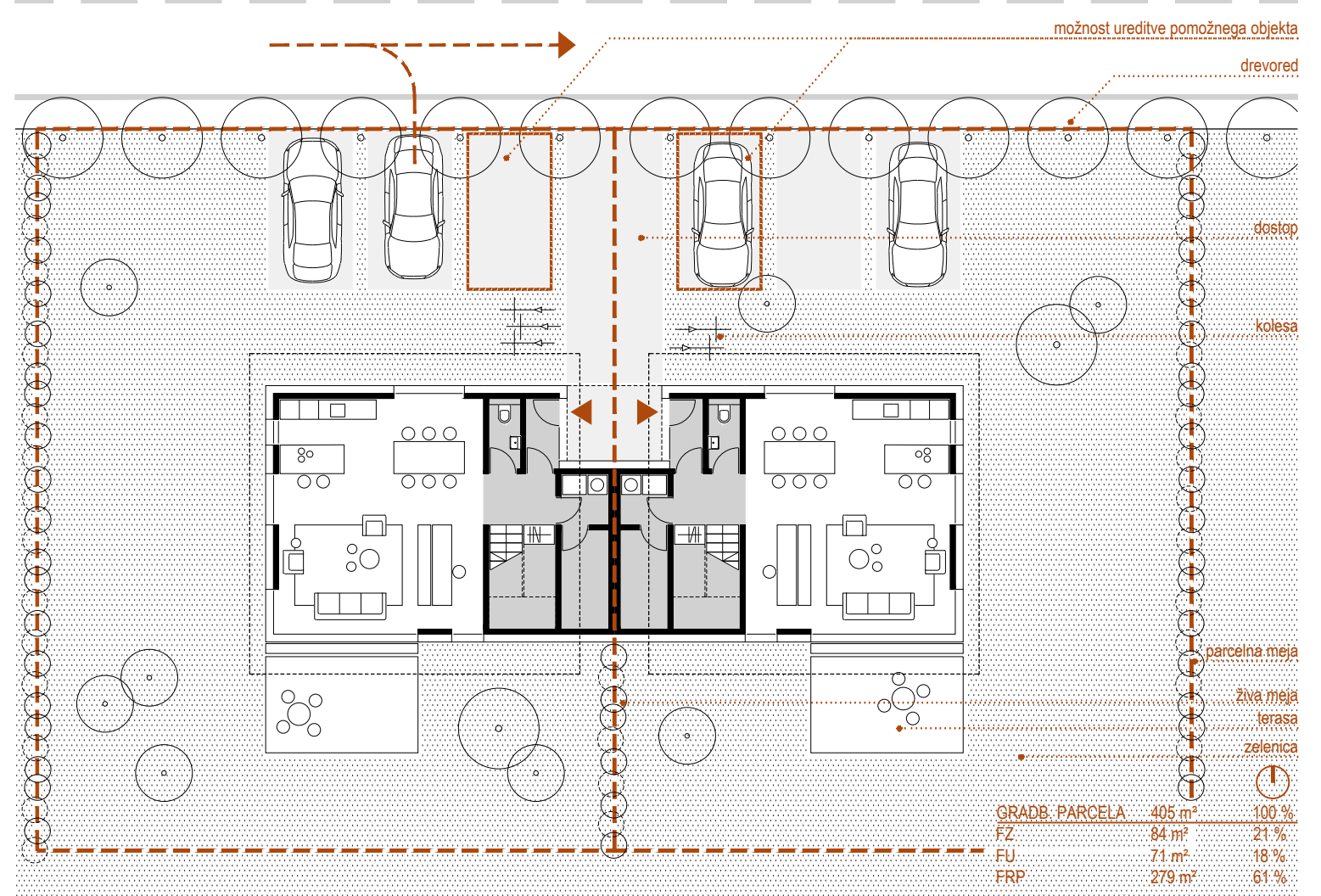
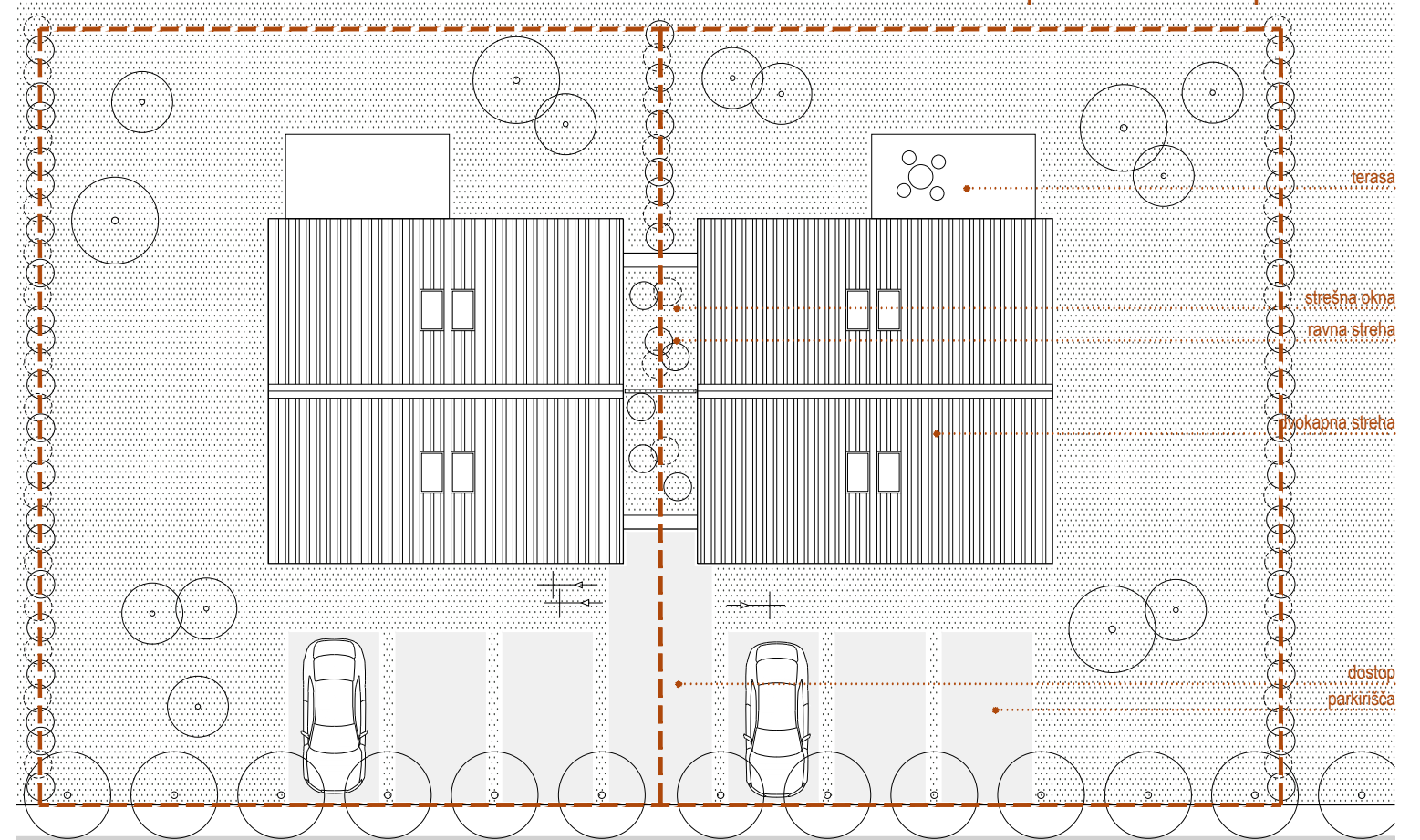
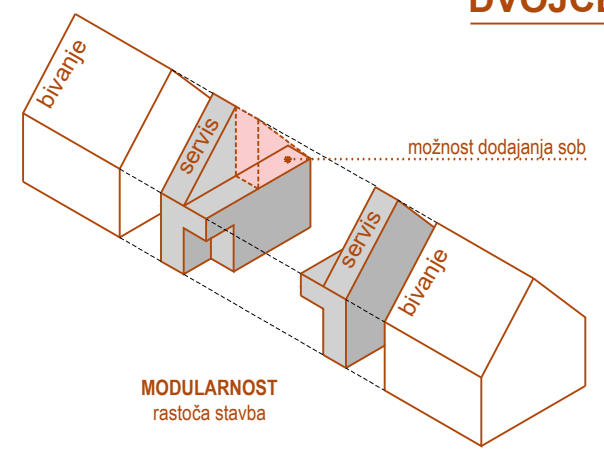
PREČNI PREREZ / FASADA m 1:200

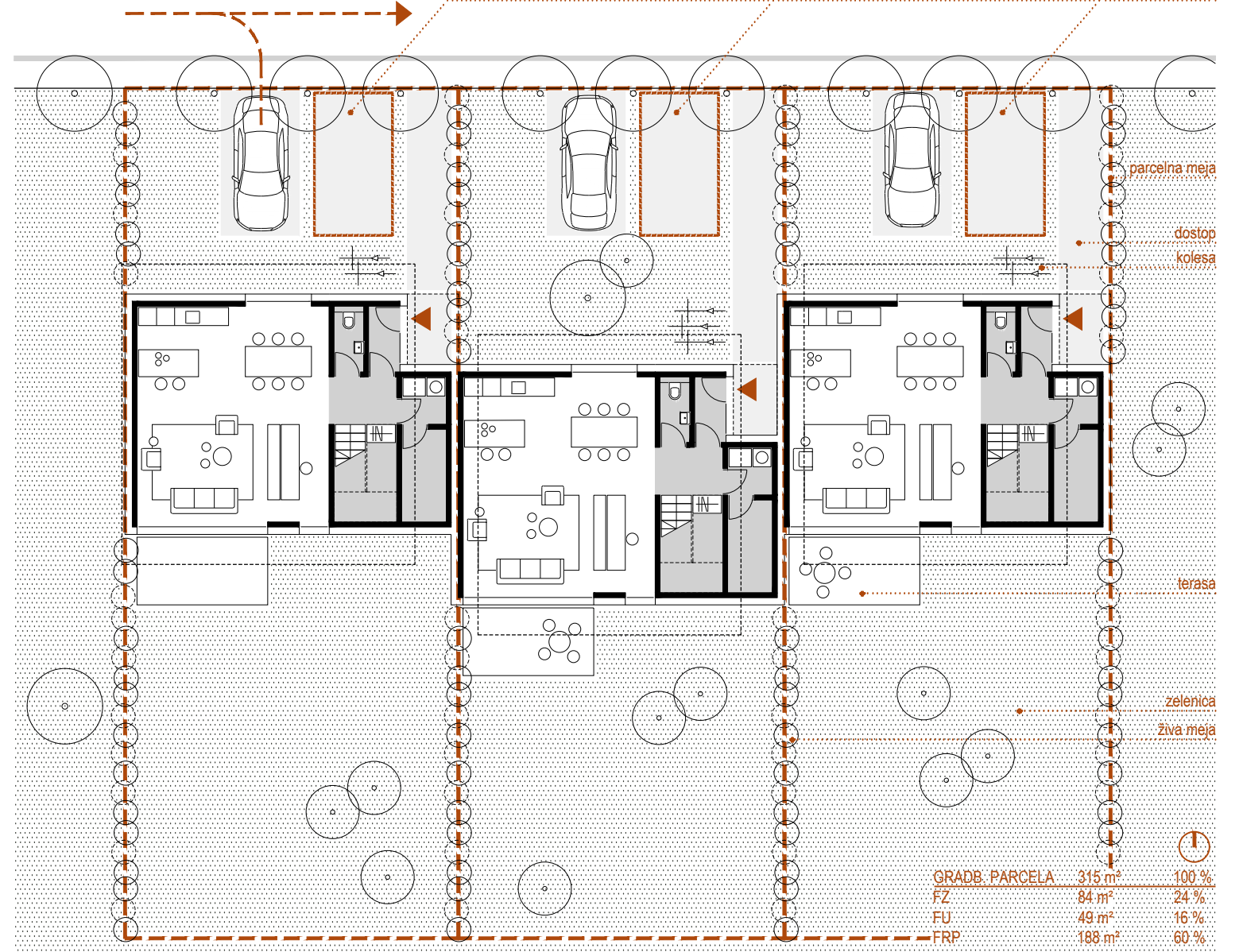
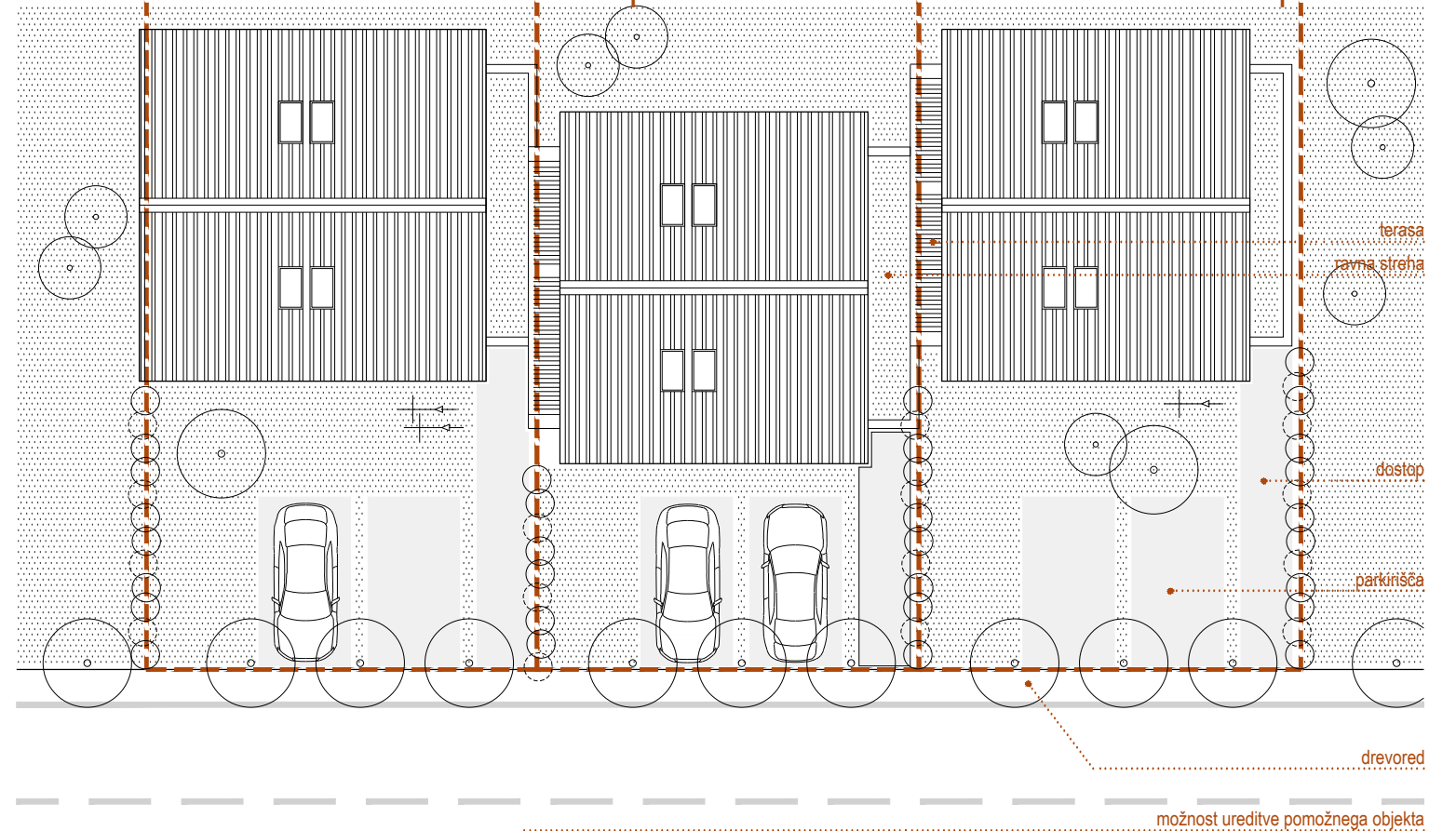
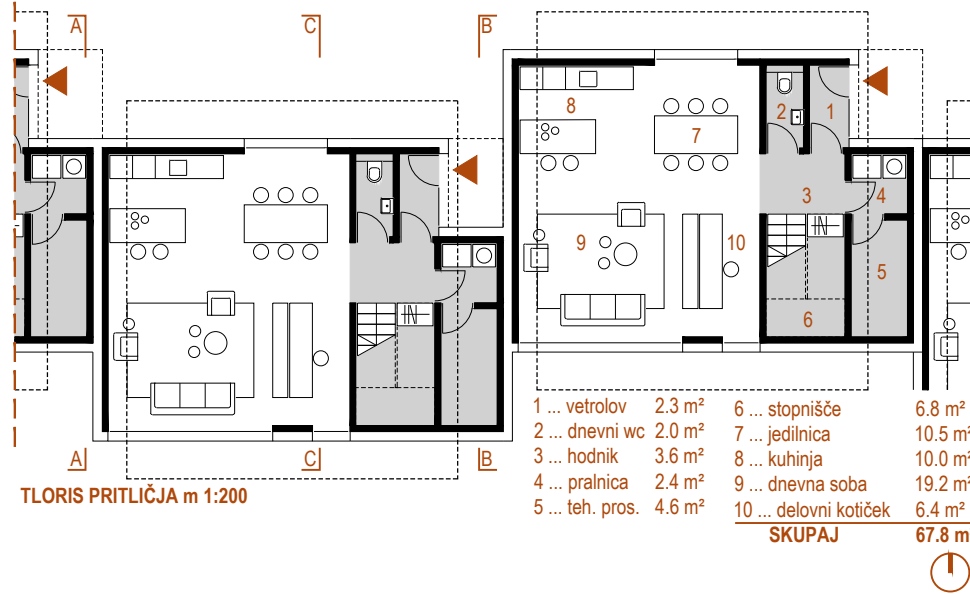
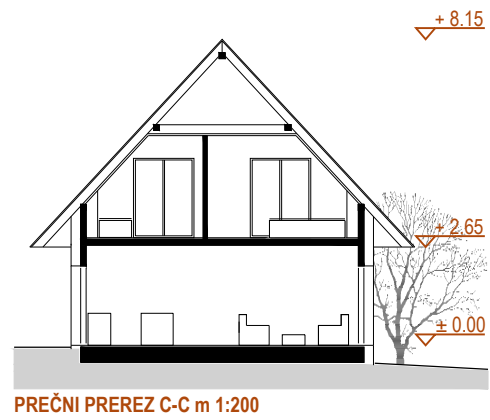
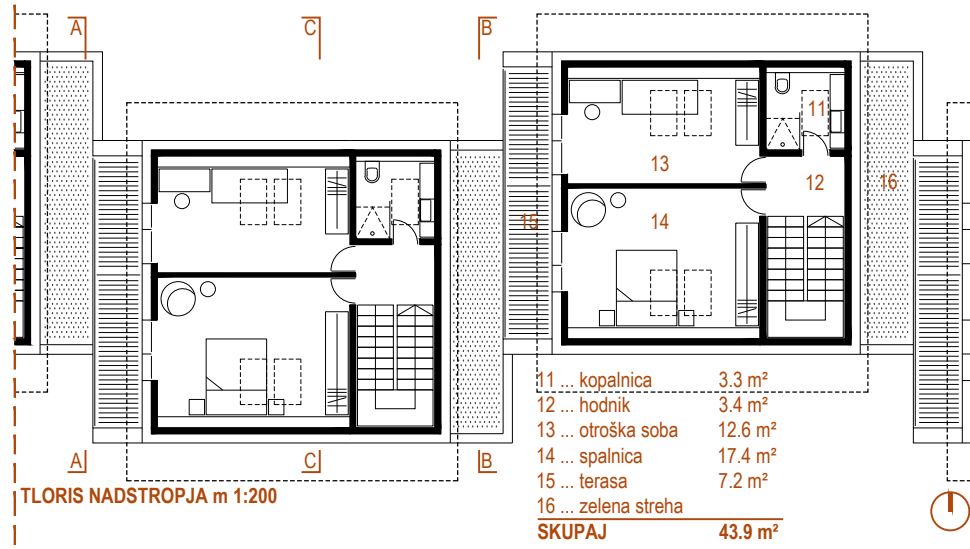
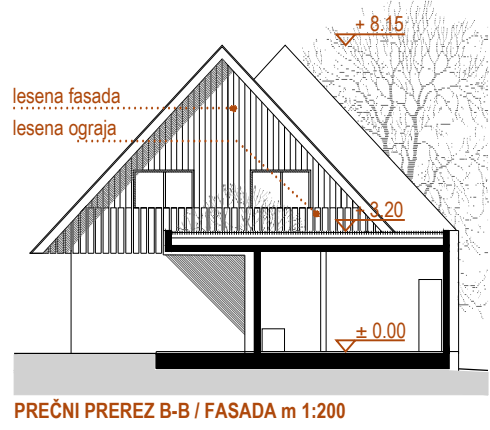
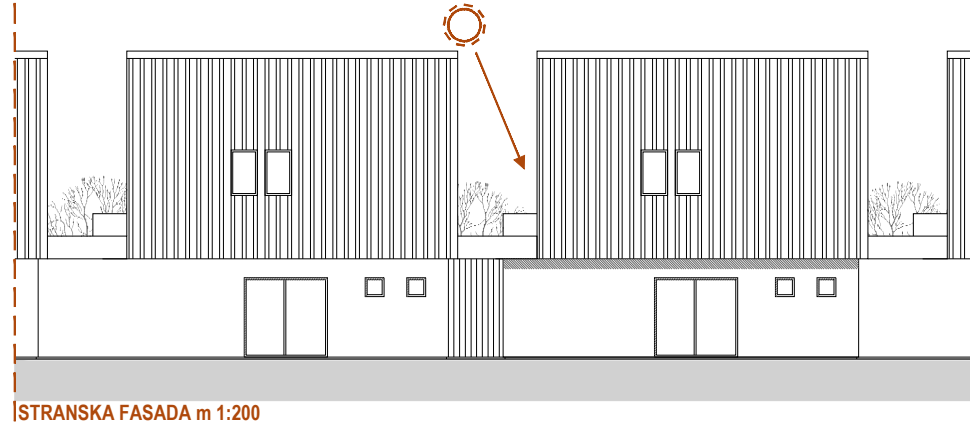
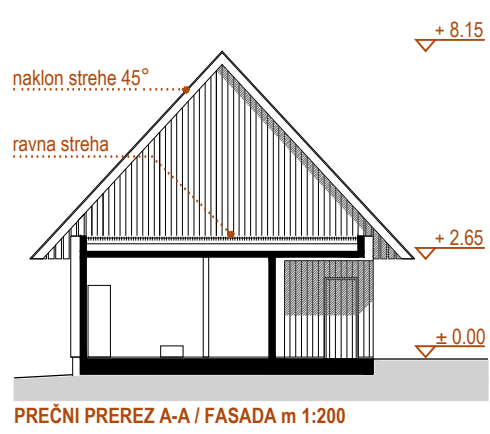


PREČNI PREREZ m 1:200



DVOJČEK | SAVINJSKA REGIJA





STRNJENA GRADNJA | SAVINJSKA REGIJA

