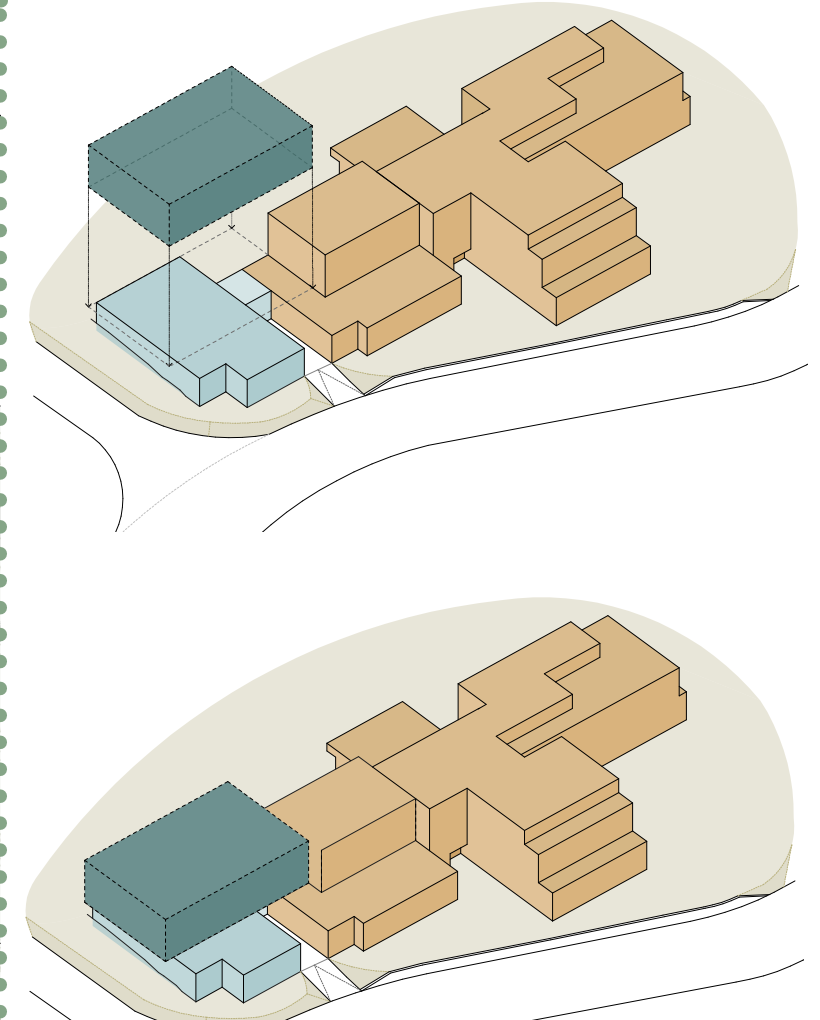
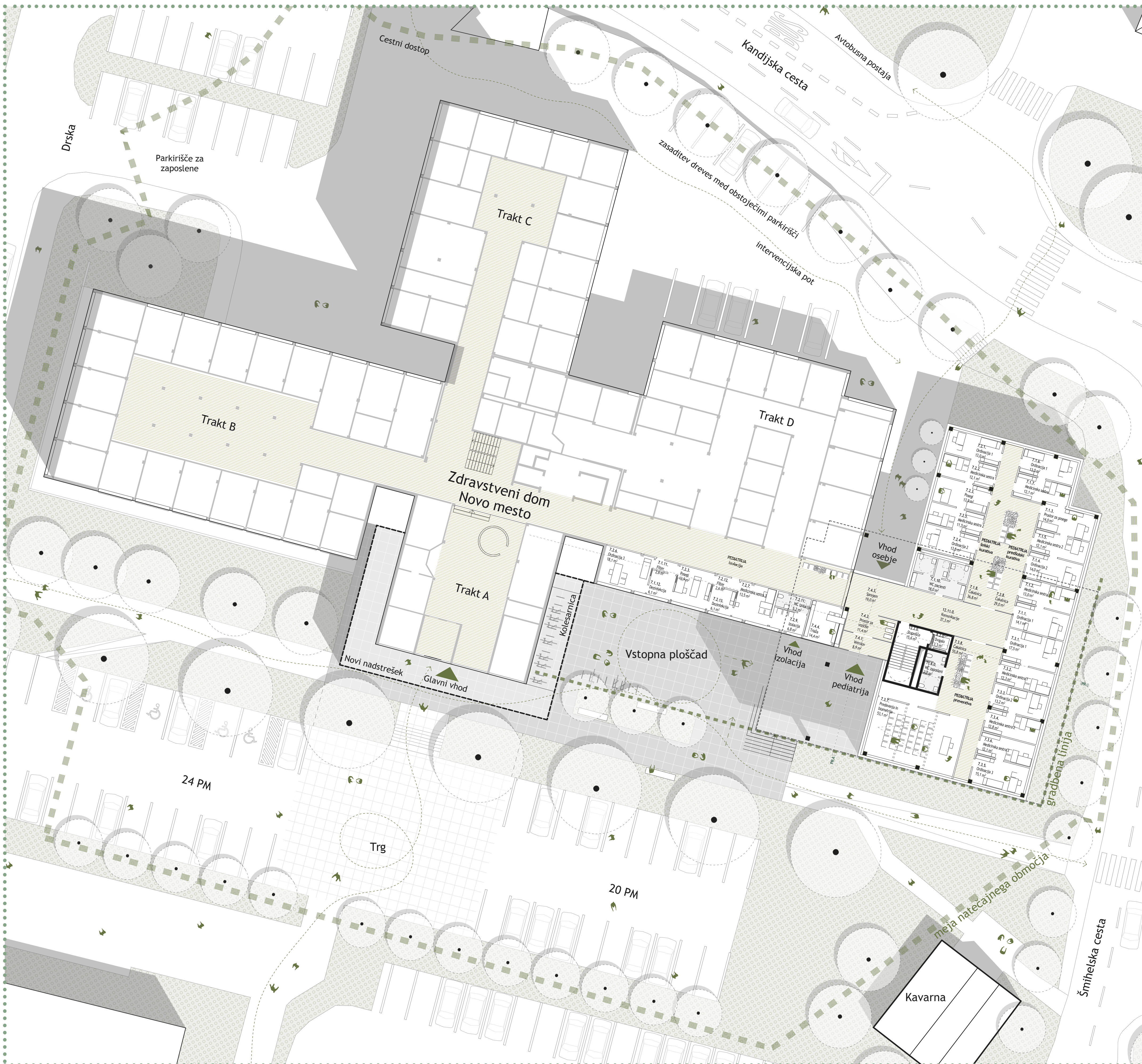
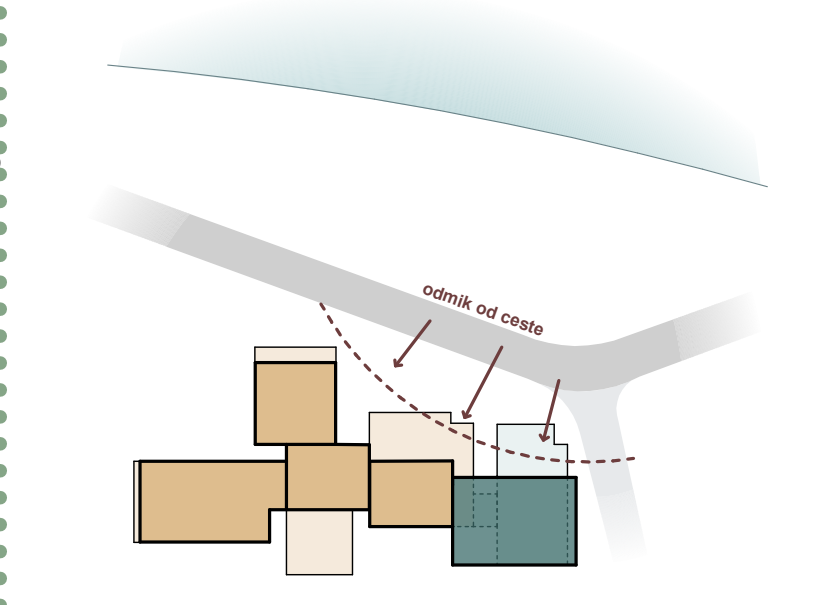


PRIZIDAVA ZDRAVSTVENEGA DOMA NOVO MESTO

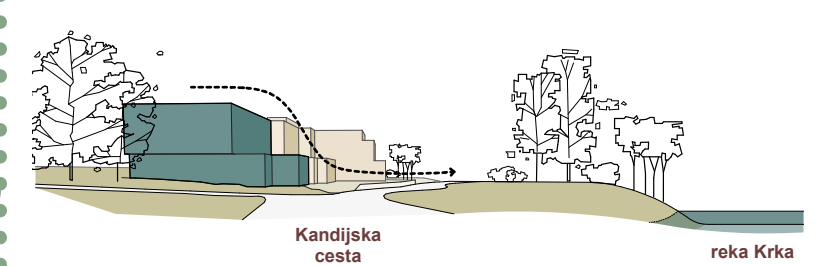
01



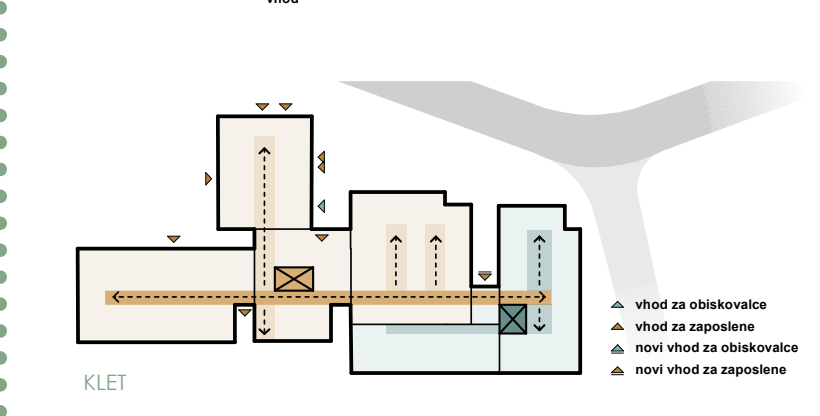
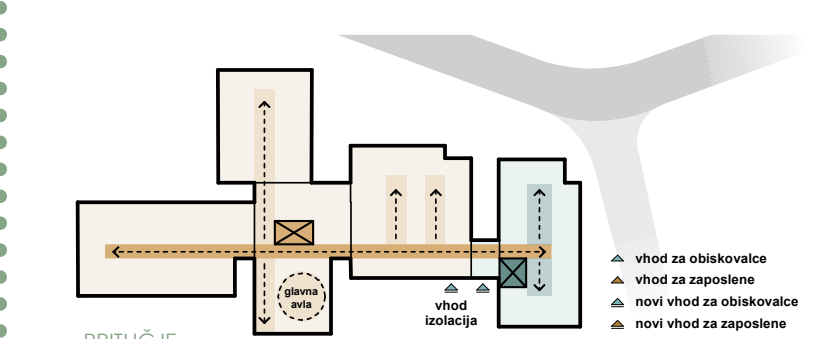
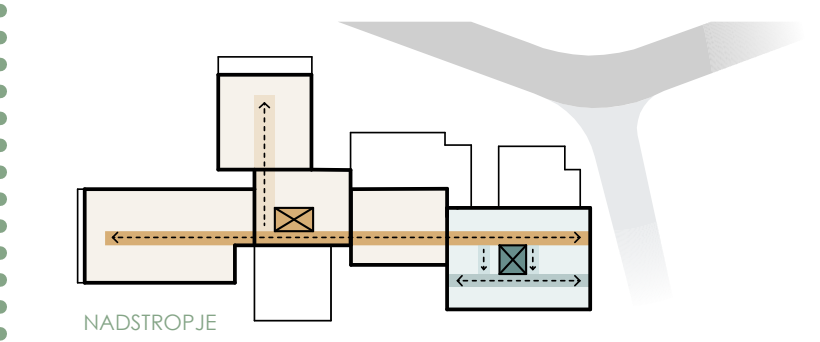
prizidava kot logično nadaljevanje obstoječega objekta, njegovega merila in identitete



nizanje volumnov vzdolž Kandijske ceste



razmestitev volumnov omogoča maksimalen odmik novega trakta od Kandijske ceste in občno stopničasto znižanje stavbnih mas proti prostoru reke Krke



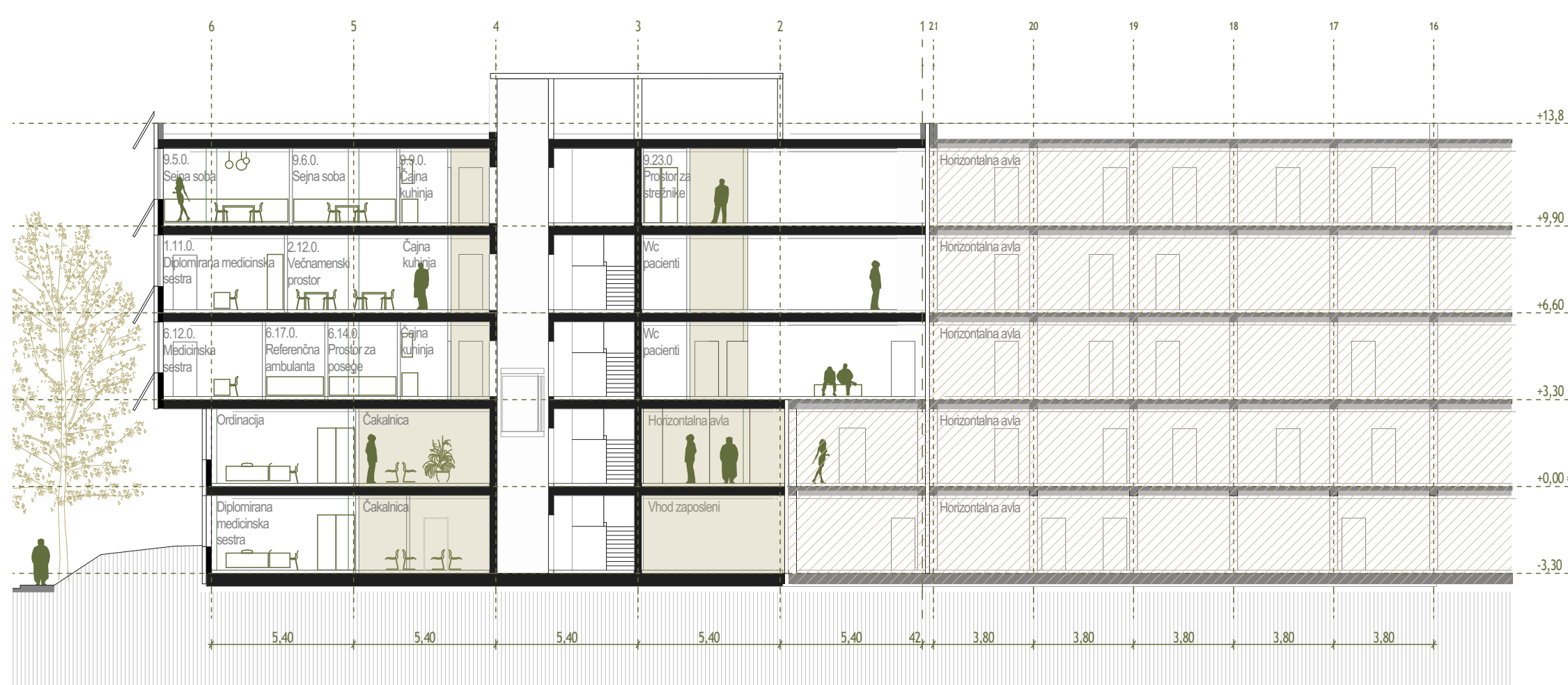
Jasna organizacijska shema komunikacij in prostorov

uređitvena situacija natečajnega in razširjenega območja s prikazom tlorisa pritličja m 1:200

urbanistična in arhitekturna zasnova



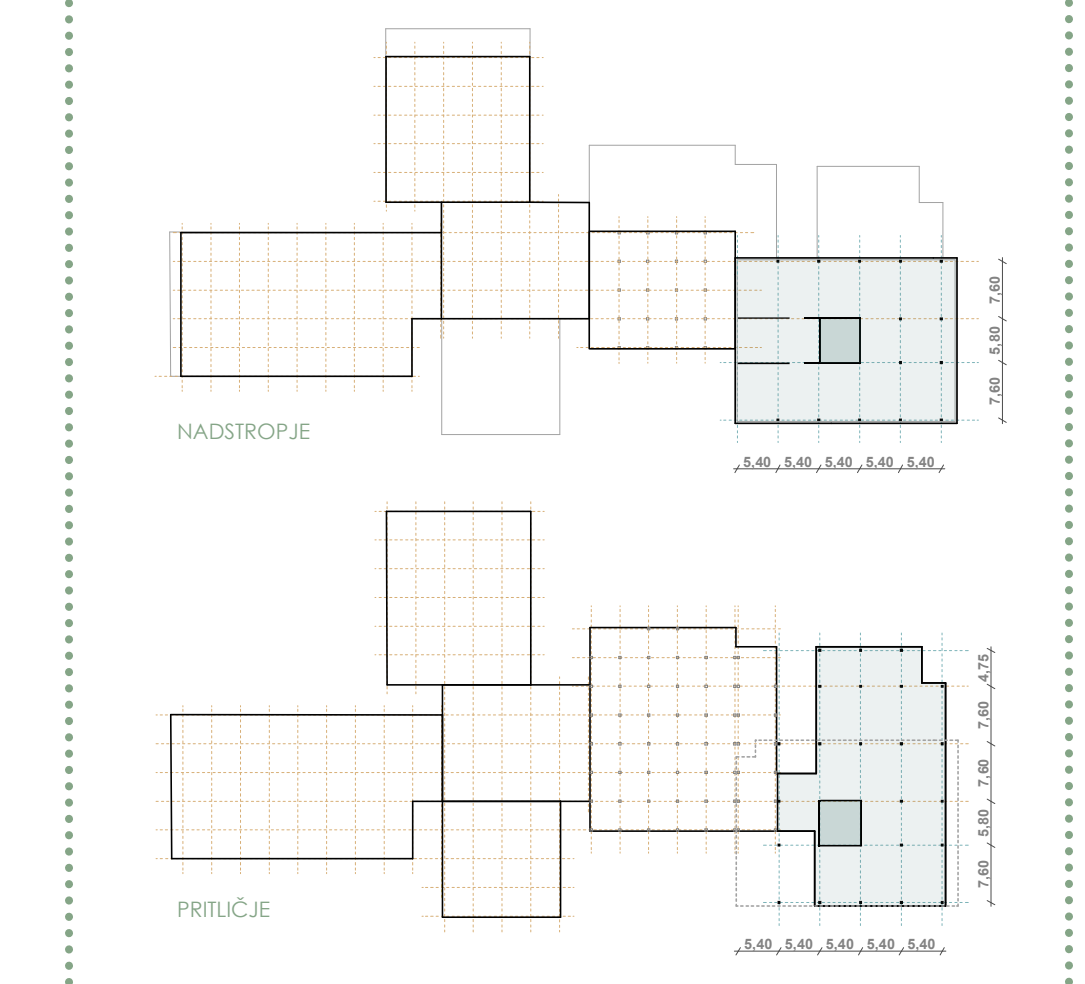
perspektivni pogled z očišča pešca s Kandijske ceste



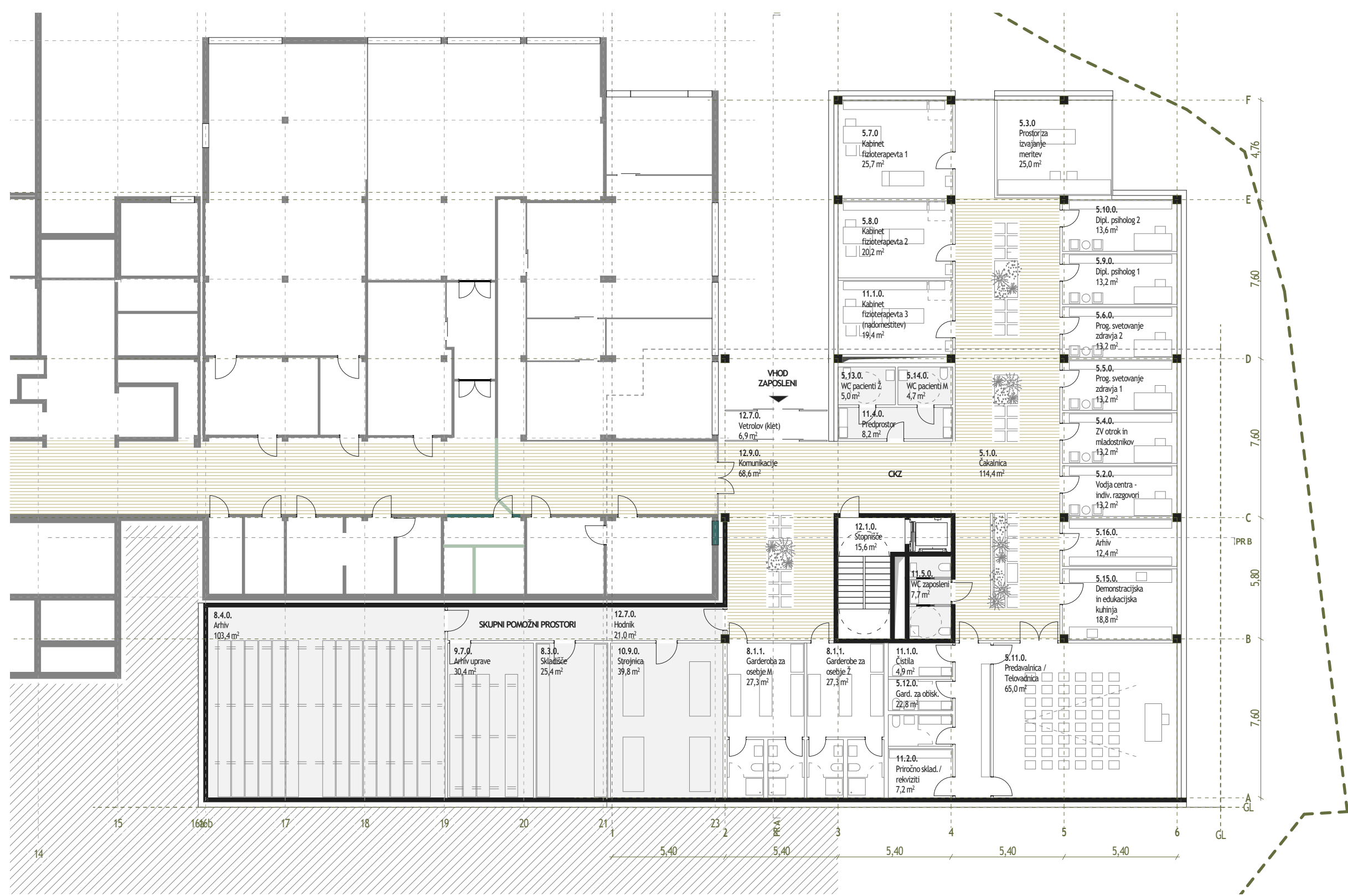
vzdolžni prerez B m 1:200



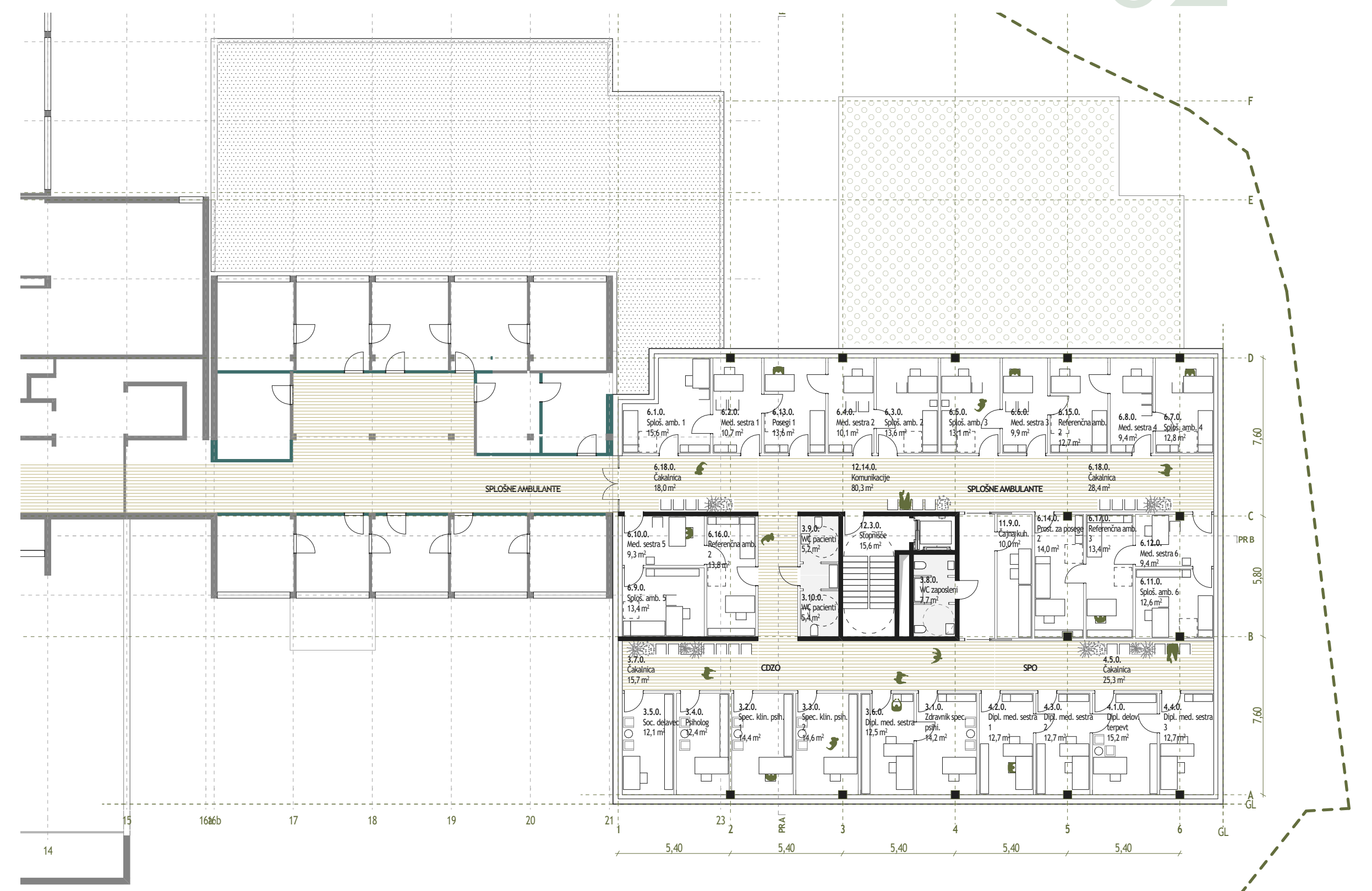
prečni prerez A m 1:200



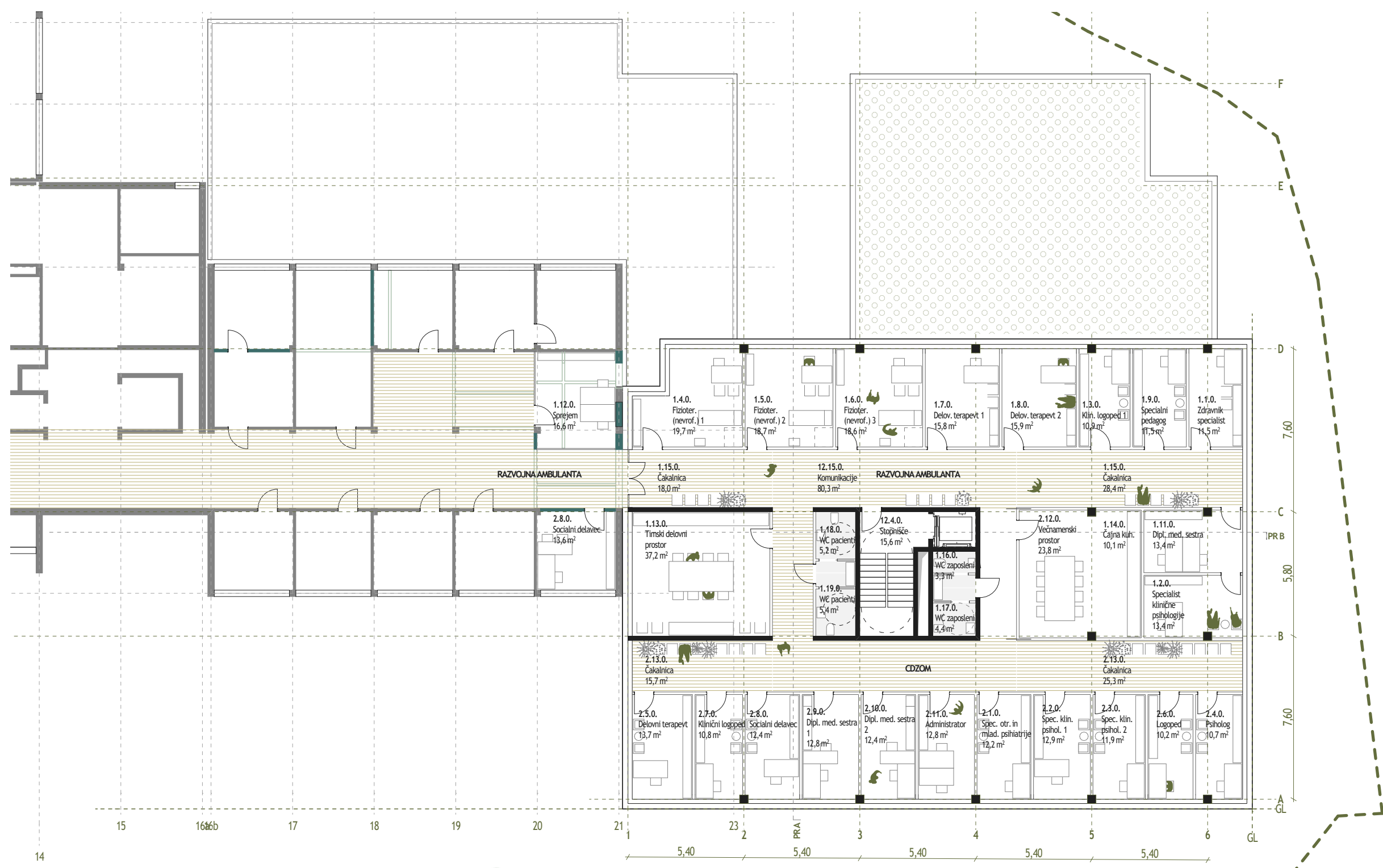
sheme kostrukcije



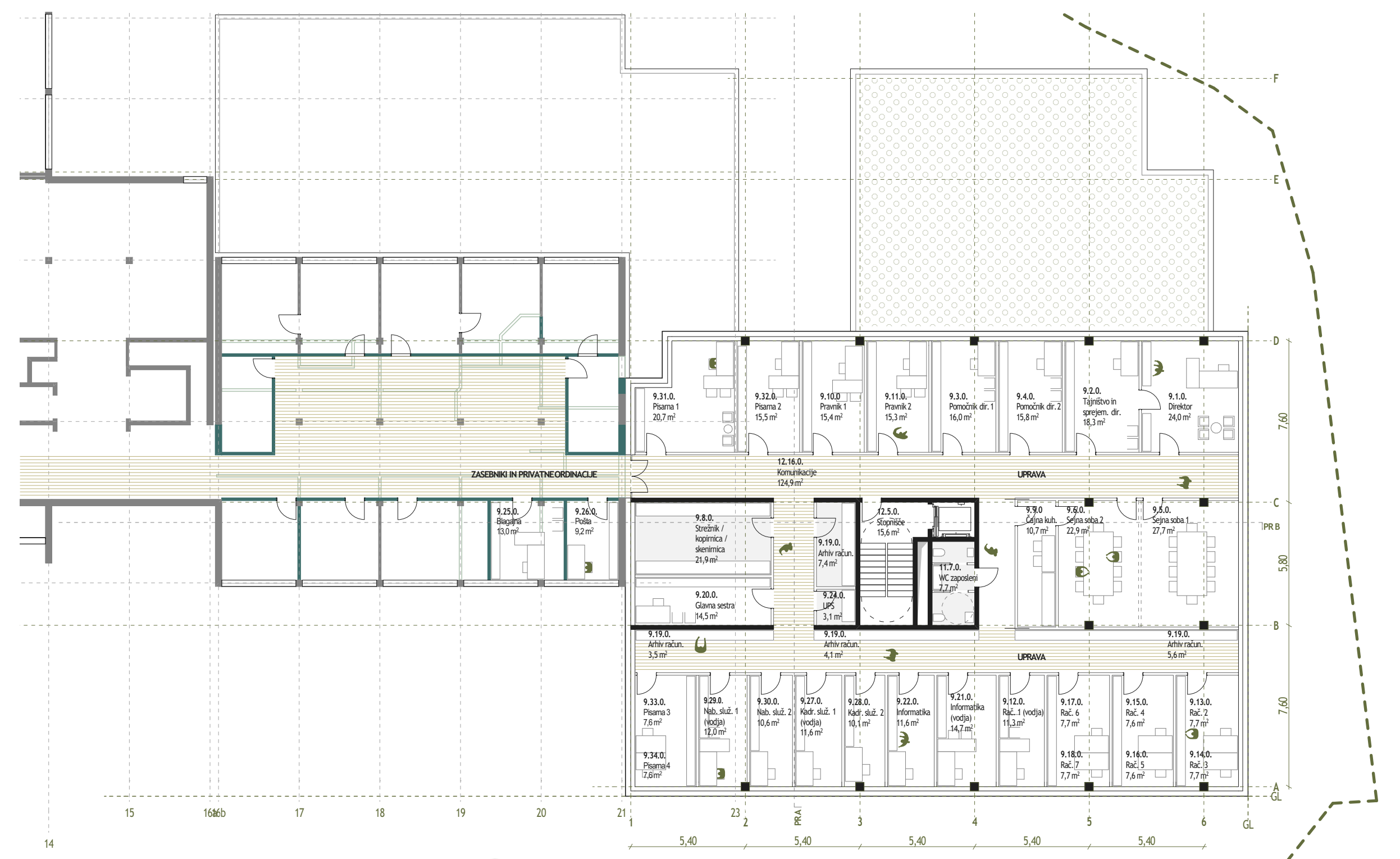
tloris kleti objekta m 1:200



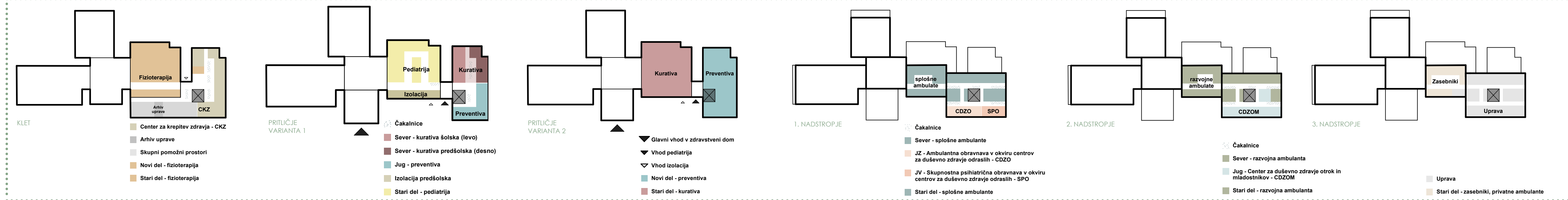
tloris 1. nadstropja m 1:200



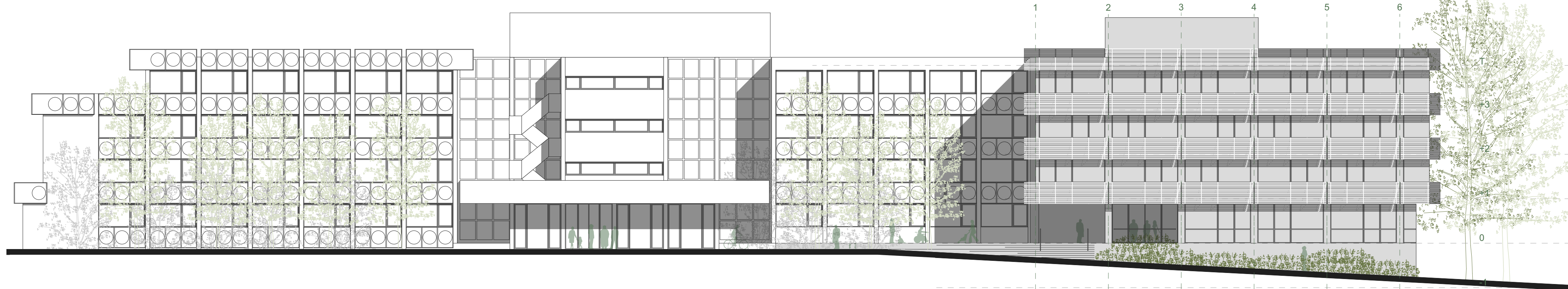
tloris 2. nadstropja m 1:200



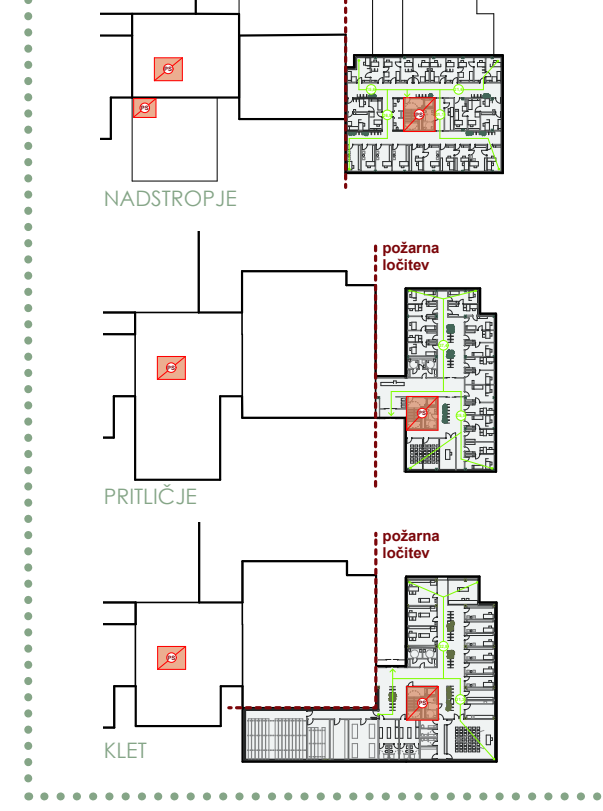
tloris 3. nadstropja m 1:200



sheme programskih sklopov



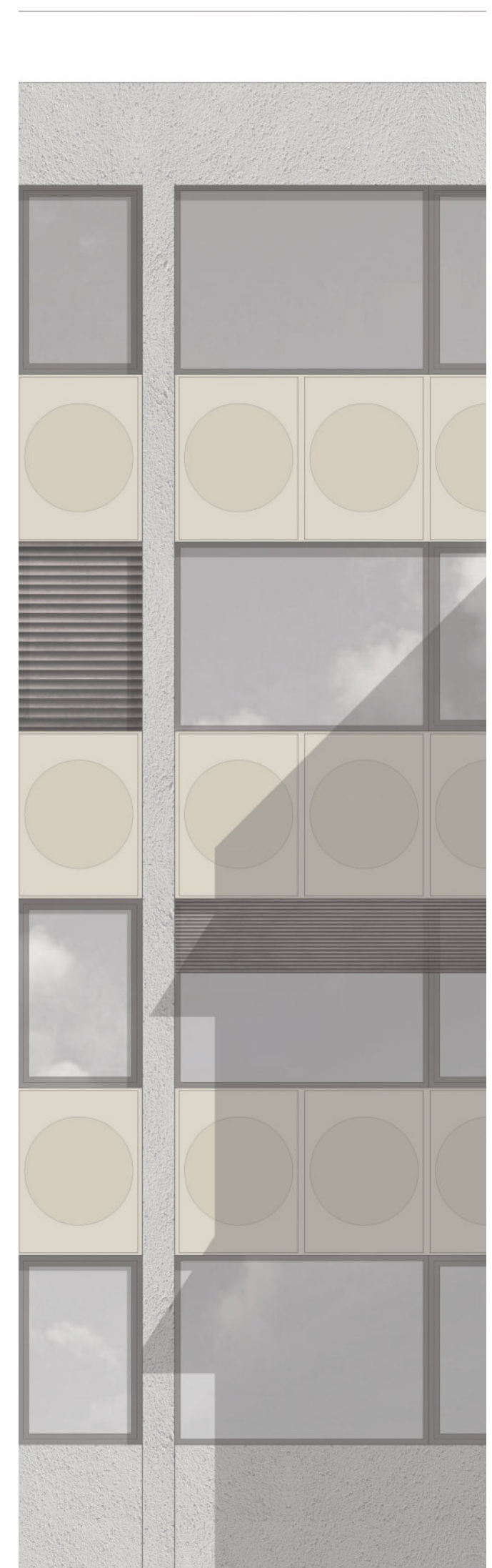
južna fasada m 1:200



sheme požarne varnosti



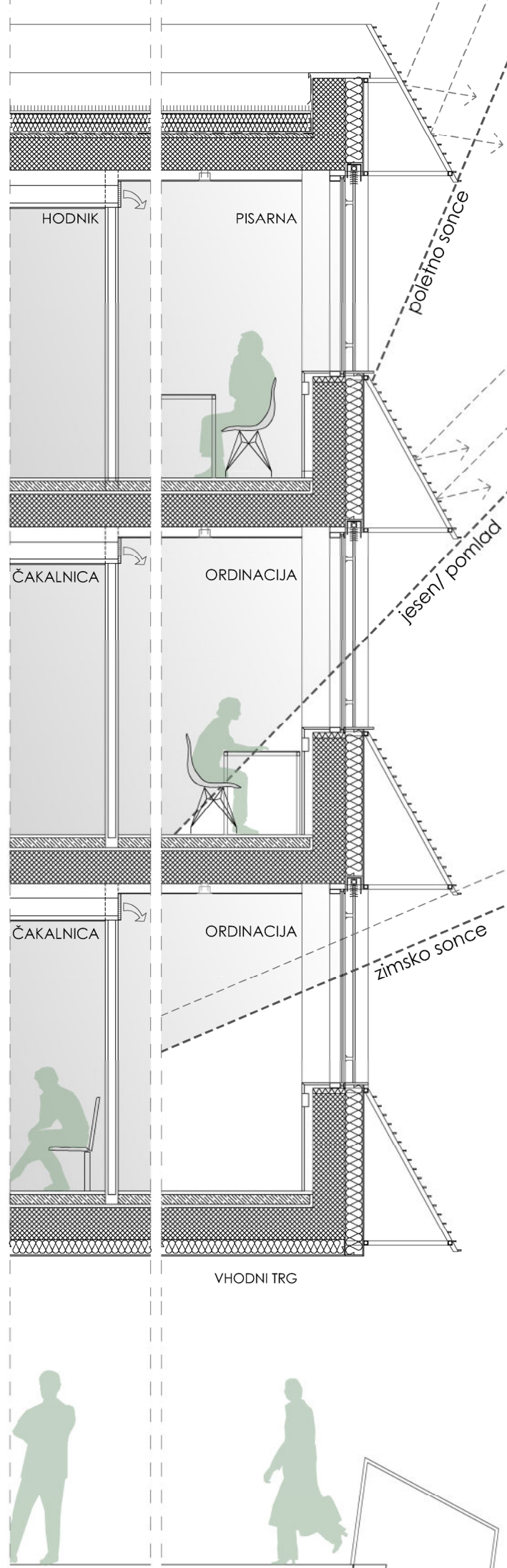
prostorski prikaz ureditve vstopne ploščadi pred novim vhodom



izsek južne fasade obstoječega objekta m 1:50



izsek južne fasade novega objekta m 1:50



Fasadni pas m 1:50