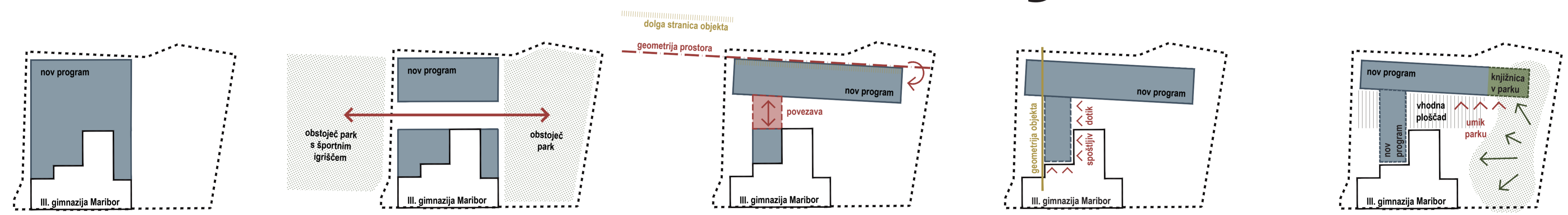


UREDITVENA SITUACIJA NATEČAJNEGA OBMOČJA S PRIKAZOM TLOORISA STREH M 1:500

# PRIZIDAVA III. GIMNAZIJE MARIBOR



RAZVOJ KONCEPTA PRIZIDAVE K OBSTOJEČI STAVBI

NOV STAVBNI VOLUMEN V OBLIKI ČRKE T PRISLONIMO NA ZAHODNO STRANICO SEVERNEGA KRAKA OBSTOJEČE STAVBE IN OB SEVERNI ROB PARCELE. SEVERNA LAMELA JE DALJŠA, SEGA GLOBOKO PROTI STROSSMAYERJEVI ULICI, SLEDI GRADBENI LINIJI STAVB OB GREGORČIČEVI CESTI IN SE S SVOJO DALJŠO, VOLUMETRIČNO MANJ ČLENJENO FASADO SPOGLEDUJE Z VOLUMNOM STADIONA LJUDSKI VRT.

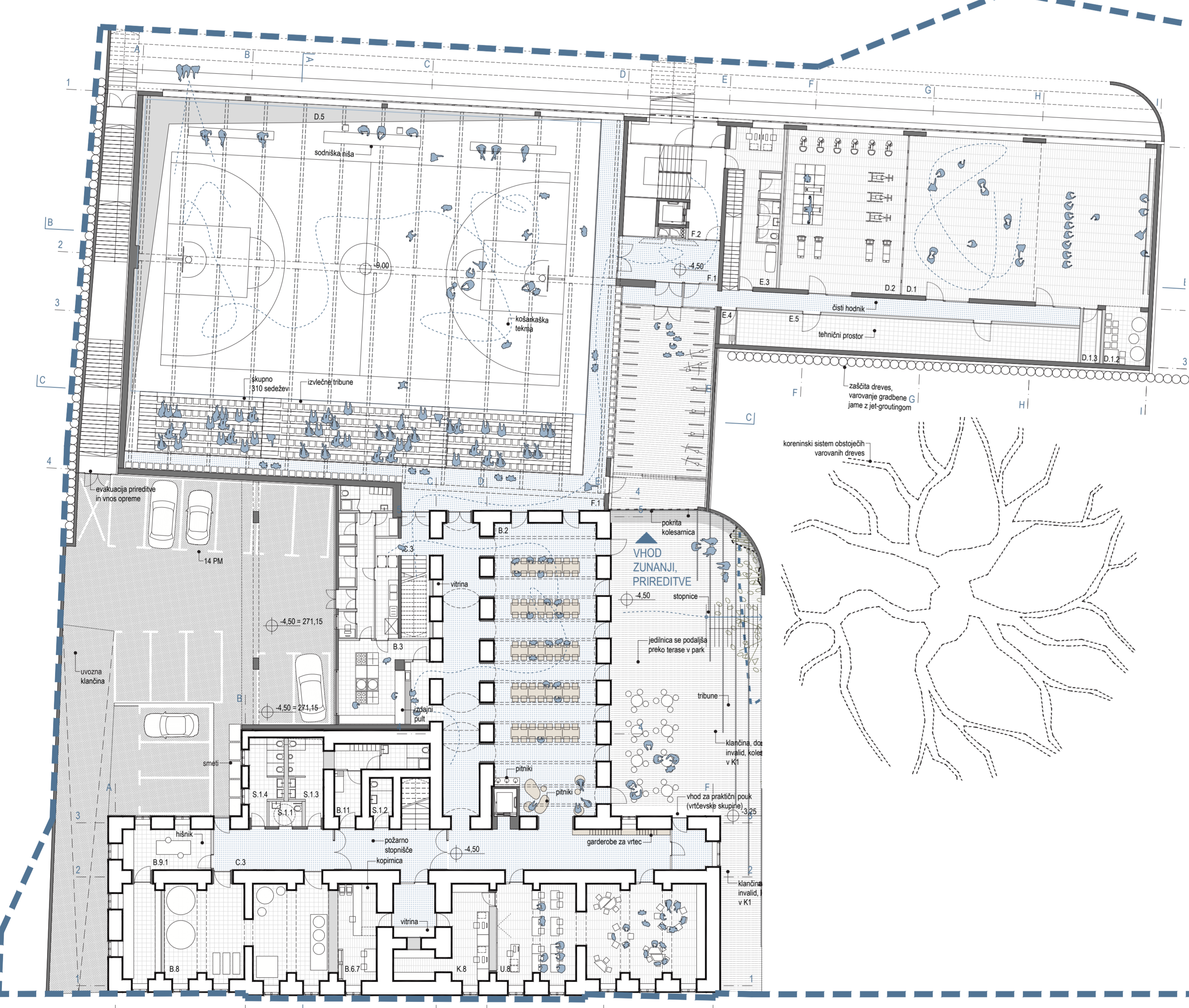
$$\text{ŠOLA} = P_{\text{ROSTOR}} \times [\text{UČENJE} + \text{SOCIALIZACIJA}]$$



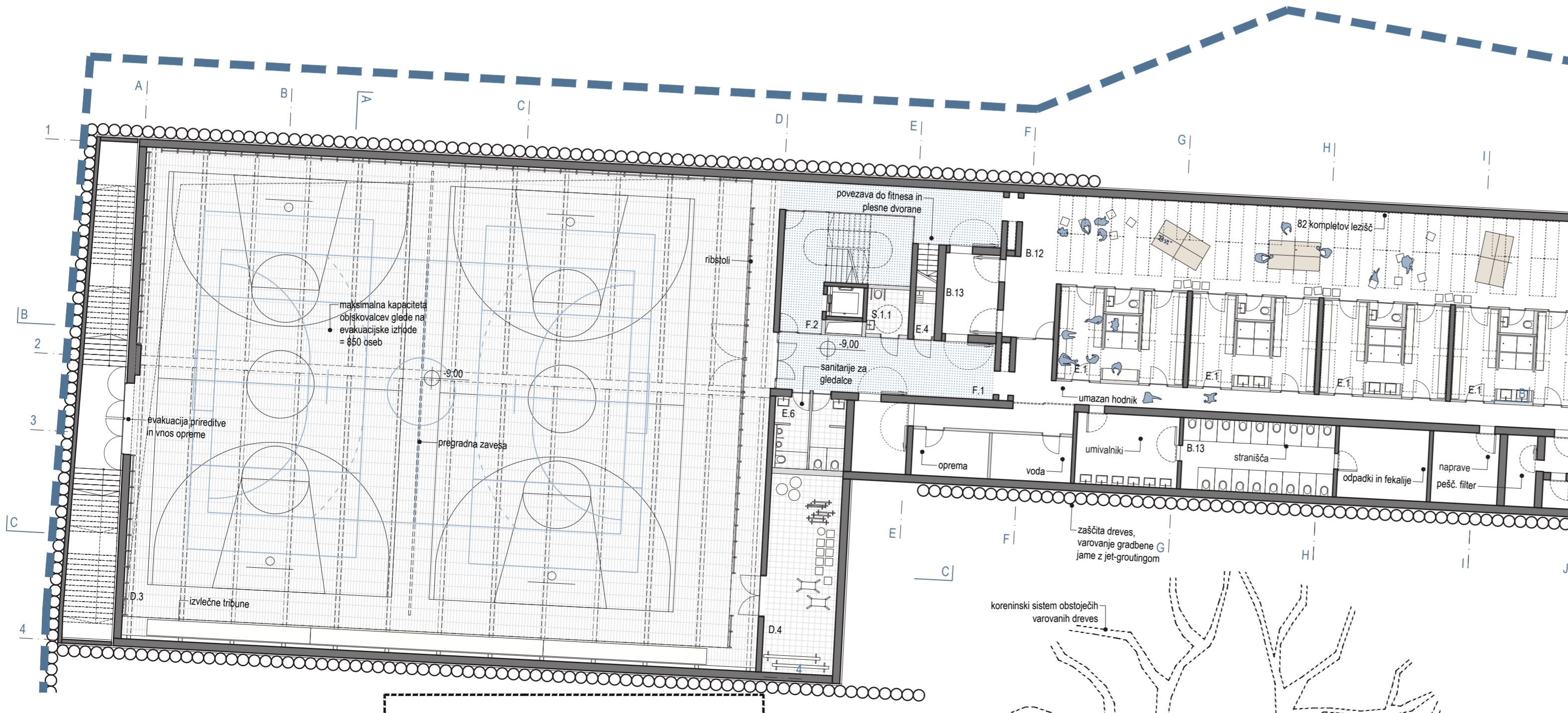
POUK SE ZAČNE IN KONČA V PARKU



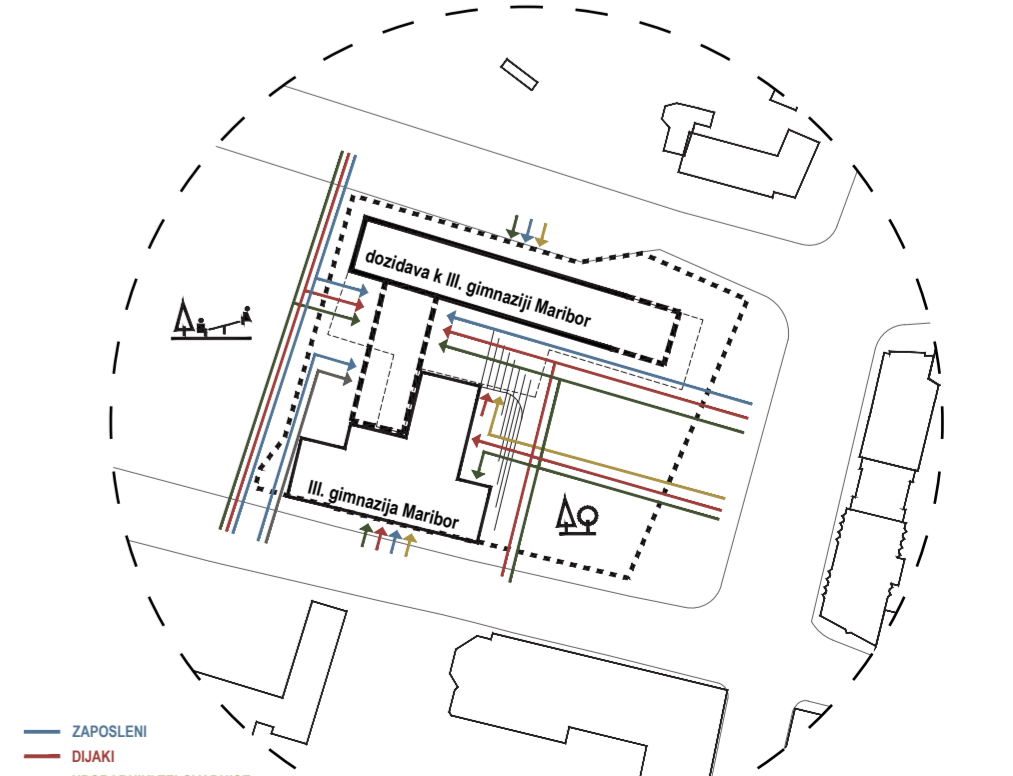
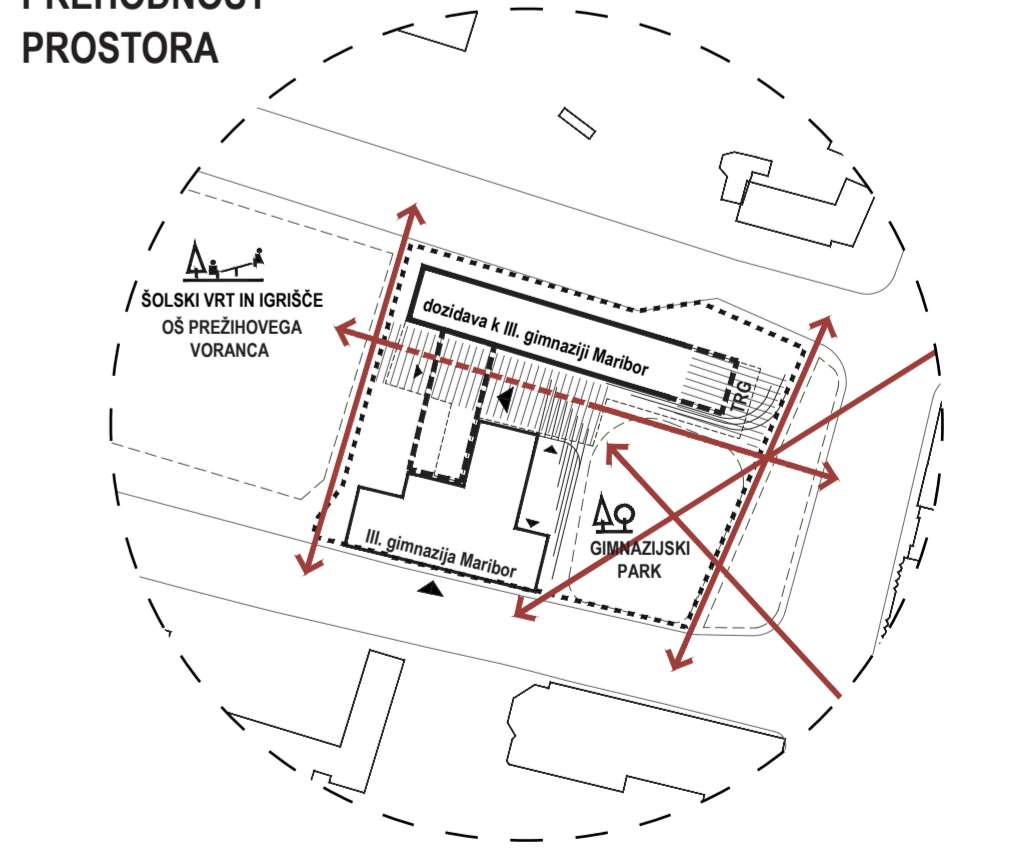
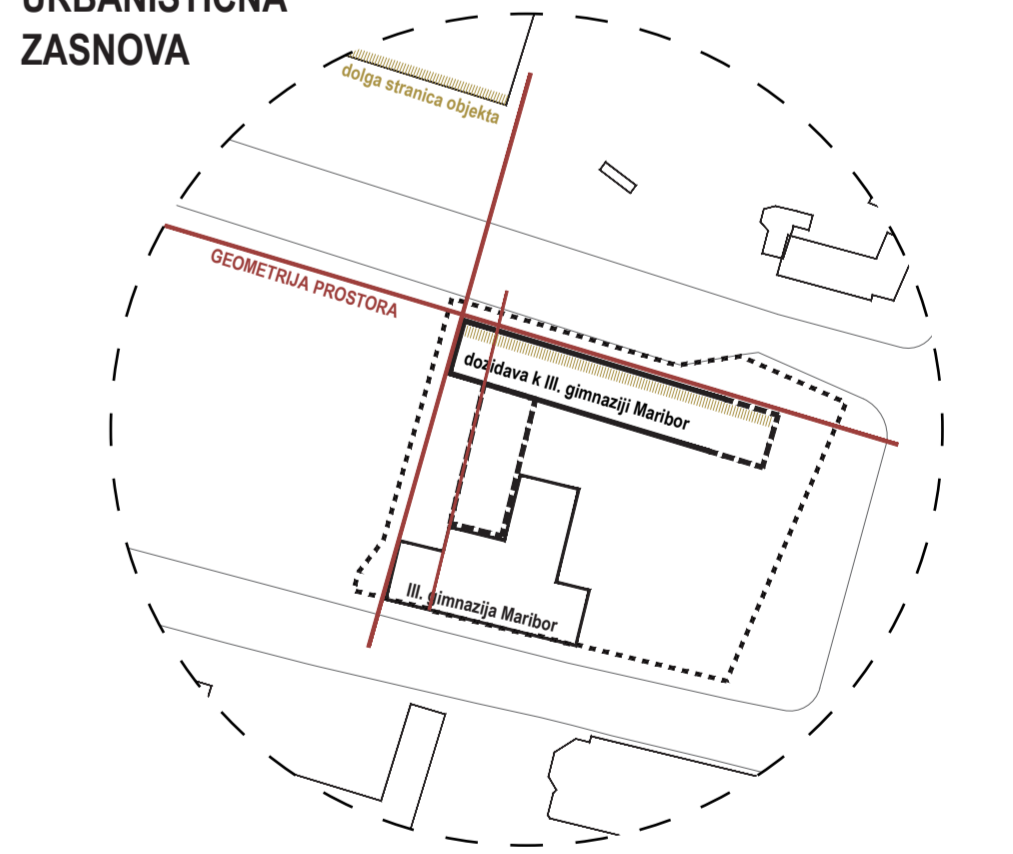
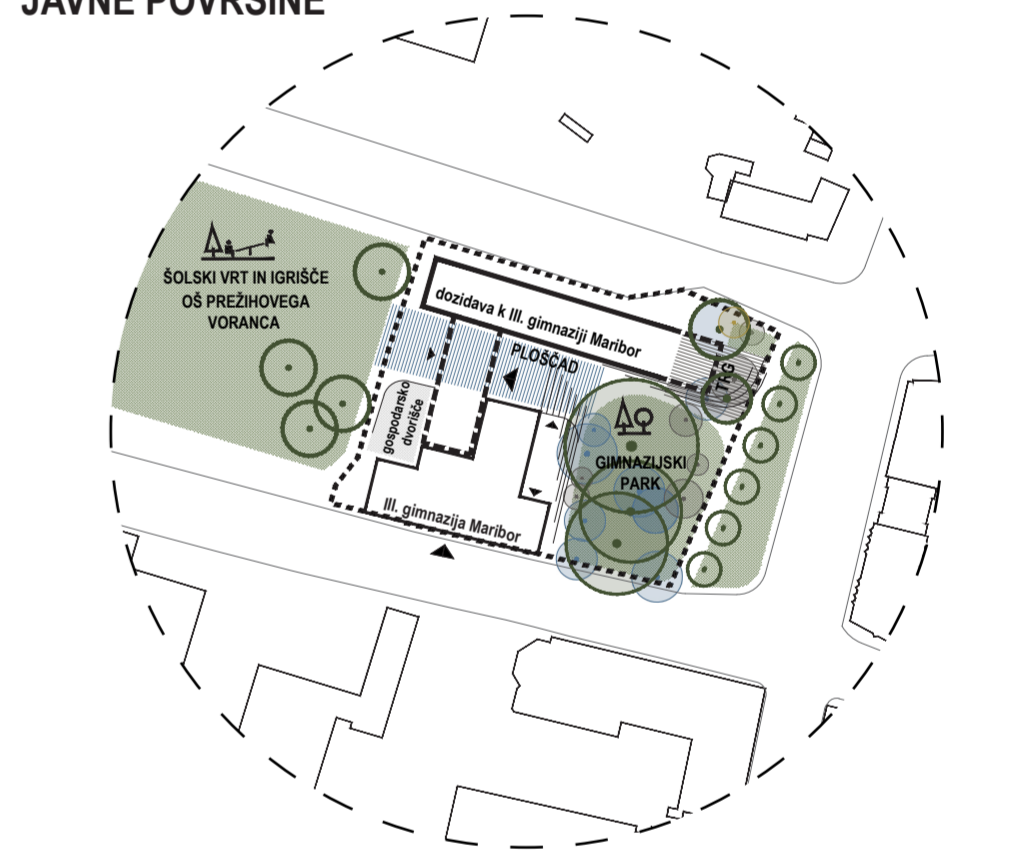
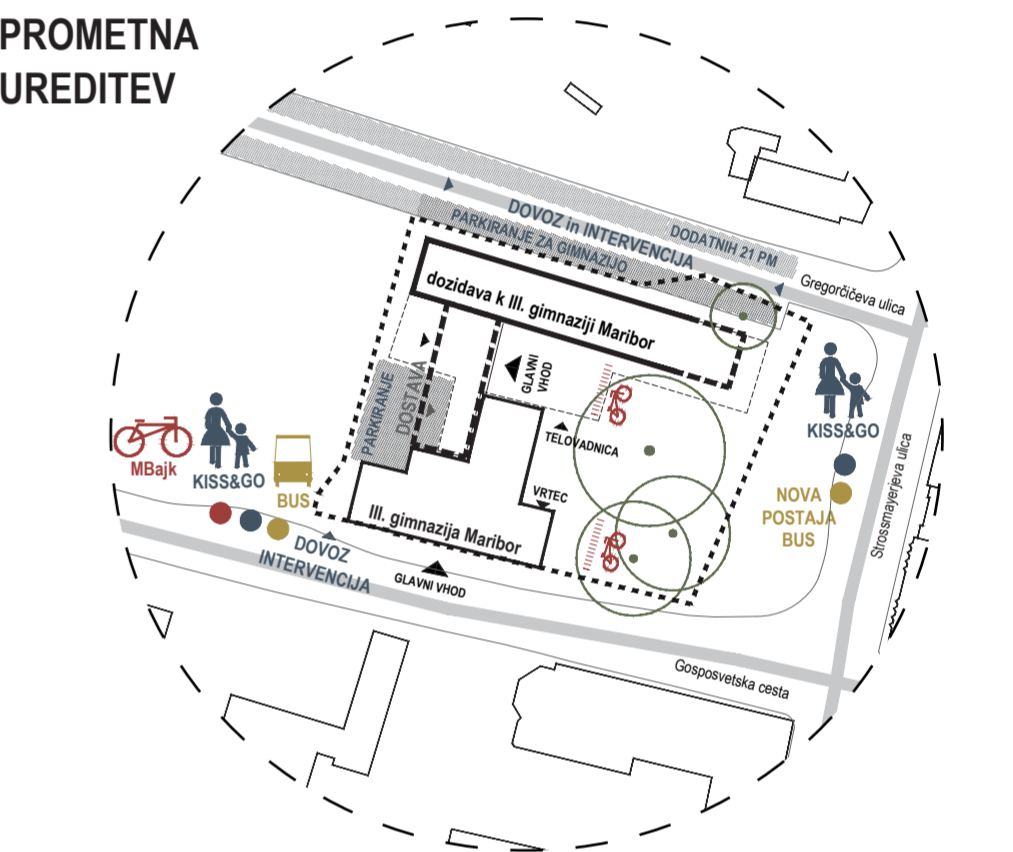
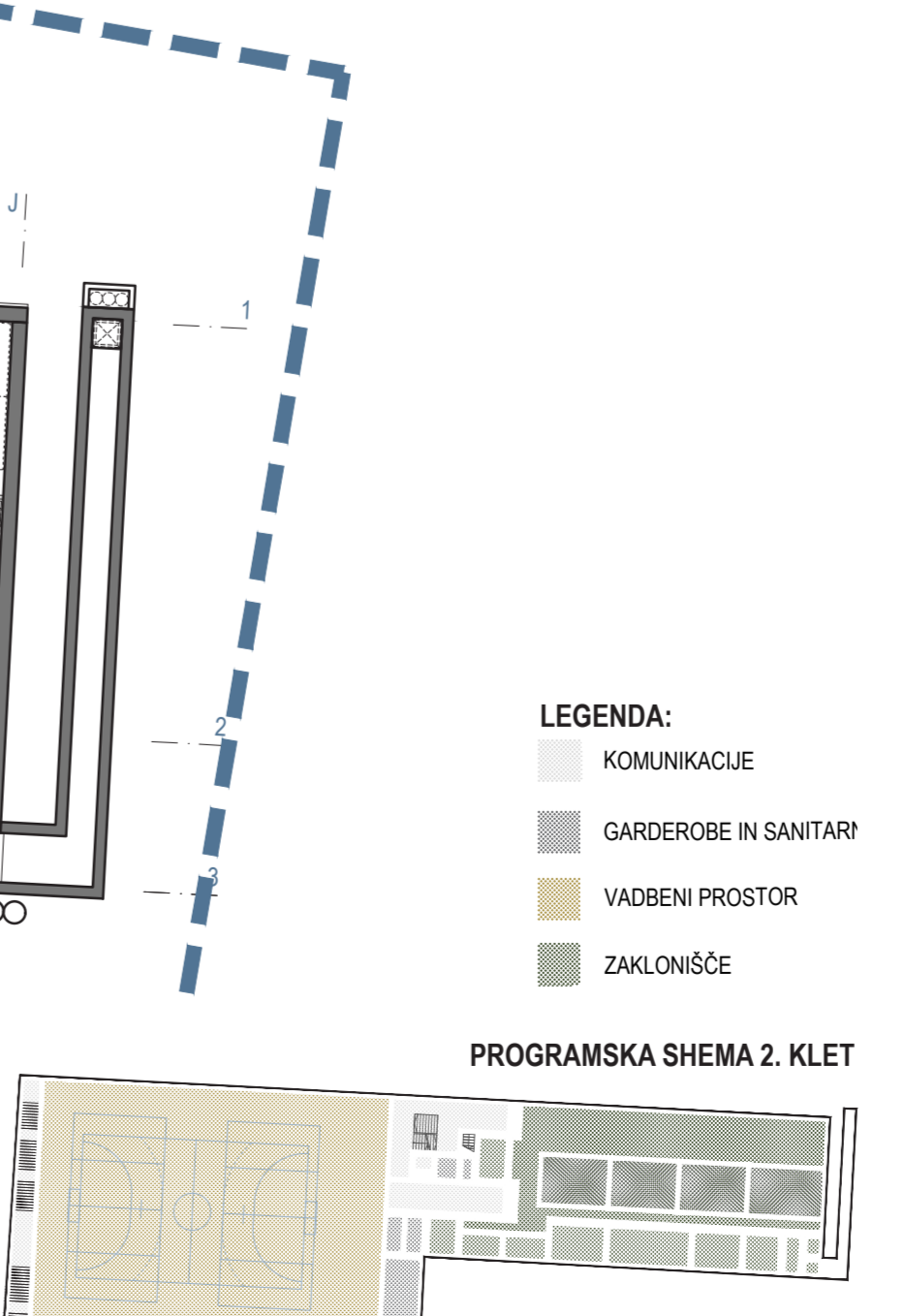
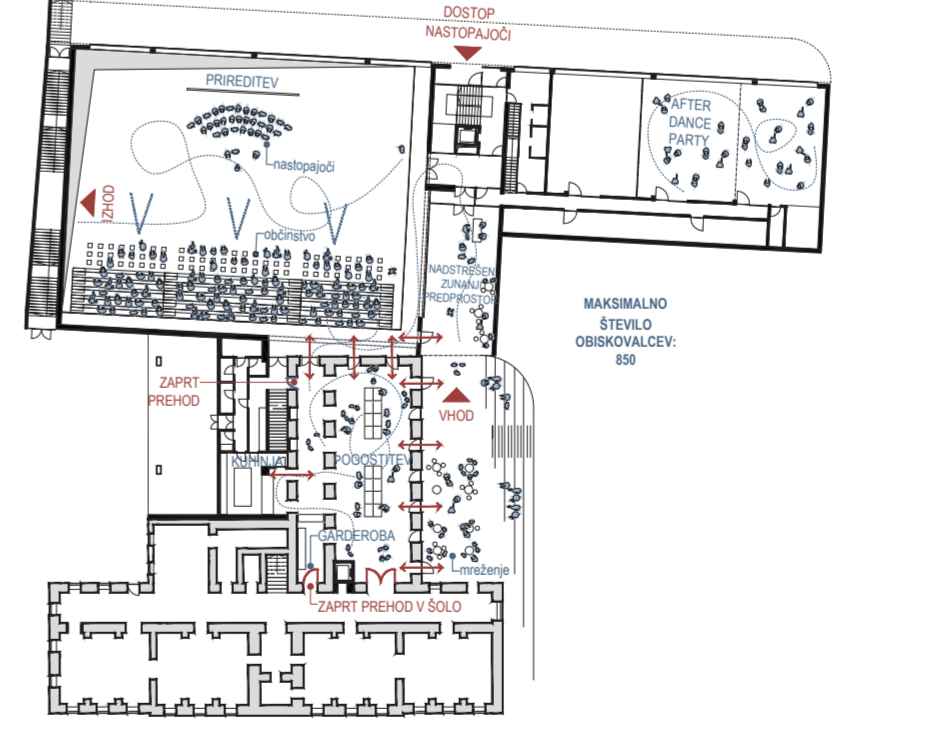
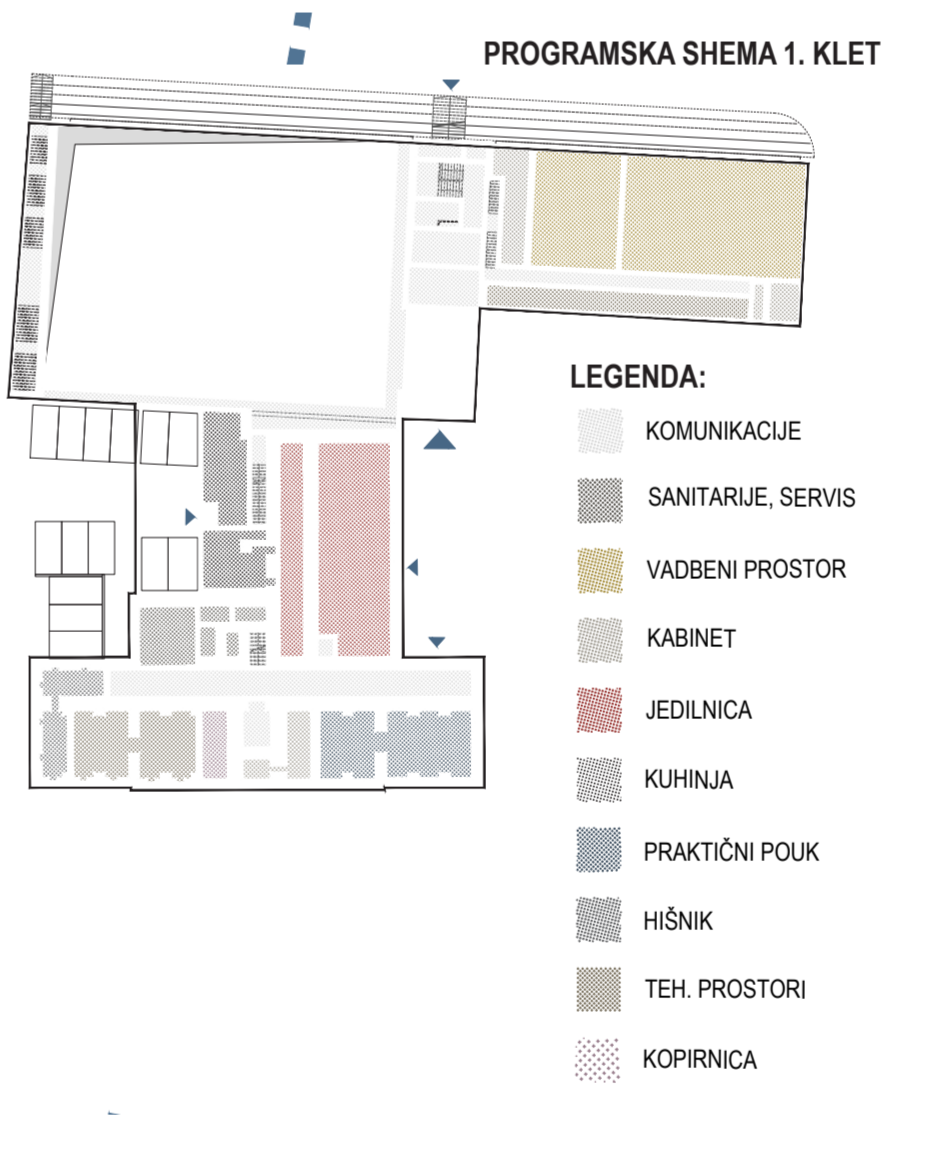
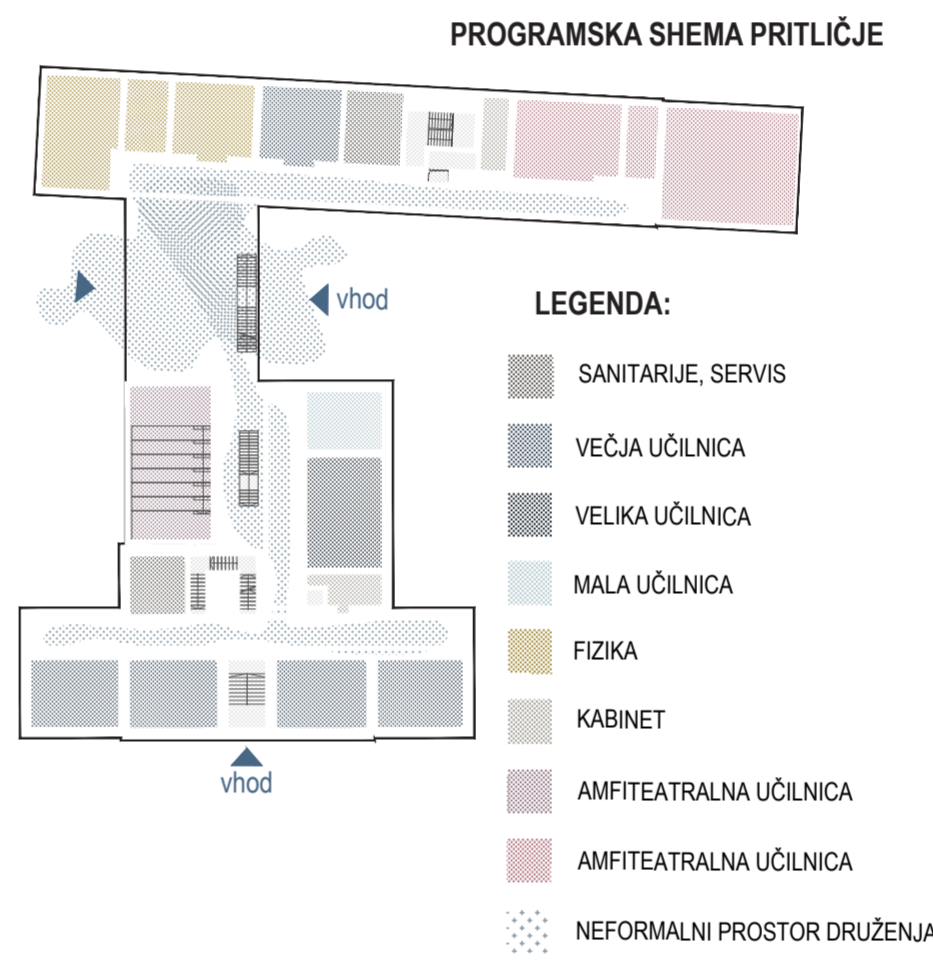
TLORIS PRITLIČJA Z ZUNANJO UREDITVIJO M 1:200

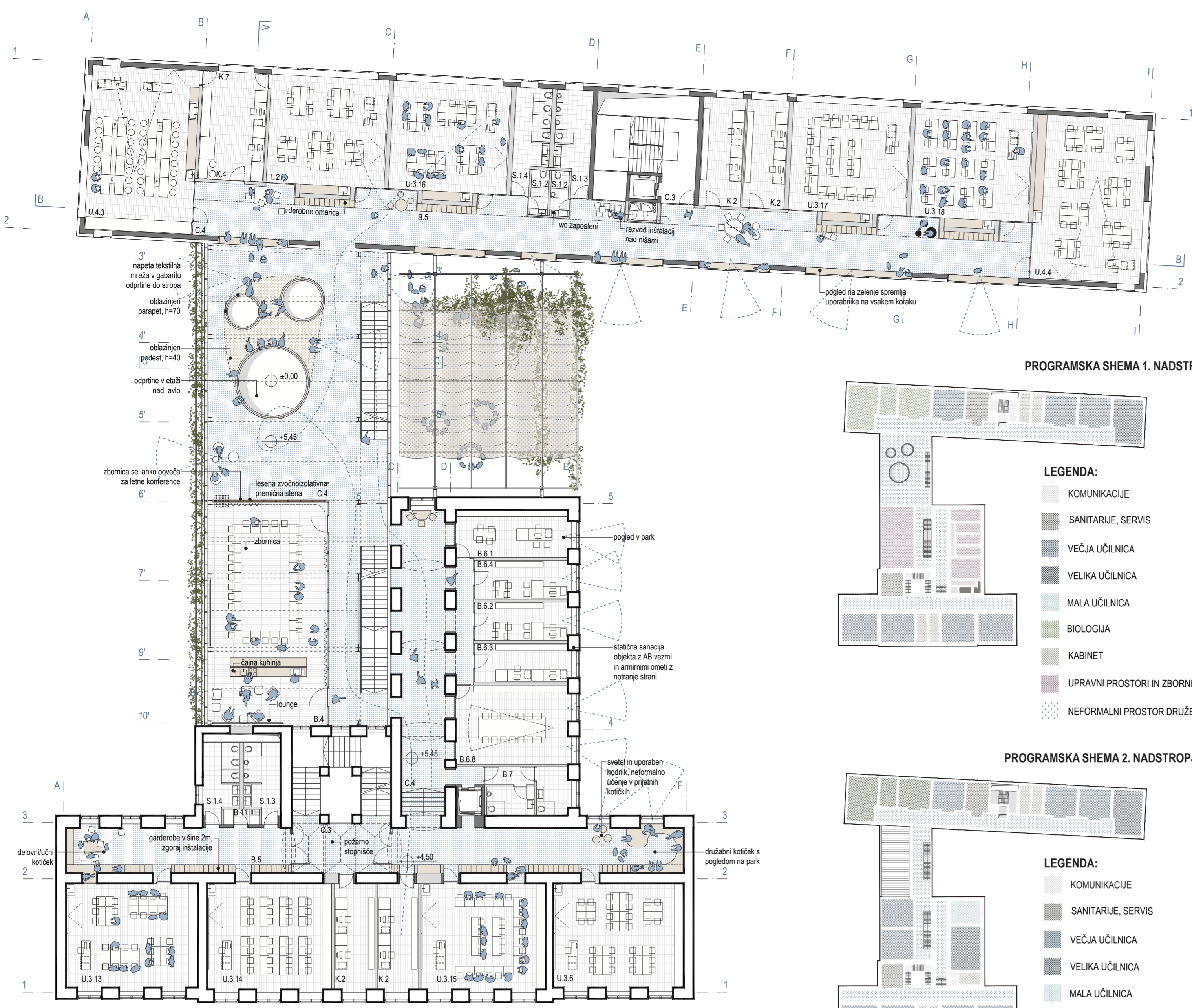


TLORIS 1. KLETI Z ZUNANJO UREDITVIJO M 1:200

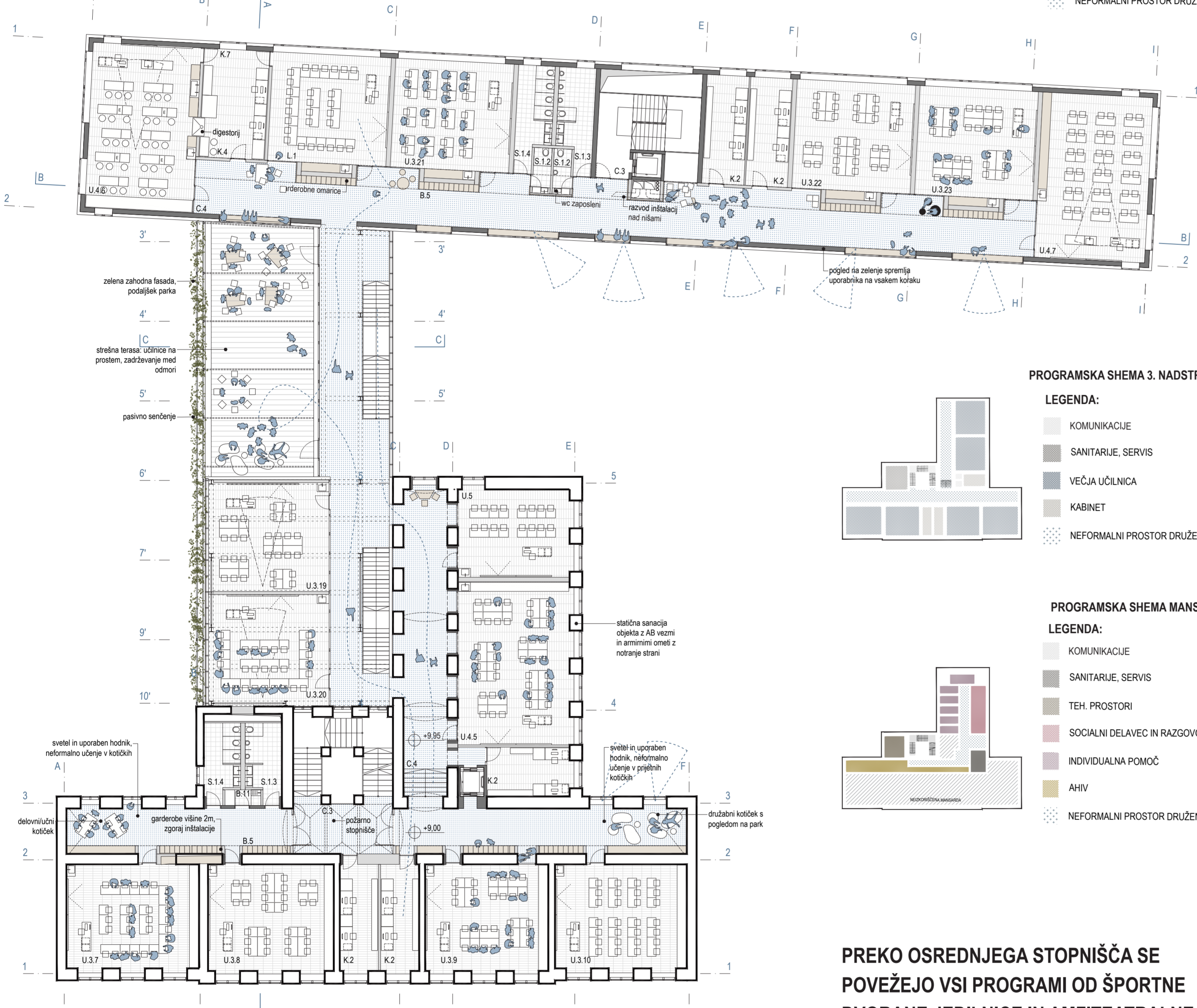


TLORIS 2. KLETI M 1:200





TLORIS 1. NADSTROPJE M 1:200



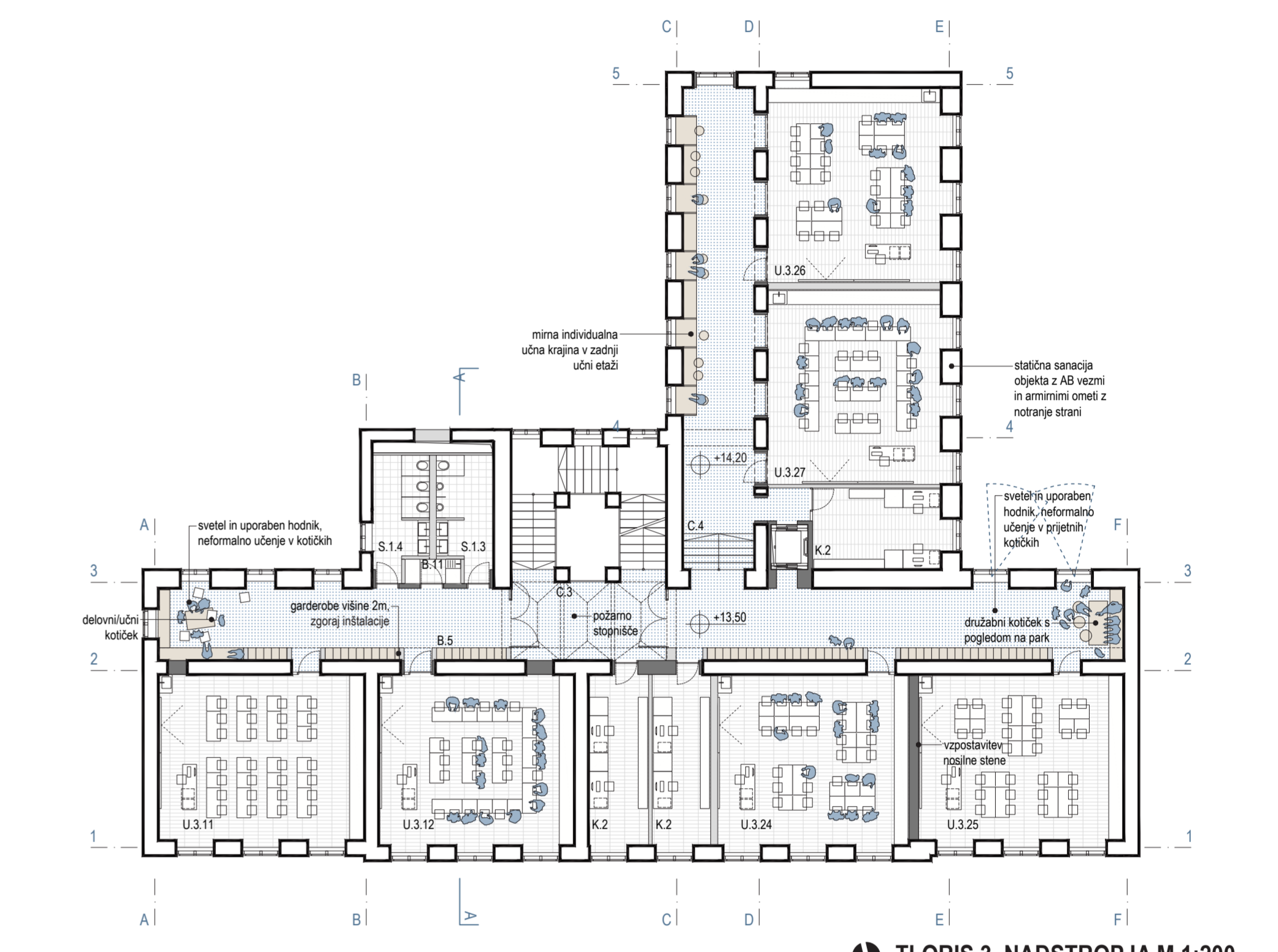
TLORIS 2. NADSTROPJE M 1:200



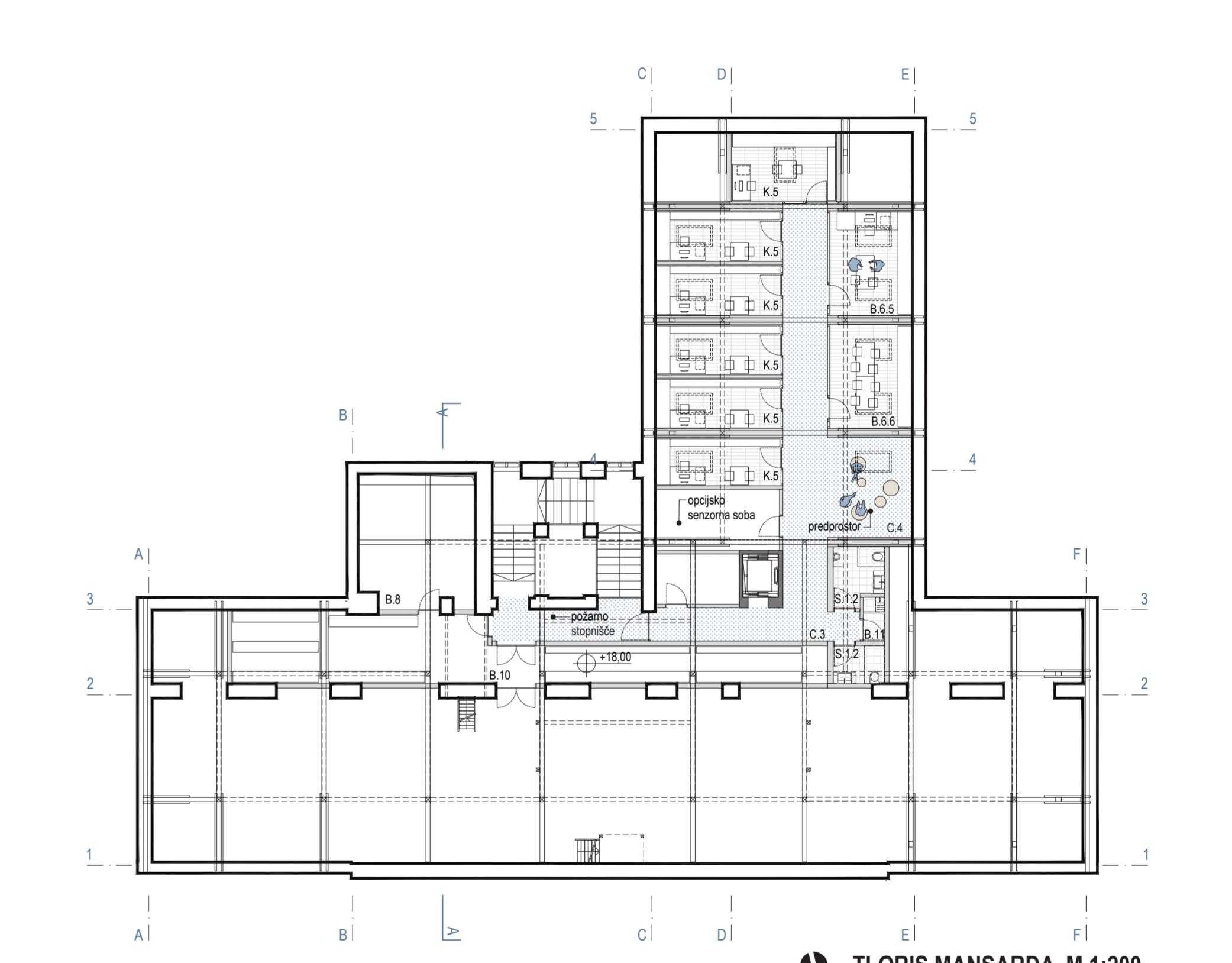
GINNAZIJSKI PARK



KNJIŽNICA V PARKU



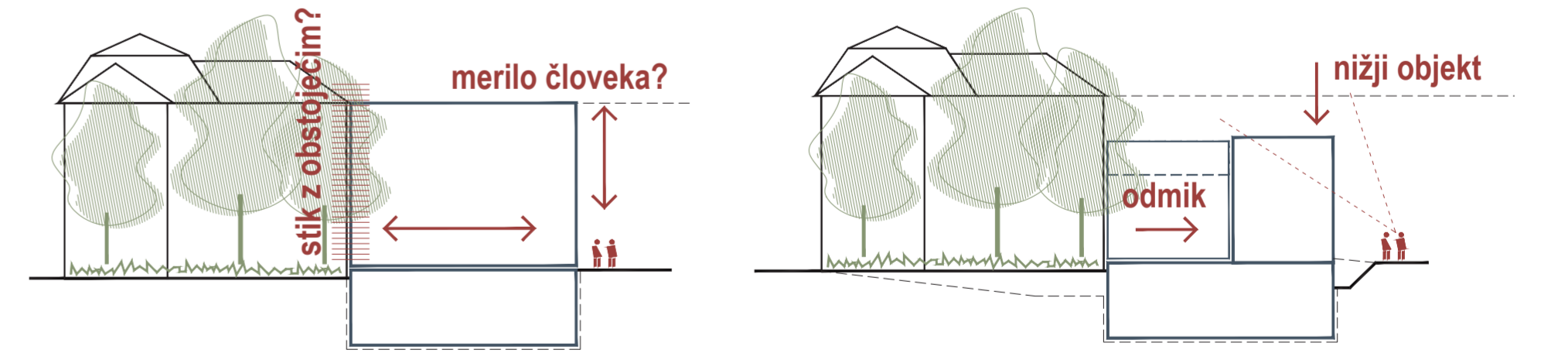
TLORIS 3. NADSTROPJA M 1:200



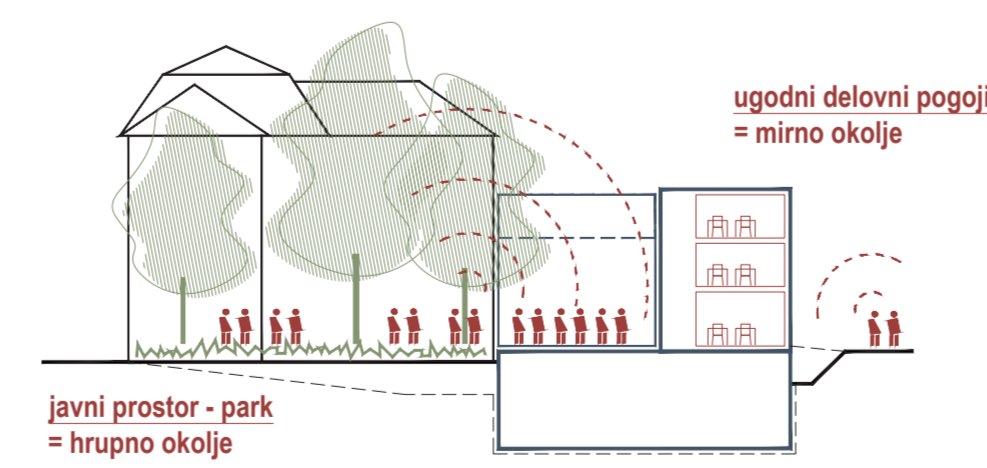
TLORIS MANSARDA M 1:200

PREKO OSREDNJEGA STOPNIŠČA SE POVEŽEJO VSI PROGRAMI OD ŠPORTNE DVORANE JEDILNICE IN AMFITEATRALNE PREDAVALNICE DO UPRAVE IN ZBORNICE.

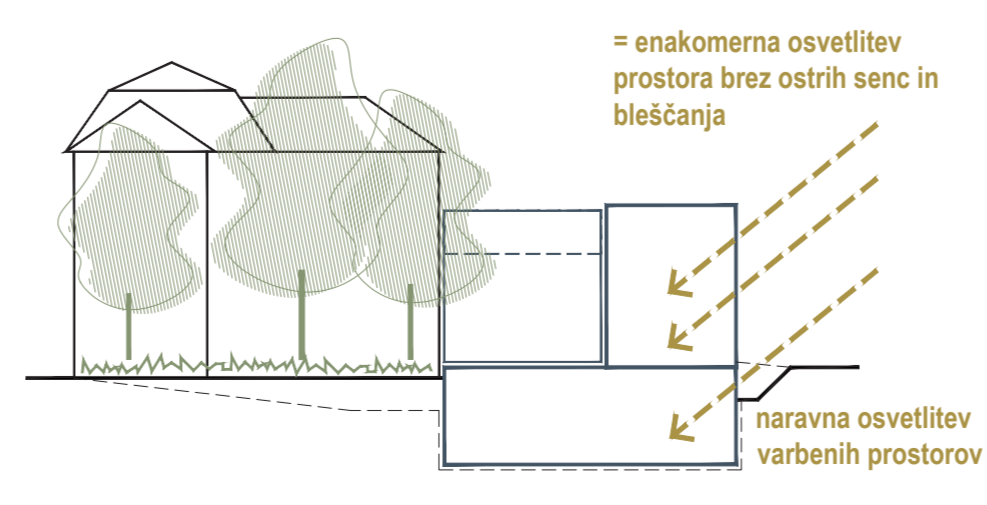
VERTIKALNI RAZVOJ VOLUMNA



ŠOLSKA AVLA = VOZLIŠČE PROGRAMOV IN POTI



ORIENTACIJA UČNIH PROSTOROV



OSVETLJENOST UČNIH PROSTOROV



trno plovnik ob severnem parkletu, pogled iz pisarne dvorane in fitlesa, naravna osvetlitev, valbenih prostorov, kabinet športne vzgoje, nadstropen vhod za zunanjo športnike

